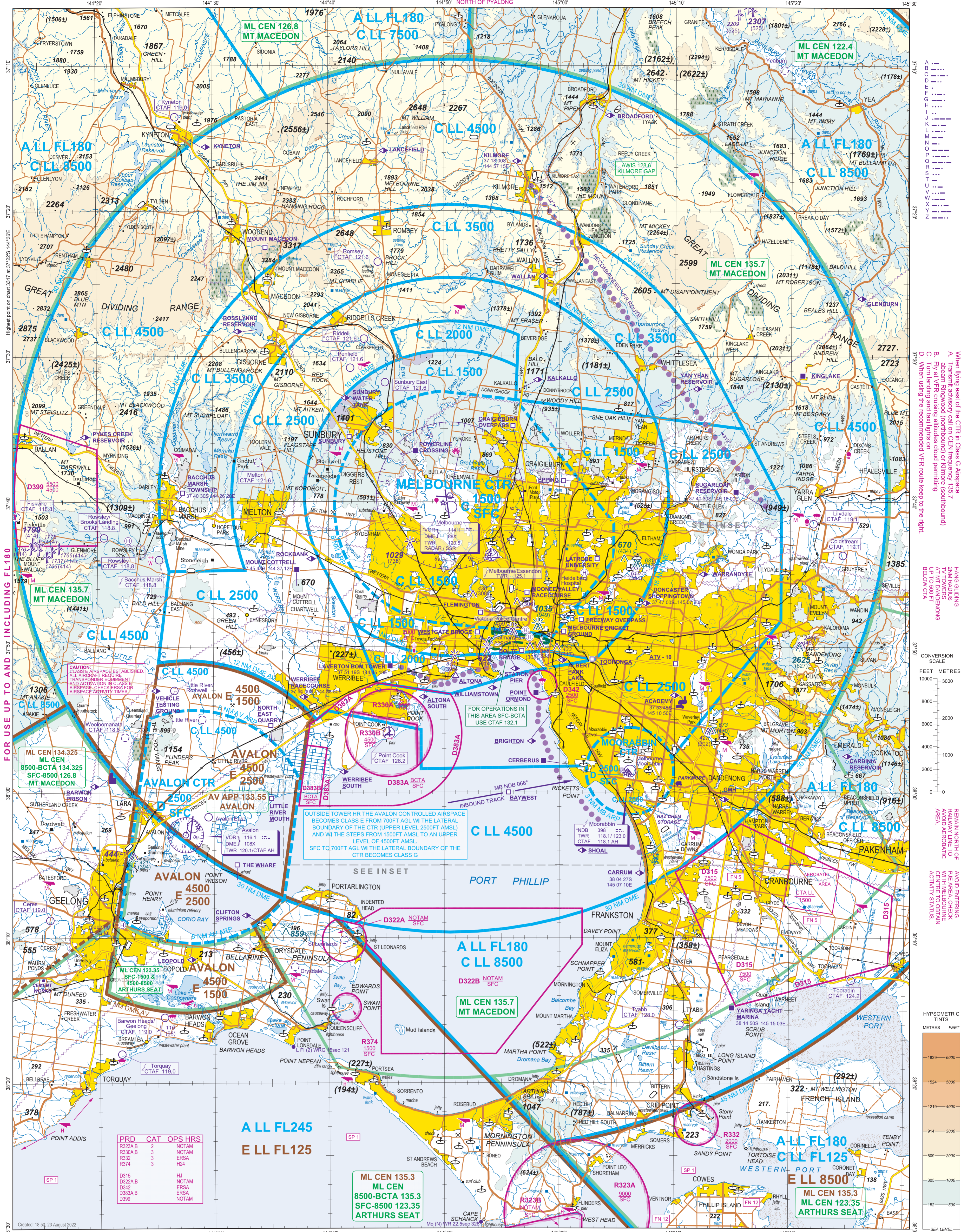


CAUTION: MOST ALAS SHOWN ON THIS CHART HAVE EXTENSIVE FLYING TRAINING OPERATIONS. OVERFLYING PILOTS SHOULD AVOID THE CIRCUIT AREAS ASSOCIATED WITH THESE ADS.

CAUTION: SOUTHERN BOUNDARY OF R350 APPROXIMATELY 5NM NORTH OF PVALONG

FOR USE UP TO AND INCLUDING FL180



When flying east of the CTR in Class G Airspace
 A. Transmit advisory call on CEN frequency (135.7)
 B. Advise Rangoon (northbound) or Kilmore (southbound)
 C. Fly at 1000ft altitudes (avoid permitting)
 D. When using the recommended VFR route keep to the right.

REMAIN NORTH OF
 RAILWAY LINE TO
 P/MEAR CHECK
 AVOID AERODROME
 ACTIVITY STATUS

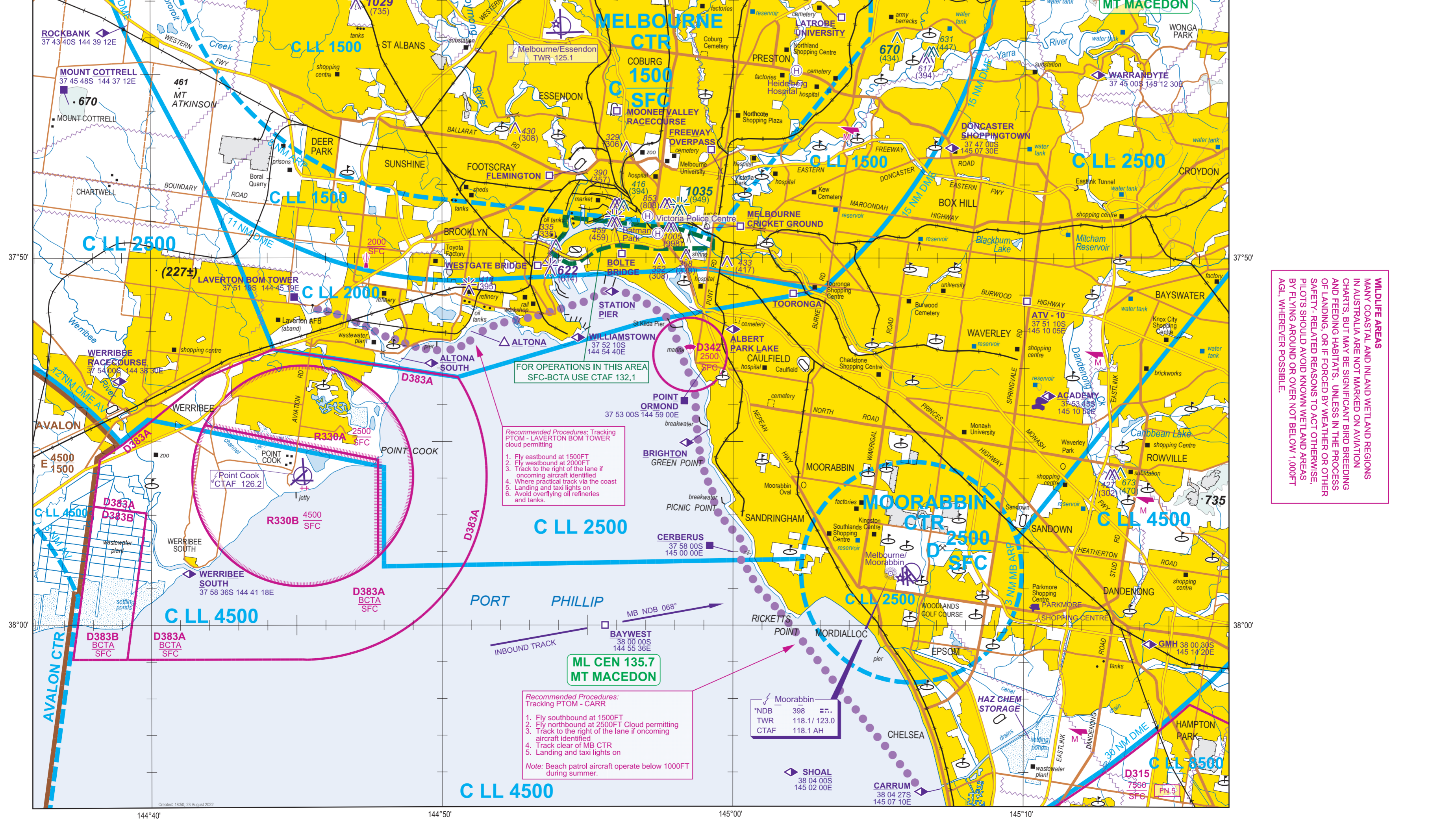
AVOID ENTERING
 P/MEAR CHECK
 WITH MELBOURNE
 ACTIVITY STATUS

CONVERSION SCALE
 FEET METRES
 10000 3000
 8000 2000
 6000 1000
 4000 0
 2000 0
 0 0

HYPOMETRIC TINTS
 METRES FEET
 1020 6000
 1024 6000
 1219 6000
 914 3000
 1009 2000
 305 1000
 102 500
 SEA LEVEL

Created: 18/02, 23 August 2022
 Nautical Miles 5 10 15 20 25 30 35
 Kilometres 5 10 15 20 25 30 35
 UNIVERSAL TRANSVERSE MERCATOR PROJECTION
 TOPOGRAPHIC INFORMATION 2016. COMMONWEALTH OF AUSTRALIA (GEOSCIENCE AUSTRALIA)
MELBOURNE
 EFFECTIVE 01 DECEMBER 2022
 AIRAC (202211301600UTC)

FOR USE UP TO AND INCLUDING FL180



ELEVATIONS AND ALTITUDES ARE SHOWN IN FEET AMSL UNLESS OTHERWISE SPECIFIED
 Horizontal Datum used on this map is the World Geodetic System 1984 (WGS84).
 Vertical Datum is the Australian Height Datum (AHD).
 INSET SCALE 1:150,000
 BEARINGS ARE MAGNETIC
 MAGNETIC VARIATION 111°E (2020)
 LOCAL STANDARD TIME = UTC+10