



The Crossings

Get involved, become a member today!

MEET OUR NEW PRESIDENT

By: Rachel Wheeler

I am thrilled to be your new Cross Lake Association President. I have been a resident of Pine City since March 2021 and I am looking forward to getting to know my new community. Please introduce yourself if you see me out and about.

My husband Doug of 29 years have 3 grown boys and a 2-year-old Grand Daughter. We are recent empty nesters and decided to move to Pine City. We sold our home in Lakeville and were lucky enough to buy a lake home! Doug works for the MN Department of Health and can work from home due to the covid pandemic. I am a Real Estate Broker and owner of Wheeler Group since 2014.

We are already off to a great start with the new Cross Lake/Snake River Board. We have so many great ideas, but we need to hear from you! I encourage you to come to our Membership meetings in 2022 at the Pine City Library. In addition, please feel free to reach out to me with any feedback/suggestions or just to say "hi".

One of our major goals for the year is to have the Cross Lake/Snake River Associations name and mission more recognizable. Focusing on membership and creating a stronger sense of community and networking events on and around the lake. The board is working collaboratively with several organizations on obtaining grants to help improve Cross Lake/Snake River water quality. We are in the process of getting bids and recommendations to help with the widespread weed nuisance. Last Spring, LimnoPro did extensive research and testing on Cross Lake. It will be posted on our website and I highly encourage you to read the entire report. In addition, the water quality committee has a great article in the newsletter. It is very informative and there are encouraging options.

Please go to our website and register to become a member today, WE NEED YOU! If you have any questions, please contact me rachel@crosslakeassociation.org
SEE YOU ON THE LAKE!

MARK YOUR CALENDAR!

Membership Meetings for 2022

May 21 - 9:00-11:00 AM

September 17 - 9:00-11:00 AM

Location: Pine City Public Library

It's important that we hear from you! This is a great time to meet others on the lake, apply for open positions and voice any concerns/comments you may have. In addition, we will have Dan from LimnoPro to discuss water quality and what we are doing with the LimnoPro Data. If you aren't able to attend in-person please consider joining us via the zoom link on our website at: crosslakeassociation.org



MEET THE BOARD



RACHEL WHEELER

President
Rachel@crosslakeassociation.org



DON DEUTSCH

Director / Chair, Fisheries
Donaldwdeutsch@gmail.com



SHANIE BERRY

Vice President / Chair, Membership
Shanie@crosslakeassociation.org



JOE PAGET

Director / Chair, Pine County
Fair Booth



JEREMY BERG

Treasurer



MARGO ROTHENBACHER

Director / Chair, Events



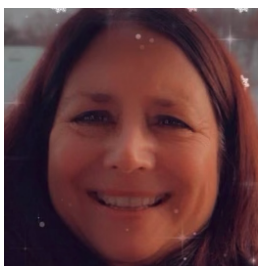
DEANNA KRETTZ

Secretary / Chair, Newsletter
Deanna@crosslakeassociation.org



ROGER & DEBLARSON

Director / Chair, Pine County
Freedom Fest



MARY REUTER

Director / Chair, Water Quality
waterquality@crosslakeassociation.org
612-209-6886

You can reach all board members at:

Info@crosslakeassociation.org

OPEN TREASURER POSITION

Do you enjoy doing bookkeeping work? CLA is currently looking for a treasurer to work a few hours a month. The role would be to oversee the management of the financial affairs of the organization, often including basic tasks of reconciling bank statement, paying invoices, managing cash flow and providing members updates via the newsletter and membership meeting.

If interested, please reach out to Rachel@crosslakeassociation.org

CALENDAR OF EVENTS

MAY 14 8:00 - 2:00pm
Annual Cross Lake
Garage Sale is back!

MAY 21 9:00 - 11:00 AM
Membership Meeting

MAY 27 4:00 - 6:00pm
Happy Hour Boat Tie Up
We will be south of the
sunken island!

JUNE 17 4:00 - 6:00pm
Happy Hour Boat Tie Up
We will be south of the
sunken island!

JUNE 25 Freedom Fest
Pine County Fair Grounds

JULY 4 Boat Parade



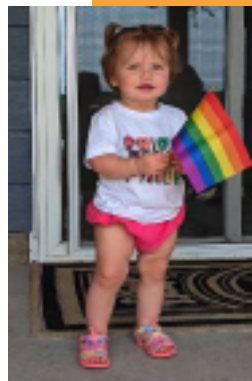
JULY 22 4:00 - 6:00pm
Happy Hour Boat Tie Up
We will be south of the
sunken island!
Bring a beverage!

AUG 4-7 Pine County Fair Booth

AUG 6 Pine County Fair Parade

AUG 27 Concert on the Lake

SEPT Fall Membership Event
More details to come!



AQUATIC PLANT SURVEY

By: Mary Reuter & Don Deutsch

Hello! I'm so excited to see what 2022 brings for the Association and our water quality initiatives!

As you may recall from previous newsletters last year, we contracted with Limnopro Aquatic Science, Inc. in the spring of 2021 to conduct a point intercept survey of Cross Lake.

Here is a summary review of our most important project from 2021:

A full review of the Limnopro/Cross Lake Report can be found on the CLA website and Facebook.

A plant survey was conducted on two separate occasions during the summer. The first survey was done in late spring to coincide with the peak growth of curly-leaf pondweed, which grows early in the season and is an aquatic invasive species (AIS) currently known to infest the lake. The second portion of the survey was done in late summer to determine the specific plant community in the lake over the year after the curly-leaf pondweed died off. Limnopro also looked for new invasive species we did not know about.

The overall survey concluded that the plant coverage in the lake was low, which was likely a result of the poor water clarity.

It was found that the plant community in Cross Lake consists of 29 species of plants or macroalgae. Species richness within the lake was high, but most of the beneficial species found were rare. Beneficial aquatic plants will discourage the growth of undesirable plants



Water Celery

and algae, provide food for fish, filter the water and wildlife, and help stabilize both the shoreline and lake bottom.

The most common native plants found were water celery, waterlilies, coontail, small pondweed, and filamentous algae. We want the common native plants. They are the plants that make the lake healthy.

A total of twenty three (23) acres of curly-leaf was found, which is 5% of the 507 acre littoral zone. Sixteen (16) acres of Eurasian watermilfoil [another AIS known to infest the lake, was found. Approximately six (6) acres of the Eurasian watermilfoil overlapped during part of the year with curly-leaf pondweed.



MN Water Lilly

In theory, all of the curly-leaf pondweed and Eurasian watermilfoil could be removed with either chemical or mechanical means as MN DNR will allow up to 15% of the littoral zone to be treated with chemical or up to 50% of it with mechanical harvesting. At this time, Cross Lake has no plan to harvest mechanically but only continue to treat safely with chemicals.

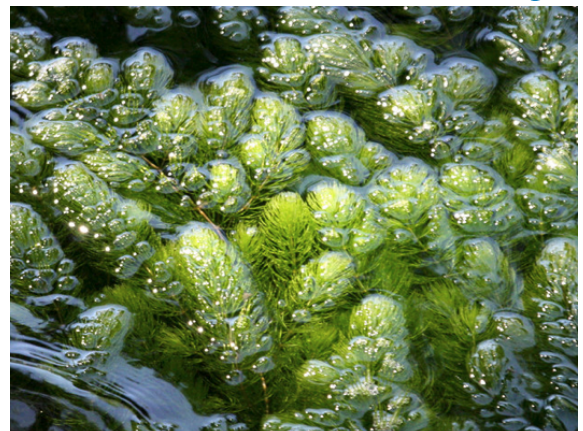


The good news was no additional AIS were detected within Cross Lake during the survey.

Limnopro recommended that CLA continue to monitor and control invasive species to prevent the spread; reduce the potential for AIS to cause harmful effects on the native plant community; continue to monitor water quality; to monitor changes in clarity as it pertains to plant management; and, strive for improvements in clarity to increase native plant coverage.

Other recommendations were to conduct a carp survey and a dye survey, and CLA is currently looking into that this year. Limnopro used a formula from Bajer et al. (2016) (also made available on our website and Facebook) to estimate a carp population of 175 lbs. per acre. However, this is not a reliable number a carp survey would provide us with a reliable number. Carp stir the lake bottom, bring settled Phosphorous back up from the sediment into the water, and increase algae growth..

Filamentous Algae

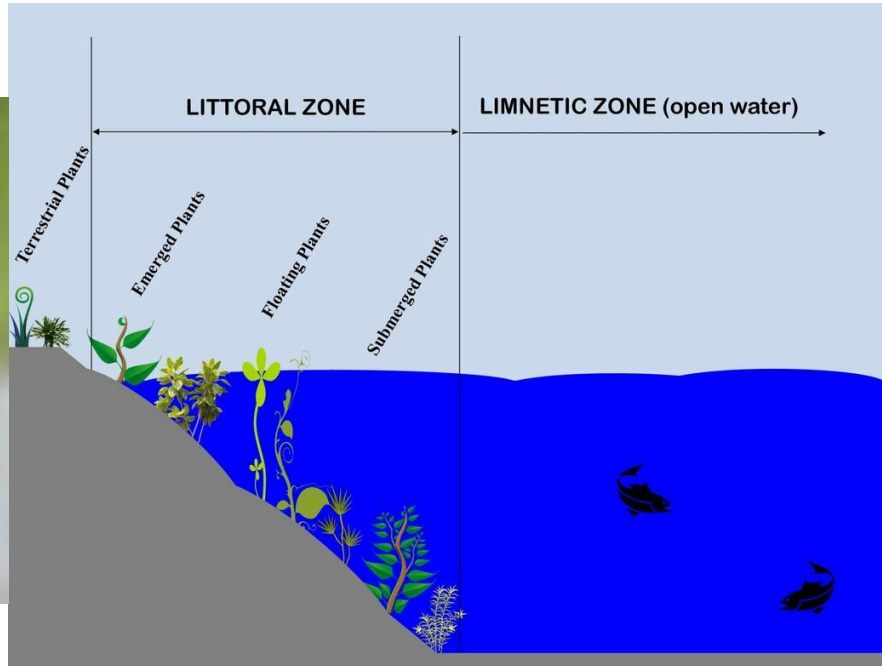


CLA Water Quality is also currently working with the DNR to see if we can use an alternative chemical to treat the AIS.

Limnopro raised questions regarding our current treatments: Currently, CLA uses Curly-Leaf Pondweed Control Program Application of Aquathol K applied at a target rate of 1.0 ppm using a 5' average depth and Eurasian Watermilfoil Control Program Liquid 2,4-D applied at a rate of 2.0 ppm using a 5' average depths. *The question raised is: are these chemicals effective in killing or reducing our invasive plants?* Over the past years, it seems that we continue to treat the same areas with little result. Limnopro suggested that the treatments we are currently doing may be ineffective and that the Eurasian Watermilfoil (EWM) should die if treated with the right amount of chemicals. Our question posed to the County and DNR was, do we need a more vigorous application of the 2, 4-D chemical?

The County verified that the treatment polygons are mostly occurring at about 4'-8' depth, which is good. Suppose the lake association continues with a

Curly leaf Pondweed



treatment of EWM; they recommend CLA consider using ProcellaCOR, noting from the vegetation survey though that EWM and CLP each occupy about 3% of the lake. *Another question the County raised was, is it possible that the vegetation nuisance experienced by boaters is not the AIS but the overall weed abundance?* Because of the low rate of occupancy, the County recommended that it's worth CLA considering backing off of treatment to evaluate if the two species can behave as natives in the system by not increasing and dominating the lake, noting that treatments of small areas (less than 5 acres) are much more susceptible to not making contact with the target plants.

Given the water flow through the system and the treatment areas being pretty small (many sites less than 1 acre), it's possible there aren't sufficient conditions for contact, which supports the "wait and see" approach of stepping back management.

GET INVOLVED!

The DNR recommended that it be a good idea to conduct a dye study on the lake. Such a study will give CLA a better understanding of currents and calculate contact time. It may be that there is insufficient contact time for any chemical to be effective. CLA will contact Lake Management, who applies the herbicide to the lake, to see their experience with dye studies.

The DNR saw the survey as excellent work! The DNR said to keep in mind that ProcellaCOR is much more expensive, and not all herbicide applicators have access to it. They also agreed to a "wait and see" approach but cautioned that waiting too long may allow more "contribution" to the CLP turion seedbed.

Have a great rest of your winter! Enjoy the snow on the lake! Lots to do yet....Ice fishing, snowshoeing, cross country skiing, and of course, ice skating!

Stay tuned for more,

Mary

Coontail



Why do we need to be concerned about phosphorous?

By: Mary Reuter

- Poor water quality is nothing new, and our local water problems didn't just pop-up last year. It's been around for a very long time
- One sign of the lakes poor water quality is the green slime that collects along your lakeshore
- In the 1970's, motorboat props could whip up a trail of soap bubbles that congregated into flotillas of foam. Laundry detergent was the principal source of phosphorous affecting our lakes.

What is the chemical, and how does it get into our lakes?

- Think of phosphorous as plant food because it makes a primary ingredient in fertilizer along with with potash and nitrogen. Phosphorus is essential for forming cell membranes in all living



things. Plants and animals need phosphorus to grow.

If we need phosphorus for life, why is it a problem?

- Excess phosphorus in the soil leaches into our waterways. Harmful algae blooms may be created when a surge of nutrients feeds the ever-present cyanobacteria (aka blue-green algae, which is deadly to wildlife and pets). When too much phosphorus in water and conditions are ripe, harmful algae blooms can occur. Even ordinary healthy algae will bloom to excess levels and will consume oxygen when decomposing leading to oxygen depletion and fish kills.
- The intensity of agricultural production, high fertilizer use, and more significant quantities of manure are part of the equation.

TOGETHER WE
CAN MAKE A
DIFFERENCE

A few sources where phosphorus can come from:

- Fertilizer
- Animal waste
- Yard Clippings
- Wastewater
- Septic Systems
- Soil Erosion - no buffer along the lake shore causing the shore to wash into the lake



What can we do to help?

There is no one simple solution to the phosphorous problem however, following best practices will help lead to a solution.

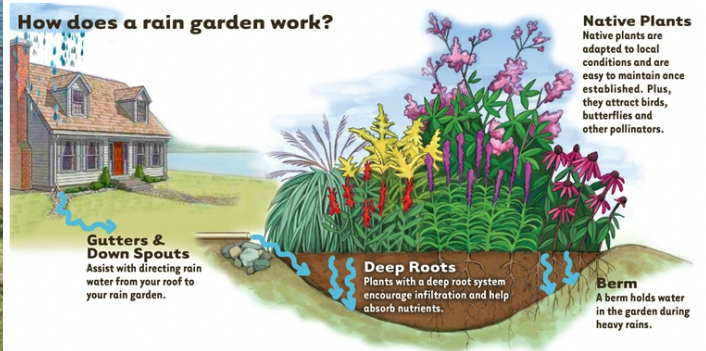
- Add rain gutters to your property
- Restore your shorelines to natural habitat - adding plants to your rip rap
- Keep your yard waste out of the lake
- Keeping domestic and farm animal waste out of the river and lakes
- Make sure your old non-functional septic tanks are capped or removed
- Don't drain your wastewater or sewage into the lake or near the lake when camping

- Eliminate soil erosion by planting a buffer on your shoreline with trees, bushes or native plants
- Help by eliminating big waves near the shoreline which stir up the bottom
- Make every effort to stay 300 ft off the shoreline when out boating
- Reduce or eliminate hard surface run-off from the roads, roofs, driveways, properties on hills
- Plant rain gardens

These are just a few tips, if we all work together we can improve the situation.



Example of well-planned shoreline landscape (Photo credit: Mary Wilson, MSU Extension)



**TOGETHER WE
CAN MAKE A
DIFFERENCE!**

Since 2013 the Snake River Watershed Management Board has completed erosion and pollution control projects, which have reduced phosphorus pollution to the snake river system by 29,000 per year!

Invasive Species (AIS) treatment on Cross Lake

By: Mary Reuter

This year our target goal will be to go after all known Eurasian Water Milfoil and Curly Leaf Pondweed in Cross Lake that was found during the point intercept survey.

Like in previous years, I will again send out a **"Permission To Treat Invasive Aquatic Plants Within 150 Feet Of Shoreline"** to selected homeowners whom the DNR has identified to obtain your signature. The dated and signed approval will then be provided to the DNR, and

a permit will be issued to Cross Lake. The DNR will contact Lake Management, and a date will be scheduled to treat the areas identified. Please note that treatment will be later this year than in previous years (but before July) and will be determined by the DNR and DNR fisheries.

If you feel you have these invasive plants closer to your shoreline, please contact me so we can get your permit extended closer to shore.

maryreuter@gmail.com

612-209-6886



JOIN A COMMITTEE

As the lake continues to see growth we would encourage you to get involved. Current committee openings:

- Water Quality
- Fisheries
- Events
- Merchandise Promotion
- Legal Council
- General



PROPOSED DEVELOPMENT: CROSSLAKE RV PARK BY: LUKE & LESLIE HEGGE

Disclaimer: The objective of this article is to create awareness and provide details to Cross Lake residents. Publishing the article neither indicates support nor opposition for the plan on part of the Assn. Our goal is to enable our residents to create informed opinions with facts. Therefore, we have asked Luke & Leslie to provide first hand account of the details of their proposal. Cross Lake Association will make every effort to work with builders and contractors to support water quality!

Cross Lake/Snake River Association Members:

Thank you for taking the time to look into further details about our RV Park Proposal. We understand this is a heated topic with various opinions and hopefully we can give you a little insight to our project.

What we are proposing is a 70-unit seasonal RV Resort and Campground, located on the corner of County Road 9 (Cross Lake Road) and County Road 10 (Forest Road). The campground will be located on the east side of County Road 9, across the road from the lake. There will not be sites directly on the lake side. We are dedicating 275 feet of lakeshore to this campground, however, don't expect the lakeshore to be fully utilized by these RV Resort goers. We plan on having a fishing pier and approximately 10 boat slips for the entire 70 site guests to use. We do not plan on having any boat landing or lake access for boats to enter, they will need to find an access somewhere else. Most of our seasonal residents will be pulling their camper, therefore won't also be pulling a boat. There will not be a place for them to store their boats and with the limited slips, we do not expect there to be 70 new boats overcrowding the lake.

We want this to be a place where the local "snowbirds" can come back in the summer and spend time with their families - do some fishing, have a BBQ, go swimming. We want this to be a respectful, quiet, family-oriented place. We also intend to work with the DNR to ensure vegetation screening along portions of the shoreline to help improve water quality. The portion of the lake has been neglected and garbage has been collected over the years.

We intend to clean it all up and maintain a nice, clean, beautiful shoreline. We are also working with a wetland delineator that is putting together a plan for the Army Corps of Engineers to stop the drainage from the agricultural fields into the lake. This will dramatically increase water quality in the lake and turn some of our agricultural fields into wetlands. This will be a major benefit to the wildlife and the lake. "

Luke Hegge

ZONING MEETING INFORMATION:

Date: February 24, 2022

Time: 6:00 p.m.

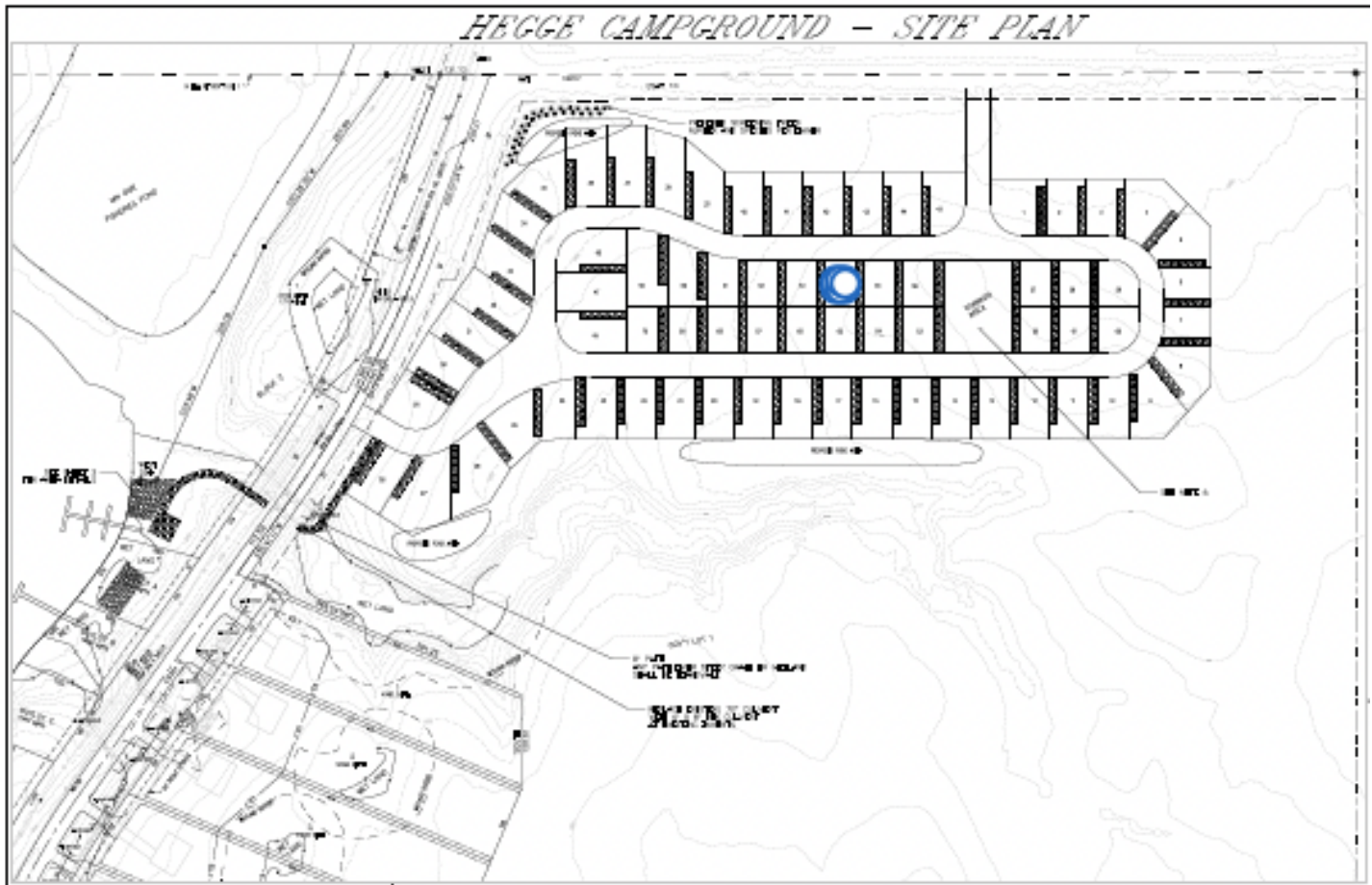
Where: Doug Carlson Room, North Pine Government Center
1602 Highway 23 North Sandstone, MN 55072

Virtual Zoom Meeting:

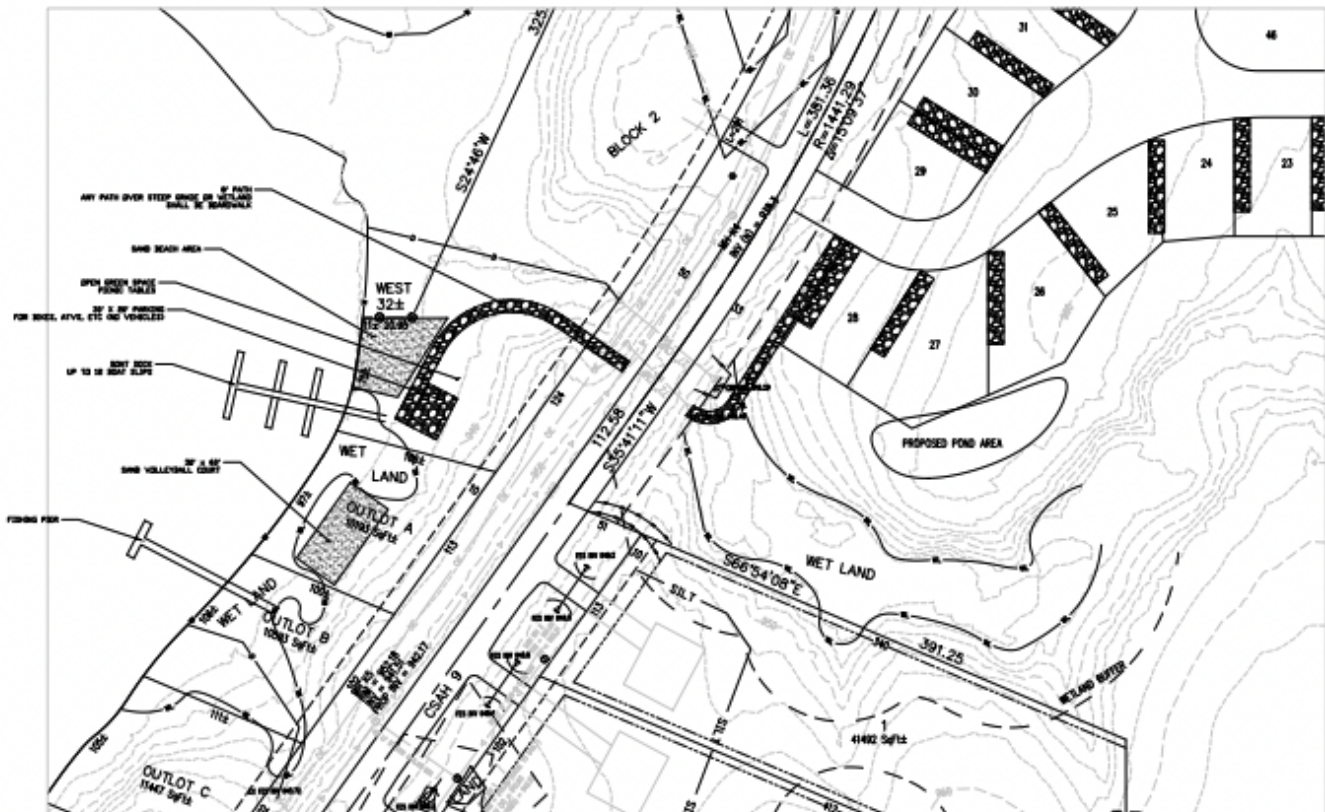
<https://zoom.us/j/91895349703?pwd=RElR0kySzhJa083U3J5NmIvQ1p5dz09#success>

To join by phone: 1-833-548-0282 Meeting ID: 918 9534 9703 Passcode: 938480

PROPOSED RV PARK LAYOUT



HEGGE CAMPGROUND - SHORE AREA MAP



WINTER RECREATION SAFETY TIPS

BY: JOE PAGET

The winter chill is upon us. Cross Lake has become a winter recreational area for ice fishing, cross country skiing, walkers, and snow-mobilers. Before accessing the ice, be sure the ice on the lake is sufficient to support your activity. According to the Minnesota DNR, ice is never completely safe. It is important for each person to check the depth of the ice before you venture out for your activity. The ice depth can be checked with



- 4" Walking (fishing, walking, skating, cross country skiing)
- 5"-7" Snowmobile or ATV
- 8"-12" Car or small pickup
- 12"-15" Medium truck

The DNR cautions, ice is never completely safe. There are several factors that influence the condition and integrity of the ice. Here are a few examples:

- Early season snow falls which insulates the ice from cooler air temperatures
- Large snowfalls created poor ice conditions Thanksgiving 2020.
- The current from a river or under water spring will limit good ice production

Schools of fish or waterfowl activity in an area can create poor ice conditions

Finally, have a pair of "ice claws" readily available whenever you are recreating on the ice. If you do fall through the ice, the claws can assist you in getting out of the water. Have fun while being cautious this winter.

Good Lake Stewards

As you are enjoying all the wonderful recreational opportunities of Cross Lake, take time to be a good steward. Everything discarded on the ice, will eventually go into the lake. Do your part to keep the lake clean by not leaving any trash or equipment behind. Also, do not release your unused bait into the lake. If we all work together, we can keep the lake clean.

STAY SAFE AND HAVE FUN!

an auger or a power drill and a tape measure. Here is the ice thickness recommended by the Minnesota DNR.

- New ice, less than 4 inches STAY OFF!

Ice Cracking

By: Don Deutsch



I read an article in Minneapolis Outdoors recently and I thought it too good not to write to you on this subject.

As an ice fisherman and lake resident I have spent a fair amount of time on the lake. The sounds of ice cracking on a cold night in an ice house have long since lost any the ability to make me feel uncomfortable. I enjoy it as simply being a unique part of the experience. The best lakes for this are the big ones with lots of acres. Mille Lacs, Red Lake, Lake of the Woods, but we do have some of it here as well. I heard it clearly weeks ago as the lake froze. It can also be heard just with lake traffic but this is far

less dramatic. The best way to hear it is from an ice house on a cold night.

Mr. John Downing, Liminologist at the U of M, tells us a ten degree temperature drop can cause a mile of ice to contract by two feet. A ten degree rise can cause a mile of ice to expand to expand a like amount. These changes can cause huge pressures which need to be relieved by cracking and heaving.

What we do not experience here are big pressure ridges which are caused by large scale ice movement. For this I am grateful. It would be very difficult to deal with and we would not have the benefit of a resort to cut ridges and bridge large cracks.

Cross Lake does have it's ice hazards. The greatest being the rivers that flows through and across the lake. Current makes for thin ice and is never safe to drive on. I am happy to say I have never seen divers cross this area but I worry about fishermen from outside the area being unaware of the rivers crossing and mistaking snowmobile paths for ice roads.

Please be safe and enjoy the other face of our beautiful lake.

EVENTS UPDATE

BY: MARGO ROTHENBACHER

It is -19 on this beautiful sunny afternoon as I look forward to the summer months. I'm looking forward to kicking off Cross Lake/Snake River Kindness. Look for "Kindness Bins" at some of our events to collect food shelf donations throughout the year.

In addition, get your thinking caps on as the 4th of July Parade is right around the corner and the board will be discussing some changes with the parade. This is always a fun event to be part of as well as a spectator. We will keep you posted with more information as the event gets closer.

"Concert on Cross Lake" will be on Saturday, Aug. 27. Hwy 36 Rock Band will be performing for us again. Last year we collected over 200# of food and \$160 for the local food shelf! Help us top that this year!!

Lastly, the dinner dance is coming back. Stay tuned as event information unfolds.

Getting Your Boat Ready for the Water!

By: Captain Ron

After a winter of storage there are a few things to do before your boating season; If you're not using a fuel additive on carbureted motors, removing the carb drains and flushing a little fuel through by pumping the primer helps initial start up for the year. The drain plug is brass and generally on the side of the fuel bowl. This will also flush any potential residue from the bowls.

- Remove and dump the water separator located under the cowl, or change the remote filter if so equipped.
- Charge the battery overnight before heading to the water. Removing for the winter and storing indoors gives a longer service life.
- Checking or replacing spark plugs.
- Check the recoil rope if equipped. They can fray over time. They are much easier to replace before they break.
- Some 4 stroke engines require a periodic valve adjustment. It's pretty easy to do and most user or shop manuals will cover the procedure in detail.
- Top off with fresh fuel. If your fuel is more than a year old, it's best to flush it out and replace, especially if a running additive isn't used. Some additives will extend fuel life to two years.
- Always use a running additive, especially if the boat isn't used on regular basis. Startron, Driven, Sea Foam etc. are all good additives. If you run oxygenated fuel, an additive specifically designed for that is required. It's cheap insurance.
- Check your gear case lube and replace if there is any moisture or if it looks burned. This would generally be something you'd do in the fall, but either way, it needs to be done. If there are any leaks, that must be addressed. I/O boats have an upper gimbal drive to service as well as other specific items that outboards don't. Check the owner's manual for your specific model.
- Check propeller nut for proper torque. If it's loose, remove the prop and check the thrust washer for wear and replace as needed. Grease the splines/install and torque with the correct locking tab or new cotter key.
- pump flow while running. Make sure your visual water indicator is spraying and has good pressure. It's not uncommon to need to replace the water pump impeller every 5 years on a

boat that sees regular use. Even as a precaution, it's cheap insurance. The pump impeller will get brittle over time and can fail rather suddenly.

Trailer Check Up

- Check your lights, lenses and trailer connections. Service or replace wheel bearings as required. Jack up each wheel and give it a spin. Check for loose bearings. The bearings should not be noisy. If there are grease zerks, now is the time to hit those.
- Grease all the zerks in on the tiller and trim components.
- Inspect and lube steering cables as required.-
- Run the trim through its range and observe for any jerky motion that could indicate low fluid, pump problems or a leak.
 - Check all the lights, pumps, accessories etc. Those items are much easier to repair before you're on the water. Finding out your bilge pump doesn't work when you need it is the worst!
 - Fire up the motor with an appropriate water source and check for adequate-
 - Check for broken leaf springs, shackles and the ball coupler. These items can fail and cause big problems on the road if left unmaintained. The ball coupler can be adjusted on most with the tension nut underneath, behind the lock tongue.
- Check your winch strap and safety line. On trailers that are stored outside, be especially aware to make sure they're not deteriorating. Check the condition of all your hold down straps and hardware too.
- Once your boat is off the trailer, at the launch, check your bunks and rollers on occasion. Wooden bunks will rot under the carpet. If they fall off during launching, the metal brackets will do substantial damage to your boat bottom.

ENGINE MAINTENANCE





HELP SUPPORT WATER QUALITY AT THE CITY-WIDE

CLA is joining the PARTY known as the Citywide Garage sale on May 14th and we are stoked! Mark your calendars and plan to stop on by!

DATE: Saturday, May 14th 7am to 2pm

WHERE: 16314 EDGEWATER ROAD NE

We are looking for donated items to sell. Do you have items that you are looking to part with, we are here for **YOU!** Below you will find the collection dates/times or contact us to make alternate arrangements. Do you have items too big to move? Not a problem, email a photo to us and we will post on the bulletin board at the sale.

You know the ol' saying...one man's junk is another man's treasure. Stop on by, say hi, browse some treasures and help support the Cross Lake / Snake River Association raise funds for water quality! What better excuse do you need to go shopping, mingle with other Cross Lake/Snake River residents and enjoy the day!

COLLECTION DATES & LOCATION

Starting Thursday May 5th @ 4:00pm you can drop off your treasures at 16314 Edgewater Road NE, Pine City, MN (look for the signs)

Should you have any questions, please email: info@crosslakeassociation.com

or

Contact Shanie Berry via text or voice at 651.230.6986

GET INVOLVED, BECOME A MEMBER TODAY!

By: *Shanie Berry*

WHY SHOULD YOU BECOME A MEMBER?

- Water Quality Stewards
- Water Testing
- Invasive Weed Management
- Education
- Community
- Recreation
- Fisheries
- and much more.....



MEMBERSHIP YEAR OVER YEAR.....

2021	=	181
2020	=	195
2019	=	226
2018	=	211
2017	=	187

I'm excited to be back chairing the 2022 Membership committee! With a little luck, by the time you are reading this, you have already received your membership information and maybe even registered as our newest member of 2022!

If not, we hope you will take this opportunity to run right over to our website at <https://crosslakeassociation.org> and get yourself registered! If you prefer to mail in your support, we have conveniently included a membership registration form on the last page of this newsletter.

Our lake needs your help to manage some of the opportunities it is facing. The biggest issue our lake faces is directly & indirectly relate to the overall *phosphorus* level in the lake. There are many things that can be done to help manage these levels. However, for the Association to continue to **monitor, detect** and **advocate** for corrective action, we must have your support.

Last year, we experienced the lowest number of members in 5 years. This surely creates cause for concern. The lake/river has close to 600 households within our domain. Sadly, we are seeing less than a 30% rate of support. My goal is to make 2022 our comeback year! Can we beat 200 members? Can we surpass the 5-year high mark?

Our basic membership is only \$25. However, we have created a flexible, tax deductible, donation structure that will allow for your additional support, at any level of your choosing!

I hope you will join us in protecting your *investment* by supporting the water quality of Cross Lake/Snake River for generations to come. Please encourage your neighbors and visitors of the lake to protect our precious asset. I hope you'll help us make 2022 Membership one for the books!

If you have any questions regarding your membership, please don't hesitate to contact me. As well, I am always looking for ideas on how we can continue to retain & recruit new members! If you have ideas and/or feedback for us, please reach out!

JOIN TODAY AND HELP US ACHIEVE OUR GOAL!





Serving Cross Lake and the Lower Snake River

Cross Lake Association
P.O. Box 325
Pine City, MN 55063

Non-Profit
U.S. Postage
PAID
Pine City,
MN 55063
Permit No. 8

Forwarding Service Requested

MEMBERSHIP APPLICATION

MEMBERSHIP YEAR RUNS JANUARY 1 THROUGH DECEMBER 31, 2022

Online registration and payment are available on our website at <https://crosslakeassociation.org>

Name: _____

Address: _____

City, State, Zip _____

Email: _____

Pine City Address if different from above:



**Let's be green, please email me my newsletter!
I WANT TO GET INVOLVED!**

- Water Quality
- Board Member
- Freedom Fest
- Events
- Fisheries
- Fair Booth
- Parade
- Other special skill or talent: _____

Premiere/Lifetime	\$500+	
Platinum	\$100+	
Gold	\$75+	
Silver	\$50+	
Basic	\$25	