



COAL CONCEPTS PROFICIENCY TESTING

GENERAL ANALYSIS SAMPLE

REPORT – ONE HUNDRED AND SEVENTY-ONE

Revision 00

Final report

DATE ISSUED 31st JANUARY 2026

PARTICIPANT

LABORATORY CODE: a

R BABOOLAL (SCHEME MANAGER)

SCHEME COORDINATOR: S MAMABOLO

*Disclaimer: Opinions and interpretations expressed herein are outside the scope of SANAS accreditation
*Moisture in the analysis sample is not included in the SANAS schedule of accreditation as robust statistics cannot be applied.
Chlorine, Fluorine, Quick ash, ASTM ash and ASTM Volatiles is not included in the scope of accreditation.*

THINKING QUALITY, QUALITY THINKING

REGISTRATION NUMBER: 2006/149731/23 (RMB INDUSTRIAL STATIONERS cc t/a)

81 CERAMIC CURVE, ALTON, RICHARDS BAY 3900 | TEL: +27(0)35 751 2446 | CEL: +27(0)83 6500151 | FAX: 0862605793

E-MAIL: ravi@coalconcepts.co.za | labsup@coalconcepts.co.za

EXECUTIVE SUMMARY

1. Ninety-seven samples were sent to participants with 89 results submitted timeously.
2. The total number of outliers detected were as follows (dry base):
 - Quick Ash x 2
 - ISO Ash x 4
 - Volatile matter x 7
 - Calorific value x 4
 - Total Sulphur x 1
 - Hydrogen x 1
 - AFT Def x 1, Soft x 1, Hemi x 1, Flow x 1
 - ASTM Ash x 1
 - ASTM Volatile matter x 1
3. Chlorine, Fluorine, ASTM Ash, ASTM Volatile Matter participants were insufficient to apply robust statistical calculations.
4. Trending for your laboratory is as follows:

TABLE OF CONTENTS

ITEM	PAGE NUMBER
Letter to participant	4
List of participants	5
Type of sample used	6
Preparation of sample	6
Homogeneity check	6
Stability check	7
ISO Ash data	8
ISO Ash z-score trend	9
Quick Ash data	10
Quick Ash trend	11
ISO Volatile matter data	12
ISO Volatile matter z-score trend	13
Calorific value data	14
Calorific value z-score trend	15
Total sulphur data	16
Total sulphur z-score trend	17
Phosphorous data and Z-Score trend	18
Carbon data / Hydrogen data / Nitrogen data	19
AFT data and z-scores	20
ASTM Ash, ASTM Volatile, Chlorine & Fluorine	21
Conclusion	22
Terms & Conditions	23

Dear Participant

RE: PROFICIENCY TESTING RESULTS FOR THE MONTH OF JANUARY 2026

Thank you for your participation in the Coal Concepts proficiency testing scheme.

Your laboratory code is as per the cover page.

All results are totally confidential. Any results in ***and Underlined*** are outliers. Where applicable, the most extreme outliers have been eliminated from calculations using the Grubbs estimate for outliers. Robust statistics has been applied where possible. Analysis results have been reported on air dry and dry base. The dry base results have been used to calculate the z-scores. The z-scores are calculated by subtracting the average from the participant result then dividing by the standard deviation. **Note: All decimals are carried in the z-score calculation and only rounded off at the end of the calculation.**

Please take note of the following:

1. Z-scores between -1 and +1 is deemed acceptable
2. Z-scores between -2 and -3 should serve as a warning that the analysis result could get worse
3. Z-scores between +2 and +3 should also serve as a warning that analysis results could get worse.
4. Z- scores lower than -3 and exceeding +3 should warrant an investigation
5. Compare your result to the robust average which will be the assigned value. The measurement of uncertainty (UoM) of the results is also stated.

6. Z-Score calculation : $z\ score = \frac{(Lab\ result - Average\ result)}{Standard\ Deviation}$

7. Measurement protocols (SANAS R80, ISO/IEC 17043:2023, clause 7.1.2); Analysis accredited parameters can be carried out using techniques as follows:

ISO Ash – ISO 1171

ISO Volatile matter – ISO 562

Calorific Value determinations – ISO 1928/ASTM D5865

Total Sulphur Determination – ISO 19579 / ASTM D4239

Phosphorus in Coal – BS 1016/ISO 622/ XRF

CHN – ISO 29541 /ASTM D5373

AFT – ISO 540

8. Five consecutive z-scores above the zero line is considered a positive bias and five consecutive z-scores below the zero line is considered a negative bias. Note that this is guideline/suggestion form Coal Concepts and your quality system requirements may differ.

The Coal Concepts scheme adheres to the requirements of ISO/IEC 17043 – Conformity assessment – General requirements for proficiency testing.

Statistical analysis has been carried out using ISO/IEC 13528-Statistical methods for use in proficiency testing by interlaboratory comparisons, including procedures used to statistically analyse data, establishment of any assigned value, standard deviation and its uncertainty.

Please find results attached together with Z-score trends.

Best Regards

R Baboolal

LIST OF PARTICIPANTS

Africoal	Laboratory for solid fuels-Mining Institute Belgrade
Afisam Dudfield	Labrite Lab
Ađri İbrahim Çeçen Üniversitesi	Labrite highveld
AH Knight	Leon Testing Pakistan
Anglo Coal Goedeheop North Plant	Mafube Coal
Anglo Greenside (Thungela)	Matil Lab
Anglo Landau	Mfulawamanzi
Aqua Specto	Ministry of Energy and Mineral Resources - Kingdom of Jordan
ArcelorMittal VDP	Mitra SK Morocco
Azuresky Pty LTd	Mitra SK Richards Bay
Best enough - NCC	ML Coal
Best enough - 2 Seam	Moruple
Best enough Laboratory -Springs	Msobo Coal
Bestech Anthra Siding- Ermelo	Nelson Mandela University
Bestech Madini Mining Witbank	Noko Analytical laboratories (Witbank)
Bestech Vlakfontein Mine-Ogies	Noko Ntshovelo
Bestech Zomhlaba Resource Mine -Delmas	Noko Piet Retief
Botswana Power Corp - B Power Station	Noko Welgemeend
Botswana Power Corporation - A Power Station	PJS Laboratory services Middelburg
Bureau Veritas Inspectorate Laboratories - Alton	PJS Laboratory services Salaria
Bureau Veritas Inspectorate Laboratories - Middelburg	PJS Laboratory services Weostellen
BV Matola Laboratory	PSB Analytical Services Netherlands
BV Moatize	Profi Lab Doo
BV Nacala	Rafinerija Nafta Beograd AD
Castle Peak Power Station	RC Inspection
CCIC City Deep	Richards Bay Minerals
CCIC Richards Bay	Ronewa Lab
celiklerholding	Ronewa Lab Gugulethu
Coal Connect Lab Services	Ronewa Wescoal
Coal Concepts Richards Bay Lab	Ruvuma Coal (Pty) Ltd
Cotecna Lurco	SA Labs Ihtuba – Khanye
Cotecna Middelburg	SA Labs Ihtuba – Middelburg
Cotecna Mimoso	SA Labs Ihtuba – Ukufisa
Cotecna Nasonti	SA Labs Ihtuba – ZAC
Cotecna Phola	SABS CSIR
Cotecna Richards Bay Lab	SABS Uitkomst
Cigroup	Sappi
Department of Energy Philippines	SB Mining Solutions - Belfast
Dicem	Seriti Kriel Colliery
Ensayos técnicos Labmin SRL-Peru	Seriti New Denmark
Eskom Arnot	Seriti New Vaal
Eskom Camden	Sibonisiwe Clewer
Eskom Duvha	Sibonisiwe Middelburg
Eskom Erid	Sibonisiwe Ritvlei
Eskom Erid TGA	Siza Coal Services - Botswana
Eskom Grootvlei	Siza Coal Services - Kinross
Eskom Kendal	Siza Labs sampling & Testing Pty Ltd Zambezi Gas & Coal Mine
Eskom Kriel	Siza Leeuwpan
Eskom Lethabo	Siza Matsambisa
Eskom Majuba	Siza Mgayo
Eskom Matimba	Siza Middelburg
Eskom Matla	Siza Minerals Lab - Gaborone
Eskom Medupi	Siza NBC
Eskom Tutuka	Siza Sasol
Exxaro Matla	Siza Umlalazi
Fauji Fertilizer Bin Qasim Limited	Siza WestCoal
G & W Minerals	South 32 Khutala
General Directorate of Coal Enterprises of Turkey	Turkey ELI
Genet Inyanda	UAS Areshomeng
Genet Klipfontein	UAS Botswana
Geological Survey of Tanzania	UAS Hendrina
Geoscience	UAS-Khashani
Glencore Boshhoek	UAS Main Lab
Glencore Lion	UAS Sasol SCS
Glencore Wonderkop	UAS Twistdraai
Gölbaşı Kimya Laboratuvarı İşletme Müdürlüğü	UIS
HighVeld Lab	Umlabu processing PTY Ltd
Hwange Colliery	Universal Geominerals Sdn Bhd - Malaysia
Idwala Lime	Vinca Institute - Serbia
Imbally (Pty) Ltd	Vitrovian
IZANLAB LABORATUVARLARI A.Ş.	Yatagan Termik
İZMİR KÖMÜR LABORATUVARI	Yildiz Labs - Turkey
Jindal Kiepersol	Ykenerji
Jindal Mozambique	
Jugoinspekt Belgrade AD Serbia	
KELEBEK KİMYA ÇEVRE LABORATUVARLARI PETROL GIDA	

1. TYPE OF SAMPLE USED

The coal used in this proficiency testing round was bituminous coal.

2. PREPARATION OF SAMPLE

Approximately 1000kg's of coal with an approximate top size of 50mm was sourced. This was crushed to -4mm using a jaw crusher. The -4mm material was reduced to -212um using a cross-beat pulveriser. The 212 material was sieved using a 212um screen. Any +212um material was pulverised and sieved until all material passed through the 212-um sieve.

All the -212um material was then mixed in a mixing drum for 4 hours.

3. HOMOGENEITY CHECK

There were approximately 114 participants in this round, 10 portions of sample were randomly extracted. These were packaged in their final form i.e. in 200ml sample bottles. The bottles were labelled 1 to 10. The results were as follows:

SAMPLE NO.	TEST PORTION 1	TEST PORTION 2	sample av (Xt)	range (Wt)	range sqd
1	40,56	40,59	40,58	0,03	0,0009
2	40,55	40,39	40,47	0,16	0,0256
3	40,67	40,69	40,68	0,02	0,0004
4	40,55	40,63	40,59	0,08	0,0064
5	40,75	40,65	40,70	0,10	0,0100
6	40,71	40,64	40,68	0,07	0,0049
7	40,76	40,64	40,70	0,12	0,0144
8	40,82	40,75	40,79	0,07	0,0049
9	40,07	40,83	40,45	0,76	0,5715
10	40,82	40,79	40,81	0,03	0,0009
GENERAL AVERAGE			40,64		
STANDARD DEVIATION			0,120		
WITHIN SAMPLE STANDARD DEVIATION			0,179		
BETWEEN SAMPLE STANDARD DEVIATION			0,041		

The between sample standard deviation must be $\leq 0.3 \times \sigma$

(σ = std deviation for the proficiency assessment)

$\sigma = 0.818$ was used, which is the repeatability for ISO ash (Ash % > 10%)

Hence = $0.813 \times 0.3 = 0.244$

Since 0.041 < 0.244 the samples are homogenous.

4. STABILITY CHECK

Samples were retained for sales as reference material. Ten of them were randomly chosen for stability testing. In order for the proficiency testing samples to be declared stable the general average from the homogeneity check and that of the stability check the difference in the general average should not differ by more than 0.3 X precision.

This test has been carried out about a month after the samples were received by the participating laboratories.

SAMPLE NO.	TEST PORTION 1	TEST PORTION 2	sample av (Xt)	range (Wt)	range sqd
1	40,70	40,68	40,69	0,02	0,0004
2	40,67	40,67	40,67	0,00	0,0000
3	40,77	40,66	40,72	0,11	0,0121
4	40,73	40,64	40,69	0,09	0,0081
5	40,67	40,60	40,64	0,07	0,0049
6	40,69	40,65	40,67	0,04	0,0016
7	40,78	40,62	40,70	0,16	0,0256
8	40,74	40,61	40,68	0,13	0,0169
9	40,72	40,66	40,69	0,06	0,0036
10	40,71	40,65	40,68	0,06	0,0036
GENERAL AVERAGE			40,68		
STANDARD DEVIATION			0,021		
WITHIN SAMPLE STANDARD DEVIATION			0,062		
BETWEEN SAMPLE STANDARD DEVIATION			0,038		

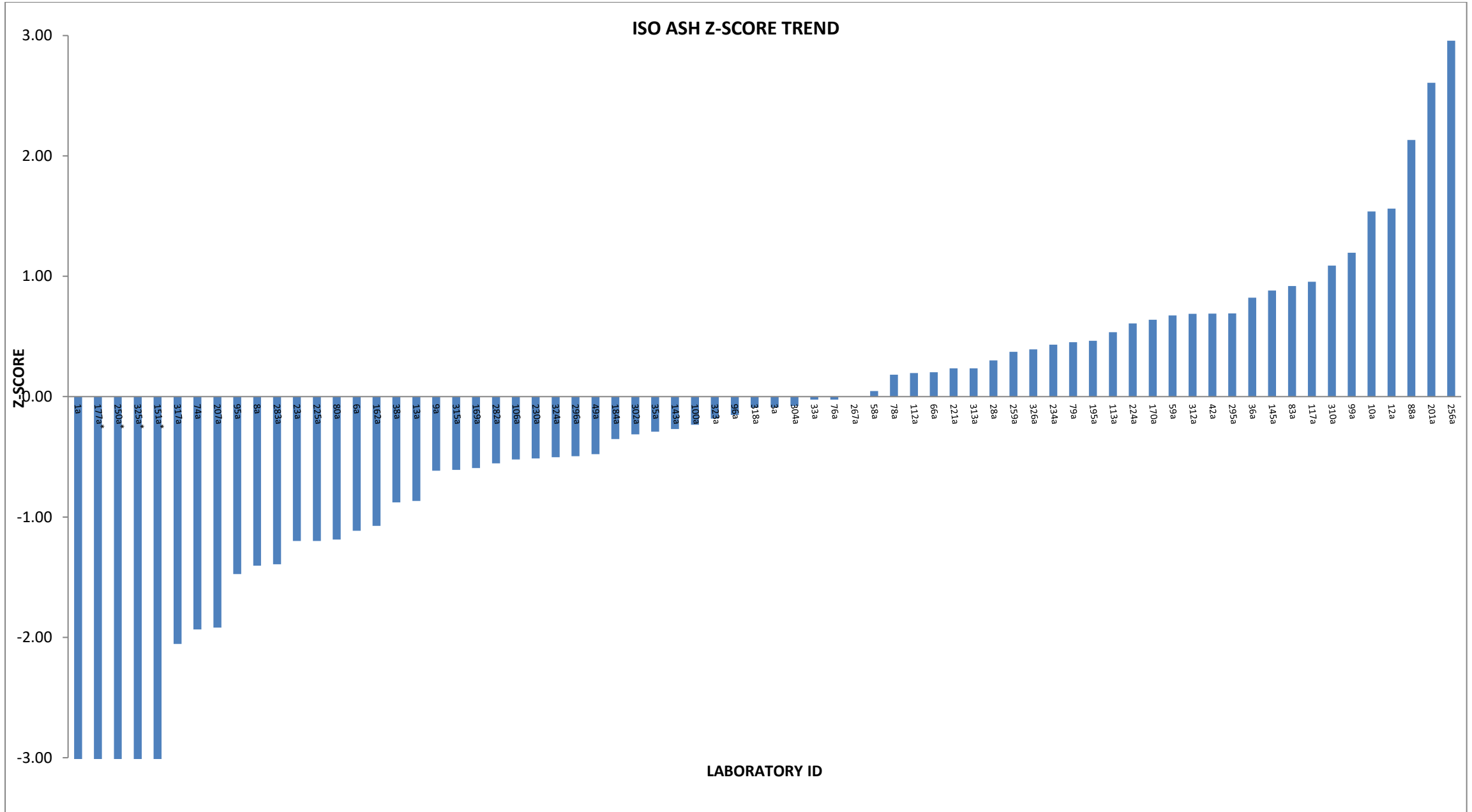
($\sigma = 0.813$ was used)

For this report 0.244 was used

Absolute value of (40.64– 40.68) = 0.004

Since 0.004 < 0.244 the proficiency testing samples were stable

COAL CONCEPTS - PROFICIENCY TESTING - JANUARY 2026					
ANALYTICAL PARAMETER: ISO ASH (%)					
LAB ID	MOISTURE IN ANALYSIS SAMPLE (%)	AIR DRY (%)	DRY BASE (%)	Z-SCORE (DRY BASE)	
<u>1a</u>	3,85	<u>11,85</u>	<u>12,32</u>	<u>-131,16</u>	
3a	5,10	40,60	42,78	-0,09	
6a	6,12	39,94	42,54	-1,11	
8a	6,30	39,80	42,48	-1,41	
9a	6,00	40,10	42,66	-0,62	
10a	6,07	40,54	43,16	1,54	
12a	6,43	40,39	43,17	1,56	
13a	5,66	40,19	42,60	-0,87	
23a	5,70	40,10	42,52	-1,20	
28a	6,00	40,30	42,87	0,30	
33a	5,60	40,40	42,80	-0,03	
35a	6,40	40,00	42,74	-0,29	
36a	5,80	40,50	42,99	0,82	
38a	6,10	40,00	42,60	-0,88	
42a	5,50	40,60	42,96	0,69	
49a	5,93	40,16	42,69	-0,48	
58a	5,38	40,51	42,81	0,05	
59a	6,12	40,33	42,96	0,67	
66a	6,72	39,97	42,85	0,20	
74a	6,50	39,60	42,35	-1,93	
76a	5,60	40,40	42,80	-0,03	
78a	6,08	40,24	42,84	0,18	
79a	6,66	40,05	42,91	0,45	
80a	5,80	40,06	42,53	-1,19	
83a	5,64	40,59	43,02	0,92	
88a	6,00	40,70	43,30	2,13	
95a	6,50	39,70	42,46	-1,47	
96a	6,19	40,12	42,77	-0,15	
99a	6,50	40,28	43,08	1,19	
100a	5,40	40,44	42,75	-0,23	
106a	5,72	40,24	42,68	-0,52	
112a	5,83	40,35	42,85	0,20	
113a	5,98	40,36	42,93	0,54	
117a	6,10	40,40	43,02	0,96	
143a	6,06	40,15	42,74	-0,27	
145a	5,90	40,47	43,01	0,88	
<u>151a*</u>	6,40	<u>39,10</u>	<u>41,77</u>	<u>-4,43</u>	
162a	6,00	40,00	42,55	-1,07	
169a	5,73	40,22	42,66	-0,59	
170a	5,52	40,58	42,95	0,64	
<u>177a*</u>	4,34	39,60	<u>41,40</u>	<u>-6,05</u>	
184a	5,90	40,20	42,72	-0,35	
195a	5,71	40,46	42,91	0,46	
201a	6,70	40,50	43,41	2,61	
207a	5,80	39,90	42,36	-1,92	
221a	6,20	40,20	42,86	0,23	
224a	6,32	40,23	42,94	0,61	
225a	5,70	40,10	42,52	-1,20	
230a	5,49	40,34	42,68	-0,51	
234a	6,30	40,20	42,90	0,43	
<u>250a*</u>	2,63	40,34	<u>41,43</u>	<u>-5,91</u>	
256a	6,30	40,75	43,49	2,96	
259a	5,57	40,50	42,89	0,37	
267a	5,96	40,25	42,80	0,00	
282a	6,50	39,90	42,67	-0,55	
284a	5,60	40,10	42,48	-1,39	
295a	5,57	40,57	42,96	0,69	
296a	5,71	40,25	42,69	-0,50	
302a	5,92	40,20	42,73	-0,31	
304a	5,69	40,35	42,78	-0,08	
310a	6,40	40,30	43,06	1,09	
312a	6,43	40,20	42,96	0,69	
313a	6,20	40,20	42,86	0,23	
315a	5,30	40,40	42,66	-0,61	
317a	5,73	39,90	42,33	-2,05	
318a	5,80	40,30	42,78	-0,09	
323a	5,87	40,25	42,76	-0,18	
324a	5,87	40,18	42,69	-0,50	
<u>325a*</u>	3,60	40,00	<u>41,49</u>	<u>-5,63</u>	
326a	6,00	40,32	42,89	0,39	
Number of results	-	70	70	70	-
OUTLIERS	-	-	2	4	-
AVERAGE	-	5,83	40,24	42,80	-
STD DEVIATION	-	-	0,25	0,23	-
MEDIAN	-	-	40,25	42,80	-
%RSD	-	-	0,61	0,54	-
ROBUST AVERAGE	-	-	40,24	42,79	-
ROBUST STD DEVIATION	-	-	0,27	0,25	-
UoM	-	-	0,04	0,04	-

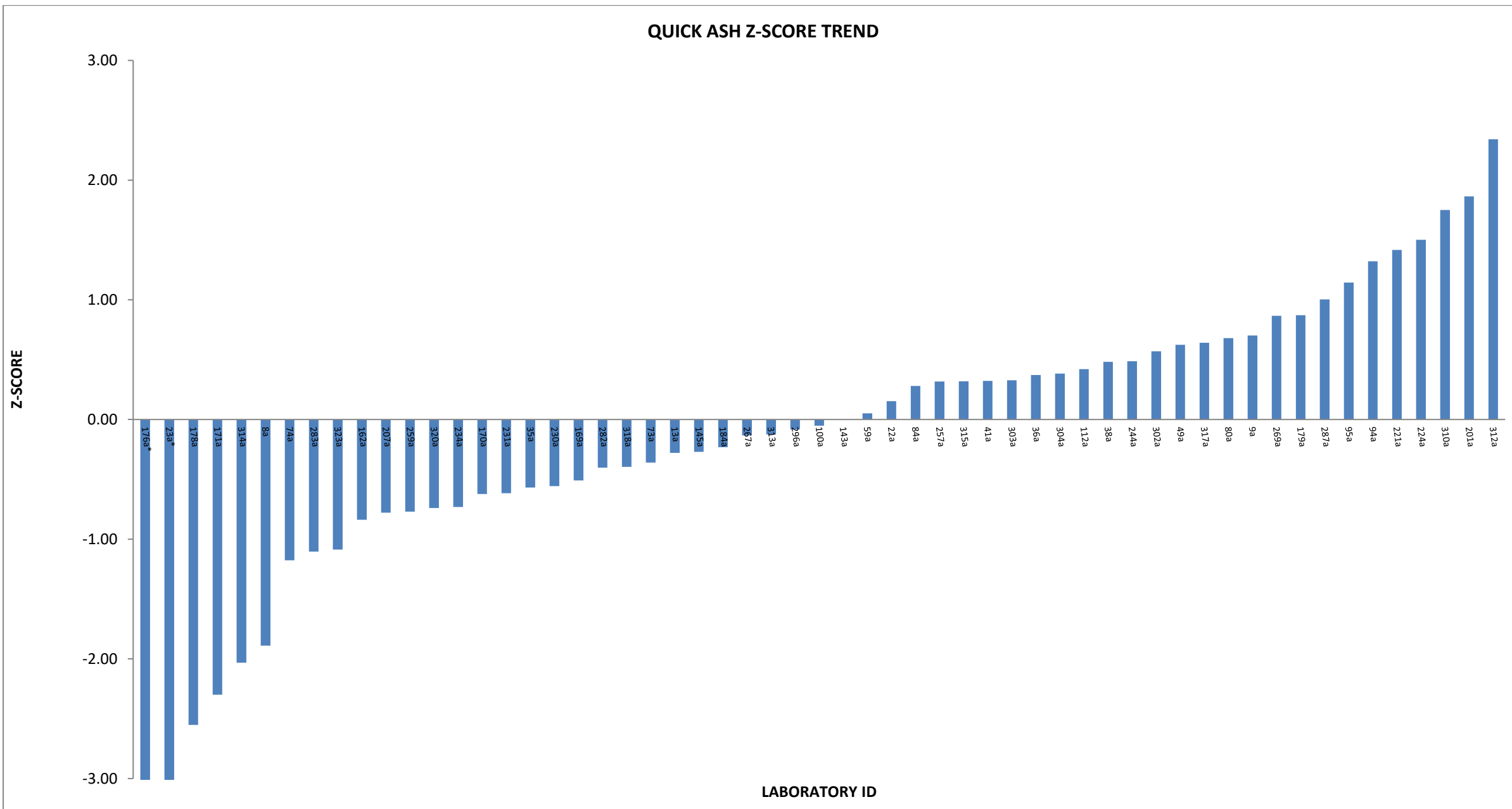


COAL CONCEPTS - PROFICIENCY TESTING - JANUARY 2026

ANALYTICAL PARAMETER: QUICK ASH (%)

LAB ID	MOISTURE IN ANALYSIS SAMPLE (%)	AIR DRY (%)	DRY BASE (%)	Z-SCORE (DRY BASE)	
8a	6,30	39,50	42,16	-1,89	
9a	6,00	40,30	42,87	0,70	
13a	5,66	40,19	42,60	-0,28	
22a	5,90	40,20	42,72	0,15	
23a*	5,70	38,60	40,93	-6,31	
35a	6,40	39,80	42,52	-0,57	
36a	5,80	40,30	42,78	0,37	
38a	6,10	40,20	42,81	0,48	
41a	5,70	40,33	42,77	0,32	
49a	5,93	40,31	42,85	0,62	
59a	6,12	40,08	42,69	0,05	
73a	6,15	39,96	42,58	-0,36	
74a	6,50	39,60	42,35	-1,18	
80a	5,80	40,38	42,87	0,68	
84a	5,65	40,34	42,76	0,28	
94a	5,91	40,50	43,04	1,32	
95a	6,50	40,20	42,99	1,14	
100a	5,40	40,36	42,66	-0,05	
112a	5,83	40,30	42,79	0,42	
143a	6,06	40,09	42,68	0,00	
145a	5,90	40,09	42,60	-0,27	
162a	6,00	39,90	42,45	-0,84	
169a	5,73	40,10	42,54	-0,51	
170a	5,52	40,16	42,51	-0,62	
171a	4,12	40,31	42,04	-2,30	
176a*	5,87	4,60	4,89	-136,63	
178a	4,70	40,00	41,97	-2,55	
179a	5,87	40,40	42,92	0,87	
184a	5,90	40,10	42,61	-0,23	
201a	6,70	40,30	43,19	1,86	
207a	5,80	40,00	42,46	-0,78	
221a	6,20	40,40	43,07	1,42	
224a	6,32	40,37	43,09	1,50	
230a	5,49	40,19	42,52	-0,56	
231a	5,90	40,00	42,51	-0,62	
234a	6,30	39,80	42,48	-0,73	
244a	5,87	40,30	42,81	0,49	
257a	6,00	40,20	42,77	0,32	
259a	5,57	40,10	42,47	-0,77	
267a	5,96	40,10	42,64	-0,13	
269a	6,10	40,30	42,92	0,87	
282a	6,50	39,80	42,57	-0,40	
284a	5,60	40,00	42,37	-1,10	
287a	5,95	40,40	42,96	1,00	
296a	5,71	40,22	42,66	-0,08	
302a	5,92	40,30	42,84	0,57	
303a	5,89	40,25	42,77	0,33	
304a	5,69	40,35	42,78	0,38	
310a	6,40	40,40	43,16	1,75	
312a	6,43	40,54	43,33	2,34	
313a	6,20	40,00	42,64	-0,12	
314a	5,50	39,80	42,12	-2,03	
315a	5,30	40,50	42,77	0,32	
317a	5,73	40,40	42,86	0,64	
318a	5,80	40,10	42,57	-0,40	
320a	4,93	40,38	42,47	-0,74	
323a	5,87	39,89	42,38	-1,09	
Number of results	-	57	57	57	-
OUTLIERS	-	-	2	2	-
AVERAGE	-	5,87	40,17	42,68	-
STD DEVIATION	-	-	0,23	0,28	-
MEDIAN	-	-	40,20	42,68	-
%RSD	-	-	0,56	0,65	-
ROBUST AVERAGE	-	-	40,18	42,68	-
ROBUST STD DEVIATION	-	-	0,24	0,29	-
UoM			0,04	0,05	

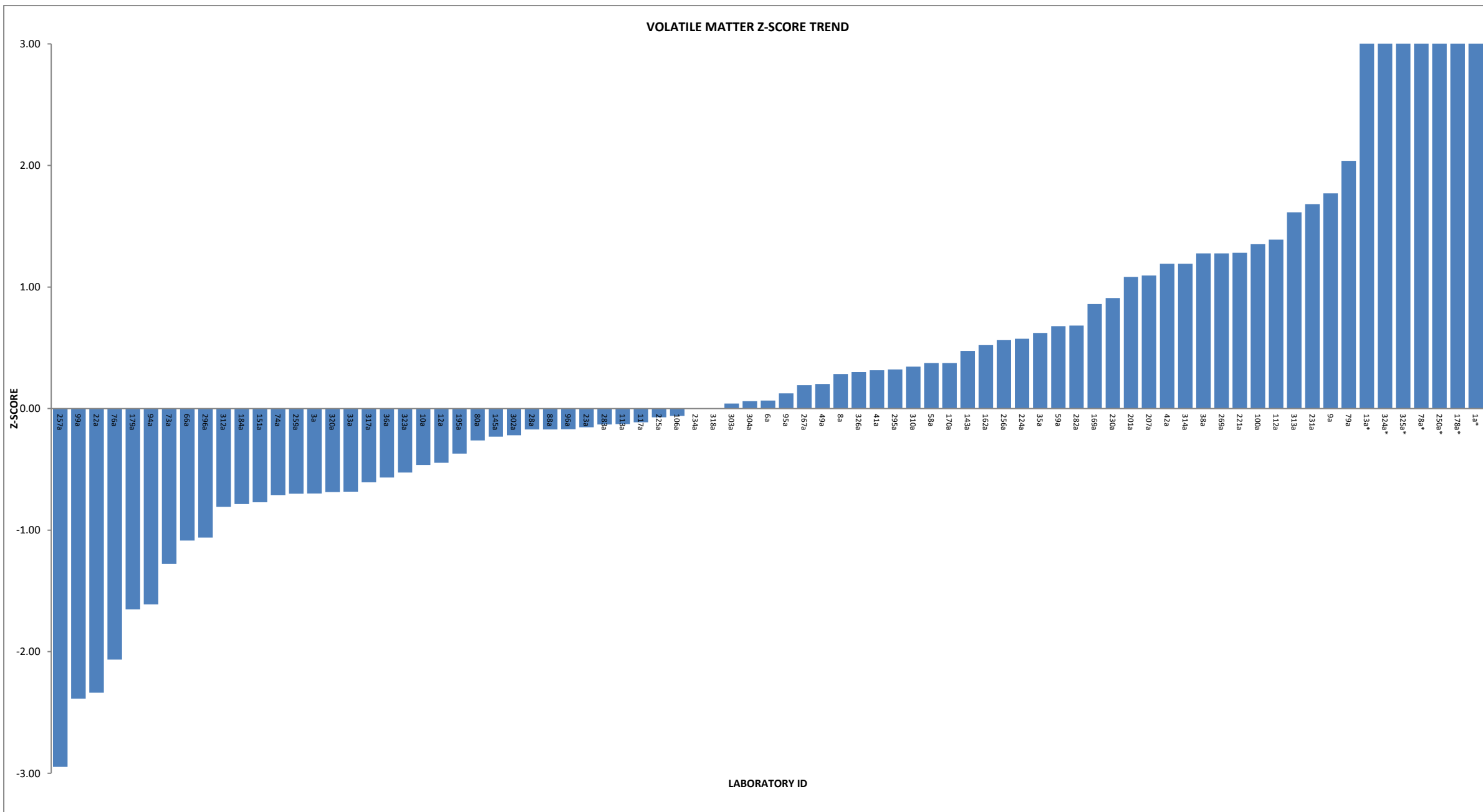
QUICK ASH Z-SCORE TREND



COAL CONCEPTS - PROFICIENCY TESTING - JANUARY 2026

ANALYTICAL PARAMETER: ISO VOLATILE MATTER (%)

LAB ID	MOISTURE IN ANALYSIS SAMPLE (%)	AIR DRY	DRY BASE	Z-SCORE (DRY BASE)
<u>1a*</u>	3,85	<u>34,23</u>	<u>35,60</u>	<u>37,19</u>
3a	5,10	20,00	21,07	-0,70
6a	6,12	20,06	21,37	0,07
8a	6,30	20,10	21,45	0,28
9a	6,00	20,70	22,02	1,77
10a	6,07	19,88	21,16	-0,46
12a	6,43	19,81	21,17	-0,45
<u>13a*</u>	5,66	<u>21,81</u>	<u>23,12</u>	<u>4,63</u>
22a	5,90	19,24	20,45	-2,34
23a	5,70	20,07	21,28	-0,15
28a	6,00	20,00	21,28	-0,17
33a	5,60	19,90	21,08	-0,68
35a	6,40	20,20	21,58	0,62
36a	5,80	19,90	21,13	-0,57
38a	6,10	20,50	21,83	1,28
41a	5,70	20,24	21,46	0,32
42a	5,50	20,60	21,80	1,19
49a	5,93	20,15	21,42	0,20
58a	5,38	20,33	21,49	0,37
59a	6,12	20,28	21,60	0,68
66a	6,72	19,52	20,93	-1,09
73a	6,15	19,57	20,85	-1,28
74a	6,50	19,70	21,07	-0,71
76a	5,60	19,40	20,55	-2,06
<u>78a*</u>	6,08	<u>22,26</u>	<u>23,70</u>	<u>6,15</u>
79a	6,66	20,65	22,12	2,04
80a	5,80	20,01	21,24	-0,26
88a	6,00	20,00	21,28	-0,17
94a	5,91	19,50	20,72	-1,61
95a	6,50	20,00	21,39	0,13
96a	6,19	19,96	21,28	-0,17
99a	6,50	19,10	20,43	-2,39
100a	5,40	20,68	21,86	1,35
106a	5,72	20,10	21,32	-0,06
112a	5,83	20,60	21,88	1,39
113a	5,98	20,02	21,29	-0,13
117a	6,10	20,00	21,30	-0,11
143a	6,06	20,22	21,52	0,47
145a	5,90	20,00	21,25	-0,23
151a	6,40	19,70	21,05	-0,77
162a	6,00	20,25	21,54	0,52
169a	5,73	20,43	21,67	0,86
170a	5,52	20,30	21,49	0,37
<u>178a*</u>	4,70	<u>30,32</u>	<u>31,82</u>	<u>27,32</u>
179a	5,84	19,50	20,71	-1,65
184a	5,90	19,80	21,04	-0,79
195a	5,71	19,99	21,20	-0,37
201a	6,70	20,30	21,76	1,08
207a	5,80	20,50	21,76	1,10
221a	6,20	20,48	21,83	1,28
224a	6,32	20,20	21,56	0,57
225a	5,70	20,10	21,31	-0,07
230a	5,49	20,50	21,69	0,91
231a	5,90	20,69	21,99	1,68
234a	6,30	20,00	21,34	0,00
<u>250a*</u>	2,63	<u>25,00</u>	<u>25,68</u>	<u>11,30</u>
256a	6,30	20,20	21,56	0,56
257a	6,00	19,00	20,21	-2,95
259a	5,57	19,90	21,07	-0,70
267a	5,96	20,14	21,42	0,19
269a	6,10	20,50	21,83	1,28
282a	6,50	20,20	21,60	0,68
284a	5,60	20,10	21,29	-0,13
295a	5,57	20,27	21,47	0,32
296a	5,71	19,74	20,94	-1,06
302a	5,92	20,00	21,26	-0,22
303a	5,89	20,10	21,36	0,04
304a	5,69	20,15	21,37	0,06
310a	6,40	20,10	21,47	0,34
312a	6,43	19,68	21,03	-0,81
313a	6,20	20,60	21,96	1,62
314a	5,50	20,60	21,80	1,19
317a	5,73	19,90	21,11	-0,61
318a	5,80	20,10	21,34	0,00
320a	4,93	20,04	21,08	-0,69
323a	5,87	19,90	21,14	-0,53
<u>324a*</u>	5,87	<u>21,95</u>	<u>23,32</u>	<u>5,16</u>
<u>325a*</u>	3,60	<u>22,57</u>	<u>23,41</u>	<u>5,40</u>
326a	6,00	20,17	21,46	0,30
NUMBER OF RESULTS	-	79	79	-
OUTLIERS	-	7	7	-
AVERAGE	-	5,84	20,07	21,34
STD DEVIATION	-	-	0,36	0,38
MEDIAN	-	-	20,10	21,34
%RSD	-	-	1,82	1,80
ROBUST AVERAGE	-	-	20,08	21,35
ROBUST STD DEVIATION	-	-	0,40	0,41
UoM	-	-	0,06	0,06

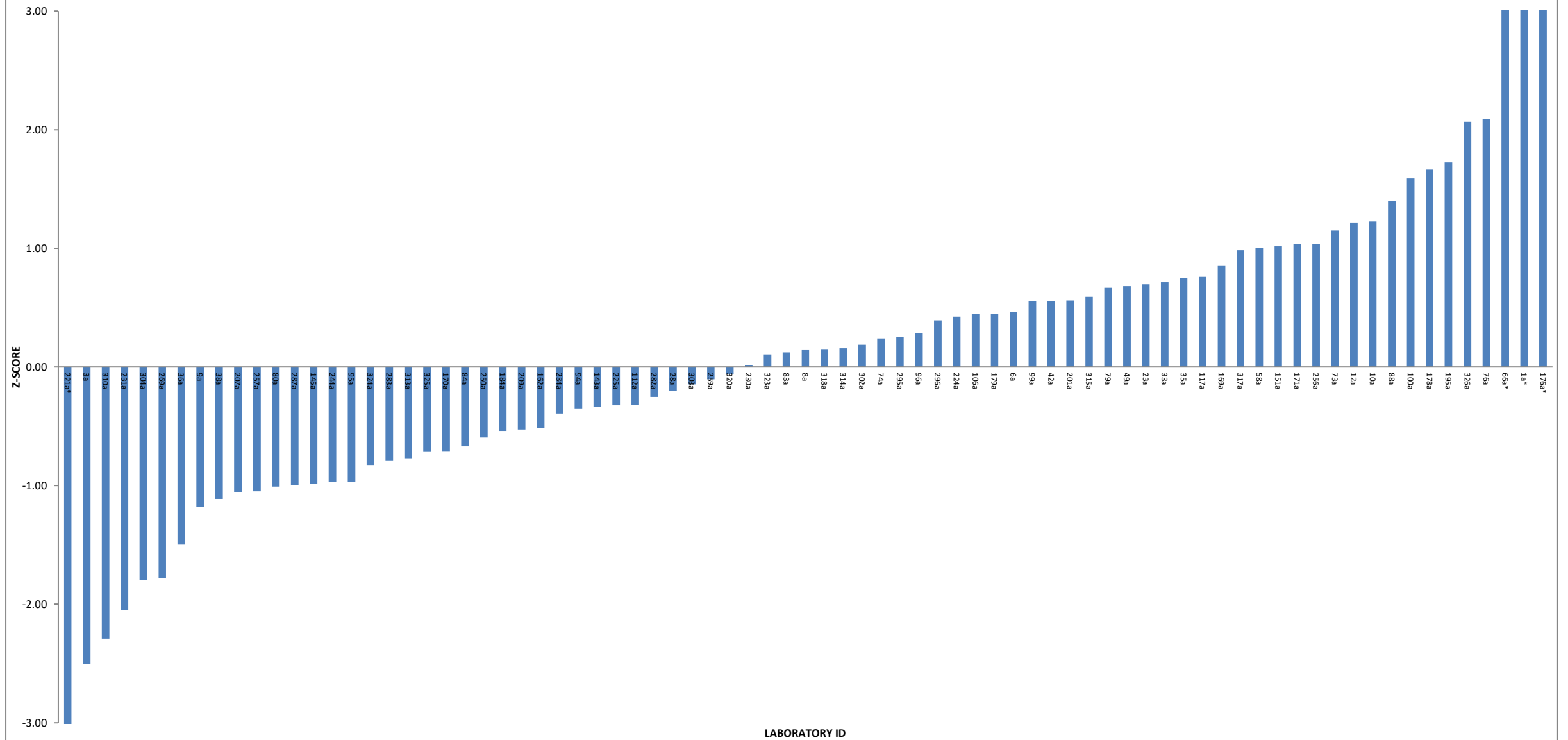


COAL CONCEPTS - PROFICIENCY TESTING - JANUARY 2026

ANALYTICAL PARAMETER: CALORIFIC VALUE (MJ/kg)

LAB ID	MOISTURE IN ANALYSIS SAMPLE (%)	AIR DRY (MJ/kg)	DRY BASE (MJ/kg)	Z-SCORE (DRY BASE)
<u>1a*</u>	3,85	<u>27,87</u>	<u>28,99</u>	<u>55,10</u>
3a	5,10	14,44	15,22	-2,50
6a	6,12	14,95	15,92	0,46
8a	6,30	14,85	15,85	0,14
9a	6,00	14,60	15,53	-1,18
10a	6,07	15,13	16,11	1,23
12a	6,43	15,07	16,11	1,22
23a	5,70	15,07	15,98	0,70
28a	6,00	14,82	15,77	-0,20
33a	5,60	15,09	15,99	0,71
35a	6,40	14,97	15,99	0,75
36a	5,80	14,56	15,46	-1,50
38a	6,10	14,60	15,55	-1,11
42a	5,50	15,07	15,95	0,56
49a	5,93	15,03	15,98	0,68
58a	5,38	15,19	16,05	1,00
<u>66a*</u>	6,72	<u>23,35</u>	<u>25,03</u>	<u>38,56</u>
73a	6,15	15,10	16,09	1,15
74a	6,50	14,84	15,87	0,24
76a	5,60	15,40	16,31	2,09
79a	6,66	14,91	15,97	0,67
80a	5,80	14,67	15,57	-1,01
83a	5,64	14,95	15,84	0,12
84a	5,65	14,77	15,65	-0,67
88a	6,00	15,18	16,15	1,40
94a	5,91	14,80	15,73	-0,35
95a	6,50	14,57	15,58	-0,97
96a	6,19	14,90	15,88	0,29
99a	6,50	14,91	15,95	0,55
100a	5,40	15,32	16,19	1,59
106a	5,72	15,01	15,92	0,44
112a	5,83	14,82	15,74	-0,32
117a	6,10	15,02	16,00	0,76
143a	6,06	14,78	15,73	-0,34
145a	5,90	14,66	15,58	-0,98
151a	6,40	15,03	16,06	1,02
162a	6,00	14,75	15,69	-0,51
169a	5,73	15,10	16,02	0,85
170a	5,52	14,78	15,64	-0,71
171a	4,12	15,40	16,06	1,03
<u>176a*</u>	5,79	<u>29,54</u>	<u>31,36</u>	<u>65,01</u>
178a	4,70	15,45	16,21	1,66
179a	5,79	15,00	15,92	0,45
184a	5,90	14,76	15,69	-0,54
195a	5,71	15,30	16,23	1,72
201a	6,70	14,88	15,95	0,56
207a	5,80	14,66	15,56	-1,05
209a	5,79	14,78	15,69	-0,53
<u>221a*</u>	6,20	<u>14,02</u>	<u>14,95</u>	<u>-3,63</u>
224a	6,32	14,91	15,92	0,42
225a	5,70	14,84	15,74	-0,32
230a	5,49	14,95	15,82	0,02
231a	5,90	14,42	15,32	-2,05
234a	6,30	14,73	15,72	-0,39
244a	5,79	14,68	15,58	-0,97
250a	2,63	15,26	15,67	-0,59
256a	6,30	15,05	16,06	1,04
257a	6,00	14,63	15,56	-1,05
259a	5,57	14,91	15,79	-0,10
269a	6,10	14,45	15,39	-1,78
282a	6,50	14,73	15,75	-0,25
284a	5,60	14,75	15,63	-0,79
287a	5,95	14,65	15,58	-0,99
295a	5,57	14,99	15,87	0,25
296a	5,71	15,00	15,91	0,39
302a	5,92	14,92	15,86	0,19
303a	5,89	14,85	15,78	-0,15
304a	5,69	14,51	15,39	-1,79
310a	6,40	14,29	15,27	-2,29
313a	6,20	14,66	15,63	-0,78
314a	5,50	14,98	15,85	0,16
315a	5,30	15,11	15,96	0,59
317a	5,73	15,13	16,05	0,98
318a	5,80	14,93	15,85	0,15
320a	4,93	15,02	15,80	-0,06
323a	5,87	14,91	15,84	0,11
324a	5,87	14,70	15,62	-0,83
325a	3,60	15,08	15,64	-0,72
326a	6,00	15,33	16,31	2,07
NUMBER OF RESULTS	-	79	79	-
OUTLIERS	-	-	4	-
AVERAGE	-	5,79	14,90	15,81
STD DEVIATION	-	-	0,24	0,24
MEDIAN	-	-	14,91	15,84
%RSD	-	-	1,63	1,51
ROBUST AVERAGE	-	-	14,90	15,82
ROBUST STD DEVIATION	-	-	0,27	0,26
UoM	-	-	0,04	0,04

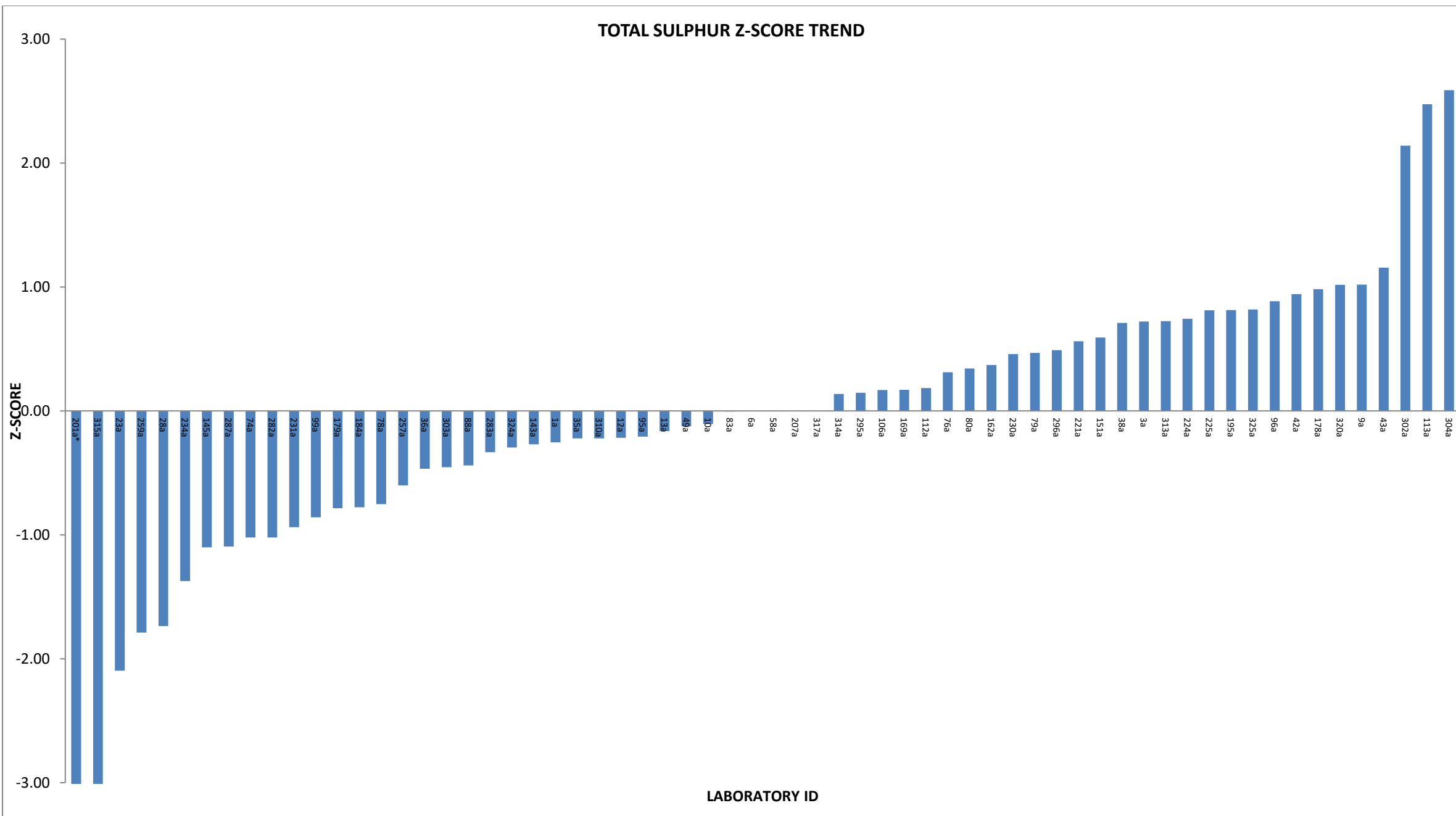
CALORIFIC VALUE Z-SCORE TREND



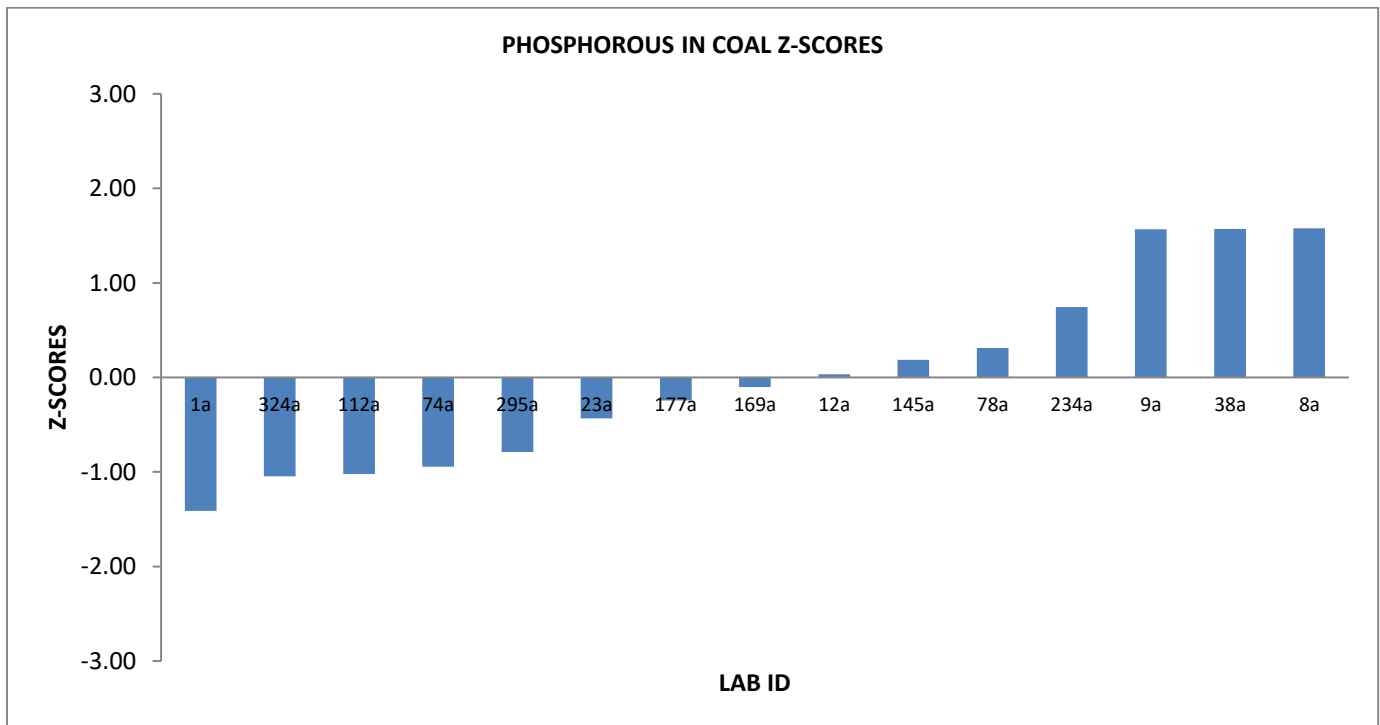
COAL CONCEPTS - PROFICIENCY TESTING - JANUARY 2026

ANALYTICAL PARAMETER: TOTAL SULPHUR (%)

LAB ID	MOISTURE IN ANALYSIS SAMPLE (%)	AIR DRY	DRY BASE	Z-SCORE (DRY BASE)
1a	3,85	0,83	0,86	-0,25
3a	5,10	0,88	0,93	0,72
6a	6,12	0,83	0,88	0,00
9a	6,00	0,89	0,95	1,02
10a	6,07	0,82	0,87	-0,11
12a	6,43	0,81	0,87	-0,22
13a	5,66	0,82	0,87	-0,16
23a	5,70	0,70	0,74	-2,10
28a	6,00	0,72	0,77	-1,74
35a	6,40	0,81	0,87	-0,22
36a	5,80	0,80	0,85	-0,47
38a	6,10	0,87	0,93	0,71
42a	5,50	0,89	0,94	0,94
43a	5,84	0,90	0,96	1,16
49a	5,93	0,82	0,87	-0,13
58a	5,38	0,83	0,88	0,00
74a	6,50	0,76	0,81	-1,02
76a	5,60	0,85	0,90	0,31
78a	6,08	0,78	0,83	-0,75
79a	6,66	0,85	0,91	0,47
80a	5,80	0,85	0,90	0,34
83a	5,64	0,83	0,88	0,00
88a	6,00	0,80	0,85	-0,44
95a	6,50	0,81	0,87	-0,21
96a	6,19	0,88	0,94	0,89
99a	6,50	0,77	0,82	-0,86
106a	5,72	0,84	0,89	0,17
112a	5,83	0,84	0,89	0,18
113a	5,98	0,98	1,04	2,47
143a	6,06	0,81	0,86	-0,27
145a	5,90	0,76	0,81	-1,10
151a	6,40	0,86	0,92	0,59
162a	6,00	0,85	0,90	0,37
169a	5,73	0,84	0,89	0,17
178a	4,70	0,90	0,94	0,98
179a	5,84	0,78	0,83	-0,79
184a	5,90	0,78	0,83	-0,78
195a	5,71	0,88	0,93	0,81
<u>201a*</u>	6,70	<u>0,51</u>	<u>0,55</u>	<u>-5,08</u>
207a	5,80	0,83	0,88	0,00
221a	6,20	0,86	0,92	0,56
224a	6,32	0,87	0,93	0,74
225a	5,70	0,88	0,93	0,81
230a	5,49	0,86	0,91	0,46
231a	5,90	0,77	0,82	-0,94
234a	6,30	0,74	0,79	-1,37
257a	6,00	0,79	0,84	-0,60
259a	5,57	0,72	0,76	-1,79
282a	6,50	0,76	0,81	-1,02
284a	5,60	0,81	0,86	-0,33
287a	5,95	0,76	0,81	-1,09
295a	5,57	0,84	0,89	0,15
296a	5,71	0,86	0,91	0,49
302a	5,92	0,96	1,02	2,14
303a	5,89	0,80	0,85	-0,45
304a	5,69	0,99	1,05	2,59
310a	6,40	0,81	0,87	-0,22
313a	6,20	0,87	0,93	0,72
314a	5,50	0,84	0,89	0,14
315a	5,30	0,63	0,67	-3,27
317a	5,73	0,83	0,88	0,00
320a	4,93	0,90	0,95	1,02
324a	5,87	0,81	0,86	-0,30
325a	3,60	0,90	0,93	0,82
NUMBER OF RESULTS	64	64	64	-
OUTLIERS	-	1	1	-
AVERAGE	5,84	0,83	0,88	-
MEDIAN	-	0,83	0,88	-
STD DEVIATION	-	0,06	0,07	-
%RSD	-	7,56	7,46	-
ROBUST AVERAGE	-	0,83	0,88	-
ROBUST STD DEVIATION	-	0,06	0,07	-
UoM	-	0,01	0,01	-



COAL CONCEPTS - PROFICIENCY TESTING - JANUARY 2026					
ANALYTICAL PARAMETER: PHOSPHOROUS IN COAL (%)					
	LAB ID	MOISTURE IN ANALYSIS SAMPLE (%)	AIR DRY	DRY BASE	Z-SCORE (DRY BASE)
	1a	3,85	0,025	0,026	-1.41
	8a	6,30	0,150	0,160	1,58
	9a	6,00	0,150	0,160	1,57
	12a	6,43	0,085	0,091	0,03
	23a	5,70	0,066	0,070	-0,43
	38a	6,10	0,150	0,160	1,57
	74a	6,50	0,044	0,047	-0,94
	78a	6,08	0,097	0,103	0,31
	112a	5,83	0,041	0,044	-1,02
	145a	5,90	0,092	0,098	0,19
	169a	5,73	0,080	0,085	-0,10
	177a	4,34	0,075	0,078	-0,24
	234a	6,30	0,115	0,123	0,74
	295a	5,57	0,051	0,054	-0,79
	324a	5,87	0,040	0,042	-1,05
Number of results	-	15	15	15	-
OUTLIERS	-	-	0	0	-
AVERAGE	-	5,77	0,084	0,089	-
STD DEVIATION	-	-	0,042	0,045	-
MEDIAN	-	-	0,080	0,085	-
ROBUST AVERAGE	-	-	0,084	0,089	-
ROBUST STD DEVIATION	-	-	0,052	0,055	-
UoM	-	-	0,017	0,018	-



COAL CONCEPTS - PROFICIENCY TESTING - JANUARY 2026					
ANALYTICAL PARAMETER: TOTAL CARBON (%)					
	LAB ID	MOISTURE IN ANALYSIS SAMPLE (%)	AIR DRY	DRY BASE	Z-SCORE (DRY BASE)
	1a	3,85	40,74	42,37	-0,80
	12a	6,43	39,73	42,46	-0,74
	42a	5,50	40,37	42,72	-0,57
	79a	6,66	42,94	46,00	1,57
	88a	6,00	39,20	41,70	-1,23
	177a	4,34	41,10	42,96	-0,41
	224a	6,32	41,62	44,43	0,54
	234a	6,30	42,66	45,53	1,26
	295a	5,57	40,81	43,22	-0,25
	324a	5,87	39,98	42,47	-0,73
	325a	3,60	44,05	45,70	1,37
Number of results	-	11	11	11	-
OUTLIERS	-	-	0	0	-
AVERAGE	-	5,49	41,20	43,60	-
MEDIAN	-	-	40,81	42,96	-
STD DEVIATION	-	-	1,49	1,54	-
%RSD	-	-	3,61	3,52	-
ROBUST AVERAGE	-	-	-	-	-
ROBUST STD DEVIATION	-	-	-	-	-
UoM	-	-	-	-	-

COAL CONCEPTS - PROFICIENCY TESTING - JANUARY 2026					
ANALYTICAL PARAMETER: HYDROGEN (%)					
	LAB ID	MOISTURE IN ANALYSIS SAMPLE (%)	AIR DRY	DRY BASE	Z-SCORE (DRY BASE)
	1a	3,85	2,56	2,66	0,30
	12a	6,43	2,56	2,74	0,66
	42a	5,50	2,40	2,54	-0,29
	79a	6,66	2,65	2,84	1,16
	88a	6,00	2,69	2,86	1,27
	177a	4,34	2,42	2,53	-0,34
	224a	6,32	2,41	2,57	-0,14
	<u>234a*</u>	6,30	3,20	<u>3,42</u>	<u>3,96</u>
	295a	5,57	2,47	2,62	0,07
	312a	6,43	2,35	2,51	-0,43
	324a	5,87	2,01	2,14	-2,26
Number of results	-	11	11	11	-
OUTLIERS	-	-	0	1	-
AVERAGE	-	5,75	2,52	2,60	-
MEDIAN	-	-	2,47	2,59	-
STD DEVIATION	-	-	0,29	0,21	-
%RSD	-	-	11,50	7,92	-
ROBUST AVERAGE	-	-	-	-	-
ROBUST STD DEVIATION	-	-	-	-	-
UoM	-	-	-	-	-

COAL CONCEPTS - PROFICIENCY TESTING - JANUARY 2026					
ANALYTICAL PARAMETER: NITROGEN (%)					
	LAB ID	MOISTURE IN ANALYSIS SAMPLE (%)	AIR DRY	DRY BASE	Z-SCORE (DRY BASE)
	1a	3,85	0,93	0,97	-0,42
	12a	6,43	0,95	1,02	-0,21
	42a	5,50	1,02	1,08	0,08
	79a	6,66	0,58	0,62	-1,97
	88a	6,00	1,46	1,55	2,20
	177a	4,34	1,01	1,06	0,00
	224a	6,32	1,02	1,09	0,12
	295a	5,57	0,99	1,05	-0,06
	312a	6,43	1,03	1,10	0,18
	324a	5,87	1,02	1,08	0,10
Number of results	-	10	10	10	-
OUTLIERS	-	-	0	0	-
AVERAGE	-	5,70	1,00	1,06	-
MEDIAN	-	-	1,02	1,07	-
STD DEVIATION	-	-	0,21	0,22	-
%RSD	-	-	21,00	21,06	-
ROBUST AVERAGE	-	-	1,00	1,05	-
ROBUST STD DEVIATION	-	-	0,06	0,07	-
UoM	-	-	0,02	0,03	-

COAL CONCEPTS - PROFICIENCY TESTING - JANUARY 2026				
ANALYTICAL PARAMETER: ASH FUSION TEMPERATURES (oC)				
LAB ID	DEFORMATION	SOFTENING	HEMISPHERE	FLOW
<u>1a*</u>	<u>1280</u>	<u>1290</u>	<u>1310</u>	<u>1350</u>
9a	1460	1470	1480	1500
10a	1380	1410	1440	1470
23a	1390	1440	1480	1500
28a	1430	1460	1490	1500
38a	1440	1460	1480	1500
42a	1420	1450	1470	1490
49a	1410	1440	1470	1500
80a	1470	1480	1500	1500
88a	1390	1420	1450	1500
95a	1420	1440	1460	1480
99a	1481	1500	1500	1500
106a	1470	1480	1500	1500
112a	1380	1450	1480	1495
145a	1480	1500	1500	1500
151a	1500	1500	1500	1500
224a	1393	1408	1433	1475
234a	1450	1470	1490	1500
295a	1450	1470	1490	1500
317a	1500	1500	1500	1500
324a	1438	1492	1500	1500
Number of results	21	21	21	21
Outliers	1	1	1	1
AVERAGE	1438	1462	1481	1496
MEDIAN	1439	1465	1485	1500
STDEV	39	30	21	9

Z-SCORES				
LAB ID	DEFORMATION	SOFTENING	HEMISPHERE	FLOW
<u>1a*</u>	<u>-4,04</u>	<u>-5,81</u>	<u>-8,12</u>	<u>-15,64</u>
9a	0,57	0,27	-0,03	0,48
10a	-1,47	-1,76	-1,93	-2,74
23a	-1,22	-0,74	-0,03	0,48
28a	-0,19	-0,07	0,44	0,48
38a	0,06	-0,07	-0,03	0,48
42a	-0,45	-0,41	-0,51	-0,59
49a	-0,71	-0,74	-0,51	0,48
80a	0,83	0,61	0,92	0,48
88a	-1,22	-1,42	-1,46	0,48
95a	-0,45	-0,74	-0,98	-1,67
99a	1,11	1,28	0,92	0,48
106a	0,83	0,61	0,92	0,48
112a	-1,47	-0,41	-0,03	-0,05
145a	1,09	1,28	0,92	0,48
151a	1,60	1,28	0,92	0,48
224a	-1,14	-1,82	-2,27	-2,20
234a	0,32	0,27	0,44	0,48
295a	0,32	0,27	0,44	0,48
317a	1,60	1,28	0,92	0,48
324a	0,00	1,01	0,92	0,48

COAL CONCEPTS - PROFICIENCY TESTING -JANUARY 2026					
ANALYTICAL PARAMETER: CHLORINE (ppm)					
	LAB ID	MOISTURE IN ANALYSIS SAMPLE (%)	AIR DRY	DRY BASE	Z-SCORE (DRY BASE)
	1a	3,85	120	125	-
	12a	6,43	200	214	-
	177a	4,34	150	157	-
	324a	5,87	175	186	-
Number of results	-	4	4	4	-
OUTLIERS	-	-	-	-	-
AVERAGE	-	5,12	161	170	-
STD DEVIATION	-	-	-	-	-
MEDIAN	-	-	-	-	-

COAL CONCEPTS - PROFICIENCY TESTING -JANUARY 2026					
ANALYTICAL PARAMETER: FLUORINE (ppm)					
	LAB ID	MOISTURE IN ANALYSIS SAMPLE (%)	AIR DRY	DRY BASE	Z-SCORE (DRY BASE)
	1a	3,85	88	92	-0,79
	12a	6,43	99	106	-0,52
	169a	5,73	185	196	1,21
	177a	4,34	175	183	0,96
	324a	5,87	83	88	-0,86
Number of results	-	5	5	5	-
OUTLIERS	-	-	0	0	-
AVERAGE	-	5,24	126	133	-
STD DEVIATION	-	-	50	52	-
MEDIAN	-	-	99	106	-

COAL CONCEPTS - PROFICIENCY TESTING -JANUARY 2026					
ANALYTICAL PARAMETER: ASTM ASH (%)					
	LAB ID	MOISTURE IN ANALYSIS SAMPLE (%)	AIR DRY (%)	DRY BASE (%)	Z-SCORE (DRY BASE)
	<u>1a*</u>	3,85	<u>11,95</u>	<u>12,43</u>	<u>-479,55</u>
	12a	6,43	40,35	43,12	-1,01
	224a	6,32	40,46	43,19	0,00
	312a	6,43	40,47	43,25	0,99
Number of results	-	4	4	4	-
OUTLIERS	-	-	1	1	-
AVERAGE	-	5,76	40,43	43,19	-
STD DEVIATION	-	-	0,07	0,06	-
MEDIAN	-	-	40,46	43,19	-
%RSD	-	-	0,16	0,15	-

COAL CONCEPTS - PROFICIENCY TESTING -JANUARY 2026					
ANALYTICAL PARAMETER: ASTM VOLS (%)					
	LAB ID	MOISTURE IN ANALYSIS SAMPLE (%)	AIR DRY (%)	DRY BASE (%)	Z-SCORE (DRY BASE)
	<u>1a</u>	3,85	<u>34,28</u>	<u>35,65</u>	<u>33,93</u>
	12a	6,43	20,83	22,26	0,98
	224a	6,32	20,50	21,88	0,05
	312a	6,43	20,07	21,45	-1,02
Number of results	-	4	4	4	-
OUTLIERS	-	-	1	1	-
AVERAGE	-	5,76	20,47	21,86	-
STD DEVIATION	-	-	0,38	0,41	-
MEDIAN	-	-	20,50	21,88	-
%RSD	-	-	1,86	1,86	-

GENERAL CONCLUSIONS

1. The ISO Ash z-score trend is evenly distributed. The Robust average, Average and Median are similar. Two outliers were detected.
2. The overall ISO volatile trend is evenly distributed. Seven outliers were detected. These were due to analytical errors. An RSD of 1.80% indicated a high precision of results received.
3. Calorific value trend is evenly distributed. Four outliers were detected. These seemed to be due to calibration errors. The Average, Median and Robust Average are the similar.
4. The sulphur z-score trend is evenly distributed. One outlier was detected. The Average, Median and Robust Average are the same. A low precision of results received.
5. The phosphorous analysis results show a wide scatter, indicating significant data variability. No outliers were detected.
6. Generally acceptable results were obtained on Carbon, Hydrogen and Nitrogen. One Outlier was detected on hydrogen.
7. Ash fusion: Generally acceptable results. One outlier was detected on Def, Soft, Hemi & Flow.

COAL CONCEPTS: Terms and Conditions

Return of results:

Laboratories participate in proficiency testing programs on the understanding that they will be sharing their results and information **anonymously** with other laboratories performing the same analysis. No return of results compromises the spirit of the programs, and reports will not be sent to laboratories unless they return results. Payment in full is required from all laboratories enrolling whether they return results or not.

Errors in Participant Proficiency Testing Results:

Proficiency testing reports should reflect the level of accuracy that a regular testing client would receive.

If a participant finds an error in their proficiency testing results, they may notify us in writing and change their submission **PRIOR** to the due date for return. Changes after this time will not be accepted.

Coal Concepts' reports result *as submitted* by participants.

On occasion, it seems as though participants have mixed up the samples or not processed the samples according to the instructions. Coal Concepts cannot make assumptions of this nature and change results 'to suit'. We also cannot compromise the integrity of the programs by suggesting to some participants that they should review their results prior to the due date. (This is unfair to other participants) It is the responsibility of the participants to check all aspects of the program, including sample identification, preparation, testing instructions, calculations and reporting of the results prior to results submission.

If samples are not in good condition on arrival to the participant laboratory, Coal Concepts must be notified in writing IMMEDIATELY, as often samples can be replaced in good time. Claims about samples received in bad condition will not be accepted after the report has been issued.

Late Enrolments and Late Results:

Late enrolment requests cannot always be accommodated, as sample manufacture must be scheduled well in advance to the shipping date of the program to allow all necessary quality assurance activities to be carried out.

Shipping of PT materials and evaluating test results from PTPs out of cycle with the mainstream programs is considerably time consuming and therefore costly.

In order not to disadvantage participants able to comply with time frames, Coal Concepts may charge a late fee in the following circumstances:

Requests that Coal concepts staff enters results on behalf of participants.

Requests to record results after the due date.

Requests for PTP participation that is out of cycle with the scheduled dates.

Shipping fees and Customs clearance:

Costs incurred for shipping samples and clearance of same through customs are the responsibility of the participating laboratory unless otherwise indicated.

Non-payment of fees:

Coal Concepts retains the right to withhold reports and/or test materials and services when invoices are outstanding.

Confidentiality of results:

All data and information received by Coal Concepts from its clients are considered confidential unless the client has given express permission to pass on information.

Definitions:

The dictionary definitions of "collusion" and "falsification" are as follows.

· *Collusion*: A secret agreement or cooperation for a fraudulent or deceitful purpose.

· *Falsification*: Deliberately changing something to be false. In proficiency testing terms, collusion is comparing data (and perhaps changing data) to fit in with a believed "correct" result. This is contrary to the spirit of proficiency testing programs, which are issued with the intention of providing an objective comparison of a laboratory's performance with others. Coal Concepts tries to minimise the occurrence of collusion by being aware that laboratories should be objective when they report their results and should therefore not know the intended results at the time, they are reporting to us.

Answers are not provided to clients until results have been submitted.

To prevent collusion and falsification our advice to clients is:

DON'T confer with others about PT samples or results.

DO accept the fact that everyone makes errors.

DON'T average the results or opinions of every person in the laboratory before selecting the answer to be submitted. Instead, use one of the answers AS SUBMITTED to you and take advantage of the Coal Concepts internal QA services and submit all answers generated by the technicians.

DO have confidence in your own results.

Proficiency Testing (PT) is a compulsory part of laboratory accreditation, but it is also an important tool for giving you confidence in your results. "Enhancing" your PT results with assistance from another participant cannot increase confidence in your laboratory's performance.

Coal concepts' testing staff are not told what the expected results are, nor what we are expecting.

We subject ALL results to analysis, even if they are different.

The staff have the right to check that the results we enter on their behalf are correctly transcribed.

Clients are always welcome to contact Coal Concepts to seek advice or information about collusion or falsification of data.

Policy for Participant Appeal of PT Performance Assessment:

If participants disagree with their performance assessment in a proficiency report, they should inform Coal Concepts in writing.

The response will include Coal Concepts interpretation of the outcome of the reassessment and an explanation of that outcome.

(For example, explanation of a calculation, or the rationale for the outcome of the evaluation.)

If a mistake has been made by Coal Concepts, it will be dealt with via Coal Concepts' non-conformance system.

Liability

In no event shall a party's liability to the other party for direct damages exceed an amount equal to the value of the amount for the PT Programme, under that specific month.

End of report