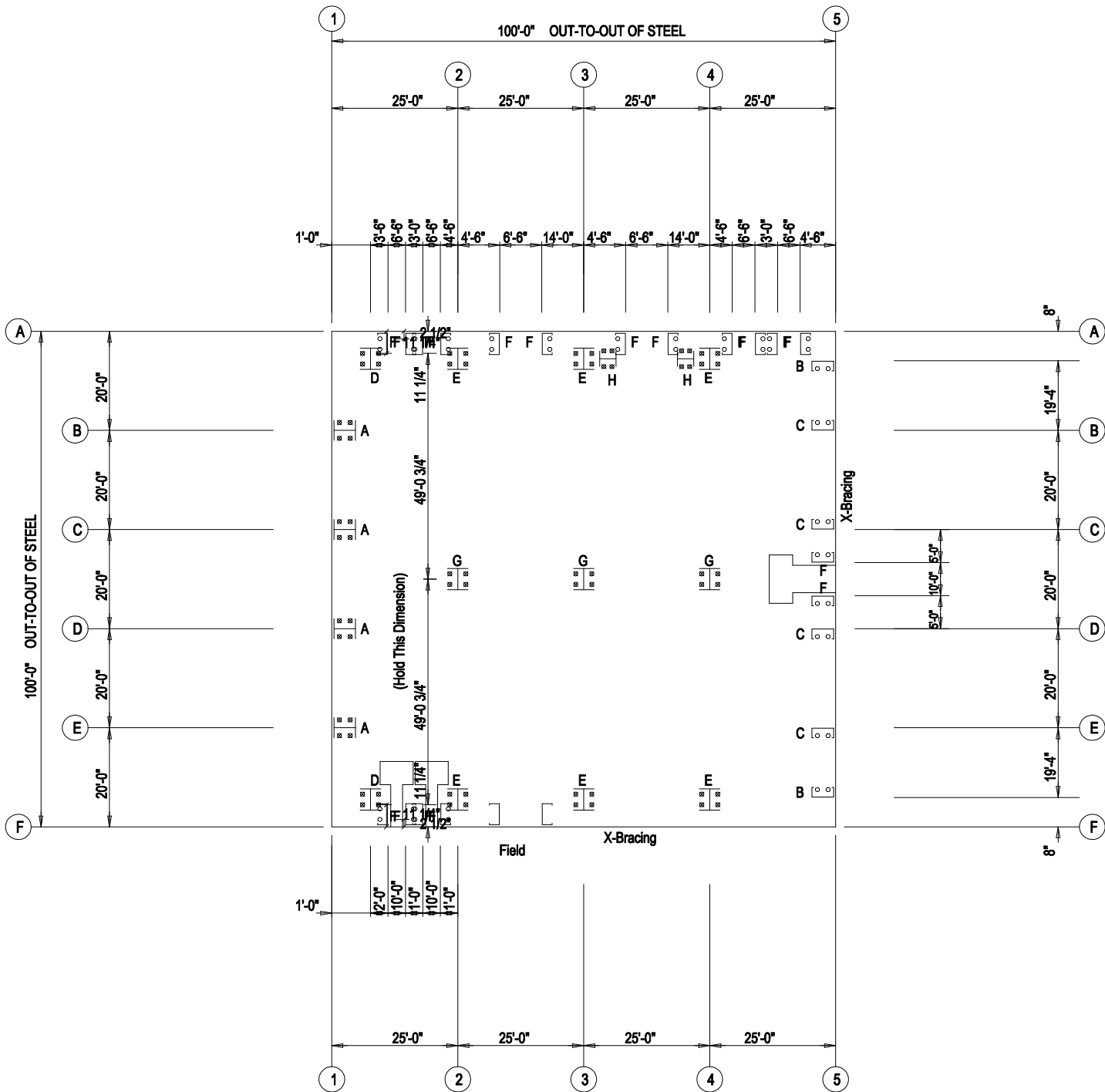


**Olympia Steel Buildings**

○ Dia= 5/8"

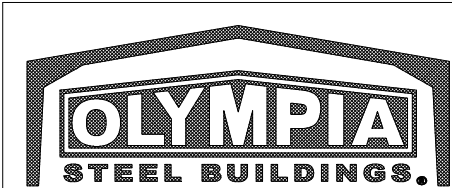
⊗ Dia= 3/4"



ANCHOR BOLT PLAN  
NOTE: All Base Plates @ 100'-0" (U.N.)


IMPORTANT!  
Do Not Set Anchor Rods with these Preliminary Drawings.

The building manufacturer will not be responsible for the location of the anchor rods on the Preliminary Drawings.



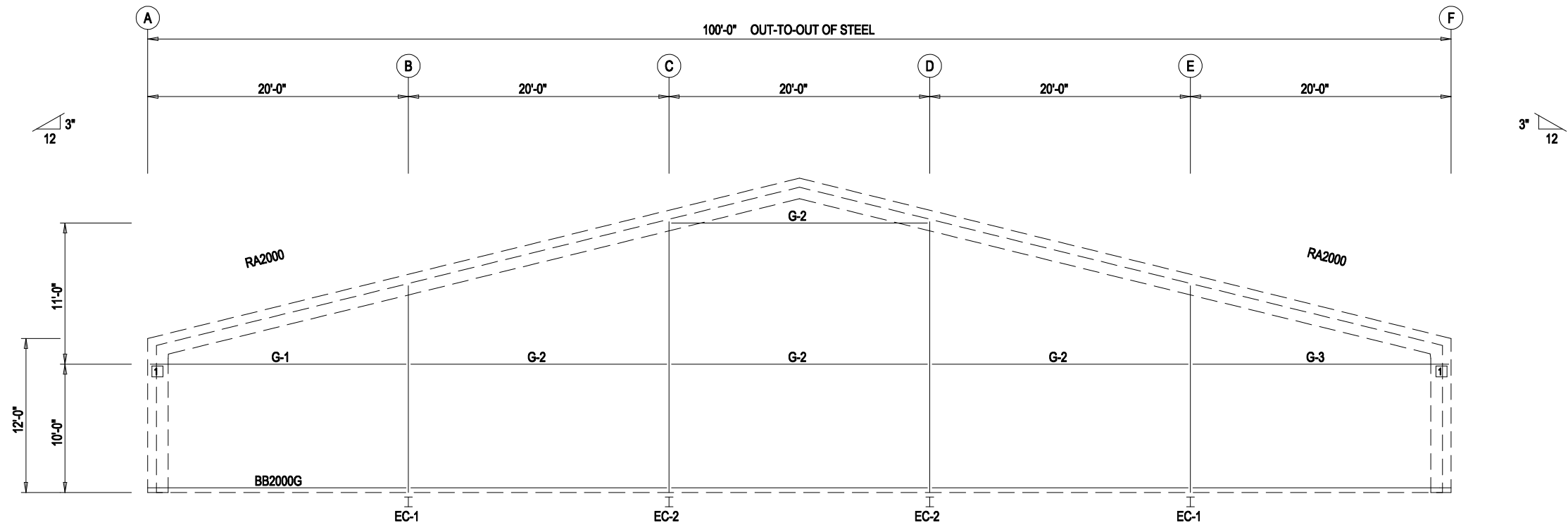
REV	DATE	DESCRIPTION	BY	CHK	DESC: ANCHOR BOLT PLAN				BLDG. SIZE: 100'-0" x 100'-0" x 12'-0"	
					CUSTOMER: Olympia Steel Buildings				LOCATION: McKees Rocks, PA 15136	
					REFERENCE: Project					
					JOBSITE: City, State Zip				COUNTY: County	
					DWN:	CHK:	DATE: 12/29/23	ENG:	JOB NO: Renee_Sides	ISSUE

The Engineer whose seal and signature appear on these documents represent Whirlwind Steel Buildings, Inc., and is not the Engineer of Record for the overall project. The Engineer's responsibility is limited to material designed and manufactured by Whirlwind Steel Buildings, Inc.

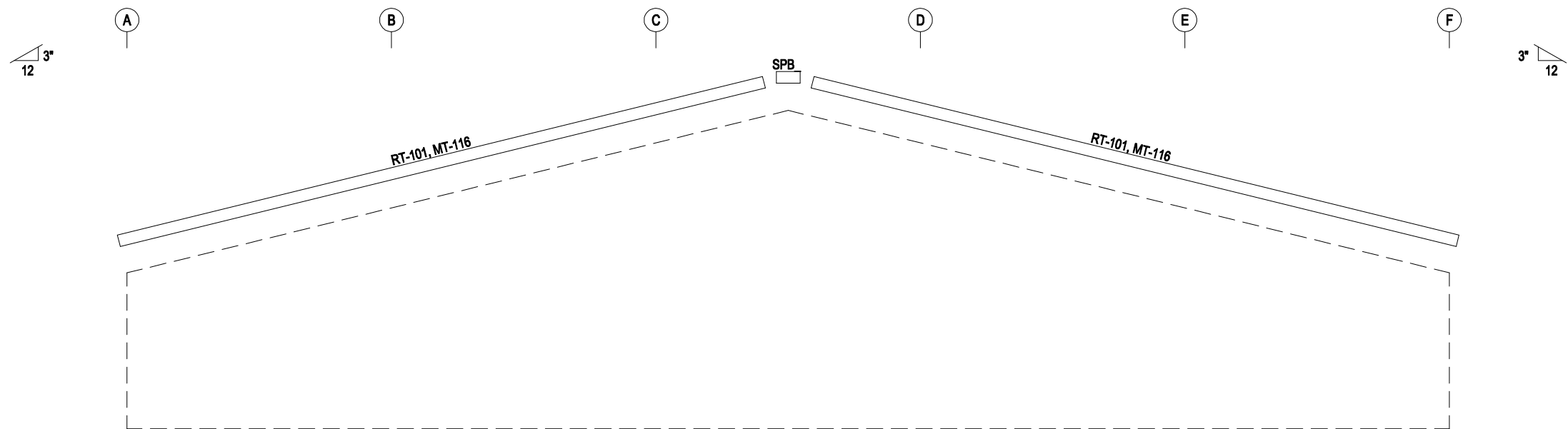


REV	DATE	DESCRIPTION	BY	CHK	DESG: user name				BLDG. SIZE: 100'-0" x 100'-0" x 12'-0"			
					CUSTOMER: Olympia Steel Buildings						LOCATION: McKees Rocks, PA 15136	
					REFERENCE: Project							
					JOBSITE: City, State Zip					COUNTY: County		
					DWN:	CHK:	DATE: 12/29/23	ENG:	JOB NO: Renee_Sides	DWG NO:	ISSUE	



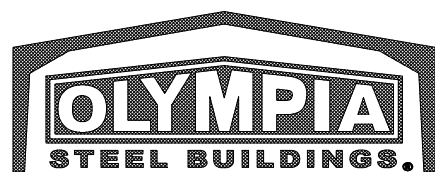


ENDWALL FRAMING: FRAME LINE 1

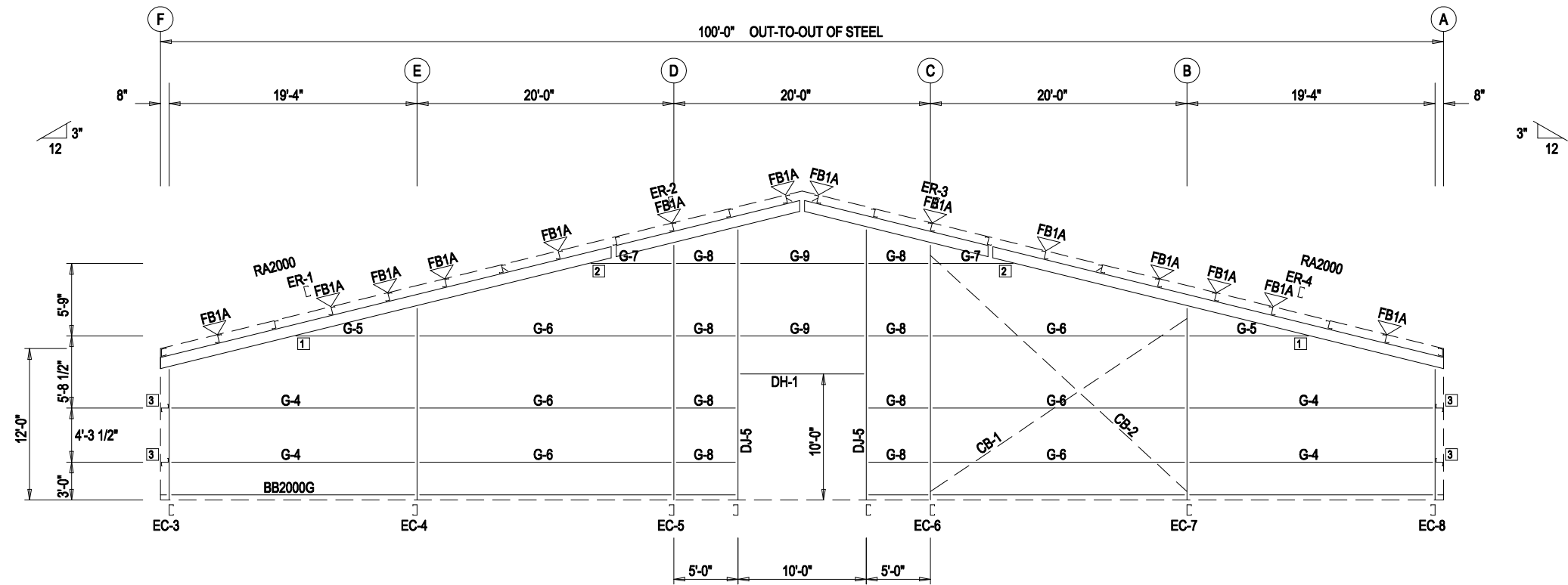


ENDWALL SHEETING & TRIM: FRAME LINE 1

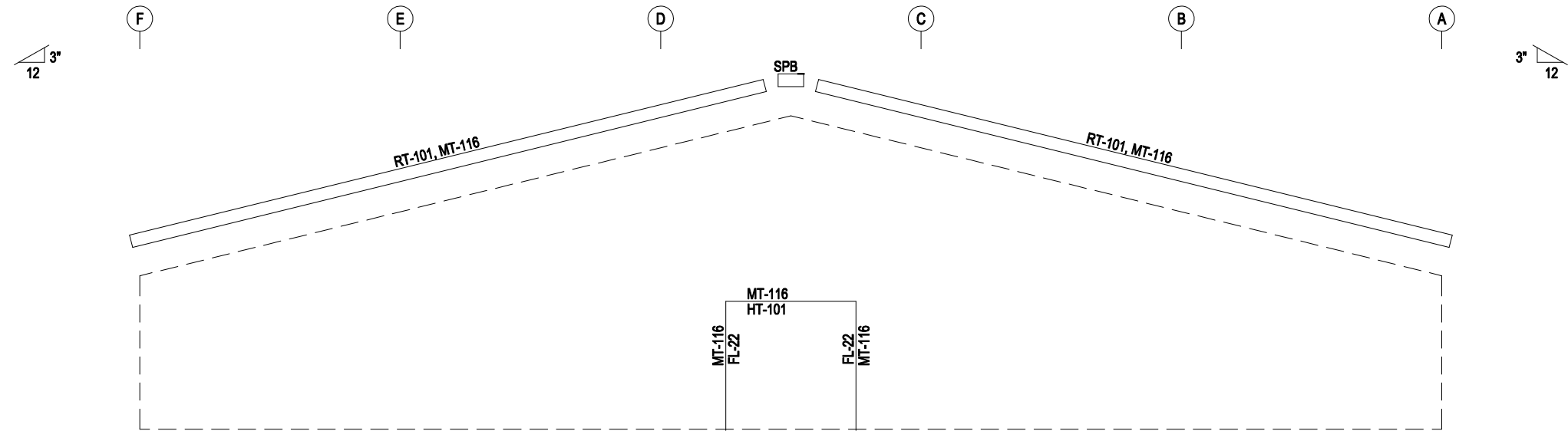
The Engineer whose seal and signature appear on these documents represent Whirlwind Steel Buildings, Inc., and is not the Engineer of Record for the overall project. The Engineer's responsibility is limited to material designed and manufactured by Whirlwind Steel Buildings, Inc.



REV	DATE	DESCRIPTION	BY	CHK	DESC:	BLDG. SIZE:
					ENDWALL FRAMING	100'-0" x 100'-0" x 12'-0"
					CUSTOMER:	LOCATION:
					Olympia Steel Buildings	McKees Rocks, PA 15136
					REFERENCE:	
					Project	
					JOB SITE:	COUNTY:
					City, State Zip	County
					DWN:	CHK:
					12/29/23	ENG:
					JOB NO:	DWG NO:
					Renee_Sides	ISSUE

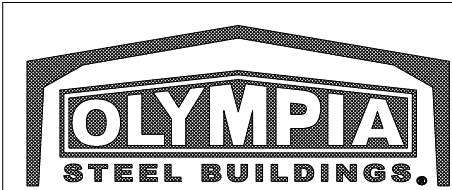


ENDWALL FRAMING: FRAME LINE 5



ENDWALL SHEETING & TRIM: FRAME LINE 5

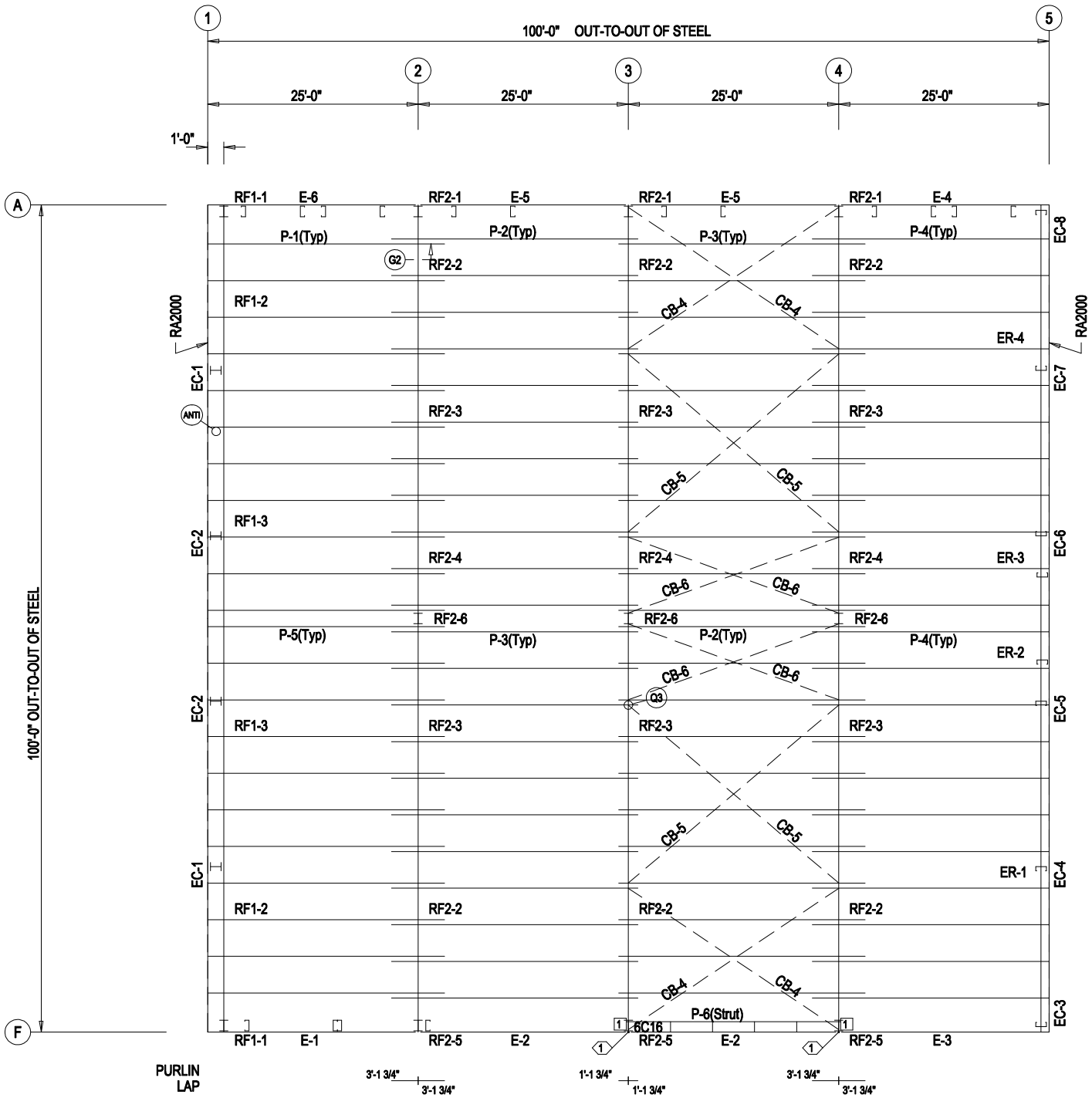
The Engineer whose seal and signature appear on these documents represent Whirlwind Steel Buildings, Inc., and is not the Engineer of Record for the overall project. The Engineer's responsibility is limited to material designed and manufactured by Whirlwind Steel Buildings, Inc.



REV	DATE	DESCRIPTION	BY	CHK	DESC: ENDWALL FRAMING		BLDG. SIZE: 100'-0" x 100'-0" x 12'-0"	
					CUSTOMER: Olympia Steel Buildings		LOCATION: McKees Rocks, PA 15136	
					REFERENCE: Project			
					JOBSITE: City, State Zip		COUNTY: County	
					DWN:	CHK:	DATE: 12/29/23	ENG: Renee_Sides


SPECIAL BOLTS					
ROOF PLAN					
○ ID	QUAN	TYPE	DIA	LENGTH	WASH
1	4	A307	1/2"	1 1/4"	0

CONNECTION PLATES	
ROOF PLAN	
□ ID	MARK/PART
1	AK106




ROOF FRAMING PLAN

The Engineer whose seal and signature appear on these documents represent Whirlwind Steel Buildings, Inc., and is not the Engineer of Record for the overall project. The Engineer's responsibility is limited to material designed and manufactured by Whirlwind Steel Buildings, Inc.

	REV	DATE	DESCRIPTION	BY	CHK	DESC:		BLDG. SIZE:				
						ROOF FRAMING		100'-0" x 100'-0" x 12'-0"				
						CUSTOMER:		LOCATION:				
						Olympia Steel Buildings		McKees Rocks, PA 15136				
						REFERENCE:						
						Project						
						JOBSITE:		COUNTY:				
						City, State Zip		County				
						DWN:	CHK:	DATE:	ENG:	JOB NO:	DWG NO:	ISSUE
								12/29/23		Renee_Sides		

All bolted joints with ASTM F3125 Grade A325 bolts are specified as Snug-Tightened Joints in accordance with the Specification of Structural Joints Using High-Strength Bolts, June 11, 2020, installation as given in Section 7.1 Washers are not required for Snug-Tightened Joints using standard standard size holes per Section 6.1 of the Specification

[illegible]

**OLYMPIA**  
STEEL BUILDINGS.

REV	DATE	DESCRIPTION	BY	CHK	DESC: RIGID FRAME ELEVATION				BLDG. SIZE: 100'-0" x 100'-0" x 12'-0"				
					CUSTOMER: Olympia Steel Buildings				LOCATION: McKees Rocks, PA 15136				
					REFERENCE: Project								
					JOBSITE: City, State Zip							COUNTY: County	
					DWN:	CHK:	DATE: 12/29/23	ENG:	JOB NO: Renee Sides		DWG NO:	ISSUE	

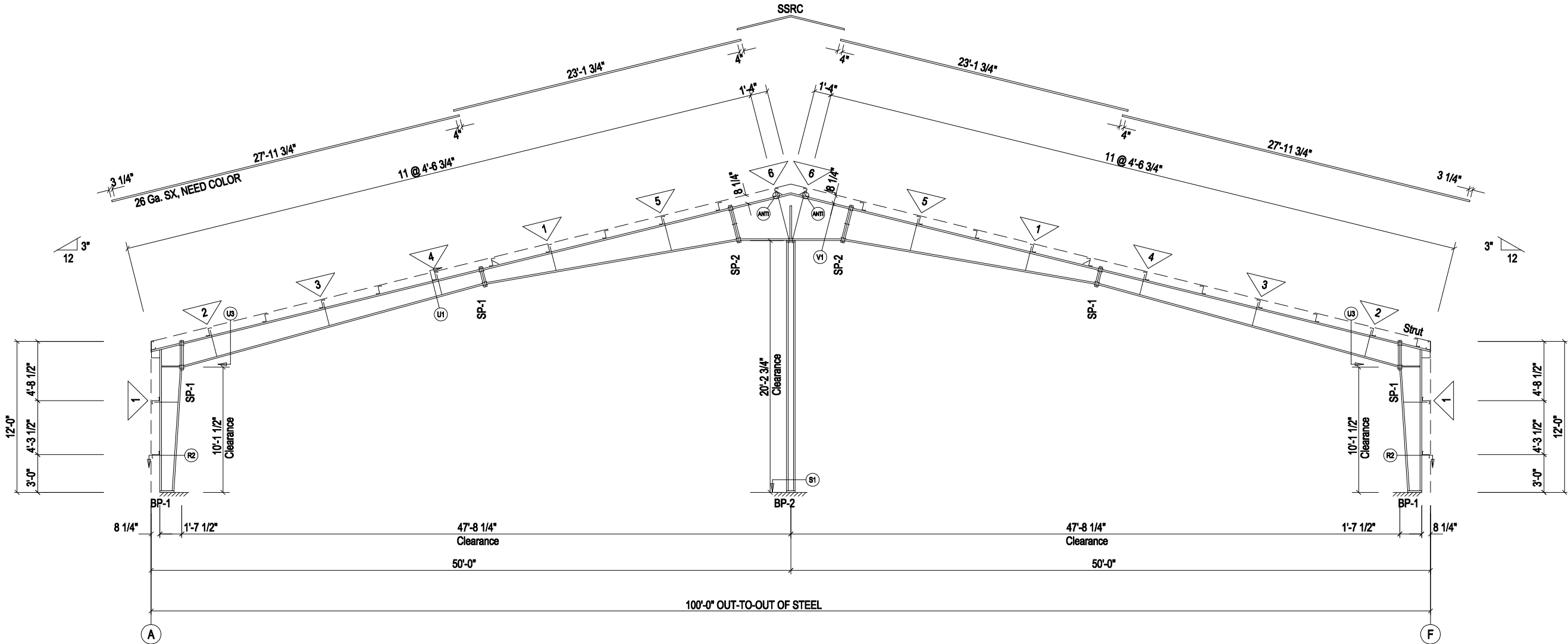
The Engineer whose seal and signature appear on these documents represent Whirlwind Steel Buildings, Inc., and is not the Engineer of Record for the overall project. The Engineer's responsibility is limited to material designed and manufactured by Whirlwind Steel Buildings, Inc.



BOLT TIGHTENING (Snug-Tight)

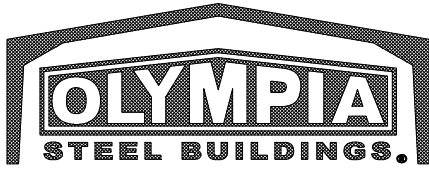
All bolted joints with ASTM F3125 Grade A325 bolts are specified as Snug-Tightened Joints in accordance with the Specification of Structural Joints Using High-Strength Bolts, June 11, 2020, installation as given in Section 7.1 Washers are not required for Snug-Tightened Joints using standard standard size holes per Section 6.1 of the Specification

Pretensioning methods, including Turn-of-Nut, calibrated wrench, twist-off tension control bolts or direct tension indicator are not required. Installation inspection requirements for Snug-Tight Bolt is found in Section 9.1 of the Specification.



RIGID FRAME ELEVATION: FRAME LINE 2 3 4

The Engineer whose seal and signature appear on these documents represent Whirlwind Steel Buildings, Inc., and is not the Engineer of Record for the overall project. The Engineer's responsibility is limited to material designed and manufactured by Whirlwind Steel Buildings, Inc.

						REV	DATE	DESCRIPTION	BY	CHK	DESC: RIGID FRAME ELEVATION				BLDG. SIZE: 100'-0" x 100'-0" x 12'-0"	
											CUSTOMER: Olympia Steel Buildings				LOCATION: McKees Rocks, PA 15136	
											REFERENCE: Project					
											JOBSITE: City, State Zip				COUNTY: County	
											DWN:	CHK:	DATE: 12/29/23	ENG:	JOB NO: Renee_Sides	ISSUE