

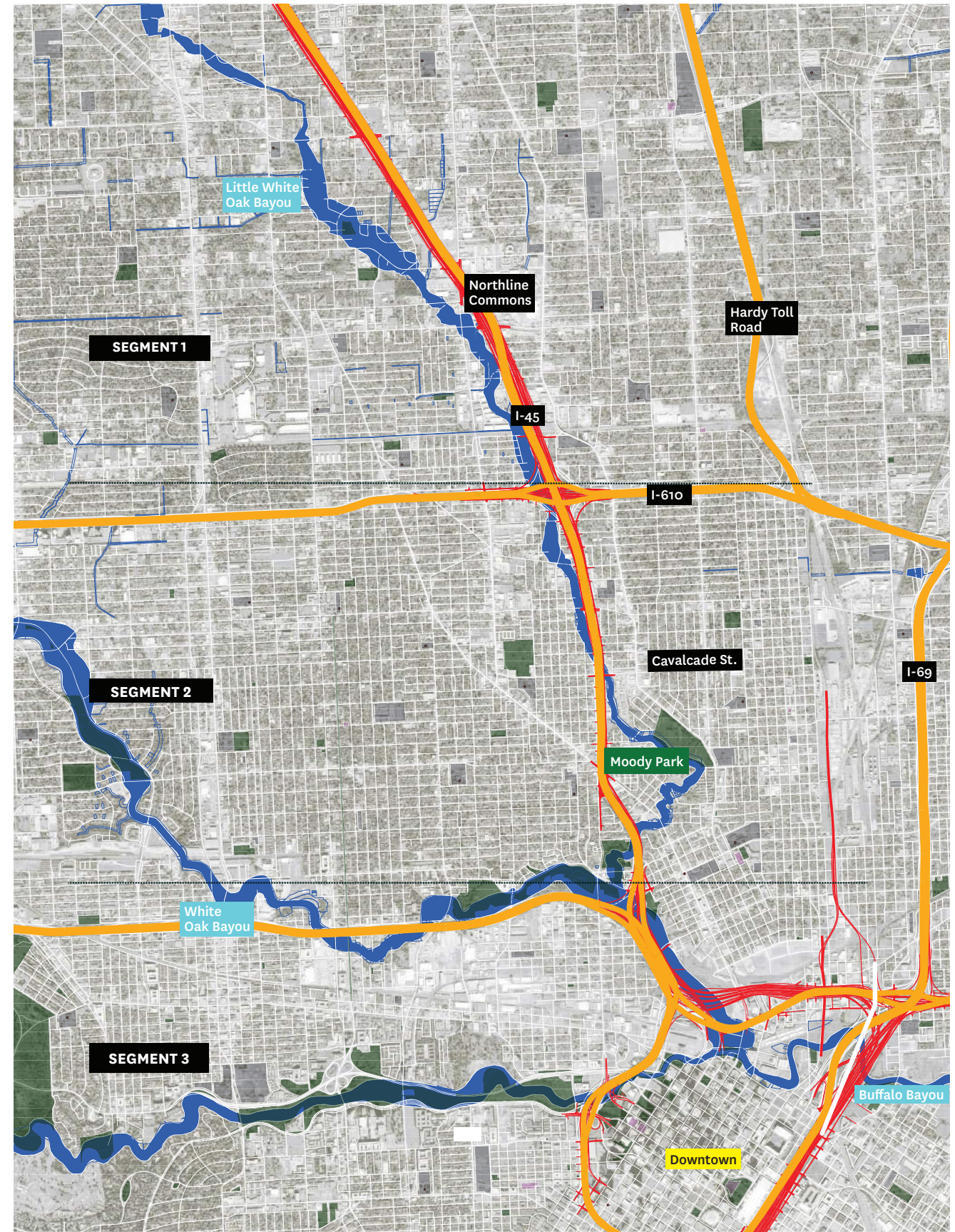


MEMBERS

**Air Alliance Houston
Avenue CDC
Bayou City Waterkeeper
Bayou Preservation
Bike Houston
Buffalo Bayou Partnership
Downtown District
Eastwood Civic Association
Freedman's Town Preservation Committee
Friends of Woodland Park
Galveston Bay Keeper
Germantown Historic District
Greater East End
Greater Heights Super Neighborhood 15
Greater Northside Management District
Harris County Commissioner Rodney Ellis
Heritage Society
Hermann Park Conservancy
Housing for Houston
Houston Parks Board
Kinder Foundation
LINK Houston
Lower Brazos River Watch
Montie Beach Civic Club**

**Montrose District
Museum Park Super Neighborhood 66
Saint Arnold Brewing Company
Scenic Houston
Trees for Houston
Memorial Park Super Neighborhood 22
White Oak Bayou Association
Woodland Heights Civic Association**

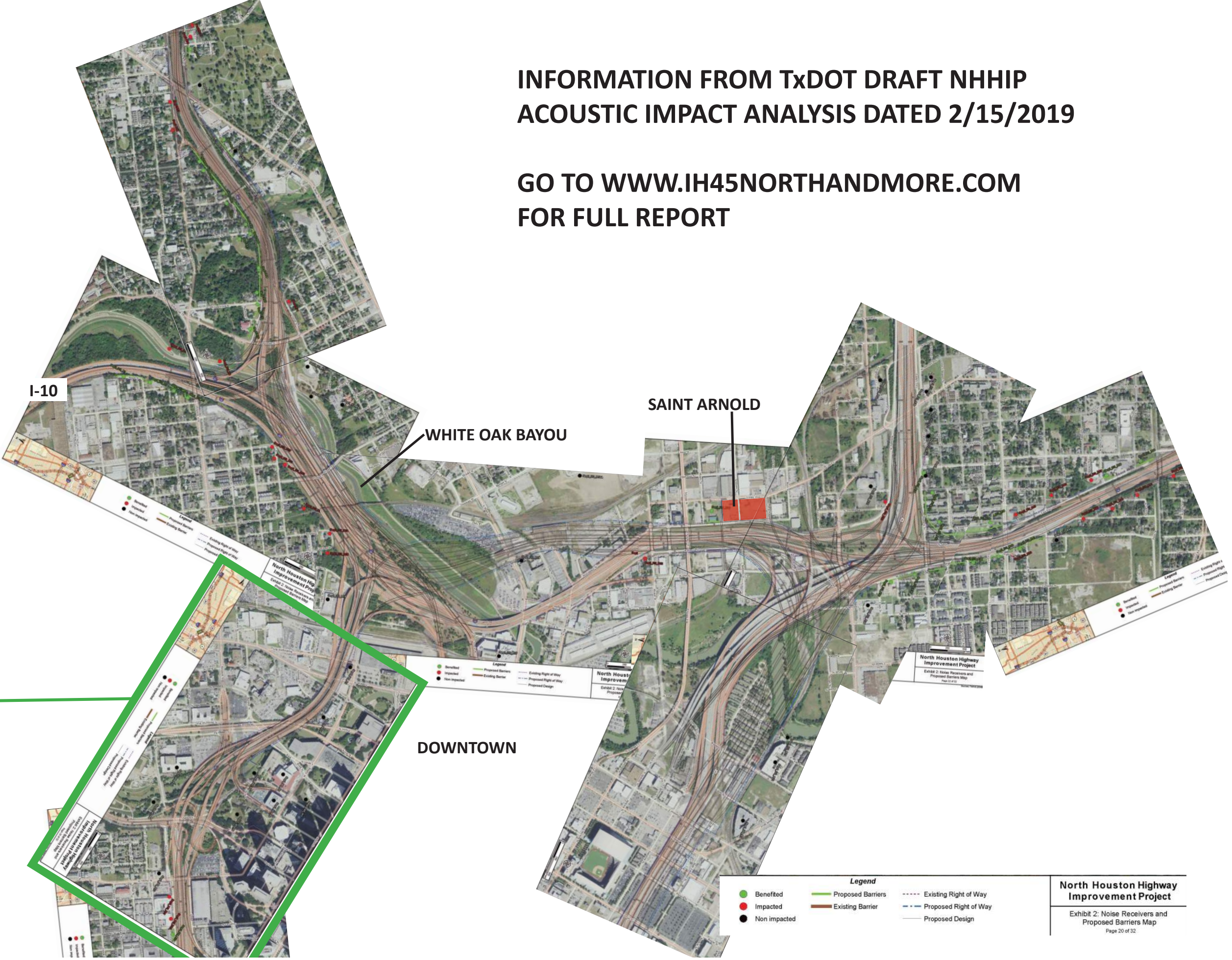
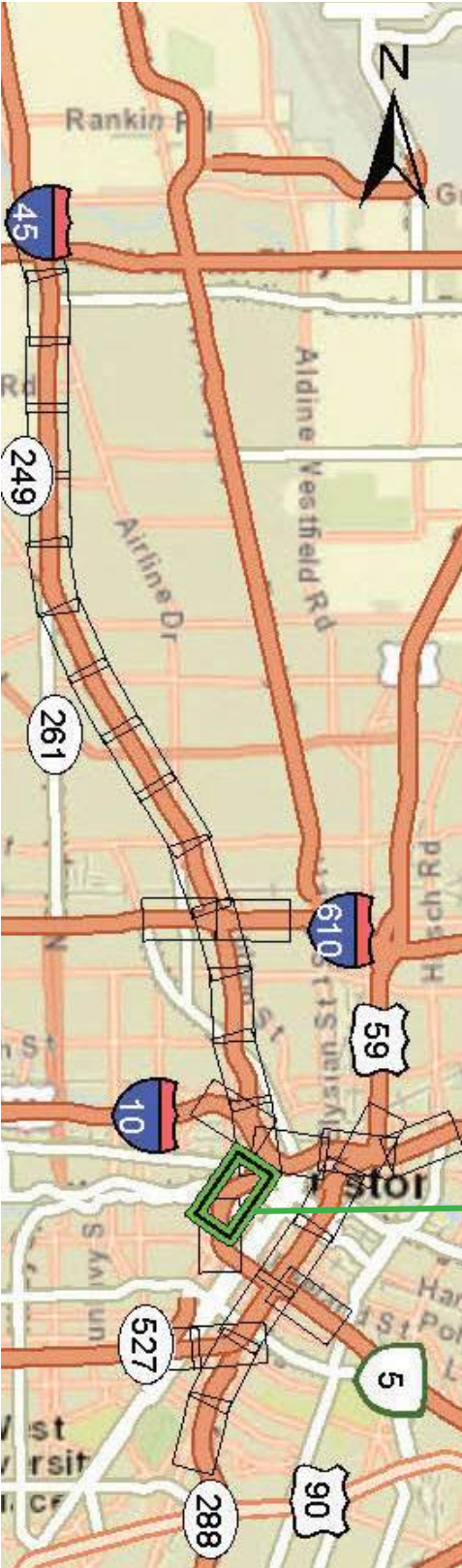
... and you!



TxDOT NORTH HOUSTON HIGHWAY IMPROVEMENT PROJECT (NHHIP)

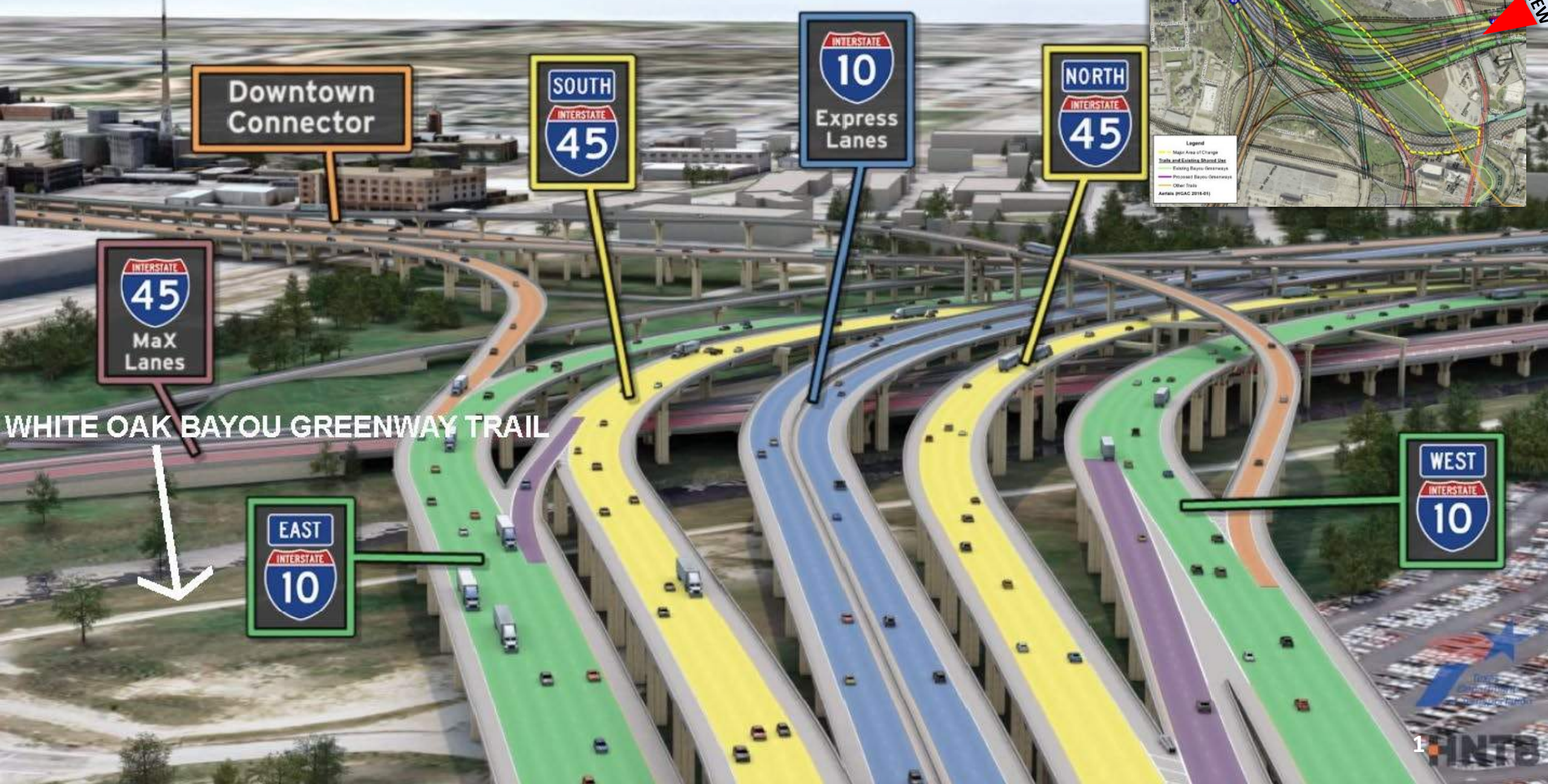
INFORMATION FROM TxDOT DRAFT NHHIP
ACOUSTIC IMPACT ANALYSIS DATED 2/15/2019

GO TO WWW.IH45NORTHANDMORE.COM
FOR FULL REPORT



TxDOT DRAFT ENVIRONMENTAL IMPACT STATEMENT - ACOUSTIC IMPACTS

VIEW OF PROPOSED TxDOT HIGHWAYS



Downtown Connector

SOUTH INTERSTATE 45

INTERSTATE 10 Express Lanes

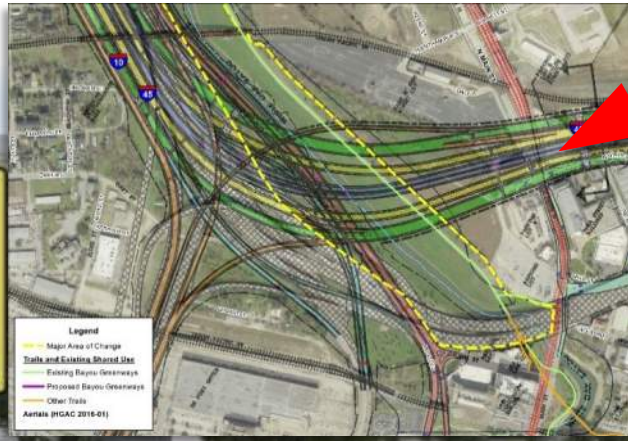
NORTH INTERSTATE 45

INTERSTATE 45 MaX Lanes

WHITE OAK BAYOU GREENWAY TRAIL

EAST INTERSTATE 10

WEST INTERSTATE 10



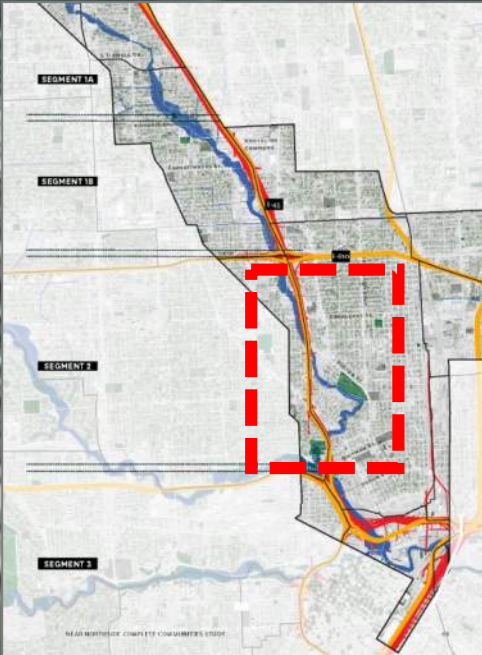
TWENTY LANES OF TRAFFIC THROUGH NEAR NORTHSIDE – SEGMENT 2



LITTLE WHITE OAK BAYOU

PATTON ST

LITTLE WHITE OAK BAYOU



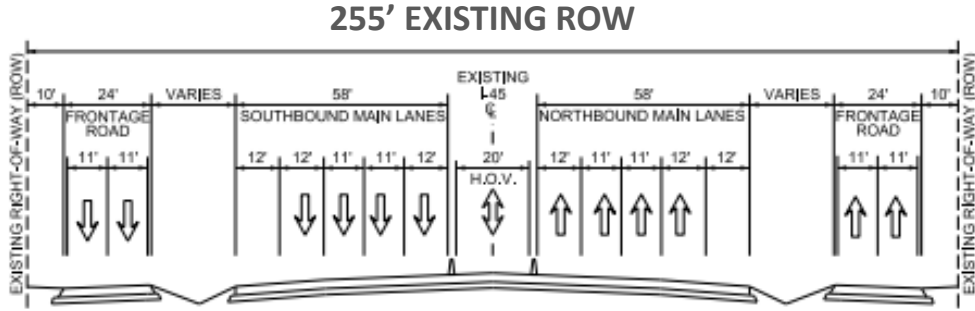
I-610 AND I-45 IMPACTS



LITTLE WHITE OAK BAYOU

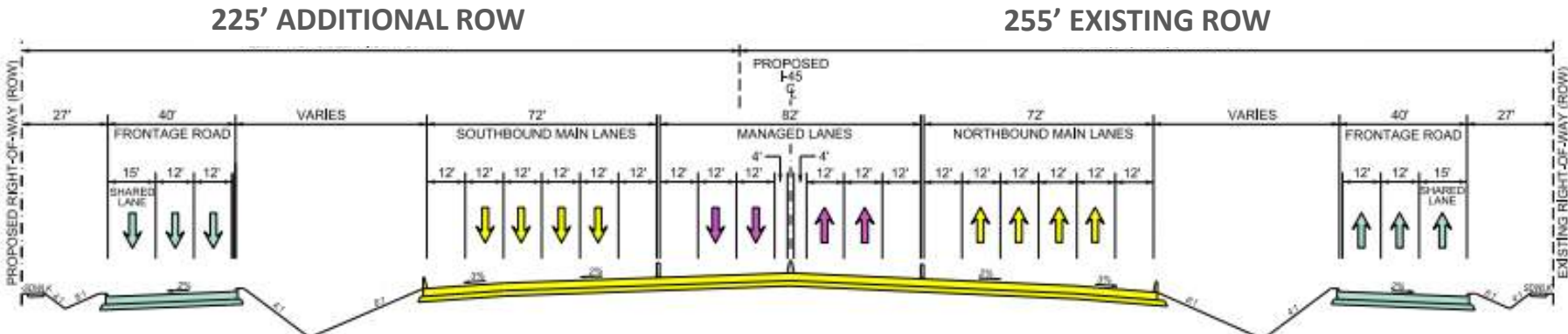
CONNECTIVITY AND MOBILITY CONCERNS – AIRLINE TO SHEPHERD

- ROW BEING DOUBLED IN THIS AREA
- THREE LANE FEEDER CREATES SPEEDWAY THROUGH NEIGHBORHOOD – TWO LANES PREFERRED
- PROPOSED 15' OUTER FEEDER TO ACCOMMODATE BICYCLES IS SAFETY CONCERN. SHARED-USE SIDEWALKS PREFERRED

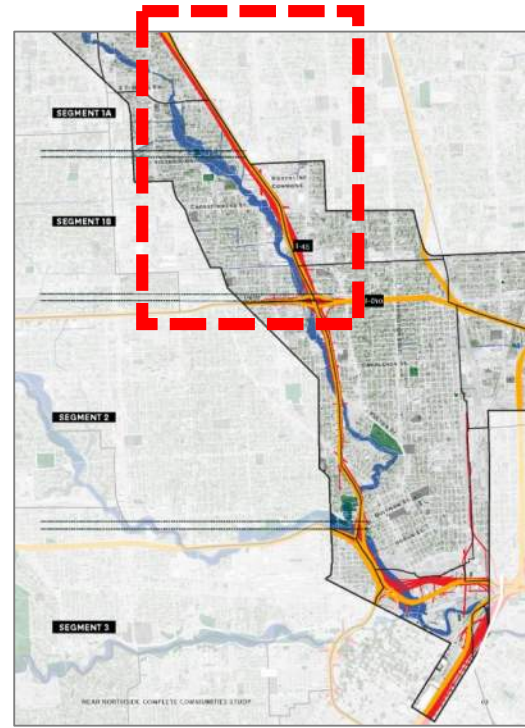


EXISTING TYPICAL SECTION
AIRLINE DRIVE TO SHEPHERD DRIVE

480' PROPOSED ROW
18 LANES OF TRAFFIC



PROPOSED TYPICAL SECTION
AIRLINE DRIVE TO SHEPHERD DRIVE



AIR QUALITY IMPACTS

Pollutant

ozone

diesel particulate matter*

benzene

1,3 butadiene

acetaldehyde

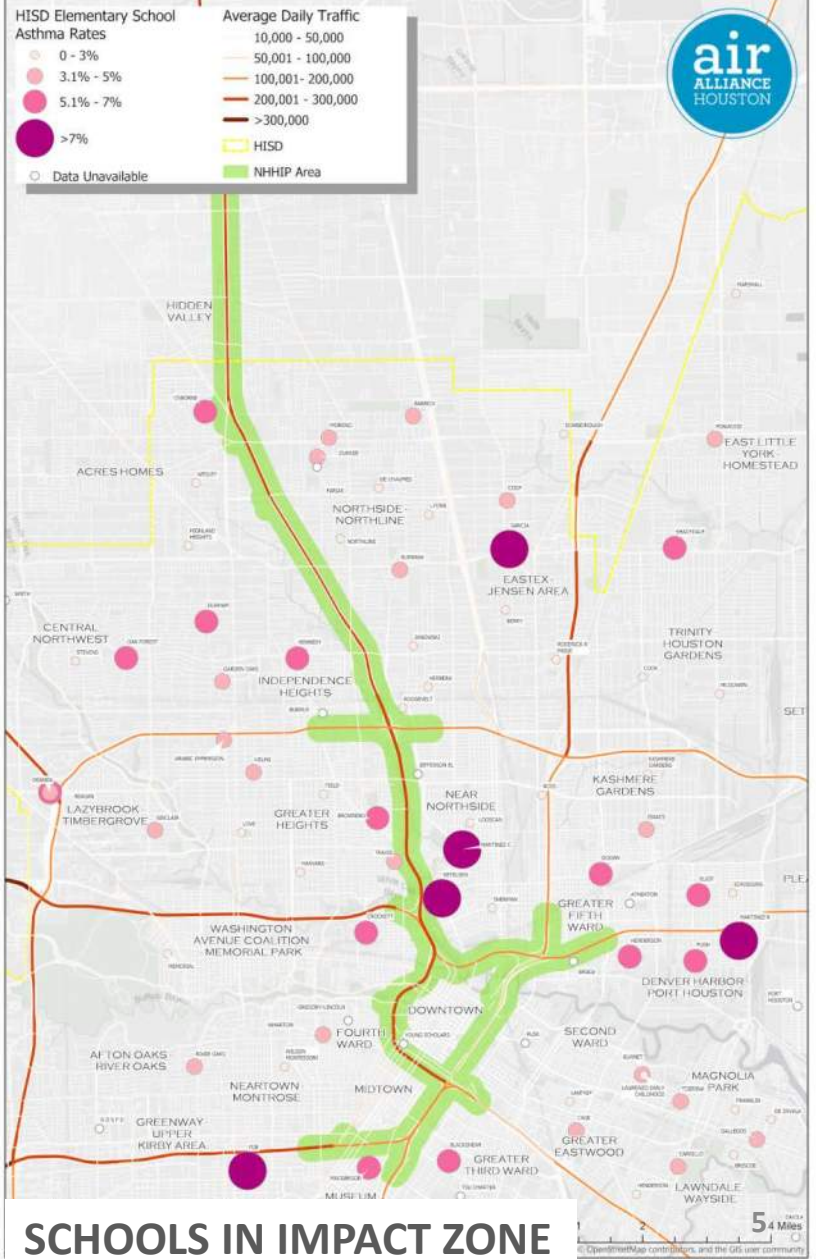
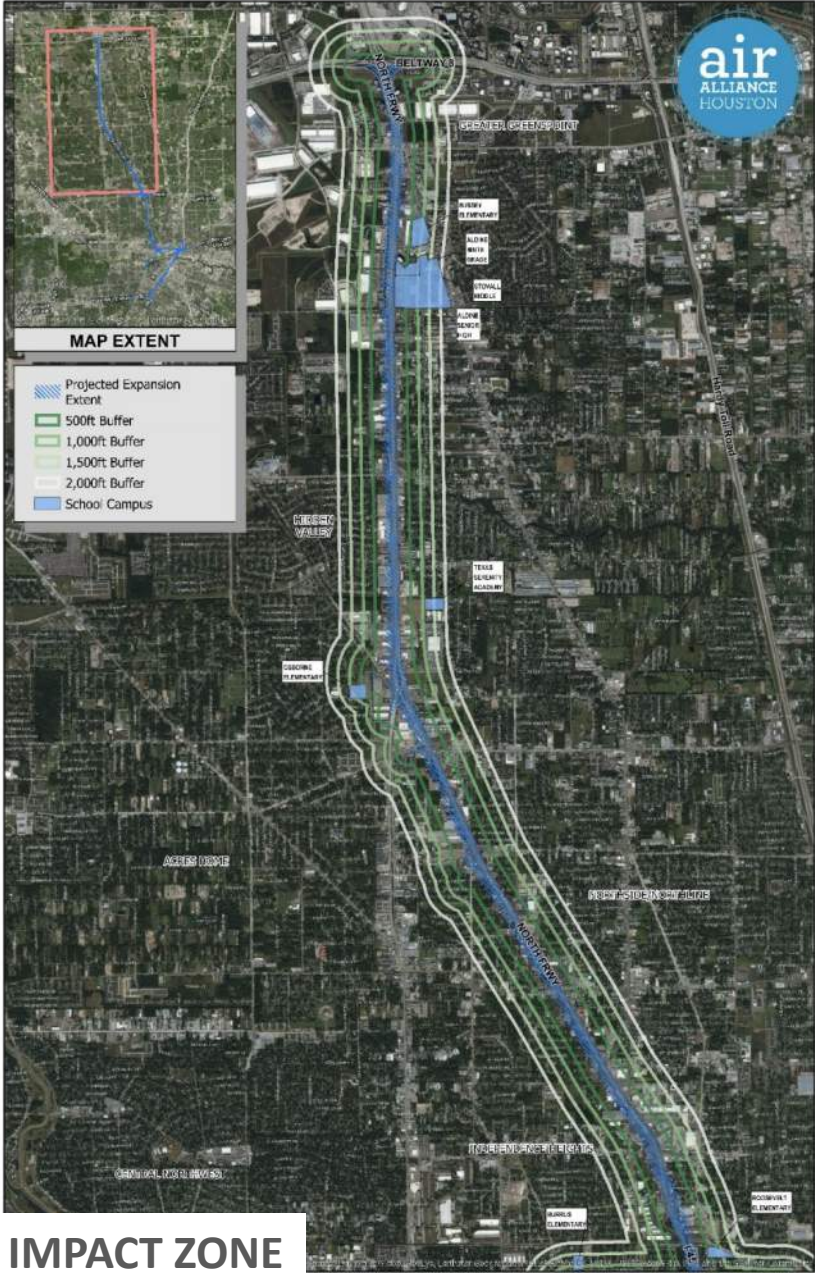
acrolein

formaldehyde

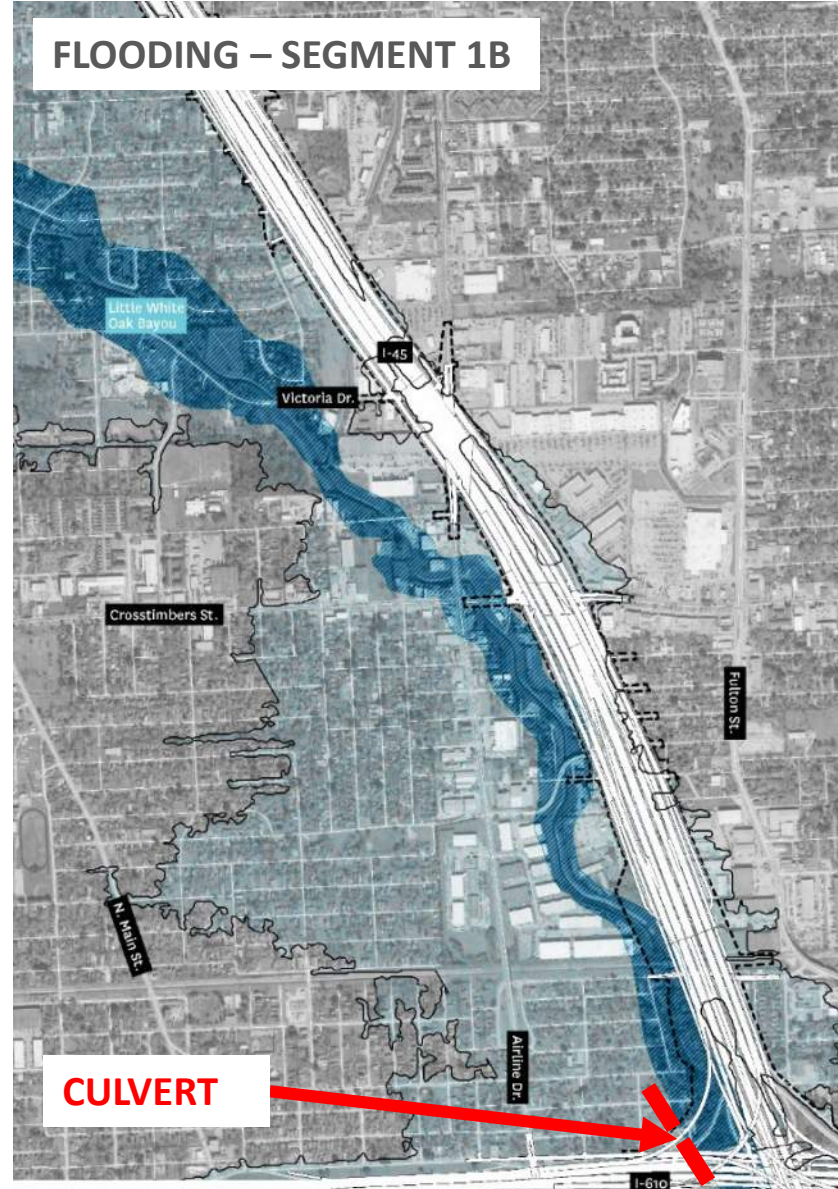
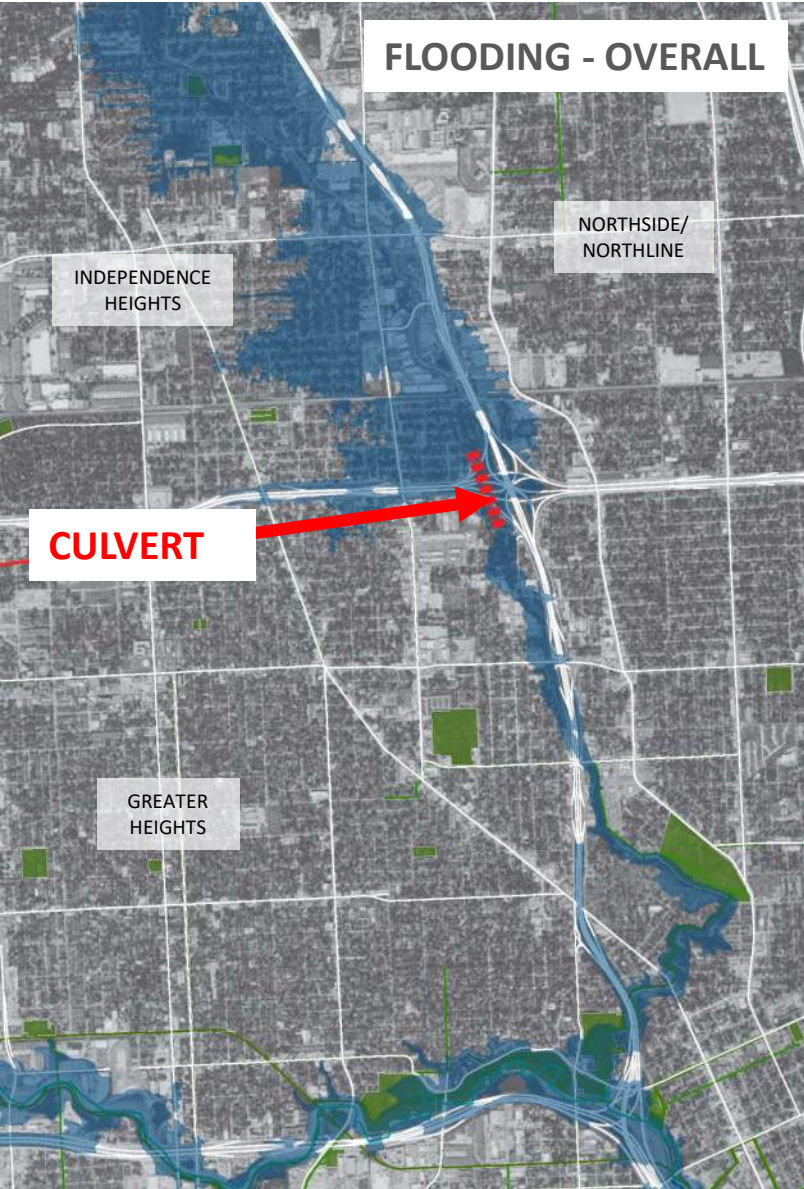
naphthalene

polycyclic organic matter

ethylbenzene



INDEPENDENCE HEIGHTS – I-45 FLOODING AND NOISE



- FLOODWAY
- 100 YEAR FLOOD PLAIN
- 311 CALLS (2017,15,13,11)



- 66 DB
- 71 DB