



Just what is a Digital Twin?

Join WFCRC

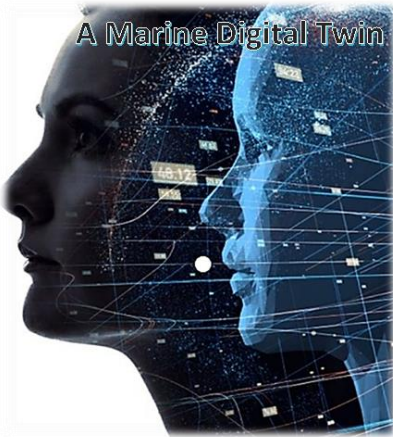
The World Federation for Coral Reef Conservation
Vic Ferguson

+1 512.986.1902 4010 Skipper Rd.
Executive Director/Founder

Sebring, Florida 33875
vferguson001@gmail.com

For a **Diver**  Every day is **Ocean Day** © 2018 Inshore

WFCRC Beach and Coral Reef Registry



A digital twin is a virtual representation of a physical object and/or system. In the context of coastal environments and coral reefs, creating a digital twin involves using various technologies like 3D mapping, sensors, and data modeling to replicate the reef's environment in an open digital GIS format and... the most relevant data feature is the social impact of human activity on the reef. When an observation is recorded it provides the opportunity for local stakeholders to share an in depth description by the person gathering the information, of how they perceive the health and well-being of coastal ecosystems.

For coral reef planning and conservation, a digital twin serves several purposes:

1. **Monitoring and Analysis:** Sensors placed in the reef gather real-time data on factors like water temperature, pH levels, biodiversity, and human impact. This data is used to create an accurate **representation of the reef's current state in the digital twin**. With Ai analyzing this data, scientists can track changes, identify threats, and understand the reef's health. This is a direct detection of ecosystems health rather than a remote detection.
2. **Simulation and Predictive Modeling:** Using the digital twin, scientists can simulate various scenarios, such as the impact of climate change, pollution, or human activity on the reef. This helps in predicting potential changes or damage to the ecosystem, allowing for better planning and mitigation strategies.
3. ***Decision-Making Support:** Conservationists and policymakers can use the digital twin to visualize the potential consequences of different interventions or management strategies. It assists in making informed decisions about reef protection, restoration, sustainable use now and for the future.

IN PARTNERSHIP WITH



4. **Education and Outreach:** Digital twins can be used as educational tools to raise awareness about coral reefs and the importance of conservation. They can help illustrate the complexities of these ecosystems and the impact of human activities on them.

Overall, **THE DIGITAL TWIN** initiative provides a powerful tool for understanding, managing, and conserving coral reefs by offering a GIS dynamic, data-driven model of these intricate ecosystems, aiding in planning strategies for their preservation and for the “*what if*” scenario .

WFCRC
Survey123



WFCRC
Map Dashboard



The World Federation for Coral Reef Conservation
Executive Director/Founder
Relief without Borders
March for the Ocean
4010 Skipper Rd.
Sebring, Florida 33875
vferguson001@gmail.com (best method of contact)
+1 512.986.-1902

The only thing necessary for the triumph of evil is that good men do nothing”....Edmund Burke

IN PARTNERSHIP WITH

