

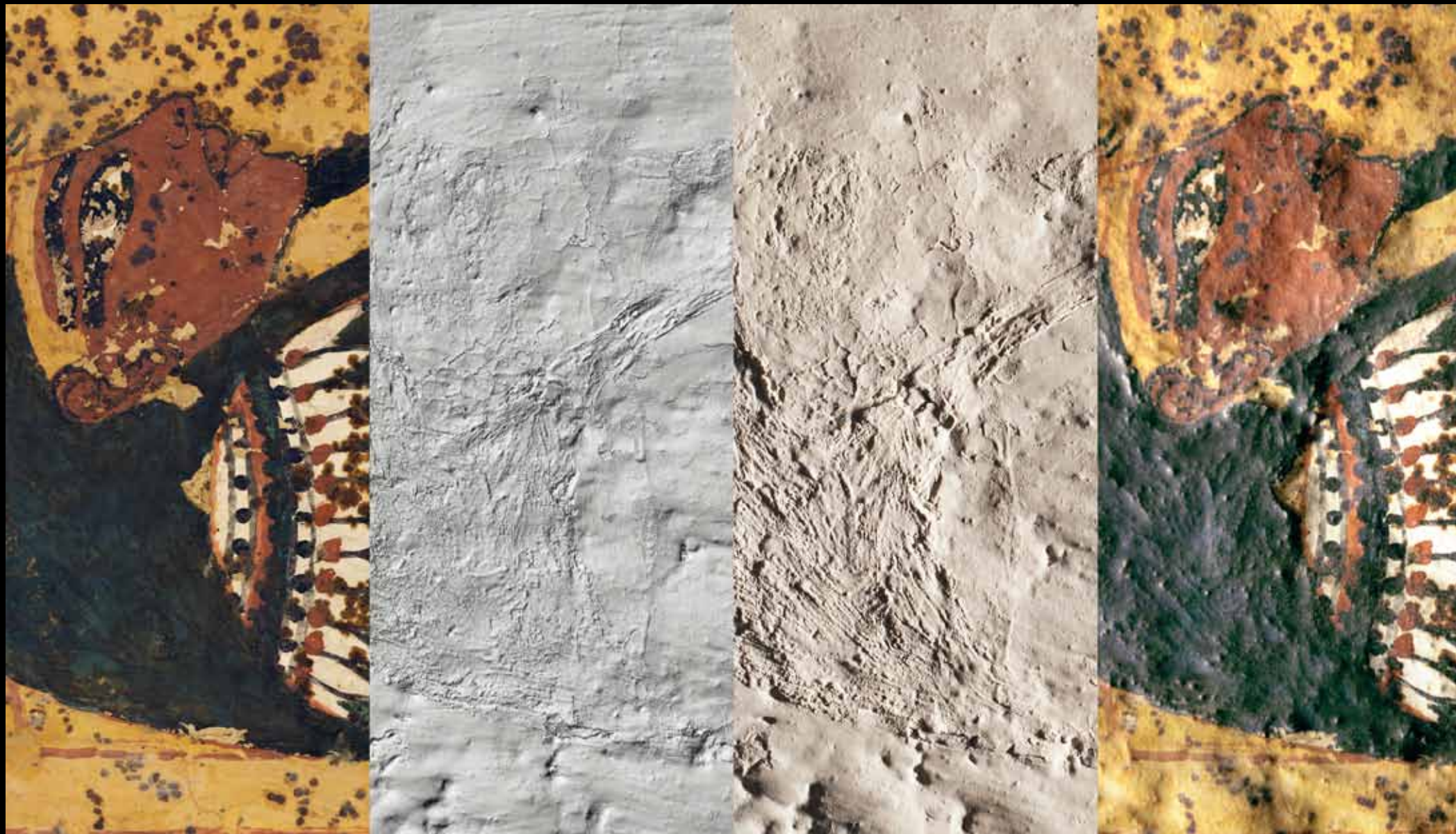
The multilayer file: surface 3D scanning  
as a complement to photographic documentation

[factum-arte.com](http://factum-arte.com)





Digital recording: color photography + 3D scanning  
Physical output: routed relief + color printing







**BBC** Sign in News Sport Weather Shop Earth

# NEWS

Home Video World UK Business Tech Science Magazine Entertainment

World Africa Asia Australia Europe Latin America Middle East US & Canada

## Search for Nefertiti's burial chamber in Tutankhamun tomb

© 2 October 2015 | Middle East



The whereabouts of Nefertiti's remains are a mystery

The Egyptian pharaoh queen Nefertiti could be buried in King Tutankhamun's tomb, says a British archaeologist.

Nicholas Reeves says he believes there may be two hidden doorways behind the Tutankhamun's burial chamber, leading to two undiscovered rooms.

Egyptian officials plan to use radar equipment to test Mr Reeves' theory that Nefertiti's remains were placed in one of them.

She was queen of Egypt during the 14th Century BC.

Mr Reeves believes the remains of Tutankhamun, who died 3,000 years ago aged 19, may have been rushed into an outer chamber of what was originally Nefertiti's tomb.

**CNN** News Regions Video TV Features Opinions More... International Edition Search

U.S. China Asia Middle East Africa Europe Americas

# Inside Africa

## Have Egyptologists found Nefertiti's long-lost tomb?

By Ian Lee  
 Updated 1627 GMT (2327 HKT) October 1, 2015 | Video Source: CNN

**EGYPTOLOGIST ON THE TRAIL OF NEFERTITI**  
 Nicholas Reeves | Egyptologist

Zenith Bank...  
<http://www.zenithbank.com>  
 Advertis

**New looks at history**

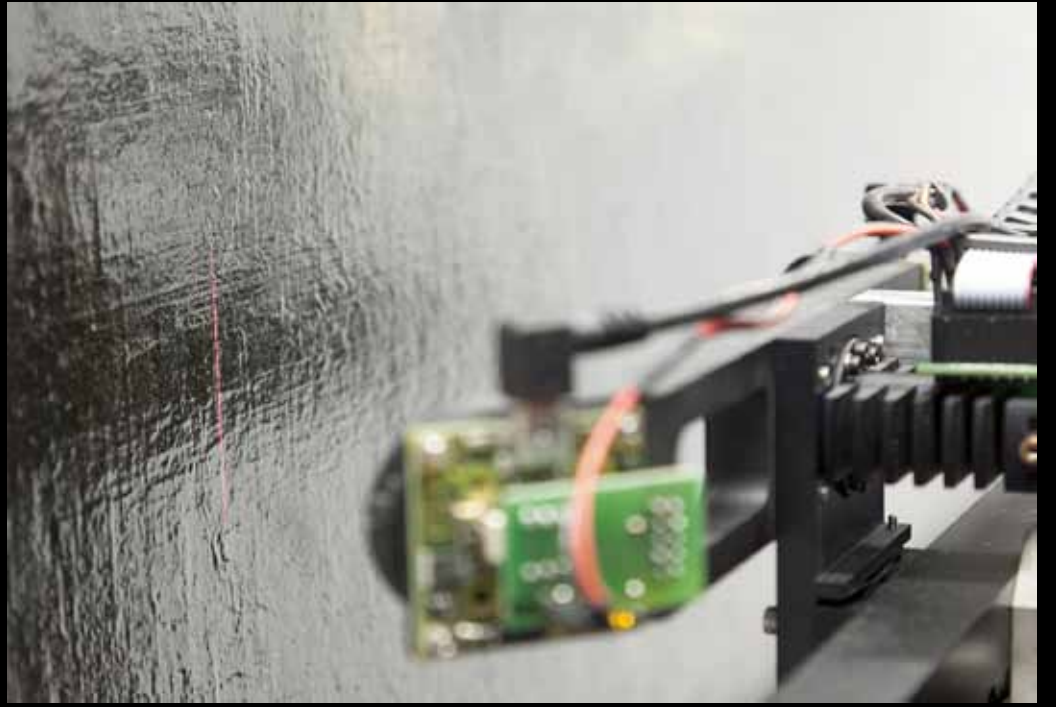
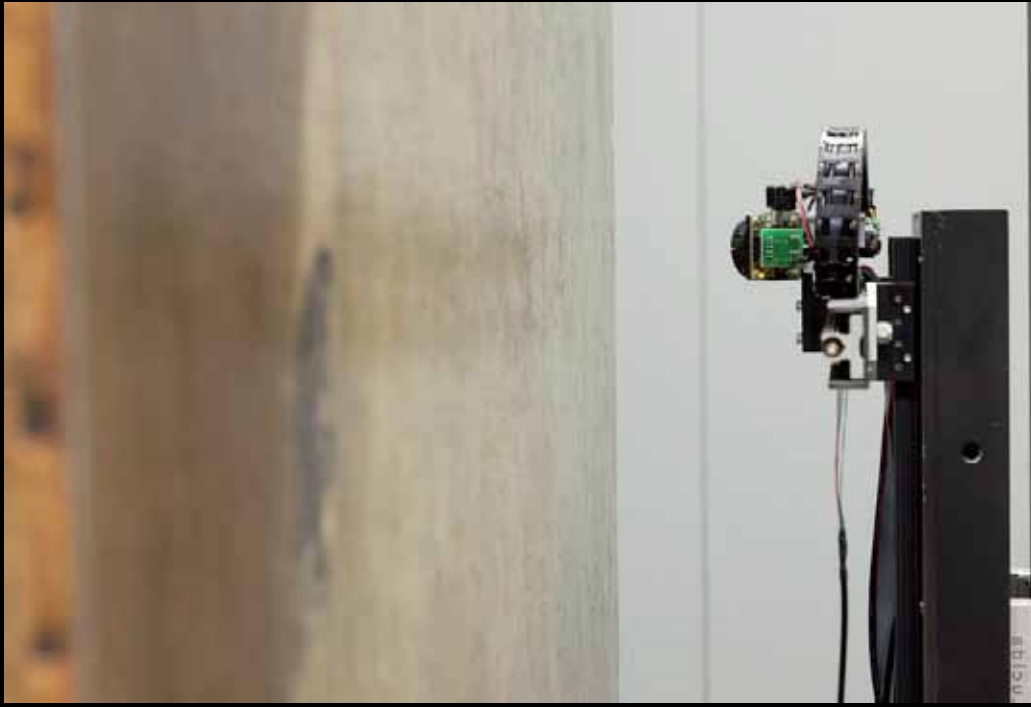
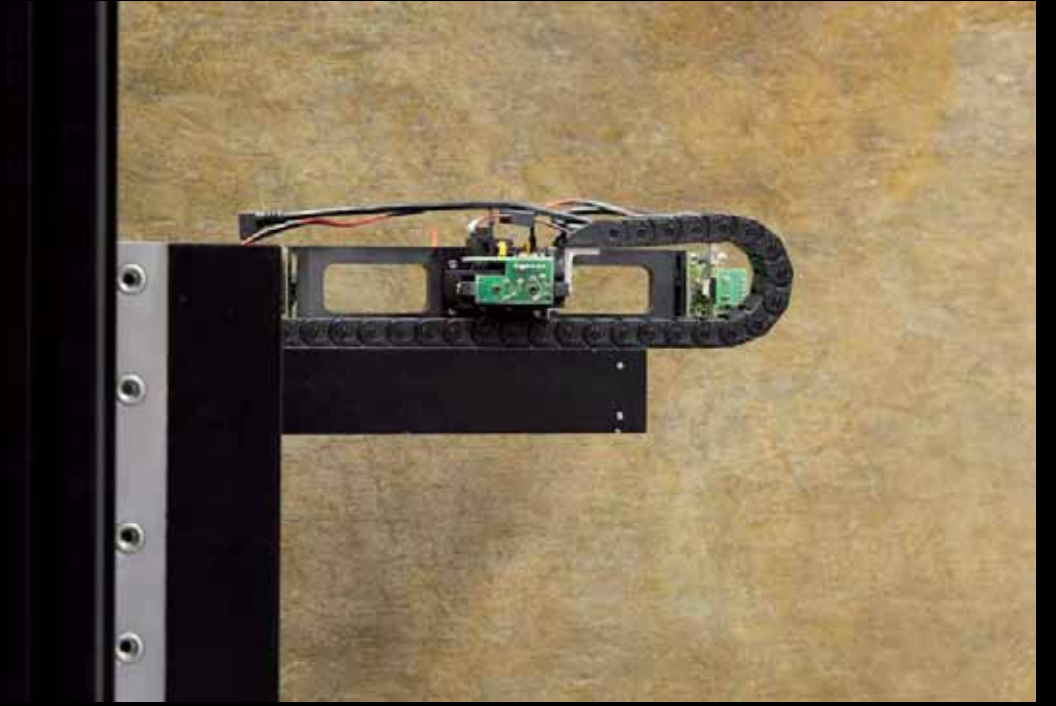
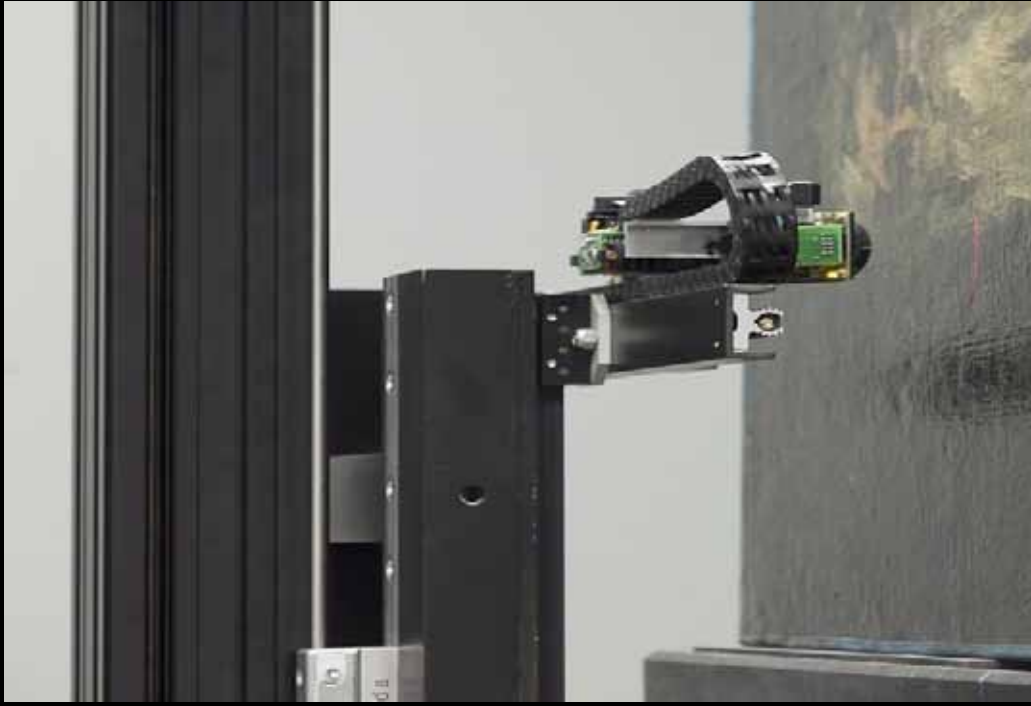
- Historical true
- New spec ancestor
- Scientists found

# Lucida 3D Scanner

Created by the artist and engineer Manuel Franquelo with Factum Arte







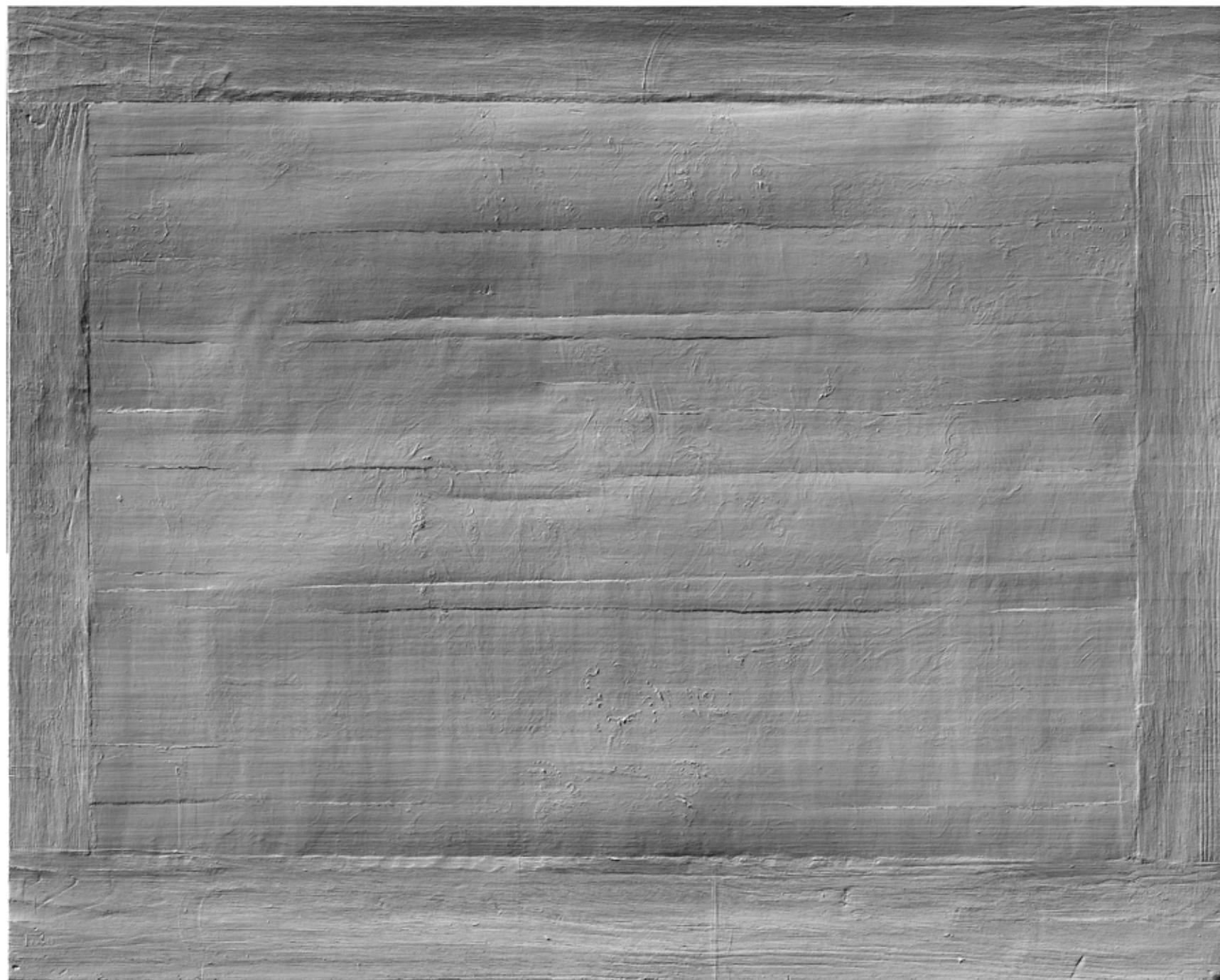
Factum Arte's testing board  
(raking light color photography)



Factum Arte's testing board  
(render of the relief data)

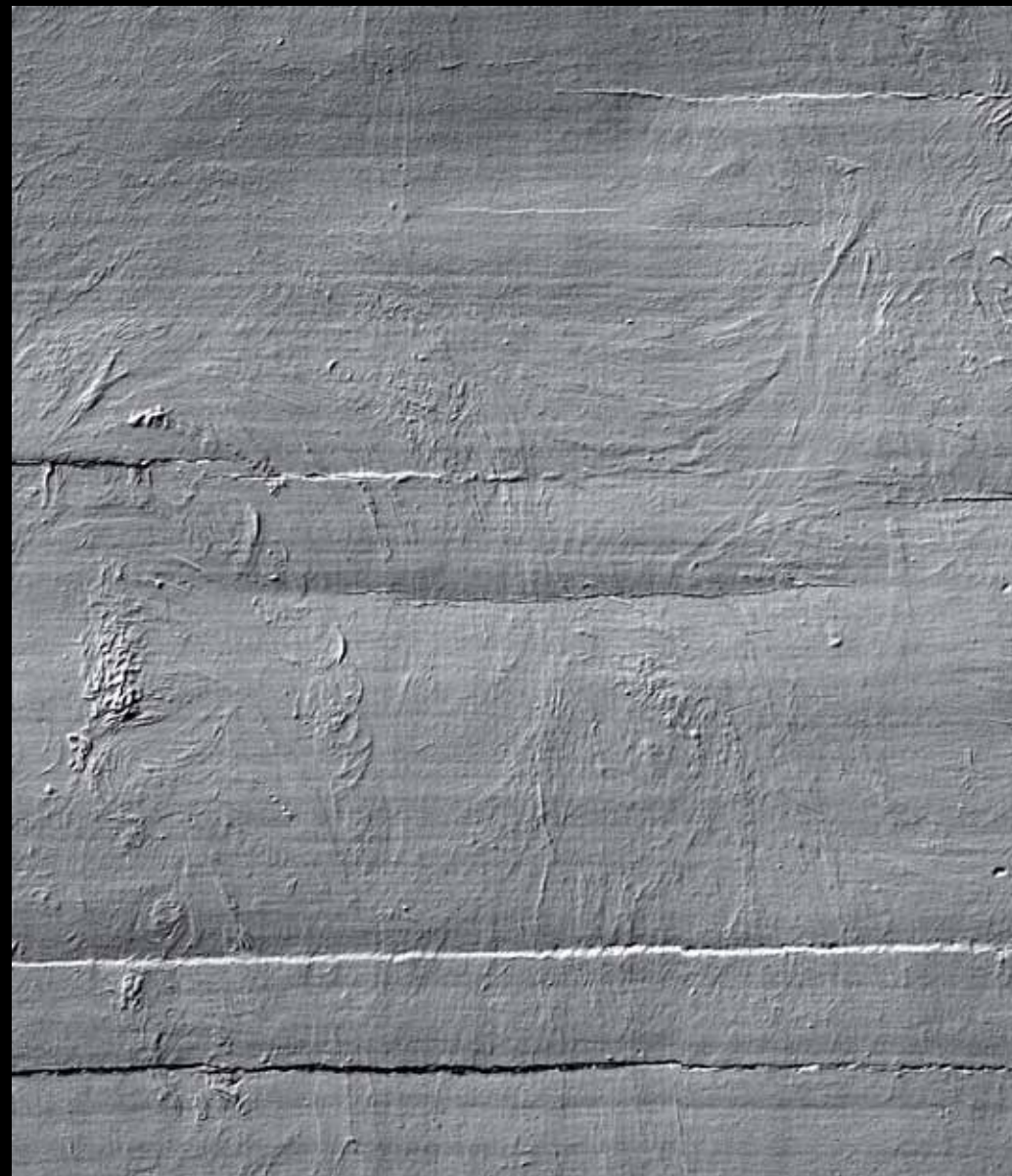
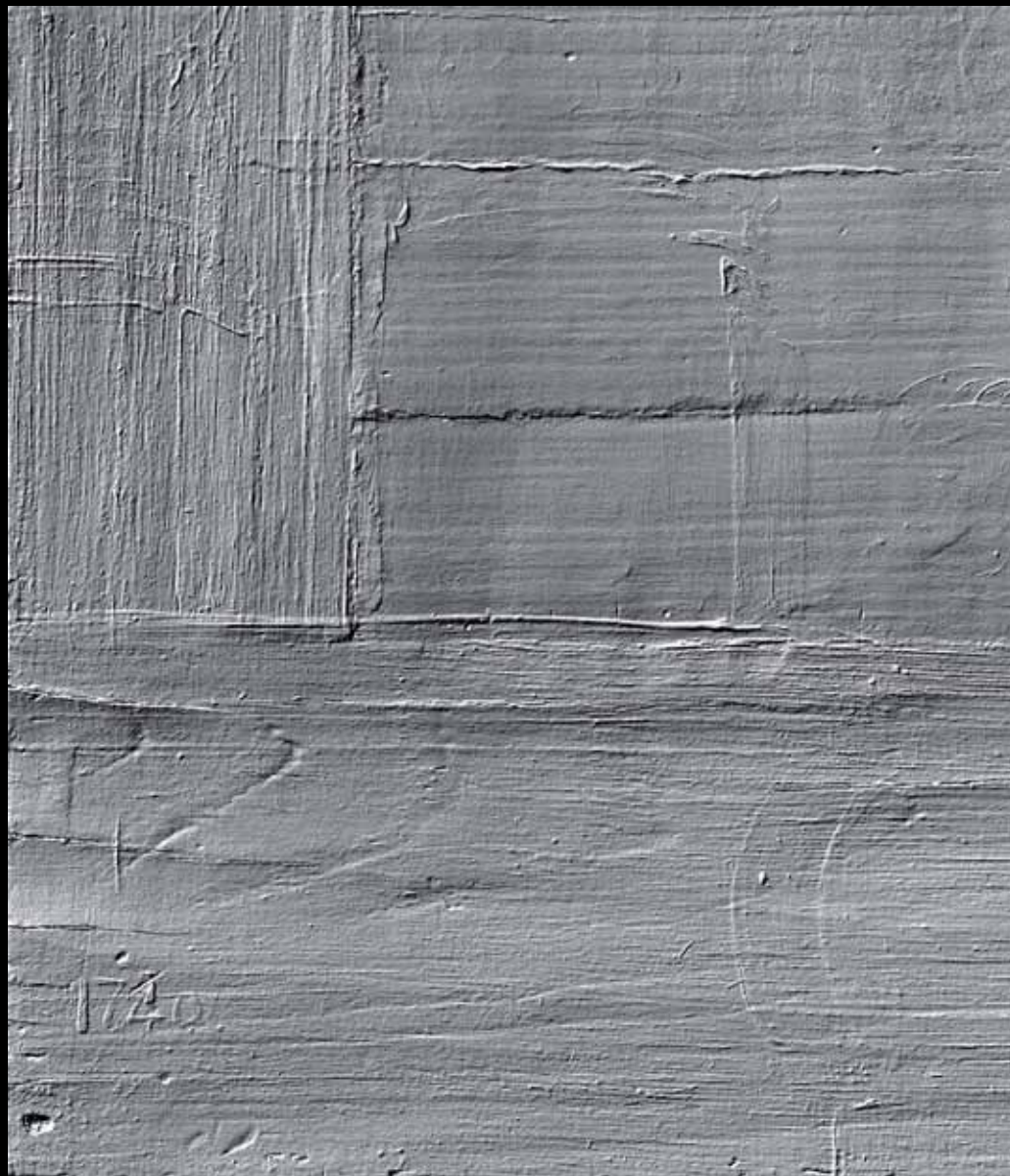




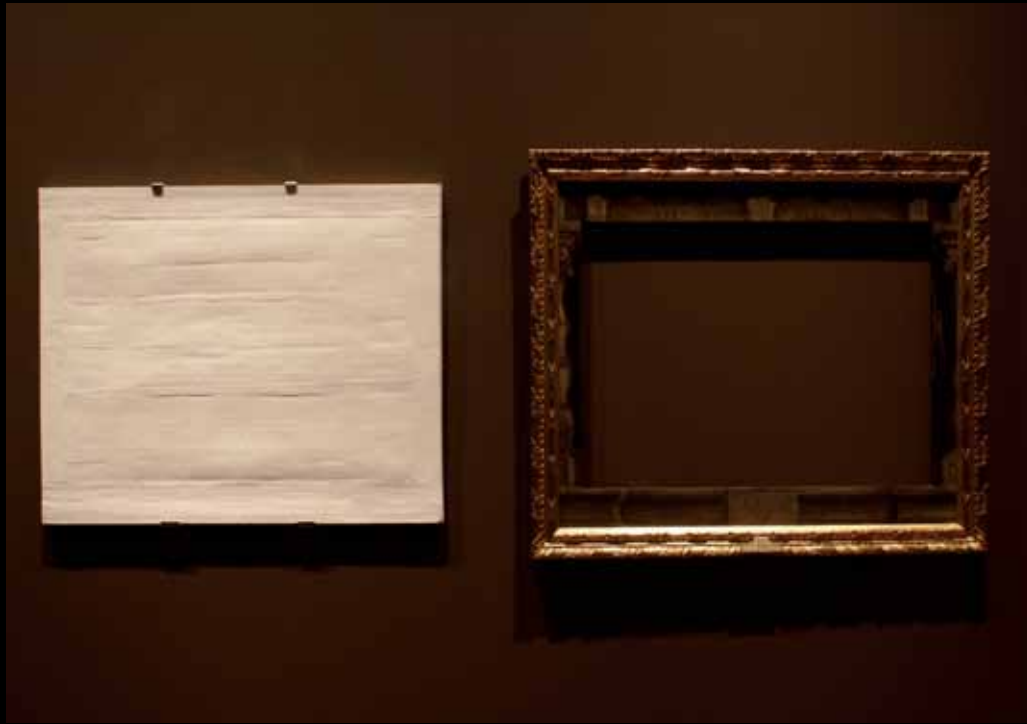


Resolution: 100 microns (10.000 points/cm<sup>2</sup>)

Relief data is processed both as 3D file and as shaded render



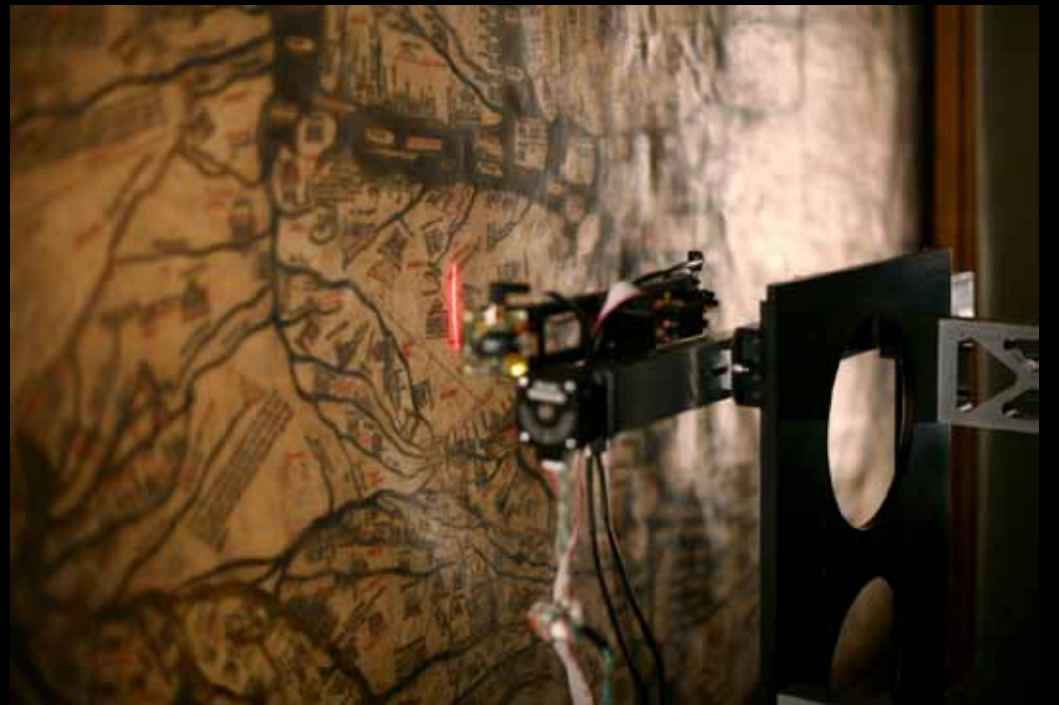
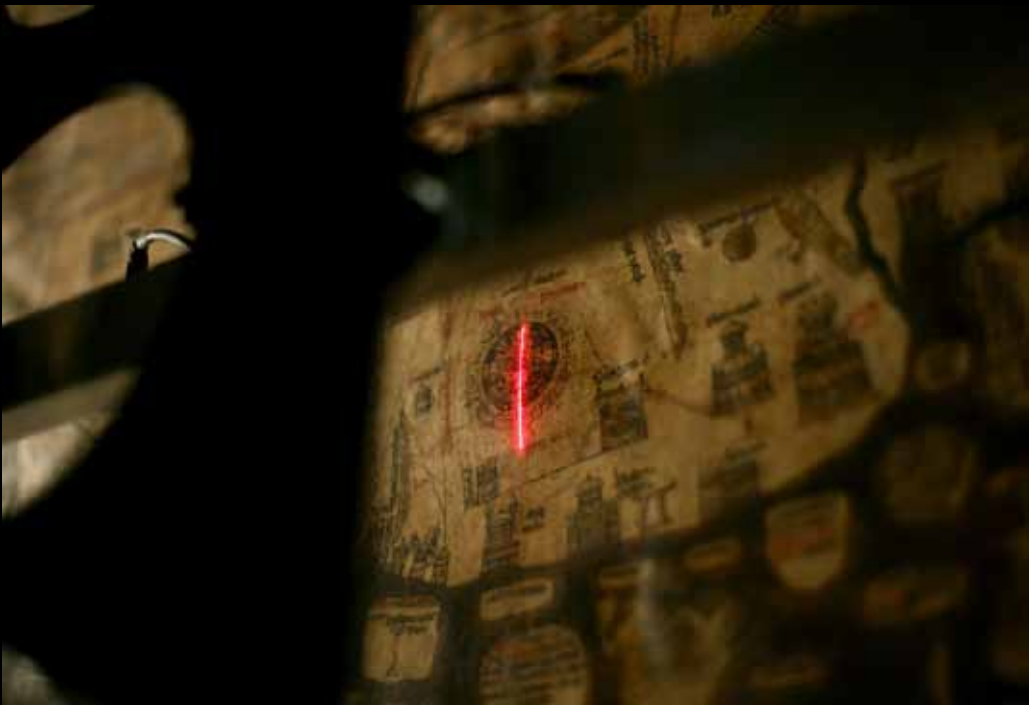
Reproduction of the relief in plaster for the exhibition *Rubens. The Triumph of the Eucharist* at the Museo del Prado, Madrid, 2014



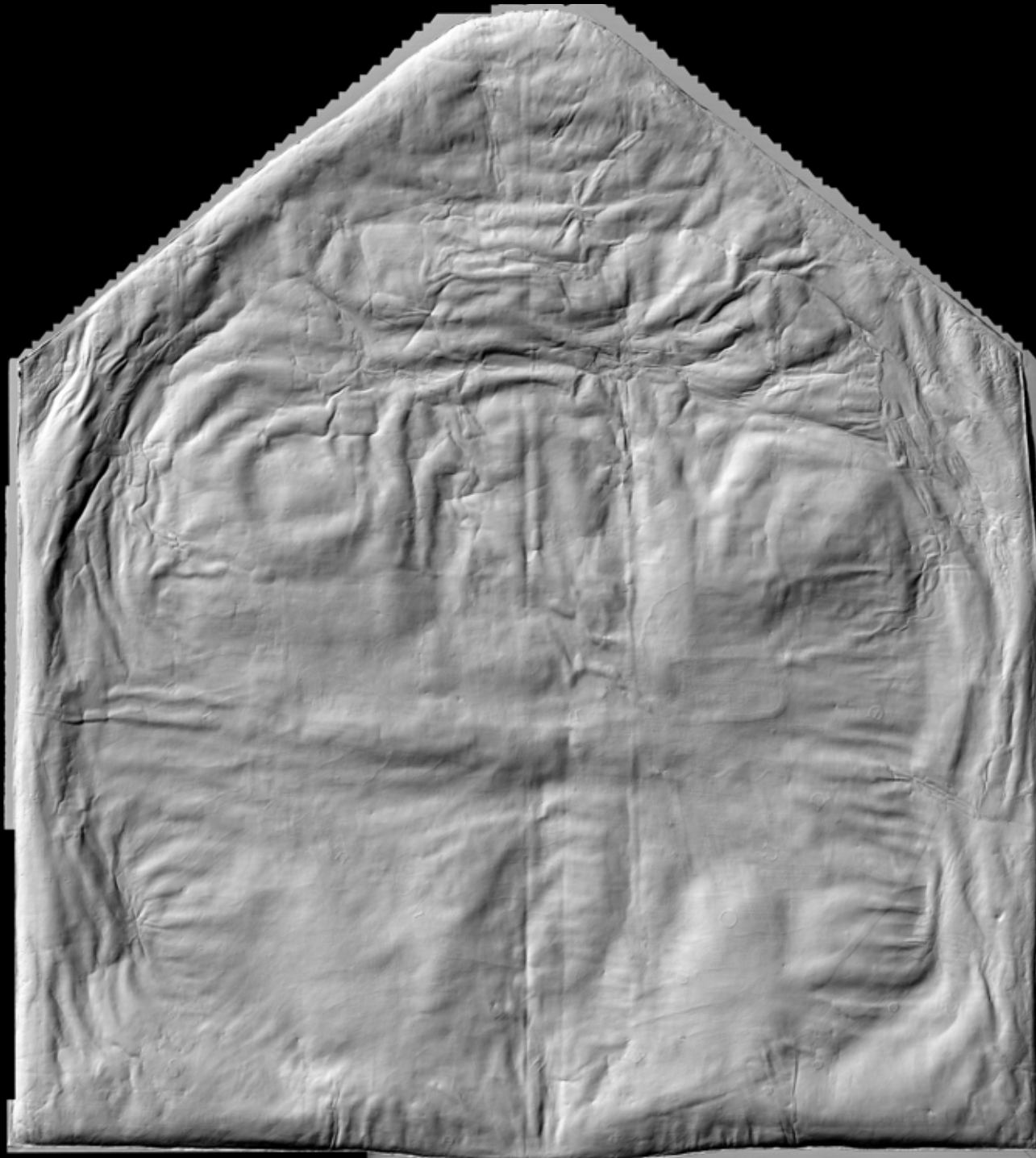
# Hereford Mappa Mundi







# Hereford Map



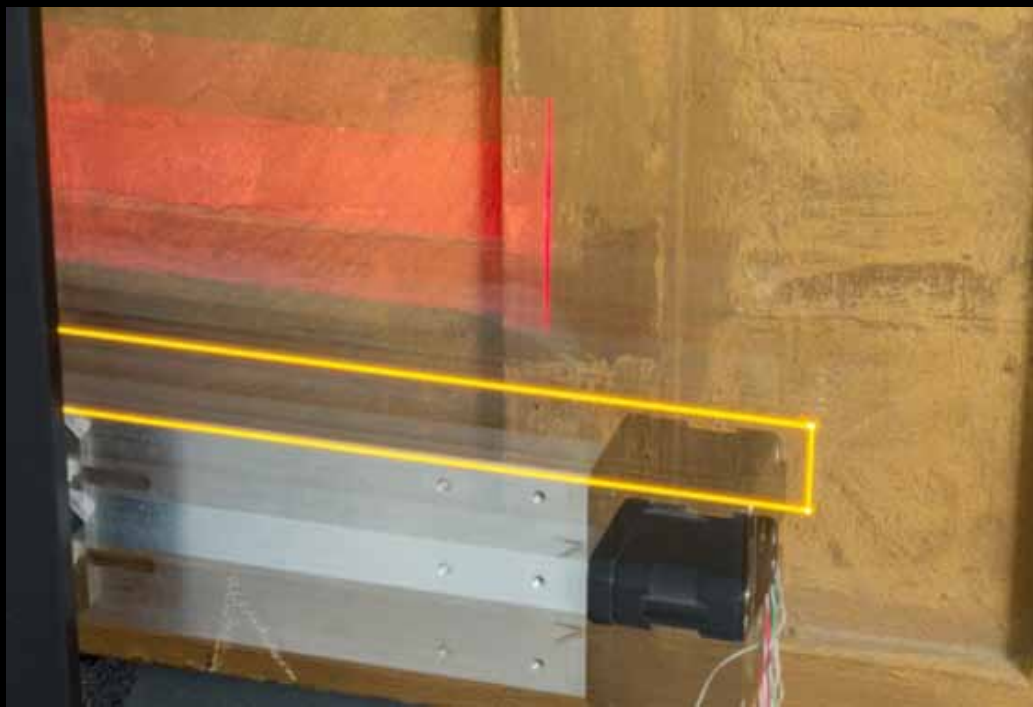
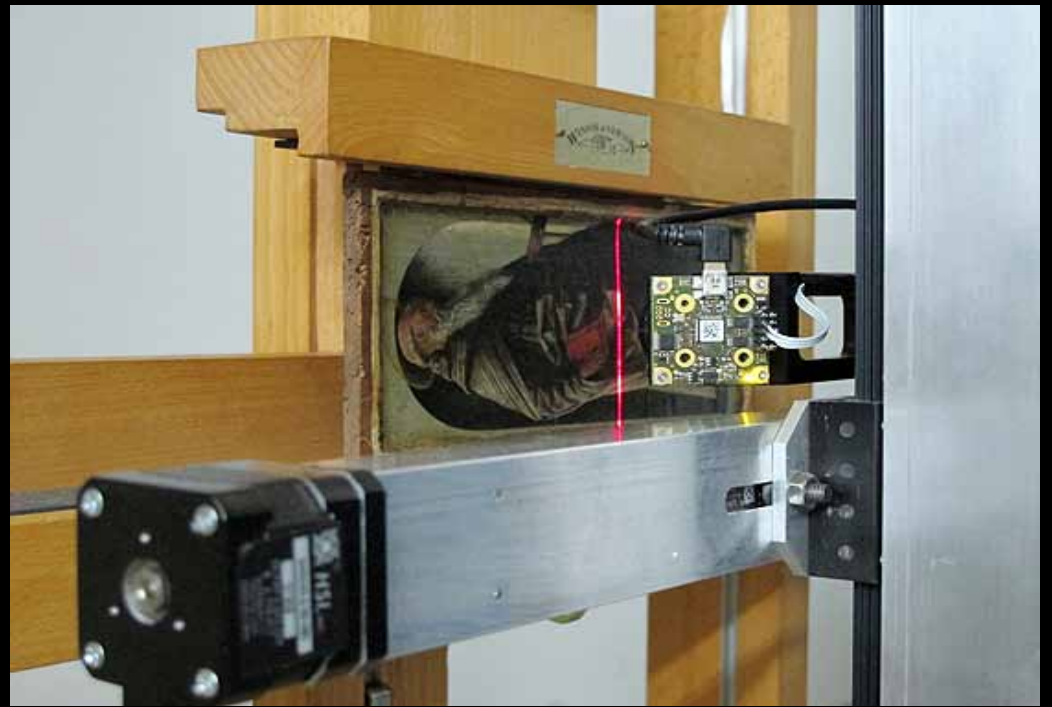


Plaster reproduction of the map  
installed in the Hereford Cathedral



# Polittico Griffoni

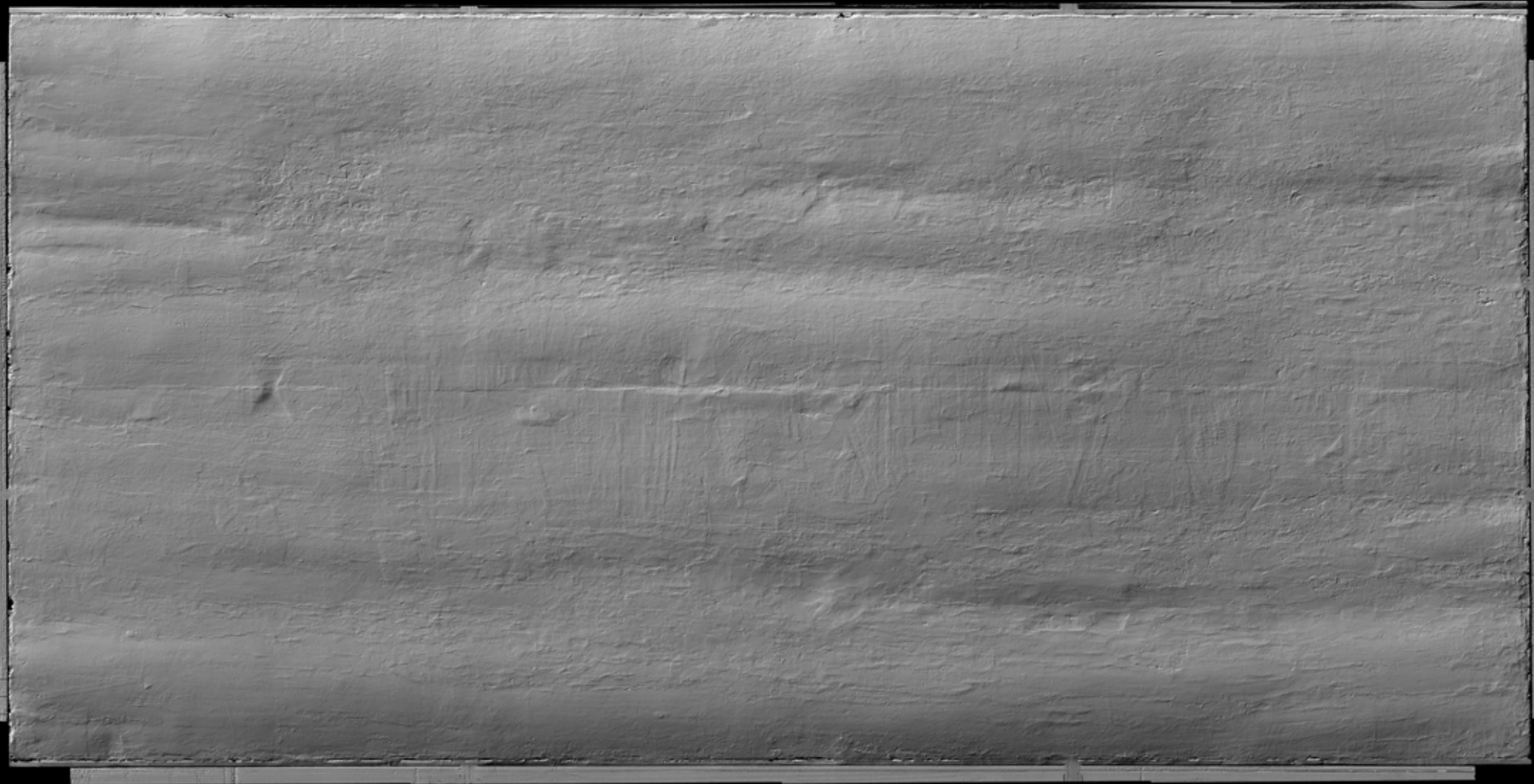




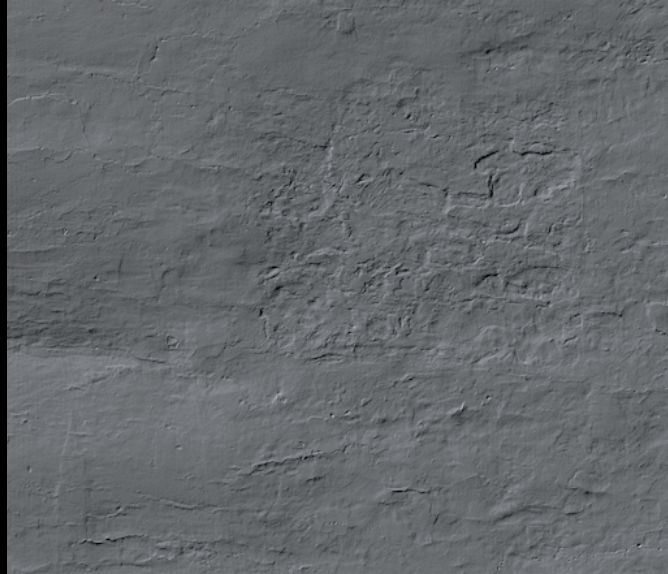
National Gallery of Art, London

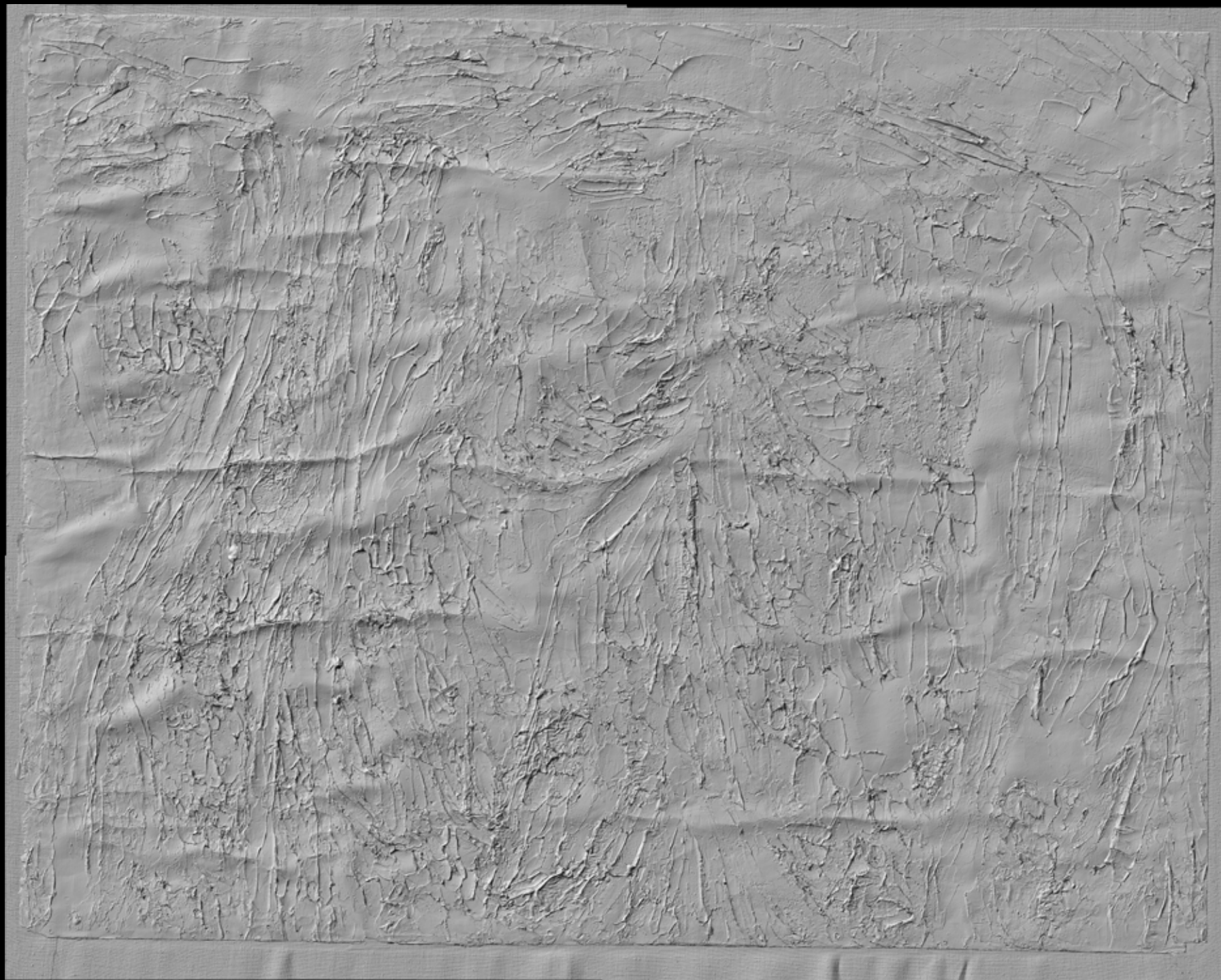
Pinacoteca Vaticana

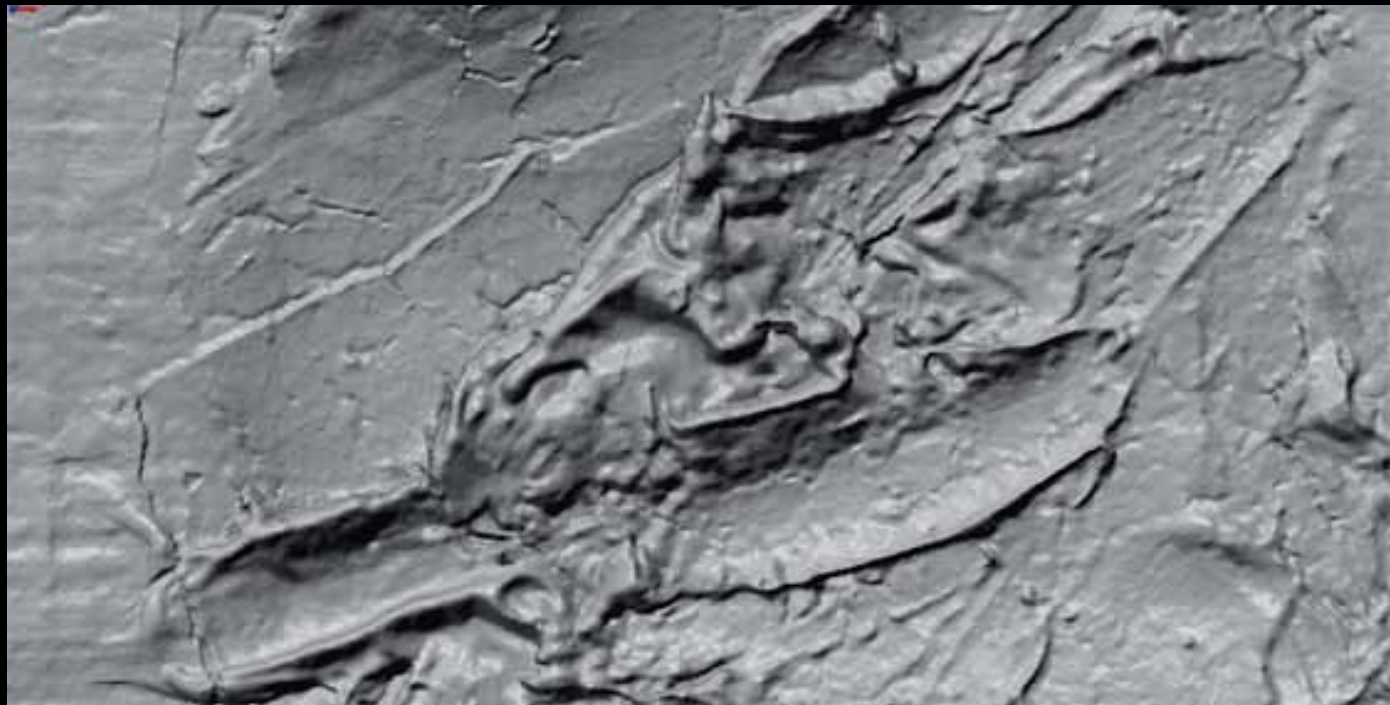
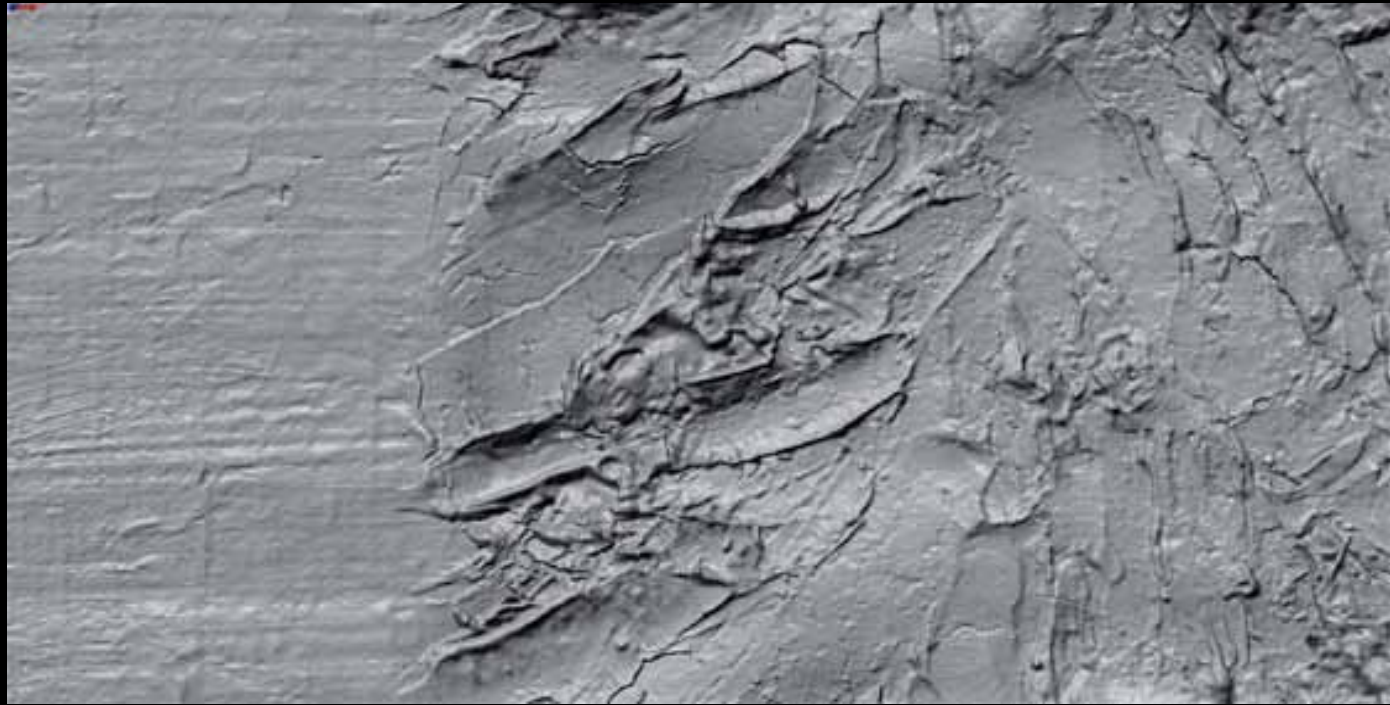
Pinacoteca di Brera, Milan



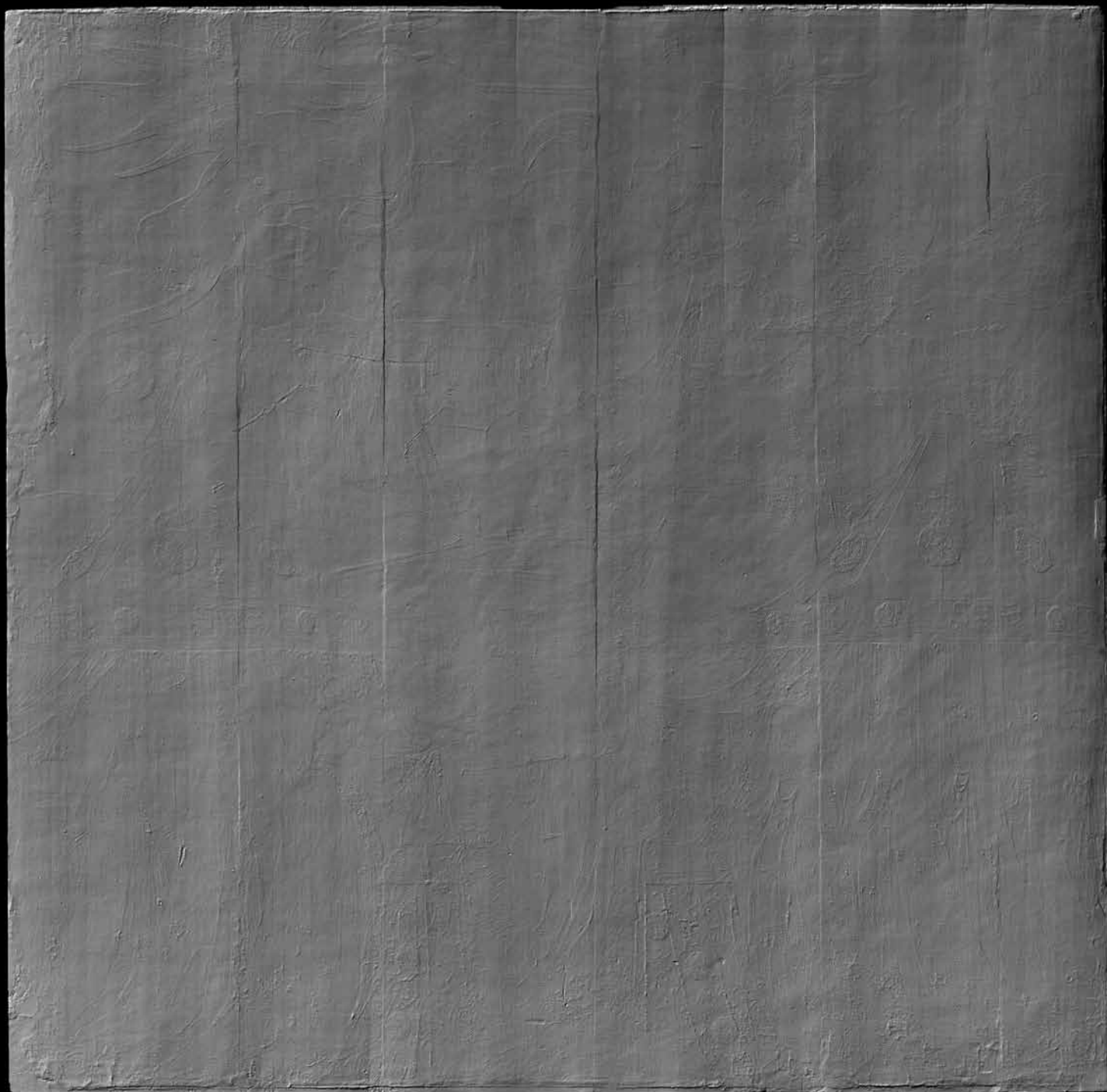


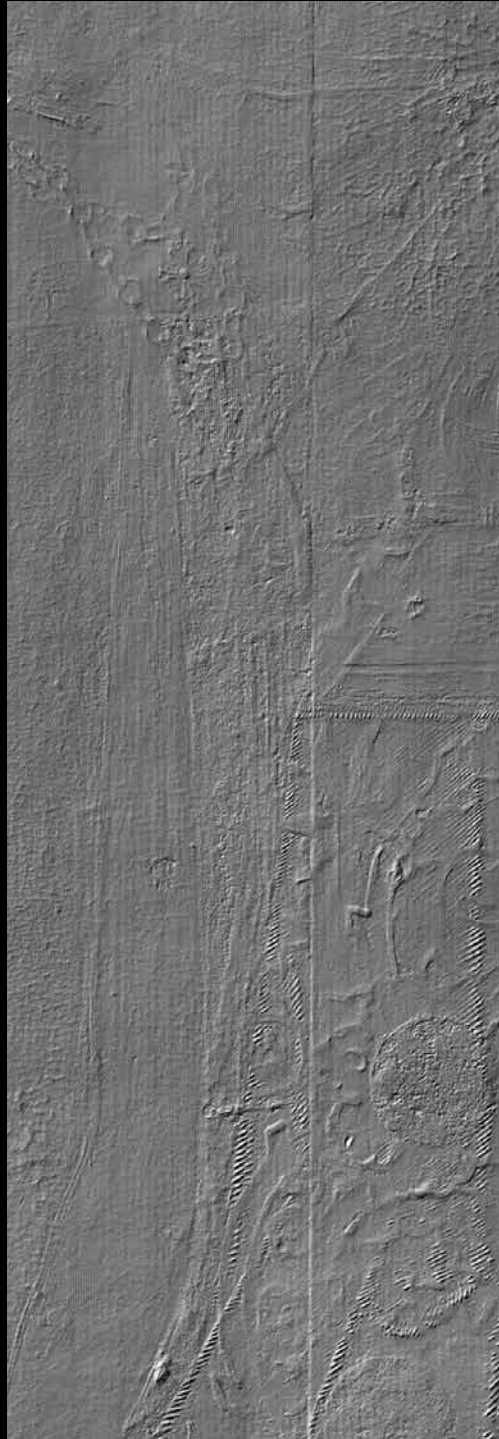












The Gough Map of Great Britain

Raphael drawing

Montorfano

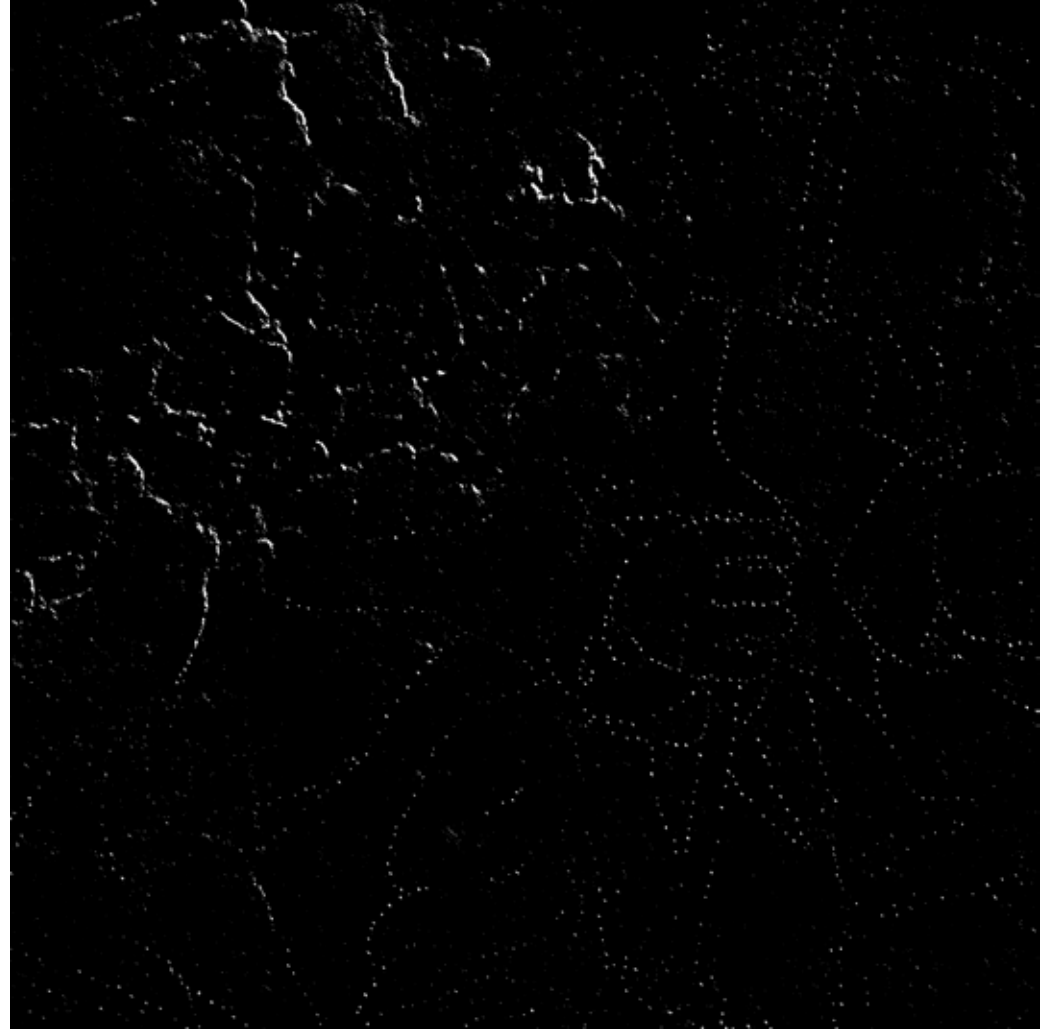
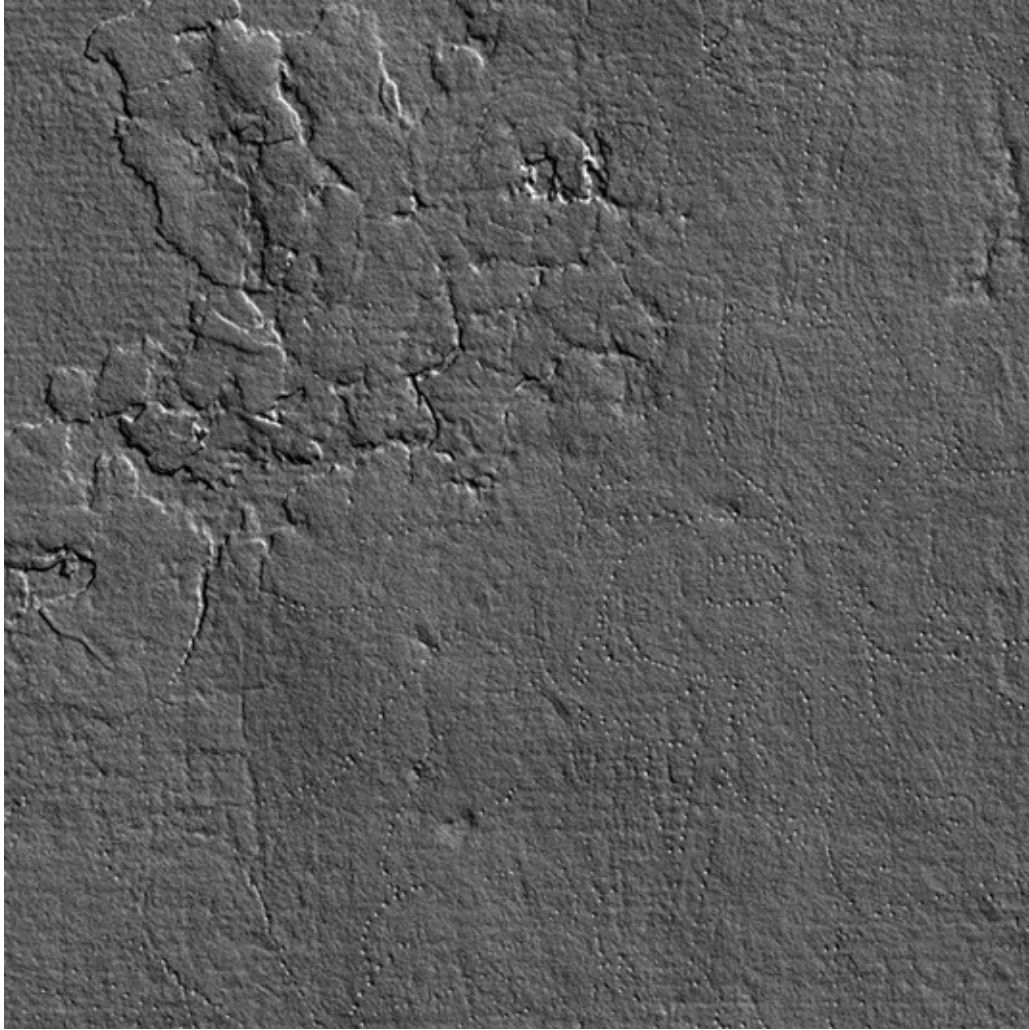
Raphael drawing  
Color / Color + 3D render Overlay





Raphael drawing

3D render / 3D render (adjusted levels)



[factum-arte.com](http://factum-arte.com)