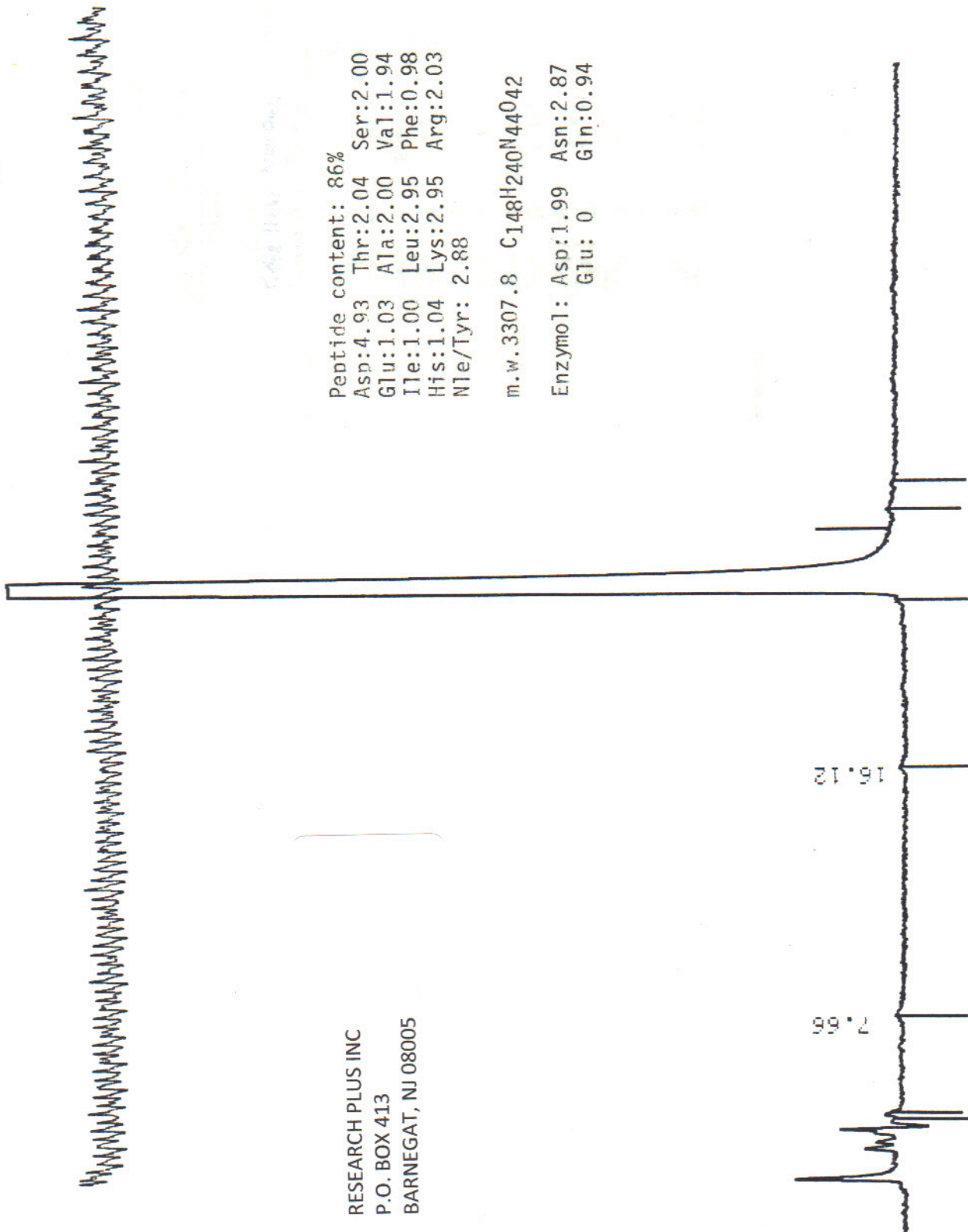


Prod. No. 22-6297-02

17-Nle VIP, acetate

Lot 057-921

His-Ser-Asp-Ala-Val-Phe-Thr-Asp-Asn-Tyr-Thr-
Arg-Leu-Arg-Lys-Gln-Nle-Ala-Val-Lys-Lys-Tyr-
Leu-Asn-Ser-Ile-Leu-Asn-NH₂.acetate



Pentide content: 86%

Asp: 4.93	Thr: 2.04	Ser: 2.00
Glu: 1.03	Ala: 2.00	Val: 1.94
Ile: 1.00	Leu: 2.95	Phe: 0.98
His: 1.04	Lys: 2.95	Arg: 2.03
Nle/Tyr: 2.88		

m.w. 3307.8 C148H240N44O42

Enzymol: Asp: 1.99 Asn: 2.87
Glu: 0 Gln: 0.94

RESEARCH PLUS INC
P.O. BOX 413
BARNEGAT, NJ 08005

----- SYSTEM CONTROLLER CONDITIONS

OPERATOR: _____
DETECTOR 1: UV 210
DETECTOR 2: _____

OPERATION NO. 03
METHOD: 10
PUMP SET: 10
COLUMN: NU300/64

SAMPLE NAME: NLEVIP-39/17-28 EP