

An aerial photograph of a coastal area. The top half shows a large body of water with a sandy beach. A smaller body of water, possibly a lagoon or inlet, is visible in the center, surrounded by a rocky shoreline. The bottom half of the image is a solid red color.

MODAL.

Modal Planning Capability Statement

Modal Planning acknowledges the Traditional Custodians of the lands on which we live and work, particularly the Quandamooka People, on whose Country our business is based.

We pay our respects to Elders past and present, and recognise the enduring connection of Aboriginal and Torres Strait Islander Peoples to land, waters, skies, and community.

We honour the knowledge systems that have shaped these places for tens of thousands of years, and we are committed to listening, learning, and walking together in the spirit of truth and reconciliation.

As a proud Indigenous-owned business, with founding ties to the Kamilaroi Nation, we embed cultural learning and respect across our work, and seek to create space for shared knowledge, inclusive design, and community-led planning outcomes.

Who We Are

Modal Planning is a proud Indigenous-owned consultancy specialising in transport engineering and planning. Our name reflects the principle of modal shift—a purposeful move towards better outcomes for people, places, and systems. Though grounded in transport, we extend this principle of intentional change to infrastructure, service design, and organisational strategy.

We partner with government and industry to navigate the complexity of modern transport systems—shaping networks, policies, and investments that are more inclusive, sustainable, and future-focused. Whether advising on corridor studies, network reviews, or strategic frameworks, we bring a deep understanding of how transport systems operate—and how they can evolve to deliver greater public value.

As a team, we combine technical expertise in transport planning, land use integration, and engineering design with a commitment to equity, behavioural insight, and systems thinking. We support clients to rethink how projects are scoped, how services are delivered, and how investment decisions are made—ensuring alignment with strategic objectives and tangible community benefit.

Our work includes everything from strategic transport plans and infrastructure prioritisation to business case development, access audits, and community engagement. We help organisations move from vision to implementation through collaboration, evidence, and a focus on outcomes that serve all.

At Modal Planning, transformation isn't just what we deliver—it's how we work. And as an Indigenous-owned business, we proudly embed cultural learning, social responsibility, and knowledge-sharing across our practice.

Our Mission

To enhance transport networks and urban mobility in ways that improve community well-being, reduce inequality, and promote environmental and financial sustainability. We achieve this by providing expert, tailored advice that leads to real-world, impactful outcomes.

Our Vision

To be a leading socially focused enterprise in transport and advisory services—one that actively champions equity, accessibility, and long-term impact. We aim to shape a future where mobility is not a privilege, but a right—ensuring that all people, regardless of circumstance, can access opportunities and participate fully in their communities.

We will achieve this by reinvesting in community-driven initiatives, supporting the development of future leaders, and embedding inclusive thinking into every aspect of our work. Through genuine knowledge-sharing and long-term, values-aligned partnerships, we seek to drive transformational change in how organisations and systems plan, deliver, and connect with the people they serve.

Michael Abbott-Jard

Director of Engineering and Planning

Michael is a RPEQ-accredited Transport Engineer and qualified Access Consultant with over 25 years’ experience across public transport strategy, corridor planning, and inclusive infrastructure design. He has led complex projects for local and state governments, delivering practical outcomes grounded in community need and long-term network performance. Michael brings strong capability in integrated planning, data-driven problem solving, and stakeholder engagement. His past roles at Translink, Logan City Council, and consultancies have shaped a deep understanding of how transport, land use, and accessibility interact. With a background in graphic design, he excels at visual communication and systems thinking. As the founder of Modal Planning, Michael is committed to delivering transport solutions that prioritise equity, sustainability, and shared public value.

Rina Abbott-Jard

Director of Business Services

Rina is a behavioural strategist and change facilitator with nearly 20 years of experience spanning corporate, government, and social sectors. Holding a degree in organisational psychology, she brings specialist capability in workshop design, stakeholder engagement, and behaviour change—skills that directly support Modal Planning’s work in transport planning and community engagement. Rina has delivered successful change programs across a range of industries, using co-design, behavioural insight, and facilitation techniques to shape more inclusive and effective outcomes. Her work helps bridge the gap between technical solutions and lived experience, supporting projects that aim to shift travel choices, increase accessibility, and build public trust. At Modal Planning, Rina plays a key role in guiding engagement strategies, facilitating workshops, and embedding human-centred thinking into transport planning and policy.

Lizél Herholdt

Principal Transport Planner

Lizél is a transport planning specialist with over 35 years’ experience across government and consultancy roles in both South Africa and Australia. She brings a depth of expertise in strategic transport planning, integrated land use policy, corridor and precinct planning, and infrastructure prioritisation. Lizél has successfully led major projects including the Gautrain Rapid Rail Link and Logan’s Integrated Local Transport Plan (Way2Go), and is widely respected for her ability to coordinate across agencies, engage with stakeholders, and translate complex policy into practical, staged delivery. Her approach is grounded in equity, sustainability, and systems thinking—ensuring that transport networks support long-term growth and community wellbeing. At Modal Planning, Lizél leads technical strategy and engagement on planning projects, helping clients move from vision to implementation with clarity and confidence.

Christopher Maddox

Principal GIS Analyst

Christopher is a highly experienced spatial analyst with more than 19 years in GIS, data integration, and transport-related modelling. He has worked across local government, research, and consulting sectors, building custom geospatial tools that inform better infrastructure planning, environmental assessments, and disaster response. Christopher was the technical lead behind Logan’s award-winning Growth Model and Flood Portal, and has delivered 3D visualisations, spatial equity analyses, and live dashboards that support transparent, evidence-based decision-making. His expertise includes FME, ArcGIS, Python automation, and scenario-based modelling for transport and land use planning. At Modal Planning, Christopher ensures that spatial intelligence underpins every phase of project delivery—from growth forecasting and accessibility mapping to environmental overlays and transport corridor studies—turning complex datasets into actionable insight.

Our Expertise Matrix



Specialist



Skilled

	Public Transport Service Planning	Public Transport Infrastructure Planning	Active Transport	Corridor & Precinct Planning	Traffic Engineering	Stakeholder and Community Engagement	Land Use Integration and Policy Alignment	Spatial Analysis & Data Visualisation	Accessibility Auditing and Inclusive Design	Behavioural Change and Mode Shift Strategy
Michael	Specialist	Specialist	Skilled	Specialist	Specialist	Skilled	Skilled	Skilled	Specialist	Skilled
Rina						Specialist				Specialist
Lizél		Skilled	Specialist	Skilled		Specialist	Specialist	Skilled	Skilled	Skilled
Christopher	Skilled		Skilled	Skilled			Specialist	Specialist		

CORRIDOR PLANNING

We plan transport corridors that serve all users—not just vehicles—by integrating walking, cycling, public transport, freight, and general traffic into a coherent and balanced design. Using movement and place methodologies, we assess corridor function, user needs, and land use context to guide investment in infrastructure that supports the efficient and safe movement of people and goods. Our approach includes intersection performance analysis, accessibility audits, and network role definition, ensuring that each corridor reflects both its local place value and strategic transport role. The result is a staged, evidence-based framework that delivers functional, inclusive, and future-ready corridors.

INFRASTRUCTURE PLANNING

Modal supports transport infrastructure planning from early visioning to concept development and investment readiness. We focus on creating infrastructure that is inclusive, place-sensitive, and scalable—whether it’s a public transport interchange, active transport spine, park-and-ride facility, or multimodal hub. Our approach draws on user-first design, traffic engineering, accessibility standards, and urban integration to ensure projects are both technically robust and socially valuable. We also align infrastructure concepts with funding frameworks, business case needs, and long-term governance models.

ACCESS CONSULTING

We provide expert access consulting services to ensure public infrastructure and transport systems are inclusive, safe, and usable by all. Our work spans audits, concept reviews, and design advice aligned with relevant Australian Standards (such as AS 1428) and best-practice universal design principles. We help clients identify and remove barriers, improve usability, and support equitable access for people with disability, older adults, and other users with diverse needs. Our goal is to support environments that promote dignity, independence, and inclusion from planning through to delivery.

SPATIAL ANALYSIS

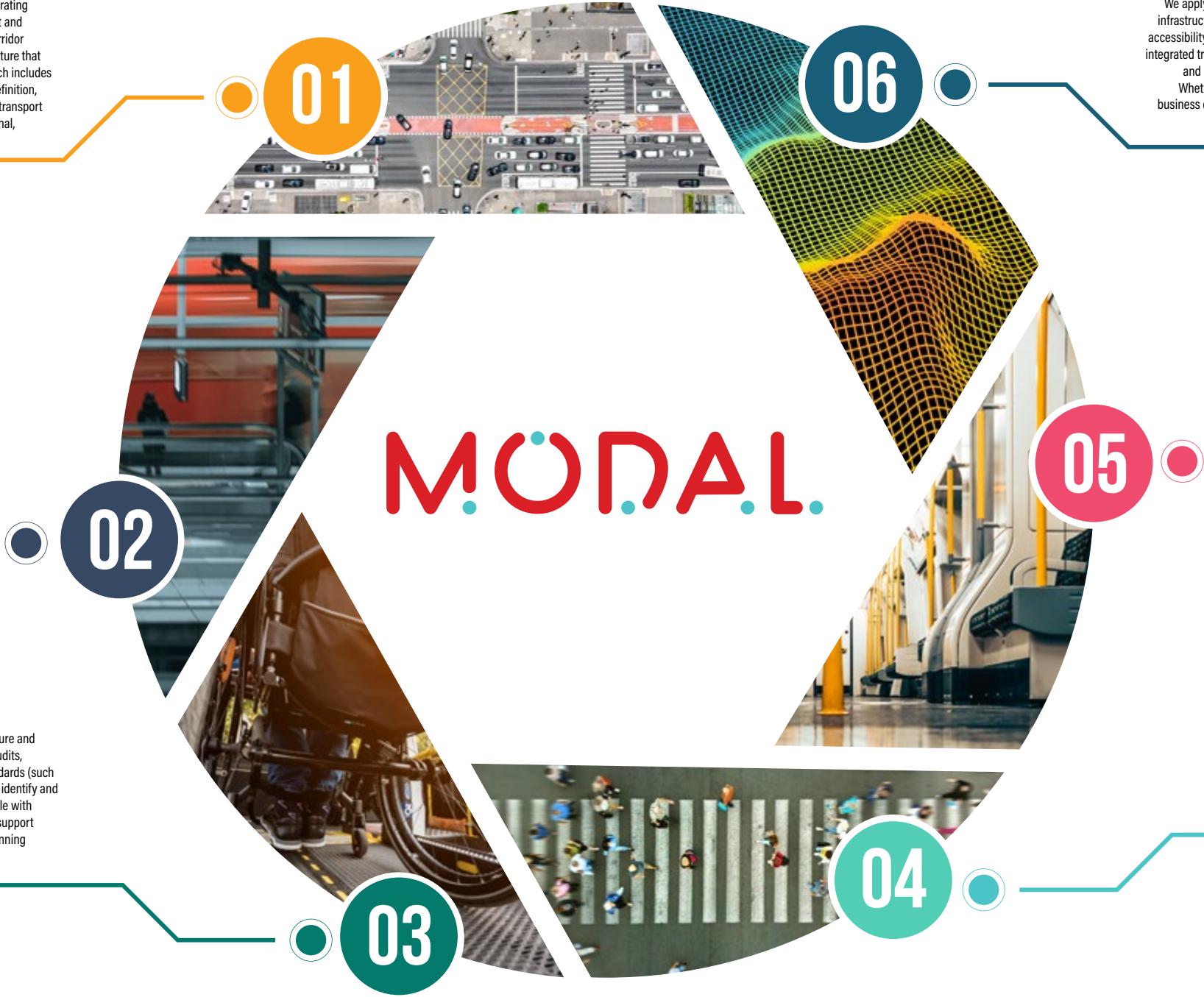
We apply advanced GIS and spatial modelling to inform better transport planning, infrastructure prioritisation, and land use decision-making. Our capabilities include accessibility and catchment mapping, equity analysis, demographic forecasting, and integrated transport-environment overlays. We develop automated tools, dashboards, and custom models that make complex data clear, defensible, and actionable. Whether informing a corridor study, guiding public engagement, or supporting business case development, our spatial analysis turns static datasets into dynamic insights that shape better outcomes on the ground.

PUBLIC TRANSPORT

We help plan, review, and optimise public transport networks to improve accessibility, efficiency, and user experience. Our approach combines service load analysis, community engagement, and operational insight to shape networks that reflect current demand and support future growth. We’ve worked across urban and regional contexts—from school bus alignment to regional network reform—helping agencies deliver services that prioritise equity and connect people with opportunity. We also provide implementation support, including service design.

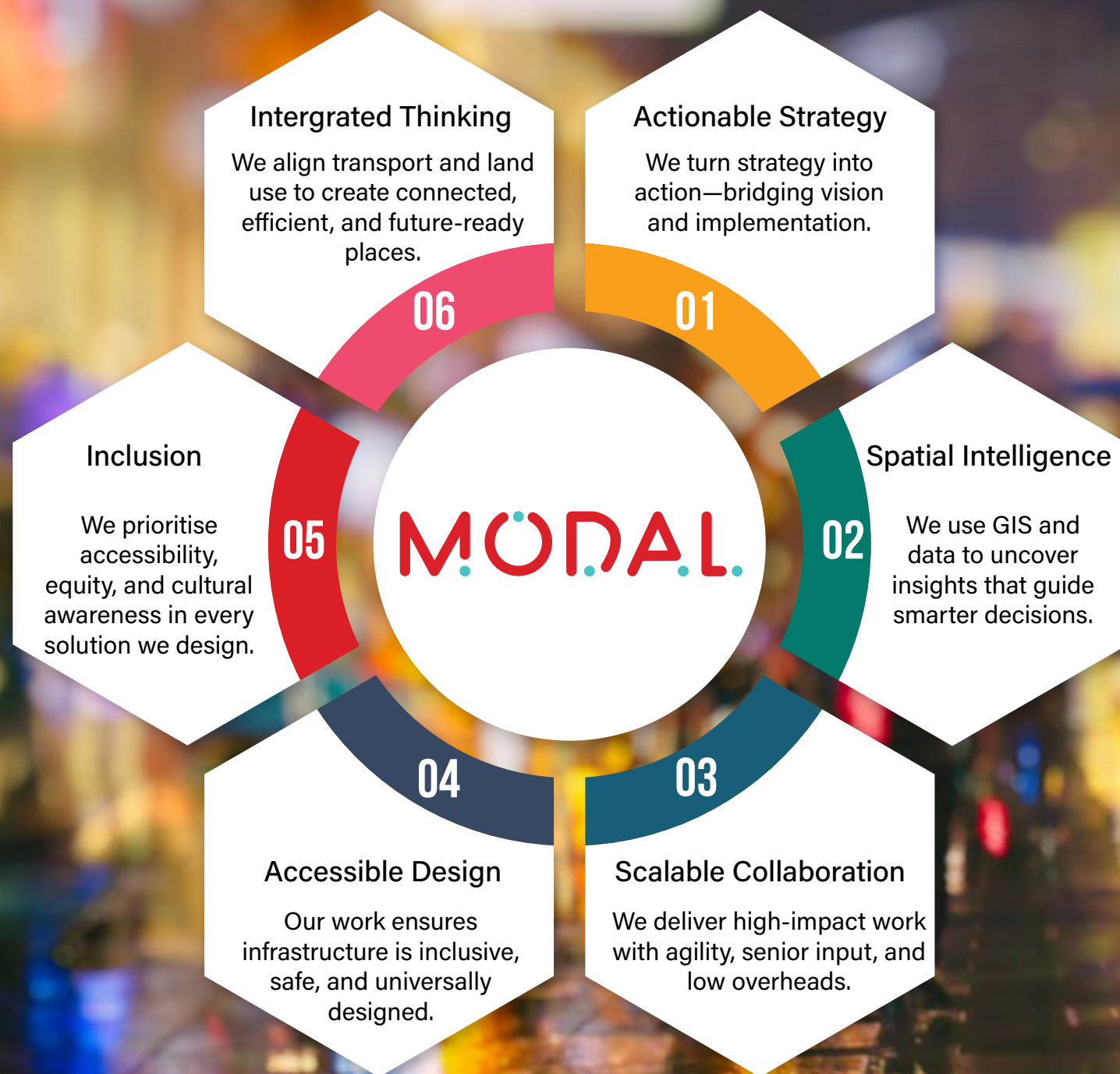
ACTIVE TRANSPORT

We plan walking, cycling, and micromobility networks that support real shifts in how people move—whether on foot, by bike, or using e-scooters and e-bikes. Our work includes audits, strategy development, and infrastructure planning that prioritises safety, accessibility, and integration with land use and public transport. We also support the planning of mobility hubs and first/last-mile connections to encourage uptake and support healthier, more sustainable travel choices. Every project considers how infrastructure, place design, and behavioural drivers interact—ensuring active travel is not only possible, but preferred.



What We Do - Points of Difference

MODAL



Key Projects & Experience

Modal Planning is a specialist transport and accessibility consultancy established to deliver practical, inclusive, and forward-thinking solutions to public and community infrastructure challenges. As a recently founded start-up, our company is built on the deep experience of its senior team.

The following project summaries represent work delivered by Modal's personnel while working in other organisations. They reflect the calibre of technical leadership, problem-solving, and innovation that our team brings to every engagement — now delivered through Modal Planning with the same rigour, responsiveness, and community-focused values.

State Government Projects

Bus Facilities Review – Statewide Infrastructure Assessment

Translink | 2022–2023

A statewide appraisal of bus stops to assess accessibility against the Disability Standards for Accessible Public Transport (DSAPT). Modal's lead planner developed a scalable framework to consolidate data, classify priority sites, and produce a program of works with cost and delivery estimates for future investment planning.

Ross River Road Passenger Transport Study

Translink | 2021–2022

A corridor study for one of Queensland's busiest regional bus routes, involving demographic analysis, service planning, and infrastructure testing. The outcome was a significant reduction in projected infrastructure costs and a smarter, more targeted solution that aligned with growth forecasts and improved operational performance.

Townsville University Hospital Walking Network Plan

TMR | 2022

This plan addressed pedestrian connectivity around a major health precinct, combining site audits and lived experience input to identify infrastructure gaps. The result was a prioritised upgrade program supporting safer, more inclusive access.

Commonwealth Games Freight Strategy – Network Impact Assessment

TMR South Coast | 2018

This project supported freight movement planning for the 2018 Commonwealth Games, ensuring delivery continuity while minimising disruption to public transport and event operations. Work included spatial analysis of network pinch points, route mitigation planning, and integration with Games-time transport and security strategies.

Sugarlands Bus Station – Options Assessment and Planning

Translink | 2014

This project explored options for upgrading or relocating the Sugarlands Bus Station in Bundaberg to improve accessibility, safety, and network integration. The work involved operational assessment, passenger flow analysis, and review of infrastructure and land use constraints. The study identified feasible interventions to enhance the station's performance as a key regional hub, balancing cost, user experience, and long-term growth.

Local Government Projects

Logan City Bus Network Review

Logan City Council | 2019–2020

A comprehensive review of Logan's bus network to identify service gaps and underperforming areas. The project guided network realignment and investment priorities, supporting accessibility and population growth across the city.

Bus Stop Accessibility Audits – DSAPT Compliance

Logan City Council | 2019 & 2021

Audits of bus stop infrastructure across Logan assessed compliance with DSAPT standards. Field inspections and data scoring informed a prioritised upgrade schedule, helping embed accessibility into Council's planning framework.

Logan Growth Model – Population and Employment Forecasting Tool

Logan City Council | 2017

An award-winning FME-based model projecting future population, employment, and infrastructure needs across Logan. Built from over 7000 geospatial processes, the tool supports long-term planning and investment and was recognised for its innovation and impact.

Surfers Paradise to Chevron Island Green Bridge – Corridor Planning and Options Assessment

City of Gold Coast | 2017

This early-stage planning project assessed alignment options for a new green bridge linking Chevron Island to Surfers Paradise. It included spatial analysis, land use integration, and connectivity assessment to guide location and design decisions. The bridge supports long-term goals for walkability and active transport across the Nerang River.

Meadowbrook Access Strategy – Integrated Transport and Land Use Planning

Logan City Council | 2012

This strategy set a long-term vision for improving transport access in the Meadowbrook–Loganholme precinct. It focused on integrating active and public transport with major health, education, and employment centres. Key initiatives included planning for Loganlea Station relocation and delivery of the Greenlink active transport corridor.



MODAL.

www.modalplanning.com