



Brigham City

GENERAL PLAN UPDATE 2024



PREPARED BY
Downtown Redevelopment Services, LLC
Ravenna, Ohio | Park City, Utah

table of
contents.

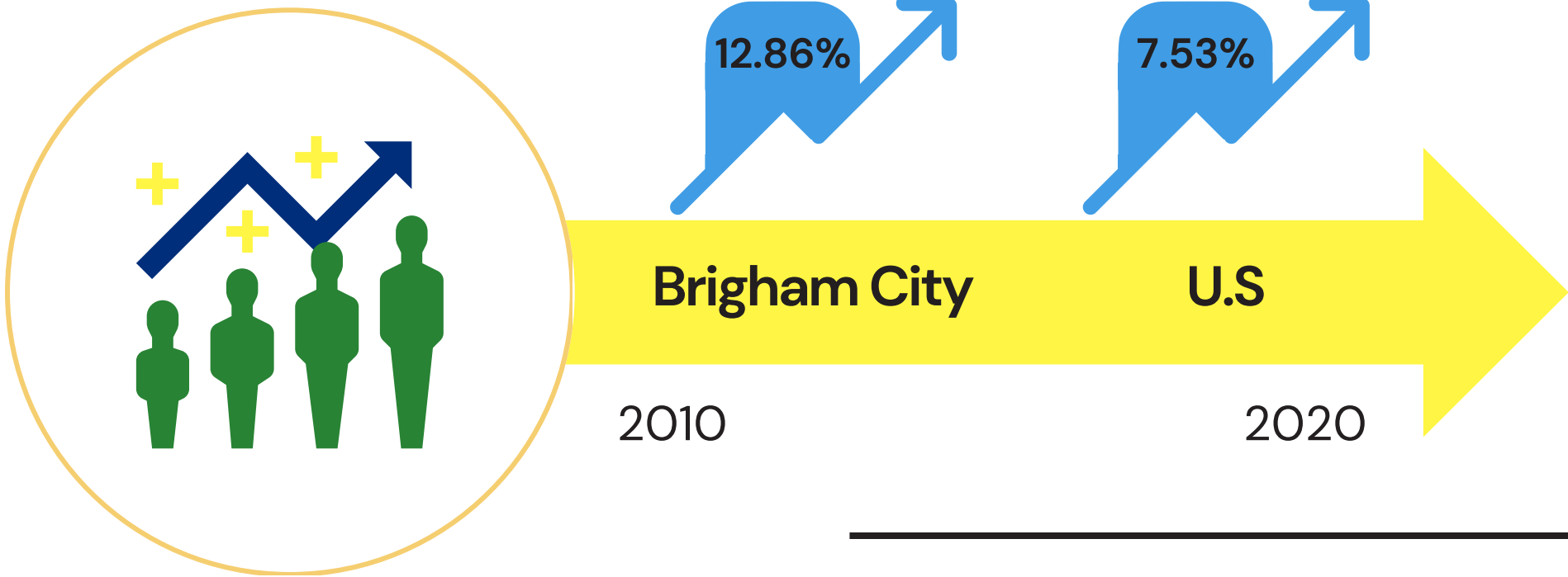
- 01 Existing Conditions
- 02 Public Input Synopsis
- 03 Draft Recommendations
- 04 Land Use Maps
- 05 Implementation Strategies
- 06 Appendix

**THANK YOU TO OUR
PARTNERS**

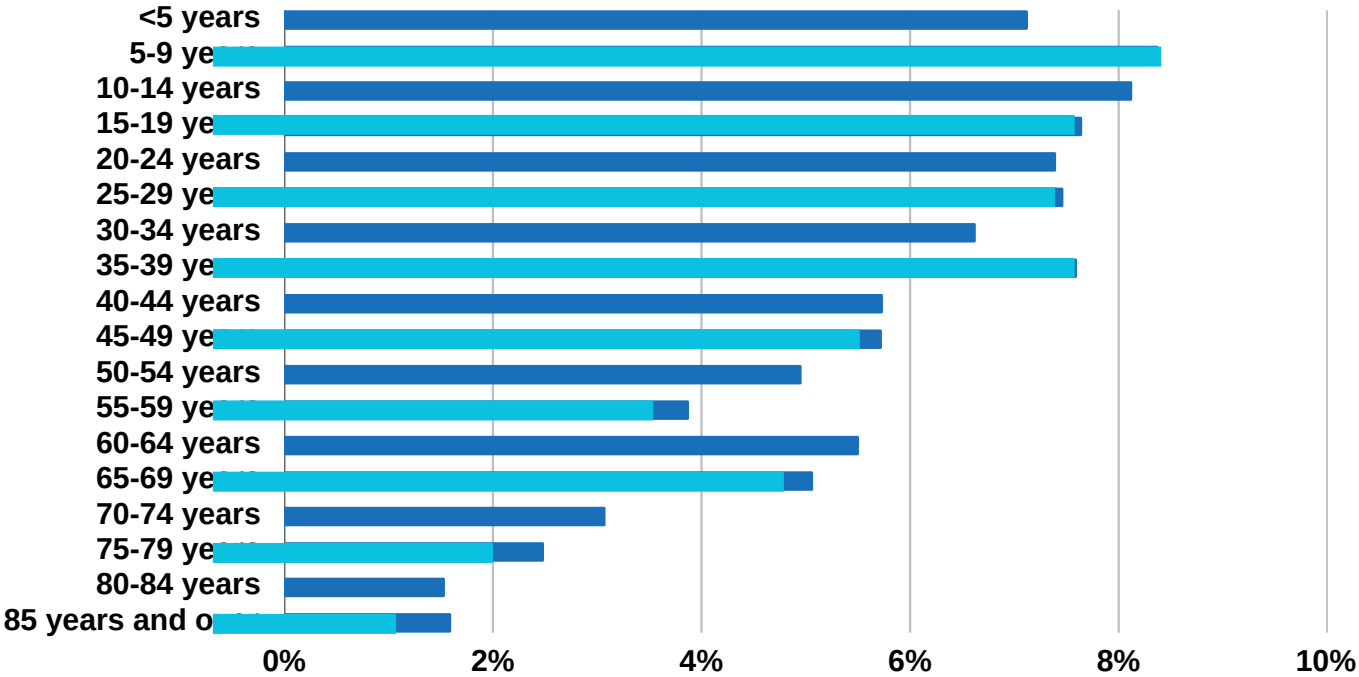




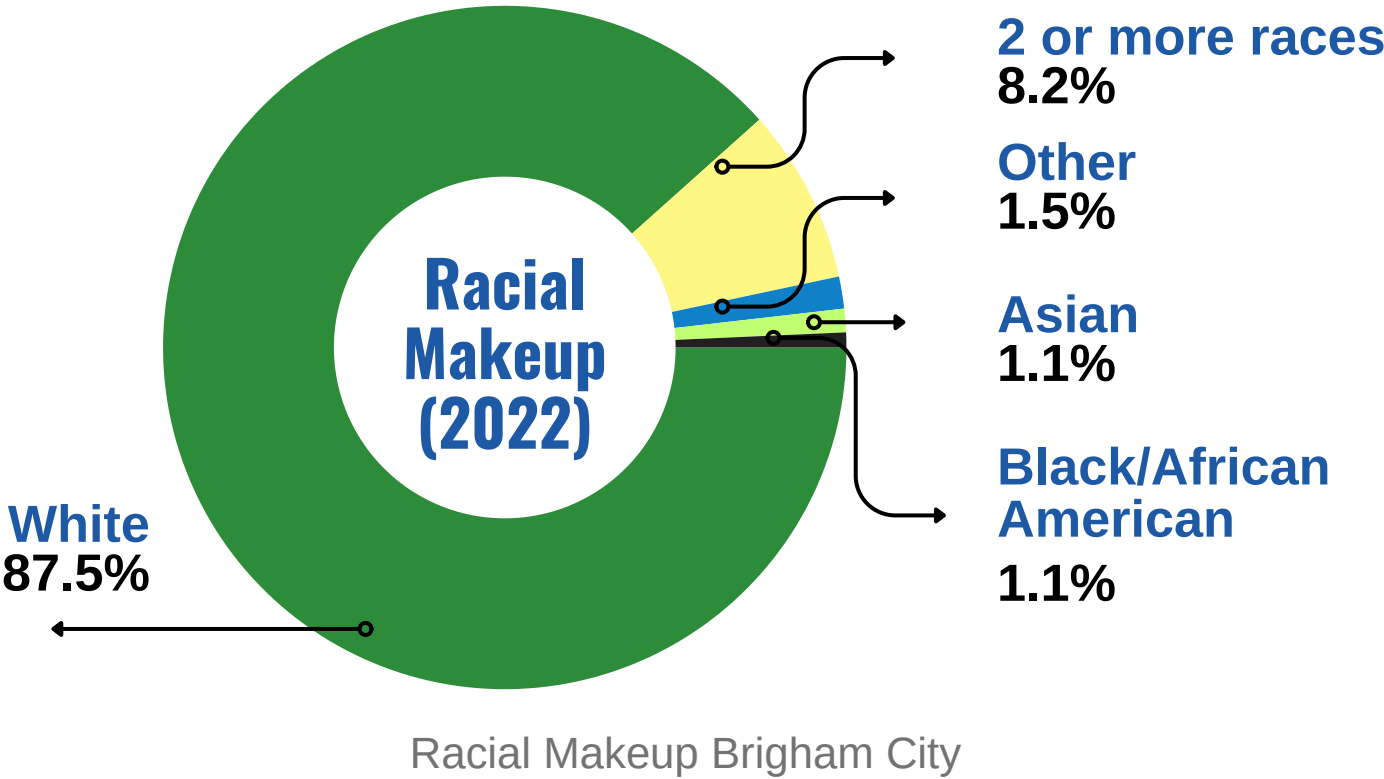
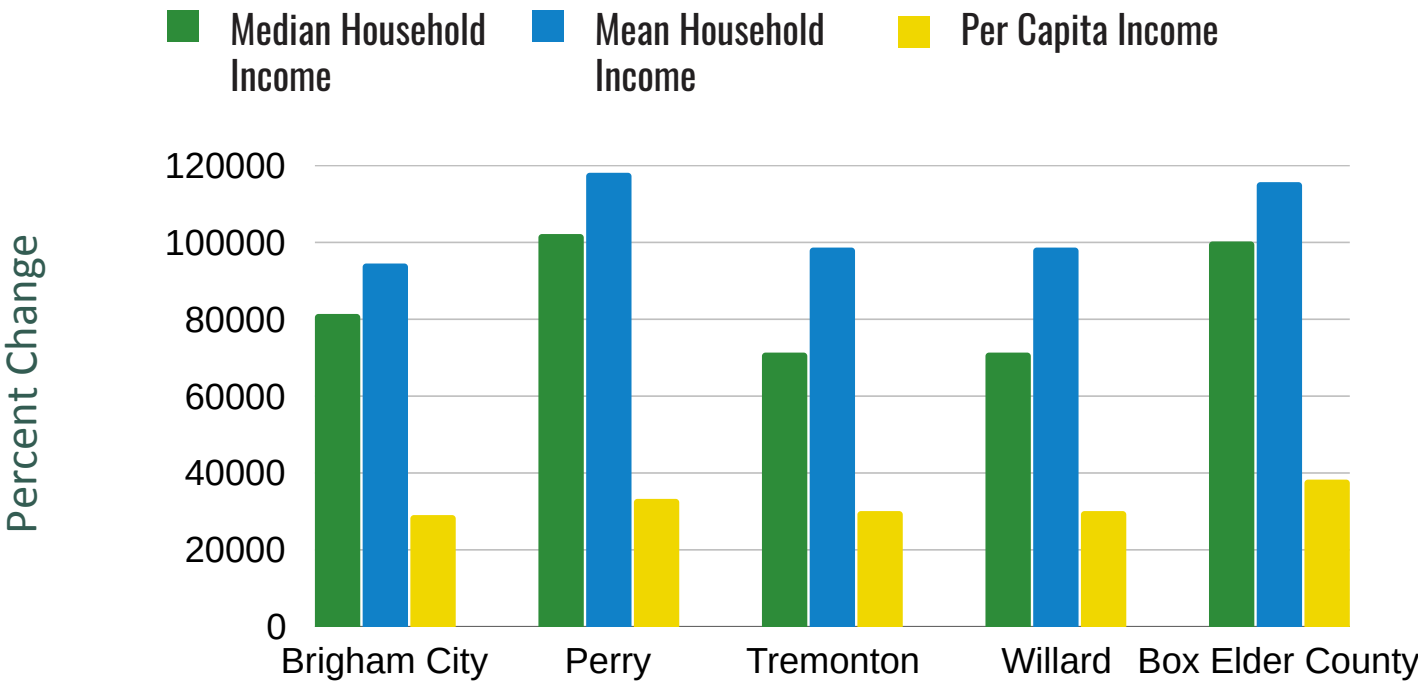
Existing Conditions



Resident Age Distribution (2022 ACS 5-Year Estimate)



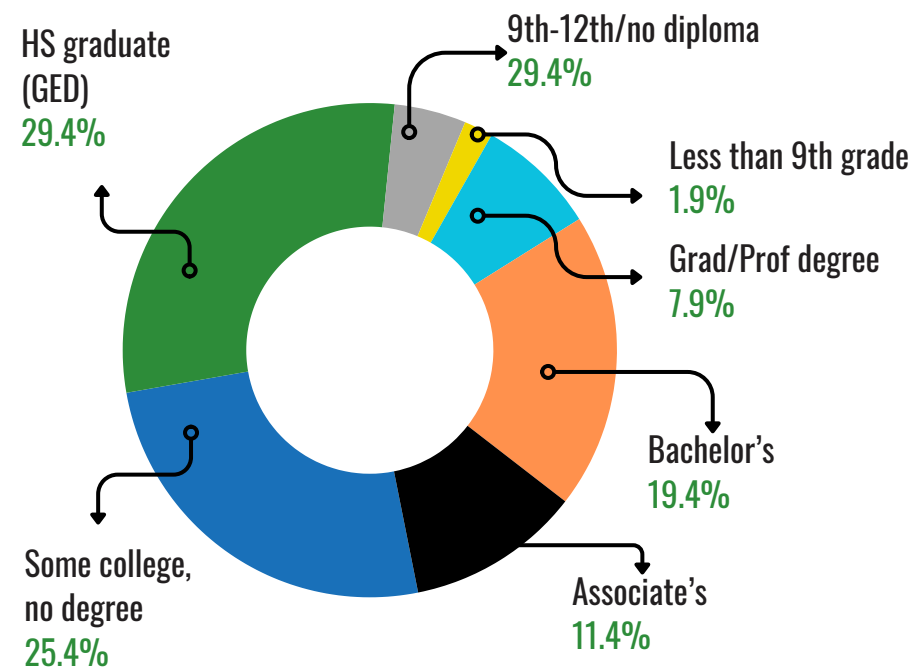
Income Comparisons (ACS 2022)



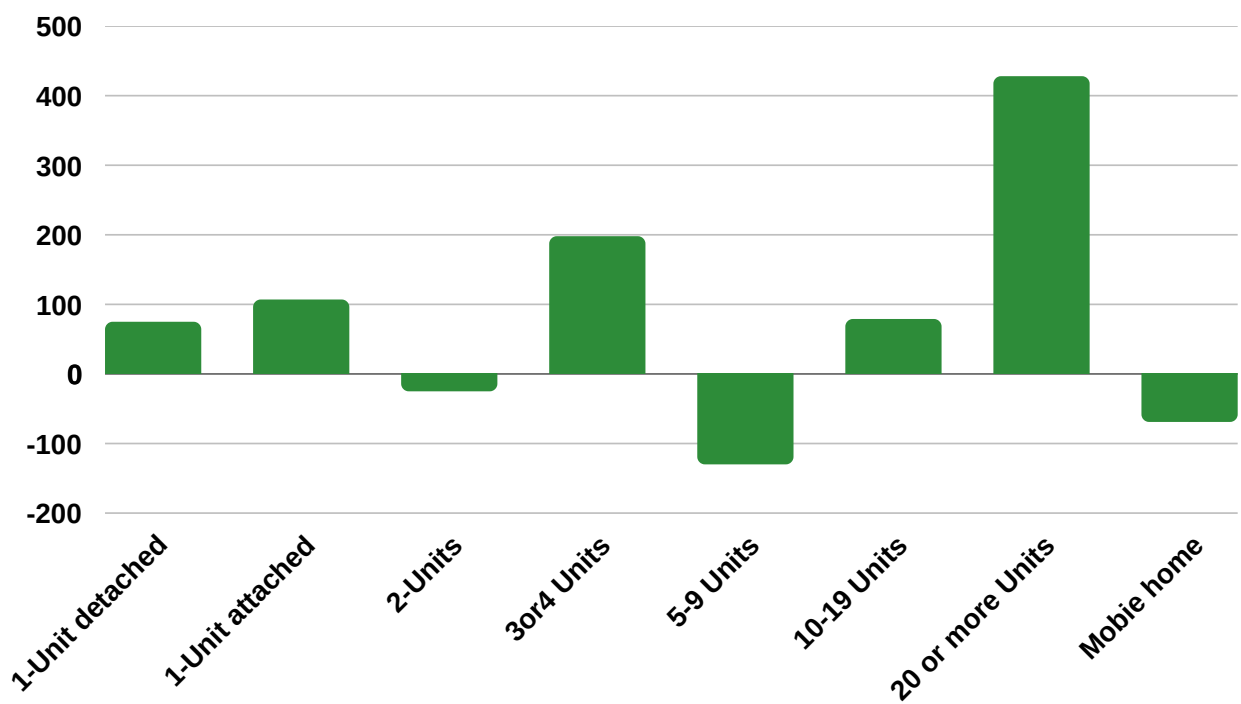


Existing Conditions

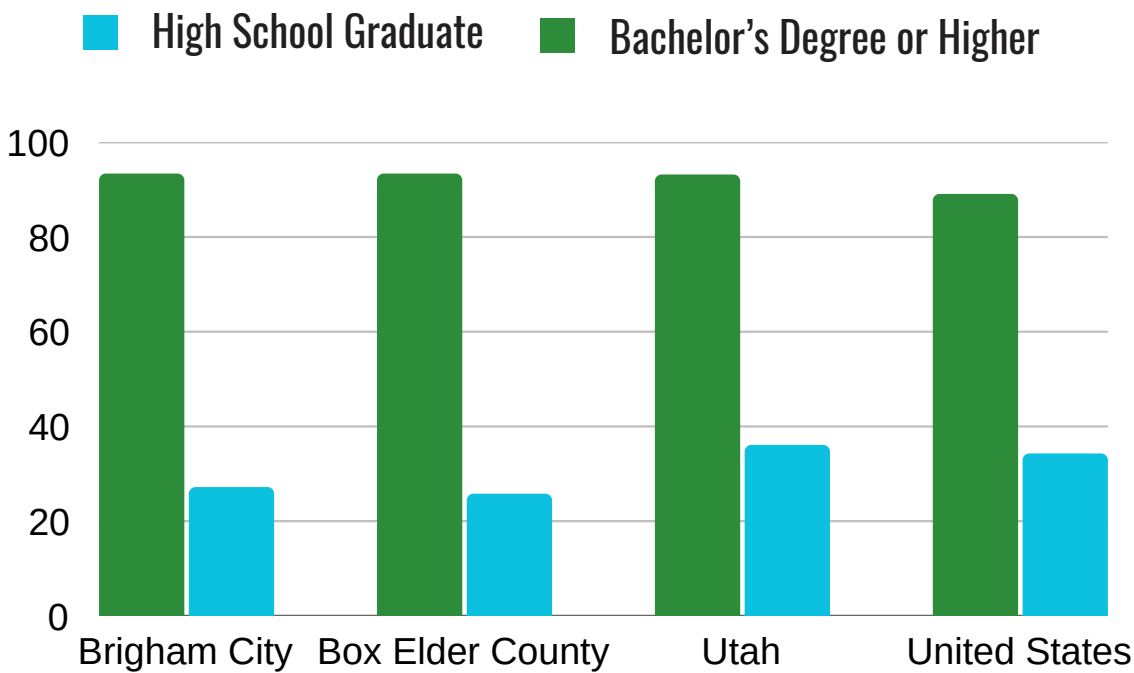
Brigham City's Educational Attainment (2022)



Units in Structure Change (ACS 2012 and 2022)



Educational Attainment Comparison (2022)





Public Engagement Synopsis

THE PROCESS

An extensive public outreach program was integral to Brigham City's General Plan update. Throughout the public engagement process, overarching themes emerged and the plan began to take shape, capturing residents' desires for what a future Brigham City should become.

Outlined below are the topics for the survey



Gathering Spaces



Traffic



Architecture



Brigham City's Identity



Housing



Traffic

SURVEY RESULTS

THE RESULTS

Outlined below are some of the assets Brigham City residents identified as most important to them:

69.9%
like the City's
Quality of Life



41.9%
want higher
density
housing near
commercial
centers



906
Responses for
Survey 1



83.4%
leave the City
for Dining
options



69.6%
want improved
retail &
services



72
Responses for
Survey 2



89.7%
said the city
faces traffic
issues



91%
said the city
has
congestion on
major roads



66.8%
said more
signals are
needed



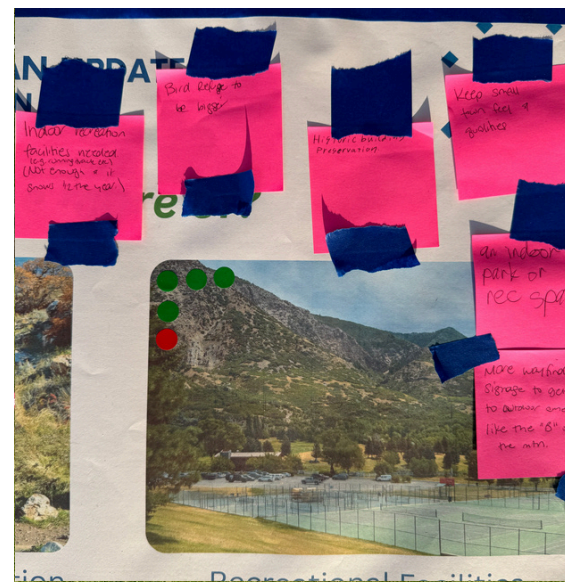
**Council
Workshops were
held to further
the development
of the
Comprehensive
Plan focusing on:**



Brigham City's
Vision & Values



Future Land Use
Map



RECOMMENDATIONS



ECONOMIC DEVELOPMENT RECOMMENDATIONS

- Foster job creation of family-supporting opportunities for current and future residents and increase the median income of Brigham City residents.
- Grow and diversify the city revenue to continue quality municipal services and address the issues raised in the General Plan without disproportionately increasing tax rates or demand for public services.
- Support targeted industrial development to diversify the economic base and create stable employment opportunities.
- Promote economic diversification and innovation to ensure long-term economic resilience.



LAND USE RECOMMENDATIONS

- Ensure efficient land use and thoughtful integration of transportation infrastructure to support Brigham City's growth and sustainability goals.
- Promote new developments that contribute positively to the community's aesthetics and functionality while preserving Brigham City's heritage.
- Promote smart growth that respects and enhances Brigham City's natural resources and unique character.
- Promote growth through diversification of housing stock typologies to achieve affordable housing for all.



NATURAL RESOURCES RECOMMENDATIONS

- Conserve Brigham City's water resources and maintain water quality.
- Promote energy efficiency, modern building standards, and urban forestry.
- Protect and enhance Brigham City's natural habitats and biodiversity.



RECOMMENDATIONS



PARKS AND RECREATION RECOMMENDATIONS

- Improve connectivity to local parks and recreation facilities.
- Ensure all existing and new parks and recreation facilities meet ADA requirements.
- Develop a Long-Term City-Wide Parks Master Plan.
- Protect and enhance existing natural characteristics of Brigham City within the parks.
- Provide equal access to local parks and recreation facilities.
- Enhance and maintain public space in the core of downtown.
- Assure that the Brigham City Trail System meets public needs and expectations.



HAZARDOUS AREAS RECOMMENDATIONS

- Enhance Brigham City's preparedness for natural hazards that the community is most at risk of.
- Promote community awareness and preparedness for natural hazards that the community is most at risk of.
- Protect the hillsides within the City boundary from potentially harmful development.



SENSITIVE AREAS OR SITES RECOMMENDATIONS

- Preserve and enhance Brigham City's historical and cultural heritage.
- Conserve and manage Brigham City's ecological and wildlife resources.
- Protect Brigham City's scenic and architectural assets.



DOWNTOWN REVITALIZATION RECOMMENDATIONS

- Preserve historic sites
- Encourage diverse range of businesses
- Prioritize Main Street
- Enhance transit stops

RECOMMENDATIONS



HOUSING RECOMMENDATIONS

- Ensure diverse and affordable housing options to meet the needs of all residents.
- Support sustainable and resilient housing development.
- Promote community-oriented housing development that supports Brigham City's character and quality of life.



COMMUNITY DESIGN RECOMMENDATIONS

- Maintain the rural, small-town atmosphere while promoting public design that embraces and enhances these qualities.
- Enhance community design to foster social interaction and reflect the local culture.
- Promote and maintain a safe, functional, and well-connected community.



AGRICULTURE RECOMMENDATIONS

- Sustain the agricultural heritage of the city while accommodating responsible growth and development in designated areas.
- Foster community involvement and connection with agricultural practices to continue the city's farming legacy.
- Promote sustainable farming practices that conserve natural resources, improve soil health, and reduce environmental impacts.

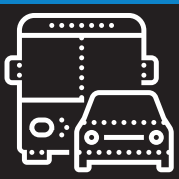


RECOMMENDATIONS



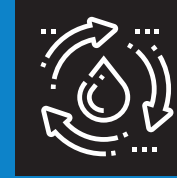
UTILITY INFRASTRUCTURE RECOMMENDATIONS

- Assess investments in the community required to continue a high-level of service in the culinary water, wastewater, storm water, and irrigation systems.
- Continue assessments of growth-related costs for utilities and adjust impact fees as necessary.
- To ensure utility services continue to meet the needs of existing and new residential, commercial, and industrial developments, perform an annual review and prioritization of infrastructure projects within the City's Capital Improvements Plan.
- Identify funding sources, budget for, and complete infrastructure projects as identified in the Capital Improvements Plan for the year planned.



TRANSPORTATION RECOMMENDATIONS

- Provide adequate and safe streets and sidewalks to meet the needs of existing and new residential, commercial, and industrial developments.



WATER USE AND PRESERVATION RECOMMENDATIONS

- Continue to efficiently use the City's existing water supply, reducing the City's need for additional water supplies.

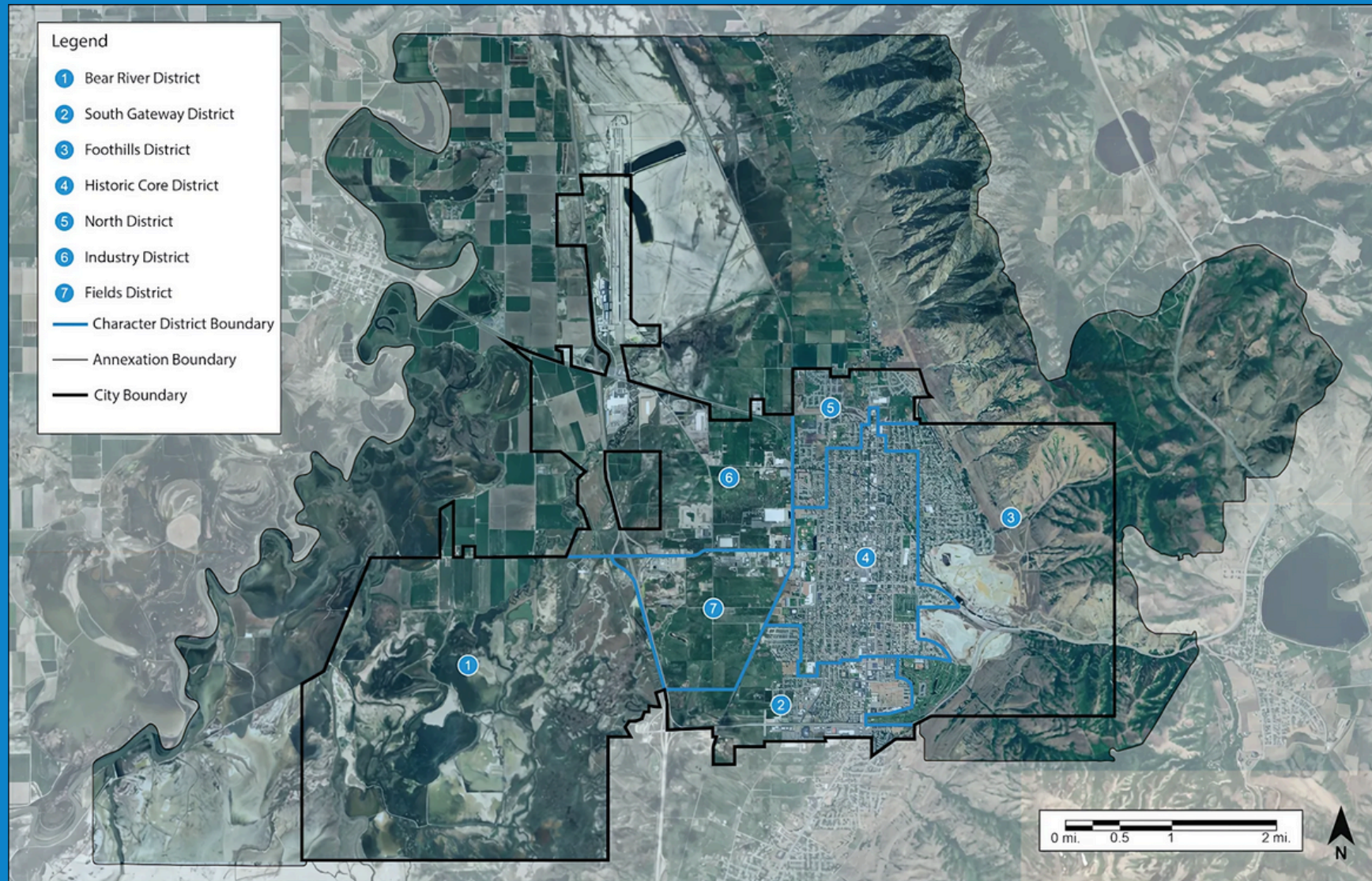




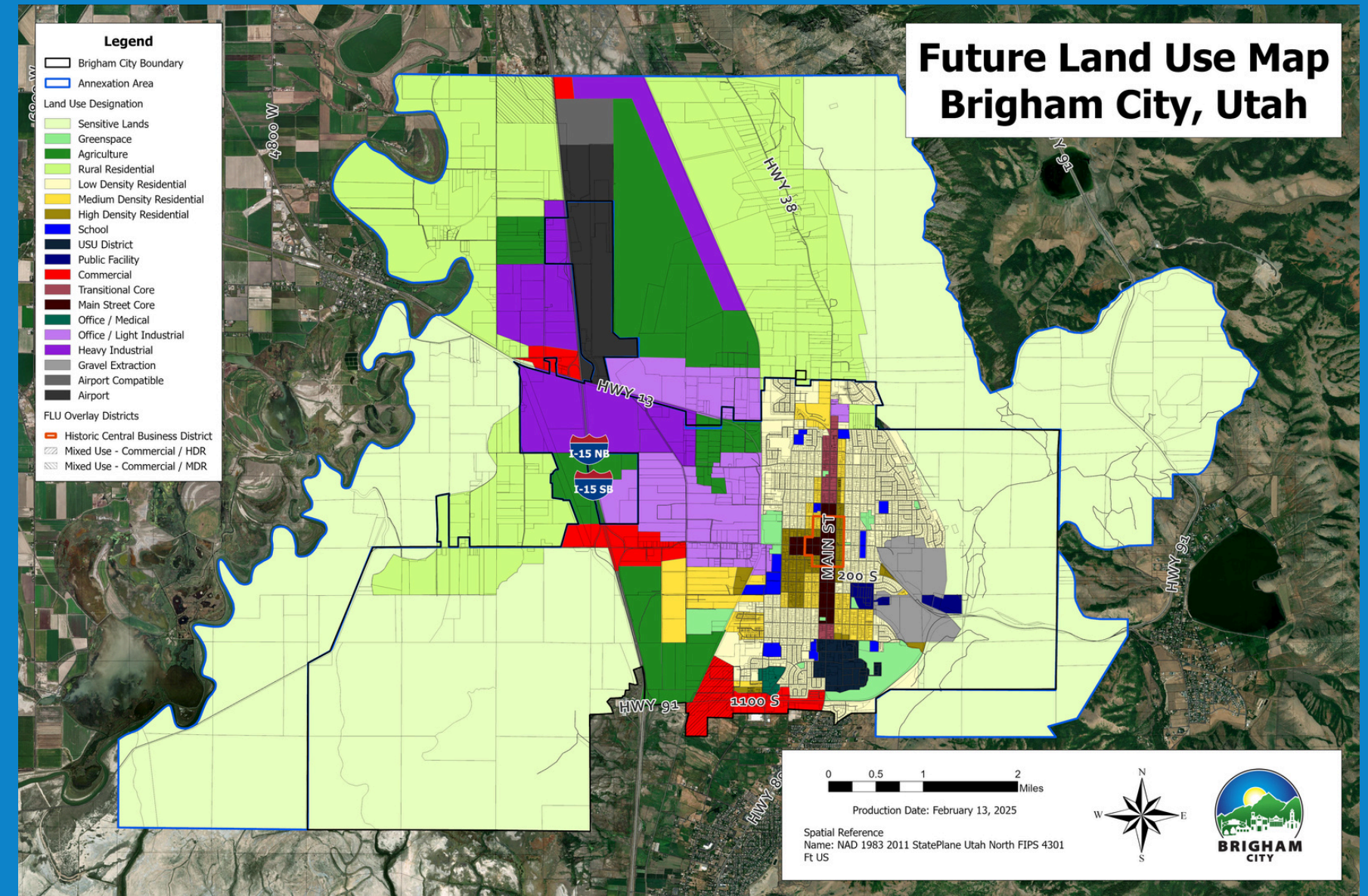
Land Use Strategies



Charater Districts Map



FUTURE LAND USE MAP





Brigham City

GENERAL PLAN UPDATE 2024



PREPARED BY
Downtown Redevelopment Services, LLC
Ravenna, Ohio | Park City, Utah