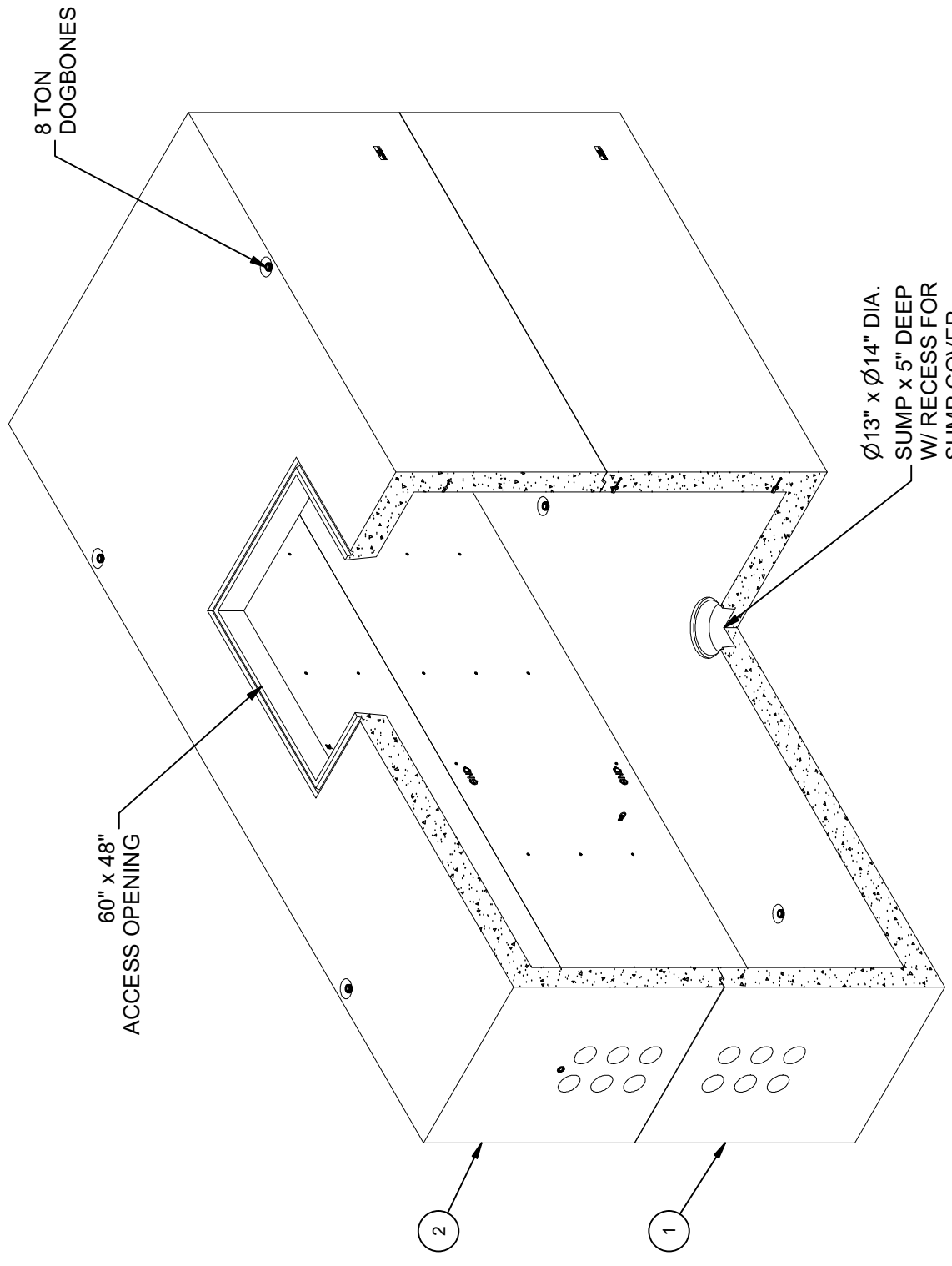


# BILL OF MATERIALS

- DESIGN NOTES**
- DESIGNED IN ACCORDANCE WITH AASHTO H-20-44 TRAFFIC BRIDGE LOADING USING 6,000 PSI COMPRESSIVE STRENGTH CONCRETE AND 60,000 PSI YIELD STRENGTH ASTM A-706 STEEL REINFORCEMENT PER CALCS. #34736.
  - MINIMUM EXCAVATION SIZE: 10'-2" X 22'-2" X DEPTH REQ'D.
  - FOR COMPLETE DESIGN AND PRODUCT INFORMATION CONTACT JENSEN PRECAST.
  - VAULT TO BE PLACED ON A MIN. 6" BASE OF CRUSHER RUN FOR EASE OF INSTALLATION AND EVEN LOAD DISTRIBUTION.
  - CONCRETE MIX USED IN POURING THIS PRODUCT SHALL USE FLY ASH AS AN ADMIXTURE.
  - ALL PARTS TO BE STENCILED: MFG DATE / JOB NUMBER / PRODUCT ID / WEIGHT.
  - STENCIL "GRD" IN RED LETTERS
  - EXTERIOR SURFACES OF STRUCTURE(S) SHALL BE COATED WITH CoatMasters CM7007 IMRAE.

ITEM	UNIT QTY	QTY	PART NUMBER	DESCRIPTION	MASS (lb)
1	1	1	100009278	Vault 96240x57 Rect. Bottom Section Terminators Sump SDGE 34003-01 Transmission Vault	45917
2	1	1	100009279	Vault 96240x57 Rect. Top Section 60"x48"C Terminators SDGE 34003-01 Transmission Vault	43026
3	1	4	100022758	GROUND ANCHOR BRACKET KIT HALO HB304R	
4	1	4	100004320	BOLT HEX 1/2-13 UNC 1 304SS	
5	25.500 gal	25.500 gal	100038043	COATING WATERPROOFING CoatMasters CM7007 IMRAE	
6	1.000 ul	1.000 ul	100005749	SEALANT JOINT BUTYL RUBBER ASTM C-990 AND M198 CS-102 1IN EQUIV X14.5FT PER BOX 118FT	



ISO VIEW

**LIFTING NOTES**

FIELD INSTALLATION: PLANT DEMOLING: MINIMUM HANDLING CONCRETE STRENGTH F<sub>c</sub> = 5500 PSI RIGGING EQUALIZER REQUIRED TO EQUALIZE LOAD TO 4 LIFTING POINTS WITH A SLING ANGLE BETWEEN 60° AND 90°

BURY DEPTH:	0.0' - 4.0' to Top
WATER LEVEL:	3.0'
DESIGN SPEC:	ASTM C857, ACI 318
AGENCY:	SDGE
APPROX. WEIGHT:	88951.55 Lbs
LOADING SPEC:	A-16 (AASHTO HS20-44)
AGENCY SPEC:	34003-01 Transmission Vault

REVISION HISTORY		
REV	DESCRIPTION	DATE
B-2	INITIAL RELEASE	3/31/2022

APPROVED

DESCRIPTION: Utility Vault 96240 Layout Assembly SDGE 34003-01 Transmission Vault

REV: B-3

SHEET: 2

1 OF 2

PART NUMBER: 100009277 LAYOUT REVIEW

DRAWN BY: D. Mejia

CREATED: 7/18/2019 MODIFIED: 3/31/2022

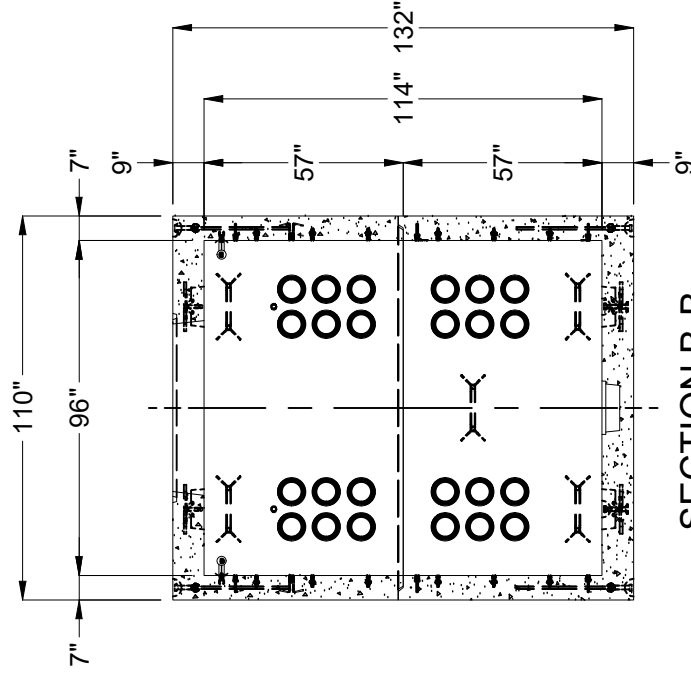
**JENSEN PRECAST** EST. 1968

WWW.JENSENPRECAST.COM

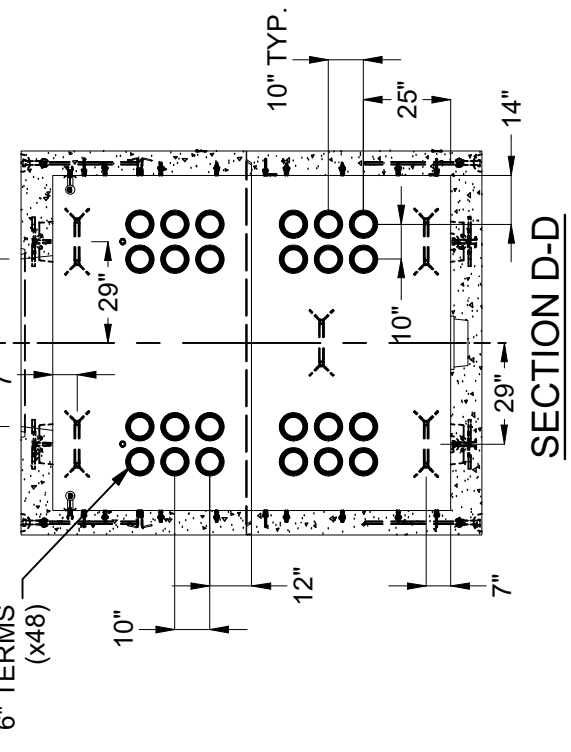
©2022 Jensen Precast. All rights reserved. All materials appearing as Jensen Precast documents and the like are proprietary work product and are protected under U.S. copyright and other laws. Unless in conjunction with business conducted with Jensen Precast, any use of Jensen Precast work product without express, written consent is prohibited, and recipient is prohibited from distributing any and all work product to non-approved third parties under penalty of civil action.

100027277.rpt

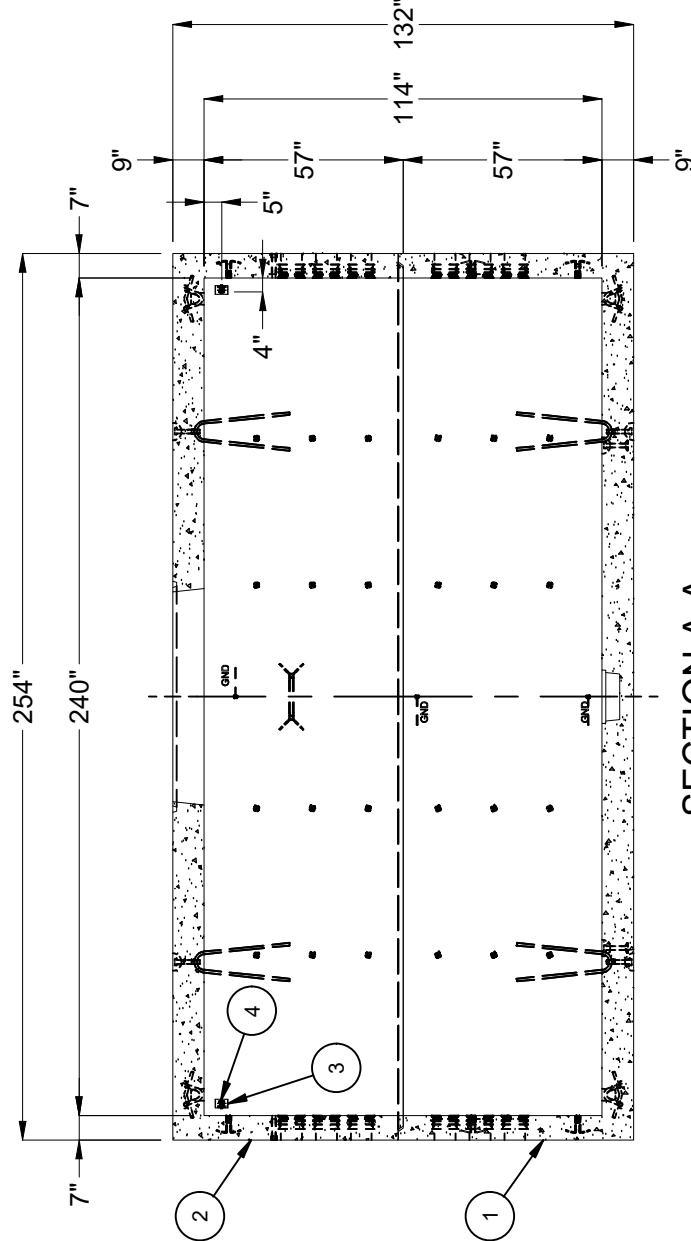
100009277.rvt



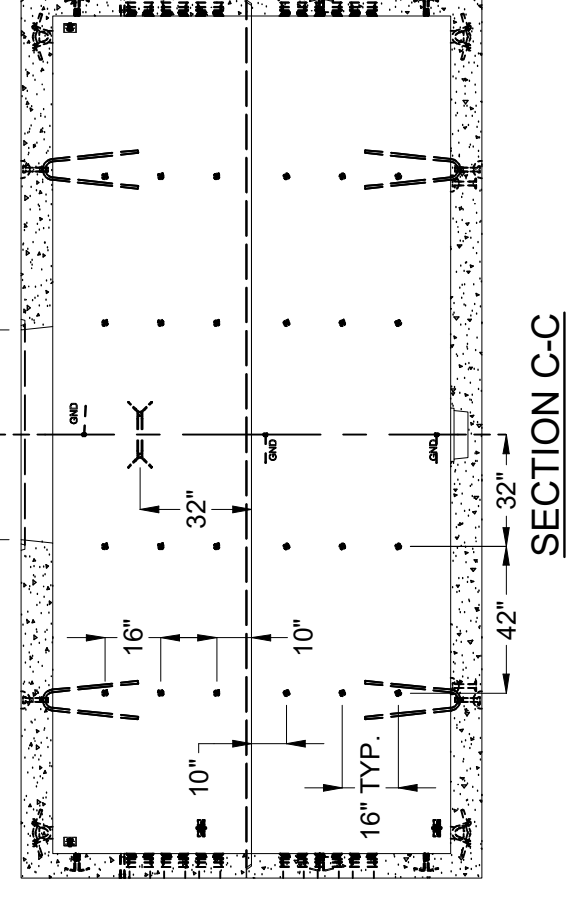
SECTION B-B



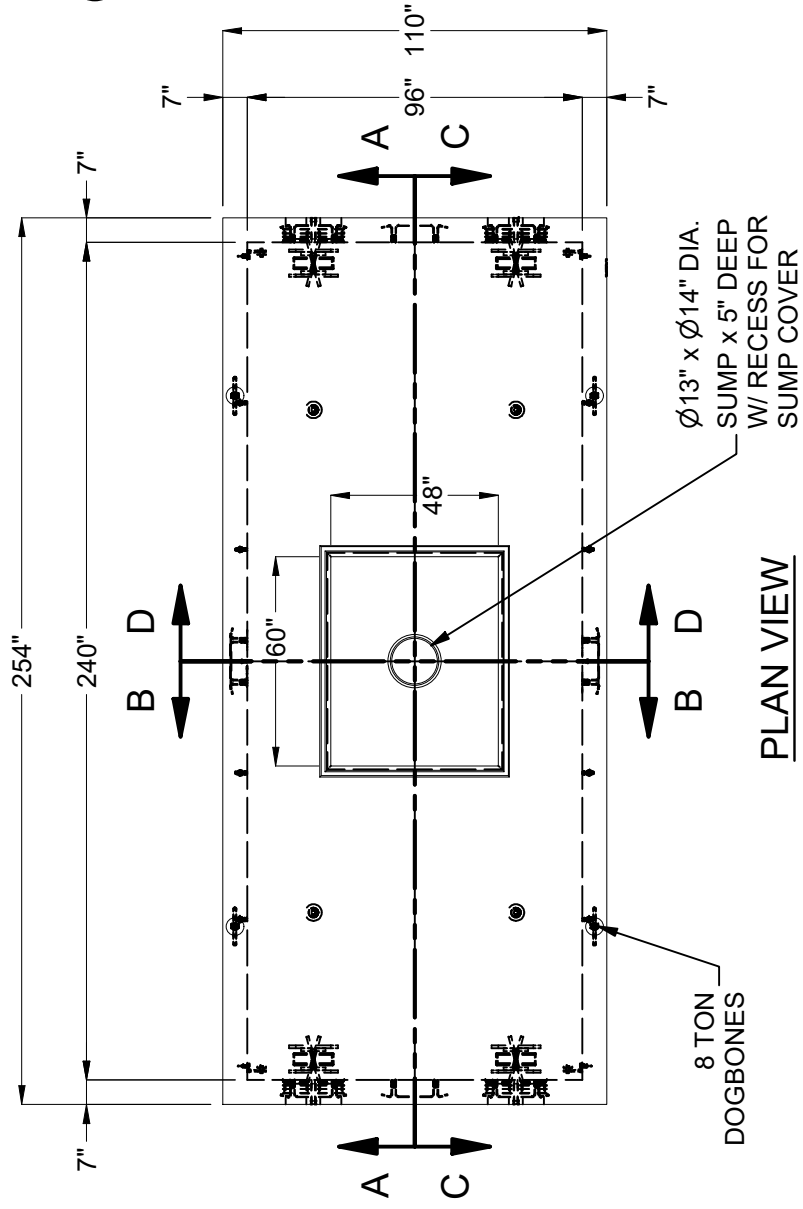
SECTION D-D



SECTION A-A



SECTION C-C



PLAN VIEW

BURY DEPTH:	0.0' - 4.0' to Top	DESCRIPTION:	Utility Vault 96240 Layout Assembly SDGE 34003-01 Transmission Vault
WATER LEVEL:	3.0'	REV:	B-3
DESIGN SPEC:	ASTM C857, ACI 318	PART NUMBER:	100009277
AGENCY:	SDGE	CREATED:	7/18/2019
APPROX. WEIGHT:	88951.55 Lbs	LAYOUT DRAWING	
LOADING SPEC:	A-16 (AASHTO HS20-44)	DRAWN BY:	D. Mejia
AGENCY SPEC:	34003-01 Transmission Vault	MODIFIED:	3/31/2022
		©2022 Jensen Precast. All rights reserved. All materials appearing as Jensen Precast documents and the like are proprietary work product and are protected under U.S. copyright and other laws. Unless in conjunction with business conducted with Jensen Precast, any use of Jensen Precast work product without express, written consent is prohibited, and recipient is prohibited from distributing any and all work product to non-approved third parties under penalty of civil action.	
		<b>JENSEN PRECAST</b> EST. 1968	
		WWW.JENSENPRECAST.COM	