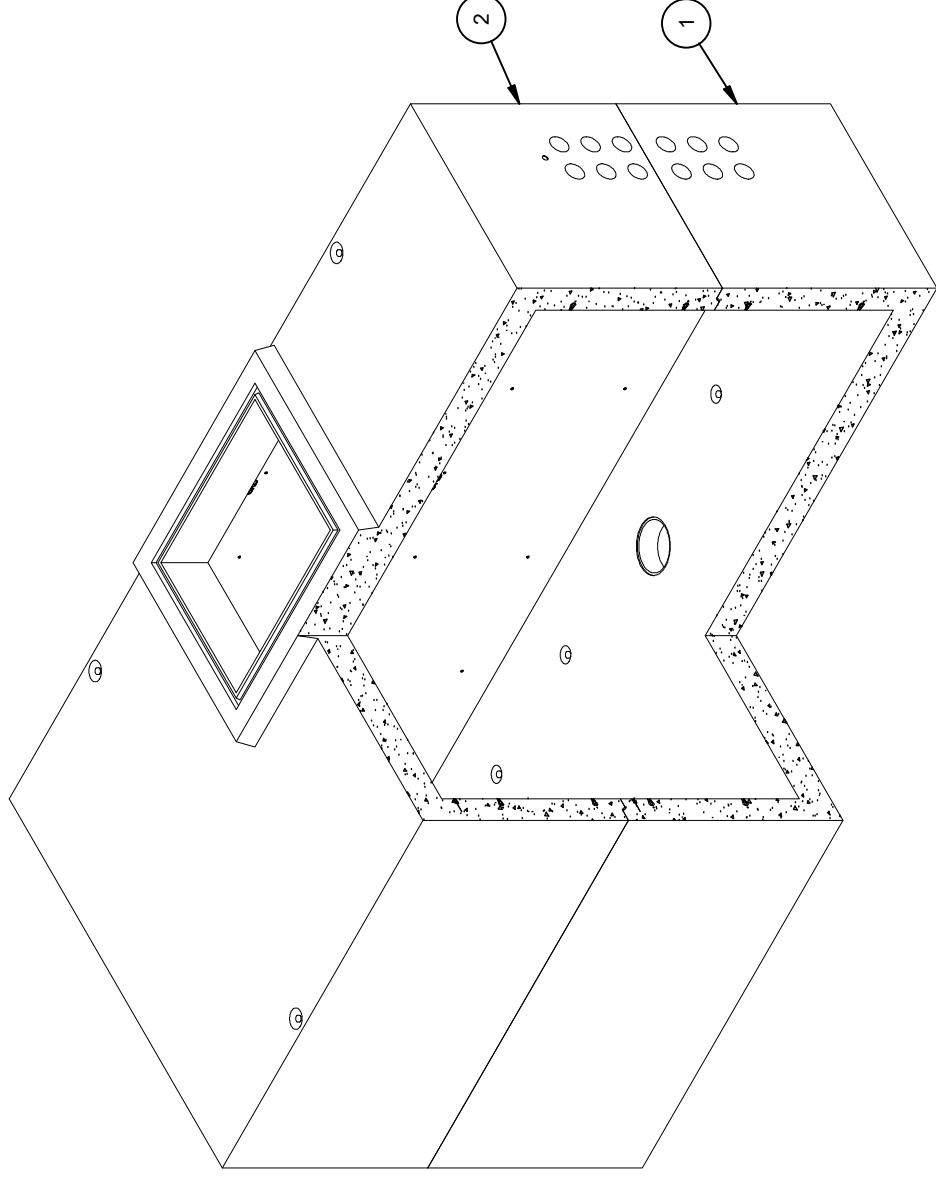


DESIGN NOTES

- DESIGNED IN ACCORDANCE WITH AASHTO HS20-44 TRAFFIC BRIDGE LOADING USING 5,500 PSI COMPRESSIVE STRENGTH CONCRETE AND 60,000 PSI YIELD STRENGTH ASTM A-706 STEEL REINFORCEMENT PER CALCS. #32987.
- MINIMUM EXCAVATION SIZE: 12'-4" X 22'-4" X DEPTH REQ'D.
- COVER DESIGN FOR TRAFFIC LOADING.
- VAULT TO BE PLACED ON A MIN. 6" BASE OF CRUSHER RUN FOR EASE OF INSTALLATION AND EVEN LOAD DISTRIBUTION.
- CONCRETE MIX USED IN POURING THIS PRODUCT SHALL USE FLY ASH AS AN ADMIXTURE.
- FINISH COATING: ALL INTERIOR WALLS AND CEILING SHALL BE PAINTED WHITE.
- ALL PARTS TO BE STENCILED: MFG DATE / JOB NUMBER / PRODUCT ID / WEIGHT.
- FOR COMPLETE DESIGN AND PRODUCT INFORMATION CONTACT JENSEN PRECAST.

BILL OF MATERIALS

ITEM	UNIT QTY	QTY	PART NUMBER	DESCRIPTION	MASS (lb)
1	1	1	100012353	Vault 120240x57 Rect. Bottom Section 5" Terminators Sump Edison UGT 009 TUG-300	59990
2	1	1	100012354	Vault 120240x57 Rect. Top Section 48"x60"E 5" Terminators Edison UGT 009 TUG-300	57821
3	1,000 ul	1,000 ul	100005749	SEALANT JOINT BUTYL RUBBER ASTM C-990 AND M198 CS-102 1IN EQUIV X14.5FT PER BOX 118FT	
4	4,500 gal	4,500 gal	100006420	COATING PAINT LATEX WHITE	



ISO VIEW

LIFTING NOTES

- FIELD INSTALLATION: PLANT DEMOLDING: MINIMUM HANDLING CONCRETE STRENGTH F_c = 5500 PSI RIGGING EQUALIZER REQUIRED TO EQUALIZE LOAD TO 4 LIFTING POINTS WITH A SLING ANGLE BETWEEN 60° AND 90°
- BURY DEPTH: 0.0' - 4.0' to Top of Section
- WATER LEVEL: 3.0' APPROX. WEIGHT: 117811.3 Lbs
- DESIGN SPEC: ASTM C857, ACI 318 LOADING SPEC: A-16 (AASHTO HS20-44)
- AGENCY: EDISON AGENCY SPEC: UGT 009



EST. 1968

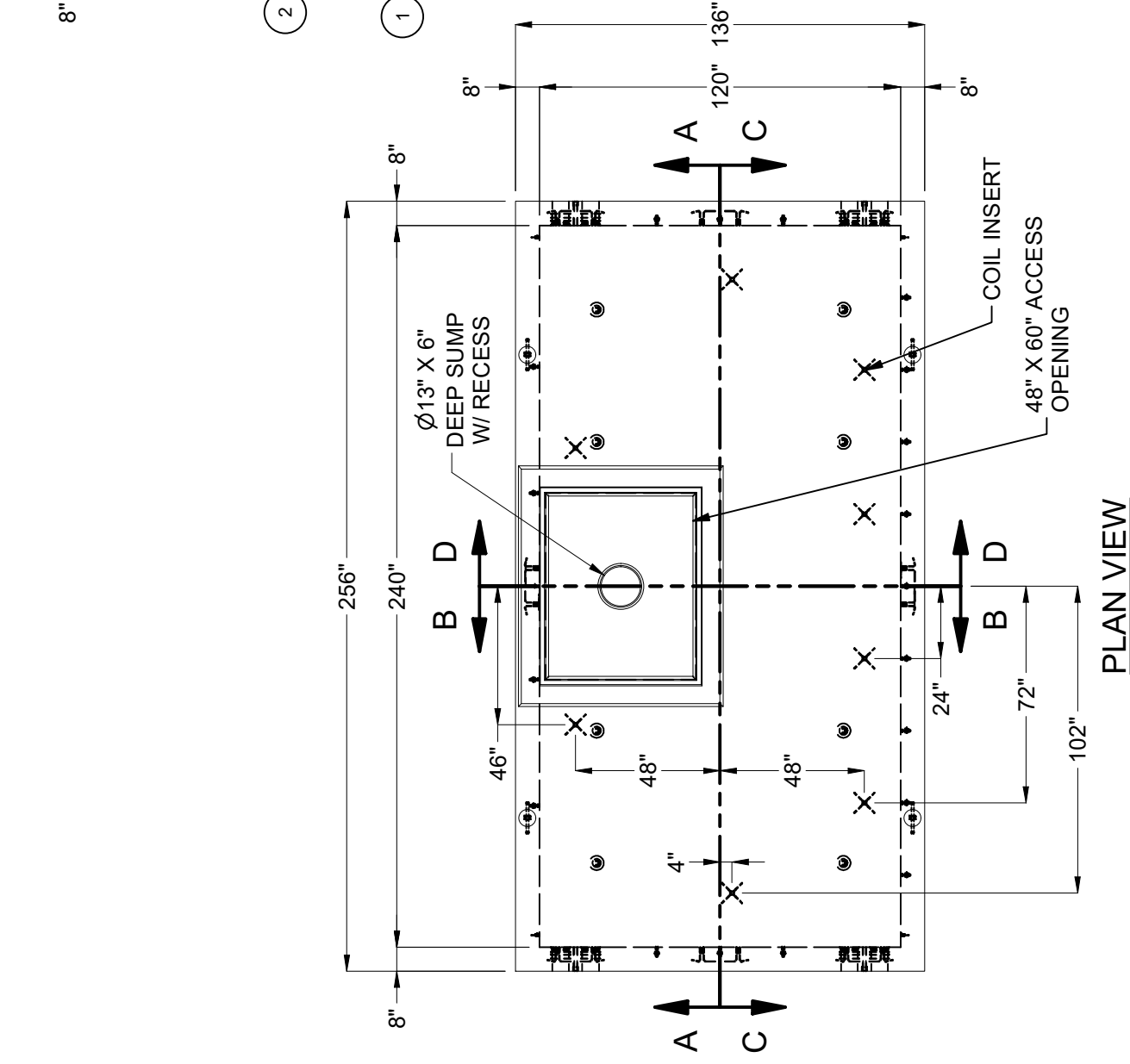
WWW.JENSENPRECAST.COM

©2024, Jensen Precast. All rights reserved. All materials appearing as Jensen Precast documents and the like are proprietary work product and are protected under U.S. copyright and other laws. Unless in conjunction with business conducted with Jensen Precast, any use of Jensen Precast work product without express, written consent is prohibited, and recipient is prohibited from distributing any and all work product to non-approved third parties under penalty of civil action. This product shall only be produced in a Jensen Precast facility.

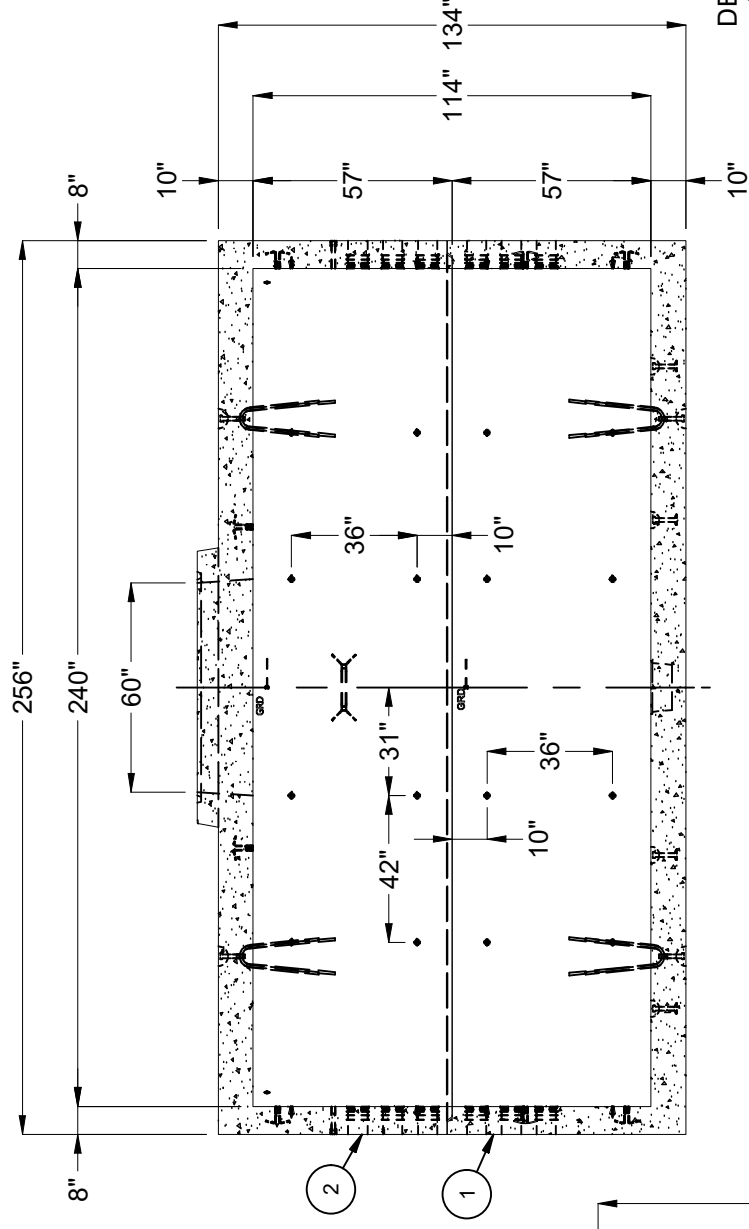
REVISION HISTORY

REV	DESCRIPTION	DATE	APPROVED
A-2	INITIAL RELEASE	9/5/2024	

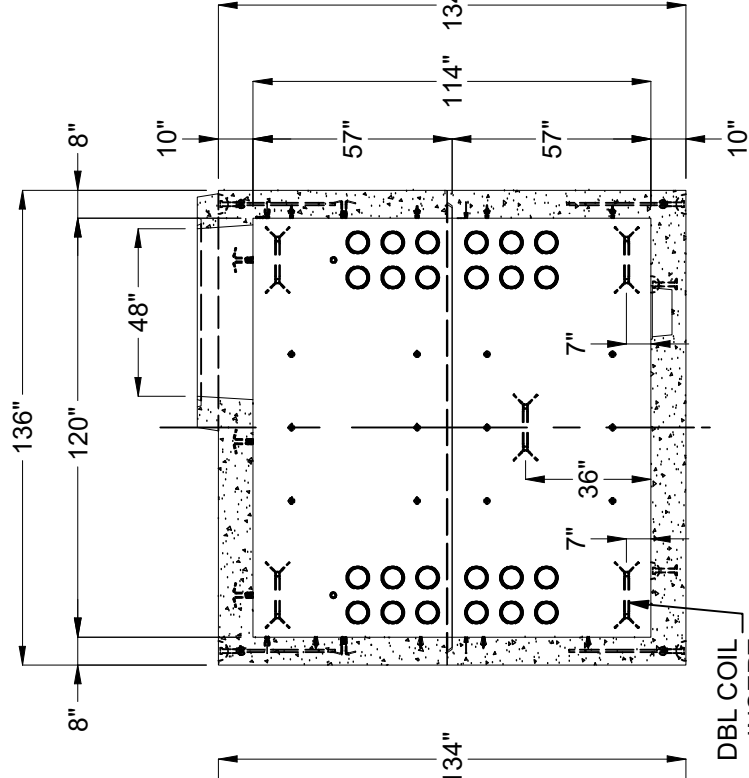
DESCRIPTION:	Transmission Vault 120240 Layout Assembly EDISON UGT 009 Int. Coating - White Latex Paint	REV:	B 134
PART NUMBER:	100010260	LAYOUT REVIEW	SHEET:
CREATED:	6/5/2020	DRAWN BY:	S. Rodarte
		MODIFIED:	9/5/2024



PLAN VIEW

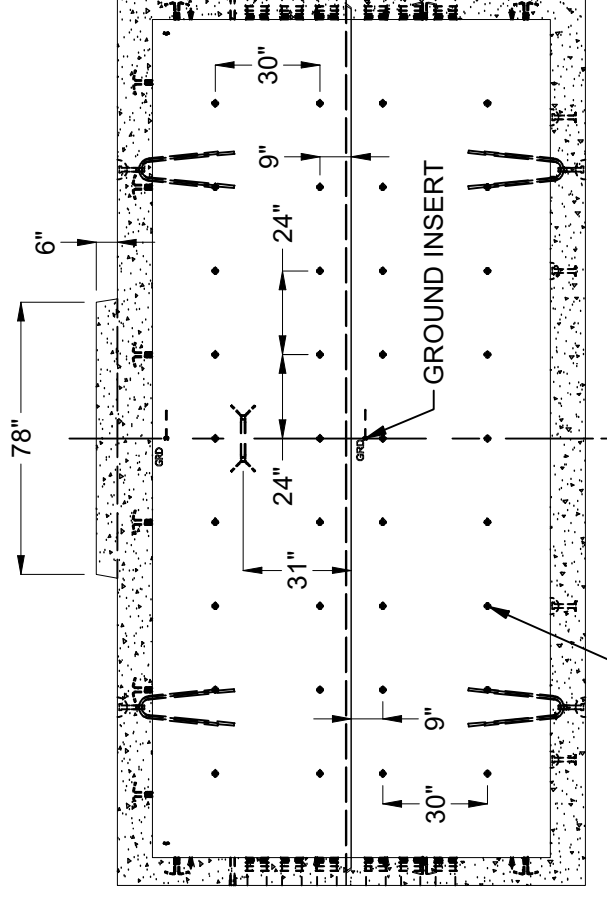


SECTION A-A



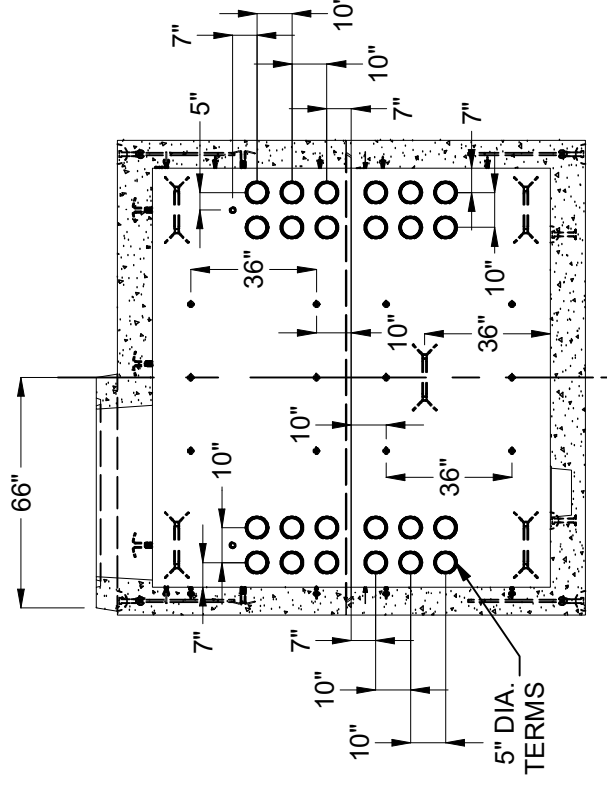
SECTION B-B

DBL COIL INSERT



SECTION C-C

RACKING INSERT



SECTION D-D

5" DIA. TERMS

BURY DEPTH:	0.0' - 4.0' to Top of Section		
WATER LEVEL:	3.0'	APPROX. WEIGHT:	117811.3 Lbs
DESIGN SPEC:	ASTM C857, ACI 318	LOADING SPEC:	A-16 (AASHTO HS20-44)
AGENCY:	EDISON	AGENCY SPEC:	UGT 009

©2024, Jensen Precast. All rights reserved. All materials appearing as Jensen Precast documents and the like are proprietary work product and are protected under U.S. copyright and other laws. Unless in conjunction with business conducted with Jensen Precast, any use of Jensen Precast work product without express, written consent is prohibited, and recipient is prohibited from distributing any and all work product to non-approved third parties under penalty of civil action. This product shall only be produced in a Jensen Precast facility.

JENSEN PRECAST EST. 1968
WWW.JENSENPRECAST.COM

DESCRIPTION:	Transmission Vault 120240 Layout Assembly EDISON UGT 009 Int. Coating - White Latex Paint			
LAYOUT DRAWING	PART NUMBER:	100010260	DRAWN BY:	S. Rodarte
REV: B	CREATED:	6/5/2020	MODIFIED:	9/5/2024
SHEET:	2 OF 2			