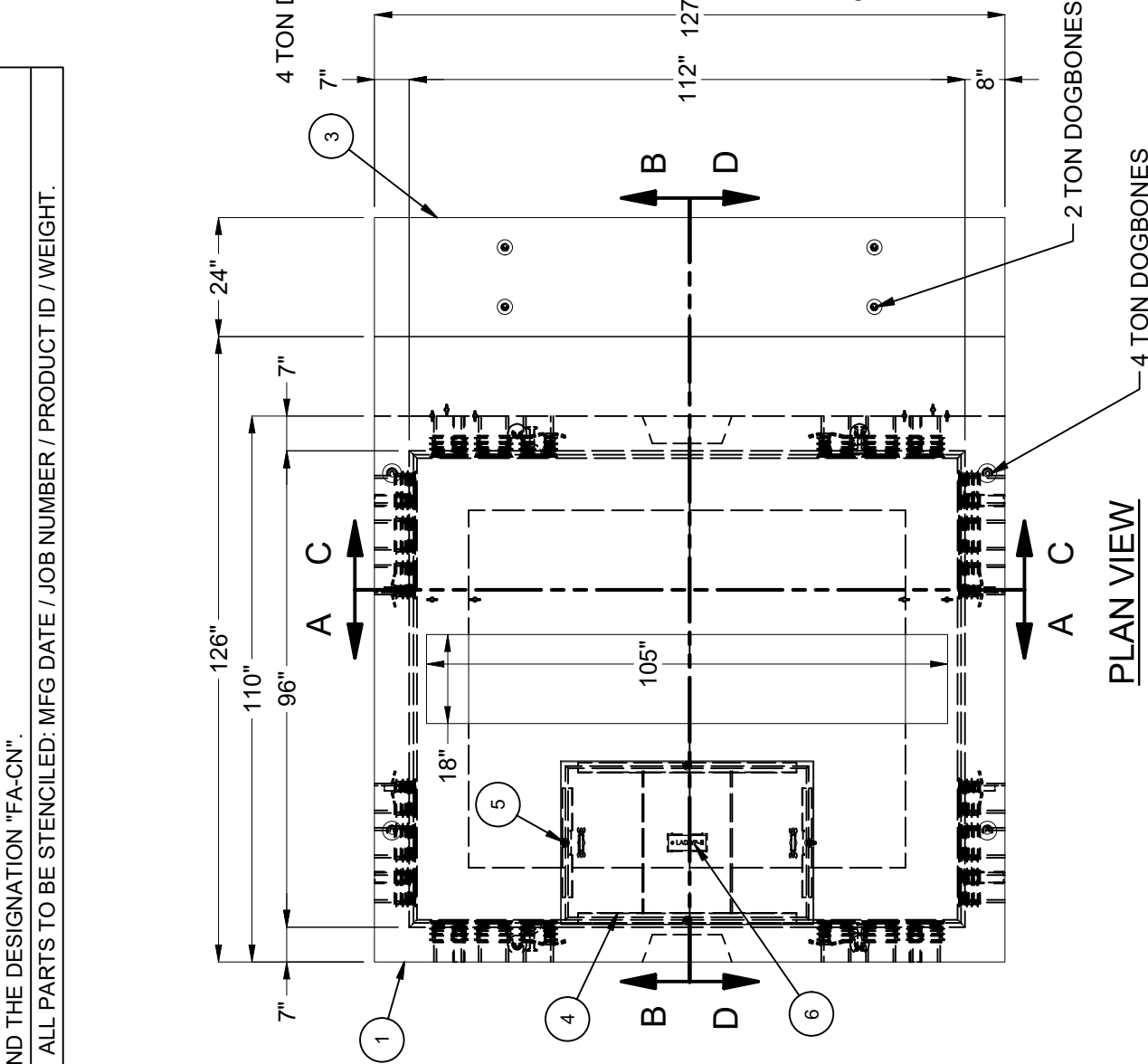


DESIGN NOTES

- DESIGNED IN ACCORDANCE WITH LADWP SPEC. P 178-R8 USING 5,500 PSI COMPRESSIVE STRENGTH CONCRETE AND 60,000 PSI YIELD STRENGTH ASTM A-706 STEEL REINFORCEMENT PER CALCS. #33700.
- TRANSFORMER PAD DESIGNED PER 100 PSF LIVE LOAD AND 400 PSF DEAD LOAD.
- VAULT TO BE PLACED ON A MIN. 6" BASE OF CRUSHER RUN FOR EASE OF INSTALLATION AND EVEN LOAD DISTRIBUTION.
- CONCRETE MIX USED IN POURING THIS PRODUCT SHALL USE FLY ASH AS AN ADMIXTURE.
- MINIMUM EXCAVATION SIZE: 10'-2" X 11'-7" X DEPTH REQ'D.
- EACH CONCRETE SECTION SHALL BE MARKED ON THE INSIDE AND OUTSIDE WITH "JENSEN PRECAST", THE DESIGNATION "DWP/FA-CN" AND THE DATE OF THE POUR.
- EACH CONCRETE SECTION SHALL HAVE CAST-IN ON THE INSIDE "JENSEN", THE YEAR, AND THE DESIGNATION "FA-CN".
- ALL PARTS TO BE STENCILED: MFG DATE / JOB NUMBER / PRODUCT ID / WEIGHT.

BILL OF MATERIALS

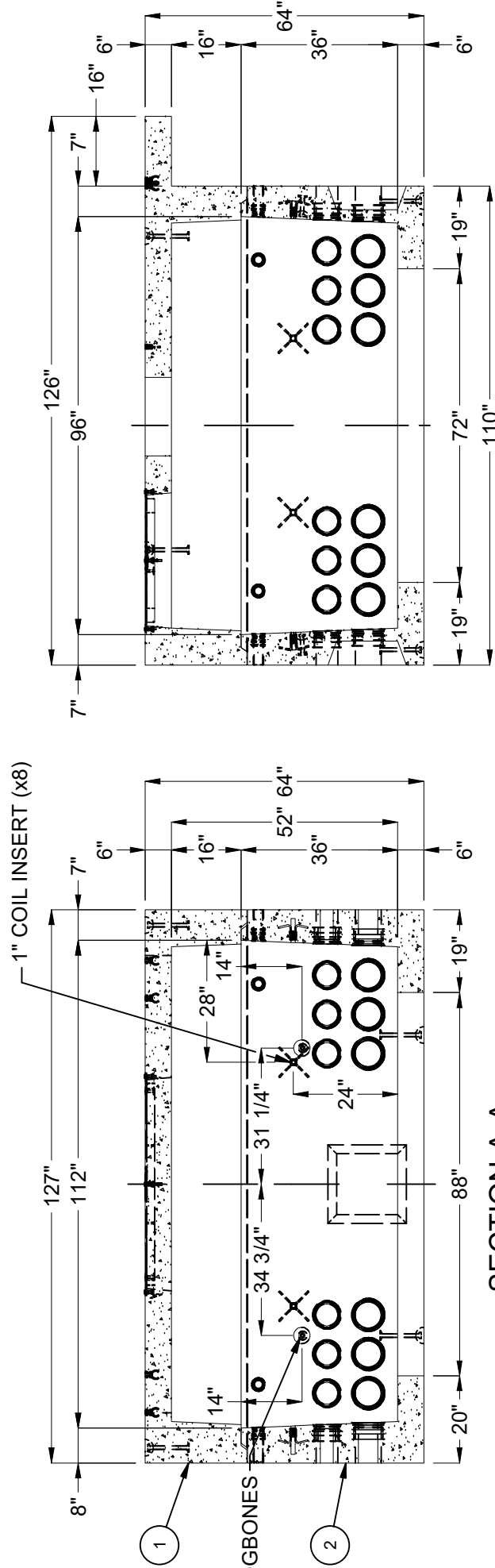
ITEM	UNIT QTY	QTY	PART NUMBER	DESCRIPTION
1	1	1	100012334	Pad Mount Vault 96112x16 30"x48"E LADWP UB721-15 R8 & UB721-31 R3
2	1	1	100012333	Vault 96112x36 Rect. Bottom Section Knockout, Terminators LADWP UB721-15 R8 & UB721-31 R3
3	1	1	100012261	Pad 24127x6 LADWP UB721-15 R8 & UB721-31 R3
4	1	1	100006640	DAS1-SD-3048-DX-DP-G-FONT-PAGV (SC3048 PAGV)
5	1	4	100007122	BOLT PENTA 1/2-13 UNC 0.875 HEAD 1.5L 304SS
6	1	1	100006748	NAME PLATE SS - LADWP-E
7	1	1	100007650	NAME PLATE HARDWARE KIT
8	1.000 ul	1.000 ul	100005749	SEALANT JOINT BUTYL RUBBER ASTM C-990 AND M198 CS-102 1IN EQUIV X14.5FT PER BOX 118FT



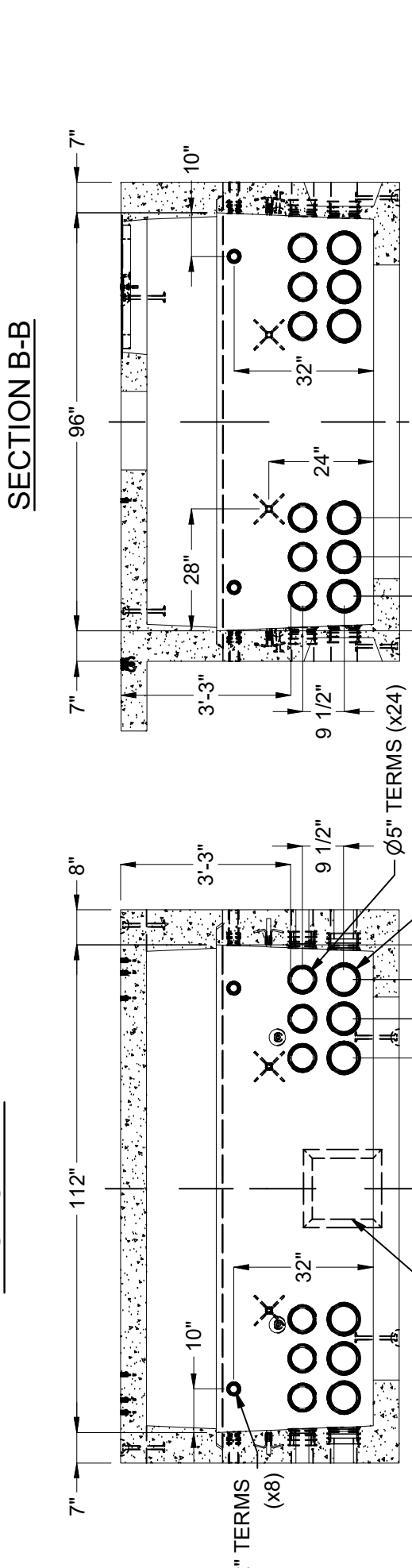
PLAN VIEW

LIFTING NOTES

- FIELD INSTALLATION: PLANT DEMOLING: MINIMUM HANDLING CONCRETE STRENGTH $F'_c = 5500$ PSI RIGGING EQUALIZER REQUIRED TO EQUALIZE LOAD TO 4 LIFTING POINTS WITH A SLING ANGLE BETWEEN 60° AND 90°



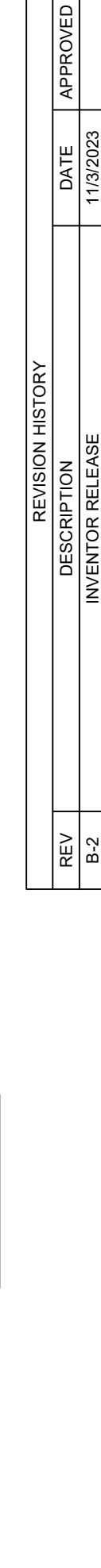
SECTION A-A



SECTION B-B



SECTION C-C



SECTION D-D

BURY DEPTH:	-0.5' - 0.0' to Top
WATER LEVEL:	Below Structure
DESIGN SPEC:	ACI 318, ASTM C857
AGENCY:	LADWP
APPROX. WEIGHT:	27379.46 Lbs
LOADING SPEC:	A-16 (AASHTO HS20-44)
AGENCY SPEC:	UB721-15 R8 & UB721-31 R3

JENSEN PRECAST EST. 1968
 WWW.JENSENPRECAST.COM

©2023, Jensen Precast. All rights reserved. All materials appearing as Jensen Precast documents and the like are proprietary work product and are protected under U.S. copyright and other laws. Unless in conjunction with business conducted with Jensen Precast, any use of Jensen Precast work product without express, written consent is prohibited, and recipient is prohibited from distributing any and all work product to non-approved third parties under penalty of civil action.

REVISION HISTORY	REVISION	DESCRIPTION	DATE	APPROVED
	B-2	INVENTOR RELEASE	11/3/2023	
DESCRIPTION:	Pad Mount Vault Layout 96112x52 Knockout, Terminators 30"x48"E LADWP UB721-15 R8 & UB721-31 R3			
PART NUMBER:	100010261	LAYOUT REVIEW	DRAWN BY: R. Ramos	
CREATED:	10/30/2023	MODIFIED:	11/3/2023	
REV:	B-3	SHEET:	176	
			1 OF 1	