

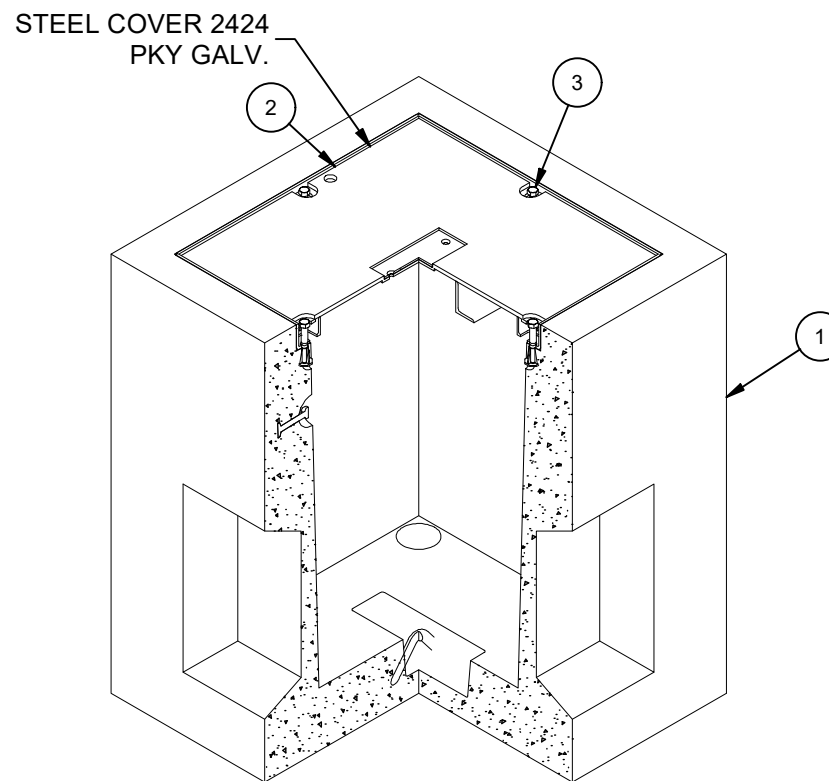
DESIGN NOTES

- DESIGNED IN ACCORDANCE WITH H-20-44 BRIDGE LOADING USING 5,500 PSI COMPRESSIVE STRENGTH CONCRETE AND 60,000 PSI YIELD STRENGTH ASTM A-706 STEEL REINFORCEMENT PER CALCS. #32362.
- MINIMUM EXCAVATION SIZE: 4'-0" X 4'-0" X DEPTH REQ'D.
- COVER DESIGN FOR INCIDENTAL PARKWAY.
- VAULT TO BE PLACED ON A MIN. 6" BASE OF CRUSHER RUN FOR EASE OF INSTALLATION AND EVEN LOAD DISTRIBUTION.
- ALL PARTS TO BE STENCILED: MFG DATE / JOB NUMBER / PRODUCT ID / WEIGHT.
- FOR COMPLETE DESIGN AND PRODUCT INFORMATION CONTACT JENSEN PRECAST.

COVER:
MARKED "AS REQ'D".

BILL OF MATERIALS

| ITEM | UNIT QTY | QTY | PART NUMBER | DESCRIPTION | MASS (lb) |
|------|----------|-----|-------------|--|-----------|
| 1 | 1 | 1 | 100006577 | Vault 2424x36 Rect. Bottom Section Knockout Sump Cast-In Frame | 2166 |
| 2 | 1 | 1 | 100006610 | DOOR 2424 STEEL PED DROP-IN DP GALV | 81 |
| 3 | 1 | 4 | 100004205 | BOLT HEX 1/2-13 UNC 3 304SS | |
| 4 | 1 | 1 | 100006739 | FONTANA NAME PLATE SS BLANK | |
| 5 | 1 | 1 | 100007650 | NAME PLATE HARDWARE KIT | |



ISOMETRIC VIEW

LIFTING NOTES

- FIELD INSTALLATION: PLANT DEMOLDING: MINIMUM HANDLING CONCRETE STRENGTH F'c = 5500 PSI RIGGING EQUALIZER REQUIRED TO EQUALIZE LOAD TO 2 LIFTING POINTS WITH A SLING ANGLE BETWEEN 60° AND 90°

| | |
|-----------------|-----------------------|
| BURY DEPTH: | 0.0' - 0.0' to Top |
| WATER LEVEL: | 3.0' |
| DESIGN SPEC: | ACI 318, ASTM C857 |
| AGENCY: | |
| APPROX. WEIGHT: | 2248.37 Lbs |
| LOADING SPEC: | A-16 (AASHTO HS20-44) |
| AGENCY SPEC: | |



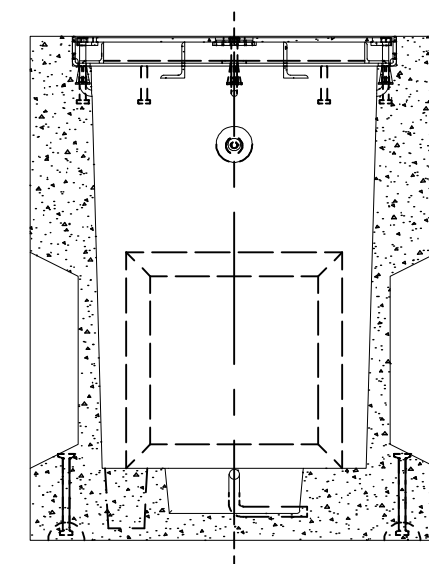
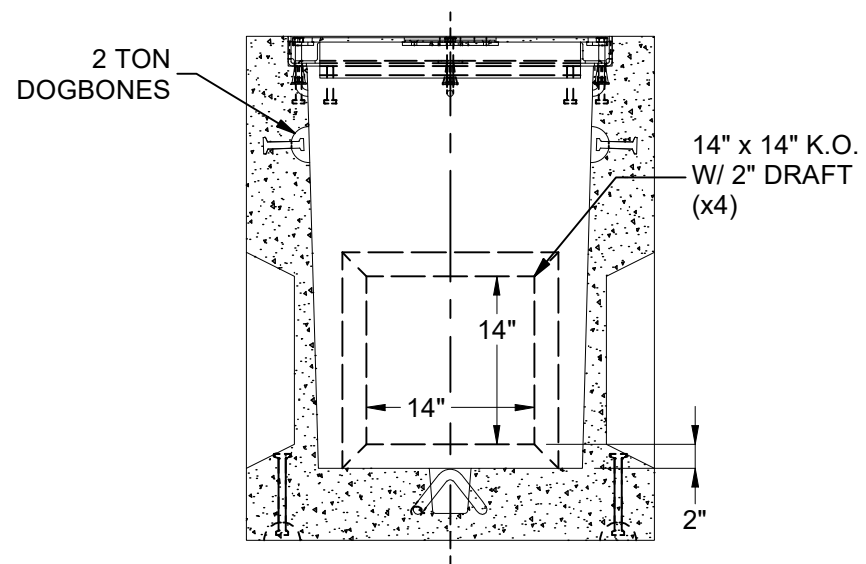
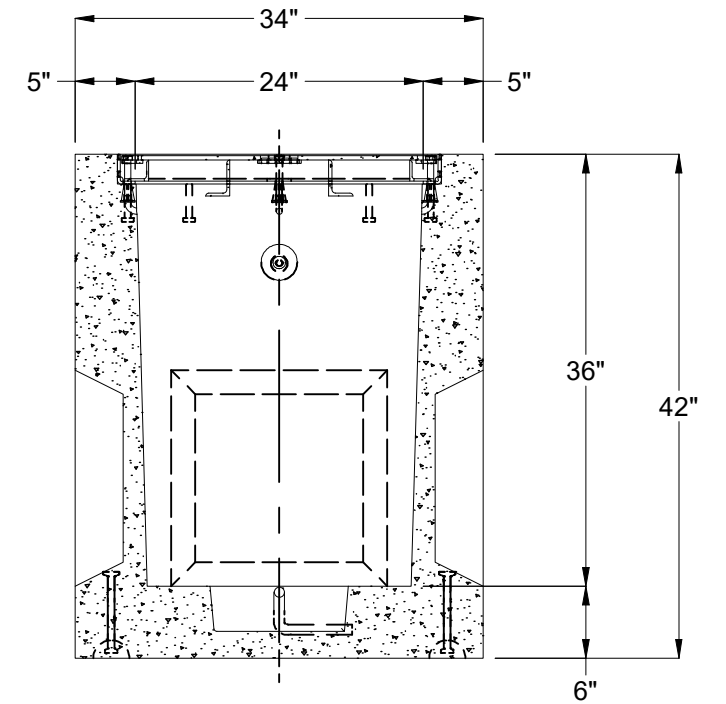
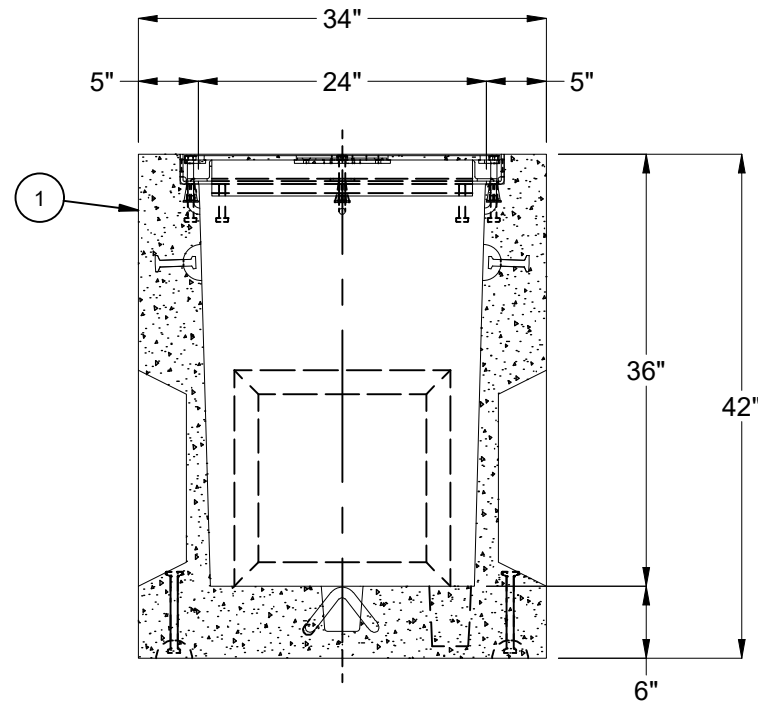
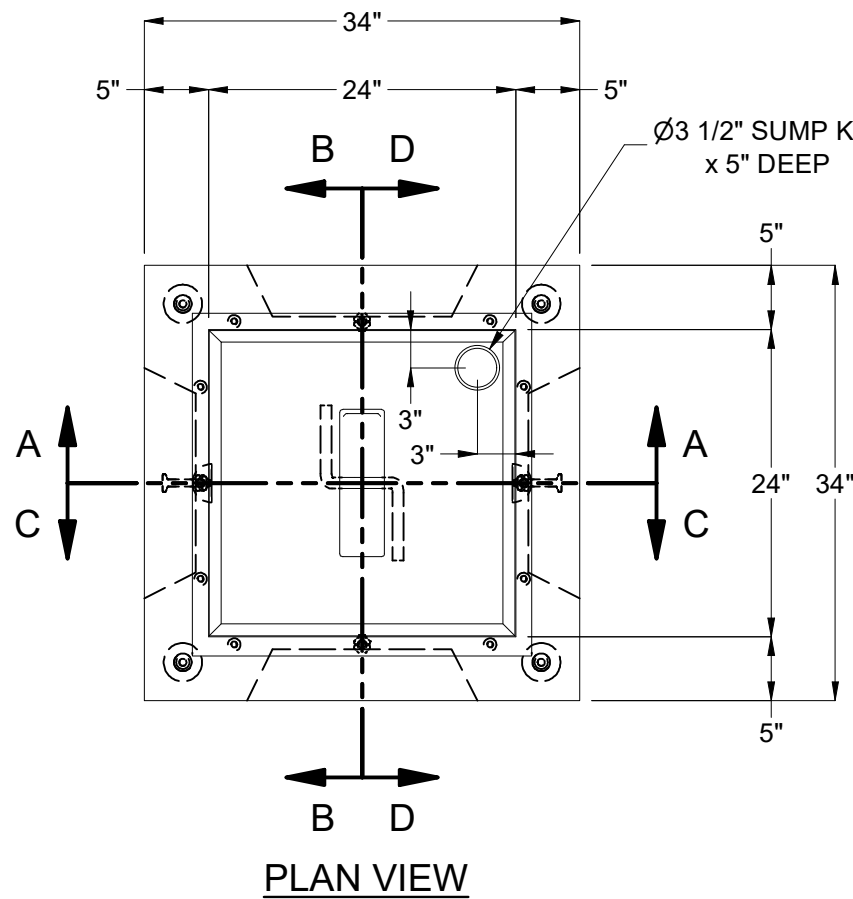
©2024 Jensen Precast- All rights reserved. All materials appearing as Jensen Precast documents and the like are proprietary work product and are protected under U.S. copyright and other laws. Unless in conjunction with business conducted with Jensen Precast, any use of Jensen Precast work product without express, written consent is prohibited, and recipient is prohibited from distributing any and all work product to non-approved third parties under penalty of civil action.

REVISION HISTORY

| REV | DESCRIPTION | DATE | APPROVED |
|-----|--------------------------|-----------|----------|
| B-1 | INITIAL RELEASE INVENTOR | 3/27/2024 | |

| | | | | | |
|---------------|---|-----------|-----------|--------|--------|
| DESCRIPTION: | Vault Layout 2424x36 Knockout Sump 24"x24"C Parkway | | REV: | B-1 | |
| LAYOUT REVIEW | | | | | |
| PART NUMBER: | 100010262 | DRAWN BY: | J. Prado | | |
| CREATED: | 3/26/2024 | MODIFIED: | 3/27/2024 | | |
| | | | | SHEET: | 1 OF 2 |

100010262.dwg



SECTION C-C

SECTION D-D

100010262.rdw

| | |
|-----------------|-----------------------|
| BURY DEPTH: | 0.0' - 0.0' to Top |
| WATER LEVEL: | 3.0' |
| DESIGN SPEC: | ACI 318, ASTM C857 |
| AGENCY: | |
| APPROX. WEIGHT: | 2248.37 Lbs |
| LOADING SPEC: | A-16 (AASHTO HS20-44) |
| AGENCY SPEC: | |

JENSEN PRECAST EST. 1968

WWW.JENSENPRECAST.COM

©2024 Jensen Precast- All rights reserved.
All materials appearing as Jensen Precast documents and the like are proprietary work product and are protected under U.S. copyright and other laws.
Unless in conjunction with business conducted with Jensen Precast, any use of Jensen Precast work product without express, written consent is prohibited, and recipient is prohibited from distributing any and all work product to non-approved third parties under penalty of civil action.

| | | |
|--------------|---|---------------------|
| DESCRIPTION: | Vault Layout 2424x36 Knockout Sump 24"x24"C Parkway | |
| | LAYOUT DRAWING | |
| PART NUMBER: | 100010262 | DRAWN BY: J. Prado |
| CREATED: | 3/26/2024 | MODIFIED: 3/27/2024 |

| | |
|--------|--------|
| REV: | B-1 |
| SHEET: | 2 OF 2 |