

2' x 3' x 2' FLAT WALL HANDHOLE

MODEL K2436-FH24-12T

NOTES:

STRUCTURE DESIGNED IN ACCORDANCE WITH:

AASHTO H-20 TRAFFIC BRIDGE LOADING

ASTM C-857 STANDARD PRACTICE FOR MINIMUM STRUCTURAL DESIGN LOADING FOR UNDERGROUND PRECAST CONCRETE UTILITY STRUCTURES

AMERICAN CONCRETE INSTITUTE ACI 318-05

CONCRETE COMPRESSIVE STRENGTH $F'_c = 5500$ PSI

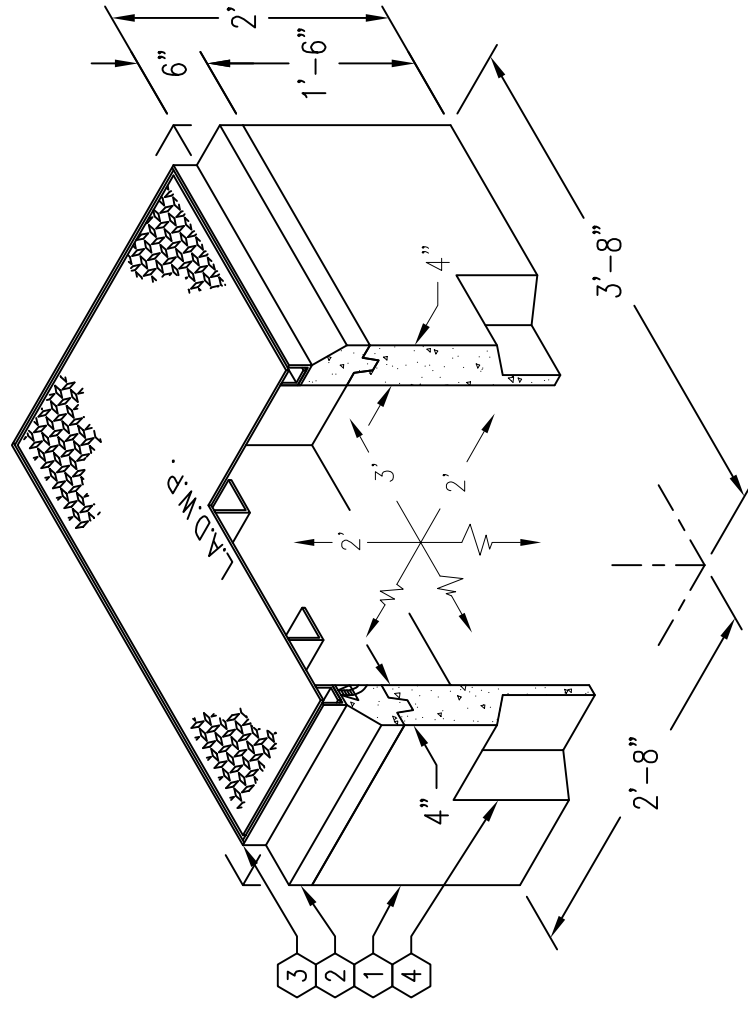
REINFORCEMENT IN ACCORDANCE WITH ASTM A-706 WITH A YIELD STRENGTH OF $F_y = 60,000$ PSI.

6" MINIMUM COMPACTED GRANULAR MATERIAL RECOMMENDED FOR SUB-BASE FOR EASE OF INSTALLATION AND EVEN LOAD DISTRIBUTION.

TRAFFIC COVER DESIGNED FOR H-20-44 TRAFFIC LOADING FOR OFF STREET USE ONLY.
PARKWAY COVER DESIGNED FOR PARKWAY LOADING OF 300 PSF.

1. PB2436F-L18-12, 18" LOWER SECTION, WT. 885 lbs.
2. PB2436-T6-12, 6" TOP SECTION WITH GALV. CAST-IN FRAME, WT. 254 lbs.
3. ONE PIECE STEEL TRAFFIC SLIP RESISTANT GALV. COVER, MARK "LADWP-E", WT. 159 lbs.
4. 8" x 14" KNOCKOUT x 3" DEEP.

L.A.D.W.P. SPEC.
E-492

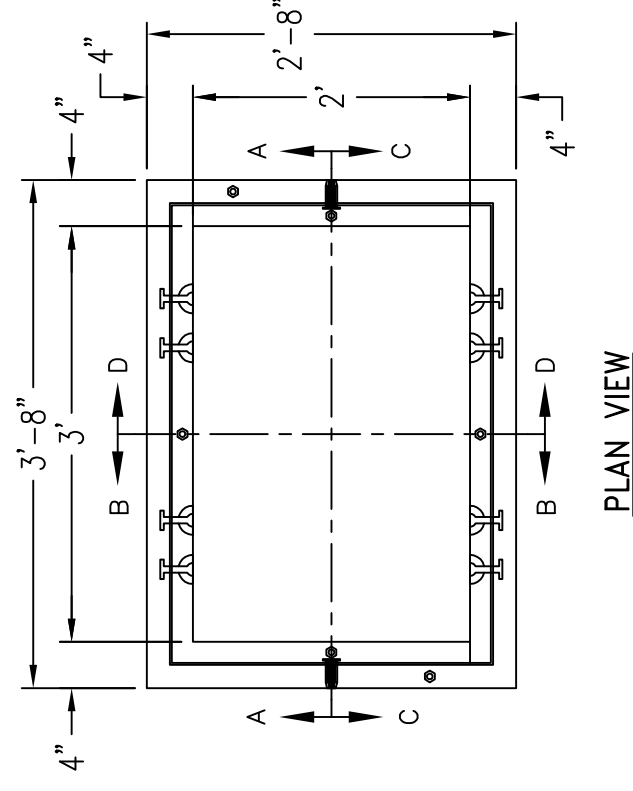


MINIMUM EXCAVATION SIZE:
3'-8" x 4'-8" x REQ'D DEPTH

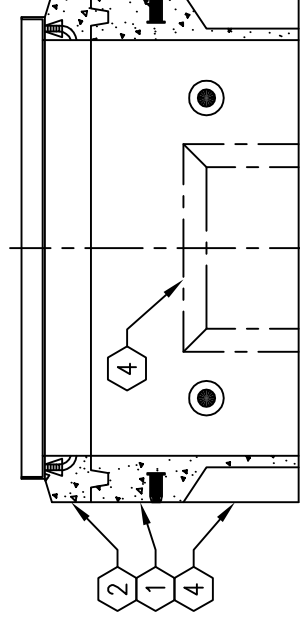
2' x 3' x 2' FLAT WALL HANDHOLE

MODEL K2436-FH24-12T

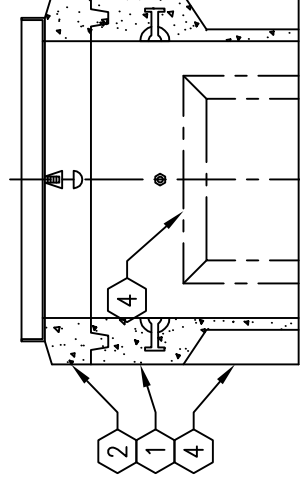
L.A.D.W.P. SPEC.
E-492



PLAN VIEW



SECTION A-A/C-C



SECTION B-B/D-D