

2'-0" x 3'-0" FLAT WALL PULL BOX x 36" DEEP

MATERIAL LIST K2436-FP36-14

| ITEM | PART NO. | DESCRIPTION | REBAR NO./LOCATE | MOUNT/WEIGHT |
|------|----------------|--|----------------------------|--------------|
| 1 | PB2436F-B30-05 | 30" BOTTOM SECTION | CG-100P3-2436, CG-MAT-2436 | 1,115 lbs |
| 2 | PB2436-T6F | 6" TOP SECTION | CG-100P3-2436 | 259 lbs |
| | F2436-PB-ANG | FRAME CAST-IN | | |
| 3A | SC2436-P-SRAL | (1) PC. SLIP RESISTANT PARKWAY COVER WITH RED PRIMER & ALUM. FINISH MARKED "SBC" | | |
| 3B | SC2436-TSRAL | (1) PC. SLIP RESISTANT PARKWAY COVER WITH RED PRIMER & ALUM. FINISH MARKED "SBC" | | |
| 5 | KNOCK OUT | 6" x 7" DIAMETER SUMP x 4" DEEP | BOTTOM SECTION | (1) CORE |
| 6 | KNOCK OUT | 20" x 20" DUCTED K.O. x 3" DEEP | BOTTOM SECTION | (2) CORE |
| 7 | KNOCK OUT | 8" x 16" K.O. x 3" DEEP | BOTTOM SECTION | (2) CORE |
| 8 | KNOCK OUT | 1" DIA. BLIND GROUND ROD HOLE | BOTTOM SECTION | (4) SHELL |
| 9 | 55-35-06 | 7/8" DIA. x 6" GALV. PULL IRON | BOTTOM SECTION | (2) CORE |
| 10 | 55-10-416 | 1/2" x 1 1/2" P-35T O B INSERT W/CLEANOUT | TOP SECTION | (2) FRAME |
| 11 | 55-10-424 | 1/2" PLASTIC INSERT | BOTTOM SECTION | (16) CORE |

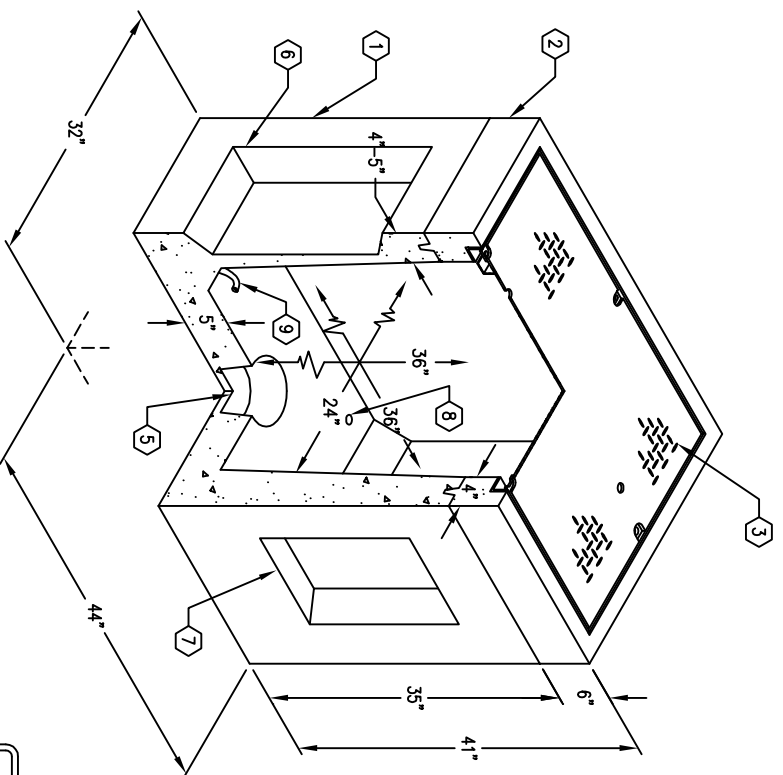
NOTES:

- CONCRETE IS DESIGNED FOR H-20-44 BRIDGE LOADING USING 5,500 PSI COMPRESSIVE STRENGTH CONCRETE AND 60,000 PSI A-706 REINFORCING STEEL PER CALCS. 31387.
- CONCRETE IS DESIGNED FOR H-20-44 BRIDGE LOADING USING 5,500 PSI COMPRESSIVE STRENGTH CONCRETE AND 60,000 PSI A-706 REINFORCING STEEL PER CALCS. 31387.
- COVER DESIGNED FOR PARKWAY LOADING 200 PSF. OR TRAFFIC H-20 LOADING.
- VAULT TO BE PLACED ON A 6" BASE OF CRUSHER RUN FOR EASE OF INSTALLATION AND EVEN LOAD DISTRIBUTION.

RACKING PACKAGE:
14 HOLE CABLE RACKS W/ BOLTS = 4.

ORDERING INFORMATION:
PER TEL 'C' SPECIFICATIONS,
TOTAL WEIGHT FOR ASSEMBLY AS SHOWN 1,521#.

PARKWAY ASSEMBLY WITH STEEL B/D COVER K2436-FP36-14P.
LIGHT TRAFFIC ASSEMBLY WITH STEEL B/D COVER K2436-FP36-14T.



MINIMUM EXCAVATION SIZE:
3'-2" x 4'-8" x DEPTH RECD.

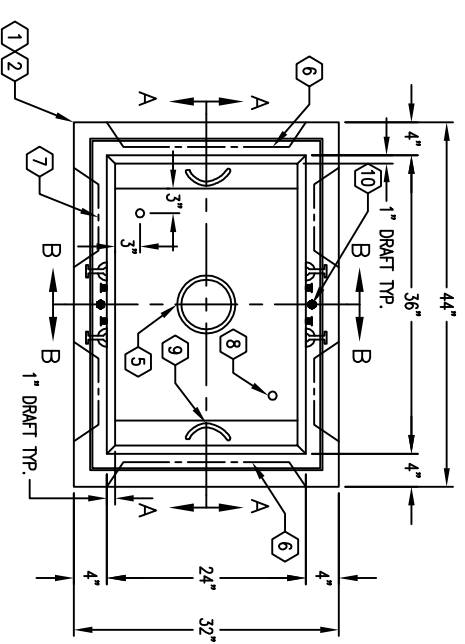
K2436-FP36-14



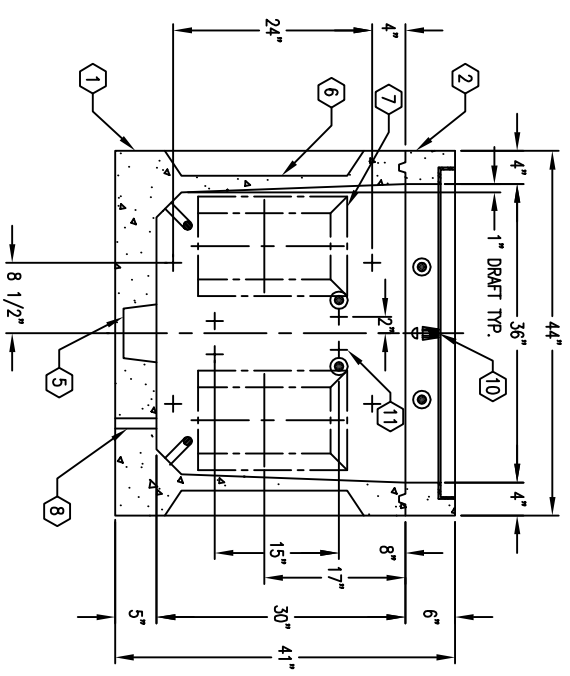
AUTOCAD REL. 14

PER TEL 'C' SPECS.

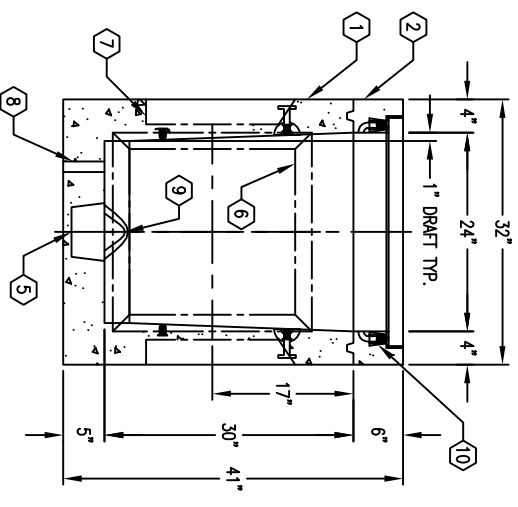
06-26-00



PLAN VIEW



SECTION A-A



SECTION B-B

K2436-FP36-14



| # | DATE | DESCRIPTION | BY |
|---|------|-------------|----|
| | | | |

PER TEL 'C' SPECS.

06-26-00