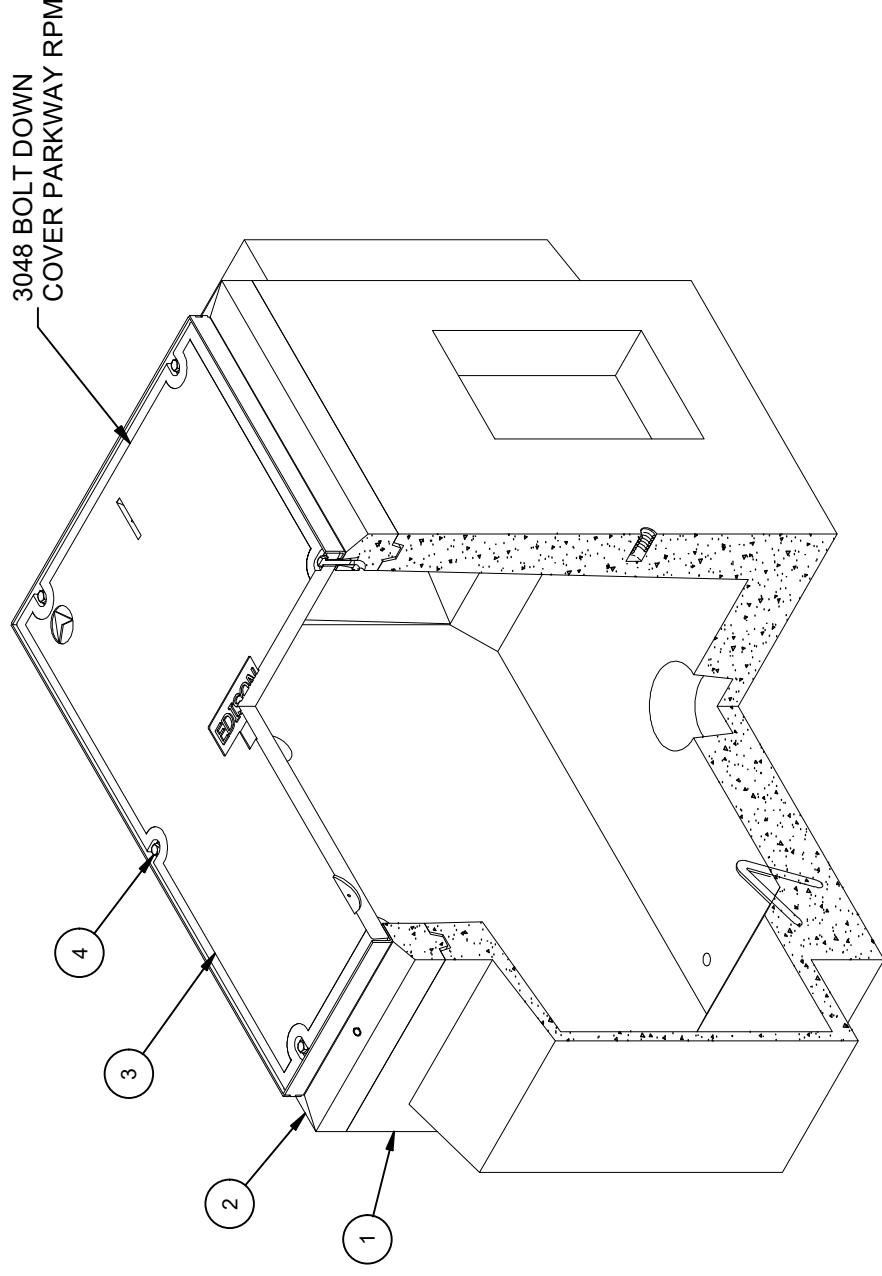


DESIGN NOTES

- DESIGNED IN ACCORDANCE WITH AASHTO HS20-44 TRAFFIC BRIDGE LOADING USING 5,500 PSI COMPRESSIVE STRENGTH CONCRETE AND 60,000 PSI YIELD STRENGTH ASTM A-706 STEEL REINFORCEMENT PER CALCS. #33230.
- COVER DESIGNED FOR 300 PSF, OR 600 lb LOAD ON 5.5" x 5.5" FOOTPRINT RESTRICTED TO AREAS OF PEDESTRIAN USE AND LIGHT MAINTENANCE VEHICLES USE, AND OTHER AREAS THAT ARE INACCESSIBLE TO ALL OTHER VEHICLE TRAFFIC.
- MINIMUM EXCAVATION SIZE: 4'-2" X 7'-2" X DEPTH REQ'D.
- VAULT TO BE PLACED ON A MIN. 6" BASE OF CRUSHER RUN FOR EASE OF INSTALLATION AND EVEN LOAD DISTRIBUTION.
- ALL PARTS TO BE STENCILED: MFG DATE / JOB NUMBER / PRODUCT ID / WEIGHT.
- FOR COMPLETE DESIGN AND PRODUCT INFORMATION CONTACT JENSEN PRECAST.

BILL OF MATERIALS

ITEM	UNIT QTY	QTY	PART NUMBER	DESCRIPTION	MASS (lb)
1	1	1	100012156	Vault 3048x36 Rect. Bottom Section Knockout Ducted,Sump Edison	3205
2	1	1	100012151	Top Riser 3048x6 Cast-In Frame LADWP	277
3	1	1	100007038	COVER 3048 POLYMER EDISON	259
4	1	6	100008105	PENTA BOLT 1/2-13 UNC 2-1/2 304SS W/CAPWASH	
5	1,000 ul	1,000 ul	100005749	SEALANT JOINT BUTYL RUBBER ASTM C-990 AND M198 CS-102 1IN EQUIV X14.5FT PER BOX 118FT	



ISOMETRIC VIEW

LIFTING NOTES

FIELD INSTALLATION: PLANT DEMOLDING: MINIMUM HANDLING CONCRETE STRENGTH F_c = 5500 PSI RIGGING EQUALIZER REQUIRED TO EQUALIZE LOAD TO 4 LIFTING POINTS WITH A SLING ANGLE BETWEEN 60° AND 90°

BURY DEPTH:	0.0' - 0.0' to Top
WATER LEVEL:	3.0'
DESIGN SPEC:	ACI 318,ASTM C857
AGENCY:	Edison
APPROX. WEIGHT:	3742.75 Lbs
LOADING SPEC:	A-16 (AASHTO HS20-44)
AGENCY SPEC:	UGS HP 220, PB-3



EST. 1968

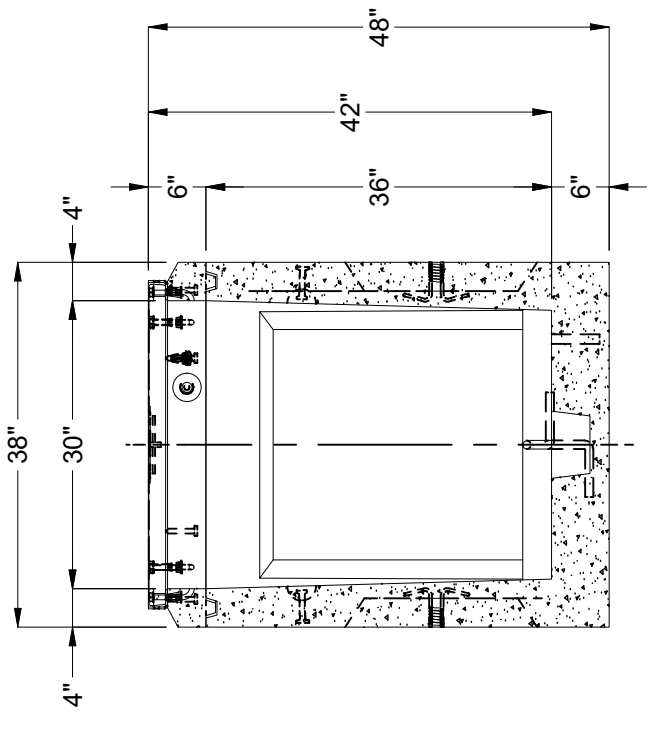
WWW.JENSENPRECAST.COM

©2024 Jensen Precast-All rights reserved. All materials appearing as Jensen Precast documents and the like are proprietary work product and are protected under U.S. copyright and other laws. Unless in conjunction with business conducted with Jensen Precast, any use of Jensen Precast work product without express, written consent is prohibited, and recipient is prohibited from distributing any and all work product to non-approved third parties under penalty of civil action.

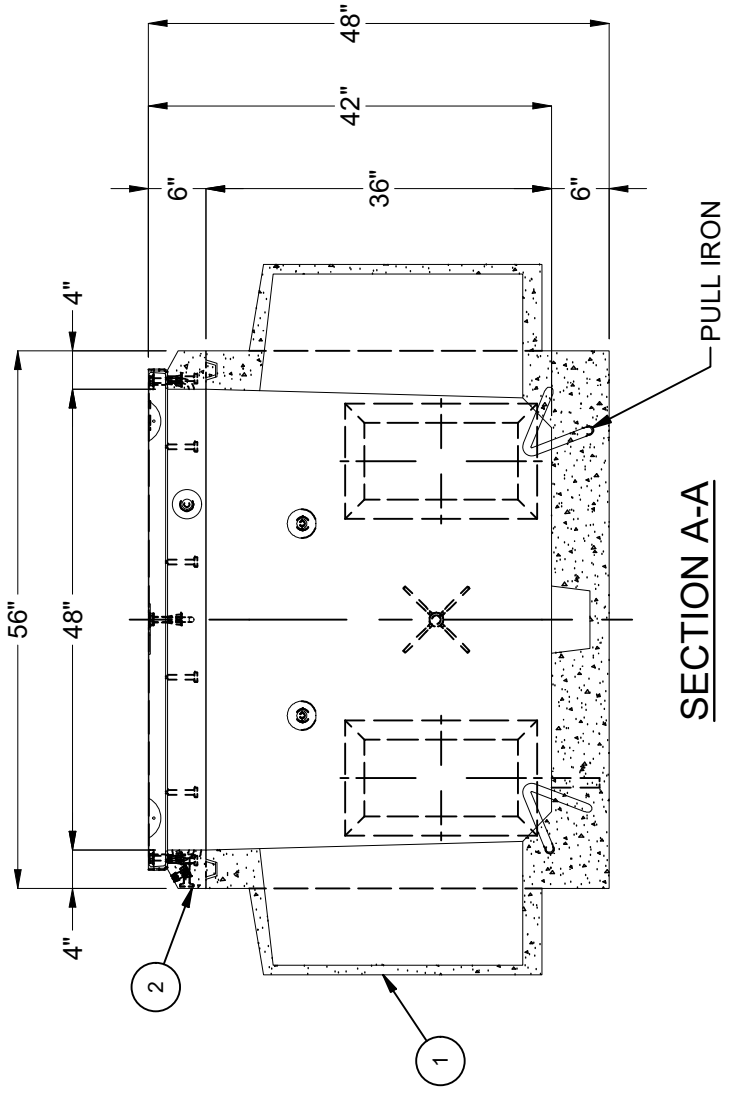
REVISION HISTORY

REV	DESCRIPTION	DATE	APPROVED
B	INITIAL RELEASE INVENTOR	4/5/2024	

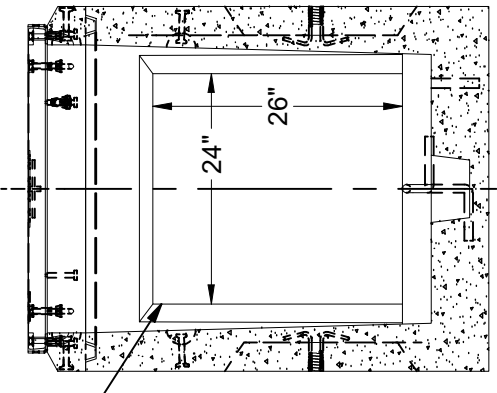
DESCRIPTION:	Vault Layout 3048x42 Knockout Ducted,Sump 3048"C Edison UGS HP 220, PB-3 RPM	REV:	B-1
PART NUMBER:	100010321	LAYOUT DRAWING	SHEET: 14
DRAWN BY:	J. Prado	MODIFIED:	4/5/2024
CREATED:	6/12/2019		1 OF 2



SECTION B-B

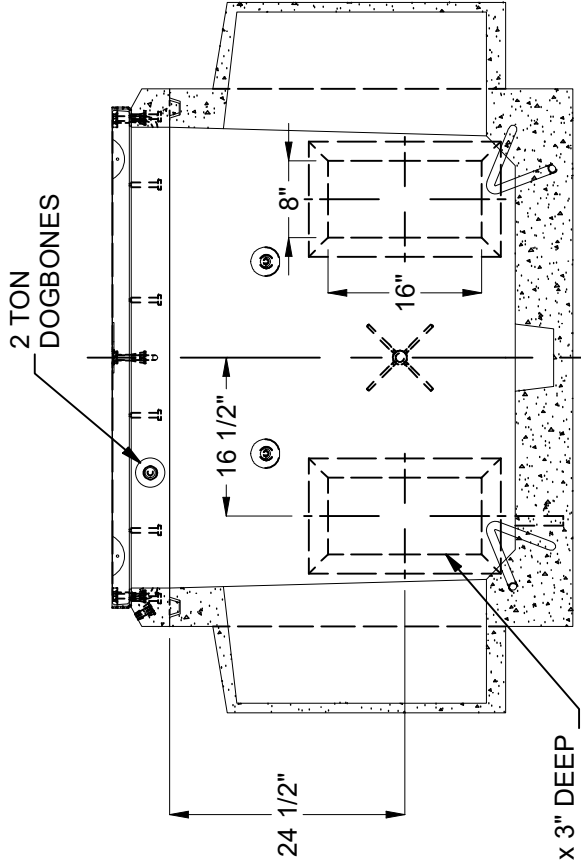


SECTION A-A



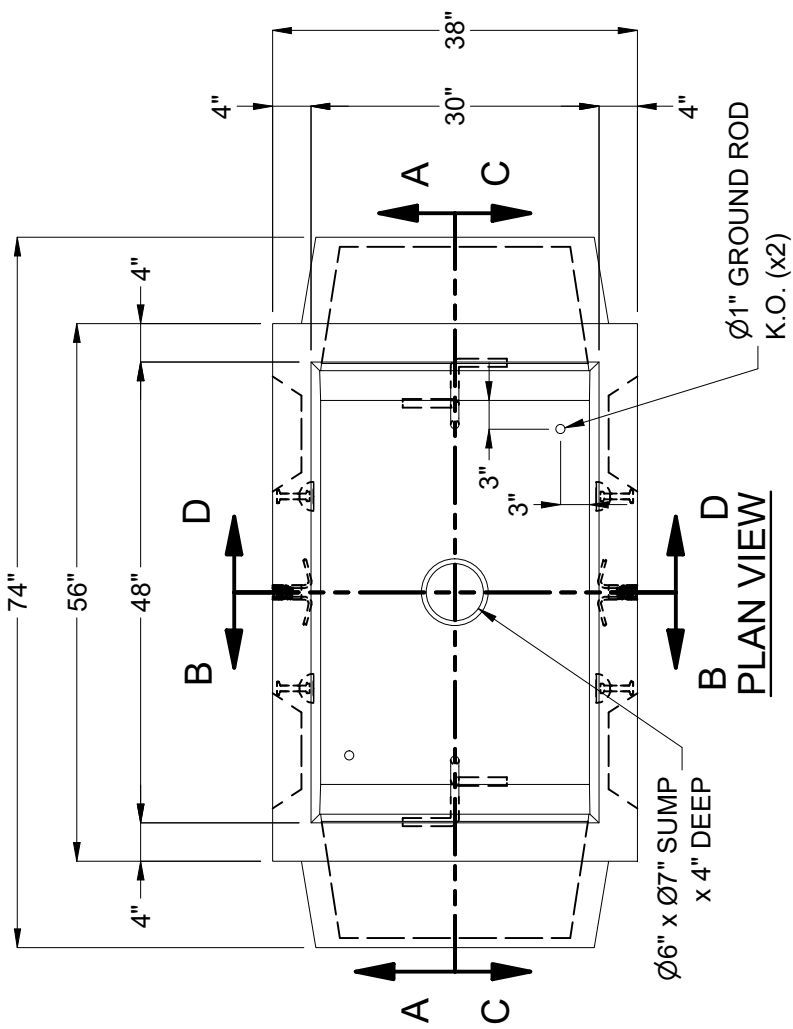
SECTION D-D

24" x 26" DUCTED K.O.
x 12" DEEP
DRAFT: T=S1=S2=1"
B=0"



SECTION C-C

8" x 16" K.O. x 3" DEEP
DRAFT 2" ALL SIDES TYP.



PLAN VIEW

BURY DEPTH:	0.0' - 0.0' to Top	DESCRIPTION:	Vault Layout 3048x42 Knockout Ducted, Sump 3048"C Edison UGS HP 220, PB-3 RPM	REV:	B-1
WATER LEVEL:	3.0'	APPROX. WEIGHT:	3742.75 Lbs	LAYOUT REVIEW	15
DESIGN SPEC:	ACI 318, ASTM C857	LOADING SPEC:	A-16 (AASHTO HS20-44)	DRAWN BY:	J. Prado
AGENCY:	Edison	AGENCY SPEC:	UGS HP 220, PB-3	MODIFIED:	6/12/2019
				CREATED:	4/5/2024
				PART NUMBER:	100010321
					2 OF 2

©2024 Jensen Precast. All rights reserved. All materials appearing as Jensen Precast documents and the like are proprietary work product and are protected under U.S. copyright and other laws. Unless in conjunction with business conducted with Jensen Precast, any use of Jensen Precast work product without express, written consent is prohibited, and recipient is prohibited from distributing any and all work product to non-approved third parties under penalty of civil action.

JENSEN PRECAST EST. 1968
WWW.JENSENPRECAST.COM