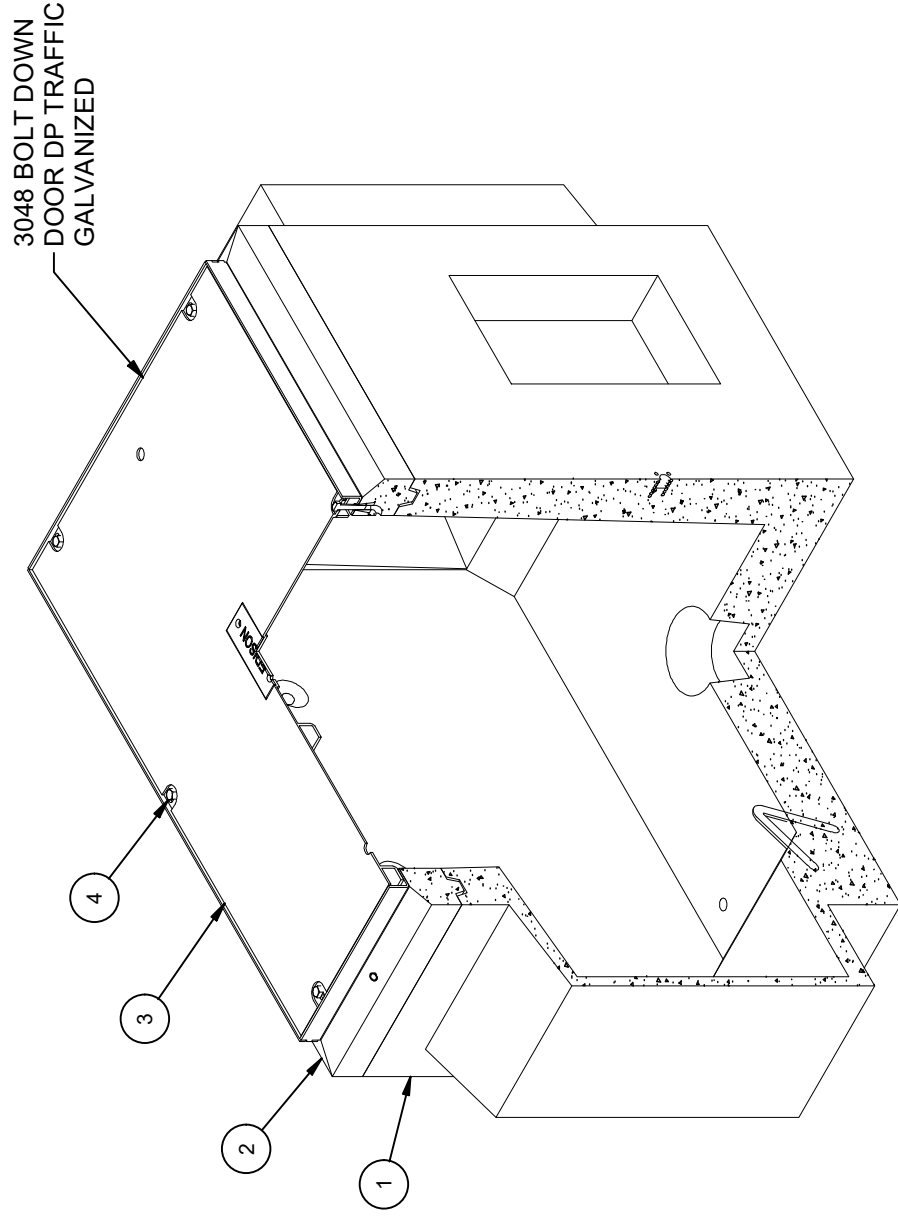


DESIGN NOTES

- DESIGNED IN ACCORDANCE WITH AASHTO HS20-44 TRAFFIC BRIDGE LOADING USING 5,500 PSI COMPRESSIVE STRENGTH CONCRETE AND 60,000 PSI YIELD STRENGTH ASTM A-706 STEEL REINFORCEMENT PER CALCS. #33230.
- COVER DESIGNED FOR 16,000 LB LOAD ON 10" X 20" FOOTPRINT, WITH 30% IMPACT RESTRICTED TO UNRESTRICTED PARKING LANES AND ALLEYS WHERE TRAFFIC SPEED IS LIMITED TO 15 MILES PER HOUR. (ASTM LOAD LEVEL 5)
- MINIMUM EXCAVATION SIZE: 4'-2" X 7'-2" X DEPTH REQ'D.
- VAULT TO BE PLACED ON A MIN. 6" BASE OF CRUSHER RUN FOR EASE OF INSTALLATION AND EVEN LOAD DISTRIBUTION.
- ALL PARTS TO BE STENCILED: MFG DATE / JOB NUMBER / PRODUCT ID / WEIGHT.
- FOR COMPLETE DESIGN AND PRODUCT INFORMATION CONTACT JENSEN PRECAST.

BILL OF MATERIALS

ITEM	UNIT QTY	QTY	PART NUMBER	DESCRIPTION	MASS (lb)
1	1	1	100012156	Vault 3048x36 Rect. Bottom Section Knockout Ducted,Sump EDISON UGS HP 220, PB-4	3206
2	1	1	100012151	Top Riser 3048x6 Cast-In Frame LADWP	277
3	1	1	100006634	DOOR 3048 INC DP GALV TGV	250
4	1	6	100007123	PENTA BOLT 1/2-13 UNC 2-1/2 7/8HEAD 304SS	
5	1	1	100006743	NAME PLATE SS - EDISON	
6	1	1	100007650	NAME PLATE HARDWARE KIT	
7	1.000 ul	1.000 ul	100005749	SEALANT JOINT BUTYL RUBBER ASTM C-990 AND M198 CS-102 1IN EQUIV X14.5FT PER BOX 118FT	



ISOMETRIC VIEW

LIFTING NOTES

FIELD INSTALLATION: PLANT DEMOLDING: MINIMUM HANDLING CONCRETE STRENGTH F _c = 5500 PSI RIGGING EQUALIZER REQUIRED TO EQUALIZE LOAD TO 4 LIFTING POINTS WITH A SLING ANGLE BETWEEN 60° AND 90°	
BURY DEPTH:	0.0' - 0.0' to Top
WATER LEVEL:	3.0'
DESIGN SPEC:	ACI 318,ASTM C857
AGENCY:	Edison
APPROX. WEIGHT:	3734.35 Lbs
LOADING SPEC:	A-16 (AASHTO HS20-44)
AGENCY SPEC:	UGS HP 220, PB-4



EST. 1968

WWW.JENSENPRECAST.COM

©2024 Jensen Precast-All rights reserved. All materials appearing as Jensen Precast documents and the like are proprietary work product and are protected under U.S. copyright and other laws. Unless in conjunction with business conducted with Jensen Precast, any use of Jensen Precast work product without express, written consent is prohibited, and recipient is prohibited from distributing any and all work product to non-approved third parties under penalty of civil action.

REVISION HISTORY

REV	DESCRIPTION	DATE	APPROVED
B-1	INITIAL RELEASE INVENTOR	4/1/2024	

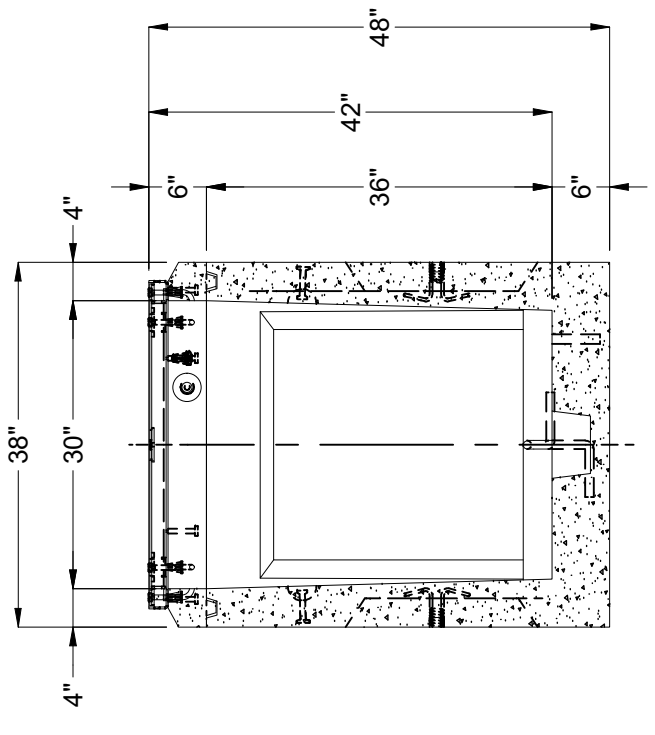
DESCRIPTION:

Vault Layout 3048x42 Knockout Ducted,Sump 3048°C Edison UGS HP 220, PB-4 Traffic

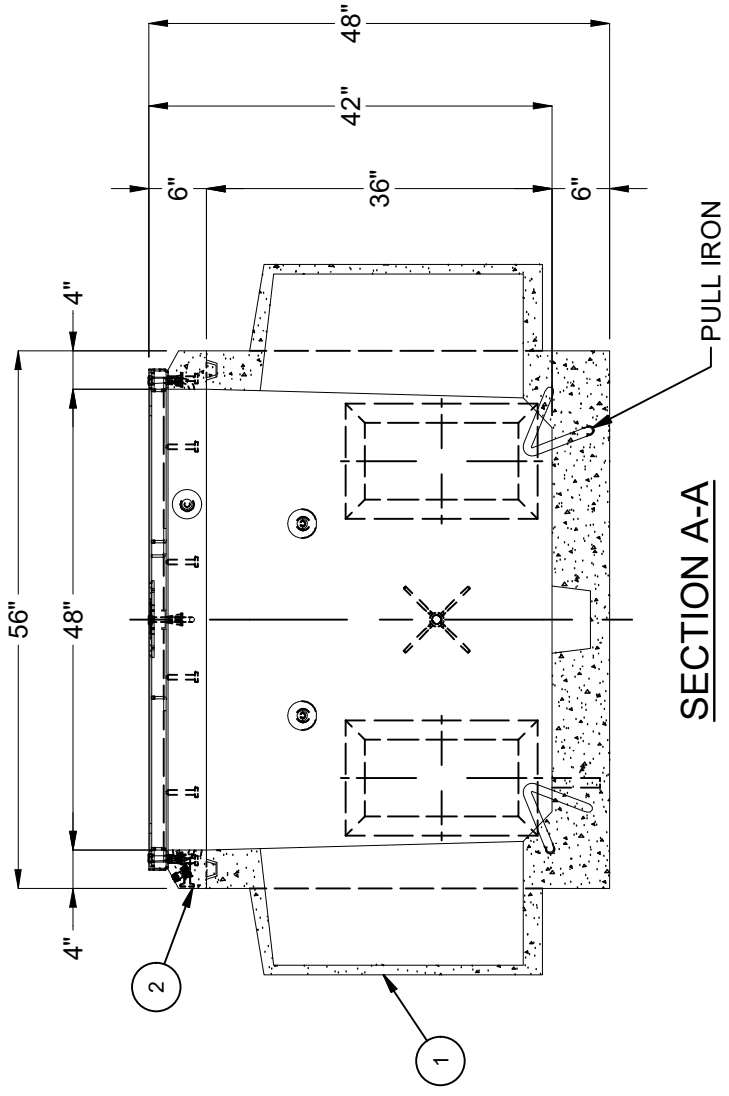
LAYOUT DRAWING

PART NUMBER:	100010322	DRAWN BY:	J. Prado
CREATED:	6/12/2019	MODIFIED:	4/1/2024

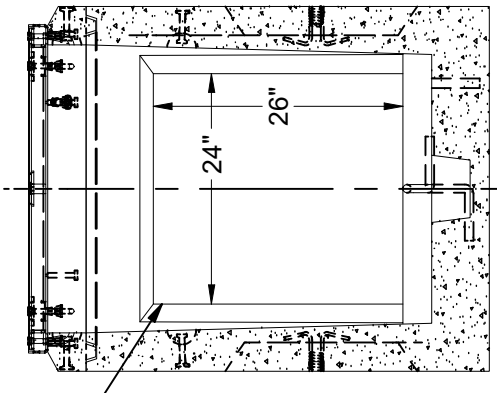
REV: B-2
SHEET: 16
1 OF 2



SECTION B-B

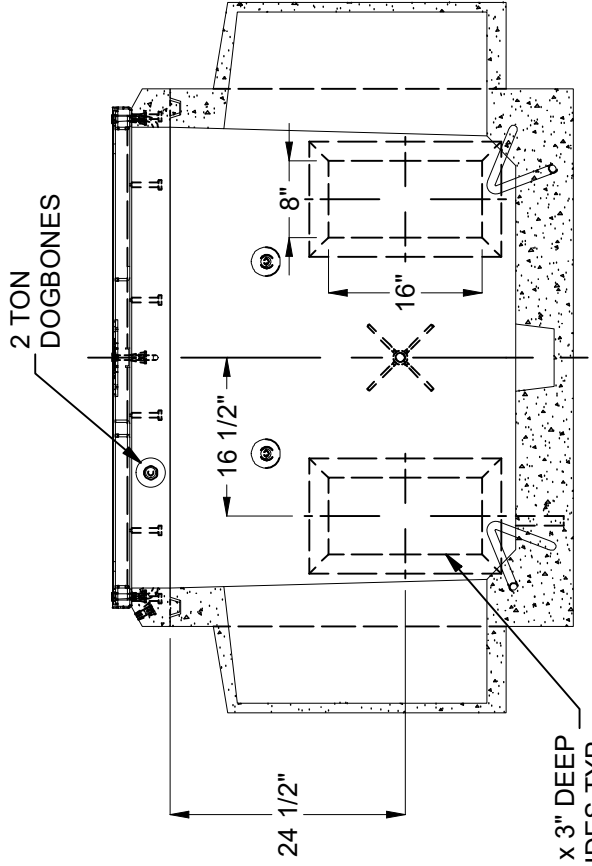


SECTION A-A



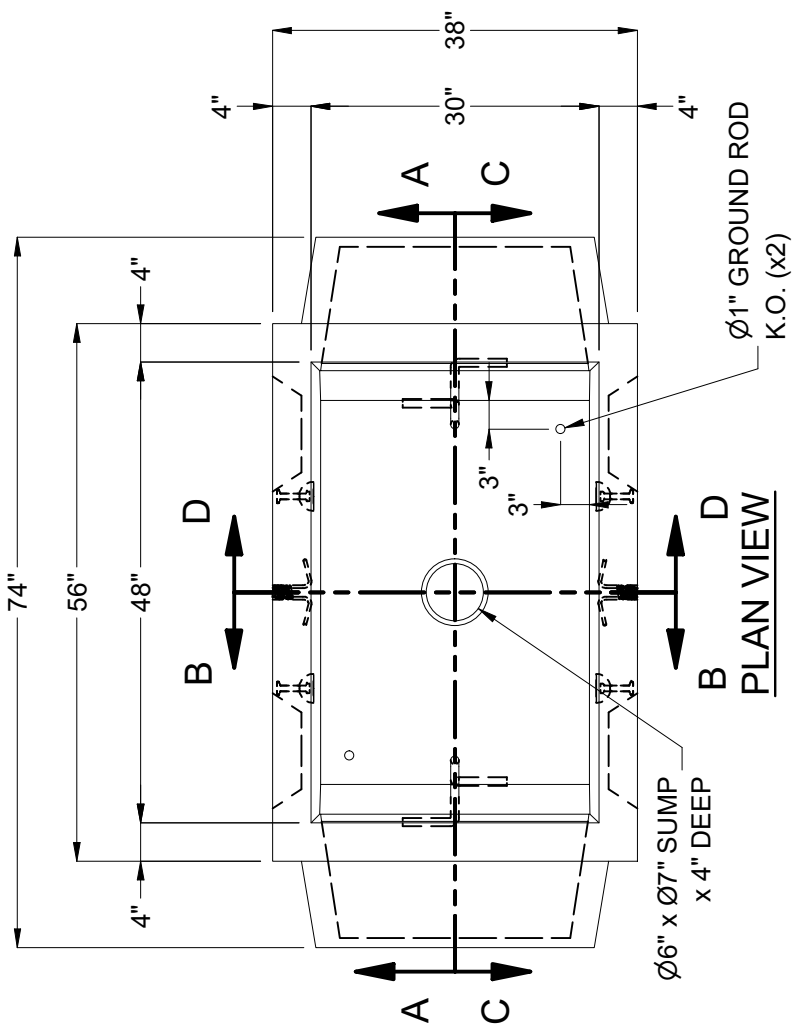
SECTION D-D

25" x 26" DUCTED K.O.
x 12" DEEP
DRAFT: T=S1=S2=1"
B=0"



SECTION C-C

8" x 16" K.O. x 3" DEEP
DRAFT 2" ALL SIDES TYP.



PLAN VIEW

BURY DEPTH:	0.0' - 0.0' to Top	DESCRIPTION:	Vault Layout 3048x42 Knockout Ducted, Sump 3048°C Edison UGS HP 220, PB-4 Traffic	REV:	B-2
WATER LEVEL:	3.0'	APPROX. WEIGHT:	3734.35 Lbs	LAYOUT REVIEW	17
DESIGN SPEC:	ACI 318, ASTM C857	LOADING SPEC:	A-16 (AASHTO HS20-44)	DRAWN BY:	J. Prado
AGENCY:	Edison	AGENCY SPEC:	UGS HP 220, PB-4	MODIFIED:	4/1/2024
			©2024, Jensen Precast. All rights reserved. All materials appearing as Jensen Precast documents and the like are proprietary work product and are protected under U.S. copyright and other laws. Unless in conjunction with business conducted with Jensen Precast, any use of Jensen Precast work product without express, written consent is prohibited, and recipient is prohibited from distributing any and all work product to non-approved third parties under penalty of civil action.	PART NUMBER:	100010322
			WWW.JENSENPRECAST.COM	CREATED:	6/12/2019