

2'-6" x 4'-0" HEAVY TRAFFIC DUCTED PULL BOX x 3'-8" DEEP

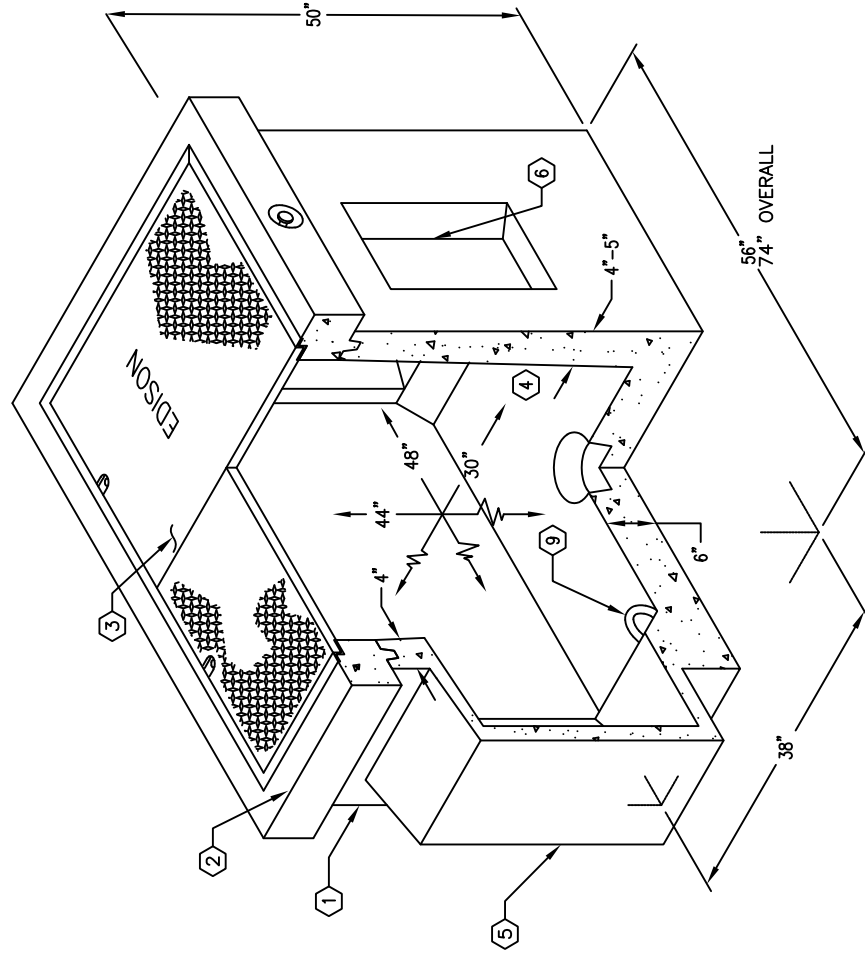
NOTES:

- PULL BOX DESIGNED IN ACCORDANCE WITH AASHTO H-20-44 TRAFFIC BRIDGE LOADING USING 5,500 P.S.I. COMPRESSIVE STRENGTH CONCRETE AND 60,000 P.S.I. YIELD STRENGTH ASTM A-706 STEEL REINFORCING. PER CALC. #31603.
- CAST IRON COVER DESIGNED FOR H-20-44 HEAVY TRAFFIC LOADING.
- PULL BOX TO BE PLACED ON A MIN 6" BASE OF CRUSHER RUN FOR EASE OF INSTALLATION AND EVEN LOAD DISTRIBUTION.

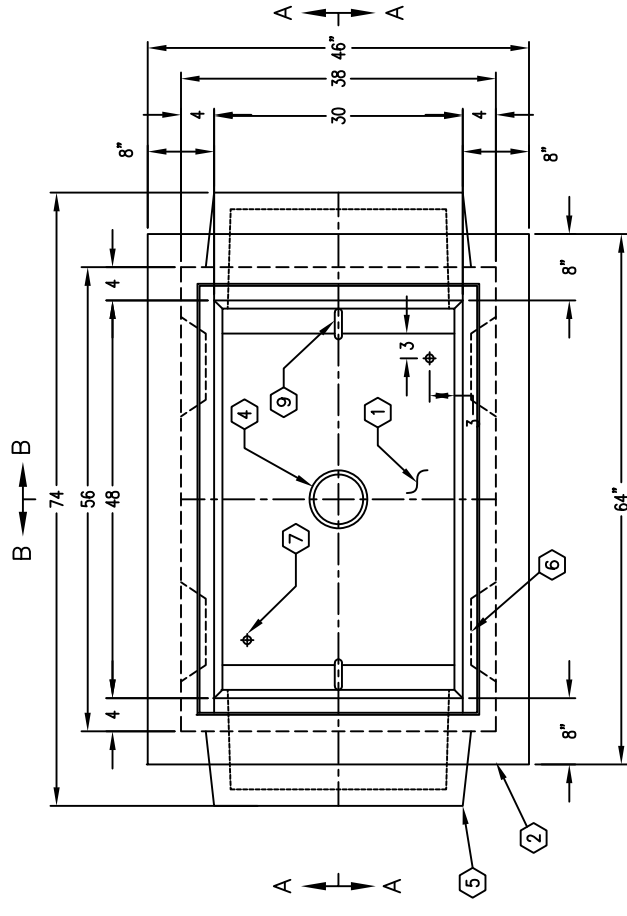
ORDERING INFORMATION:

PER EDISON SPEC. HP220, PB-5
 K3048DP44-TCI-11 FOR ASSEMBLY AS SHOWN
 TOTAL WEIGHT OF ASSEMBLY SHOWN IS 4,860 lbs.

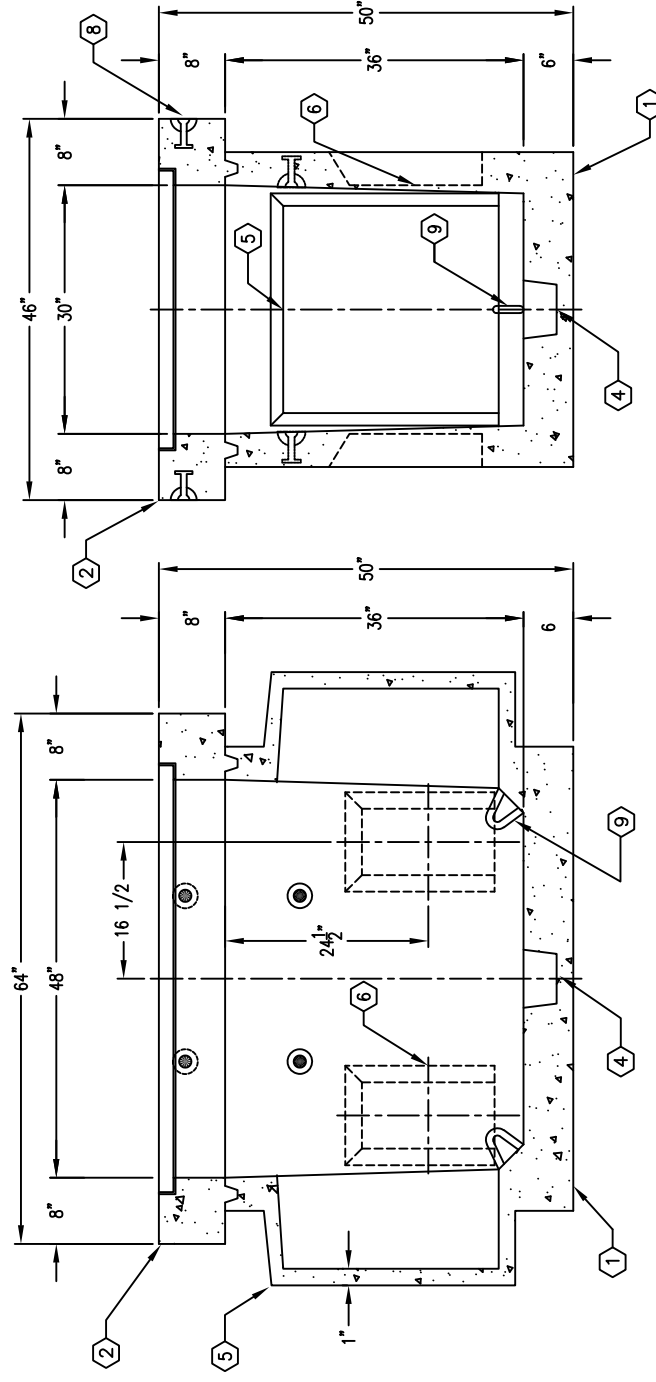
1. PB3048D-B36-05, 36" BOTTOM SECTION, WT. 2,936 lbs.
2. PB3048-T8-11, 8" TOP SLAB (CG-3048-T8-11 (XXX), W/CAST IRON FRAME A-1473 CAST IN. WT. 1,180 lbs.
3. ALHAMBRA FOUNDRY A-1473 TRAFFIC CAST IRON FRAME CAST IN TOP SECTION W/ TWO PIECE C.I. COVER 'EDISON' (06-40-11). WT. 740 Lbs.
4. 6" x 7" DIA. SUMP x 4" DEEP, BOTTOM SECTION.
5. 25" x 26" DUCTED K.O. x 12" DEEP, BOTTOM SECTION.
6. 8" x 16" K.O. x 3" DEEP, BOTTOM SECTION.
7. 1" DIA. BLIND GROUND ROD HOLE, BOTTOM SECTION.
8. 2 TON RISS ANCHOR x 5 1/2", TOP SLAB (4) SHELL MTD. BOTTOM SECTION (4) CORE MTD.
9. 7/8" DIA. x 9" GALV. VERTICAL PULL IRON, BOTTOM SECTION.



MINIMUM EXCAVATION SIZE:
 4'-2" x 7'-2" x DEPTH REQ'D.



PLAN VIEW



SECTION A-A

SECTION B-B