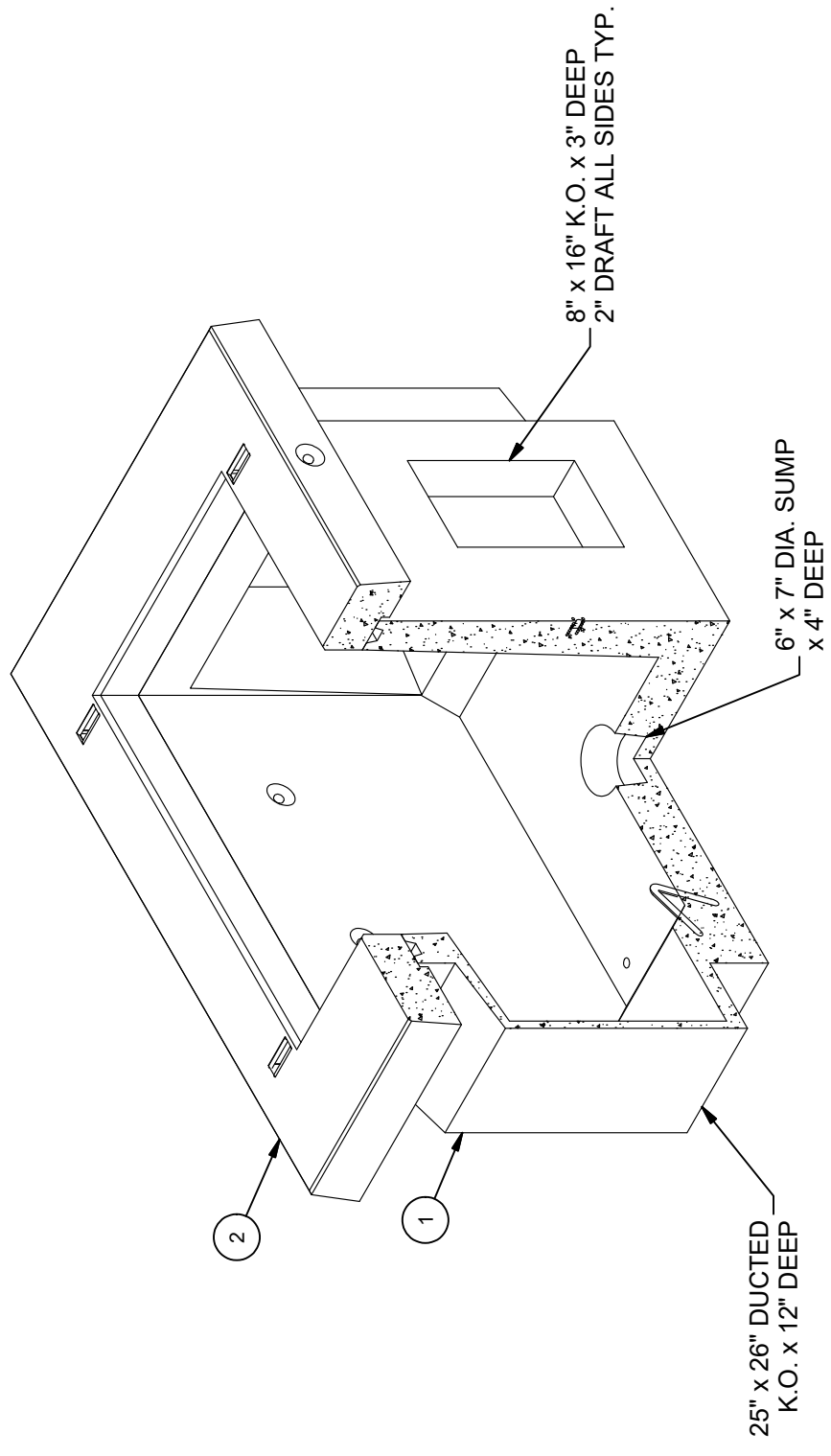


DESIGN NOTES

- DESIGNED IN ACCORDANCE WITH AASHTO HS20-44 TRAFFIC BRIDGE LOADING USING 5,500 PSI COMPRESSIVE STRENGTH CONCRETE AND 60,000 PSI YIELD STRENGTH ASTM A-706 STEEL REINFORCEMENT PER CALCS. #30750.
- PULL BOX TO BE PLACED ON A MIN. 6" BASE OF CRUSHER RUN FOR EASE OF INSTALLATION AND EVEN LOAD DISTRIBUTION.
- MINIMUM EXCAVATION SIZE: 5'-1" X 7'-2" X DEPTH REQD.
- ALL PARTS TO BE STENCILED: MFG DATE / JOB NUMBER / PRODUCT ID / WEIGHT.
- FOR COMPLETE DESIGN AND PRODUCT INFORMATION CONTACT JENSEN PRECAST.

BILL OF MATERIALS

ITEM	UNIT QTY	QTY	PART NUMBER	DESCRIPTION	MASS (lb)
1	1	1	100012156	Vault 3048x36 Rect. Bottom Section Knockout Ducted, Sump EDISON UGS HP 220, PB-4	3206
2	1	1	100012262	Pad PD4872x6 EDISON UGS SS591	1048
3	1,000 ul	1,000 ul	100005749	SEALANT JOINT BUTYL RUBBER ASTM C-990 AND M198 CS-102 1IN EQUIV X14.5FT PER BOX 118FT	



ISOMETRIC VIEW

LIFTING NOTES

FIELD INSTALLATION: PLANT DEMOLING: MINIMUM HANDLING CONCRETE STRENGTH F<sub>c</sub> = 5500 PSI RIGGING EQUALIZER REQUIRED TO EQUALIZE LOAD TO 4 LIFTING POINTS WITH A SLING ANGLE BETWEEN 60° AND 90°

BURY DEPTH:	-0.3' - 0.3' to Top
WATER LEVEL:	3.0'
DESIGN SPEC:	ASTM C857, ACI 318
AGENCY:	EDISON
APPROX. WEIGHT:	4254.13 Lbs
LOADING SPEC:	A-16 (AASHTO HS20-44)
AGENCY SPEC:	UGS SS591, PH-2



EST. 1968

WWW.JENSENPRECAST.COM

©2022 Jensen Precast. All rights reserved. All materials appearing as Jensen Precast documents and the like are proprietary work product and are protected under U.S. copyright and other laws. Unless in conjunction with business conducted with Jensen Precast, any use of Jensen Precast work product without express, written consent is prohibited, and recipient is prohibited from distributing any and all work product to non-approved third parties under penalty of civil action.

REVISION HISTORY

REV	DESCRIPTION	DATE	APPROVED
B-2	RELEASE IN INVENTOR	12/5/2022	

DESCRIPTION: Vault 3048 Layout Assembly EDISON UGS SS591, PH-2

REV: B-2

PART NUMBER: 100010337 LAYOUT REVIEW

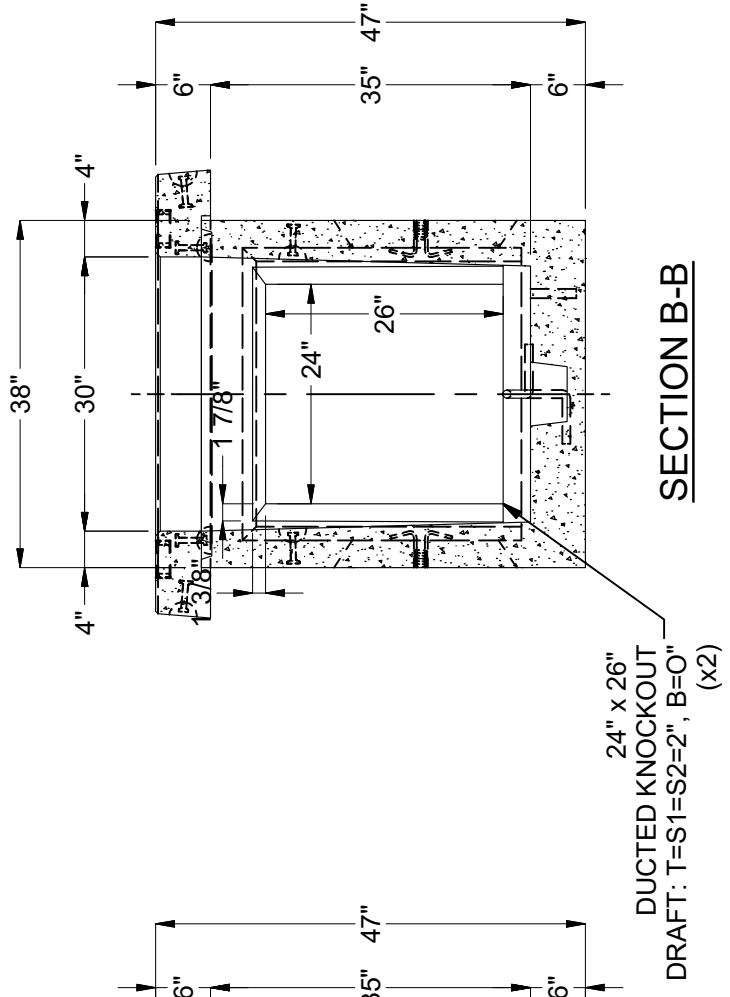
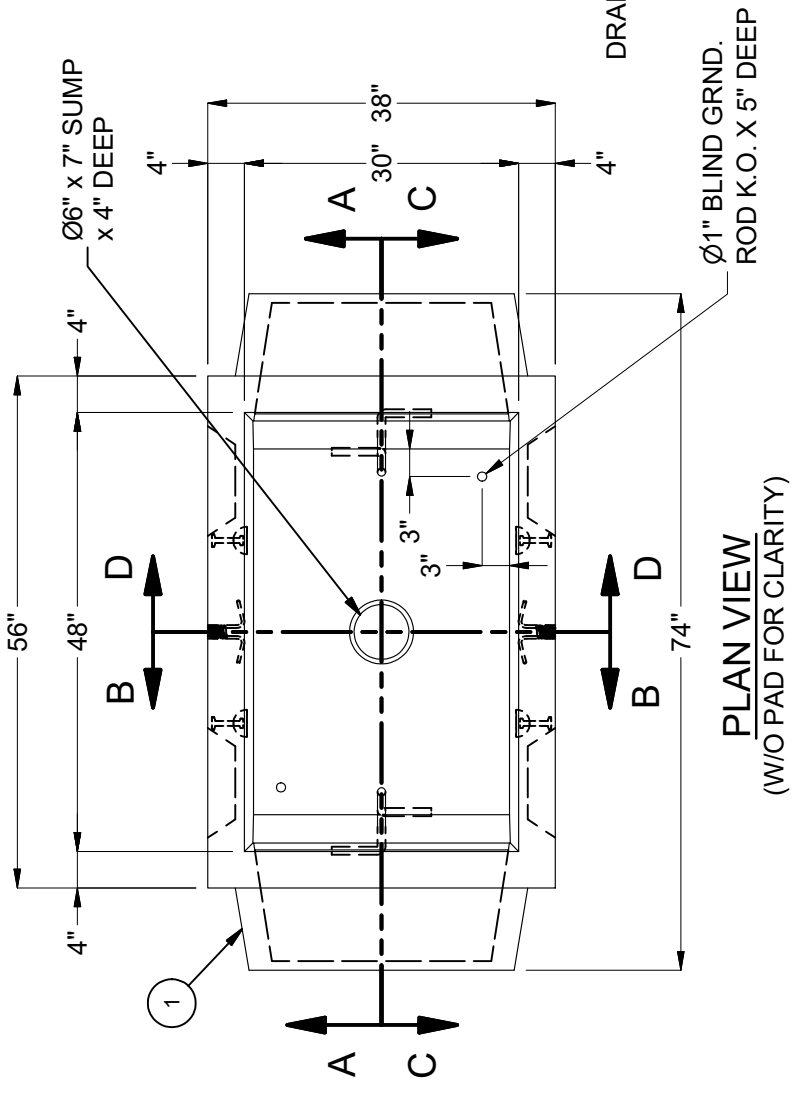
CREATED: 10/12/2020 DRAWN BY: S. Rodarte

MODIFIED: 12/5/2022

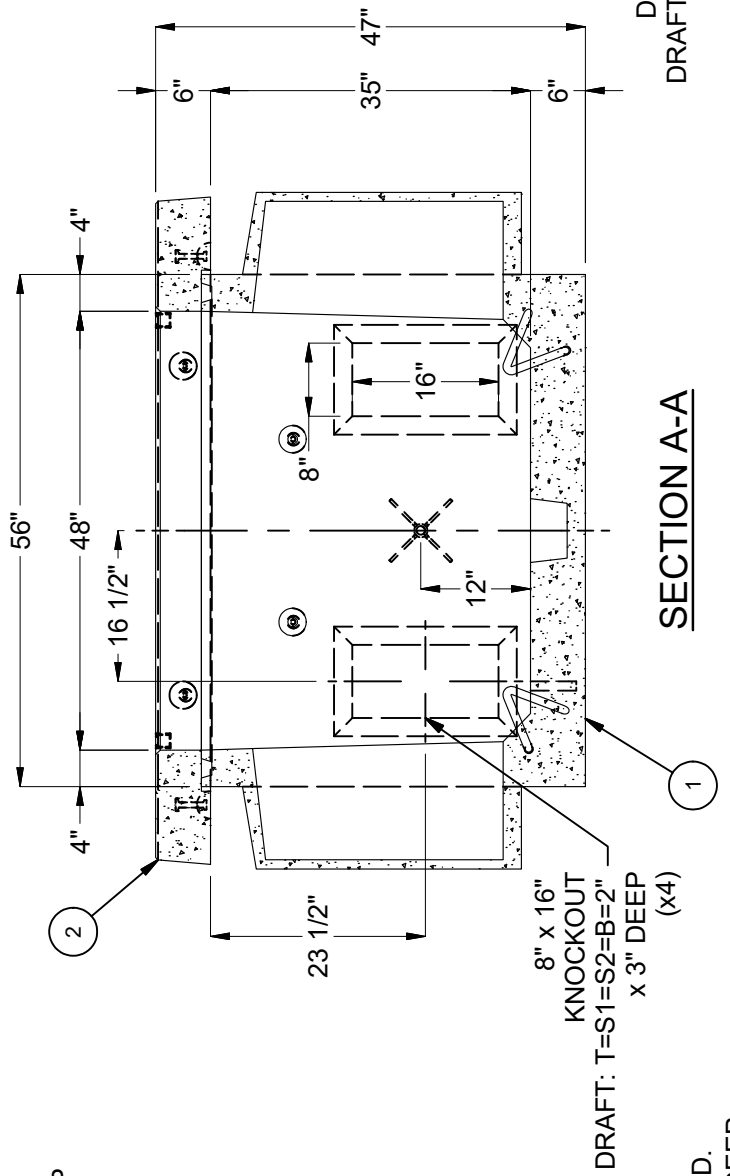
SHEET: 56

1 OF 2

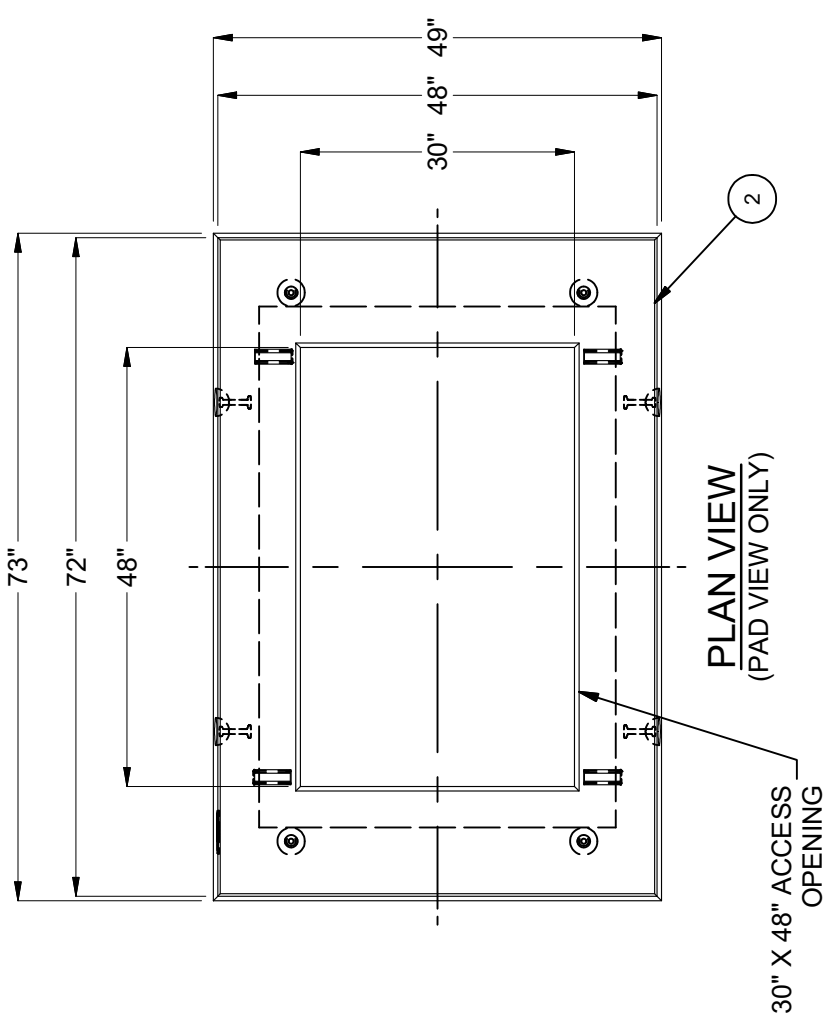
10010337.rvt



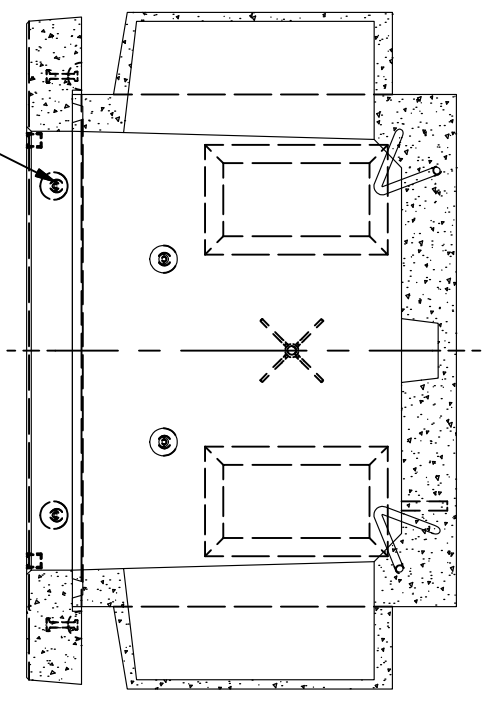
DUCTED KNOCKOUT  
24" x 26"  
DRAFT: T=S1=S2=2", B=0"  
(x2)



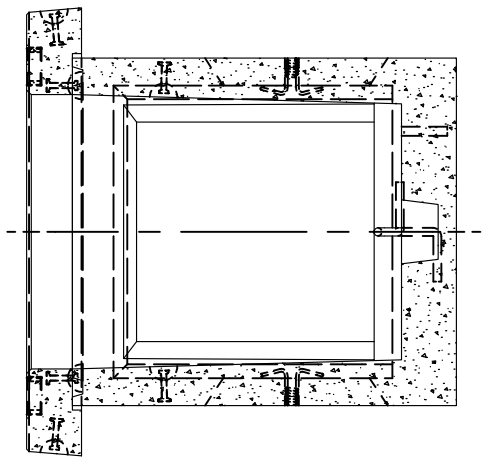
SECTION A-A



2 TON DOGBONES



SECTION C-C



SECTION D-D

BURY DEPTH:	-0.3' - -0.3' to Top
WATER LEVEL:	3.0'
DESIGN SPEC:	ASTM C857, ACI 318
AGENCY:	EDISON
APPROX. WEIGHT:	4254.13 Lbs
LOADING SPEC:	A-16 (AASHTO HS20-44)
AGENCY SPEC:	UGS SS591, PH-2

**JENSEN PRECAST** EST. 1968  
[WWW.JENSENPRECAST.COM](http://WWW.JENSENPRECAST.COM)

DESCRIPTION: Vault 3048 Layout Assembly EDISON UGS SS591, PH-2  
 LAYOUT REVIEW  
 PART NUMBER: 100010337  
 DRAWN BY: S. Rodarte  
 CREATED: 10/12/2020  
 MODIFIED: 12/5/2022

©2022 Jensen Precast. All rights reserved. All materials appearing as Jensen Precast documents and the like are proprietary work product and are protected under U.S. copyright and other laws. Unless in conjunction with business conducted with Jensen Precast, any use of Jensen Precast work product without express, written consent is prohibited, and recipient is prohibited from distributing any and all work product to non-approved third parties under penalty of civil action.