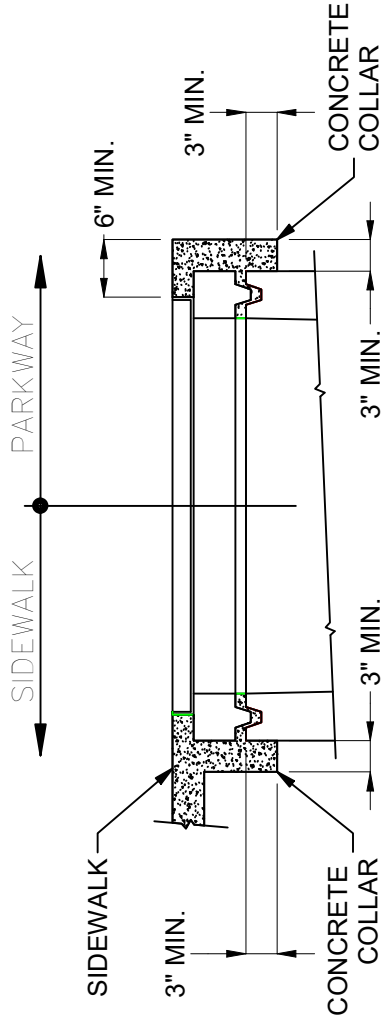


DESIGN NOTES

- STANDARDS, AASHTO LRFD BRIDGE DESIGN SPECIFICATIONS, 8TH EDITION, WITH 2022 CALTRANS AMENDMENTS, CITY OF LOS ANGELES BUREAU OF ENGINEERING STANDARD PLAN S-601, LATEST, MANUAL PART H, ASTM C-857. STRUCTURAL CALCS. #33881.
- MATERIAL: CONCRETE, F' c=5,500 PSI. MIX TO INCLUDE FLY ASH, REINFORCEMENT PER ASTM A-706, Fy=60,000.
- LOADS: VERTICAL LIVE LOAD: AASHTO HL-93. LIVE LOAD SURCHARGE: LA BOE PART H, FIGURE H 374.2A, MINIMUM 80 PSF (TO BOTTOM OF VAULT). SOIL LATERAL LOADS: 40 PCF (DRY), 81 PCF (SATURATED), SATURATED SOIL CONDITIONS 3'-0" BELOW GRADE. CUSTOMER TO VERIFY A MIN. SOIL BEARING = 1500 PSF SOIL BEARING CAPACITY IS DESIGNED FOR PARKWAY RATED LOADS AND NOT HL-93 LOADS. DESIGN SOIL DENSITY IS 120 PCF
- LOADS NOT INCLUDED: DESIGN DOES NOT INCLUDE COOPER E-80 RAILROAD LOADS OR LATERAL OR SURCHARGE LOADS THAT ARE PRODUCED BY FOOTING OR FOUNDATIONS ADJACENT TO THE STRUCTURE. THIS SUBSTRUCTURE SHALL BE KEPT AT LEAST IN A 1:1 RATIO AWAY FROM ALL FOOTINGS AND FOUNDATIONS. UNLESS THE ENGINEER OF RECORD APPROVES IN WRITING.
- INSTALLATION: VAULT TO BE PLACED ON A MIN. 6" BASE OF CRUSHER RUN FOR EASE OF INSTALLATION AND EVEN LOAD DISTRIBUTION. BASE MATERIAL IN ACCORDANCE WITH SECTION 200-2 OF THE SSPWC (GREEN BOOK).
- INSTALLATION LIMITS. TOP OF VAULT SHALL BE AT GRADE. VAULT MAY HAVE AN INTERIOR CONCRETE HEIGHT OF 48" TO 72".
- EACH CONCRETE SECTION SHALL BE MARKED ON THE INSIDE & OUTSIDE WITH "JENSEN PRECAST", AND THE DATE OF POUR.
- COVER DESIGNED FOR PARKWAY LOADING. (SC3660-PSRGV) 2-PIECE PARKWAY BOLT-DOWN GALVANIZED STEEL COVERS APPROVED BY CITY OF L.A.
- NO SHARP OR ROUGH EDGES ON THE TERMINATORS ENTERING THE VAULT.
- MINIMUM EXCAVATION SIZE: 4'-9" X 6'-9" X DEPTH REQD.
- EACH PIECE TO BE STENCILED WITH ITS PART NO.
- ADDITIONAL SUBMITTAL, PERMIT AND CONSTRUCTION PLAN REVIEW WILL BE REQUIRED FOR EACH PROJECT LOCATION. SUBMIT TO CITY ENGINEER FOR APPROVAL PRIOR TO START OF ANY CONSTRUCTION.
- ALL INSTALLATIONS SHALL COMPLY WITH ALL OTHER LOCAL GOVERNING CODES AND REGULATIONS INCLUDING CALIFORNIA PUBLIC UTILITIES COMMISSION REGULATIONS.
- FOR COMPLETE DESIGN AND PRODUCT INFORMATION CONTACT JENSEN PRECAST.



INSTALLATION NOTES:

- CONTINUOUS CONCRETE COLLAR FOUR SIDES.
- WHERE THERE IS SIDEWALK, COLLAR TO BE MONOLITHIC WITH SIDEWALK.
- FLUSH WITH ADJACENT TOP OF CURB AND/OR LANDSCAPE BACKFILL WITHIN 1/4"

LIFTING NOTES

- THIS CONCRETE PRODUCT IS DESIGNED TO BE LIFTED AT 5,500 PSI WITH 4 LIFT CONNECTIONS EQUALLY LOADED TO 4 LIFTING POINTS AT A MINIMUM 60° SLING ANGLE, MEASURED FROM HORIZONTAL.

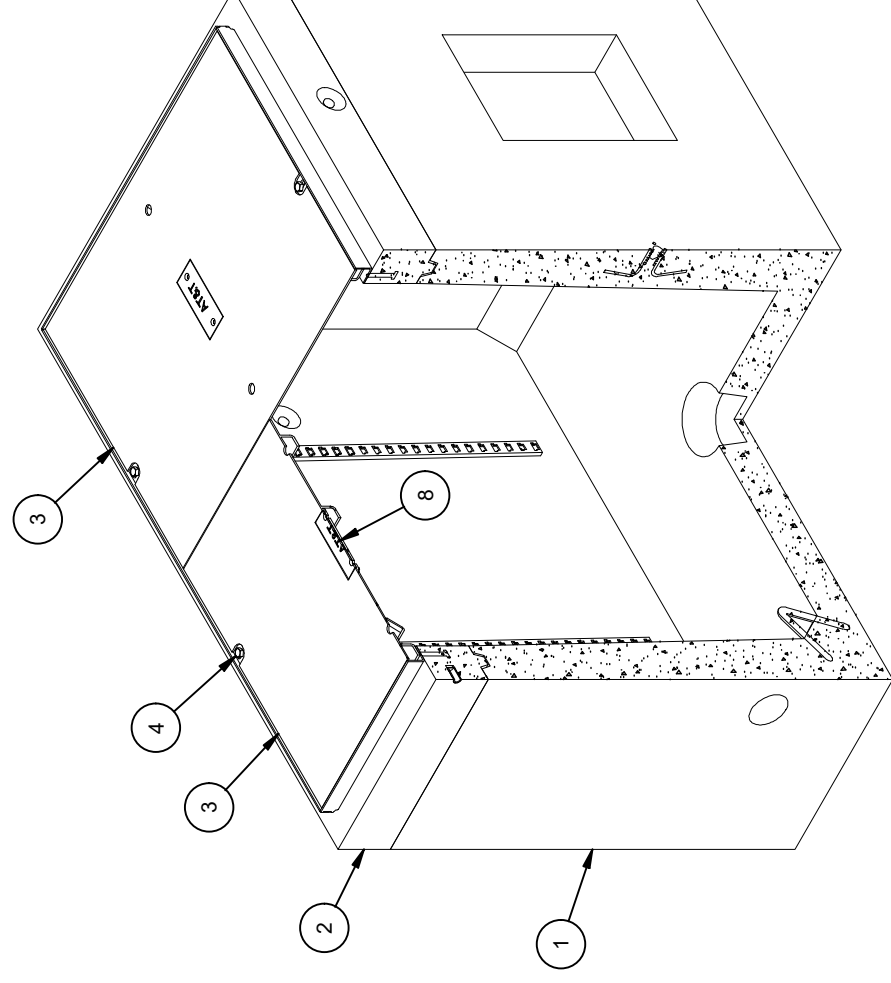
BURY DEPTH:	0.0' - 0.0' to Top
WATER LEVEL:	3.0'
APPROX. WEIGHT:	5599.5 Lbs
DESIGN SPEC:	AASHTO LRFD/ACI 318, ASTM C857
LOADING SPEC:	AASHTO HL-93
AGENCY SPEC:	AT&T
AGENCY:	COLA INSPECTED

BILL OF MATERIALS

ITEM	UNIT QTY	QTY	PART NUMBER	DESCRIPTION	MASS (lb)
1	1	1	100012244	Vault 3660x42 Rect. Bottom Section Knockout, Terminators Sump AT&T COLA	4742
2	1	1	100012213	Top Riser 3660x6 Cast-In Frame AT&T COLA	559
3	1	2	100009866	COVER 3660 STEEL S/R B/D PKWY GALV COLA INSPECTED	142
4	1	4	100007123	PENTA BOLT 1/2-13 UNC 2-1/2 7/8HEAD 304SS	
5	1	4	100002529	CABLE RACK 24 HOLE GALV W/O TABS	
6	1	8	100022504	HEX BOLT, TAP, 1/2-13 UNC 2.5 ZINC	
7	1	8	100002658	WASHER FLAT 1/2 REGULAR TYPE A ZINC	
8	1	2	100006738	NAME PLATE SS - AT&T	
9	1	2	100007650	NAME PLATE HARDWARE KIT	
10	14,000 ft	14,000 ft	100007104	BONDING RIBBON 3/8 12A55	
11	1,000 ul	1,000 ul	100005749	SEALANT JOINT BUTYL RUBBER ASTM C-990 AND M198 CS-102 1IN EQUIV X14.5FT PER BOX 118FT	

EXTENSIONS ARE AVAILABLE IN THE FOLLOWING SIZES:

- A. 200078770 (PB3660-R6-LA-14COLA), 6" EXTENSION SECTION (CG-PB3660-R6-LA-14) WT. 480 lbs.
- B. 200077010 (PB3660-R12-LA-14COLA), 12" EXTENSION SECTION (CG-PB3660-R12-LA-14) WT. 971 lbs.



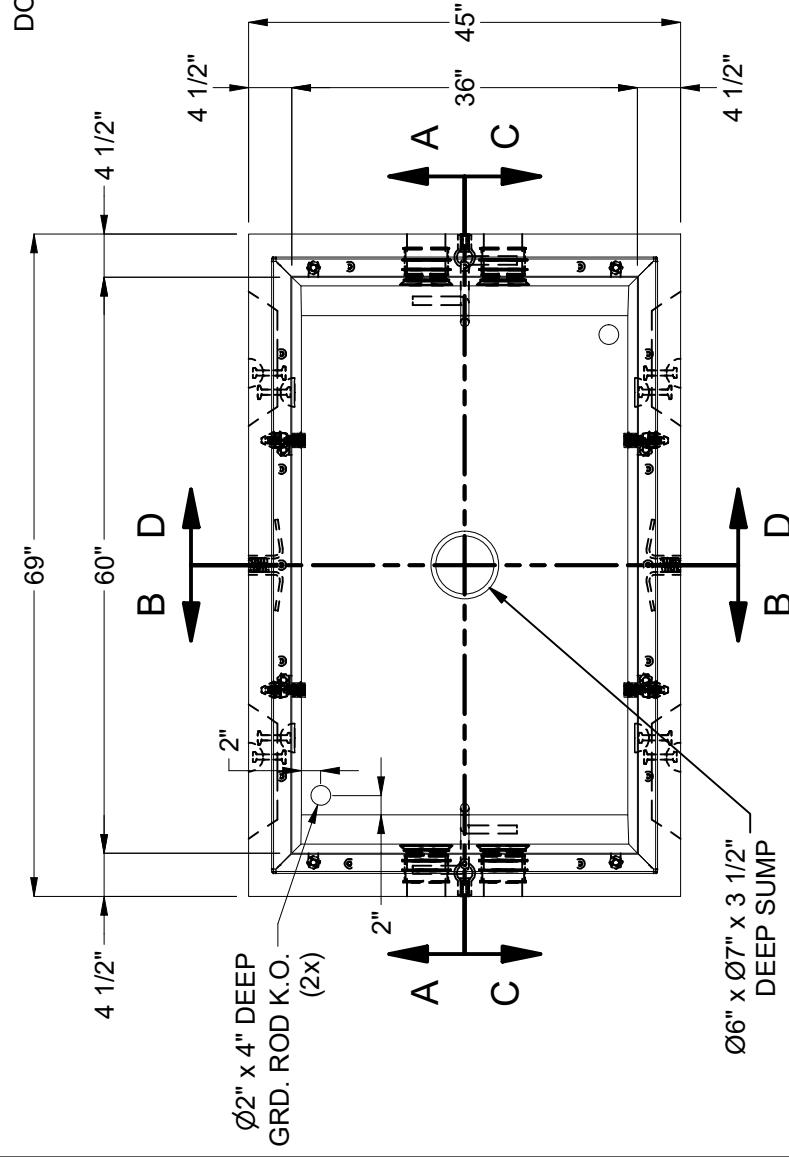
ISOMETRIC VIEW

STOCKPILE - JENSEN PRECAST
CITY OF LOS ANGELES INSPECTION
REQUIRED WO# C0034604

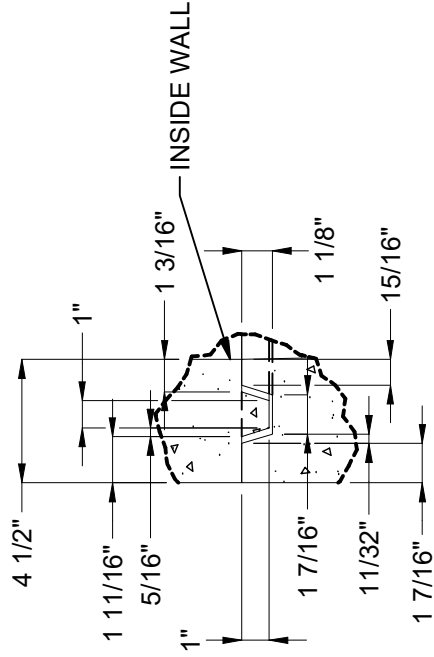
©2023 Jensen Precast. All rights reserved.
All materials appearing as Jensen Precast documents and the like are proprietary work product and are protected under U.S. copyright and other laws.
Unless in conjunction with business conducted with Jensen Precast, any use of Jensen Precast work product without express, written consent is prohibited, and recipient is prohibited from distributing any and all work product to non-approved third parties under penalty of civil action.

REV	DESCRIPTION	DATE	APPROVED
B-2	INITIAL RELEASE IN INVENTOR	11/10/2023	

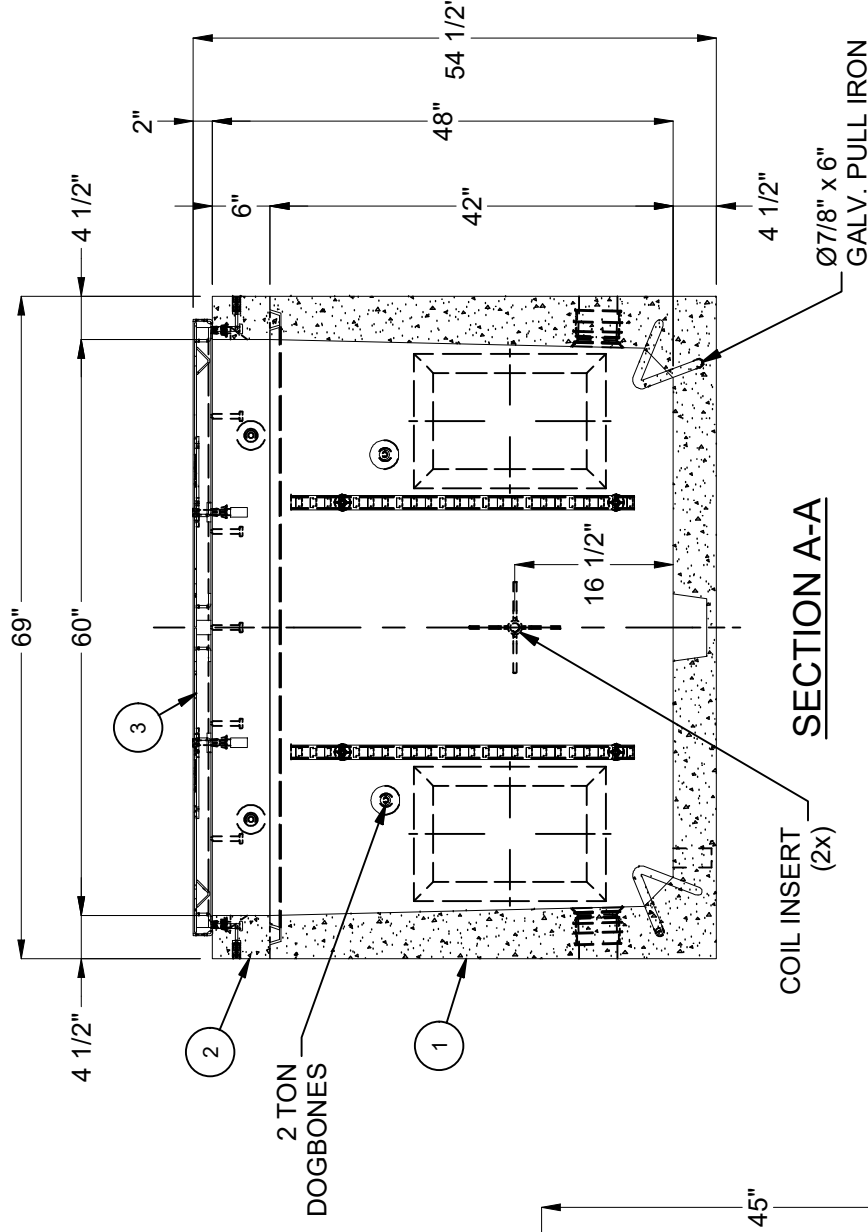
DESCRIPTION:	Vault Layout 3660x48 AT&T COLA INSPECTED
REV:	B-2
PART NUMBER:	100010385
CREATED:	7/28/2020
LAYOUT REVIEW	
DRAWN BY:	S. Woods
MODIFIED:	11/10/2023
SHEET:	1 OF 2



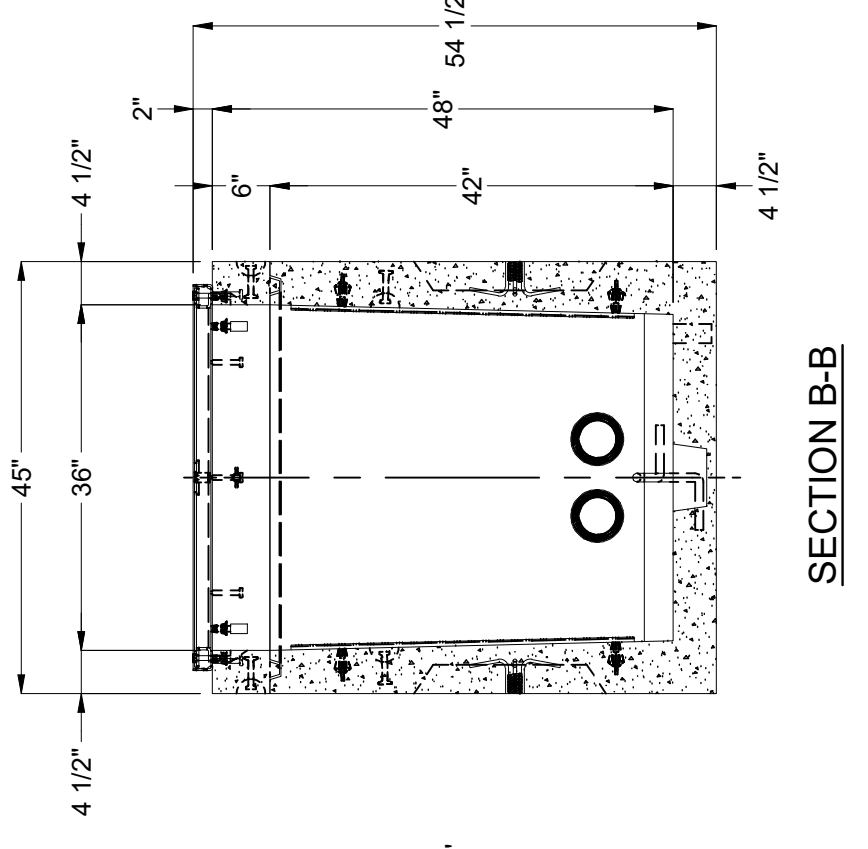
PLAN VIEW
(COVER NOT SHOWN FOR CLARITY)



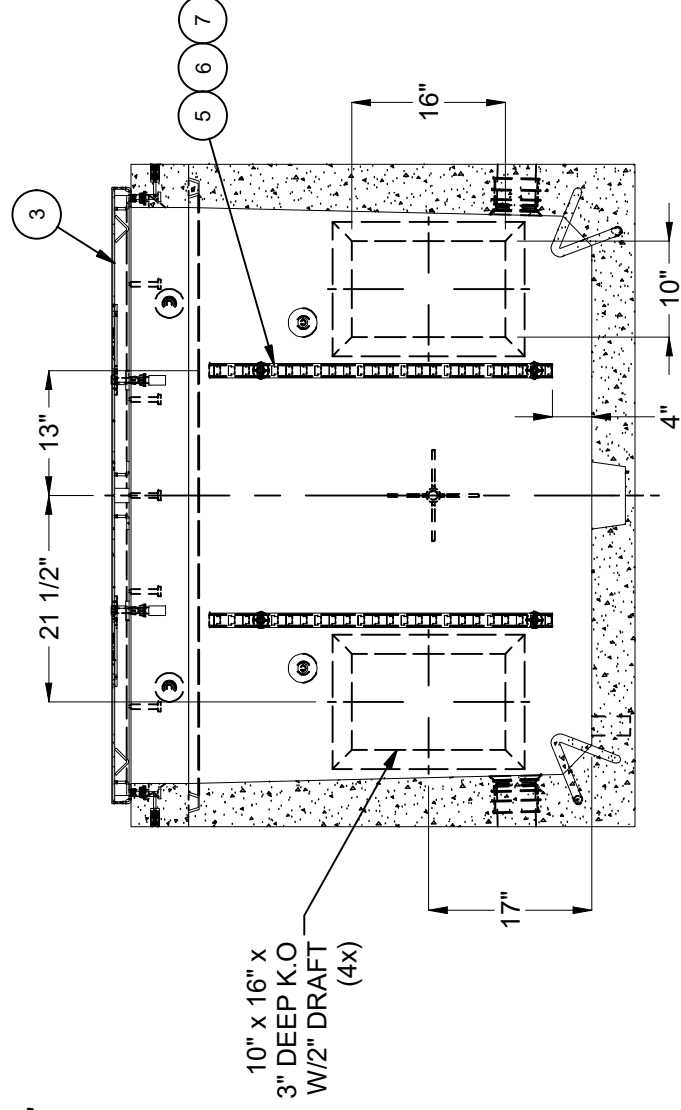
DETAIL E
(JOINT DETAIL-WALL)



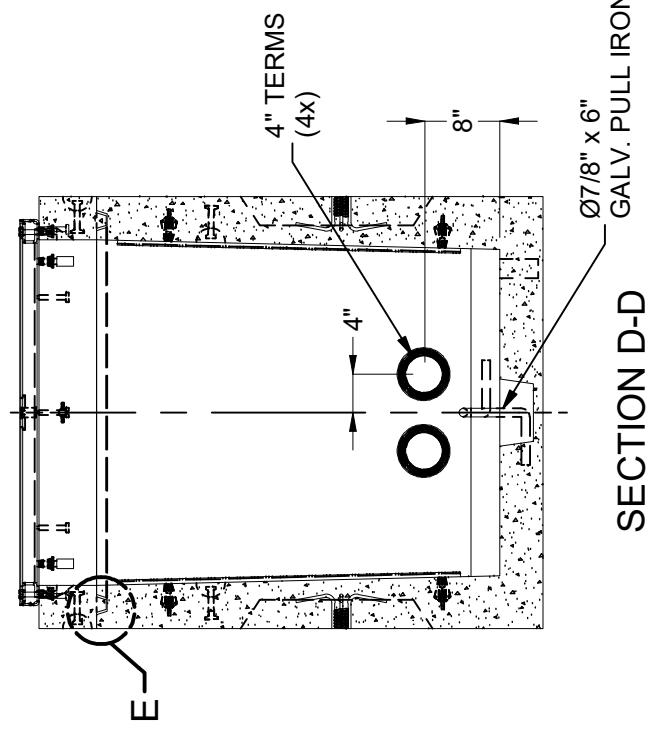
SECTION A-A



SECTION B-B



SECTION C-C



SECTION D-D

BURY DEPTH:	0.0' - 0.0' to Top
WATER LEVEL:	3.0'
DESIGN SPEC:	AASHTO LRFD/ACI 318, ASTM C857
AGENCY:	AT&T
APPROX. WEIGHT:	5599.5 Lbs
LOADING SPEC:	AASHTO HL-93
AGENCY SPEC:	COLA INSPECTED

JENSEN PRECAST EST. 1968
WWW.JENSENPRECAST.COM

©2023 Jensen Precast. All rights reserved. All materials appearing as Jensen Precast documents and the like are proprietary work product and are protected under U.S. copyright and other laws. Unless in conjunction with business conducted with Jensen Precast, any use of Jensen Precast work product without express, written consent is prohibited, and recipient is prohibited from distributing any and all work product to non-approved third parties under penalty of civil action.

DESCRIPTION:	Vault Layout 3660x48 AT&T COLA INSPECTED
PART NUMBER:	100010385
CREATED:	7/28/2020
LAYOUT DRAWING	
DRAWN BY:	S. Woods
MODIFIED:	11/10/2023
REV:	B-2
SHEET:	10
	2 OF 2

MP1:58E010001