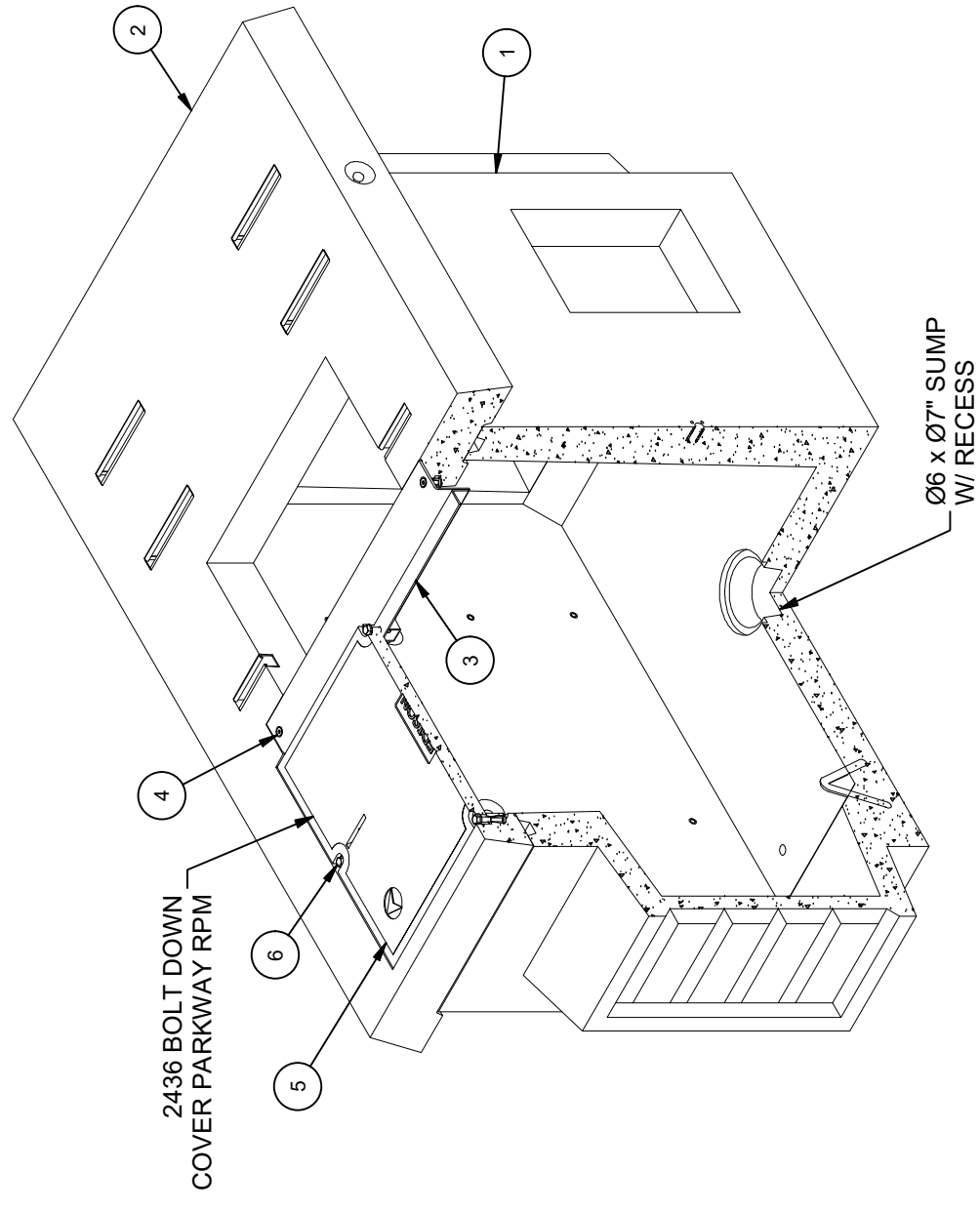


DESIGN NOTES

- DESIGNED IN ACCORDANCE WITH AASHTO HS20-44 TRAFFIC BRIDGE LOADING USING 5,500 PSI COMPRESSIVE STRENGTH CONCRETE AND 60,000 PSI YIELD STRENGTH ASTM A-706 STEEL REINFORCEMENT PER CALCS. #31395.
- PAD CONCRETE DESIGNED PER ASTM C-857 LOAD DESIGNATION A-0.3 (300 PSF) PARKWAY LOADING / 30,000 lb TRANSFORMER, USING 5,500 PSI CONCRETE AND ASTM A-706 GR. 60. STEEL REINFORCEMENT PER CALCS. #33270.
- COVER DESIGNED FOR 300 PSF, OR 600 lb LOAD ON 5.5" x 5.5" FOOTPRINT RESTRICTED TO AREAS OF PEDESTRIAN USE AND LIGHT MAINTENANCE VEHICLES USE, AND OTHER AREAS THAT ARE INACCESSIBLE TO ALL OTHER VEHICLE TRAFFIC.
- SWITCH ENCLOSURE TO BE PLACED ON A MIN. 6" BASE OF CRUSHER RUN FOR EASE OF INSTALLATION AND EVEN LOAD DISTRIBUTION.
- MINIMUM EXCAVATION SIZE 4'-9" x 8'-4" x DEPTH REQ'D.
- ALL PARTS TO BE STENCILED: MFG DATE / JOB NUMBER / PRODUCT ID / WEIGHT.
- FOR COMPLETE DESIGN AND PRODUCT INFORMATION CONTACT JENSEN PRECAST.

BILL OF MATERIALS

ITEM	UNIT QTY	QTY	PART NUMBER	DESCRIPTION	MASS (lb)
1	1	1	100007452	Vault 3660x42 Rect. Bottom Section Knockout Ducted, Sump Edison	4935
2	1	1	100012421	Pad 5484x6 26"x36"E Edison UGS SS536, SB-5	1527
3	1	1	100006370	BEAM STEEL 3660-67 PMH GALV EDISON	27
4	1	2	100008097	BOLT, 1/2"x1" FLT HD PLATED	
5	1	1	100007027	COVER 2436 POLYMER EDISON	163
6	1	4	100008105	PENTA BOLT 1/2-13 UNC 2-1/2 304SS W/CAPWASH	
7	1.000 ul	1.000 ul	100005749	SEALANT JOINT BUTYL RUBBER ASTM C-990 AND M198 CS-102 1IN EQUIV X14.5FT PER BOX 118FT	



ISOMETRIC VIEW

LIFTING NOTES

- FIELD INSTALLATION: PLANT DEMOLING: MINIMUM HANDLING CONCRETE STRENGTH F<sub>c</sub> = 5500 PSI RIGGING EQUALIZER REQUIRED TO EQUALIZE LOAD TO 4 LIFTING POINTS WITH A SLING ANGLE BETWEEN 60° AND 90°
- BURY DEPTH: -0.3' - 0.3' to Top
- WATER LEVEL: 3.0'
- APPROX. WEIGHT: 6652.93 Lbs
- DESIGN SPEC: ACI 318, ASTM C857
- LOADING SPEC: A-16 (AASHTO HS20-44)
- AGENCY: Edison
- AGENCY SPEC: UGS SS536, SB-5

REVISION HISTORY		DATE	APPROVED
REV	DESCRIPTION	DATE	APPROVED
B-1	INITIAL RELEASE INVENTOR	4/10/2024	

DESCRIPTION: Slab Box Layout 3660x42 Knockout Ducted, Sump 24"x36"E Edison UGS SS536, SB-5

REV: B-1

PART NUMBER: 100010388 LAYOUT REVIEW

DRAWN BY: J. Prado

CREATED: 4/9/2024 MODIFIED: 4/10/2024

SHEET: 1 OF 2

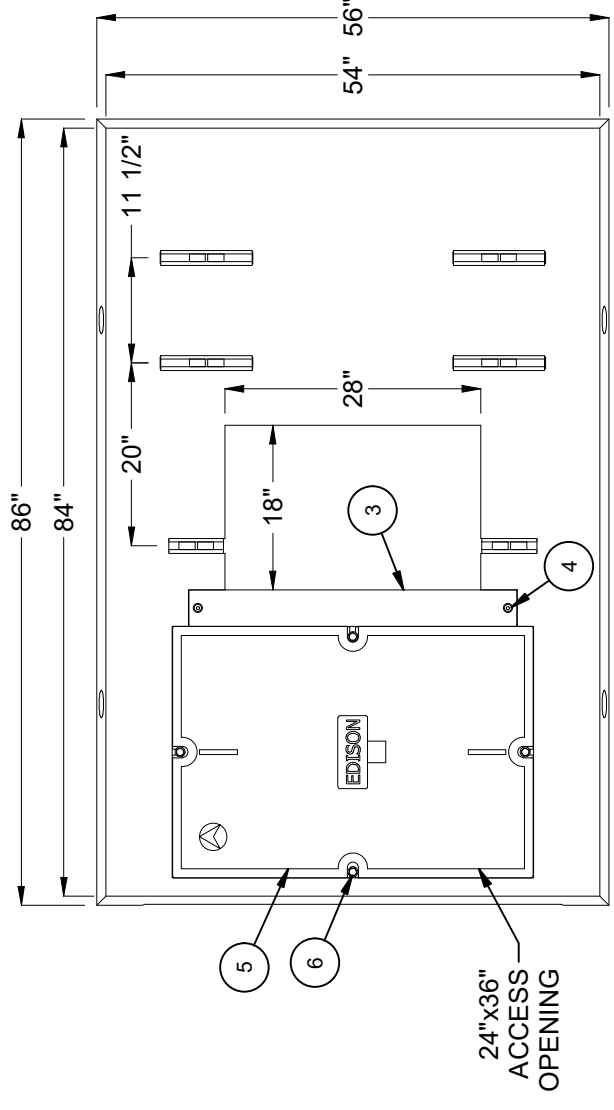
©2024 Jensen Precast. All rights reserved. All materials appearing as Jensen Precast documents and the like are proprietary work product and are protected under U.S. copyright and other laws. Unless in conjunction with business conducted with Jensen Precast, any use of Jensen Precast work product without express, written consent is prohibited, and recipient is prohibited from distributing any and all work product to non-approved third parties under penalty of civil action.

**JENSEN PRECAST** EST. 1968

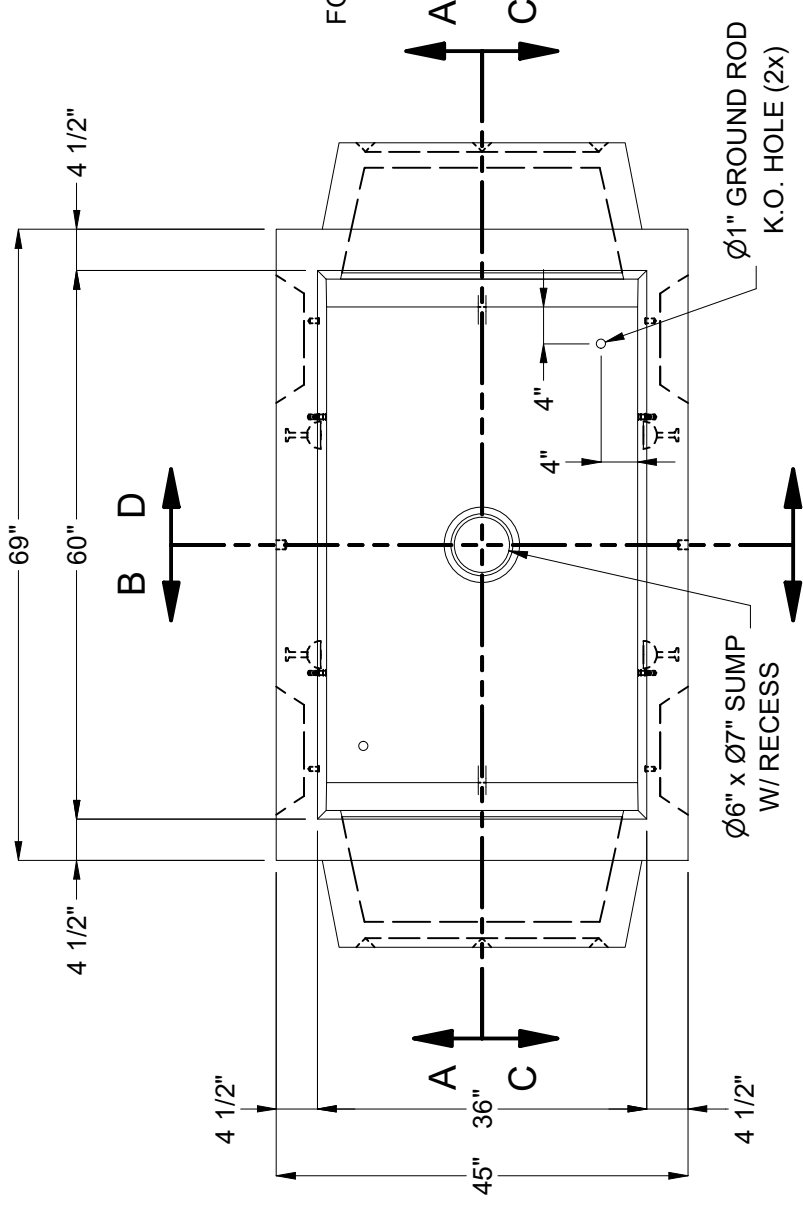
WWW.JENSENPRECAST.COM

MPI:88E010001

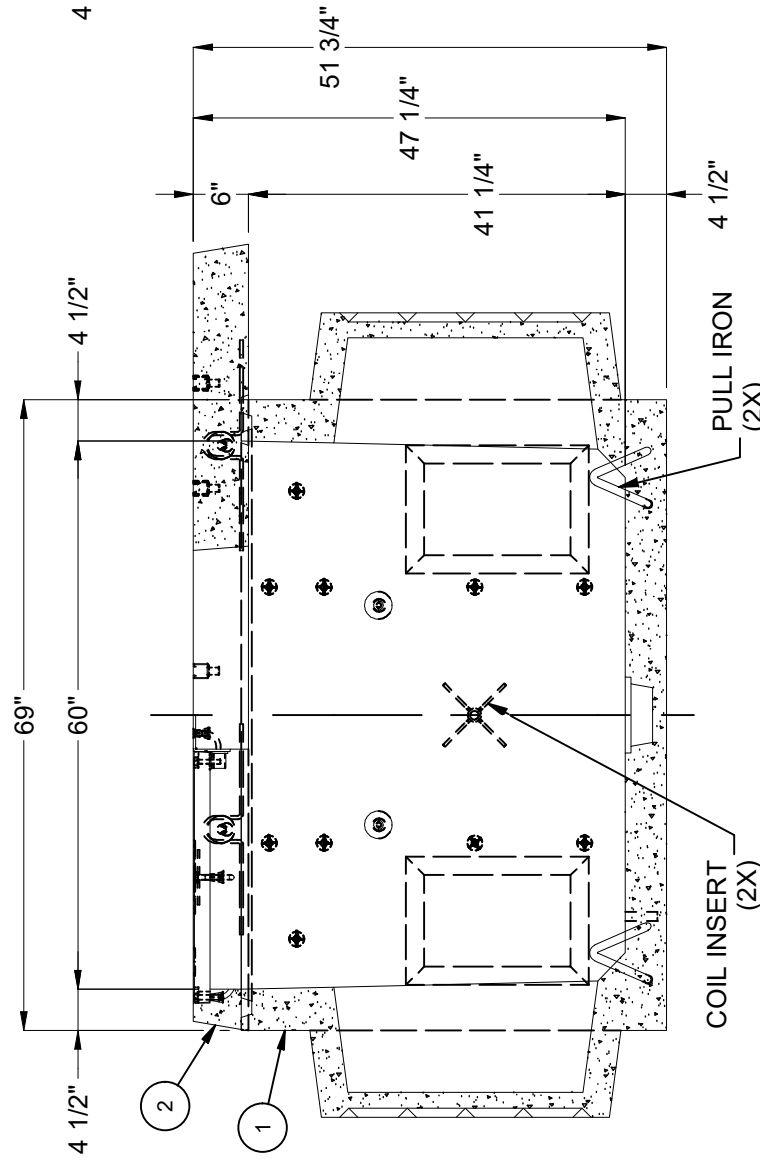
MPI:88E010001



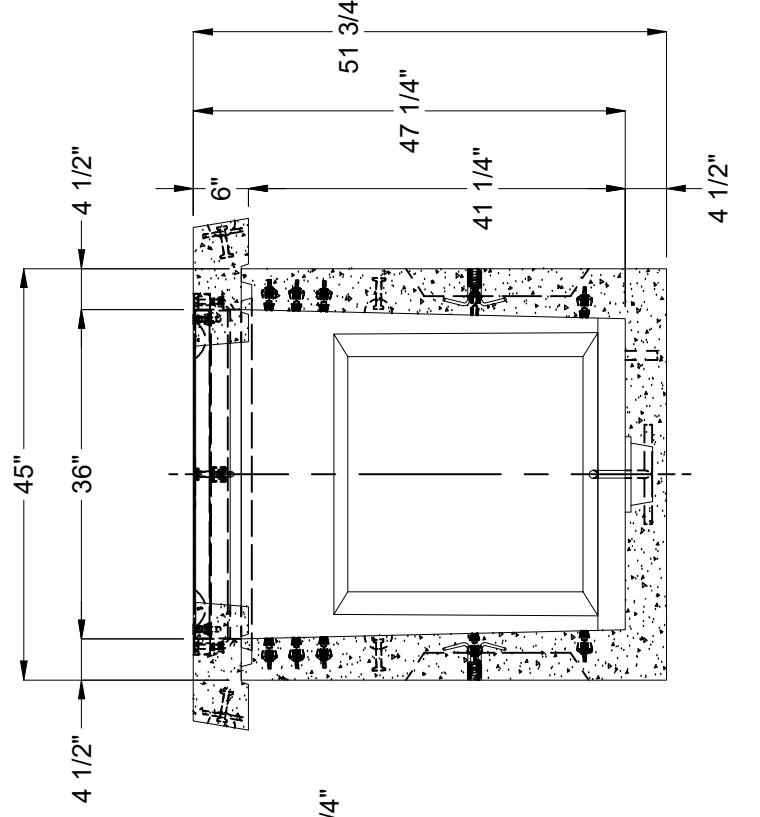
**PLAN VIEW EQUIPMENT PAD**



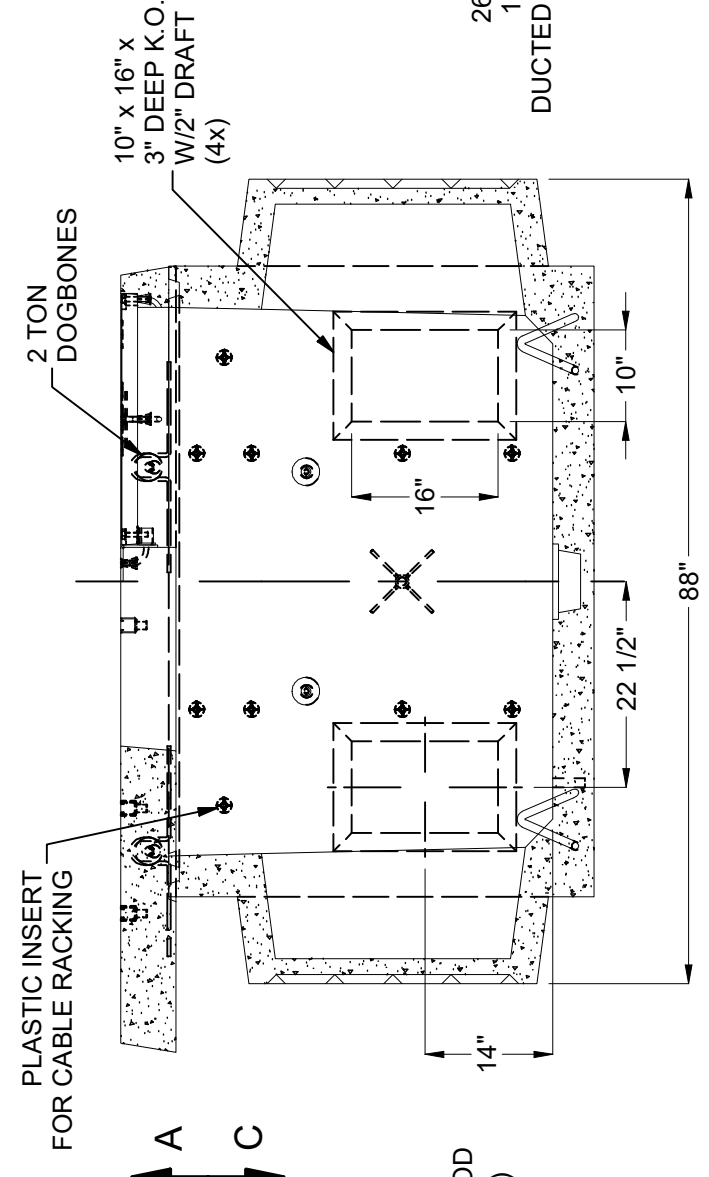
**PLAN VIEW (W/O EQUIPMENT PAD FOR CLARITY)**



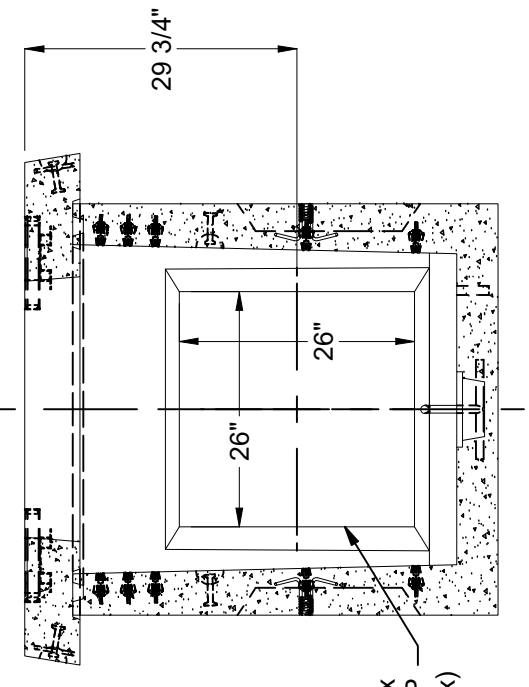
**SECTION A-A**



**SECTION B-B**



**SECTION C-C**



**SECTION D-D**

BURY DEPTH:	-0.3' - 0.3' to Top
WATER LEVEL:	3.0'
DESIGN SPEC:	ACI 318, ASTM C857
AGENCY:	Edison
APPROX. WEIGHT:	6652.93 Lbs
LOADING SPEC:	A-16 (AASHTO HS20-44)
AGENCY SPEC:	UGS SS536, SB-5

**JENSEN PRECAST** EST. 1968  
[WWW.JENSENPRECAST.COM](http://WWW.JENSENPRECAST.COM)

©2024 Jensen Precast. All rights reserved. All materials appearing as Jensen Precast documents and the like are proprietary work product and are protected under U.S. copyright and other laws. Unless in conjunction with business conducted with Jensen Precast, any use of Jensen Precast work product without express, written consent is prohibited, and recipient is prohibited from distributing any and all work product to non-approved third parties under penalty of civil action.

DESCRIPTION:	Slab Box Layout 3660x42 Knockout Ducted, Sump 24"x36"E Edison UGS SS536, SB-5
LAYOUT DRAWING	
PART NUMBER:	100010388
CREATED:	4/9/2024
DRAWN BY:	J. Prado
MODIFIED:	4/10/2024