

DESIGN NOTES

- ENCLOSURE DESIGNED IN ACCORDANCE WITH AASHTO H-20-44 TRAFFIC BRIDGE LOADING USING 6,000 PSI COMPRESSIVE STRENGTH CONCRETE AND 60,000 PSI YIELD STRENGTH ASTM A-706 STEEL REINFORCEMENT PER CALCS. #31427 & #34674 PAD.
- COVER AND TRANSFORMER PAD DESIGN FOR PARKWAY 300 PSF LOADING.
- MINIMUM EXCAVATION SIZE: 4'-8" X 7'-8" X DEPTH REQ'D.
- EXTERIOR SURFACES OF STRUCTURE(S) SHALL BE COATED WITH CoatMasters CM7007 IMRAE.
- STRUCTURES TO BE STENCILED, "JENSEN PRECAST", WITH "TIME" AND "DATE OF POUR", AND SDGE STOCK NUMBER ON EXTERIOR AND INTERIOR WALLS.
- CUSTOMER TO PROVIDE ADEQUATE FOUNDATION OR FOOTINGS TO MEET SOIL BEARING REQUIREMENTS.
- FOR COMPLETE DESIGN AND PRODUCT INFORMATION CONTACT JENSEN PRECAST.

| CROSS REFERENCE | |
|-----------------|---------------------------------------------|
| JENSEN PART No. | SHORT DESCRIPTION |
| 100012221 | 3314 12" Top section with frame |
| 100012220 | 3314 Intermediate 12" |
| 100008940 | 3427 Distribution Transformer Pad 92" x 98" |
| 100006665 | 3426 Cover, Parkway |

LIFTING NOTES

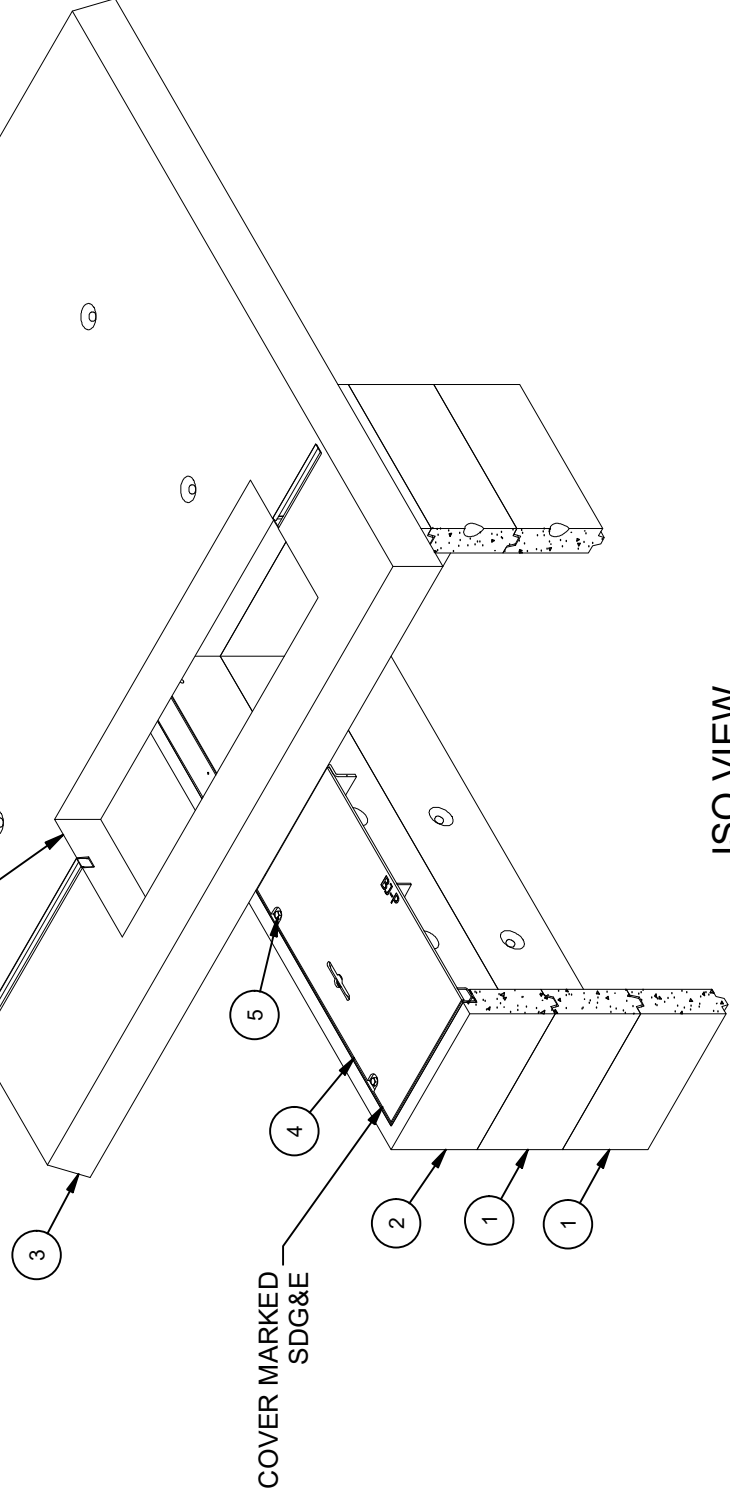
| | |
|--------------------------------------------------------------------------------------------------------------------------------------|--------------------------------------|
| THIS CONCRETE PRODUCT IS DESIGNED TO BE LIFTED WITH (4) EQUALLY LOADED RIGGINGS LEGS MIN. 60° SLING ANGLE, MEASURED FROM HORIZONTAL. | |
| BURY DEPTH: | Agency Specified to Agency Specified |
| WATER LEVEL: | 3.0' |
| DESIGN SPEC: | ACI 318, ASTM C857 |
| AGENCY: | SDGE |
| APPROX. WEIGHT: | 7164.35 Lbs |
| LOADING SPEC: | A-03 (300 psf) |
| AGENCY SPEC: | 3427 |

BILL OF MATERIALS

| ITEM | UNIT QTY | QTY | PART NUMBER | DESCRIPTION | MASS (lb) |
|------|-----------|-----------|-------------|---------------------------------------------------------------------------------------|-----------|
| 1 | 1 | 2 | 100012220 | Riser 3672x12 SDGE 3314 | 952 |
| 2 | 1 | 1 | 100012221 | Top Riser 3672x12 Cast-in Frame SDGE 3314 | 962 |
| 3 | 1 | 1 | 100008940 | Pad 9790x6 SDGE 3427 | 4125 |
| 4 | 1 | 1 | 100006665 | DAS1-B-3672-DX-TRX-G-FONT-BW-SDG&E BJ-P-(SC3672-PSRGV-1010) | 173 |
| 5 | 1 | 4 | 100004454 | BOLT PENTA 1/2-13 UNC 0.875 HEAD 2.5L SS | |
| 6 | 2,000 gal | 2,000 gal | 100038043 | COATING WATERPROOFING CoatMasters CM7007 IMRAE | |
| 7 | 1,000 ul | 1,000 ul | 100005749 | SEALANT JOINT BUTYL RUBBER ASTM C-990 AND M198 CS-102 1IN EQUIV X14.5FT PER BOX 118FT | |

18" x 54" CABLE OPENING
DRAFT: 1/2" ALL SIDES TYP.

2 TON DOGBONES



EST. 1968

WWW.JENSENPRECAST.COM

©2024 Jensen Precast-All rights reserved. All materials appearing as Jensen Precast documents and the like are proprietary work product and are protected under U.S. copyright and other laws. Unless in conjunction with business conducted with Jensen Precast, any use of Jensen Precast work product without express, written consent is prohibited, and recipient is prohibited from distributing any and all work product to non-approved third parties under penalty of civil action.

| | |
|--------------|------------------------------------------------------------------------------------|
| DESCRIPTION: | Slab Box Layout 3672x36 36"x36"E SDGE 3427 Ext. Coating - IMRAE CoatMasters CM7007 |
| PART NUMBER: | 100010393 |
| CREATED: | 8/11/2023 |
| DRAWN BY: | J. Prado |
| MODIFIED: | 3/18/2024 |

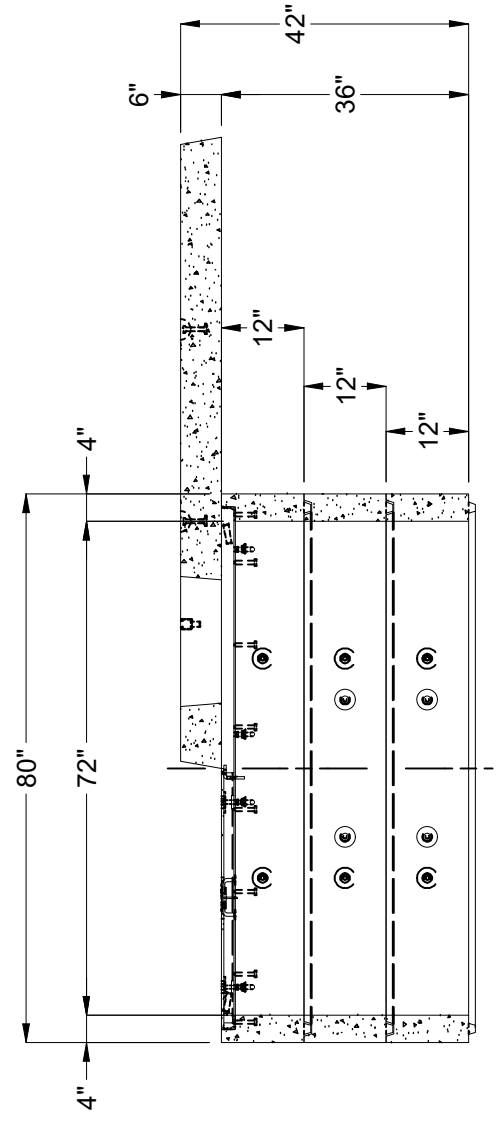
REVISION HISTORY

| REV | DESCRIPTION | DATE | APPROVED |
|-----|--------------------------|-----------|----------|
| B-1 | INITIAL RELEASE INVENTOR | 3/18/2024 | |

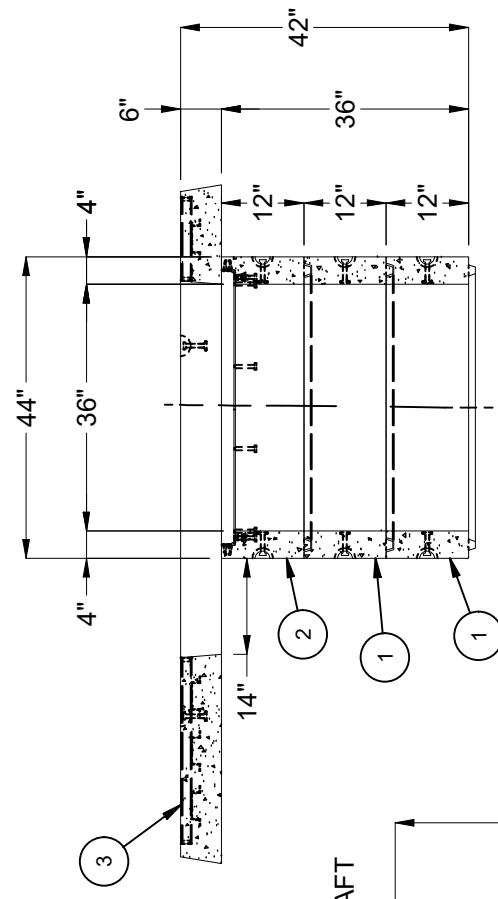
REV: B-1
SHEET: 4
1 OF 2

MP1E6E010001

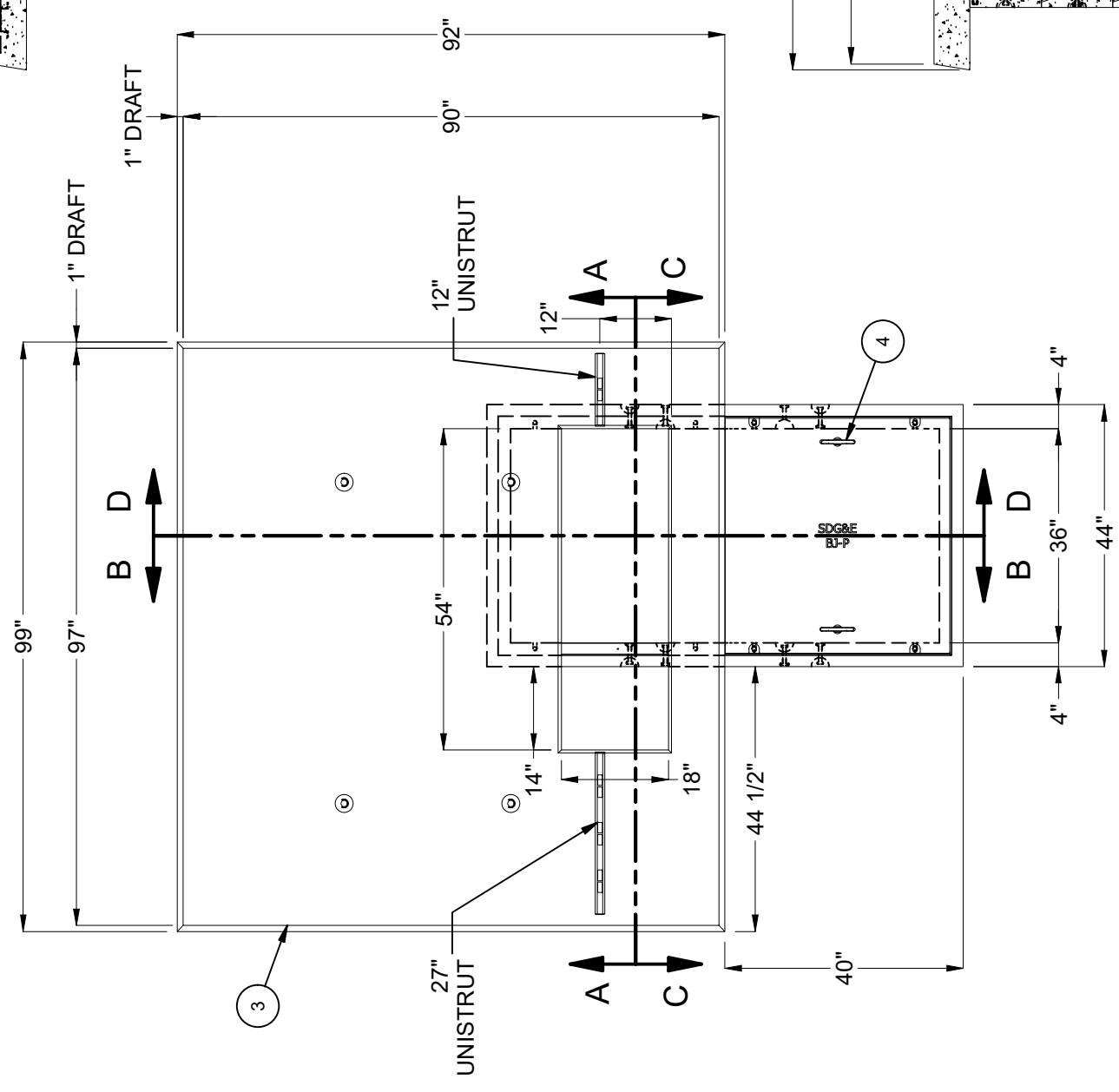
100010393.rvt



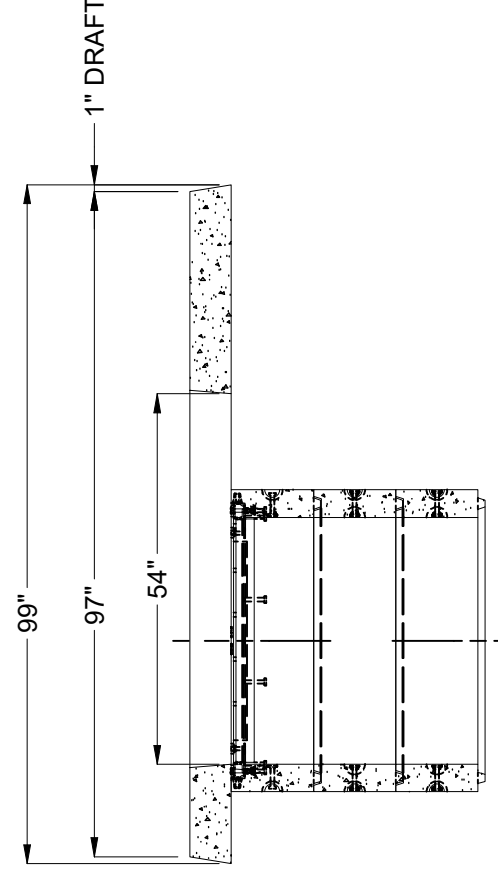
SECTION B-B



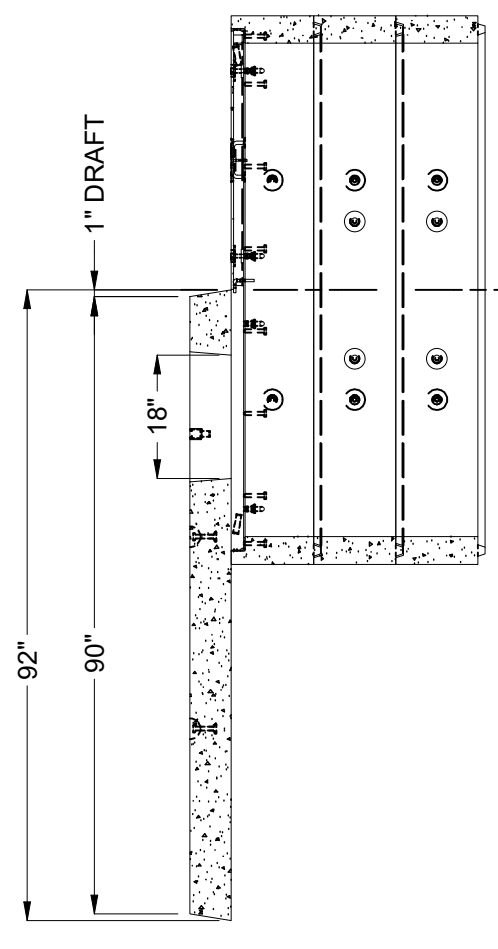
SECTION A-A



PLAN VIEW



SECTION C-C



SECTION D-D

| | |
|-----------------|--------------------------------------|
| BURY DEPTH: | Agency Specified to Agency Specified |
| WATER LEVEL: | 3.0' |
| DESIGN SPEC: | ACI 318, ASTM C857 |
| AGENCY: | SDGE |
| APPROX. WEIGHT: | 7164.35 Lbs |
| LOADING SPEC: | A-03 (300 psf) |
| AGENCY SPEC: | 3427 |

JENSEN PRECAST EST. 1968
WWW.JENSENPRECAST.COM

©2024 Jensen Precast. All rights reserved. All materials appearing as Jensen Precast documents and the like are proprietary work product and are protected under U.S. copyright and other laws. Unless in conjunction with business conducted with Jensen Precast, any use of Jensen Precast work product without express, written consent is prohibited, and recipient is prohibited from distributing any and all work product to non-approved third parties under penalty of civil action.

| | |
|----------------|------------------------------------------------------------------------------------|
| DESCRIPTION: | Slab Box Layout 3672x36 36"x36"E SDGE 3427 Ext. Coating - IMRAE CoatMasters CM7007 |
| PART NUMBER: | 100010393 |
| CREATED: | 8/11/2023 |
| LAYOUT DRAWING | |
| DRAWN BY: | J. Prado |
| MODIFIED: | 3/18/2024 |