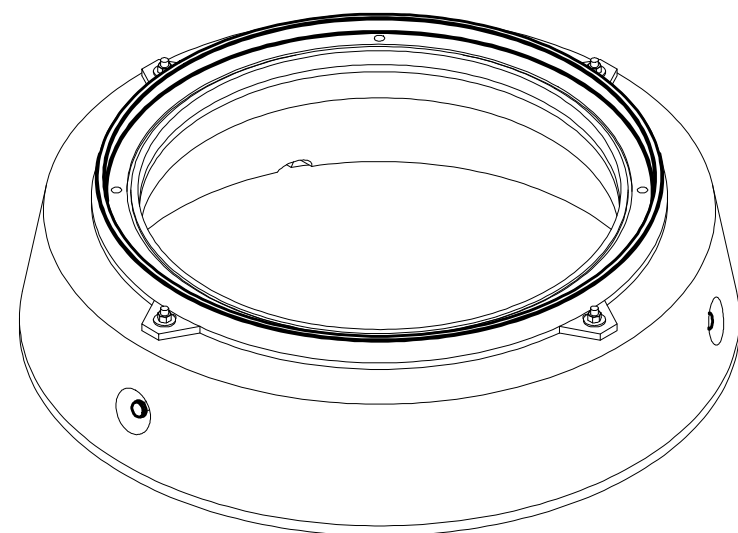


DESIGN NOTES

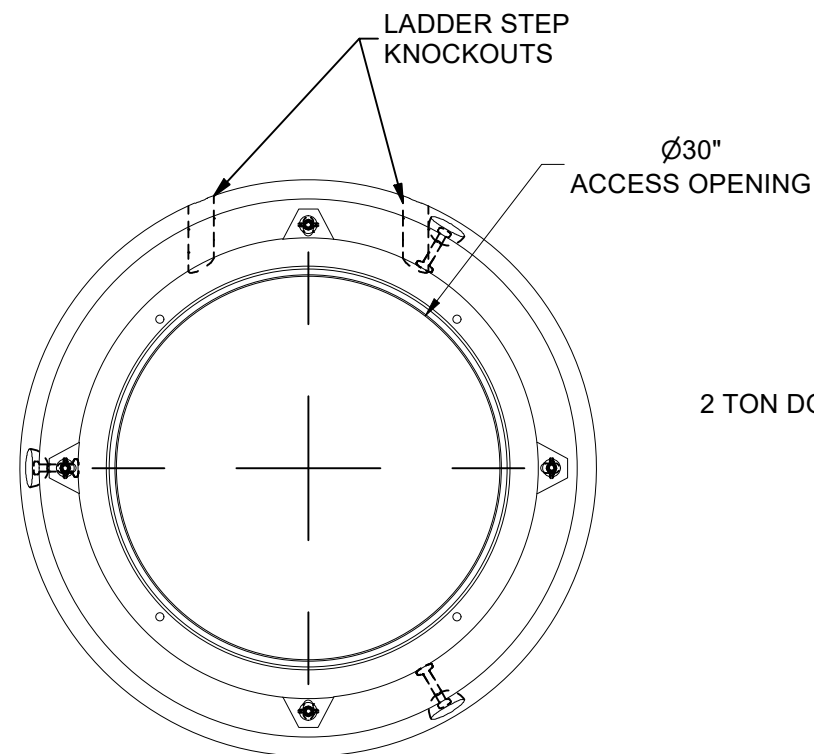
■ ALL PARTS TO BE STENCILED: MFG DATE / JOB NUMBER / PRODUCT ID / WEIGHT.

BILL OF MATERIALS

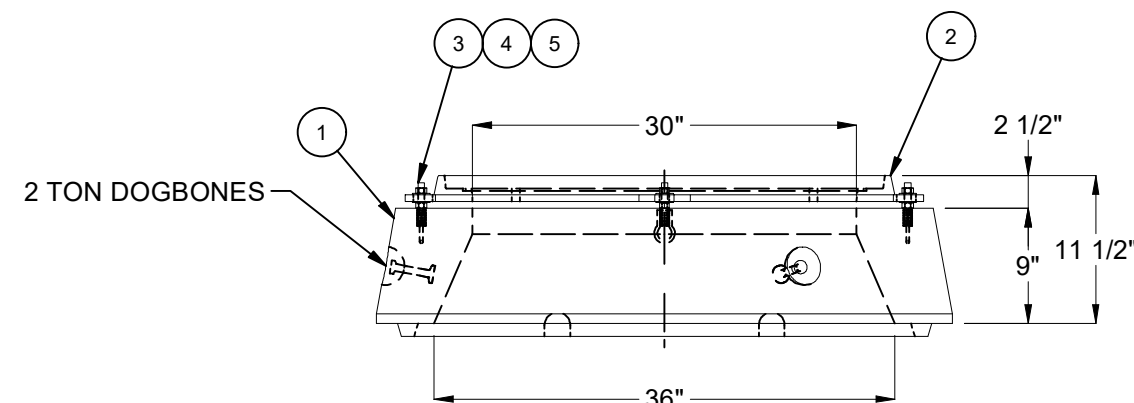
ITEM	UNIT QTY	QTY	PART NUMBER	DESCRIPTION
1	1	1	100012114	Grade Ring D3036x9
2	1	1	100006934	CI RING 30DIA NF R-1581 ASTM A-48 CL35B 2-FLANGE DOWN
3	1	4	100008115	STUD BOLT 1/2X5 UNC LEVELING PLAIN
4	1	8	100007007	HEX NUT 1/2-13 UNC HEAVY GALV
5	1	8	100002657	WASHER FLAT 1/2 REGULAR TYPE A RAW



ISO VIEW



PLAN VIEW



SIDE ELEVATION

LIFTING NOTES

■ FIELD INSTALLATION: PLANT DEMOLDING: MINIMUM HANDLING CONCRETE STRENGTH F'c = 5500 PSI RIGGING EQUALIZER REQUIRED TO EQUALIZE LOAD TO 3 LIFTING POINTS WITH A SLING ANGLE BETWEEN 60° AND 90°

BURY DEPTH:	0.0' - 0.0' to Top		
WATER LEVEL:	3.0'	APPROX. WEIGHT:	638.03 Lbs
DESIGN SPEC:	ASTM C857	LOADING SPEC:	A-16 (AASHTO HS20-44)
AGENCY:		AGENCY SPEC:	

**JENSEN PRECAST** EST. 1968  
[WWW.JENSENPRECAST.COM](http://WWW.JENSENPRECAST.COM)

©2024 Jensen Precast- All rights reserved. All materials appearing as Jensen Precast documents and the like are proprietary work product and are protected under U.S. copyright and other laws. Unless in conjunction with business conducted with Jensen Precast, any use of Jensen Precast work product without express, written consent is prohibited, and recipient is prohibited from distributing any and all work product to non-approved third parties under penalty of civil action.

REVISION HISTORY			
REV	DESCRIPTION	DATE	APPROVED
B	INITIAL RELEASE INVENTOR	3/18/2024	

DESCRIPTION:	36" DIA MN 9" CONE W/ RING 30" R-1581		REV:
PART NUMBER:	100010396	DRAWN BY:	J. Prado
CREATED:	9/21/2023	MODIFIED:	3/18/2024

LAYOUT REVIEW

SHEET: 1 OF 1

100010396.dwg