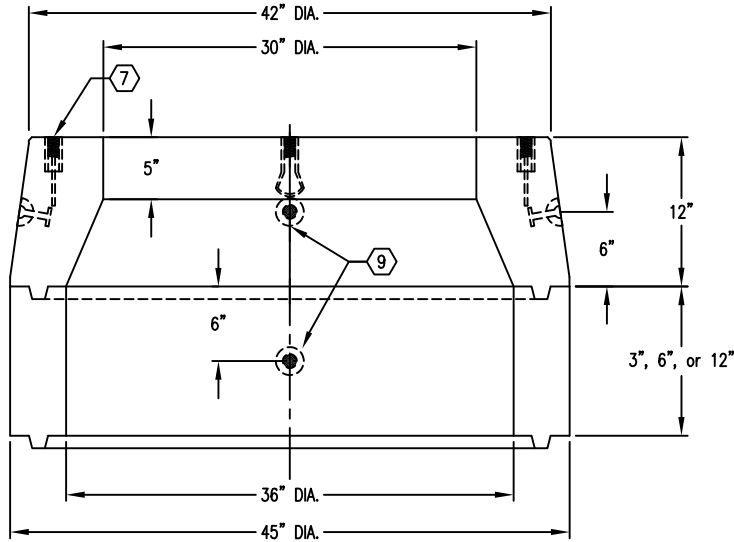


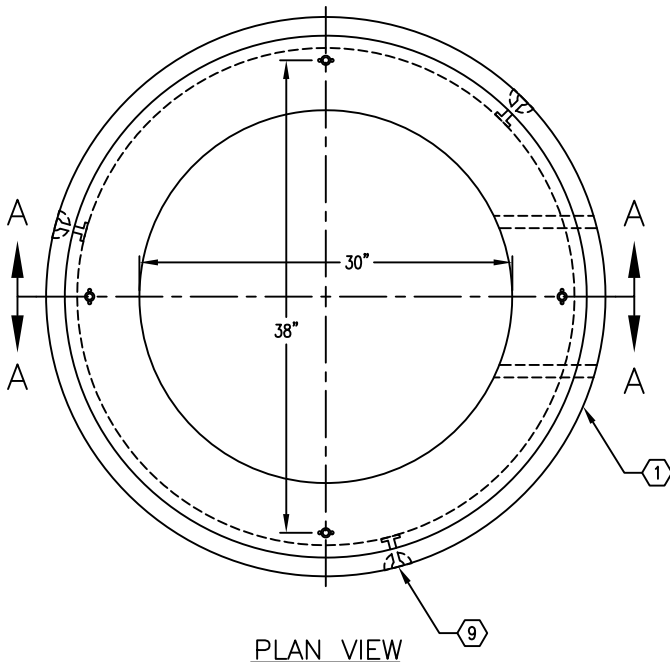
# 30" DIA. MANHOLE TRAFFIC COVER & NECK x 14" DEEP

## MATERIAL LIST - K36-MN14-11T

ITEM	PART NO.	DESCRIPTION	CAGE NO./ LOCATE	WEIGHT/ MOUNT
1	MN36-N12	12" CONE/NECK SECTION		430 lbs
2	MN36-R3	3" RISER RING		146 lbs
3	MN36-R6	6" RISER RING		301 lbs
4	MN36-R12	12" RISER RING		602 lbs
5	05-30-01	R-1581 CAST IRON RING		95 lbs
6	04-30-09	R-1581 CAST IRON COVER MARKED "EDISON"		290 lbs
7	55-10-422	1/2" LOOP INSERT	NECK SECTION	(4) SURFACE
8	1/2" x 5" ADJUSTING BOLT w/(2) NUTS AND WASHERS EACH			(4) REQ'D
9	55-20-203	2 TON x 3-3/8" RISS HANDLING ANCHOR	NECK SECTION EXTEN. SECTION	(3) SHELL (2) SHELL
10	20-10-510	5/8" x 1-1/2" STAINLESS STEEL HEX HEAD BOLT		(4) REQ'D



SECTION A-A



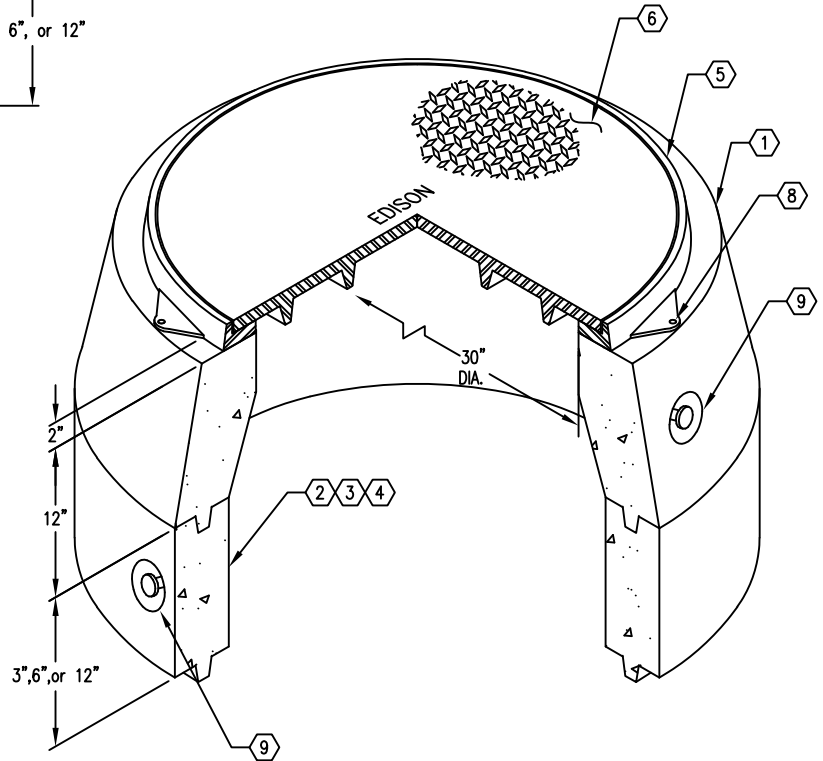
PLAN VIEW

### NOTES:

- CONCRETE DESIGNED IN ACCORDANCE WITH AASHTO HS 20-44 TRAFFIC BRIDGE LOADING USING 5,500 PSI COMPRESSIVE STRENGTH CONCRETE AND 60,000 PSI YIELD STRENGTH ASTM A-706 STEEL REINFORCING PER CALCS. #31637.

### ORDERING INFORMATION:

K36-MN14-11T FOR ASSEMBLY AS SHOWN  
PER EDISON SPEC. UGS MH318  
TOTAL WEIGHT OF ASSEMBLY IS 1,135 lbs.



#	DATE	DESCRIPTION	BY
A	01-05-00	NEW PART No.s	DRG