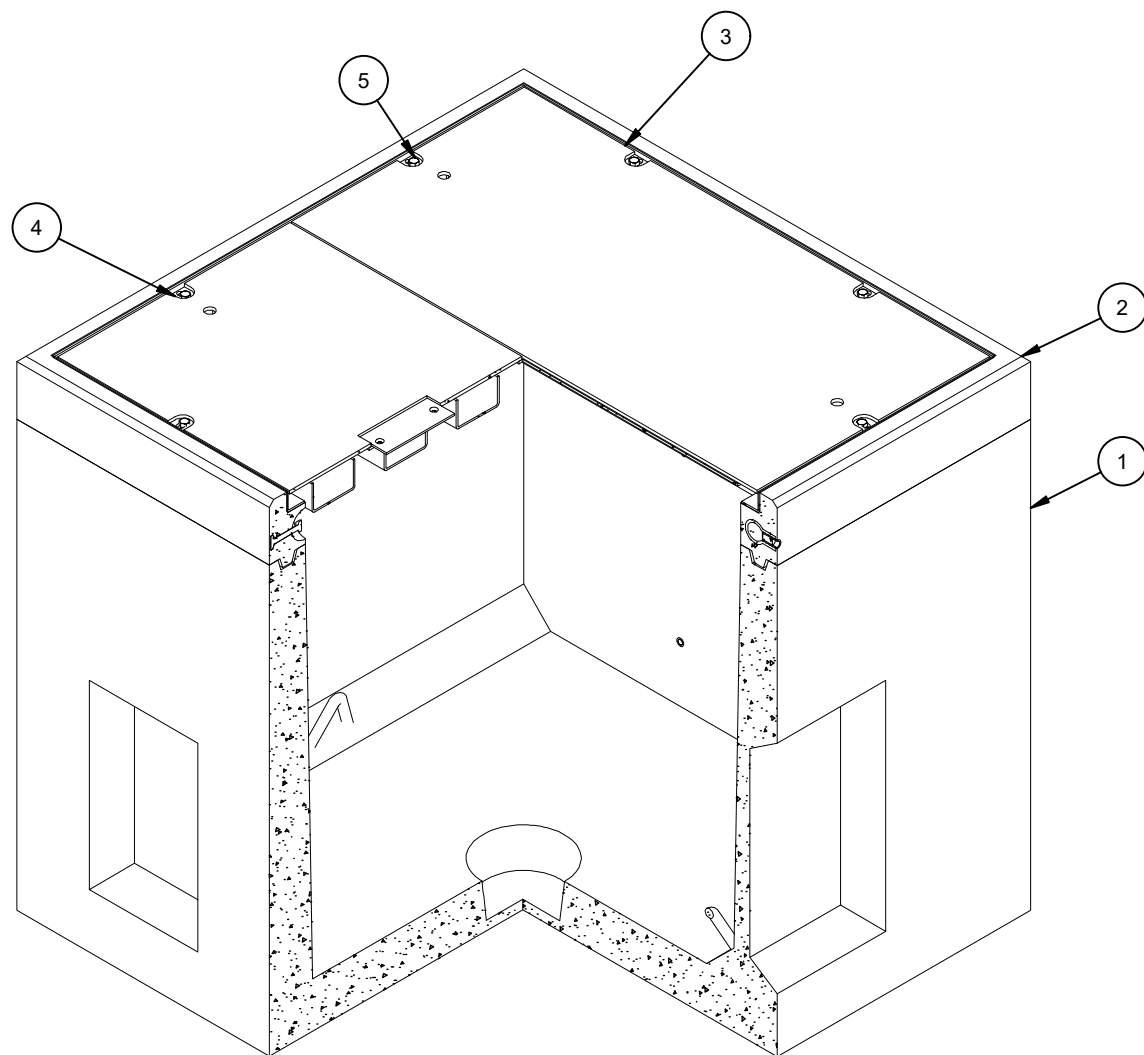


NOTES

- DESIGNED IN ACCORDANCE WITH AASHTO HS 20-44 TRAFFIC BRIDGE LOADING USING 5,500 PSI COMPRESSIVE STRENGTH CONCRETE AND 60,000 PSI YIELD STRENGTH ASTM A-706 STEEL REINFORCEMENT PER CALCS. #31853
- COVER DESIGN FOR TRAFFIC LOADING.
- VAULT TO BE PLACED ON A MIN. 6" BASE OF CRUSHER RUN FOR EASE OF INSTALLATION AND EVEN LOAD DISTRIBUTION.
- ALL PARTS TO BE STENCILED: MFG DATE / JOB NUMBER / PRODUCT ID / WEIGHT.
- MINIMUM EXCAVATION SIZE: 5'-8" X 5'-8" X DEPTH REQ'D.
- FOR COMPLETE DESIGN AND PRODUCT INFORMATION CONTACT JENSEN PRECAST.

BILL OF MATERIALS

ITEM	UNIT QTY	QTY	PART NUMBER	DESCRIPTION	MASS (lb)
1	1	1	100012232	Vault 4848x42 Rect. Bottom Section Knockout, Terminators Sump	4218
2	1	1	100012229	Riser 4848x6 Rect. Riser Cast-In Frame	424
3	1	1	100006531	DAS1-B-4848-D5-DP-G-FONT-(SC44-TGV)	223
4	1	1	100006552	DAS1-T-4848-D5-DP-G-(SC44-TGV)	216
5	1	8	100004349	BOLT HEX 1/2-13 UNC 2.5 304SS	
6	1	1	100007650	NAME PLATE HARDWARE KIT	
7	1	1	100006739	FONTANA NAME PLATE SS BLANK	
8	1.000 ul	1.000 ul	100005749	SEALANT JOINT BUTYL RUBBER ASTM C-990 AND M198 CS-102 1IN EQUIV X14.5FT PER BOX 118FT	



ISO VIEW

LIFTING NOTES

- FIELD INSTALLATION: PLANT DEMOLDING: MINIMUM HANDLING CONCRETE STRENGTH F'c = 5500 PSI RIGGING EQUALIZER REQUIRED TO EQUALIZE LOAD TO 4 LIFTING POINTS WITH A SLING ANGLE BETWEEN 60° AND 90°

BURY DEPTH:	0.0' - 0.0' to Top
WATER LEVEL:	3.0'
DESIGN SPEC:	ACI 318, ASTM C857
AGENCY:	
APPROX. WEIGHT:	5083.03 Lbs
LOADING SPEC:	A-16 (AASHTO HS20-44)
AGENCY SPEC:	



WWW.JENSENPRECAST.COM

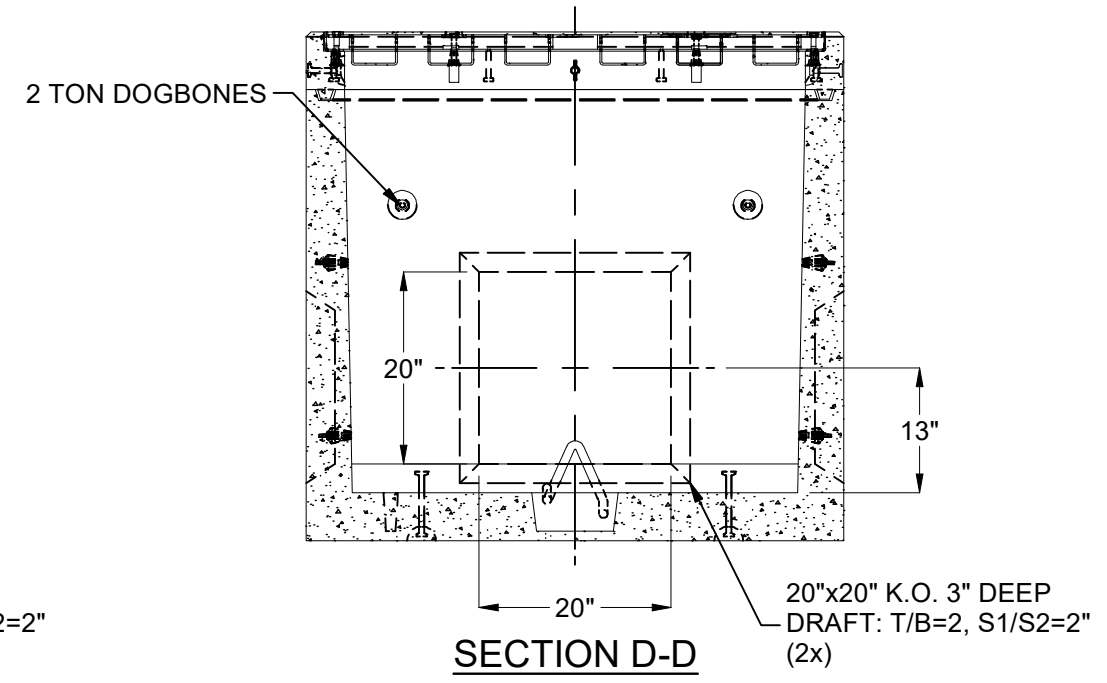
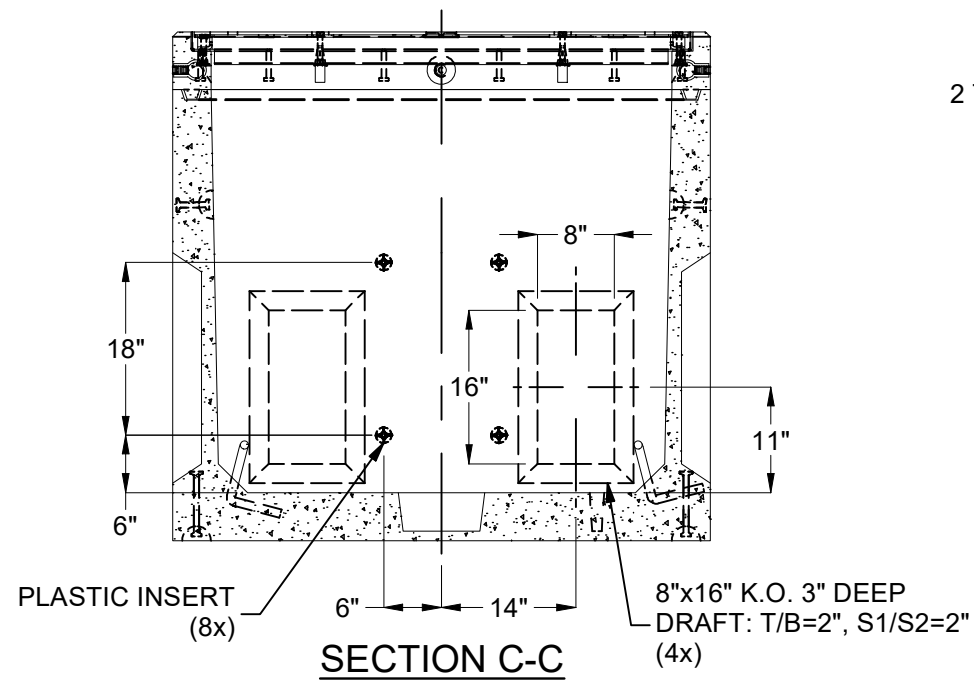
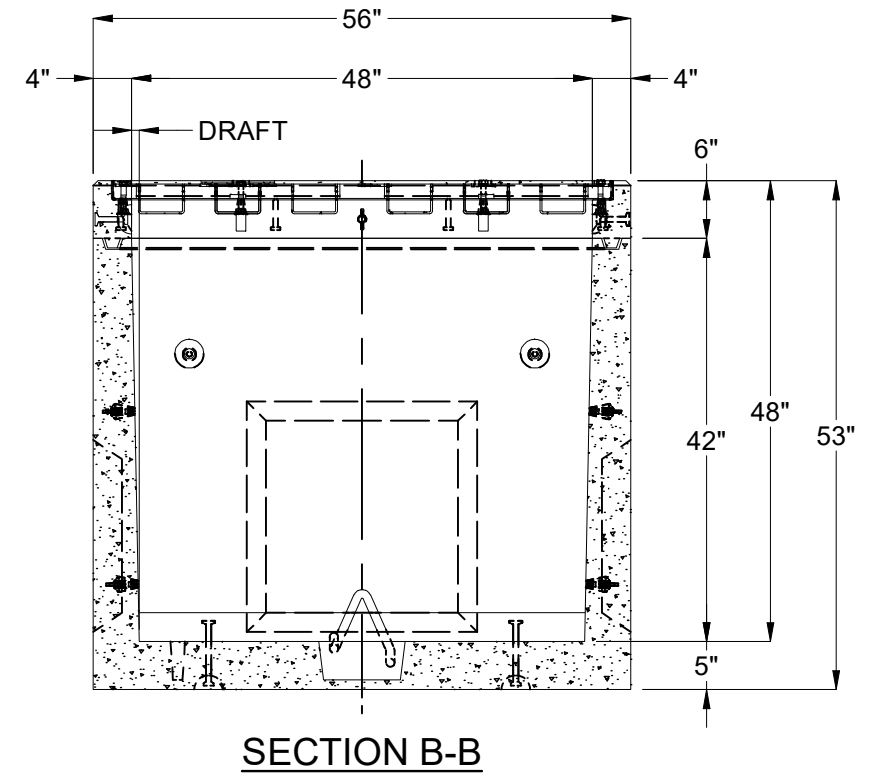
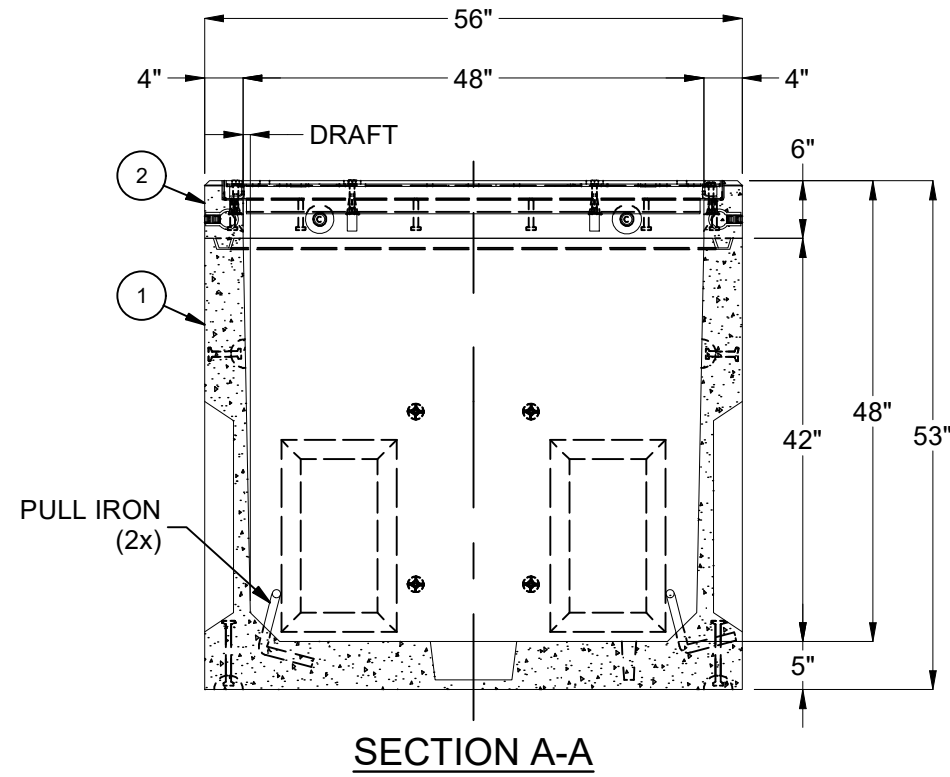
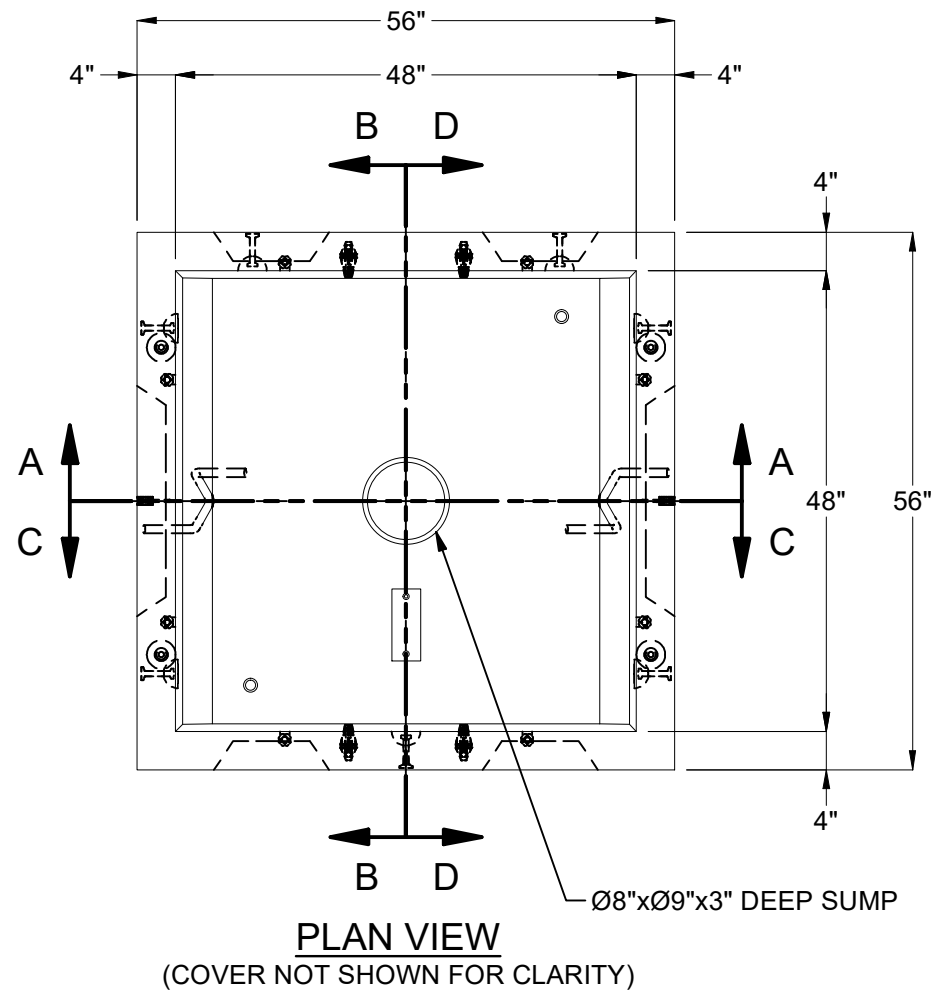
©2024 Jensen Precast- All rights reserved. All materials appearing as Jensen Precast documents and the like are proprietary work product and are protected under U.S. copyright and other laws. Unless in conjunction with business conducted with Jensen Precast, any use of Jensen Precast work product without express, written consent is prohibited, and recipient is prohibited from distributing any and all work product to non-approved third parties under penalty of civil action.

REVISION HISTORY

REV	DESCRIPTION	DATE	APPROVED
A-2	INITIAL RELEASE	3/28/2024	

DESCRIPTION:	Vault Layout 4848x48 Knockout Sump 48"x48"C		REV:	A-2
LAYOUT REVIEW				
PART NUMBER:	100010419	DRAWN BY:	J.Rivas	
CREATED:	3/20/2024	MODIFIED:	3/28/2024	
				SHEET:
				1 OF 2

100010419.dwg



100010419.dwg

BURY DEPTH:	0.0' - 0.0' to Top
WATER LEVEL:	3.0'
DESIGN SPEC:	ACI 318, ASTM C857
AGENCY:	
APPROX. WEIGHT:	5083.03 Lbs
LOADING SPEC:	A-16 (AASHTO HS20-44)
AGENCY SPEC:	

JENSEN PRECAST EST. 1968

WWW.JENSENPRECAST.COM

©2024 Jensen Precast- All rights reserved. All materials appearing as Jensen Precast documents and the like are proprietary work product and are protected under U.S. copyright and other laws. Unless in conjunction with business conducted with Jensen Precast, any use of Jensen Precast work product without express, written consent is prohibited, and recipient is prohibited from distributing any and all work product to non-approved third parties under penalty of civil action.

DESCRIPTION:	Vault Layout 4848x48 Knockout Sump 48"x48"C	
	LAYOUT DRAWING	
PART NUMBER:	100010419	DRAWN BY: J.Rivas
CREATED:	3/20/2024	MODIFIED: 3/28/2024

REV: A-2

SHEET: 2 OF 2