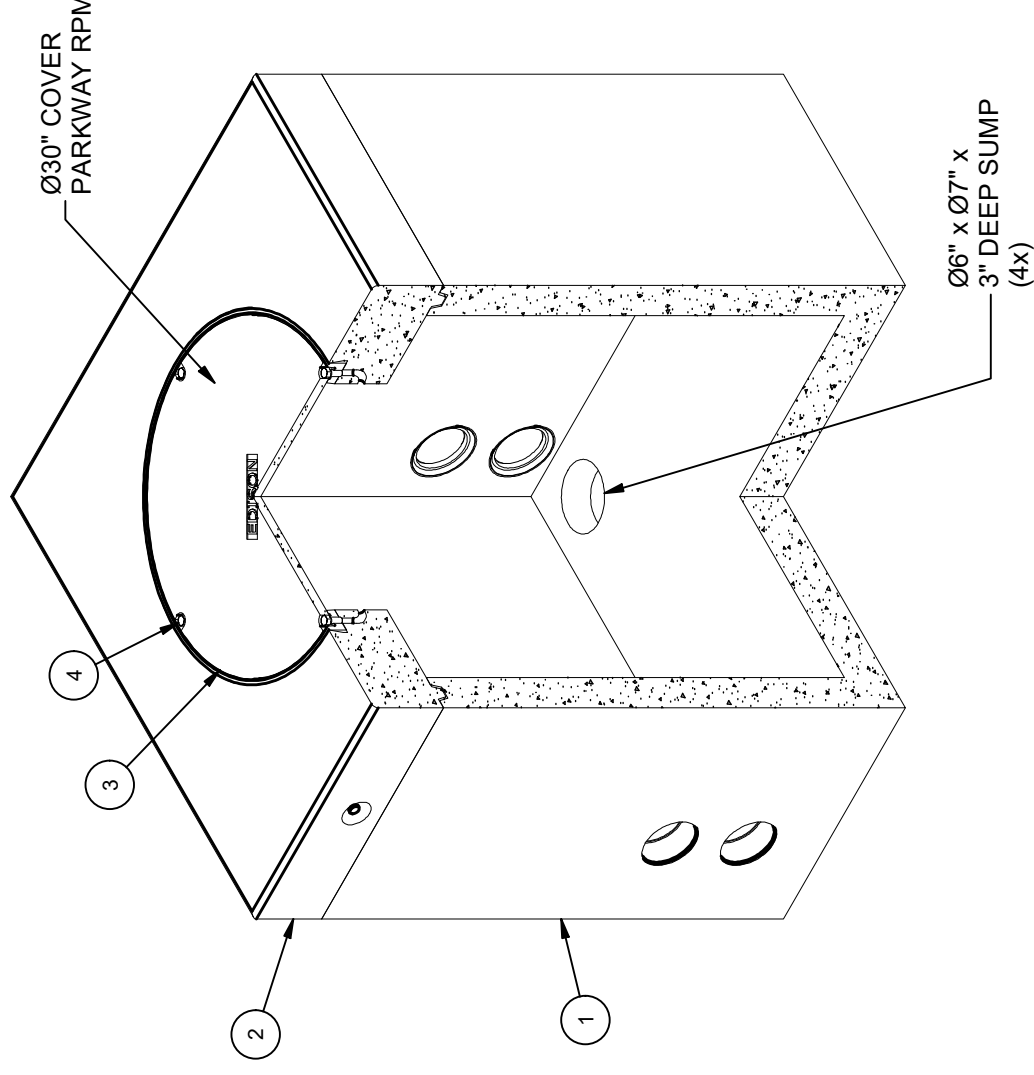


DESIGN NOTES

- DESIGNED IN ACCORDANCE WITH AASHTO HS20-44 TRAFFIC BRIDGE LOADING USING 5,500 PSI COMPRESSIVE STRENGTH CONCRETE AND 60,000 PSI YIELD STRENGTH ASTM A-706 STEEL REINFORCEMENT PER CALCS. #30479.
- COVER DESIGNED FOR 300 PSF, OR 600 lb LOAD ON 5.5' x 5.5' FOOTPRINT RESTRICTED TO AREAS OF PEDESTRIAN USE AND LIGHT MAINTENANCE VEHICLES USE, AND OTHER AREAS THAT ARE INACCESSIBLE TO ALL OTHER VEHICLE TRAFFIC.
- MINIMUM EXCAVATION SIZE: 5'-8" X 5'-8" X DEPTH REQ'D.
- VAULT TO BE PLACED ON A MIN. 6" BASE OF CRUSHER RUN FOR EASE OF INSTALLATION AND EVEN LOAD DISTRIBUTION.
- ALL PARTS TO BE STENCILED: MFG DATE / JOB NUMBER / PRODUCT ID / WEIGHT.
- FOR COMPLETE DESIGN AND PRODUCT INFORMATION CONTACT JENSEN PRECAST.

BILL OF MATERIALS

ITEM	UNIT QTY	QTY	PART NUMBER	DESCRIPTION	MASS (lb)
1	1	1	100012254	Vault 4848x48 Rect. Bottom Section Terminators Sump Edison UGS SS564	4693
2	1	1	100009197	Vault 4848x8 Slab Top 30"C Cast-In Frame Edison UGS SS564	1760
3	1	1	100007021	COVER 30DIA RPM 1106 EDISON	69
4	1	4	100008106	PENTA BOLT 5/8X1-1/2 W/CAPWASH	
5	1	4	100008115	STUD BOLT 1/2X5 UNC LEVELING PLAIN	
6	1	8	100002657	WASHER FLAT 1/2 REGULAR TYPE A RAW	
7	1	8	100007007	HEX NUT 1/2-13 UNC HEAVY GALV	
8	1.000 ul	1.000 ul	100005749	SEALANT JOINT BUTYL RUBBER ASTM C-990 AND M198 CS-102 1IN EQUIV X14.5FT PER BOX 118FT	



ISOMETRIC VIEW

LIFTING NOTES

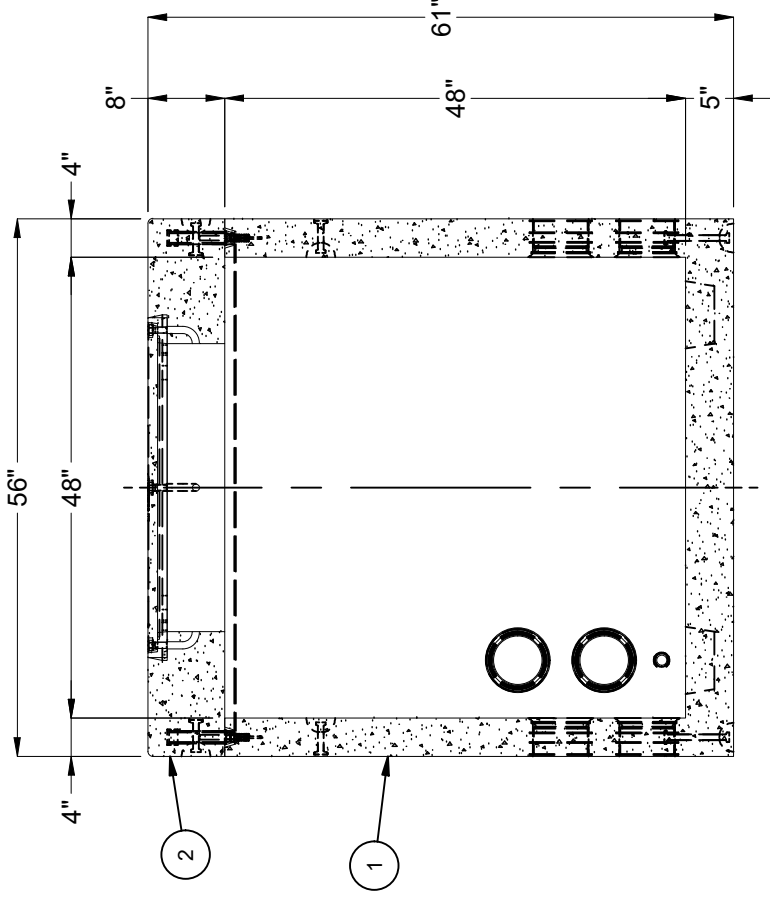
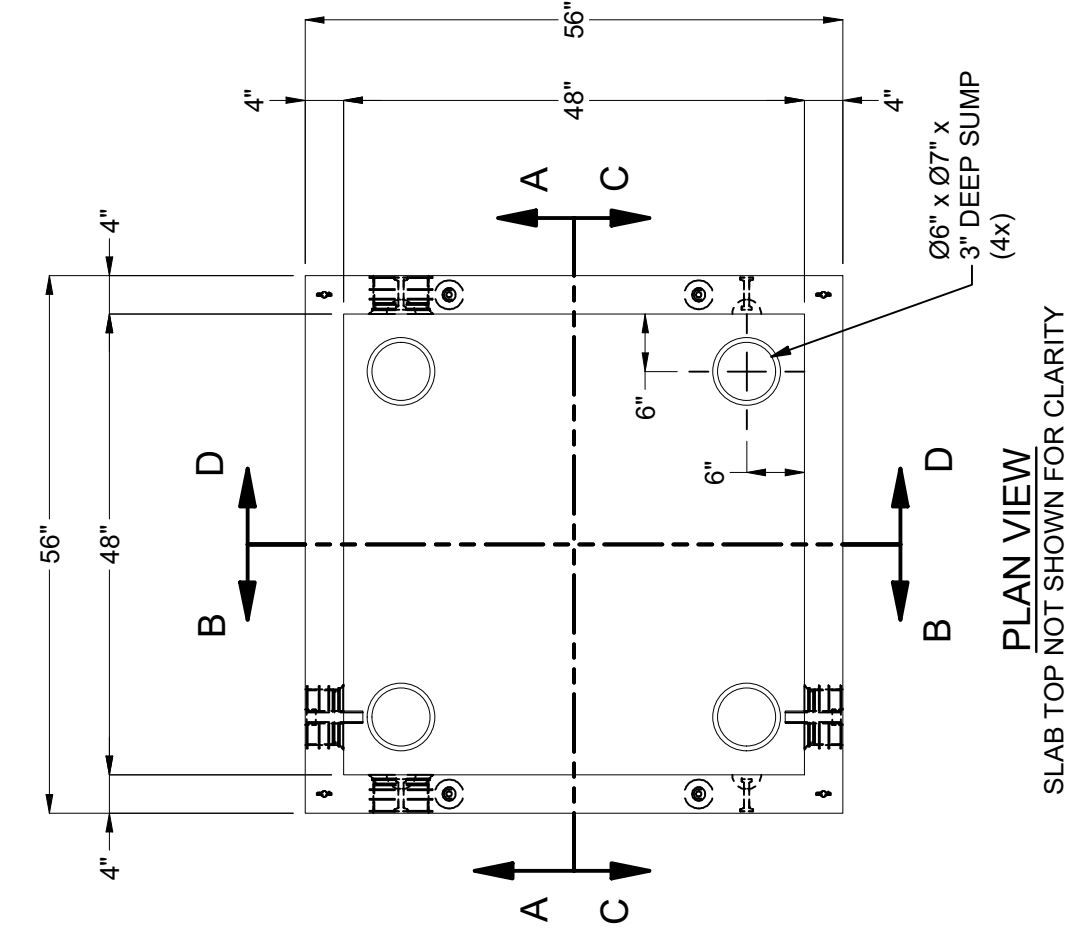
- FIELD INSTALLATION: PLANT DEMOLDING: MINIMUM HANDLING CONCRETE STRENGTH F<sub>c</sub> = 5500 PSI RIGGING EQUALIZER REQUIRED TO EQUALIZE LOAD TO 4 LIFTING POINTS WITH A SLING ANGLE BETWEEN 60° AND 90°
- BURY DEPTH: 0.0' - 0.0' to Top
- WATER LEVEL: 3.0'
- APPROX. WEIGHT: 6523.24 Lbs
- LOADING SPEC: ACI 318, ASTM C857
- AGENCY SPEC: Edison
- LOADING SPEC: A-16 (AASHTO HS20-44)
- AGENCY SPEC: UGS SS564

**JENSEN PRECAST** EST. 1968  
[WWW.JENSENPRECAST.COM](http://WWW.JENSENPRECAST.COM)

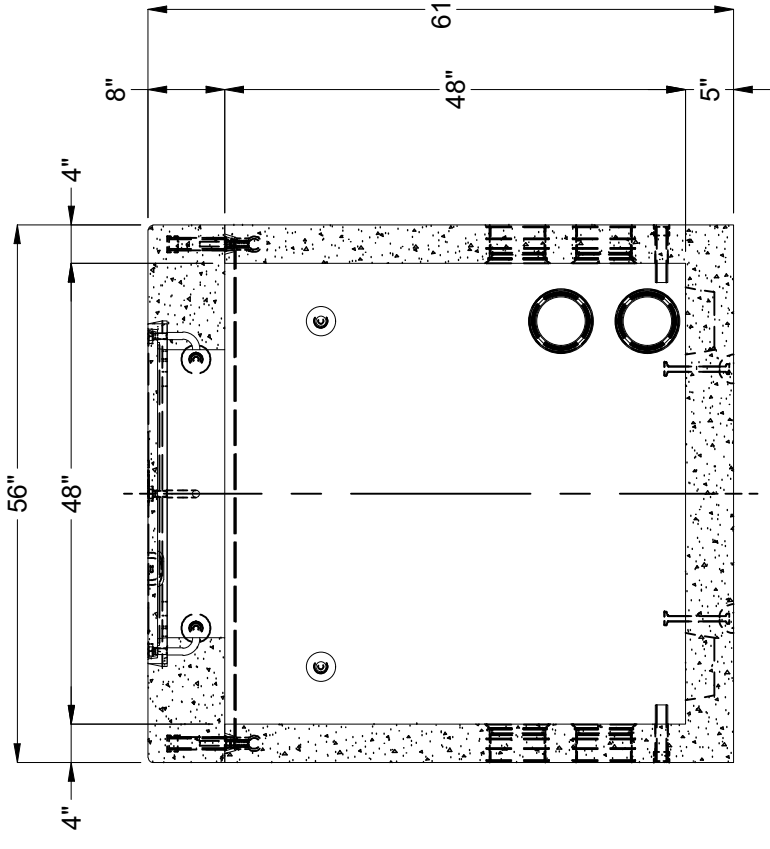
©2024 Jensen Precast. All rights reserved. All materials appearing as Jensen Precast documents and the like are proprietary work product and are protected under U.S. copyright and other laws. Unless in conjunction with business conducted with Jensen Precast, any use of Jensen Precast work product without express, written consent is prohibited, and recipient is prohibited from distributing any and all work product to non-approved third parties under penalty of civil action. This product shall only be produced in a Jensen Precast facility.

REV: B-2	DESCRIPTION: Vault Layout 4848x48 Terminators Sump 30"C Edison UGS SS564 Parkway RPM
SHEET: 38	LAYOUT DRAWING
1 OF 2	DRAWN BY: J. Prado
	MODIFIED: 5/31/2019

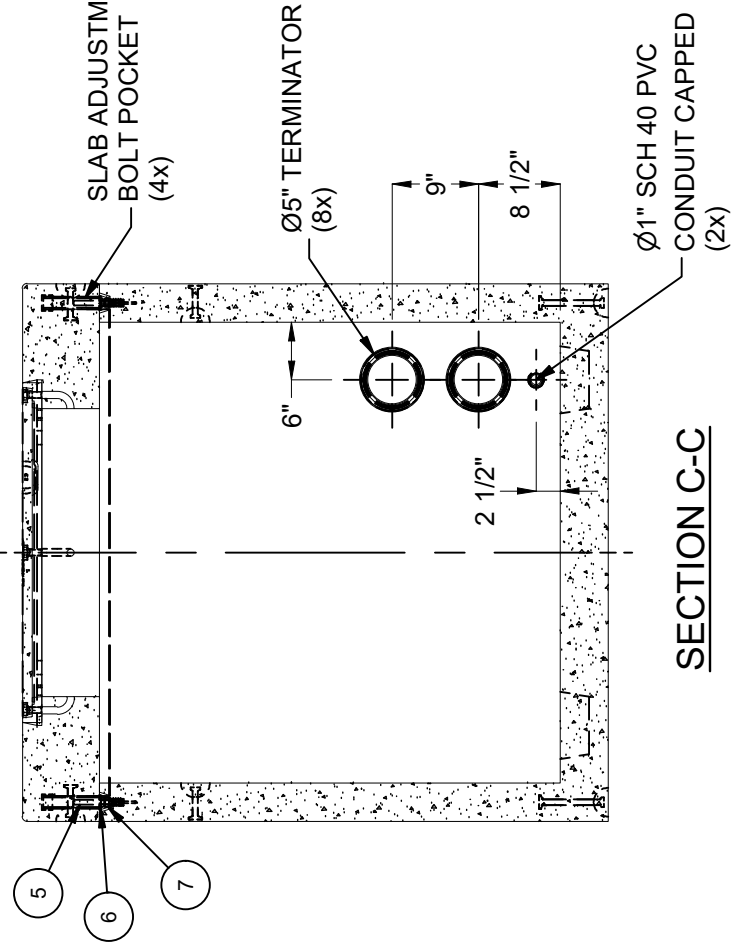
REVISION HISTORY		
REV	DESCRIPTION	DATE
B-1	INITIAL RELEASE INVENTOR	5/29/2024
	APPROVED	



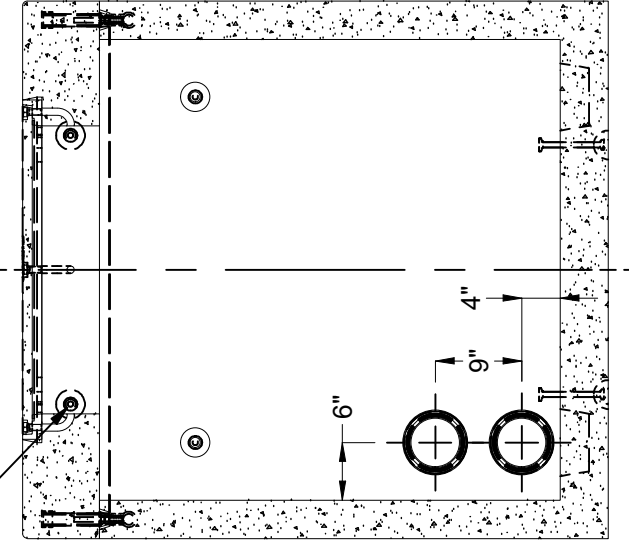
**SECTION A-A**



**SECTION B-B**



**SECTION C-C**



**SECTION D-D**

BURY DEPTH:	0.0' - 0.0' to Top
WATER LEVEL:	3.0'
DESIGN SPEC:	ACI 318, ASTM C857
AGENCY:	Edison
APPROX. WEIGHT:	6523.24 Lbs
LOADING SPEC:	A-16 (AASHTO HS20-44)
AGENCY SPEC:	UGS SS564

**JENSEN PRECAST** EST. 1968  
[WWW.JENSENPRECAST.COM](http://WWW.JENSENPRECAST.COM)

©2024, Jensen Precast. All rights reserved. All materials appearing as Jensen Precast documents and the like are proprietary work product and are protected under U.S. copyright and other laws. Unless in conjunction with business conducted with Jensen Precast, any use of Jensen Precast work product without express, written consent is prohibited, and recipient is prohibited from distributing any and all work product to non-approved third parties under penalty of civil action. This product shall only be produced in a Jensen Precast facility.

DESCRIPTION:	Vault Layout 4848x48 Terminators Sump 30°C Edison UGS SS564 Parkway RPM
LAYOUT REVIEW	
PART NUMBER:	100010423
DRAWN BY:	J. Prado
CREATED:	5/31/2019
MODIFIED:	5/29/2024