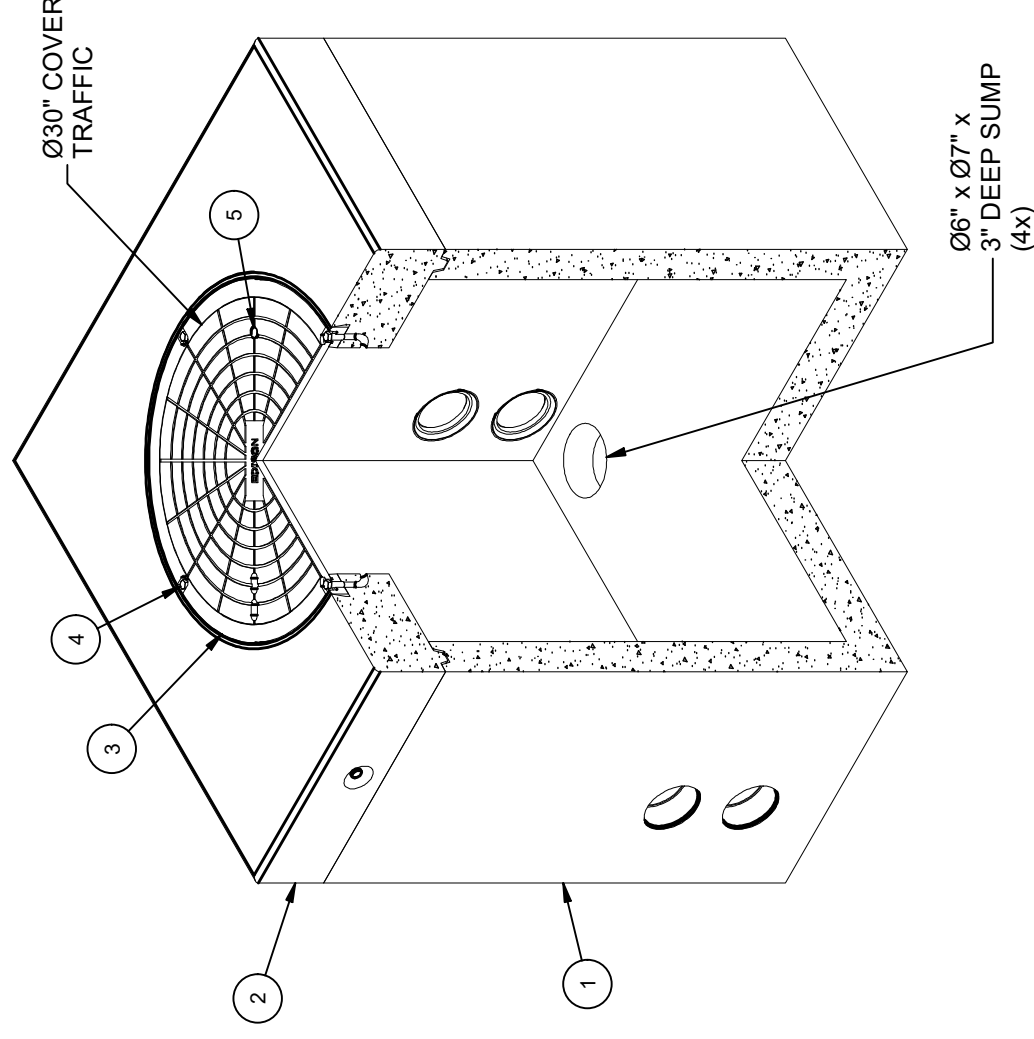


DESIGN NOTES

- DESIGNED IN ACCORDANCE WITH AASHTO HS20-44 TRAFFIC BRIDGE LOADING USING 5,500 PSI COMPRESSIVE STRENGTH CONCRETE AND 60,000 PSI YIELD STRENGTH ASTM A-706 STEEL REINFORCEMENT PER CALCS. #30479.
- COVER DESIGNED FOR TRAFFIC LOADING
- MINIMUM EXCAVATION SIZE: 5'-8" X 5'-8" X DEPTH REQ'D.
- VAULT TO BE PLACED ON A MIN. 6" BASE OF CRUSHER RUN FOR EASE OF INSTALLATION AND EVEN LOAD DISTRIBUTION.
- ALL PARTS TO BE STENCILED: MFG DATE / JOB NUMBER / PRODUCT ID / WEIGHT.
- FOR COMPLETE DESIGN AND PRODUCT INFORMATION CONTACT JENSEN PRECAST.

BILL OF MATERIALS

ITEM	UNIT QTY	QTY	PART NUMBER	DESCRIPTION	MASS (lb)
1	1	1	100012254	Vault 4848x48 Rect. Bottom Section Terminators Sump Edison UGS SS564	4693
2	1	1	100009197	Vault 4848x8 Slab Top 30"C Cast-In Frame Edison UGS SS564	1760
3	1	1	100006912	CI COVER 30DIA NF R-1581-0175 ASTM A48 CL35B BP B/D EDISON	224
4	1	4	100022412	PENTA BOLT 5/8-11 UNC 1-5/8 HD 304SS	
5	1	1	100008122	PLUG PICKHOLE NEOPRENE RUBBER CI COVER ED/LA	
6	1	4	100008115	STUD BOLT 1/2X5 UNC LEVELING PLAIN	
7	1	8	100002657	WASHER FLAT 1/2 REGULAR TYPE A RAW	
8	1	8	100007007	HEX NUT 1/2-13 UNC HEAVY GALV	
9	1.000 ul	1.000 ul	100005749	SEALANT JOINT BUTYL RUBBER ASTM C-990 AND M198 CS-102 1IN EQUIV X14.5FT PER BOX 118FT	



ISOMETRIC VIEW

LIFTING NOTES

FIELD INSTALLATION: PLANT DEMOLING: MINIMUM HANDLING CONCRETE STRENGTH F _c = 5500 PSI RIGGING EQUALIZER REQUIRED TO EQUALIZE LOAD TO 4 LIFTING POINTS WITH A SLING ANGLE BETWEEN 60° AND 90°	
BURY DEPTH:	0.0' - 0.0' to Top
WATER LEVEL:	3.0'
DESIGN SPEC:	ACI 318, ASTM C857
AGENCY:	Edison
APPROX. WEIGHT:	6678.19 Lbs
LOADING SPEC:	A-16 (AASHTO HS20-44)
AGENCY SPEC:	UGS SS564



EST. 1968

WWW.JENSENPRECAST.COM

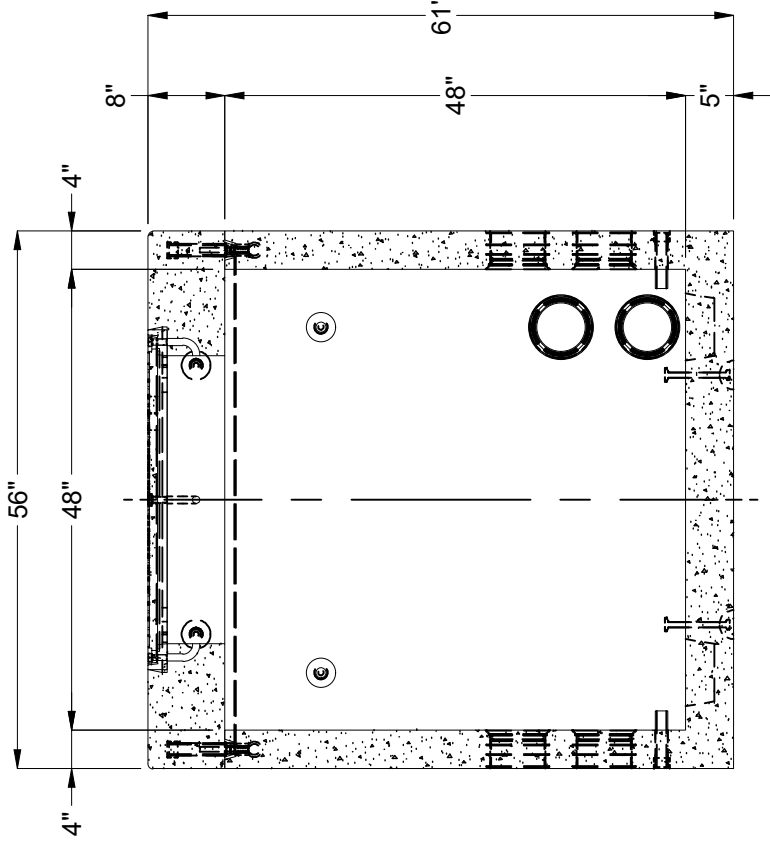
©2024 Jensen Precast. All rights reserved.
 All materials appearing as Jensen Precast documents and the like are proprietary work product and are protected under U.S. copyright and other laws.
 Unless in conjunction with business conducted with Jensen Precast, any use of Jensen Precast work product without express, written consent is prohibited, and recipient is prohibited from distributing any and all work product to non-approved third parties under penalty of civil action.
 This product shall only be produced in a Jensen Precast facility.

REV	DESCRIPTION	DATE	APPROVED
B	INITIAL RELEASE INVENTOR	5/30/2024	

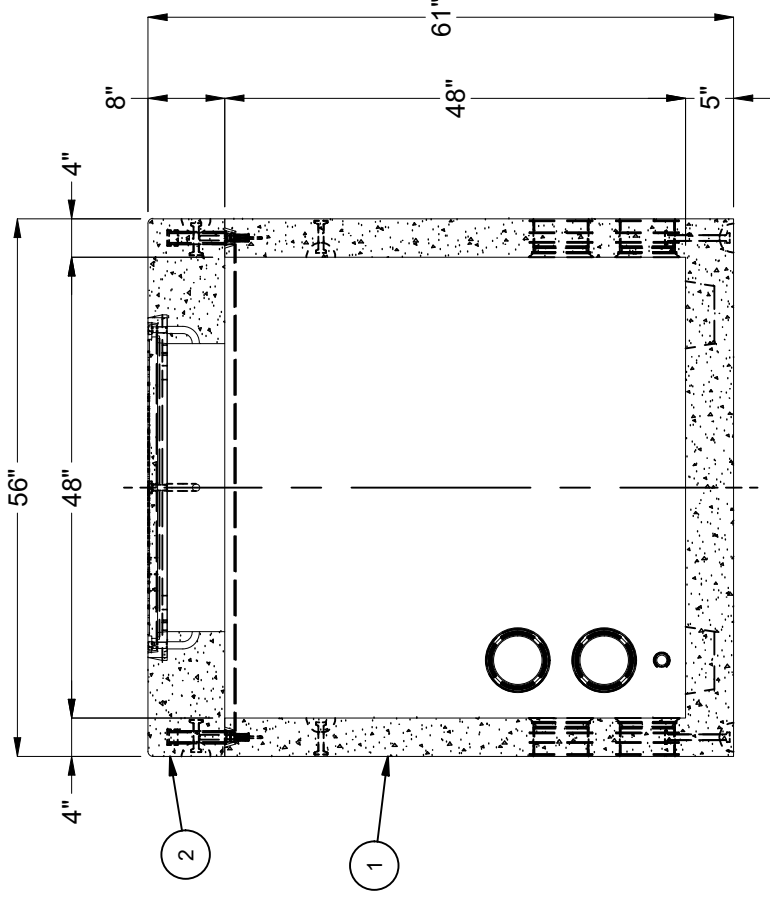
DESCRIPTION:	Vault Layout 4848x48 Terminators Sump 30°C Edison UGS SS564 Traffic
PART NUMBER:	100010424
CREATED:	5/31/2019
REV:	B-1
SHEET:	40
	1 OF 2

LAYOUT DRAWING	
DRAWN BY:	J. Prado
MODIFIED:	5/30/2024

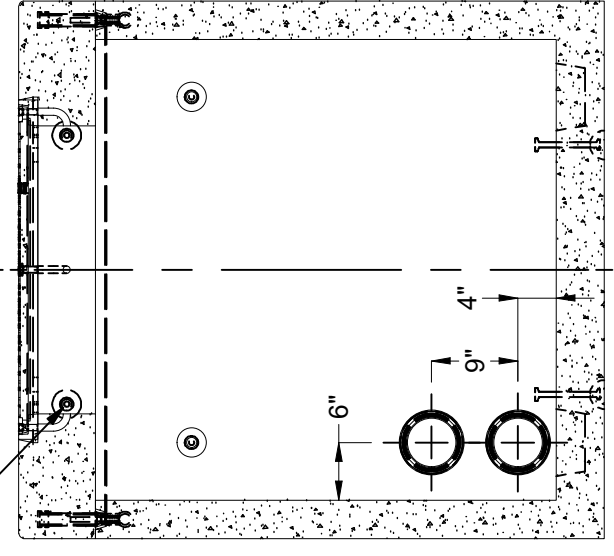
100010424.rvt



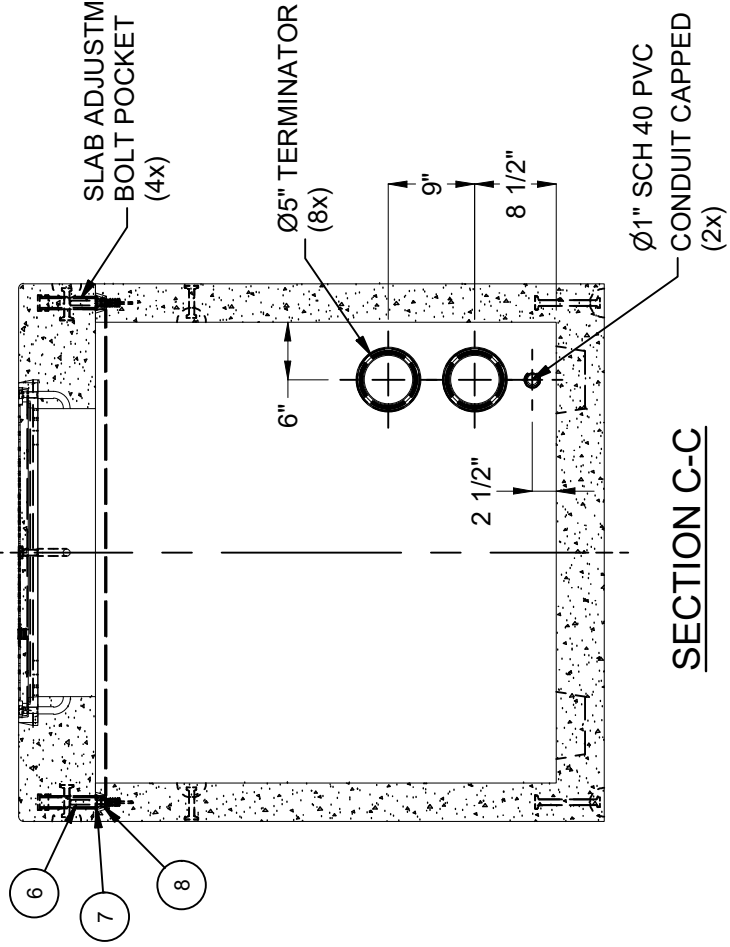
SECTION B-B



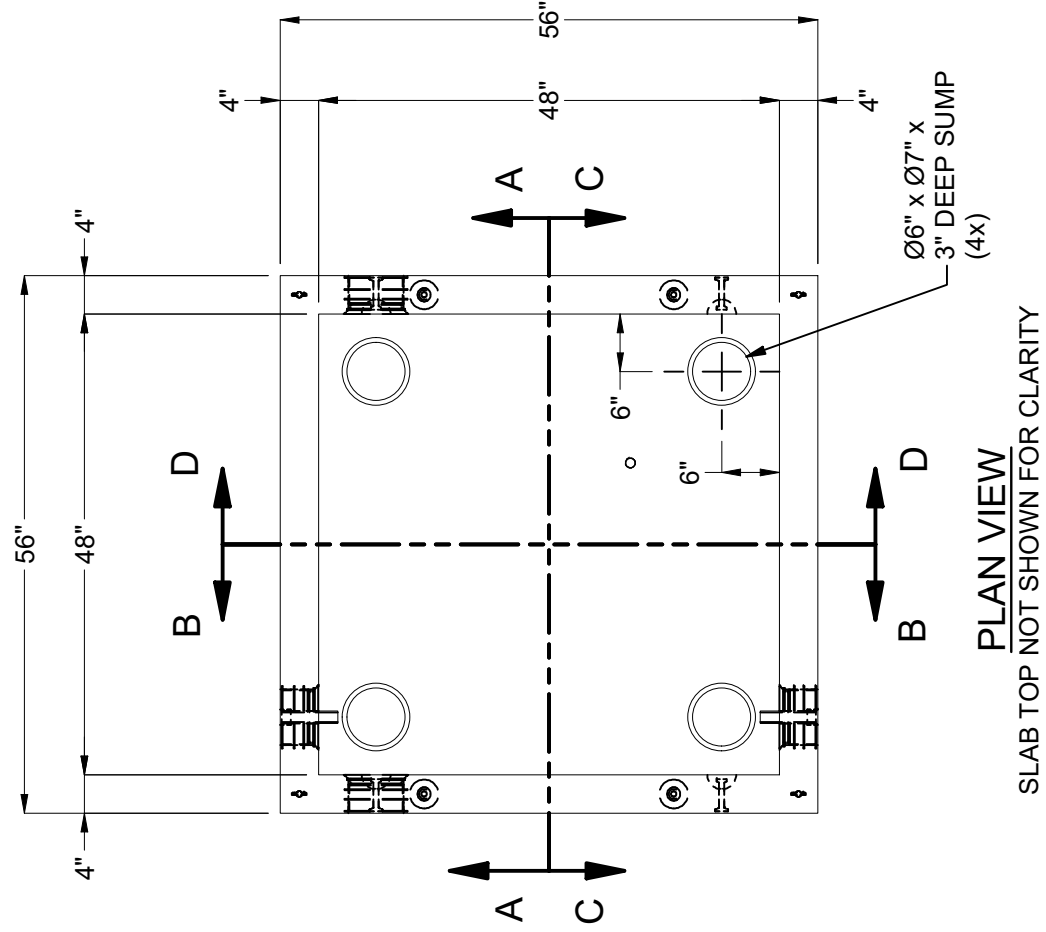
SECTION A-A



SECTION D-D



SECTION C-C



PLAN VIEW
SLAB TOP NOT SHOWN FOR CLARITY

BURY DEPTH:	0.0' - 0.0' to Top	DESCRIPTION:	Vault Layout 4848x48 Terminators Sump 30°C Edison UGS SS564 Traffic	REV:	B-1
WATER LEVEL:	3.0'	APPROX. WEIGHT:	6678.19 Lbs	LAYOUT REVIEW	SHEET: 41
DESIGN SPEC:	ACI 318, ASTM C857	LOADING SPEC:	A-16 (AASHTO HS20-44)	DRAWN BY:	J. Prado
AGENCY:	Edison	AGENCY SPEC:	UGS SS564	PART NUMBER:	100010424
				CREATED:	5/31/2019
				MODIFIED:	5/30/2024

©2024, Jensen Precast. All rights reserved. All materials appearing as Jensen Precast documents and the like are proprietary work product and are protected under U.S. copyright and other laws. Unless in conjunction with business conducted with Jensen Precast, any use of Jensen Precast work product without express, written consent is prohibited, and recipient is prohibited from distributing any and all work product to non-approved third parties under penalty of civil action. This product shall only be produced in a Jensen Precast facility.

JENSEN PRECAST EST. 1968
WWW.JENSENPRECAST.COM

100010424.rdw