

# 4'-0" x 4'-0" TRAFFIC VAULT 9" NECK WITH CONCRETE COVER

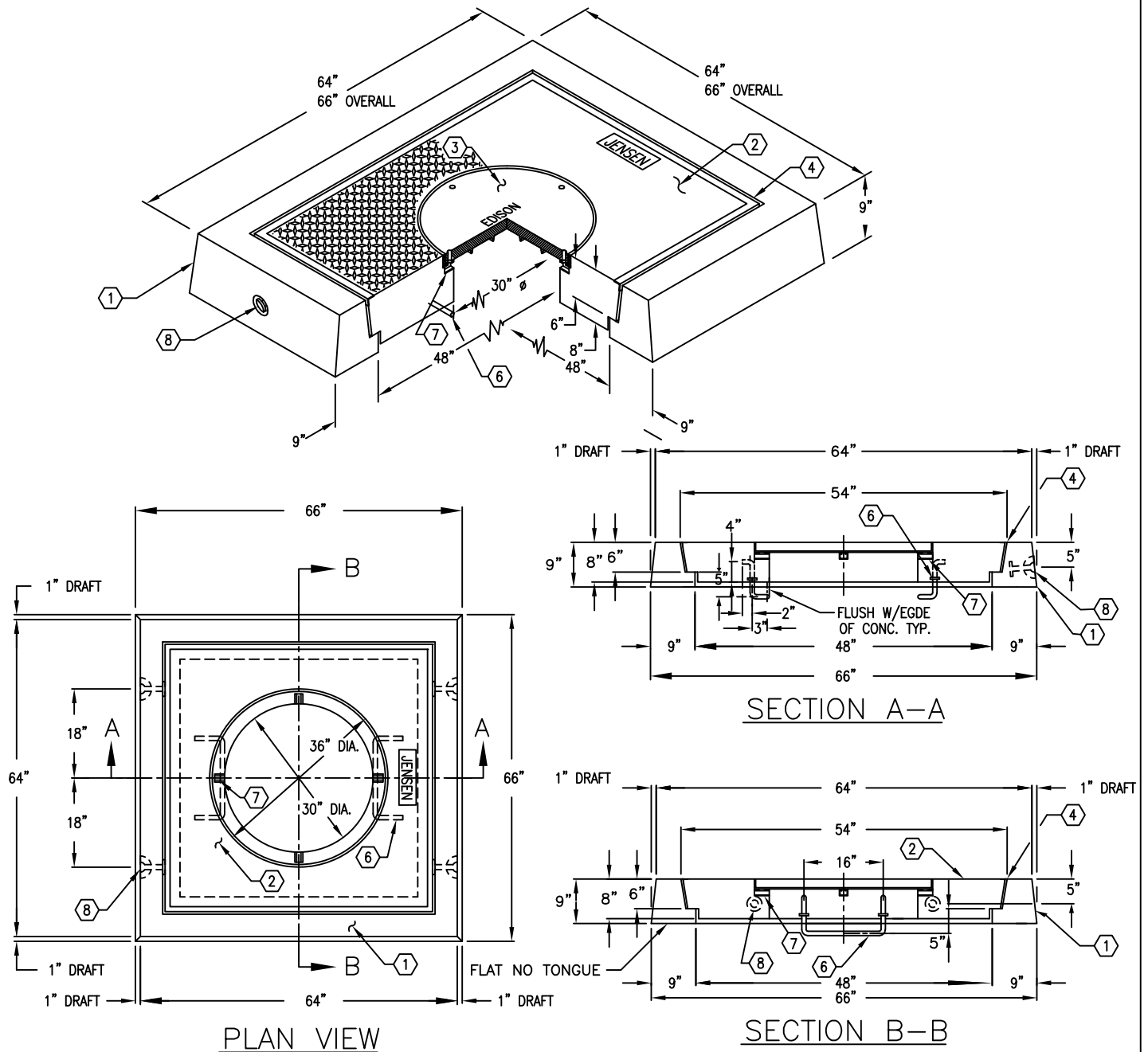
**NOTES:**

DESIGNED IN ACCORDANCE WITH AASHTO H-20-44 TRAFFIC LOADING USING 5,500 P.S.I. COMPRESSIVE STRENGTH CONCRETE AND 60,000 P.S.I. YIELD STRENGTH GRADE 60 A-706 STEEL REINFORCEMENT PER CALCS. # 31635.

1. VN44-N9, 9" NECK SECTION (CG-VN44-N9(485)). WT. 1,100 Lbs.
2. VN44-T8-MOD-11, 6" / 8" COVER SECTION (CG-VN44-T8-MOD(484), W/CAST-IN A-1106 RING (05-30-01). SURFACE TO BE DIAMOND PLATE IMPRINT (345-6). WT. 1,387 Lbs.
3. A-1106, 30" DIAMETER CAST IRON COVER MARKED "EDISON" (04-30-09). WT. 290 Lbs.
4. 3/8" x 8" EXPANDED FELT.
6. 3/4" DIAMETER GALVANIZED STRESS RELIEVED LADDER RUNG WITH (2) 1/4" THICK x 2 O.D. WASHERS, COVER SECTION (2) SURFACE MTD.
7. BOLT HOLE CLEAN OUTS (4 PLACES).
8. © 2 TON x 3/8" GALVANIZED RISS HANDLING ANCHOR, NECK SECTION (4) SHELL MTD.

**ORDERING INFORMATION:**

K44-VN9-11T FOR ASSEMBLY AS SHOWN.  
 APPROVED FOR EDISON SPEC. UGS-470 & UGS-660.  
 TOTAL WEIGHT FOR ASSEMBLY AS SHOWN IS 2,487 Lbs.



#	DATE	DESCRIPTION	BY

K44-VN9-11T

PER EDISON SPEC. UGS 470 & 660

07-02-02