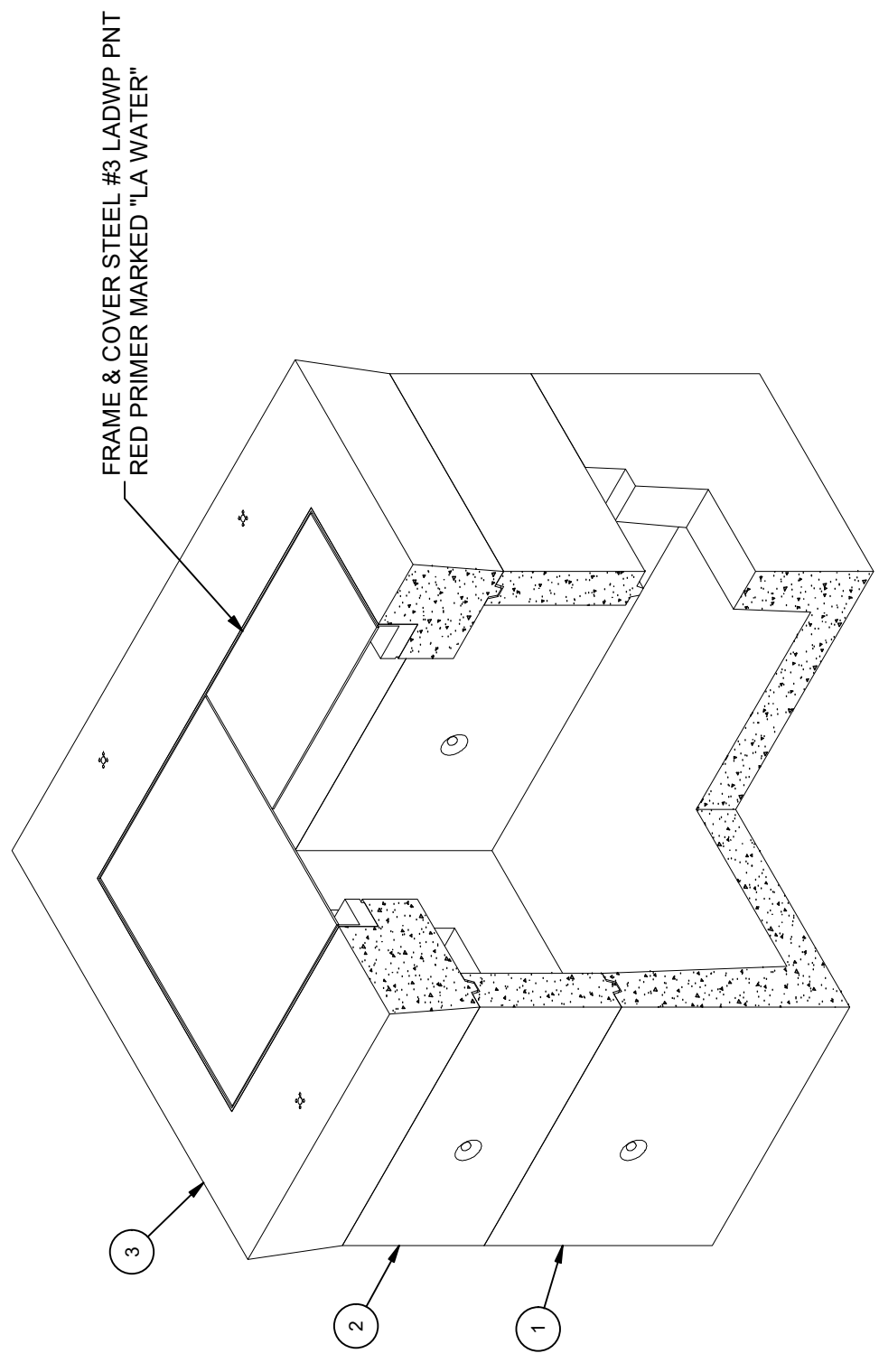


**DESIGN NOTES**

- CONCRETE DESIGNED IN ACCORDANCE WITH AASHTO H-20-44 TRAFFIC LOADING USING 5,500 PSI COMPRESSIVE STRENGTH CONCRETE AND 60,000 PSI YIELD STRENGTH GRADE 60 A-706 STEEL REINFORCEMENT PER CALCS. #30187.
- COVER MANUFACTURED IN ACCORDANCE WITH THE CITY OF LOS ANGELES DEPARTMENT OF WATER AND POWER DRAWING #C5072-2. COVER DESIGNED PER CALCS. #31613.
- MINIMUM EXCAVATION SIZE: 6'-0" X 7'-0" X DEPTH REQ'D.
- VAULT TO BE PLACED ON A MIN. 6" BASE OF CRUSHER RUN FOR EASE OF INSTALLATION AND EVEN LOAD DISTRIBUTION.
- DESIGNED AND MANUFACTURED IN ACCORDANCE WITH THE CITY OF LOS ANGELES DEPARTMENT OF WATER AND POWER DRAWING #C5189-R4.
- EACH CONCRETE SECTION SHALL BE MARKED ON THE INSIDE & OUTSIDE WITH "JENSEN PRECAST" THE DESIGNATION "DWP/FA-CN.", AND THE DATE OF POUR.
- EACH CONCRETE SECTION SHALL HAVE CAST-IN ON THE INSIDE "JENSEN", THE YEAR, AND THE DESIGNATION "FA-CN".
- CONCRETE MIX USED IN THIS PRODUCT SHALL USE FLY-ASH AND DCI AS AN ADMIXTURE.
- FOR COMPLETE DESIGN AND PRODUCT INFORMATION CONTACT JENSEN PRECAST.

**BILL OF MATERIALS**

ITEM	UNIT QTY	QTY	PART NUMBER	DESCRIPTION	MASS (lb)
1	1	1	100009177	Vault 4860x24 Rect. Bottom Section Slot LADWP C-5189, R4	4151
2	1	1	100012163	Riser 4860x18 LADWP C-5189, R4	1831
3	1	1	100009175	Vault 4860x12 Slab Top 26"x44"C Cast-In Cover LADWP C-5189, R4	2883
4	1	1	100005749	SEALANT JOINT BUTYL RUBBER ASTM C-990 AND M198 CS-102 1IN EQUIV X14.5FT PER BOX 118FT	



**ISOMETRIC VIEW**

**LIFTING NOTES**

- FIELD INSTALLATION: PLANT DEMOLING: MINIMUM HANDLING CONCRETE STRENGTH F<sub>c</sub> = 5500 PSI RIGGING EQUALIZER REQUIRED TO EQUALIZE LOAD TO 4 LIFTING POINTS WITH A SLING ANGLE BETWEEN 60° AND 90°
- BURY DEPTH: 0.0' - 0.0' to Top
- WATER LEVEL: 3.0'
- APPROX. WEIGHT: 8864.56 Lbs
- DESIGN SPEC: ACI 318, ASTM C857
- LOADING SPEC: A-16 (AASHTO HS20-44)
- AGENCY: LADWP
- AGENCY SPEC: C-5189, R4



©2024, Jensen Precast. All rights reserved. All materials appearing as Jensen Precast documents and the like are proprietary work product and are protected under U.S. copyright and other laws. Unless in conjunction with business conducted with Jensen Precast, any use of Jensen Precast work product without express, written consent is prohibited, and recipient is prohibited from distributing any and all work product to non-approved third parties under penalty of civil action. This product shall only be produced in a Jensen Precast facility.

REVISION HISTORY		DATE	APPROVED
REV	DESCRIPTION	DATE	APPROVED
B-1	INITIAL RELEASE INVENTOR	6/6/2024	

DESCRIPTION: Vault Layout 4860x42 Slot Sump 26"x44"C LADWP C-5189, R4

REV: B-1

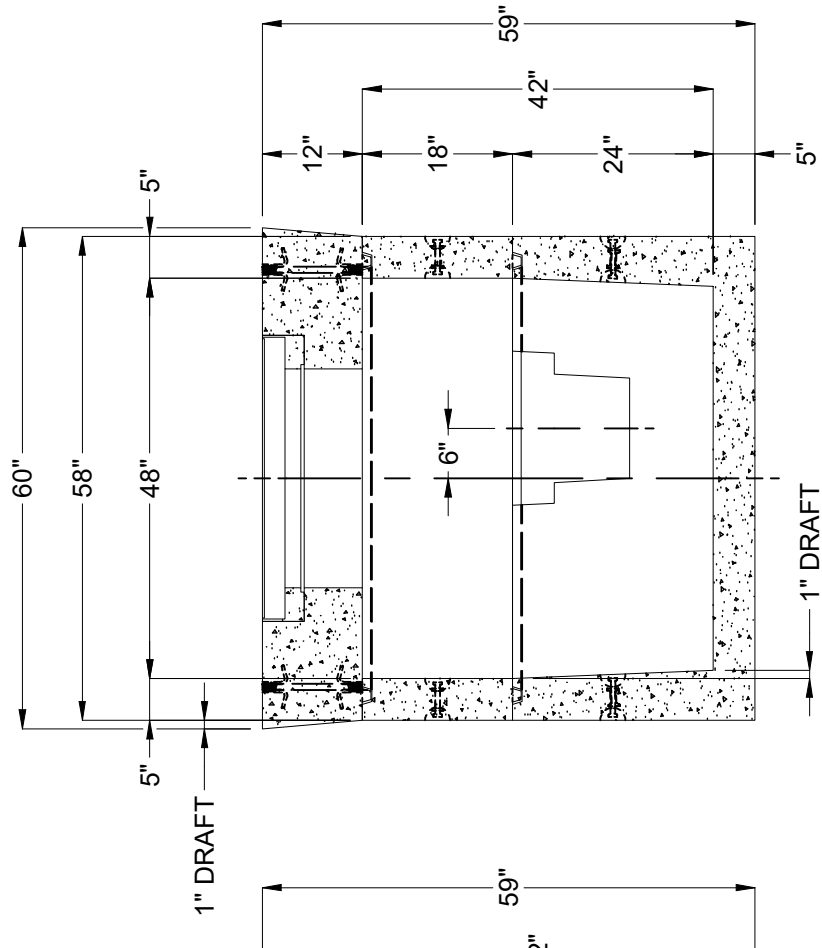
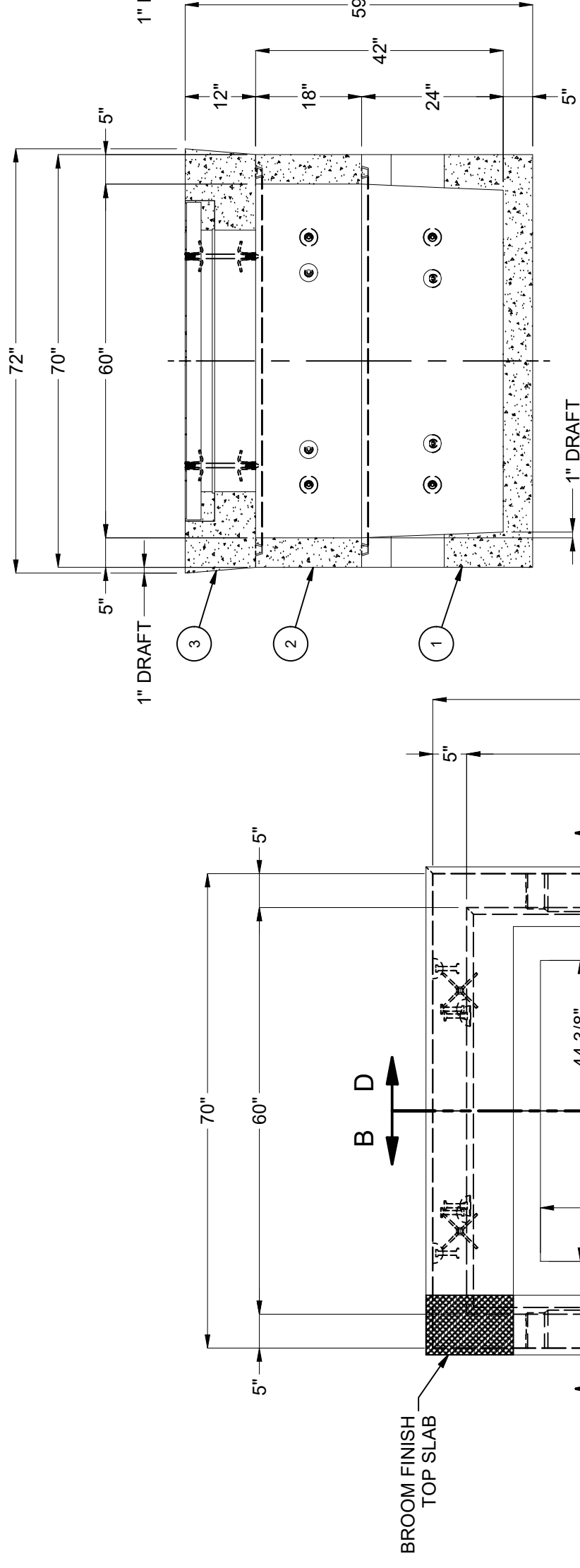
SHEET: 3

PART NUMBER: 100010437 LAYOUT REVIEW

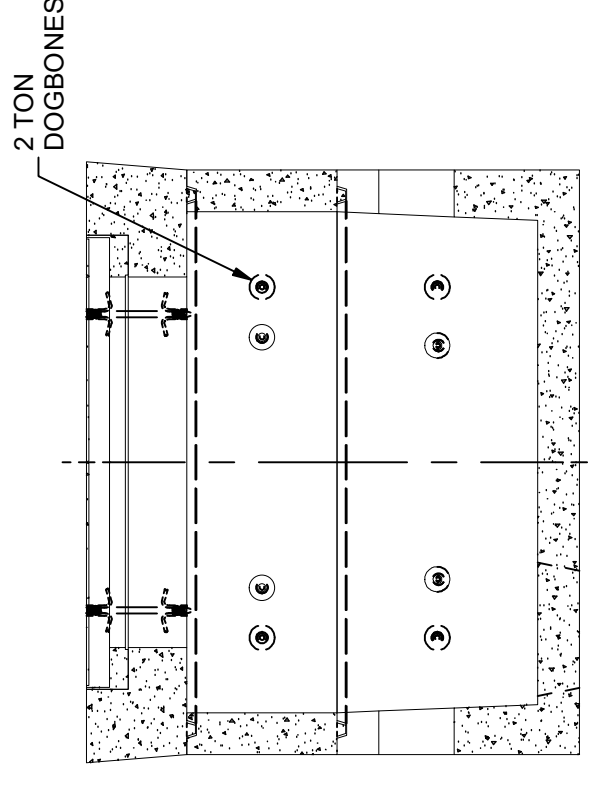
DRAWN BY: J. Prado

CREATED: 8/19/2020 MODIFIED: 6/6/2024

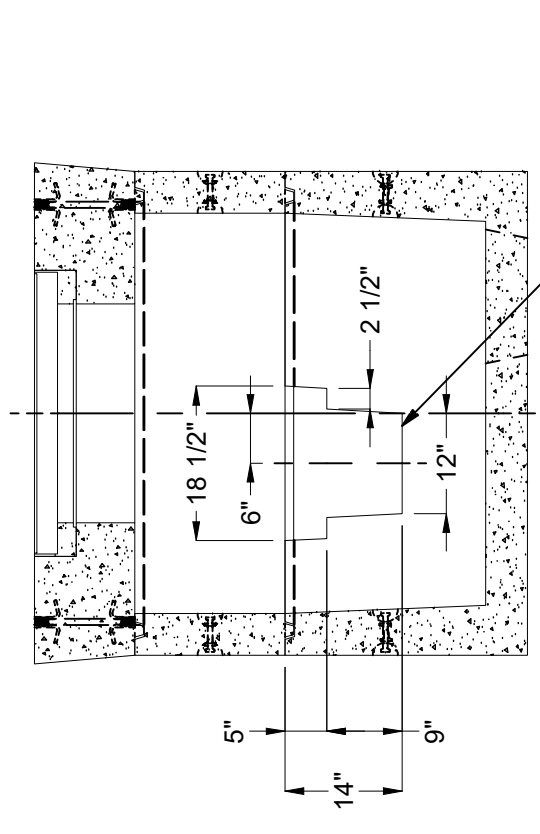
1 OF 2



SECTION A-A



SECTION D-D



BURY DEPTH:	0.0' - 0.0' to Top		
WATER LEVEL:	3.0'	APPROX. WEIGHT:	8864.56 Lbs
DESIGN SPEC:	ACI 318, ASTM C857	LOADING SPEC:	A-16 (AASHTO HS20-44)
AGENCY:	LADWP	AGENCY SPEC:	C-5189, R4

**JENSEN PRECAST** EST. 1968  
[WWW.JENSENPRECAST.COM](http://WWW.JENSENPRECAST.COM)

DESCRIPTION: Vault Layout 4860x42 Slot Sump 26"x44" C LADWP C-5189, R4  
 LAYOUT REVIEW  
 PART NUMBER: 100010437  
 DRAWN BY: J. Prado  
 CREATED: 8/19/2020  
 MODIFIED: 6/6/2024

100010437.rvt