

# 4'-0" x 5'-0" TRAFFIC VAULT NECK WITH CONCRETE COVER 49

## MATERIAL LIST-K45-VN12-11T

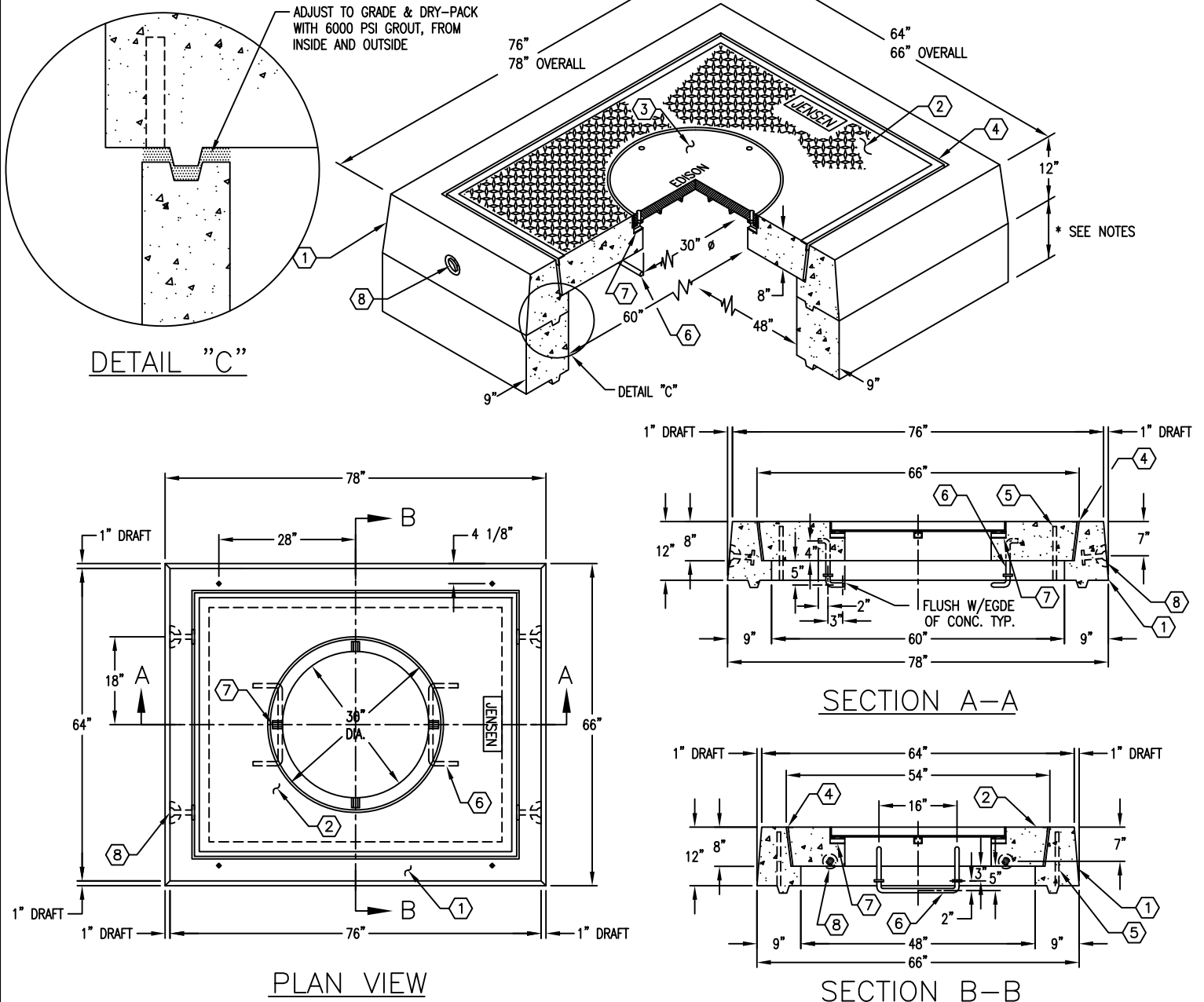
ITEM	PART NO.	DESCRIPTION	CAGE NO./ LOCATE
1	VN45-N12-11	12" NECK SECTION	CG-VN45-N12(104)
2	VN45-T8-11	8" COVER SLAB WITH CAST-IN 30" DIA. RING R1581	CG-VN45-T8(68)
	05-30-01	SURFACE TO BE DIAMOND PLATE IMPRINT	
3	04-30-09	30" DIA CAST IRON COVER MARKED "EDISON"	
4	25-20-08	3/8"x 8" EXPANDED FELT	NECK SECTION
5	HOLE	3/4" COIL THREADED ADJUSTING BOLT HOLE x 10-1/2" LONG	NECK SECTION
6	55-35-20	3/4"DIA. GALV. STRESS RELIEVED LADDER RUNG	COVER SECTION
		(2) 1/4" THICK x 2" O.D. WASHERS	
7	HOLE	BOLT CLEAN OUT HOLE	
8	55-20-405	4 TON x 4-3/4" GALVANIZED RISS HANDLING	NECK SECTION

EXTENSION ARE AVAILABLE IN THE FOLLOWING SIZES:

- A. VN45-R6, 6" RISER SECTION (CG-VN45-R6 (106). WT. 1,125 Lbs.
- B. VN45-R12, 12" RISER SECTION (CG-VN45-R12 (105). WT. 2,250 Lbs.

**NOTES:**

- VAULT NECK & COVER DESIGNED PER C-857, LOAD DESIGNATION A-16 (AASHTO H-20-44) TRAFFIC LOADING, USING 5,500 PSI CONCRETE AND ASTM A-706 GR.60 STEEL REINFORCEMENT PER CALCS. # 31635.



AUTOCAD 2015

#	DATE	DESCRIPTION	BY
H	08-11-15	ADDED TONGUE DETAIL	DF
J	08-20-15	FIXED SPELLING ERROR	DF

# K45-VN12-11T

PER EDISON SPEC. UGS VA470 & FC660 8-2-88