

4' x 6'-6" x 7' DUCTED VAULT MODEL K466-DV84-12

L.A.D.W.P. SPEC.
G-291 G3

STRUCTURE DESIGNED IN ACCORDANCE WITH:
AASHTO H-20 TRAFFIC BRIDGE LOADING
ASTM C-857 STANDARD PRACTICE FOR MINIMUM
STRUCTURAL DESIGN LOADING FOR UNDERGROUND
PRECAST CONCRETE UTILITY STRUCTURES

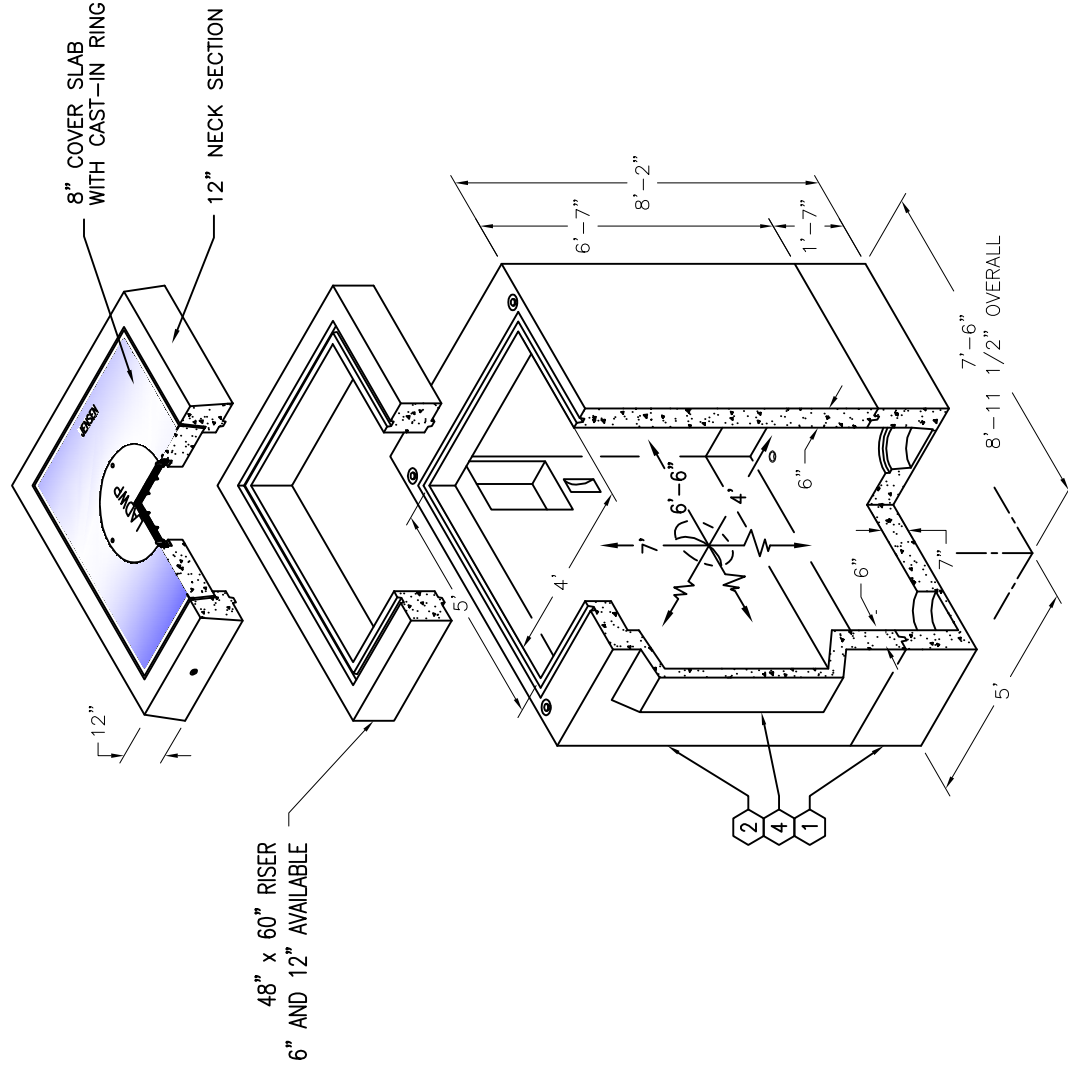
AMERICAN CONCRETE INSTITUTE ACI 318-05

CONCRETE COMPRESSIVE STRENGTH $F'_c = 5500$ PSI

REINFORCEMENT IN ACCORDANCE WITH ASTM A-706
WITH A YIELD STRENGTH OF $F_y = 60,000$ PSI.

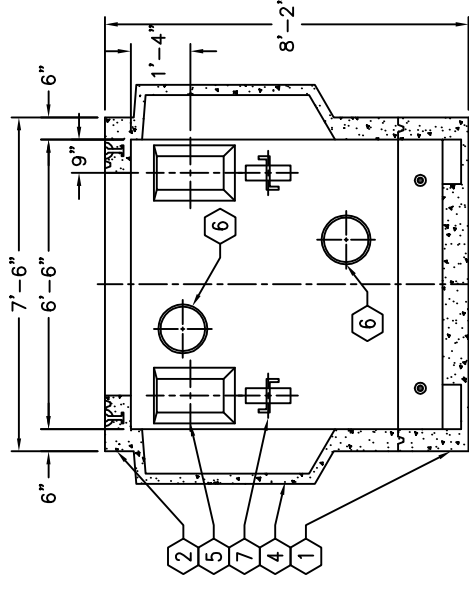
6" MINIMUM COMPACTED GRANULAR MATERIAL RECOMMENDED
FOR SUB-BASE FOR EASE OF INSTALLATION AND EVEN LOAD
DISTRIBUTION.

1. PB466-B12-12, 12" BOTTOM SECTION.
2. WT. 4,859#.
3. UV466-T72-12, 72" TOP SECTION. WT. 11,881#.
4. 12" x 13" DIA. SUMP x 5" DEEP WITH RECESS.
5. 18" x 44" DUCTED KNOCKOUT x 12" DEEP.
6. 9" x 18" KNOCKOUT x 4" DEEP.
7. 12" x 14" VENT KNOCKOUT. x 5" DEEP.
8. 7/8" DIA. GALV. PULL IRON.
9. 1/2" PLASTIC INSERT.
10. 1" DIA. TERMS FOR 5/8" DIA. GROUND ROD.
12" DIA. RECESS.

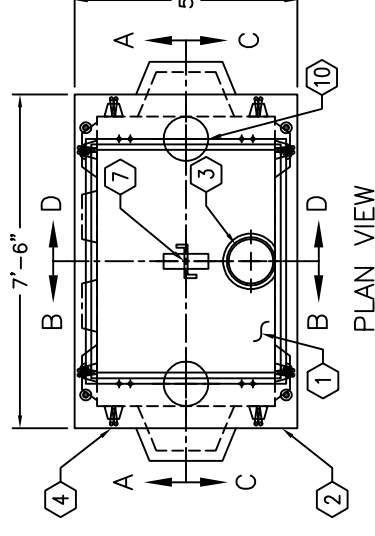


4' x 6'-6" x 7' DUCTED VAULT MODEL K466-DV84-12

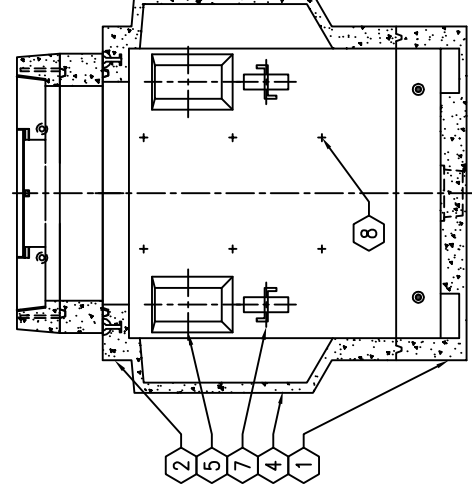
L.A.D.W.P. SPEC.
G-291 G3



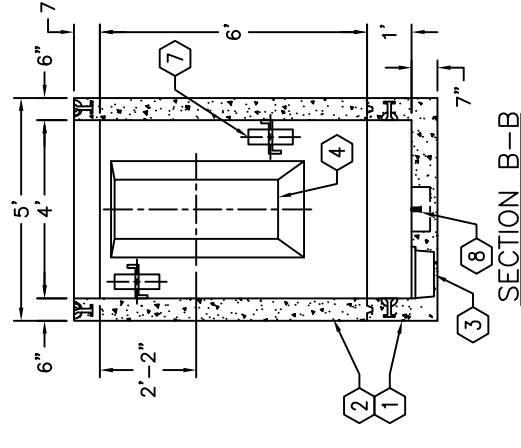
SECTION A-A



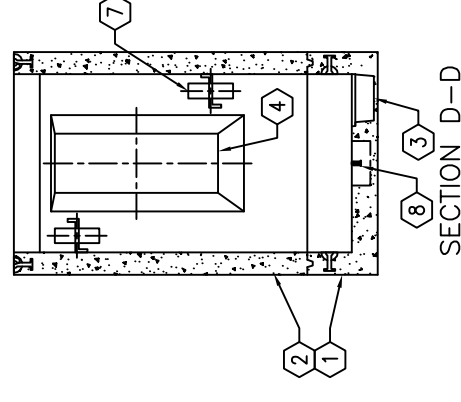
PLAN VIEW



SECTION C-C



SECTION B-B



SECTION D-D

NOTES:

STRUCTURE DESIGNED IN ACCORDANCE WITH:

AASHTO H-20 TRAFFIC BRIDGE LOADING

ASTM C-857 STANDARD PRACTICE FOR MINIMUM
STRUCTURAL DESIGN LOADING FOR UNDERGROUND
PRECAST CONCRETE UTILITY STRUCTURES

AMERICAN CONCRETE INSTITUTE ACI 318-05

CONCRETE COMPRESSIVE STRENGTH $F'_c = 5500$ PSI

REINFORCEMENT IN ACCORDANCE WITH ASTM A-706
WITH A YIELD STRENGTH OF $F_y = 60,000$ PSI.

6" MINIMUM COMPACTED GRANULAR MATERIAL RECOMMENDED
FOR SUB-BASE FOR EASE OF INSTALLATION AND EVEN LOAD
DISTRIBUTION.