

# 4' x 6'-6" x 3'-6" TRAFFIC SERVICE VAULT

MODEL K466-FH42-12

L.A.D.W.P. SPEC.  
C-5181

**NOTES:**

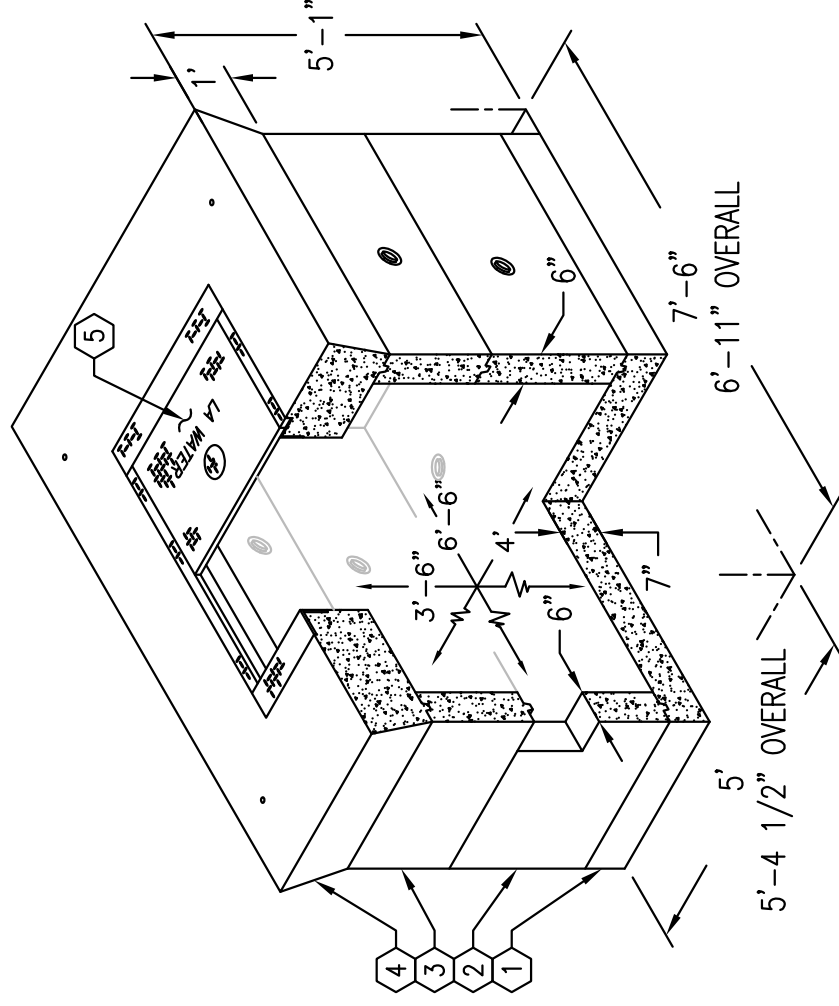
STRUCTURE DESIGNED IN ACCORDANCE WITH:  
AASHTO H-20 TRAFFIC BRIDGE LOADING  
ASTM C-857 STANDARD PRACTICE FOR MINIMUM  
STRUCTURAL DESIGN LOADING FOR UNDERGROUND  
PRECAST CONCRETE UTILITY STRUCTURES

AMERICAN CONCRETE INSTITUTE ACI 318-05

CONCRETE COMPRESSIVE STRENGTH  $f'_c = 5500$  PSI  
REINFORCEMENT IN ACCORDANCE WITH ASTM A-706  
WITH A YIELD STRENGTH OF  $F_y = 60,000$  PSI.

6" MINIMUM COMPACTED GRANULAR MATERIAL RECOMMENDED  
FOR SUB-BASE FOR EASE OF INSTALLATION AND EVEN LOAD  
DISTRIBUTION.

1. PB466-B-12, 7" THICK BASE SLAB. WT. 3,346 Lbs.
2. PB466-I24-12, 24" INTERMEDIATE SECTION. WT. 3,539 Lbs.
3. PB466-R18-12, 18" EXTENSION SECTION. WT. 2,640 Lbs.
4. PB466-T12-123, 12" THICK TOP SLAB. WT. 5,280 Lbs.
5. L.A. #3, TWO PIECE TRAFFIC HINGED COVER W/(2)  
6. 3/8" DIA. READING LIDS. RED PRIMER FINISH. CAST INTO  
TOP SLAB. COVERS MARKED WITH THE WORDS "LA WATER".  
14" x 15" DIAMETER SUMP x 7" DEEP.
6. 10 1/2" x 12" THRU OPENING.
- 7.



MINIMUM EXCAVATION SIZE:  
6'-5" x 8'-11" x REQ'D DEPTH

# 4' x 6'-6" x 3'-6" TRAFFIC SERVICE VAULT

MODEL K466-FH42-12

L.A.D.W.P. SPEC.  
C-5181

