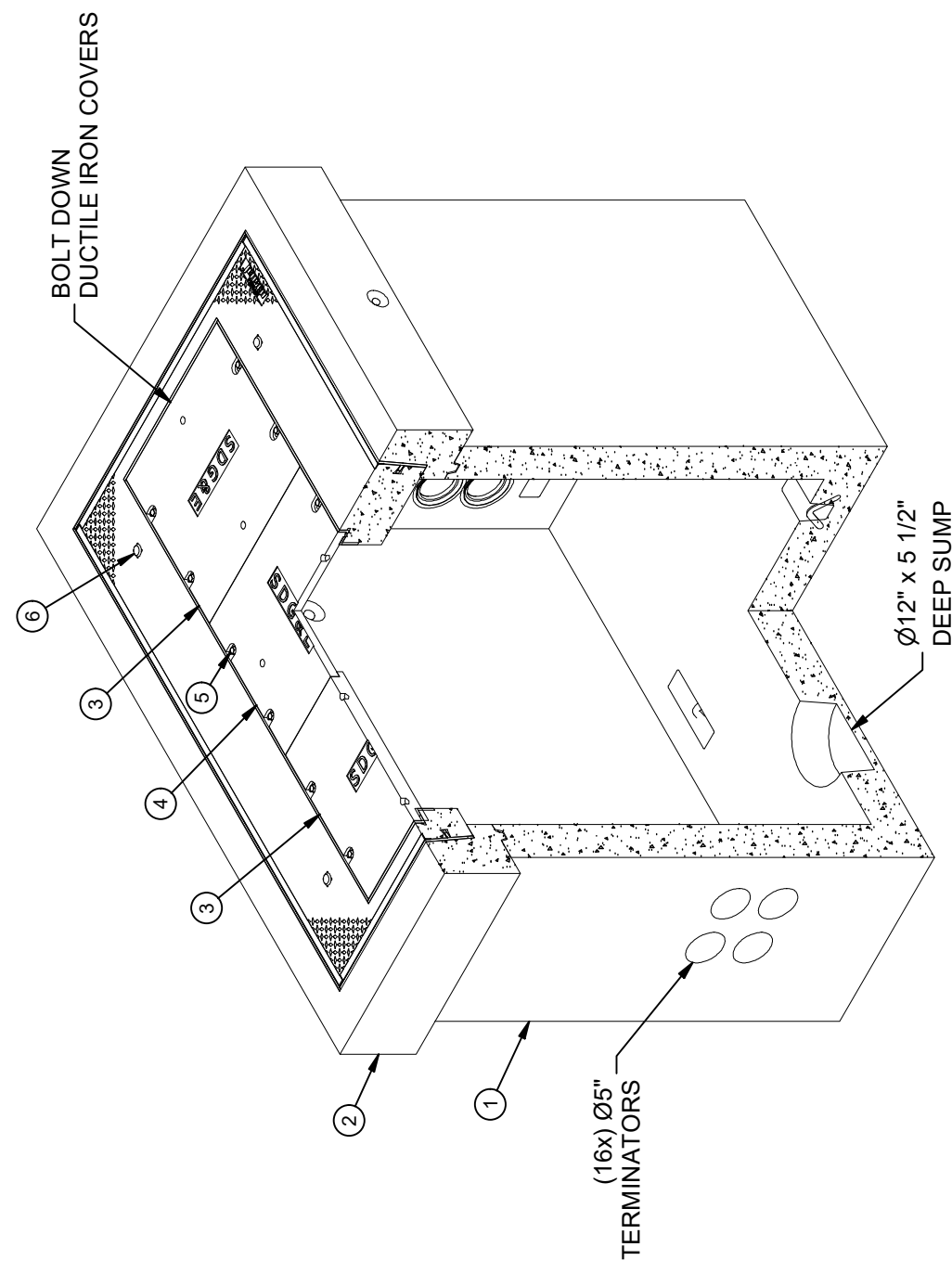


DESIGN NOTES	
■	DESIGNED IN ACCORDANCE WITH C-857(AASHTO H-20-44) TRAFFIC BRIDGE LOADING USING 6,000 PSI COMPRESSIVE STRENGTH CONCRETE AND 60,000 PSI YIELD STRENGTH ASTM A-706 STEEL REINFORCEMENT PER CALCS. #34563.
■	COVER DESIGN FOR TRAFFIC LOADING
■	MINIMUM EXCAVATION SIZE: 6'-6" X 9'-0" X DEPTH REQ'D.
■	VAULT TO BE PLACED ON A MIN. 6" BASE OF CRUSHER RUN FOR EASE OF INSTALLATION AND EVEN LOAD DISTRIBUTION.
■	EXTERIOR SURFACES OF STRUCTURE(S) SHALL BE COATED WITH IMRAE COATMASTERS 7007.
■	STRUCTURES TO BE STENCILED, "JENSEN PRECAST", WITH "TIME" AND "DATE OF POUR", AND SDGE STOCK NUMBER ON EXTERIOR AND INTERIOR WALLS.
■	FOR COMPLETE DESIGN AND PRODUCT INFORMATION CONTACT JENSEN PRECAST.

CROSS REFERENCE		
JENSEN PART No.	SHORT DESCRIPTION	SDGE STOCK No.
100012989	3315 60" base	S334536
200044340	3315 Intermediate 12"	S336246
100009298	3315 Traffic Cover	S287736
100009300	3315 Traffic Neck	S287738
100006961(QTY.1)	3315/3316 Ductile Iron cover	S287734
100006962(QTY.2)		
100010459	3315 Complete Traffic Kit	S400308

LIFTING NOTES	
■ FIELD INSTALLATION: PLANT DEMOLING: MINIMUM HANDLING CONCRETE STRENGTH F _c = 5500 PSI RIGGING EQUALIZER REQUIRED TO EQUALIZE LOAD TO 4 LIFTING POINTS WITH A SLING ANGLE BETWEEN 60° AND 90°	
BURY DEPTH:	0.0' - 0.0' to Top
WATER LEVEL:	3.0'
DESIGN SPEC:	ASTM C857, ACI 318
AGENCY:	SDGE
WEIGHT:	16040.94 Lbs
LOADING SPEC:	A-16 (AASHTO HS20-44)
AGENCY SPEC:	3315

BILL OF MATERIALS					
ITEM	UNIT QTY	QTY	PART NUMBER	DESCRIPTION	MASS(lb)
1	1	1	100012989	Vault 4878x60 Rect. Bottom Section Terminators Sump SDGE 3315	11546
2	1	1	200036059	Utility Vault 4878 Assembly SDGE 3315	4167
3	1	2	100006962	CI COVER 24X72 SBF A-1472-B ASTM A48 CL-35B OUTER SDGE	113
4	1	1	100006961	CI COVER 24X72 SBF A-1472-A ASTM A48 CL35B CENTER SDGE	100
5	1	12	100008105	PENTA BOLT 1/2-13 UNC 2-1/2 304SS W/CAPWASH	
6	1	4	100008123	PLUG VN CONCRETE SLAB PLASTIC	
7	5.250 gal	5.250 gal	100038043	COATING WATERPROOFING CoatMasters CM7007 IMRAE	
8	1.000 ul	1.000 ul	100005749	SEALANT JOINT BUTYL RUBBER ASTM C-990 AND M198 CS-102 1IN EQUIV X14.5FT PER BOX 118FT	



ISO VIEW

REVISION HISTORY		
REV	DESCRIPTION	DATE
B-1	INITIAL RELEASE	7/22/2021

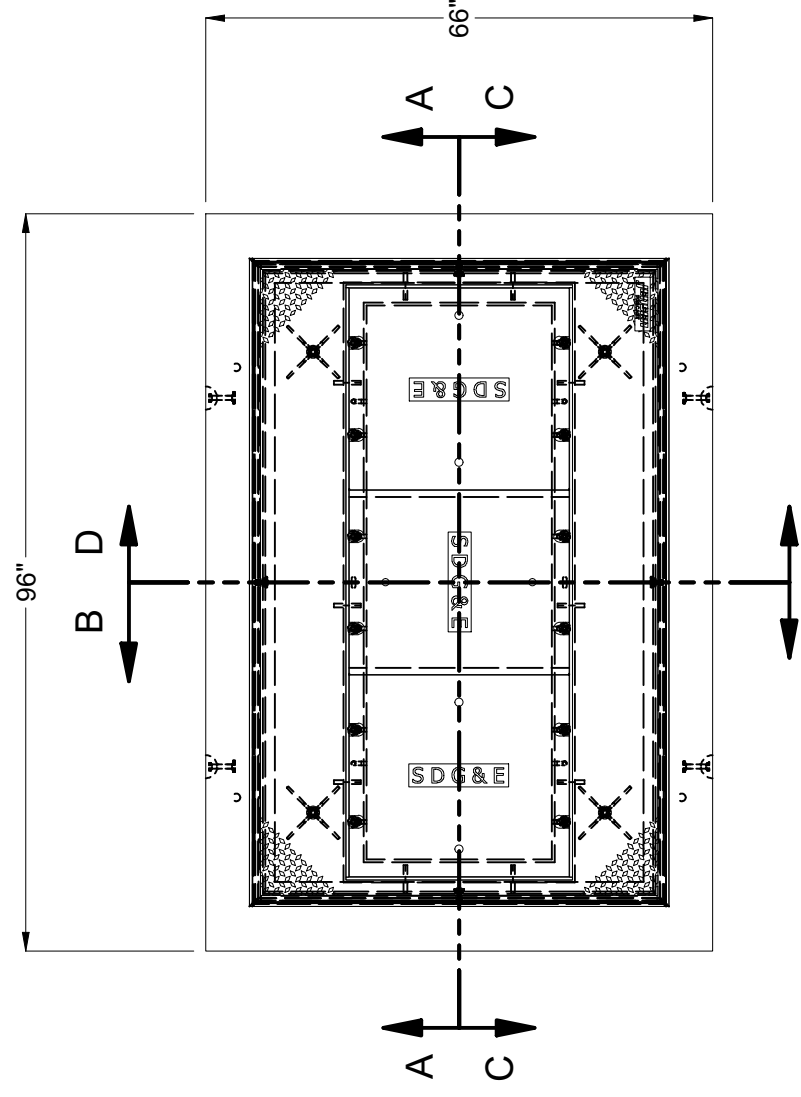
DESCRIPTION:	Pull Box 4878 Layout Assembly SDGE 3315 Ext. Coating - Waterproof IMRAE CM7007
PART NUMBER:	100010459
CREATED:	9/26/2019
DRAWN BY:	J. Prado
MODIFIED:	7/22/2021

REV:	B-2
SHEET:	27
1 OF 2	

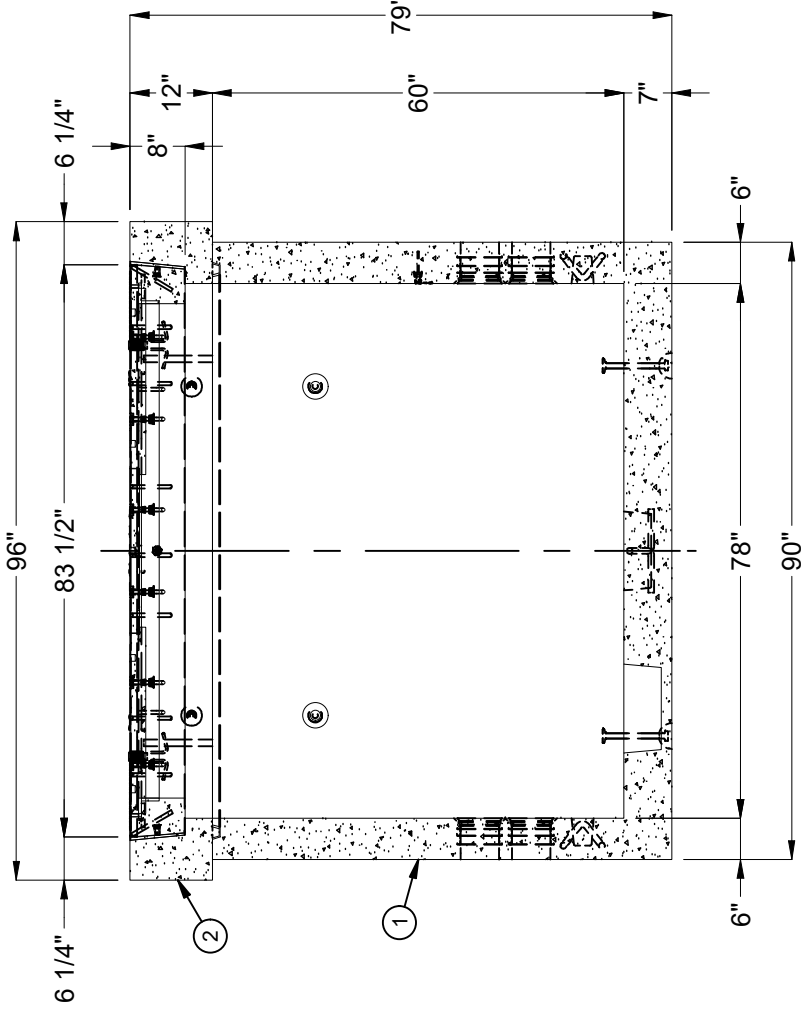
©2019 Jensen Precast-All rights reserved. All materials appearing as Jensen Precast documents and the like are proprietary work product and are protected under U.S. copyright and other laws. Unless in conjunction with business conducted with Jensen Precast, any use of Jensen Precast work product without express, written consent is prohibited, and recipient is prohibited from distributing any and all work product to non-approved third parties under penalty of civil action.

JENSEN PRECAST EST. 1968
 WWW.JENSENPRECAST.COM

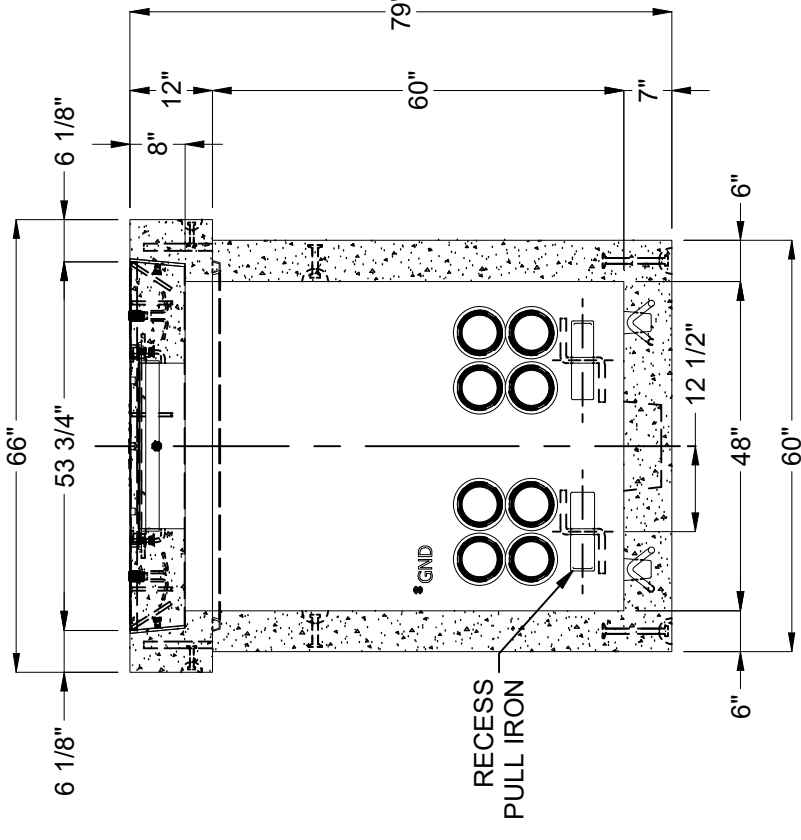
100010459.rvt



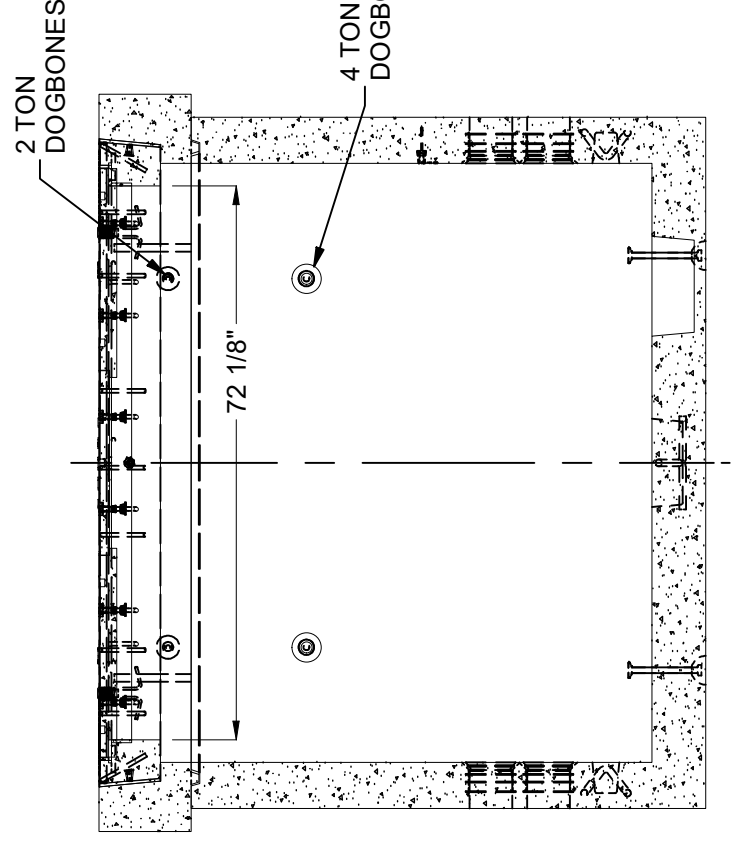
PLAN VIEW
NECK & COVER



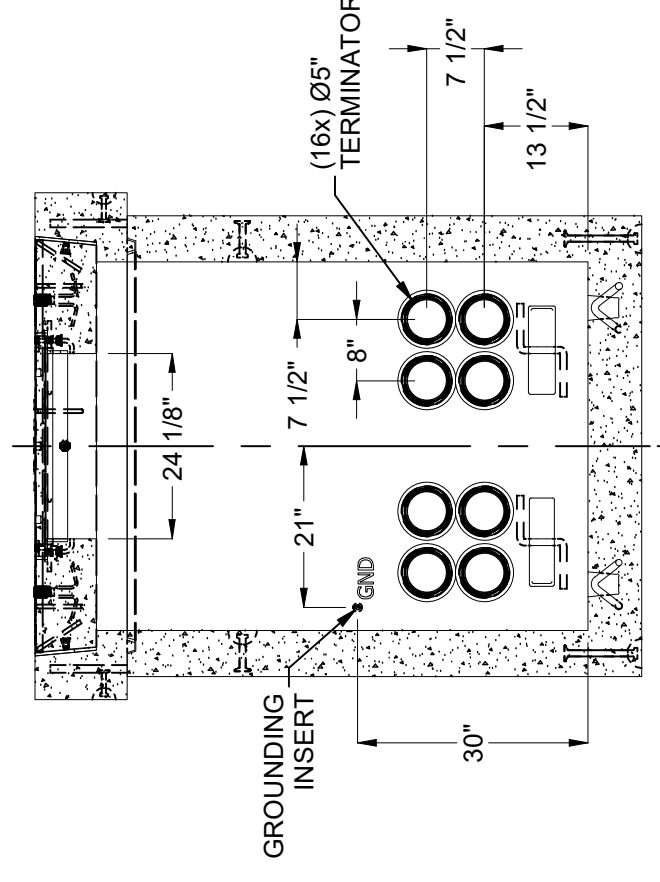
SECTION A-A



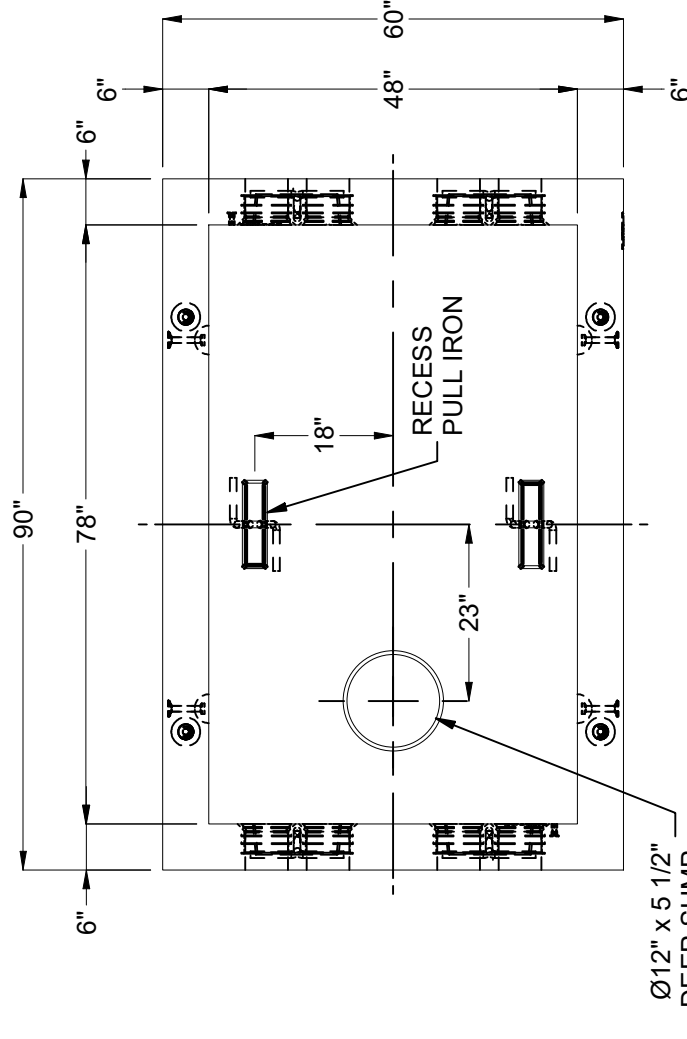
SECTION B-B



SECTION C-C



SECTION D-D



PLAN VIEW
W/O NECK & COVER

BURY DEPTH:	0.0' - 0.0' to Top
WATER LEVEL:	3.0'
DESIGN SPEC:	ASTM C857, ACI 318
AGENCY:	SDGE
WEIGHT:	16040.94 Lbs
LOADING SPEC:	A-16 (AASHTO HS20-44)
AGENCY SPEC:	3315

JENSEN PRECAST EST. 1968
WWW.JENSENPRECAST.COM

©2019 Jensen Precast. All rights reserved. All materials appearing as Jensen Precast documents and the like are proprietary work product and are protected under U.S. copyright and other laws. Unless in conjunction with business conducted with Jensen Precast, any use of Jensen Precast work product without express, written consent is prohibited, and recipient is prohibited from distributing any and all work product to non-approved third parties under penalty of civil action.

DESCRIPTION:	Pull Box 4878 Layout Assembly SDGE 3315 Ext. Coating - Waterproof IMRAE CM7007
PART NUMBER:	100010459
CREATED:	9/26/2019
LAYOUT DRAWING	DRAWN BY: J. Prado
MODIFIED:	7/22/2021