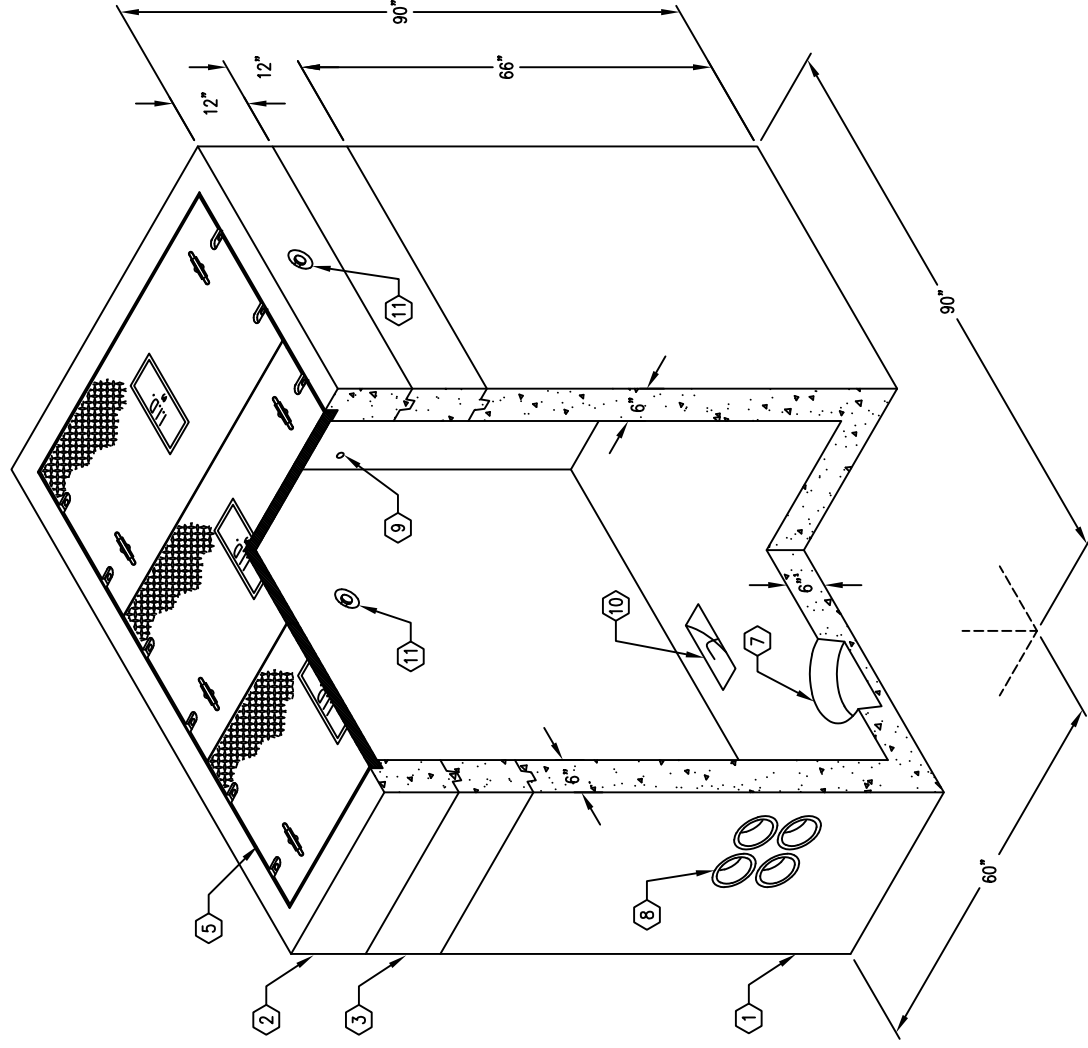


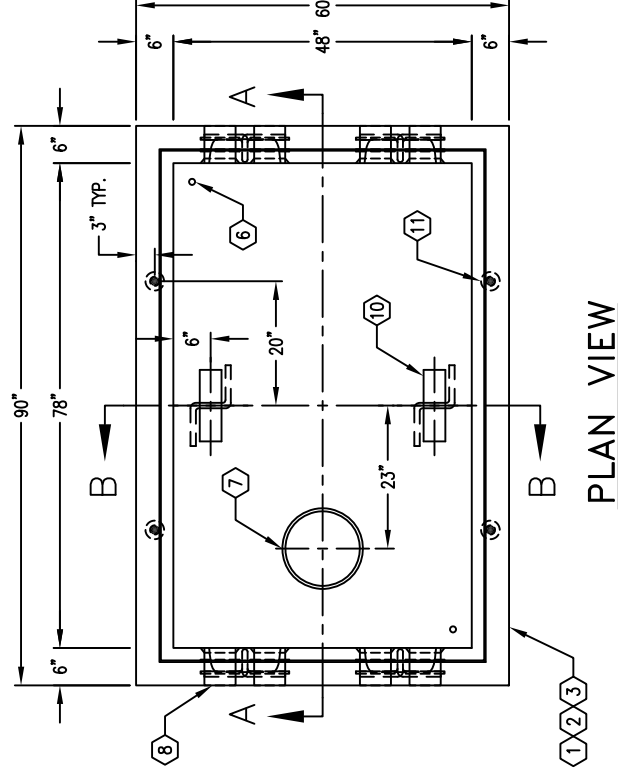
4'-0" x 6'-6" PARKWAY MEDIUM MANHOLE x 7'-0" DEEP

NOTES:

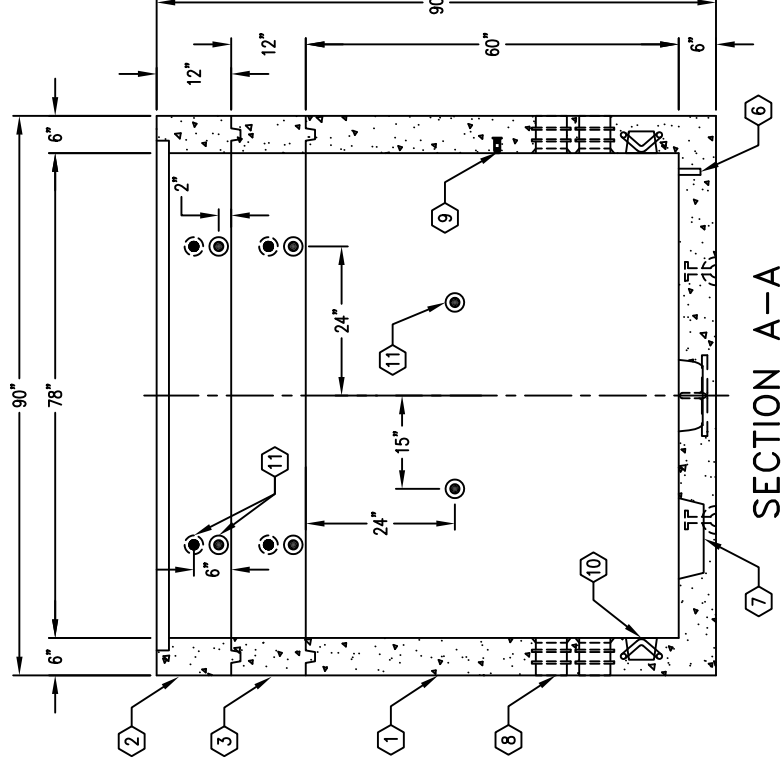
- CONCRETE IS DESIGNED FOR H-20-44 TRAFFIC LOADING USING 5,500 PSI [37.92MPa] COMPRESSIVE STRENGTH CONCRETE AND 60,000 PSI [413.2MPa] YIELD STRENGTH ASTM A-706 STEEL REINFORCEMENT PER CALCS. #31725.
- POLYMER CONCRETE COVER DESIGNED FOR PARKWAY LOADING. 300 PSF.
- HANDHOLE TO BE PLACED ON A 6" BASE OF CRUSHER RUN FOR EASE OF INSTALLATION AND EVEN LOAD DISTRIBUTION.
- 7/8" x 1 3/4" CONSEAL GASKET (45 FT. REQ'D) WILL BE SHIPPED WITH EACH HANDHOLE.
- 1. PB466-B60-25, 60" BTM SECTION (CG-466-B60-25), WT.11,650 lbs.
- 2. PB466-T12-25, 12" TOP SECTION (CG-466-T12-25) GALV. ANGLE FRAME CAST-IN, (F466-PB-RPM) WT. 1,750 lbs.
- 3. PB466-R12, 12" GRADE RING (CG-466-R12), WT. 1,750 lbs.
- 4. PB466-R24, 24" EXTENSION SECTION (R466-R24), WT. 3,450 lbs. (NOT SHOWN. AVAILABLE ON SPECIAL ORDER.)
- 5. 3-PIECE POLYMER CONCRETE W/(12) 1/2"-13NC x 2 1/2" S.S.P.H. BOLTS FOR BOLT DOWN, & MARKED 'I.I.D.', 369 lbs.
- 6. 1" DIA. GROUND ROD KNOCK OUT. LOCATE AS FOLLOWS: BOTTOM SECTION (2) CORE MTD.
- 7. 12" x 13" DIA. SUMP x 4" DEEP (5000-356). LOCATE AS FOLLOWS: BOTTOM SECTION (1) CORE MTD.
- 8. 5" CONTERM (55636). LOCATE AS FOLLOWS: BOTTOM SECTION (16) CORE MTD.
- 9. 1/2" DIA. BRONZE GROUND INSERT WELDED TO REIN. W/PLASTIC PLUG. MARKED "GRD" IN RED. BOTTOM SECTION (2) CORE MTD.
- 10. 7/8" RECESSED PULL IRON, GALV.. LOCATE AS FOLLOWS: BOTTOM SECTION (6) CORE MTD.
- 11. 4 TON x 4 3/4" GALV. RISS ANCHOR FOR HANDLING. LOCATE AS FOLLOWS: BOTTOM SECTION (4) CORE MTD.; TOP SECTION (4) CORE MTD., (4) SHELL MTD.; RING SECTION (4) CORE MTD., (4) SHELL MTD.



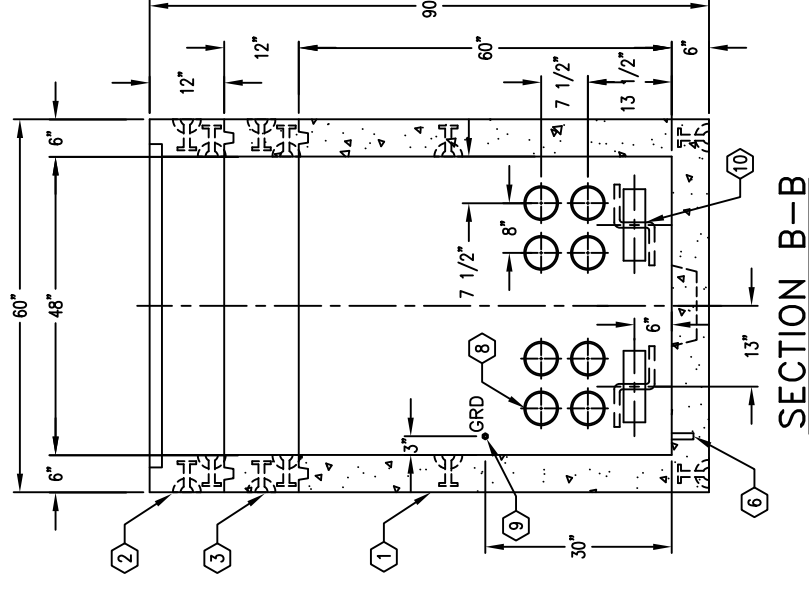
MINIMUM EXCAVATION SIZE:
6'-0" x 8'-10" x DEPTH REQ'D.



PLAN VIEW



SECTION A-A



SECTION B-B

#	DATE	DESCRIPTION	BY