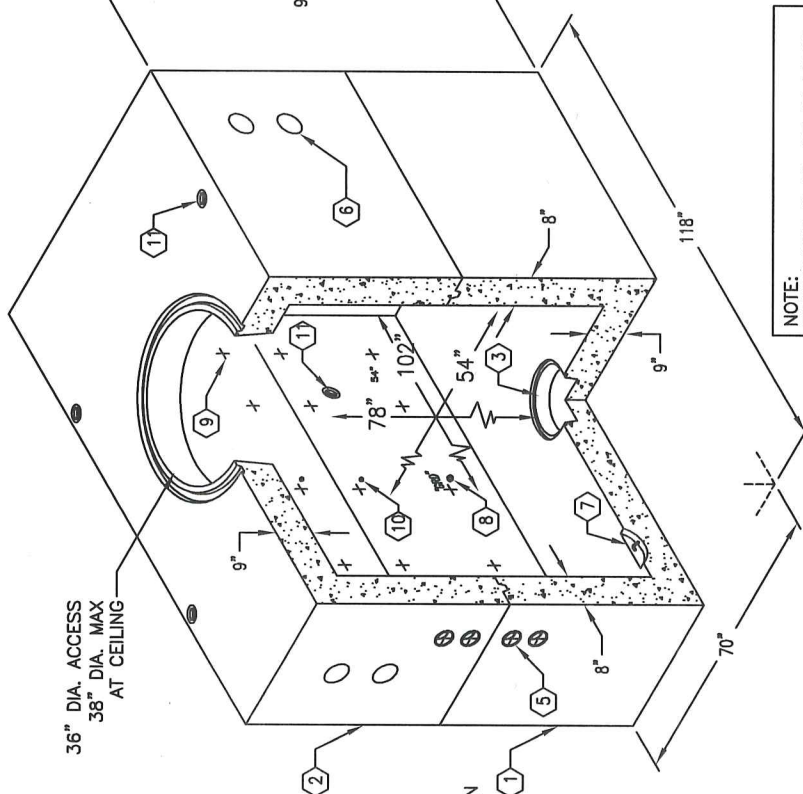


# 4'-6" x 8'-6" FLAT WALL MANHOLE x 6'-6" DEEP

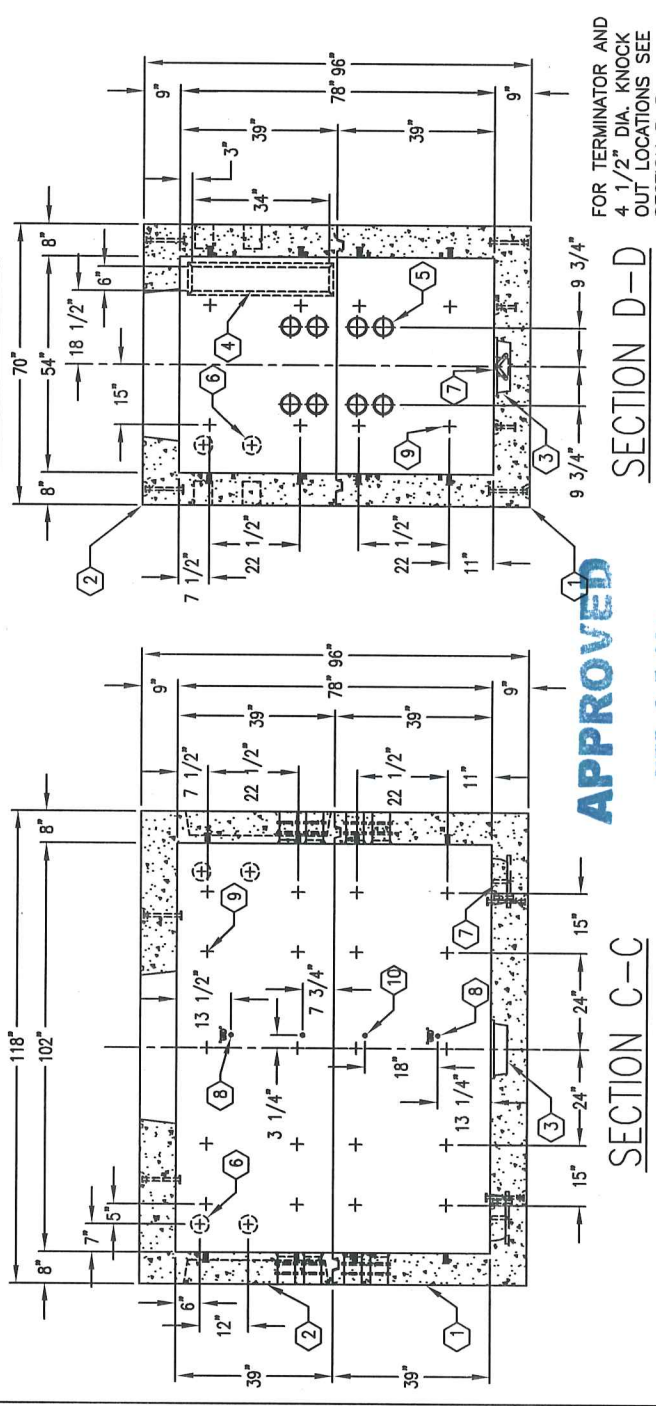
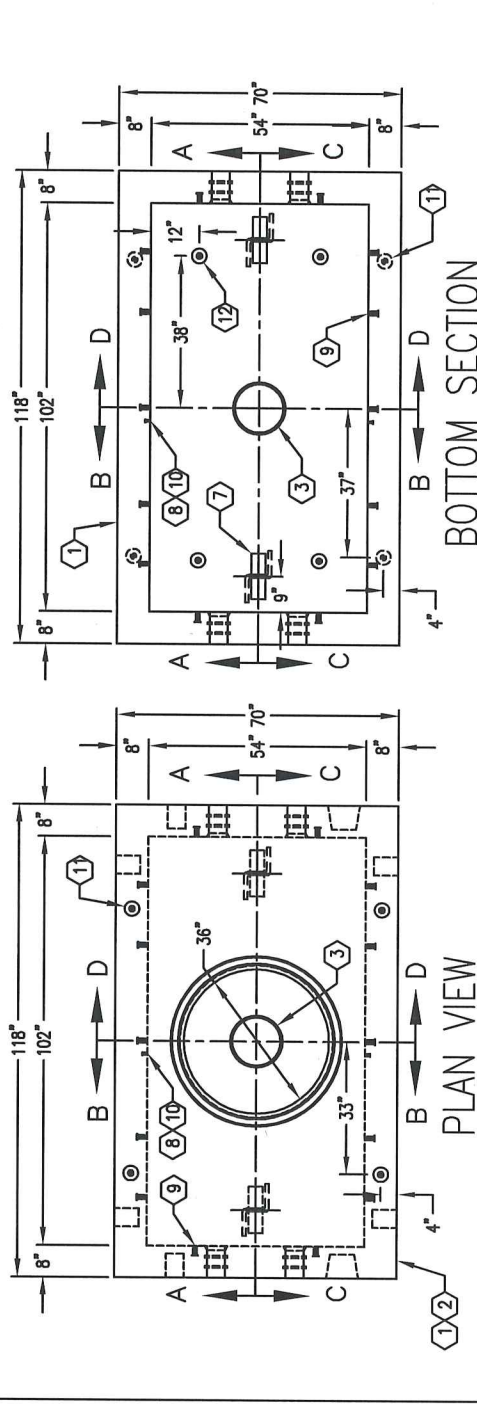
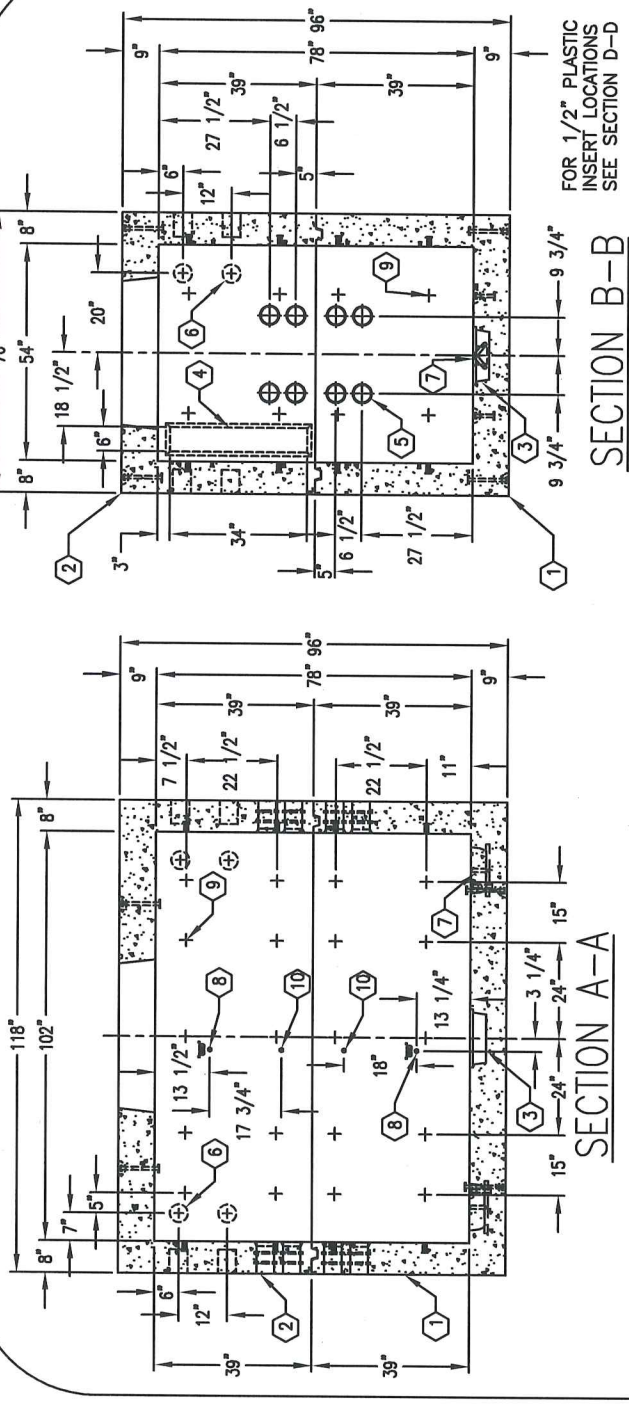
ITEM	PART NO.	DESCRIPTION	CAGE NO./LOCATE	WEIGHT/MOUNT
1	UV4686X-B39-14-LACOLA	39" BOTTOM SECTION	CG-4686X-B39-14-LACOLA	16,005 lbs
2	UV4686X-T39-14-LACOLA	39" TOP SECTION	CG-4686X-T39-14-LACOLA	14,910 lbs
3	KNOCK OUT	12" x 13" DIA. SUMP x 4" DEEP	(1) CORE	
4	KNOCK OUT	6" x 34" K.O. x 6 1/2" DEEP	(2) SHELL	
5	55-30-43	4.35" TERMINATORS (ATT)	(8) CORE	
6	KNOCK OUT	4-1/2" DIA x 5-1/4" DIA x 6 1/2" DEEP KNOCK OUT	(12) SHELL	
7	55-35-03	7/8" DIA. GALV. PULL IRON-RECESSED	(2) CORE	
8	55-10-215	1/4" THREADED BRONZE GROUND INSERT WELD TO REBAR "GRD" SHOULD BE STENCILED IN RED LETTERS	(2) CORE	
9	55-10-424	1/2" PLASTIC INSERT	(28) CORE	
10	55-10-210	1/4" P-15-T WITH 1/4"-20NC x 1" ZINC HEAD BOLT	(2) CORE	
11	55-20-408	4 TON x 9-1/2" GALV. DOGBONE ANCHORS	(4) SURFACE	
12	55-20-404	4 TON x 4-3/4" GALV. DOGBONE ANCHORS	(4) CORE	

### NOTES:

- STANDARDS. AASHTO LRFD BRIDGE DESIGN SPECIFICATIONS, 4TH EDITION, WITH 2010 CALTRANS AMENDMENTS, CITY OF LOS ANGELES BUREAU OF ENGINEERING STANDARD PLAN S-601, LATEST, MANUAL PART H, ASTM C-857. STRUCTURAL CALCS. #33778
- MATERIAL. CONCRETE, F<sub>c</sub>=5,500 PSI. MIX TO INCLUDE FLY ASH. REINFORCEMENT PER ASTM A-706, F<sub>y</sub>=60,000.
- LOADS. VERTICAL LIVE LOAD: AASHTO HL-93. LIVE LOAD SUR-CHARGE: LA BOE PART H, FIGURE H 374.2A, MINIMUM 80 PSF (TO BOTTOM OF VAULT). SOIL LATERAL LOADS: 40 PCF (DRY), 81 PCF (SATURATED), SATURATED SOIL CONDITIONS 3'-0" BELOW GRADE. SOIL BEARING CAPACITY = 1500 PSF. DESIGN SOIL DENSITY IS 120 PCF.
- LOADS NOT INCLUDED. DESIGN DOES NOT INCLUDE COOPER E-80 RAILROAD LOADS OR LATERAL OR SURCHARGE LOADS THAT ARE PRODUCED BY FOOTING OR FOUNDATIONS ADJACENT TO THE STRUCTURE. THIS SUBSTRUCTURE SHALL BE KEPT AT LEAST IN A 1:1 RATIO AWAY FROM ALL FOOTINGS AND FOUNDATIONS, UNLESS THE ENGINEER OF RECORD APPROVES IN WRITING.
- INSTALLATION. VAULT TO BE PLACED ON A MIN. 6" BASE OF CRUSHER RUN FOR EASE OF INSTALLATION AND EVEN LOAD DISTRIBUTION. BASE MATERIAL IN ACCORDANCE WITH SECTION 200-2 OF THE SSPWC (GREEN BOOK).
- INSTALLATION LIMITS. VAULT SHALL HAVE A MINIMUM COVER OF 1'-6" AND A MAXIMUM COVER OF 4'-0".
- EACH CONCRETE SECTION SHALL BE MARKED ON THE INSIDE & OUTSIDE WITH "JENSEN PRECAST", AND THE DATE OF THE POUR.
- NO SHARP OR ROUGH EDGES ON THE TERMINATORS ENTERING THE VAULT
- K36-MN12-09-LACOLA GRADE RINGS, WITH APPROVED CAST IRON COVER TO BE USED WITH THIS VAULT.
- ALL WALLS AND CEILING SHALL BE PAINTED WHITE.
- EACH PIECE TO BE STENCILED WITH ITS PART NO.
- ADDITIONAL SUBMITTAL, PERMIT AND CONSTRUCTION PLAN REVIEW WILL BE REQUIRED FOR EACH PROJECT LOCATION. SUBMIT TO CITY ENGINEER FOR APPROVAL PRIOR TO START OF ANY CONSTRUCTION.
- ALL INSTALLATIONS SHALL COMPLY WITH ALL OTHER LOCAL GOVERNING CODES AND REGULATIONS INCLUDING CALIFORNIA PUBLIC UTILITIES COMMISSION REGULATIONS.



NOTE:  
EXCAVATION IS TO BE AT LEAST 6'-10" WIDE, 10'-0" LONG AND OVER-EXCAVATED AT LEAST 6".  
SEE NOTES.



FOR 1/2" PLASTIC INSERT LOCATIONS SEE SECTION D-D

**APPROVED**

FEB 25 2016

W.P.M.

**JENSEN PRECAST**

STOCKPILE - JENSEN PRECAST  
CITY OF LOS ANGELES INSPECTION  
REQUIRED WO# C0034604

**JENSEN PRECAST**  
AUTOCAD REL. 2008

K4686X-FM78-14-LACOLA  
FOR AT&T  
06-25-14

K4686X-FM78-14-LACOLA  
FOR AT&T  
06-25-14

#	DATE	DESCRIPTION	BY
1	02-24-16	RESUB TO PRODUCTION	ED
2	02-18-16	REV JOINT PER PROD DUE TO SWITCH IN STEEL FORMS	ED