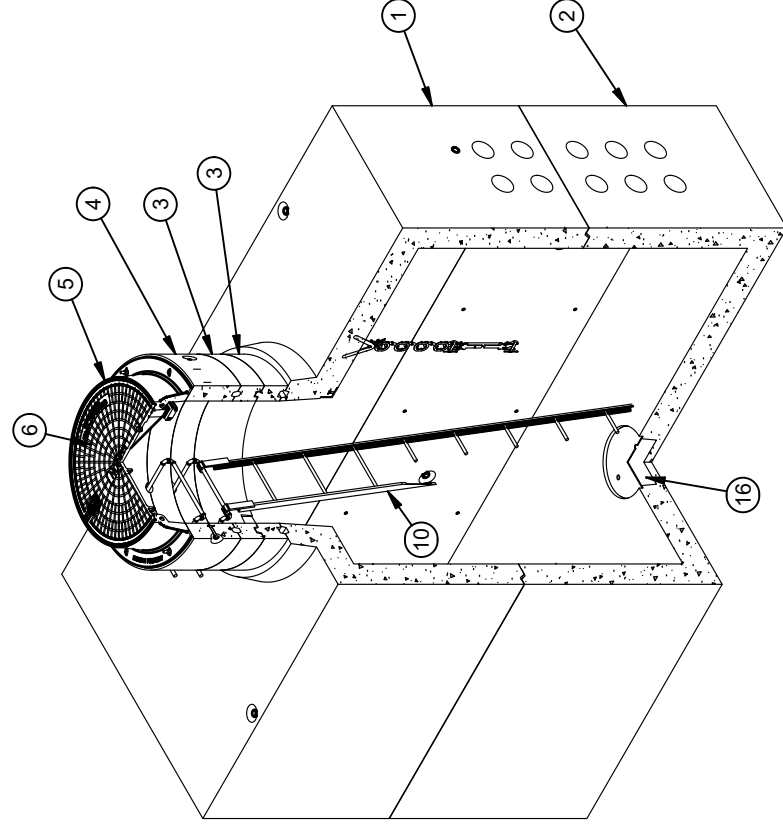


**DESIGN NOTES**

- DESIGNED IN ACCORDANCE WITH C-857 LOADING USING 5,500 PSI COMPRESSIVE STRENGTH CONCRETE AND 60,000 PSI YIELD STRENGTH ASTM A-706 STEEL REINFORCEMENT PER CALCS. #31036
- LIMIT OF COVER OVER ROOF SECTION IS 1'-6" TO 4'-0".
- MINIMUM EXCAVATION SIZE: 7'-0" X 12'-6" DEPTH REQ'D.
- FOR COMPLETE DESIGN AND PRODUCT INFORMATION CONTACT JENSEN PRECAST.
- COVER DESIGN FOR TRAFFIC LOADING.
- VAULT TO BE PLACED ON A MIN. 6" BASE OF CRUSHER RUN FOR EASE OF INSTALLATION AND EVEN LOAD DISTRIBUTION.
- CONCRETE MIX USED IN POURING THIS PRODUCT SHALL USE FLY ASH AS AN ADMIXTURE.
- FINISH COATING: ALL INTERIOR WALLS AND CEILING SHALL BE PAINTED WHITE.
- ALL PARTS TO BE STENCILED: MFG DATE / JOB NUMBER / PRODUCT ID / WEIGHT.

**BILL OF MATERIALS**

ITEM	UNIT QTY	QTY	PART NUMBER	DESCRIPTION
1	1	1	100009379	Vault 60126x42 Rect. Top Section 36 EDISON UGS MH 310
2	1	1	200019213	Vault 60126x42 Rect. Bottom Section Flat EDISON UGS SS590
3	1	2	100012117	Grade Ring D3645x6
4	1	1	100012643	Grade Ring D3645x12 Flat with Inserts
5	1	1	100009392	CI RING 30DIAx8IN NEENAH SWIVELOC NF-01502001
6	1	1	100009389	CI CVR 30DIA NEENAH SWIVELOC ASTM A49 CL35B LH SO CAL EDISON NF-01505030
7	1	2	100013515	CHAIN 1/2 7-1/2FT GR-30 (FIELD CUT)
8	1	2	100009367	SHACKLE 5/8IN W/3/4 COTTER PIN GALV
9	1	2	100009368	TURNBUCKLE CLEVIS-TO-CLEVIS 3/4 THREADED GALV
10	1	1	100009254	LADDER HOOKED GALV 9FT ED/LA 13382
11	1	2	100002564	LADDER STEP RUNG 12B31 TYPE 1 MH KNURLED GALV 3/4X16
12	1	4	100009758	STUD BOLT 1/2X8 UNC LEVELING PLAIN
13	1	8	100007007	HEX NUT 1/2-13 UNC HEAVY GALV
14	1	8	100002657	WASHER FLAT 1/2 REGULAR TYPE A RAW
15	1	1	100008122	PLUG PICKHOLE NEOPRENE RUBBER CI COVER ED/LA
16	1	1	100006783	SUMP COVER FOR 13"SUMP(15"OD)GALV DIA PLATE
17	1	4	100022758	GROUND ANCHOR BRACKET KIT HALO HB304R
18	1	4	100004320	BOLT HEX 1/2-13 UNC 1 304SS
19	2,000 gal	2,000 gal	100006420	COATING PAINT LATEX WHITE
20	1,000 ul	1,000 ul	100005749	SEALANT JOINT BUTYL RUBBER ASTM C-990 AND M198 CS-102 1IN EQUIV X14.5FT PER BOX 118FT
21	1	1	100007108	GASKET 3/8 DIA NEOPRENE ONE PIECE



**ISOMETRIC VIEW**


REVISION HISTORY	
REV	DESCRIPTION
B	UPDATE BOM
DATE	6/2/2020
APPROVED	

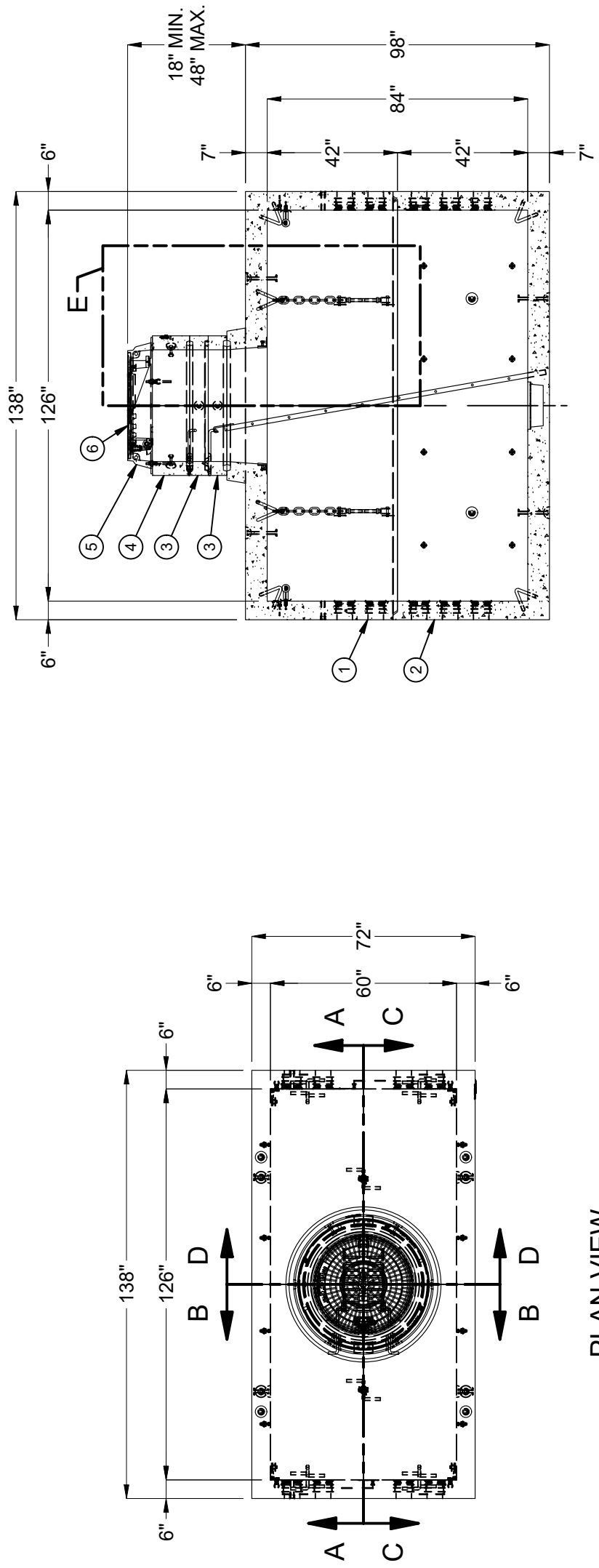
DESCRIPTION:	Utility Vault 60126 Layout Assembly EDISON UGS MH 310
PART NUMBER:	100010483
DRAWN BY:	D.Mejia
CREATED:	5/24/2019
MODIFIED:	6/2/2020

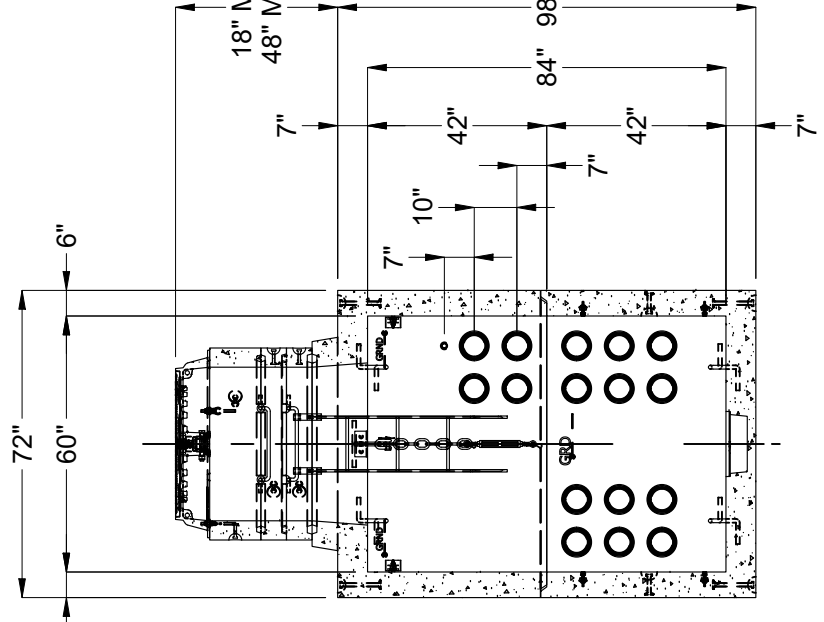
REV:	B
SHEET:	82
1 OF 2	

 <a href="http://WWW.JENSENPRECAST.COM">WWW.JENSENPRECAST.COM</a>		<p>©2019 Jensen Precast. All rights reserved. All materials appearing as Jensen Precast documents and the like are proprietary work product and are protected under U.S. copyright and other laws. Unless in conjunction with business conducted with Jensen Precast, any use of Jensen Precast work product without express, written consent is prohibited, and recipient is prohibited from distributing any and all work product to non-approved third parties under penalty of civil action.</p>
<p><b>LIFTING NOTES</b></p> <p>FIELD INSTALLATION: PLANT DEMOLING: MINIMUM HANDLING CONCRETE STRENGTH F<sub>c</sub> = 5500 PSI RIGGING EQUALIZER REQUIRED TO EQUALIZE LOAD TO 4 LIFTING POINTS WITH A SLING ANGLE BETWEEN 60° AND 90°</p>		
BURY DEPTH:	0.0' - 4.0' to Top of Section	
WATER LEVEL:	3.0'	WEIGHT: 30552.31 Lbs
DESIGN SPEC:	ASTM C857, ACI 318	LOADING SPEC: A-16 (AASHTO HS20-44)
AGENCY:	EDISON	AGENCY SPEC: UGS MH 310

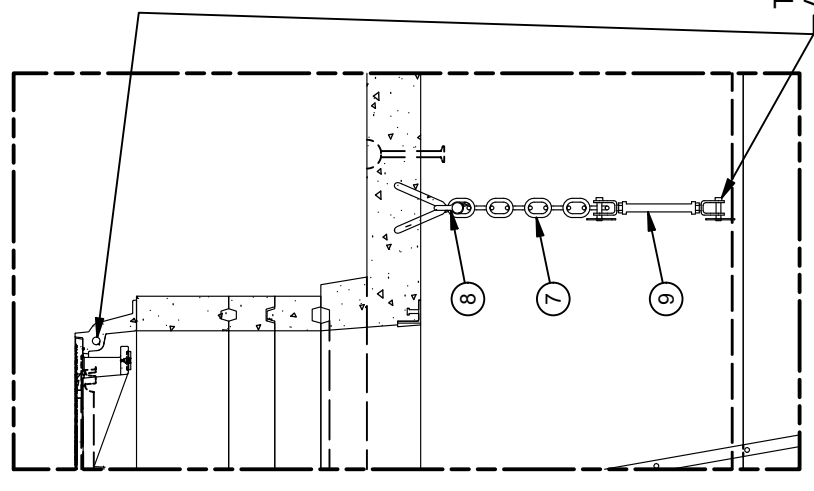
10010483.dwg



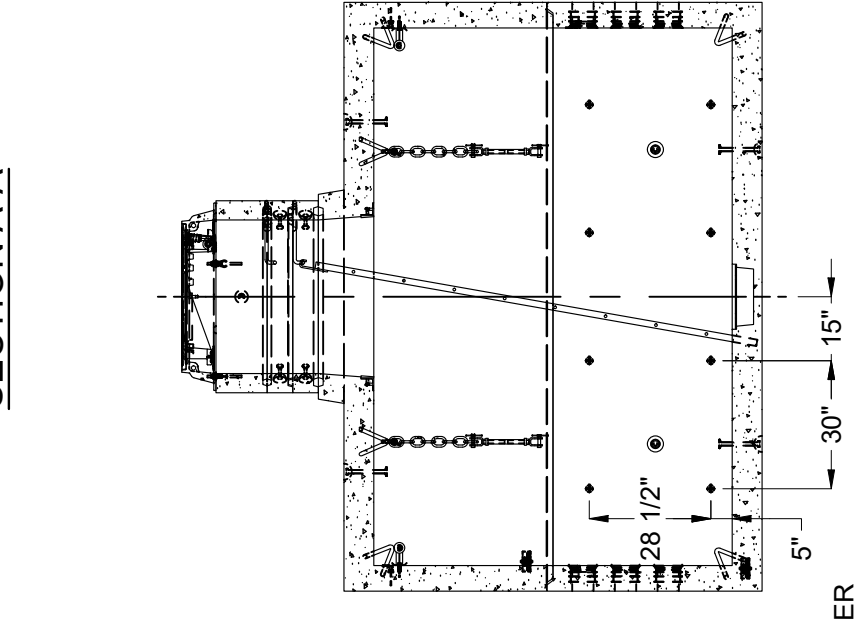
PLAN VIEW



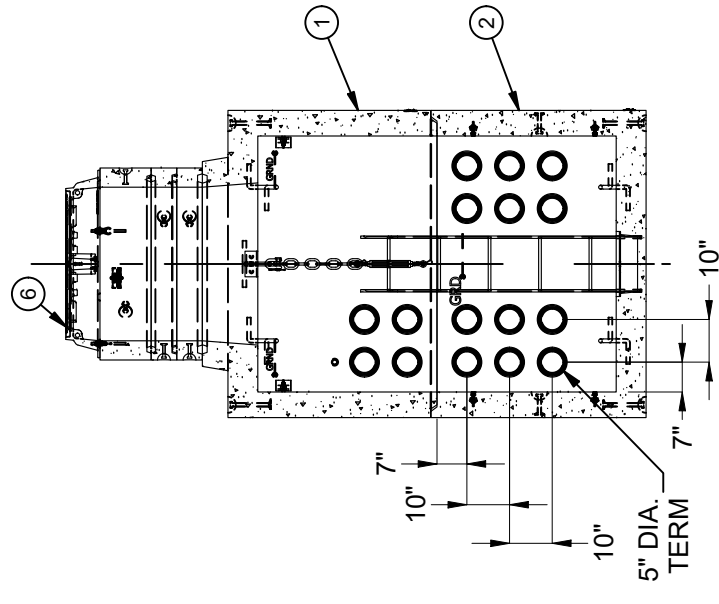
SECTION B-B



DETAIL E



SECTION C-C



SECTION D-D

BURY DEPTH:	0.0' - 4.0' to Top of Section		
WATER LEVEL:	3.0'	WEIGHT:	30552.31 Lbs
DESIGN SPEC:	ASTM C857, ACI 318	LOADING SPEC:	A-16 (AASHTO HS20-44)
AGENCY:	EDISON	AGENCY SPEC:	UGS MH 310

**JENSEN PRECAST** EST. 1968  
[WWW.JENSENPRECAST.COM](http://WWW.JENSENPRECAST.COM)

©2019 Jensen Precast. All rights reserved. All materials appearing as Jensen Precast documents and the like are proprietary work product and are protected under U.S. copyright and other laws. Unless in conjunction with business conducted with Jensen Precast, any use of Jensen Precast work product without express, written consent is prohibited, and recipient is prohibited from distributing any and all work product to non-approved third parties under penalty of civil action.

DESCRIPTION:	Utility Vault 60126 Layout Assembly EDISON UGS MH 310		
PART NUMBER:	100010483	LAYOUT DRAWING	DRAWN BY: D.Mejia
CREATED:	5/24/2019	MODIFIED:	6/2/2020
REV:	B	SHEET:	83
			2 OF 2