

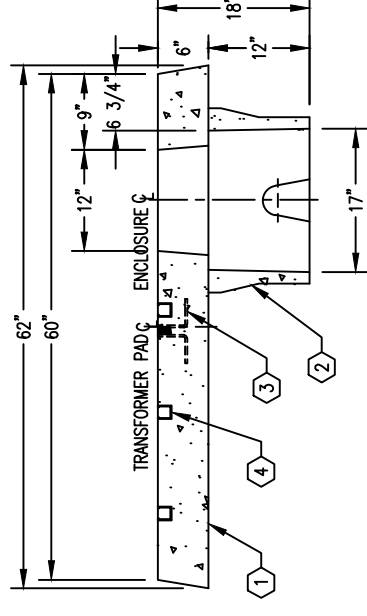
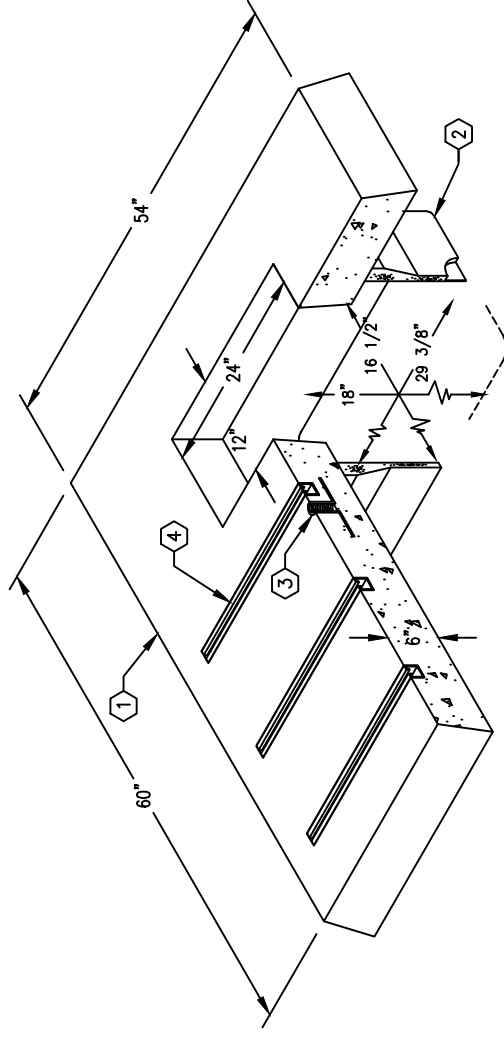
4'-6" x 5'-0" x 6" THICK TRANSFORMER PAD W/17" x 30" x 18" DEEP ENCLOSURE

MATERIAL LIST					
ITEM	PART No.	DESCRIPTION	CAGE/LOCATE	WT/MOUNT	CU FT.
1	PD5460-T6-12	6" TRANSFORMER PAD	CG-PD5460-T6-12	1,600 lbs	10.65
2	HN1730-B	17" x 30" x 12" PULL BOX		175 lbs	11.7
3	55-10-830	1" DIA. COIL THRD INSERT	TRANSFORMER PAD	(1) PAN	
4	55-21-052	1 5/8" x 5/8" x 52" LONG, 12 GAUGE UNISTRUT P3200 SERIES	TRANSFORMER PAD	(3) PAN	

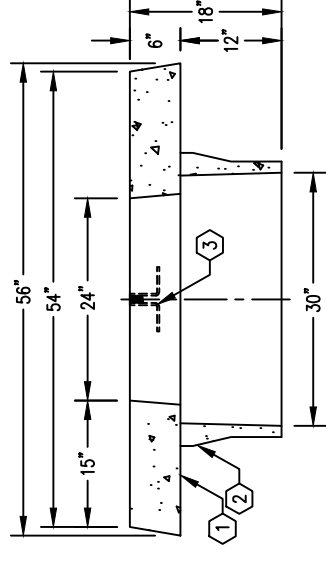
NOTES:

- PAD DESIGNED IN ACCORDANCE WITH ACI 318 MINIMUM REINFORCEMENT USING 5,500 PSI CONCRETE AND 60,000 PSI ASTM A-706 STEEL REINFORCEMENT PER CALC #33934.
- TRANSFORMER PAD DESIGNED FOR: DEAD LOAD = 600 PLF, TRANSFORMER LOAD POINTS AS SHOWN ON UB721-33 LIVE LOAD = 100 PSF
- VAULT TO BE PLACED ON A MIN. 6" COMPACTED CRUSHED ROCK 1", GRADE A OR CONCRETE AGGREGATE NO. 3, GRADE B (SSPWC, SUBSECTIONS 200-1.2 & 200-1.4) FOR EASE OF INSTALLATION AND EVEN LOAD DISTRIBUTION.
- CONCRETE MIX USED IN POURING THE TRANSFORMER PAD SHALL USE FLY ASH AND DCI AS AN ADMIXTURE.
- EACH CONCRETE SECTION SHALL BE MARKED ON THE INSIDE & OUTSIDE WITH "JENSEN PRECAST", THE DESIGNATION "DWP/FA-CN" or "DWP/F-CN-SC" IF SCC MIX USED, AND THE DATE OF POUR.
- EACH CONCRETE SECTION SHALL HAVE CAST-IN ON THE INSIDE "JENSEN", THE YEAR, AND THE DESIGNATION "FA-CN", or "F-CN-SC" IF SCC MIX USED.

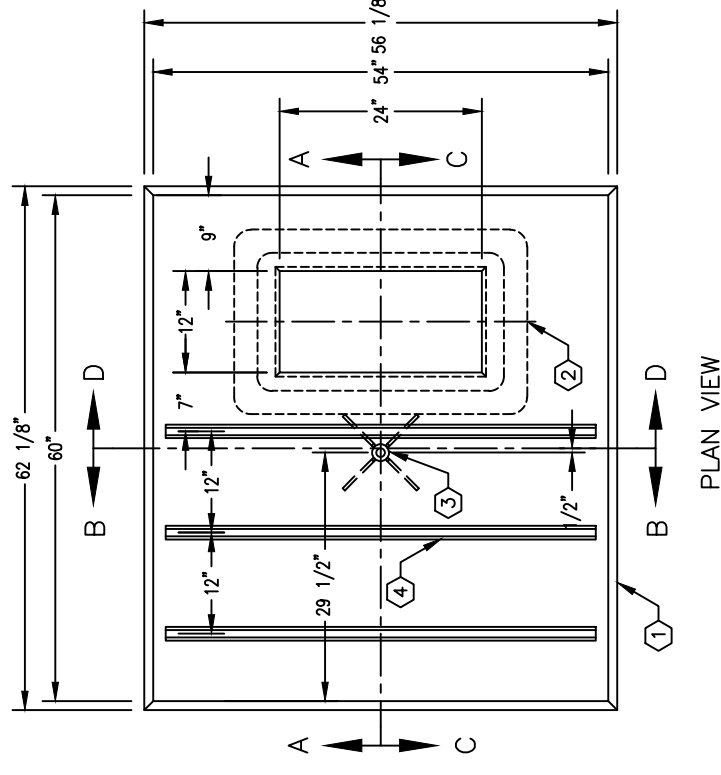
MINIMUM EXCAVATION SIZE:
2'-8" x 3'-6" x DEPTH REQ'D.



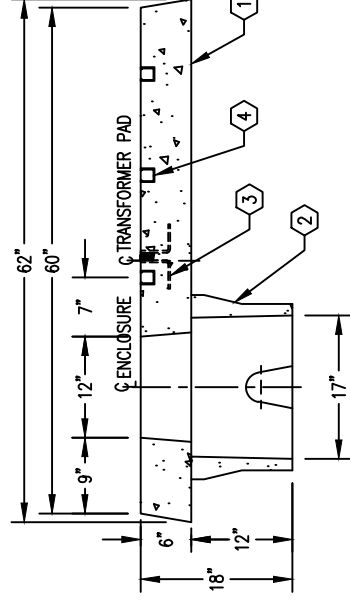
SECTION A-A



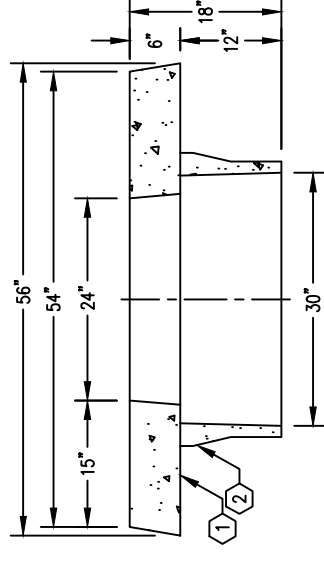
SECTION B-B



PLAN VIEW



SECTION C-C



SECTION D-D

#	DATE	DESCRIPTION	BY
E	07-09-15	REVISED SCALE OF DRAWING	SMG
D	6-16-15	REVISED ITEM 2 PT NO., WT AND NOTE	EO