

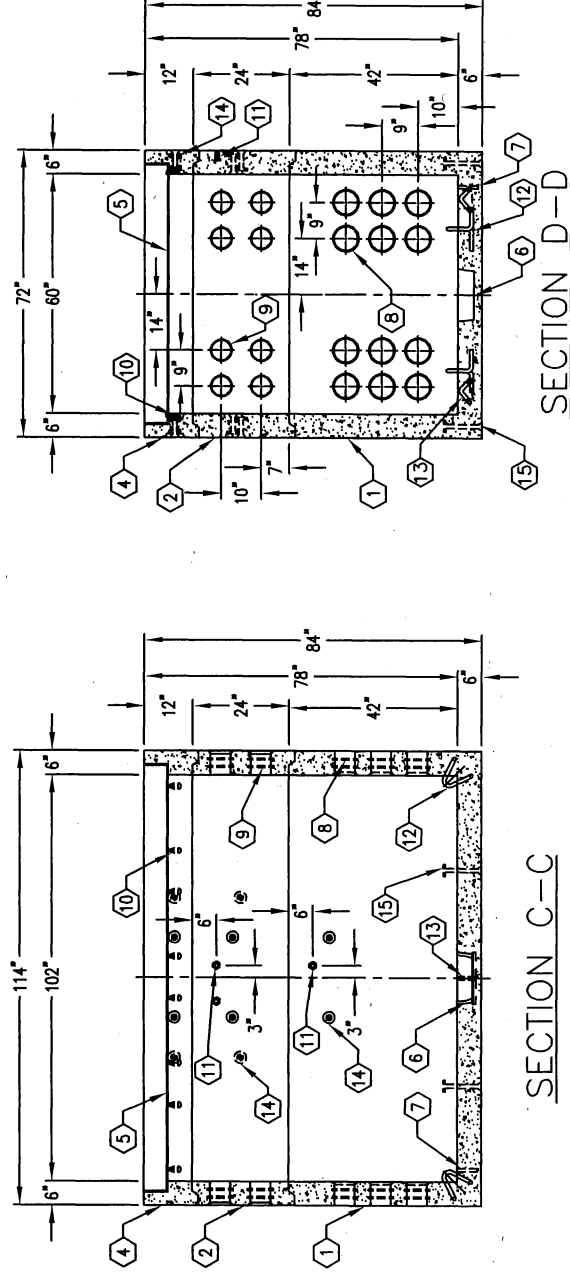
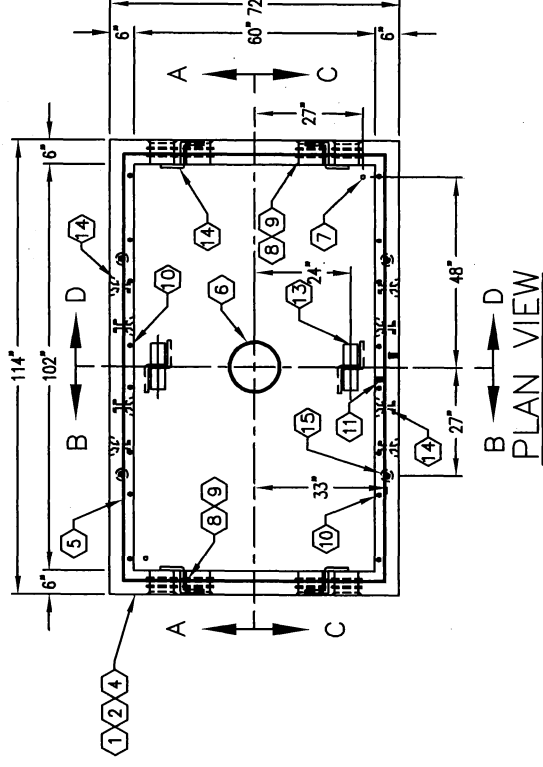
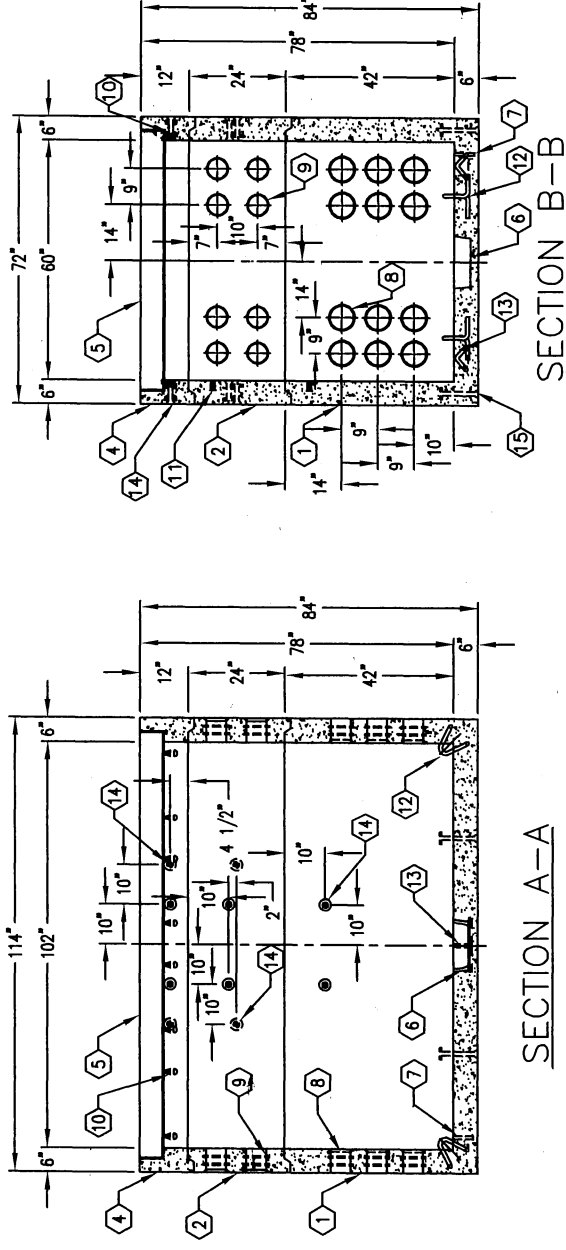
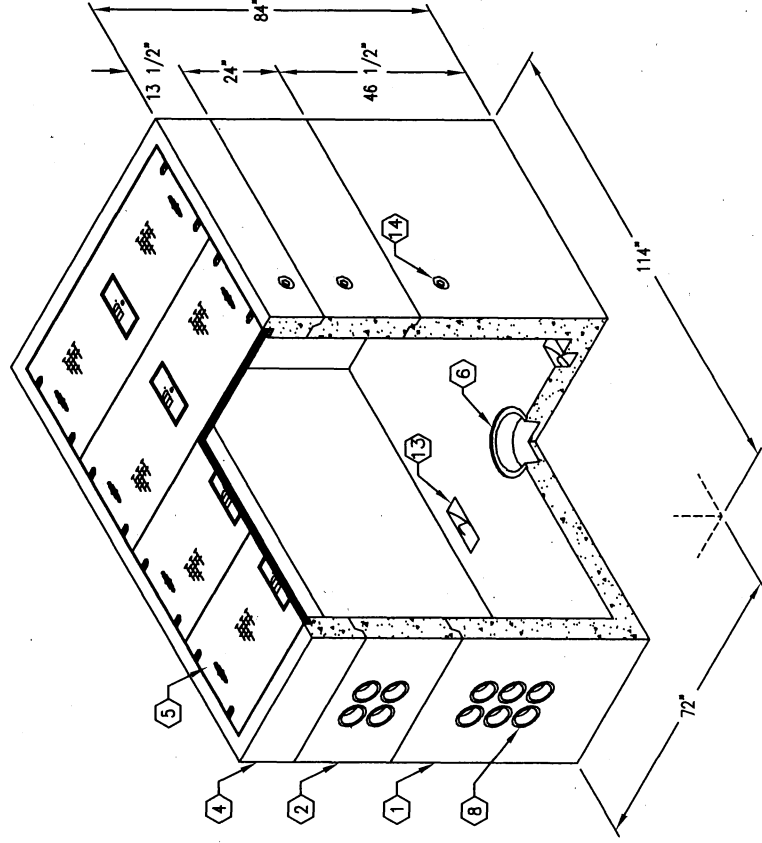
5'-0" x 8'-6" x 8'-6" x 6'-6" DEEP PARKWAY LARGE MANHOLE

ITEM #	PART NO.	DESCRIPTION	CAGE / LOCATION	WEIGHT / MOUNT
1	PB-586-B42-25	42" BOTTOM SECTION	CG-586-B42-25	11,900 lbs., 2.94 C.Y.
2	PB-586-R24-25	24" RISER SECTION	CG-586-R24-25	4,400 lbs., 1.07 C.Y.
3	PB-586-R12	12" RISER SECTION, (NOT SHOWN - AVAILABLE ON SPECIAL ORDER)	CG-586-R12	2,200 lbs., 0.54 C.Y.
4	PB-586-TR12-25	12" TOP RING SECTION W/ FRAME (F586-PB-RPM) CAST-IN	CG-586-TR12-25	2,200 lbs., 0.54 C.Y.
5	12-20-52	26 3/16" x 64 5/8" RPM COVER, W/ LIFT HANDLES, MARK EACH COVER I.I.D.	TOP RING SECTION	(4) REQ'D, 200 lbs.
6	20-10-419	BOLT, 1/2"x2 1/2" PENT HD W/CAPWASH	BOTTOM SECTION	(16) REQ'D
7	KNCKOUT	12" x 13" DIA. SUMP x 4" DEEP	BOTTOM SECTION	(1) CORE
8	55-30-61	1" DIA. GROUND ROD KNOCK OUT.	BOTTOM SECTION	(2) CORE
9	55-30-52	6" TERMS	BOTTOM SECTION	(24) SHELL
10	55-10-416	5" TERMS	RISER SECTION	(16) SHELL
11	55-10-423	1/2" DIA. x 1 1/2" NC P35T OPEN BTM INSERT W/ CLEAN OUT HOLE	TOP RING SECTION	(16) REQ'D
12	55-35-06	1/2" BRASS W/STEEL ROD INSERT	BOTTOM SECTION	(1) CORE
13	55-35-03	PULL IRON, 7/8" x 6" GALV., VERT.	RISER SECTION	(1) CORE, (1) SHELL
14	55-20-404	7/8" DIA. x 3-3/8" GALV. RECESSED PULL IRON	BOTTOM SECTION	(4) CORE
15	55-20-409	4 TON x 4 3/4" GALV. DOGBONE ANCHORS FOR HANDLING	BOTTOM SECTION	(2) CORE
16	55-20-409	4 TON x 9 1/2" GALV. DOGBONE ANCHORS FOR HANDLING	BOTTOM SECTION	(4) CORE, (4) SHELL
17	55-20-409	4 TON x 9 1/2" GALV. DOGBONE ANCHORS FOR HANDLING	TOP RING SECTION	(4) CORE, (4) SHELL
18	55-20-409	4 TON x 9 1/2" GALV. DOGBONE ANCHORS FOR HANDLING	BOTTOM SECTION	(4) SURFACE

NOTES:

- CONCRETE DESIGNED PER ASTM C-857 LOAD DESIGNATION A-16 (ASHTO HS-20-44) TRAFFIC LOADING, USING 5,500 PSI CONCRETE AND ASTM A-706 GR.60 STEEL REINFORCEMENT PER CALCS. #30381.
- COVER DESIGNED FOR PARKWAY (300 psf) LOADING.
- MANHOLE TO BE PLACED ON A MIN. 6" BASE OF CRUSHER RUN, FOR EASE OF INSTALLATION AND EVEN LOAD DISTRIBUTION.
- STRUCTURES TO BE STENCILED, "JENSEN PRECAST".
- 7/8" X 1 3/4" CONSEAL GASKET (90 FT. REQ'D) WILL BE SHIPPED WITH EACH VAULT.

MINIMUM EXCAVATION SIZE:
7'-0" x 10'-6" x DEPTH REQ'D.



DATE	DRAWN BY	CHECKED BY		
#	DATE	REVISION	BY	CHK
C	03-17-17	FIXED INSERTS CALL OUTS	DF	
B	08-21-07	ADDED VERTICAL PULL IRONS	JK	

JENSEN
PRECAST

K586-FH78-25

PER I.L.D. 556 REV/01 11-9-00