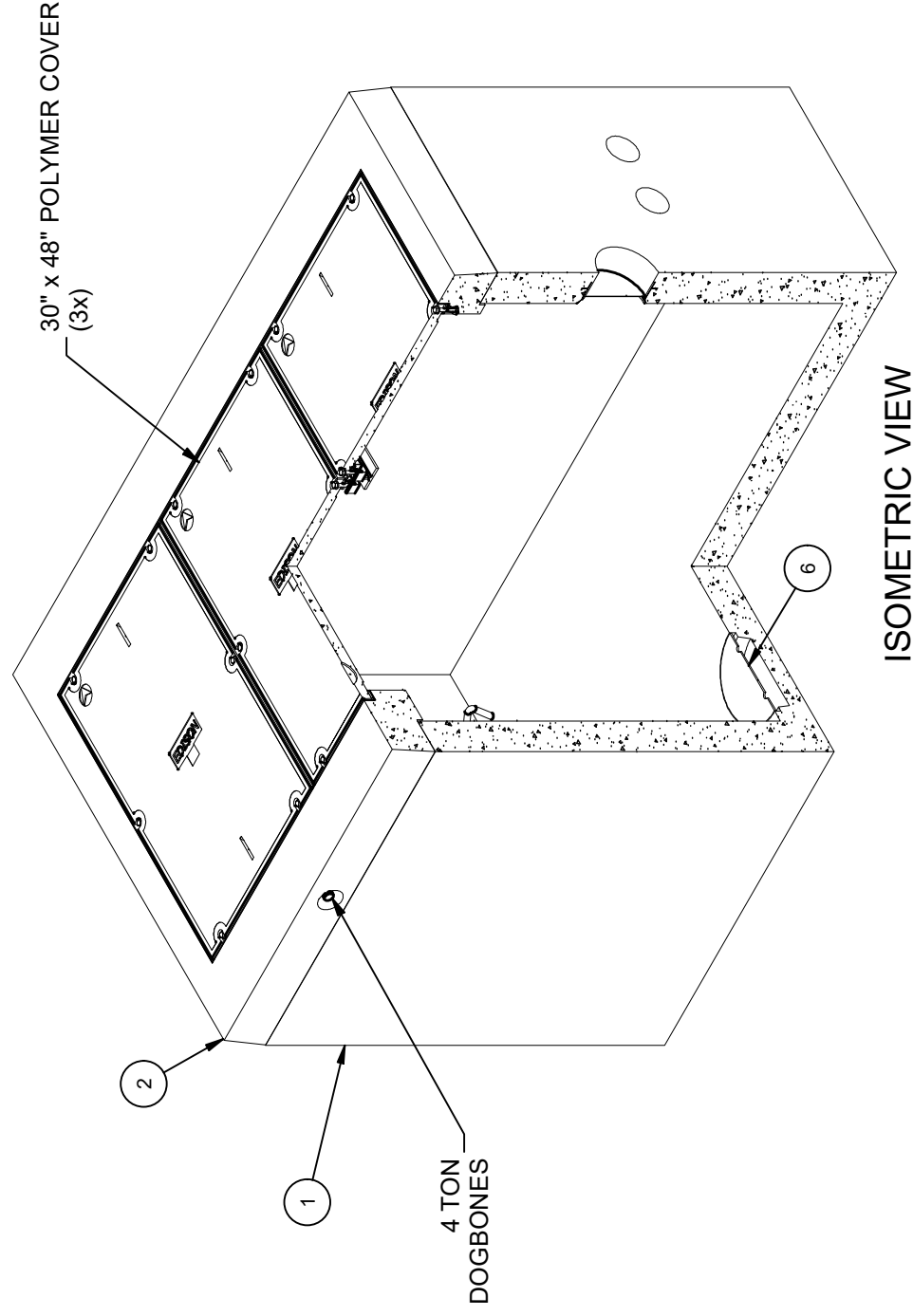


BILL OF MATERIALS					MASS (lbs)
ITEM	UNIT QTY	QTY	PART NUMBER	DESCRIPTION	
1	1	1	100009554	Vault 60102x61 Rect. Bottom Section Terminators Sump EDISON UGS SS568, SS-21	15069
2	1	1	100010095	Vault 60102x8 Slab Top 98"x48"C EDISON UGS SS568, SS-21	2845
3	1	4	100022758	GROUND ANCHOR BRACKET KIT HALO HB304R	2
4	1	4	100007767	WASHER FLAT 1/2 REGULAR 1.25 OD 304SS	
5	1	4	100004320	BOLT HEX 1/2-13 UNC 1 304SS	
6	1	1	100006783	SUMP COVER FOR 13"SUMP(15"OD)GALV DIA PLATE	12
7	1,000 gal	1,000 gal	100006420	COATING PAINT LATEX WHITE	
8	1,000 ul	1,000 ul	100005749	SEALANT JOINT BUTYL RUBBER ASTM C-990 AND M198 CS-102 1IN EQUIV X14.5FT PER BOX 118FT	

**DESIGN NOTES**

- DESIGNED IN ACCORDANCE WITH AASHTO HS20-44 TRAFFIC BRIDGE LOADING USING 5,500 PSI COMPRESSIVE STRENGTH CONCRETE AND 60,000 PSI YIELD STRENGTH ASTM A-706 STEEL REINFORCEMENT PER CALCS.#34867.
- MINIMUM EXCAVATION SIZE: 7'-0" X 10'-6" X DEPTH REQ'D.
- FOR COMPLETE DESIGN AND PRODUCT INFORMATION CONTACT JENSEN PRECAST.
- COVER DESIGN FOR PARKWAY 300 PSF LOADING
- VAULT TO BE PLACED ON A MIN. 6" BASE OF CRUSHER RUN FOR EASE OF INSTALLATION AND EVEN LOAD DISTRIBUTION.
- FINISH COATING: ALL INTERIOR WALLS AND CEILING SHALL BE PAINTED WHITE.
- ALL PARTS TO BE STENCILED: MFG DATE / JOB NUMBER / PRODUCT ID / WEIGHT.
- STENCIL "GRD" IN RED LETTERS
- THE EPDM GASKET SHALL BE GLUED IN PLACE USING 3M SCOTCH-GRIP BRAND #497, RUBBER AND GASKET ADHESIVE. THE GASKET MATERIAL SHALL BE EPDM MATERIAL, 50 SHORE FROM RESEARCH & DEVELOPMENT CO., PART NO. MBE-03-MOD. GASKET AND FRAME SHALL BE CLEANED PRIOR TO APPLICATION OF THE ADHESIVE. ADHESIVE SHALL BE APPLIED TO GASKET AND FRAME.



**LIFTING NOTES**

- FIELD INSTALLATION: PLANT DEMOLDING: MINIMUM HANDLING CONCRETE STRENGTH F<sub>c</sub> = 5500 PSI RIGGING EQUALIZER REQUIRED TO EQUALIZE LOAD TO 4 LIFTING POINTS WITH A SLING ANGLE BETWEEN 60° AND 90°

BURY DEPTH:	0.0' - 0.0' to Top
WATER LEVEL:	3.0'
DESIGN SPEC:	ASTM C857, ACI 318
AGENCY:	EDISON
APPROX. WEIGHT:	17010.97 Lbs
LOADING SPEC:	A-16 (AASHTO HS20-44)
AGENCY SPEC:	UGS SS568, SS-21



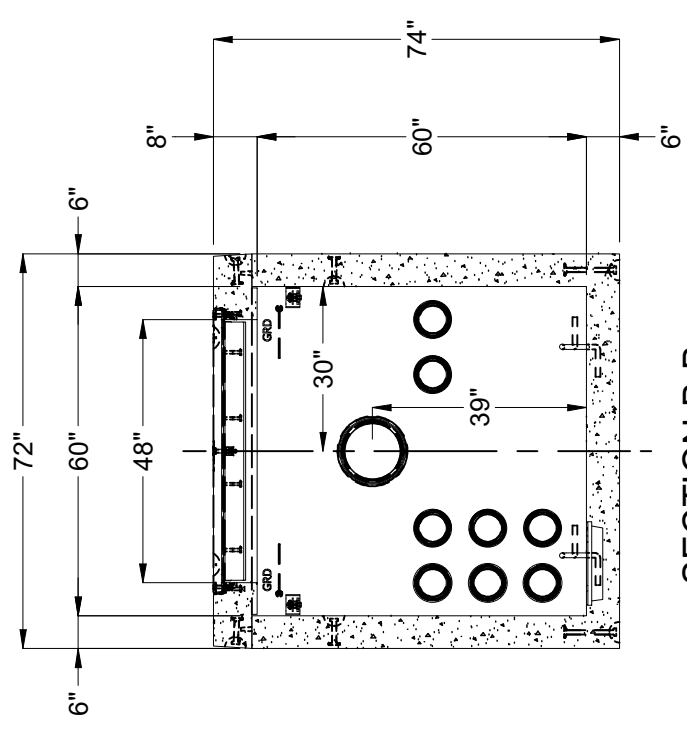
©2022 Jensen Precast. All rights reserved. All materials appearing as Jensen Precast documents and the like are proprietary work product and are protected under U.S. copyright and other laws. Unless in conjunction with business conducted with Jensen Precast, any use of Jensen Precast work product without express, written consent is prohibited, and recipient is prohibited from distributing any and all work product to non-approved third parties under penalty of civil action.

REVISION HISTORY		
REV	DESCRIPTION	DATE
B-4	RELEASED IN INVENTOR	12/7/2022
APPROVED		

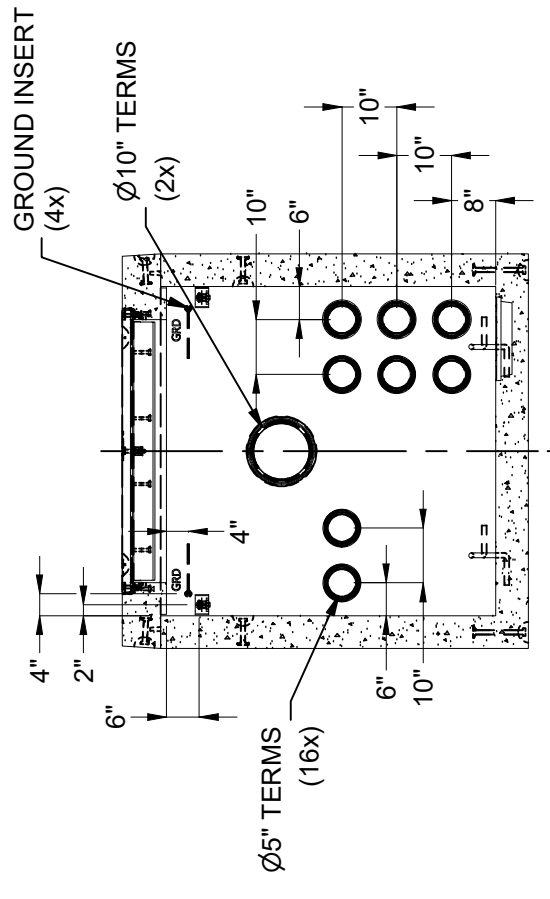
  

DESCRIPTION:	Vault 60102 Layout Assembly EDISON UGS SS568, SS-21
PART NUMBER:	100010514
CREATED:	11/10/2022
DRAWN BY:	D. Mejia
MODIFIED:	12/7/2022
REV:	B-5
SHEET:	80
	1 OF 2

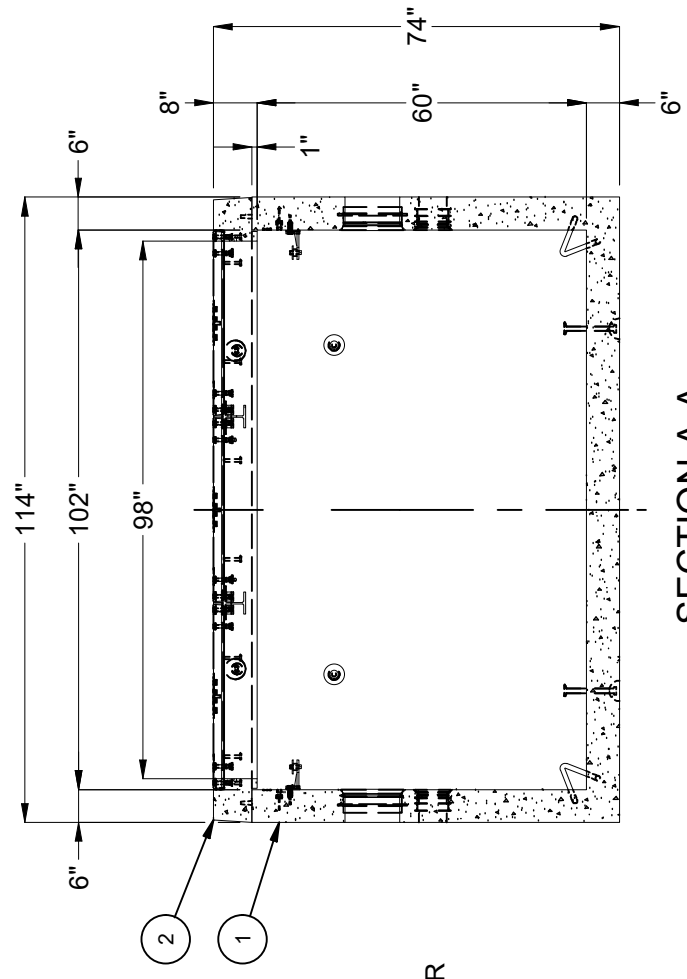
100010514.rvt



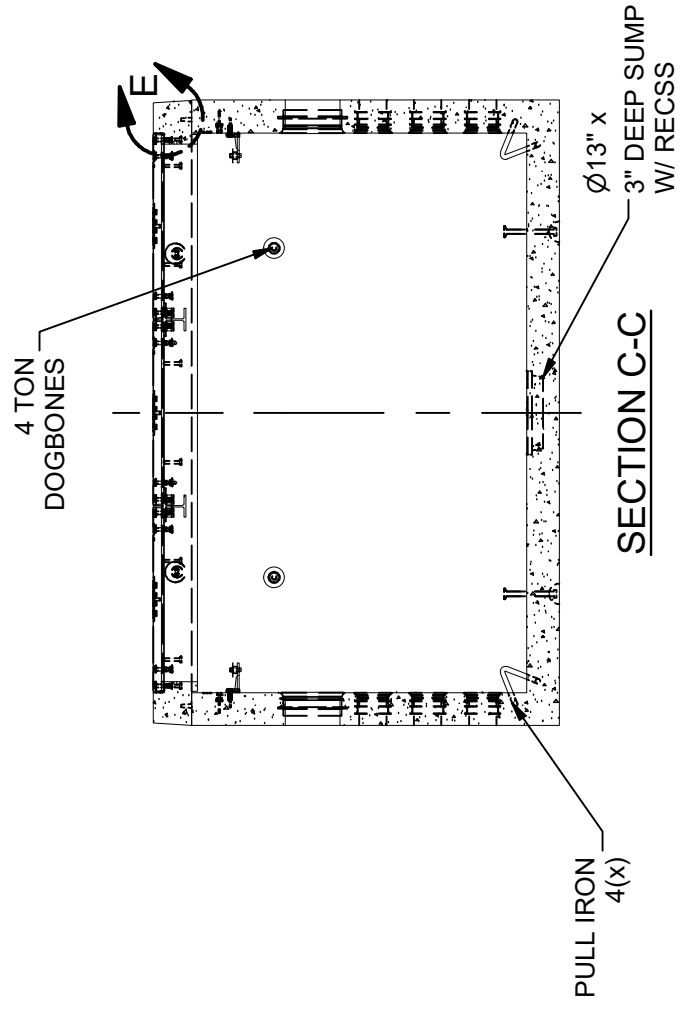
**SECTION B-B**



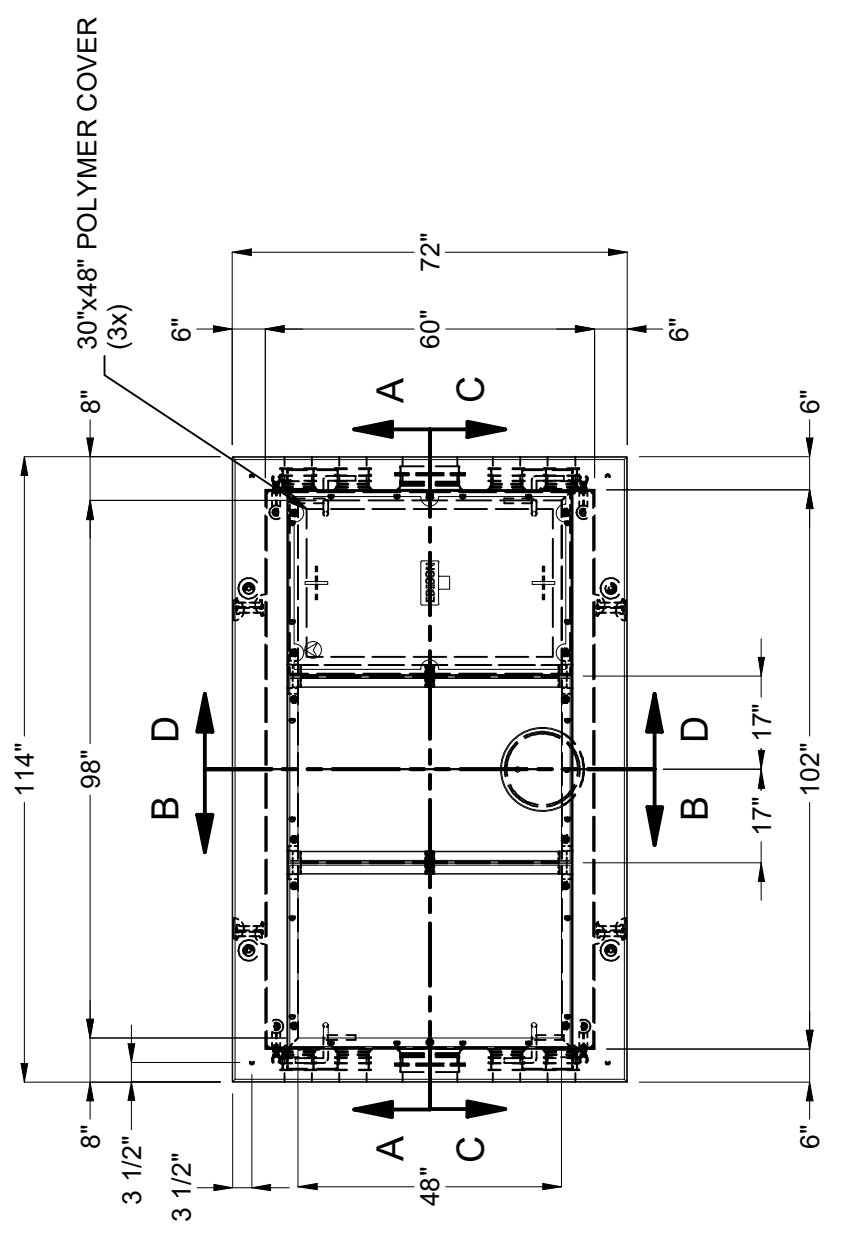
**SECTION D-D**



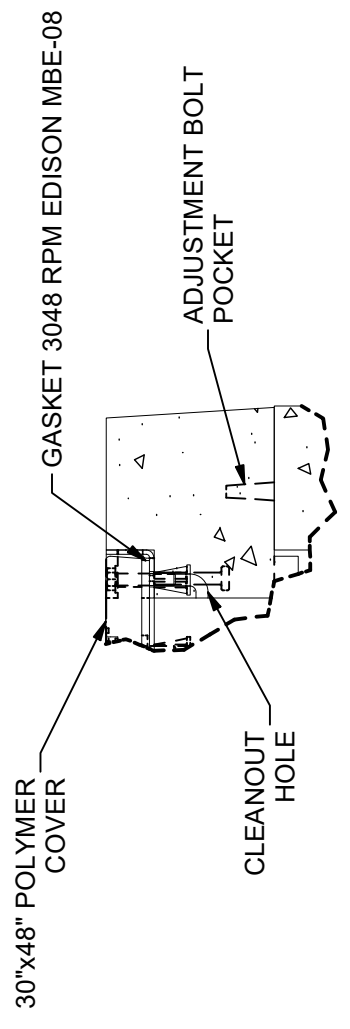
**SECTION A-A**



**SECTION C-C**



**PLAN VIEW**



**DETAIL E**

BURY DEPTH:	0.0' - 0.0' to Top	DESCRIPTION:	Vault 60102 Layout Assembly EDISON UGS SS568, SS-21	REV:	B-5
WATER LEVEL:	3.0'	APPROX. WEIGHT:	17010.97 Lbs	LAYOUT DRAWING	SHEET: 81
DESIGN SPEC:	ASTM C857, ACI 318	LOADING SPEC:	A-16 (AASHTO HS20-44)	DRAWN BY:	D. Mejia
AGENCY:	EDISON	AGENCY SPEC:	UGS SS568, SS-21	MODIFIED:	11/10/2022
			CREATED:	11/10/2022	2 OF 2
			PART NUMBER:	100010514	
			WWW.JENSENPRECAST.COM		

©2022 Jensen Precast. All rights reserved. All materials appearing as Jensen Precast documents and the like are proprietary work product and are protected under U.S. copyright and other laws. Unless in conjunction with business conducted with Jensen Precast, any use of Jensen Precast work product without express, written consent is prohibited, and recipient is prohibited from distributing any and all work product to non-approved third parties under penalty of civil action.