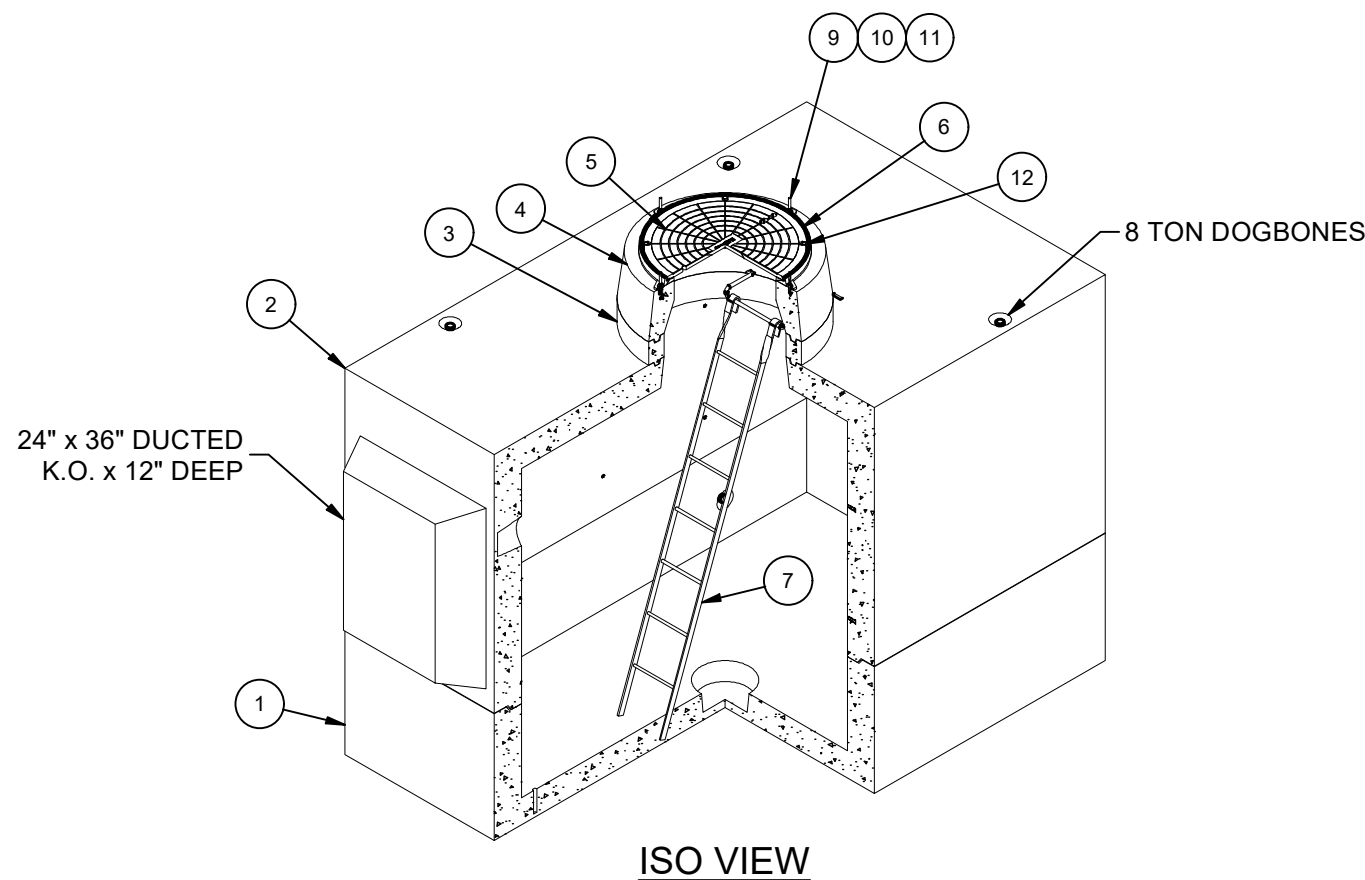


DESIGN NOTES

- THIS PRODUCT MUST ONLY BE PRODUCED IN A JENSEN INFRASTRUCTURE FACILITY.
- ALL CONCRETE MUST HAVE A 28 DAY COMPRESSIVE STRENGTH OF 5,500 PSI.
- REINFORCING STEEL MUST COMPLY WITH ASTM A615 GRADE 60 OR ASTM A706 GRADE 60.
- SEE TITLE BLOCK FOR BURY DEPTH RANGE, WATER TABLE LEVEL, AND DESIGN AND LOADING SPECIFICATIONS.
- SOIL UNIT WEIGHT – 120 lbs/cu.ft.
- EQUIVALENT LATERAL EARTH PRESSURE DRY: 36 lbs/cu.ft.
- EQUIVALENT LATERAL EARTH PRESSURE WET: 80 lbs/cu.ft.
- UNLESS OTHERWISE NOTED OR SPECIFIED THE STRUCTURE MUST BE INSTALLED PER "JENSEN PRECAST UNDERGROUND UTILITY STRUCTURES INSTALLATION PROCEDURE" FOUND AT <https://www.jensenprecast.com/Utility-Structures-Installation-Instructions-d2595.pdf>
- DESIGNED PER CALCS. #35215.
- ALL PARTS TO BE STENCILED: MFG DATE / PRODUCT ID / WEIGHT.
- MINIMUM EXCAVATION SIZE: 8'-6" X 14'-6" X DEPTH REQ'D.
- VAULT TO BE PLACED ON A MIN. 6" BASE OF CRUSHER RUN FOR EASE OF INSTALLATION AND EVEN LOAD DISTRIBUTION.
- 1/2" THREADED BRASS BONDING INSERT "GRD" SHOULD BE STENCILED IN RED LETTERS.

BILL OF MATERIALS

ITEM	UNIT QTY	QTY	PART NUMBER	DESCRIPTION	MASS (lb)
1	1	1	100009535	Vault 72120x24 Rect. Bottom Section Sump	14355
2	1	1	100009526	Vault 72120x60 Rect. Top Section 36"C Knockout Ducted	23318
3	1	1	100012117	Grade Ring D3645x6	288
4	1	1	100012113	Grade Ring Reducer D3036x12	734
5	1	1	100006914	CI COVER 30DIA NF R-1581-5045 ASTM A48 CL35B PH B/D - ELECTRIC	224
6	1	1	100006934	CI RING 30DIA NF R-1581 ASTM A-48 CL35B 2-FLANGE DOWN	99
7	1	1	100002555	LADDER HOOKED GALV 8FT I3600	39
8	1	1	100002564	LADDER STEP RUNG 12B31 TYPE 1 MH KNURLED GALV 3/4X16	
9	1	4	100008115	STUD BOLT 1/2X5 UNC LEVELING PLAIN	
10	1	4	100007007	HEX NUT 1/2-13 UNC HEAVY GALV	
11	1	4	100002657	WASHER FLAT 1/2 REGULAR TYPE A RAW	
12	1	4	100007016	BOLT HEX 5/8-11 UNC 1.625 304SS	
13	1.000 ul	1.000 ul	100005749	SEALANT JOINT BUTYL RUBBER ASTM C-990 AND M198 CS-102 1IN EQUIV X14.5FT PER BOX 118FT	



LIFTING NOTES

- FIELD INSTALLATION: PLANT DEMOLDING: MINIMUM HANDLING CONCRETE STRENGTH F'c = 5500 PSI RIGGING EQUALIZER REQUIRED TO EQUALIZE LOAD TO 4 LIFTING POINTS WITH A SLING ANGLE BETWEEN 60° AND 90°
- |              |                    |                 |                       |
|--------------|--------------------|-----------------|-----------------------|
| BURY DEPTH:  | 0.0' - 4.0' to Top |                 |                       |
| WATER LEVEL: | 3.0'               | APPROX. WEIGHT: | 39067.03 Lbs          |
| DESIGN SPEC: | ACI 318, ASTM C857 | LOADING SPEC:   | A-16 (AASHTO HS20-44) |
| AGENCY:      | AGENCY SPEC:       |                 |                       |

**WWW.JENSENPRECAST.COM**

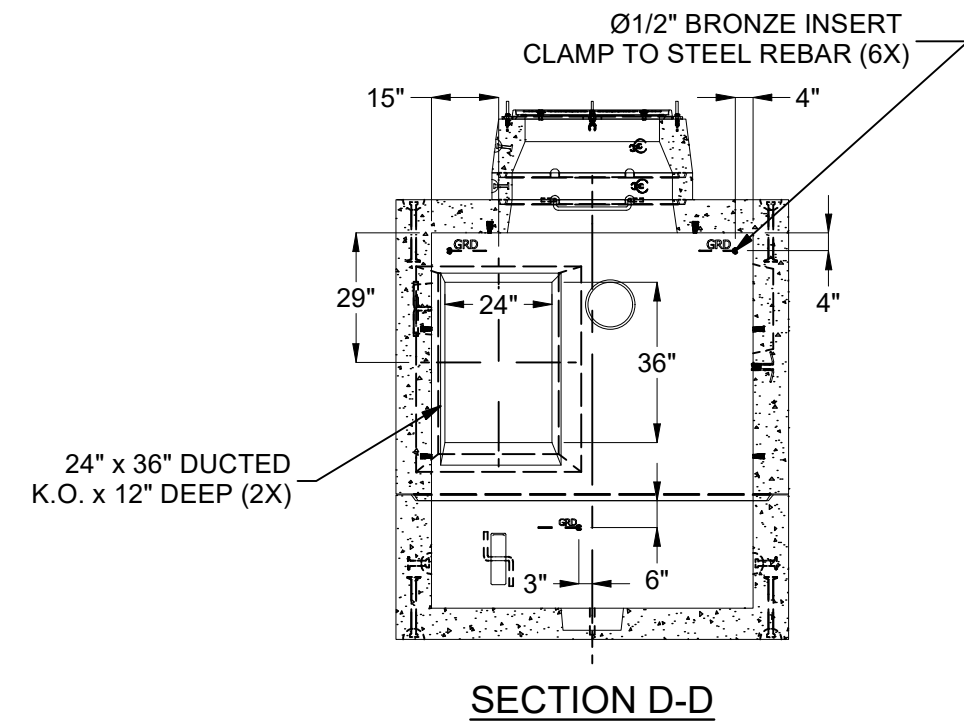
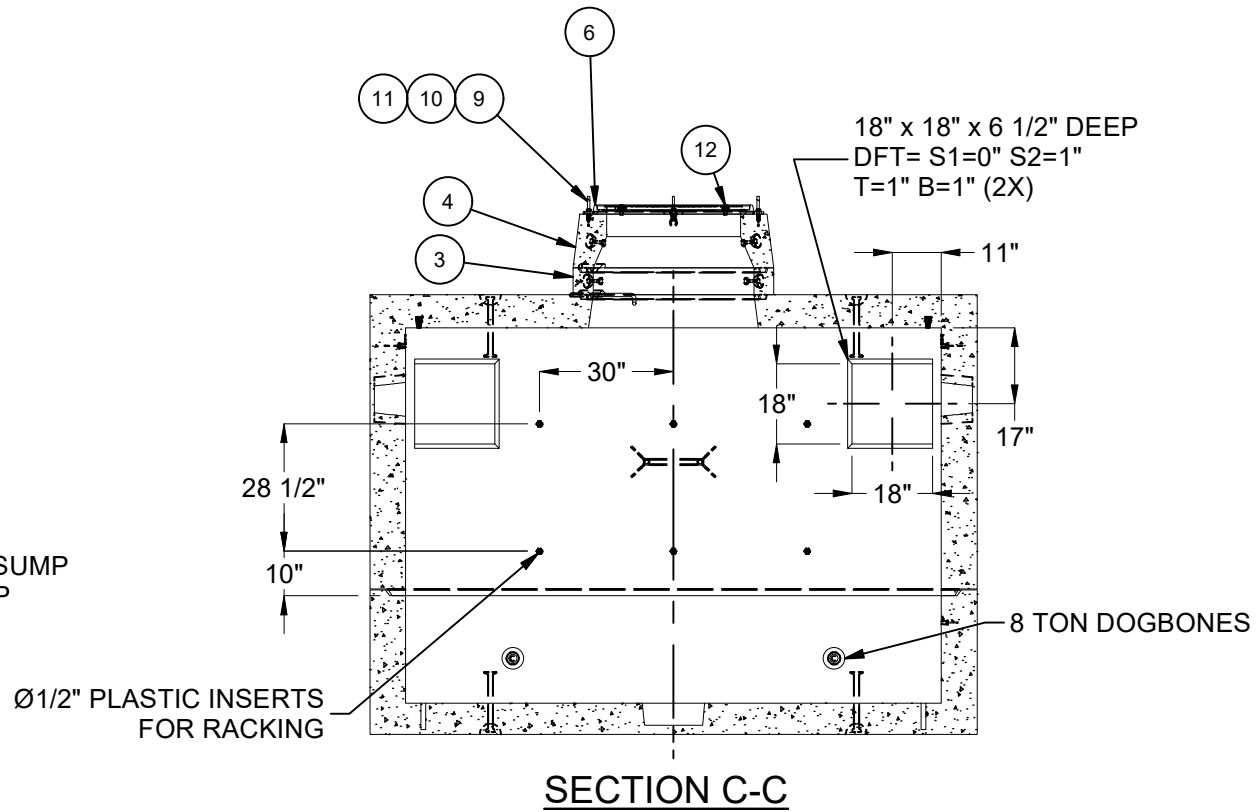
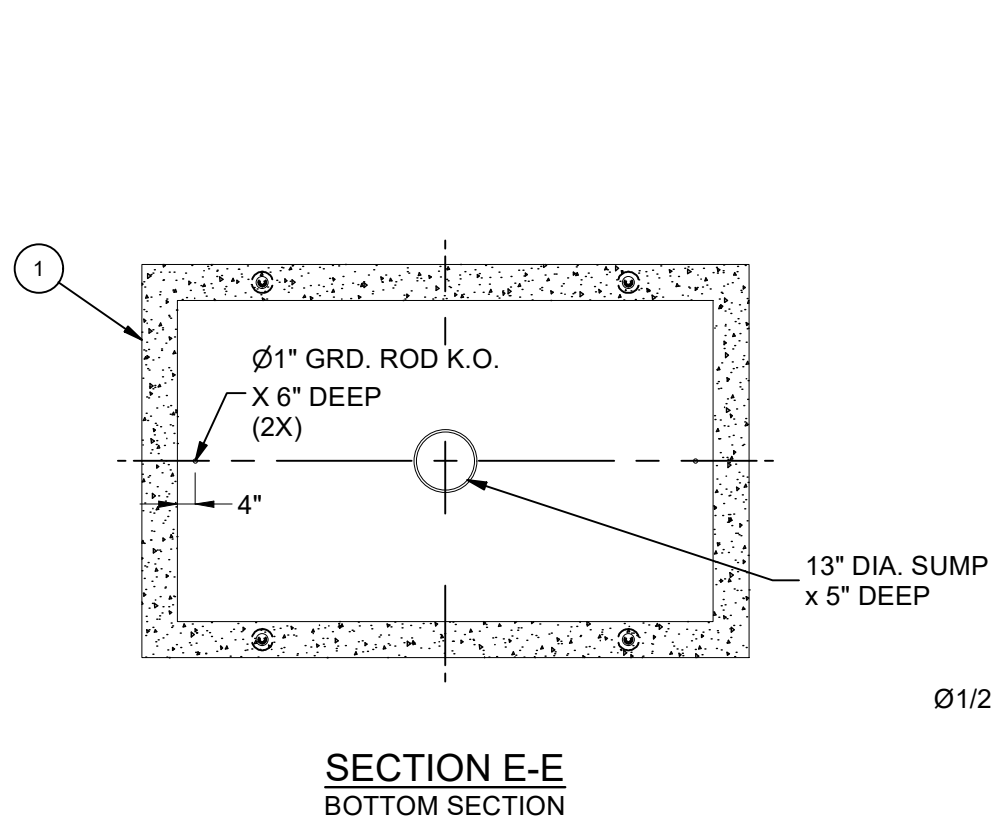
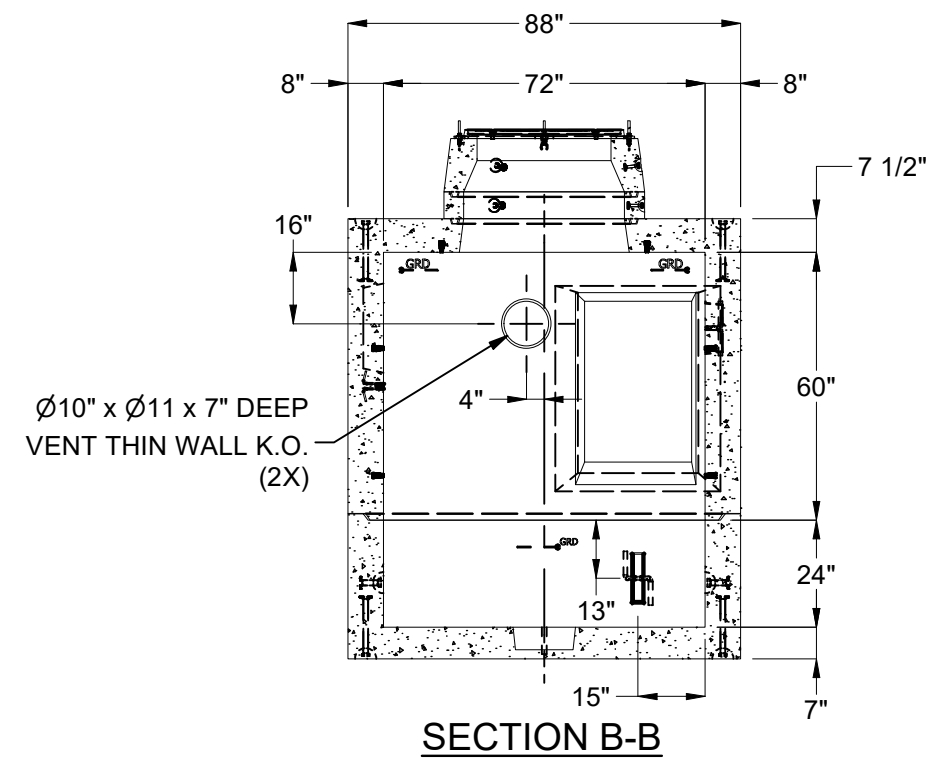
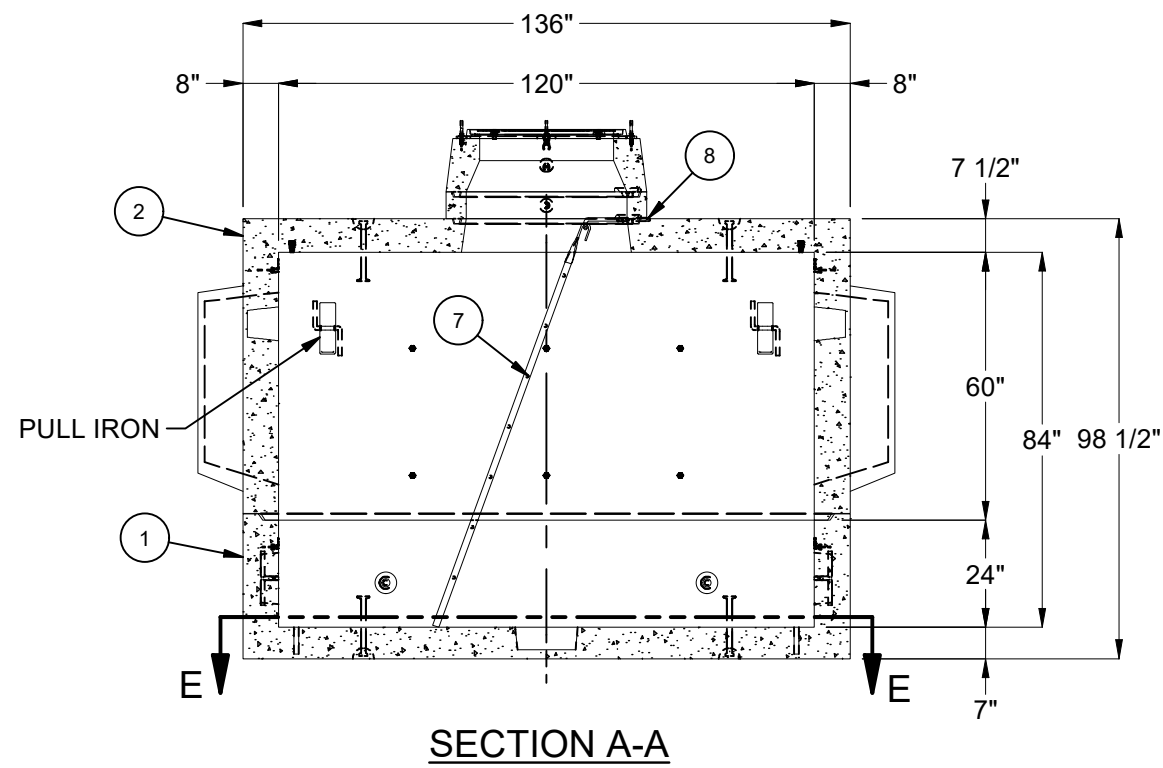
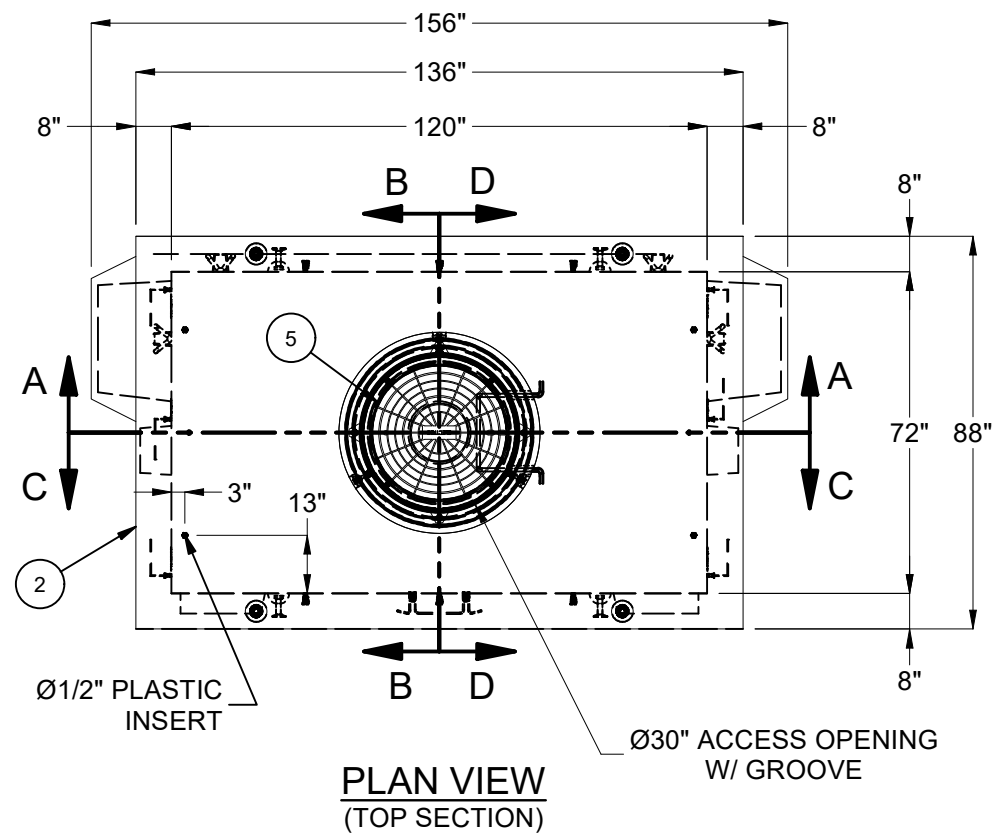
©2025 Jensen Infrastructure - All rights reserved.  
 All materials appearing as Jensen Infrastructure documents and the like are proprietary work product and are protected under U.S. copyright and other laws.  
 Unless in conjunction with business conducted with Jensen Infrastructure any use of Jensen Infrastructure work product without express, written consent is prohibited, and recipient is prohibited from distributing any and all work product to non-approved third parties under penalty of civil action. This product shall only be produced in a Jensen Infrastructure facility.

REVISION HISTORY

REV	DESCRIPTION	DATE	APPROVED
C-1	REVISED DUCTED K.O.'S	11/6/2025	

DESCRIPTION:		REV:
Vault Layout 72120x84 Knockout Ducted, Sump 36"C		C-1
LAYOUT REVIEW		
PART NUMBER:	100010522	DRAWN BY: S. Rodarte
CREATED:	3/20/2024	MODIFIED: 11/6/2025
		SHEET: 1 OF 2

100010522.rdw



100010522.rdw

BURY DEPTH:	0.0' - 4.0' to Top
WATER LEVEL:	3.0'
DESIGN SPEC:	ACI 318, ASTM C857
AGENCY:	
APPROX. WEIGHT:	39067.03 Lbs
LOADING SPEC:	A-16 (AASHTO HS20-44)
AGENCY SPEC:	

**Infrastructure**  
**JENSEN**  
WWW.JENSENPRECAST.COM

©2025 Jensen Infrastructure - All rights reserved.  
All materials appearing as Jensen Infrastructure documents and the like are proprietary work product and are protected under U.S. copyright and other laws.  
Unless in conjunction with business conducted with Jensen Infrastructure any use of Jensen Infrastructure work product without express, written consent is prohibited, and recipient is prohibited from distributing any and all work product to non-approved third parties under penalty of civil action. This product shall only be produced in a Jensen Infrastructure facility.

DESCRIPTION:	Vault Layout 72120x84 Knockout Ducted, Sump 36"C		REV:	C-1
LAYOUT DRAWING				
PART NUMBER:	100010522	DRAWN BY:	S. Rodarte	
CREATED:	3/20/2024	MODIFIED:	11/6/2025	
			SHEET:	2 OF 2