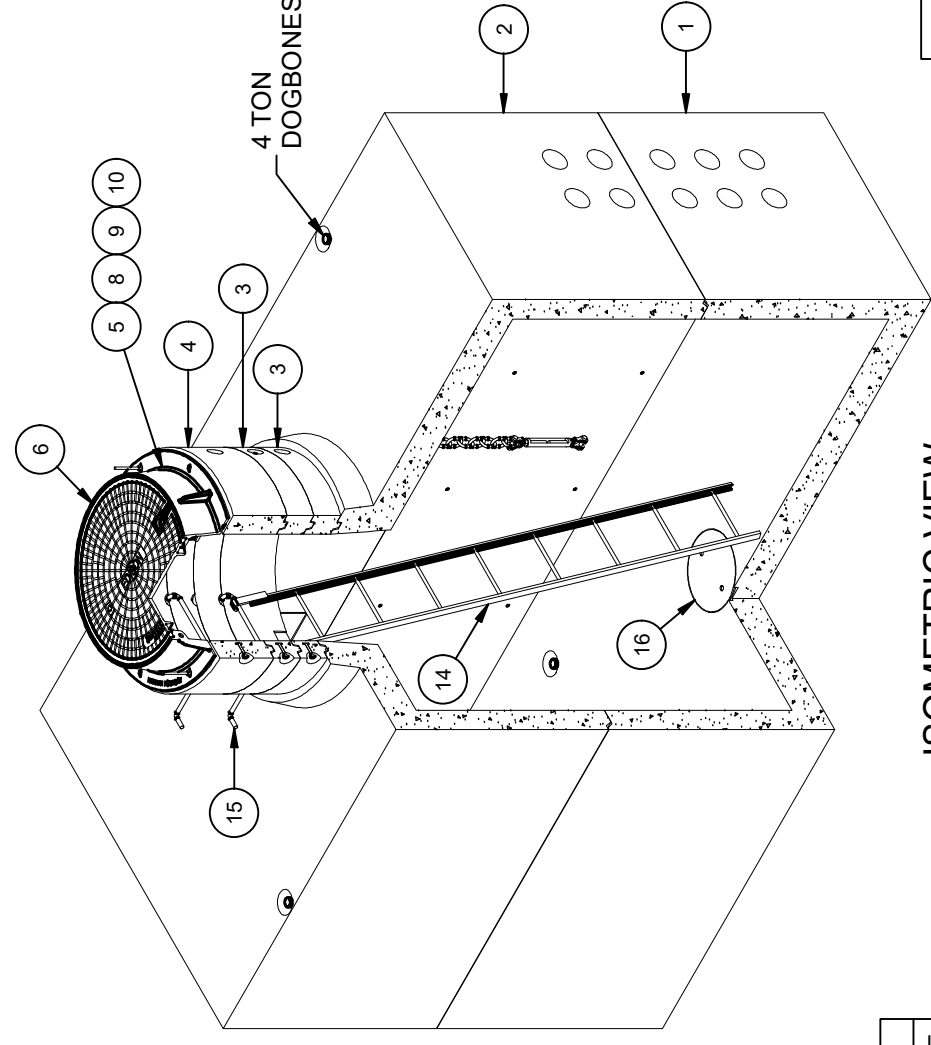


DESIGN NOTES

- DESIGNED IN ACCORDANCE WITH AASHTO HS20-44 TRAFFIC BRIDGE LOADING USING 5,500 PSI COMPRESSIVE STRENGTH CONCRETE AND 60,000 PSI YIELD STRENGTH ASTM A-706 STEEL REINFORCEMENT PER CALCS. #31094.
- MINIMUM EXCAVATION SIZE: 7'-10" X 13'-10" DEPTH REQD.
- COVER DESIGN FOR TRAFFIC LOADING.
- VAULT TO BE PLACED ON A MIN. 6" BASE OF CRUSHER RUN FOR EASE OF INSTALLATION AND EVEN LOAD DISTRIBUTION.
- CONCRETE MIX USED IN POURING THIS PRODUCT SHALL USE FLY ASH AS AN ADMIXTURE.
- FINISH COATING: ALL INTERIOR WALLS AND CEILING SHALL BE PAINTED WHITE.
- ALL PARTS TO BE STENCILED: MFG DATE / JOB NUMBER / PRODUCT ID / WEIGHT.
- "GRD" STENCILED IN RED LETTERS (1 1/2" MIN. - 2" MAX.)
- FOR COMPLETE DESIGN AND PRODUCT INFORMATION CONTACT JENSEN PRECAST.

BILL OF MATERIALS

ITEM	UNIT QTY	QTY	PART NUMBER	DESCRIPTION	MASS (lb)
1	1	1	100009520	Vault 72144x42 Rect. Bottom Section Terminators Sump Edison UGS MH 310	15724
2	1	1	100009514	Vault 72144x42 Rect. Top Section 36"C Terminators Edison UGS MH 310	15467
3	1	2	100012117	Grade Ring D3645x6	288
4	1	1	100012643	Grade Ring D3645x12 Flat with Inserts	610
5	1	1	100009392	CI RING 30DIAx8IN NEENAH SWIVELoc NF-01502001	232
6	1	1	100009389	CI CVR 30DIA NEENAH SWIVELoc ASTM A49 CL35B LH SO CAL EDISON NF-01505030	257
7	1	1	100008122	PLUG PICKHOLE NEOPRENE RUBBER CI COVER ED/LA	
8	1	4	100009758	STUD BOLT 1/2X8 UNC LEVELING PLAIN	
9	1	8	100007007	HEX NUT 1/2-13 UNC HEAVY GALV	
10	1	8	100002657	WASHER FLAT 1/2 REGULAR TYPE A RAW	
11	1	2	100013515	CHAIN 1/2 7-1/2FT GR-30 (FIELD CUT)	
12	1	2	100009367	SHACKLE 5/8IN W/3/4 COTTER PIN GALV	
13	1	2	100009368	TURNBUCKLE CLEVIS-TO-CLEVIS 3/4 THREADED GALV	
14	1	1	100005672	LADDER HOOKED GALV 10FT-6IN ED/LA I3382	
15	1	2	100002564	LADDER STEP RUNG 12B31 TYPE 1 MH KNURLED GALV 3/4X16	
16	1	1	100006783	SUMP COVER FOR 13"SUMP(15"OD)GALV DIA PLATE	
17	1	4	100022758	GROUND ANCHOR BRACKET KIT HALO HB304R	
18	1	4	100004320	BOLT HEX 1/2-13 UNC 1 304SS	
19	1	1	100008798	ADHESIVE SIKADUR 31 HI-MOD GEL	
20	3.000 gal	3.000 gal	100006420	COATING PAINT LATEX WHITE	
21	1.000 ul	1.000 ul	100005749	SEALANT JOINT BUTYL RUBBER ASTM C-990 AND M198 CS-102 1IN EQUIV X14.5FT PER BOX 118FT	



ISOMETRIC VIEW

LIFTING NOTES

- FIELD INSTALLATION: PLANT DEMOLING: MINIMUM HANDLING CONCRETE STRENGTH F_c = 5500 PSI RIGGING EQUALIZER REQUIRED TO EQUALIZE LOAD TO 4 LIFTING POINTS WITH A SLING ANGLE BETWEEN 60° AND 90°

BURY DEPTH:	0.0' - 4.0' to Top
WATER LEVEL:	3.0'
DESIGN SPEC:	ACI 318,ASTM C857
AGENCY:	Edison
APPROX. WEIGHT:	32955.42 Lbs
LOADING SPEC:	A-16 (AASHTO HS20-44)
AGENCY SPEC:	MH 310

REVISION HISTORY

REV	DESCRIPTION	DATE	APPROVED
B-1	INITIAL RELEASE INVENTOR	3/22/2024	

DESCRIPTION:

Vault Layout 72144x84 Terminators Sump 30°C Edison MH 310 Int. Paint - White Latex

REVISION HISTORY

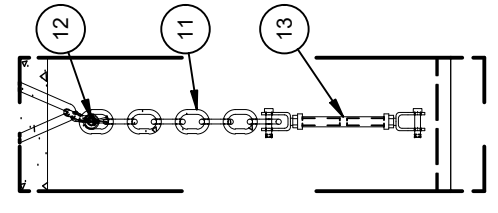
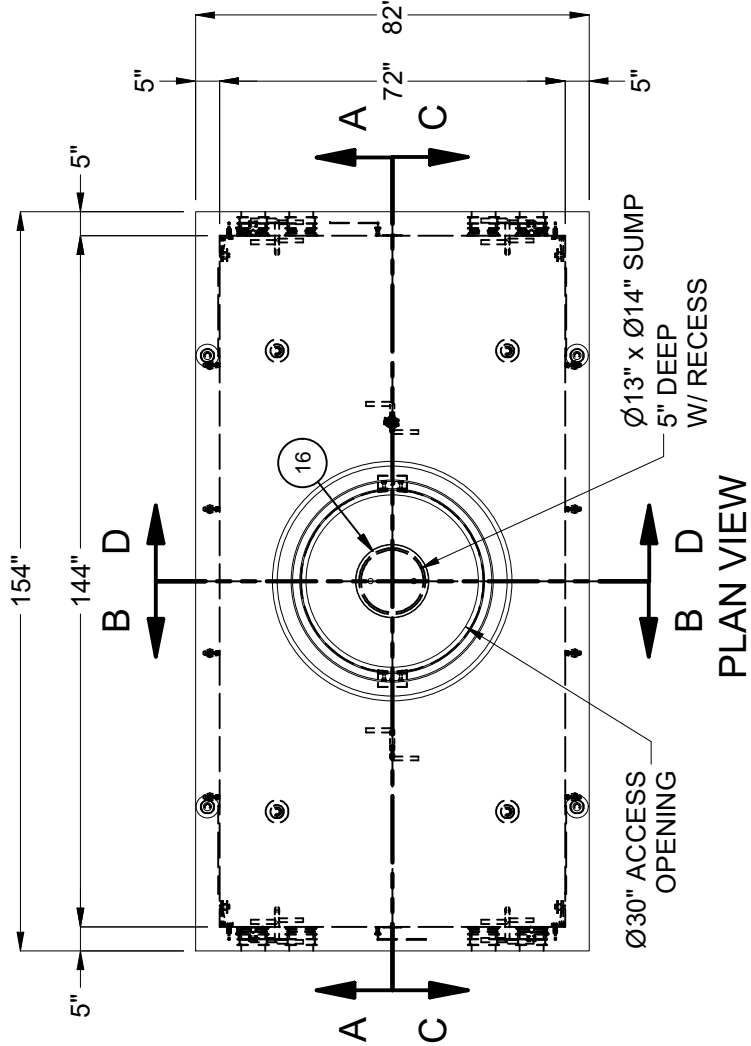
REV: B-1
SHEET: 94
1 OF 2

DESIGN SPEC:	Edison
APPROX. WEIGHT:	32955.42 Lbs
LOADING SPEC:	A-16 (AASHTO HS20-44)
AGENCY SPEC:	MH 310

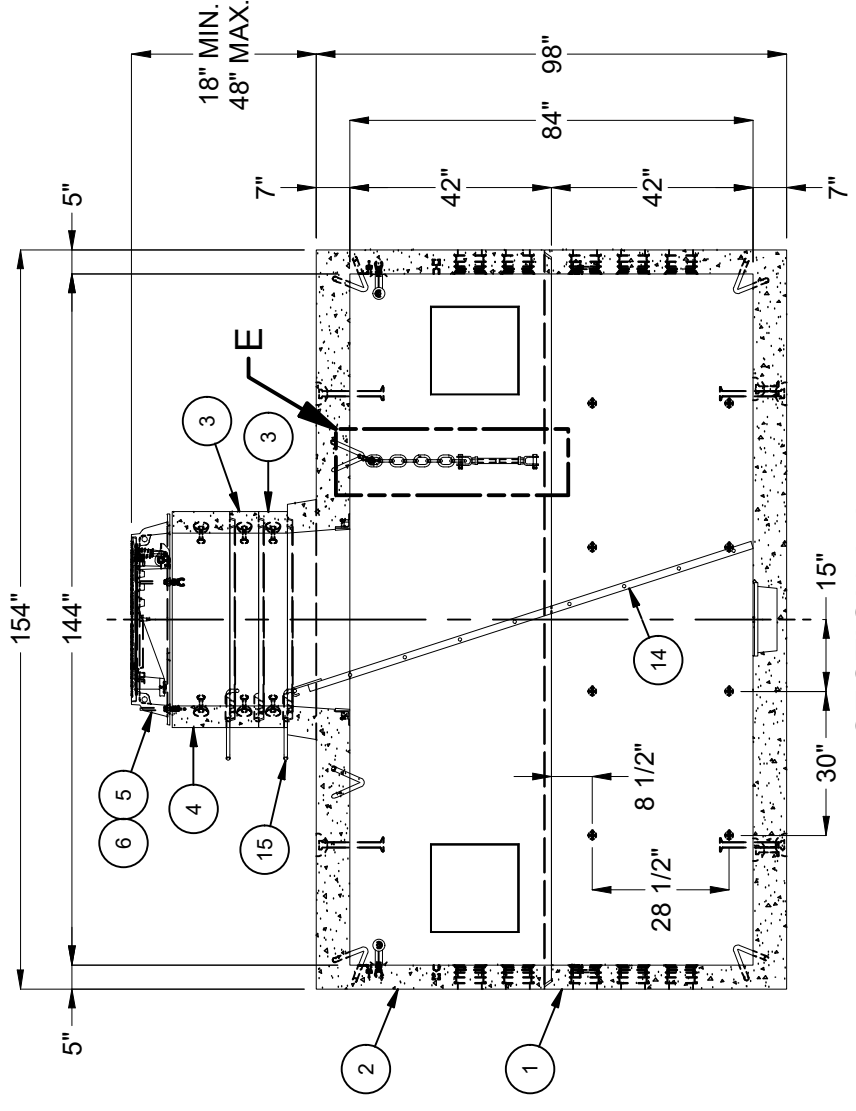
DESCRIPTION:	Vault Layout 72144x84 Terminators Sump 30°C Edison MH 310 Int. Paint - White Latex
PART NUMBER:	100010531
CREATED:	12/28/2023
DRAWN BY:	J. Prado
MODIFIED:	3/22/2024

©2024 Jensen Precast. All rights reserved. All materials appearing as Jensen Precast documents and the like are proprietary work product and are protected under U.S. copyright and other laws. Unless in conjunction with business conducted with Jensen Precast, any use of Jensen Precast work product without express, written consent is prohibited, and recipient is prohibited from distributing any and all work product to non-approved third parties under penalty of civil action.

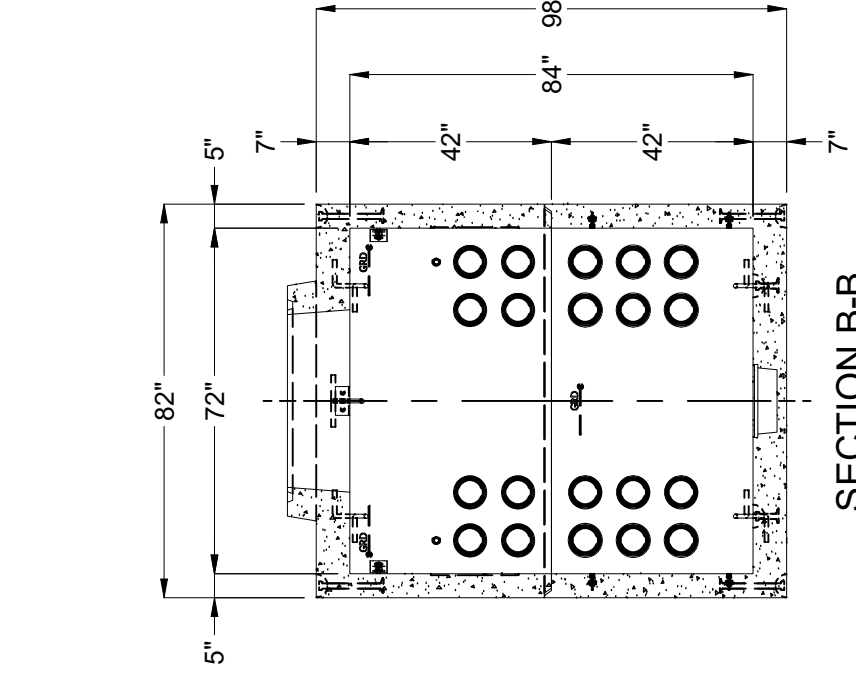
JENSEN PRECAST EST. 1968
WWW.JENSENPRECAST.COM



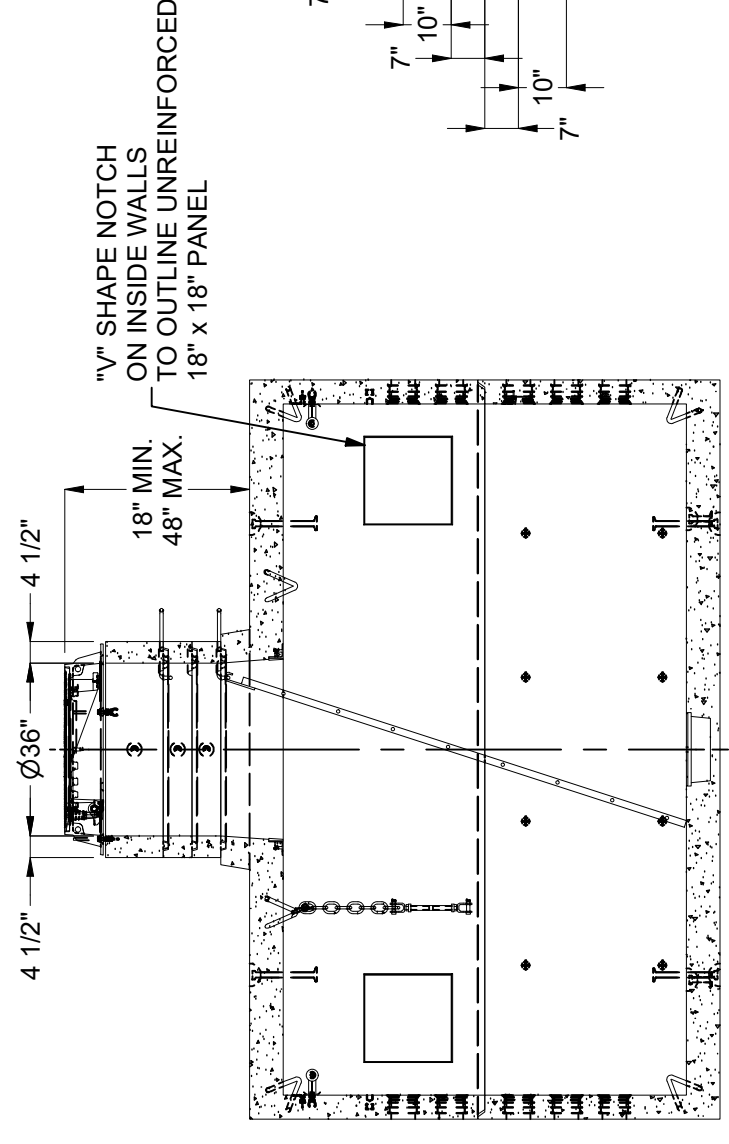
DETAIL E



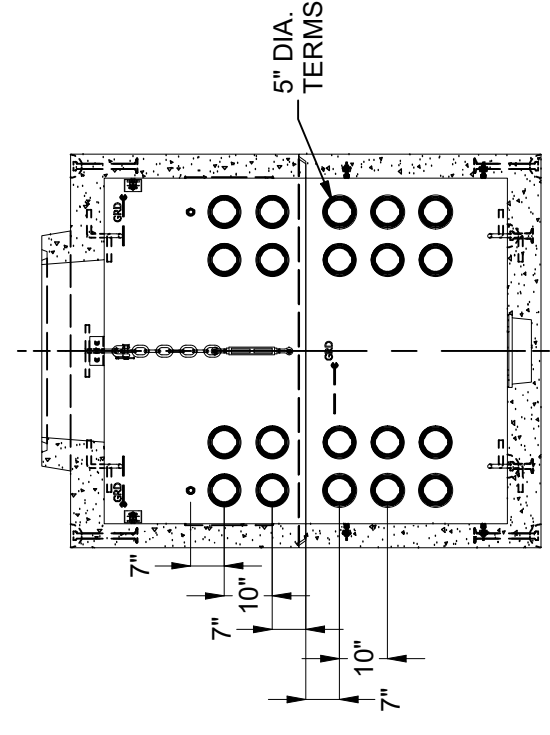
SECTION A-A



SECTION B-B



SECTION C-C



SECTION D-D

BURY DEPTH:	0.0' - 4.0' to Top
WATER LEVEL:	3.0'
DESIGN SPEC:	ACI 318, ASTM C857
AGENCY:	Edison
APPROX. WEIGHT:	32955.42 Lbs
LOADING SPEC:	A-16 (AASHTO HS20-44)
AGENCY SPEC:	MH 310

JENSEN PRECAST EST. 1968
WWW.JENSENPRECAST.COM

©2024 Jensen Precast. All rights reserved. All materials appearing as Jensen Precast documents and the like are proprietary work product and are protected under U.S. copyright and other laws. Unless in conjunction with business conducted with Jensen Precast, any use of Jensen Precast work product without express, written consent is prohibited, and recipient is prohibited from distributing any and all work product to non-approved third parties under penalty of civil action.

DESCRIPTION:	Vault Layout 72144x84 Terminators Sump 30°C Edison MH 310 Int. Paint - White Latex
LAYOUT DRAWING	
PART NUMBER:	100010531
CREATED:	12/28/2023
DRAWN BY:	J. Prado
MODIFIED:	3/22/2024

REV:	B-1
SHEET:	95
	2 OF 2

MPI:135010001