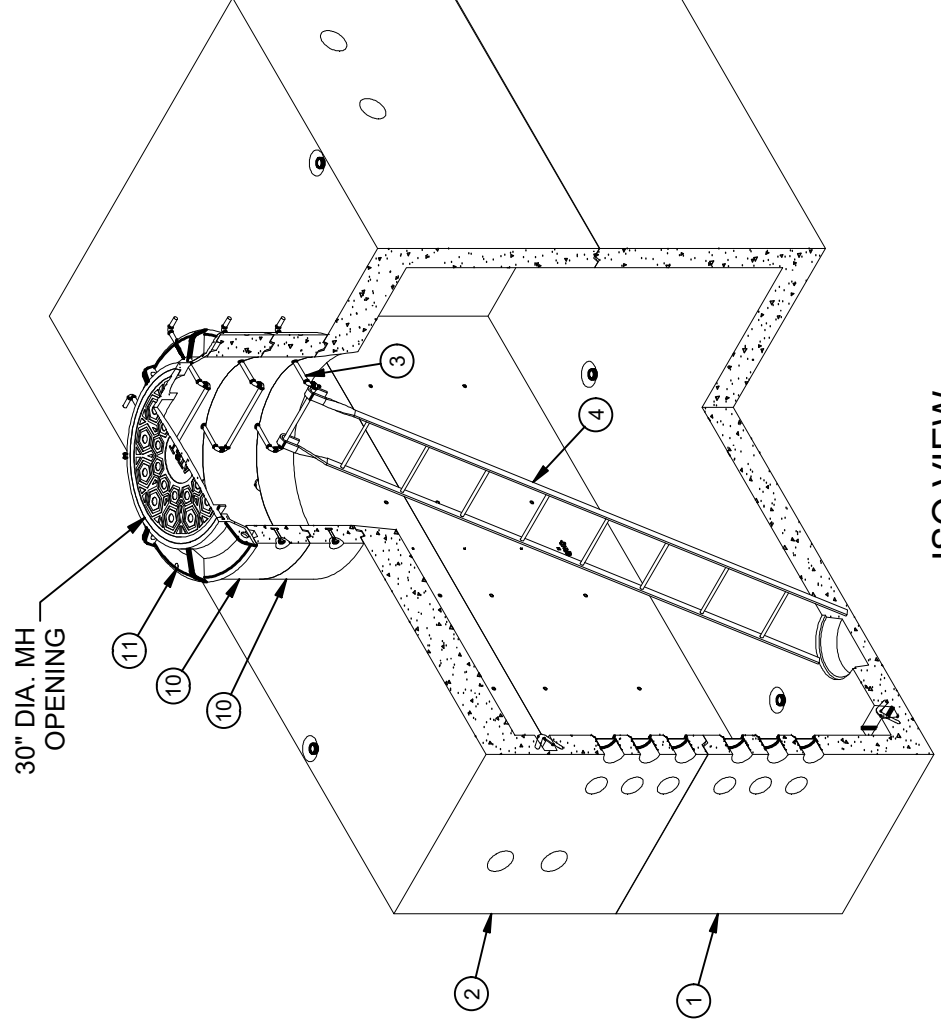


DESIGN NOTES

- MANHOLE DESIGNED IN ACCORDANCE WITH AASHTO H-20-44 TRAFFIC BRIDGE LOADING USING 5,500 PSI COMPRESSIVE STRENGTH CONCRETE AND 60,000 PSI YIELD STRENGTH ASTM A-706 STEEL REINFORCEMENT PER CALCS. #33840.
- EACH CONCRETE SECTION SHALL BE MARKED ON THE INSIDE & OUTSIDE WITH "JENSEN PRECAST-FONTANA", AT&T OIN# AND THE DATE OF POUR. CONFORM TO STANDARD PLAN S-601-3 SECTION 3-2.1.1(e).
- EACH CONCRETE SECTION SHALL HAVE CAST-IN ON THE INSIDE "JENSEN", AND THE YEAR.
- MINIMUM EXCAVATION SIZE: 7'-10" X 11'-10" X DEPTH REQ'D.
- VAULT TO BE PLACED ON A MIN. 6" BASE OF CRUSHER RUN FOR EASE OF INSTALLATION AND EVEN LOAD DISTRIBUTION.
- FINISH COATING: ALL INTERIOR WALLS AND CEILING SHALL BE PAINTED WHITE.
- ALL PARTS TO BE STENCILED: MFG DATE / JOB NUMBER / PRODUCT ID / WEIGHT.

BILL OF MATERIALS

| ITEM | UNIT QTY | QTY | PART NUMBER | DESCRIPTION | MASS (lb) |
|------|-----------|-----------|-------------|---|-----------|
| 1 | 1 | 1 | 100009516 | Vault 72144x42 Rect. Bottom Section Terminators Sump AT&T | 15904 |
| 2 | 1 | 1 | 100009508 | Vault 72144x42 Rect. Top Section Terminators AT&T | 16714 |
| 3 | 1 | 3 | 100002564 | LADDER STEP RUNG 12B31 TYPE 1 MH KNURLED GALV 3/4X16 | |
| 4 | 1 | 1 | 100005647 | LADDER HOOKED GALV 9FT PB/GT I3600 | |
| 5 | 1 | 20 | 100002529 | CABLE RACK 24 HOLE GALV W/O TABS | |
| 6 | 1 | 16 | 100002583 | CABLE RACK CORNER SUPPORT 18 X 18 10A56 GALV | |
| 7 | 1 | 16 | 100002578 | CABLE RACK L-BRACKET 1/2 X 1 X 6-9/16 | |
| 8 | 16,000 ft | 16,000 ft | 100007104 | BONDING RIBBON 3/8 12A55 | |
| 9 | 1 | 12 | 100003551 | BOLT HEX 1/4-20 UNC 0.75 ZINC | 587 |
| 10 | 1 | 2 | 100012039 | Grade Ring D3645x12 | 570 |
| 11 | 1 | 1 | 100006953 | CI RING & COVER 30DIA EJ 1810A1VH/1820ZVH ASTM A48 CL35B 5-5/8-FRAME DOWN AT&T | |
| 12 | 1 | 10 | 100007590 | CABLE RACK STRAP 3/16 X 1 GALV INW 99Z438 | |
| 13 | 1 | 88 | 100002658 | WASHER FLAT 1/2 REGULAR TYPE A ZINC | |
| 14 | 1 | 24 | 100002650 | WASHER FLAT 1/4 FENDER TYPE A ZINC | |
| 15 | 1 | 48 | 100007007 | HEX NUT 1/2-13 UNC HEAVY GALV | |
| 16 | 1 | 72 | 100011407 | BOLT HEX 1/2-13 UNC 2.25 ZINC | |
| 17 | 1 | 48 | 100003492 | BOLT HEX 1/2-13 UNC 1.25 ZINC | |
| 18 | 2,750 gal | 2,750 gal | 100006420 | COATING PAINT LATEX WHITE | |
| 19 | 1,000 ul | 1,000 ul | 100005749 | SEALANT JOINT BUTYL RUBBER ASTM C-990 AND M198 CS-102 1IN EQUIV X14.5FT PER BOX 118FT | |



ISO VIEW

| REVISION HISTORY | |
|------------------|--|
| REV | DESCRIPTION |
| B-1-1 | REVISED DOGBONES FROM 4T TO 8T LIFTERS |

| | |
|----------|----------|
| DATE | APPROVED |
| 4/9/2024 | |

DESCRIPTION: Utility Vault 72144 Layout Assembly AT&T

REV: B-1-1

SHEET: 4

1 OF 2

| | | |
|--------------|-----------|---------------|
| PART NUMBER: | 100010534 | LAYOUT REVIEW |
| DRAWN BY: | R. Ramos | |
| CREATED: | 6/25/2019 | MODIFIED: |
| | | 4/9/2024 |

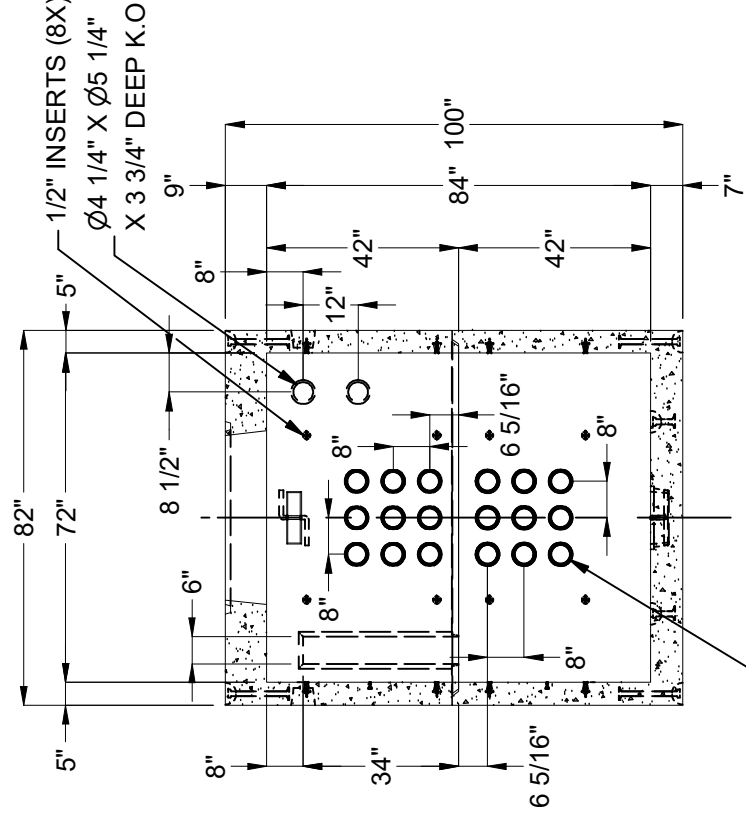


©2019 Jensen Precast. All rights reserved. All materials appearing as Jensen Precast documents and the like are proprietary work product and are protected under U.S. copyright and other laws. Unless in conjunction with business conducted with Jensen Precast, any use of Jensen Precast work product without express, written consent is prohibited, and recipient is prohibited from distributing any and all work product to non-approved third parties under penalty of civil action.

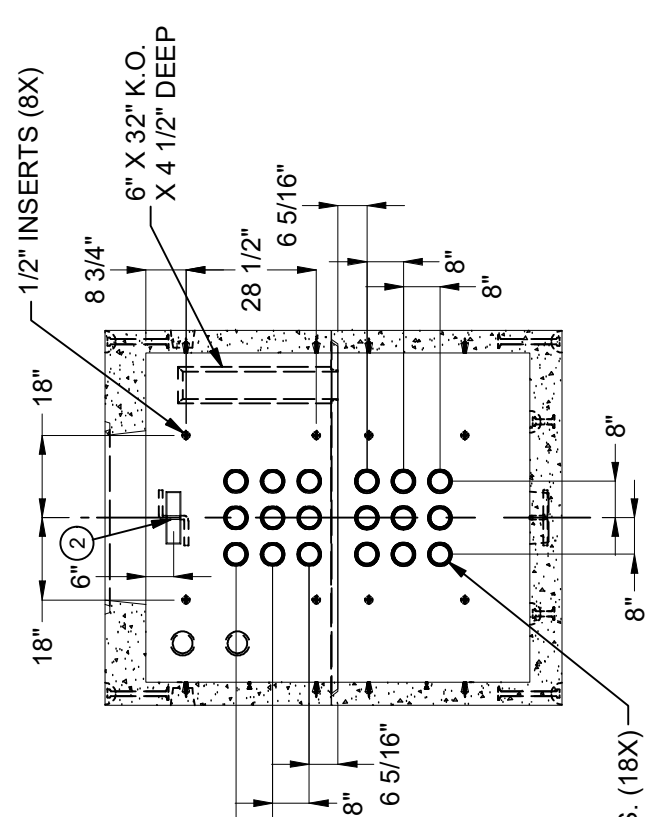
LIFTING NOTES

- FIELD INSTALLATION: PLANT DEMOLDING: MINIMUM HANDLING CONCRETE STRENGTH F_c = 5500 PSI RIGGING EQUALIZER REQUIRED TO EQUALIZE LOAD TO 4 LIFTING POINTS WITH A SLING ANGLE BETWEEN 60° AND 90°
- BURY DEPTH: 0.8' - 5.0' to Top of Section
- WATER LEVEL: 3.5' WEIGHT: 34538.26 Lbs
- DESIGN SPEC: ASTM C857, ACI 318 LOADING SPEC: A-16 (AASHTO HS20-44)
- AGENCY: AT&T AGENCY SPEC:

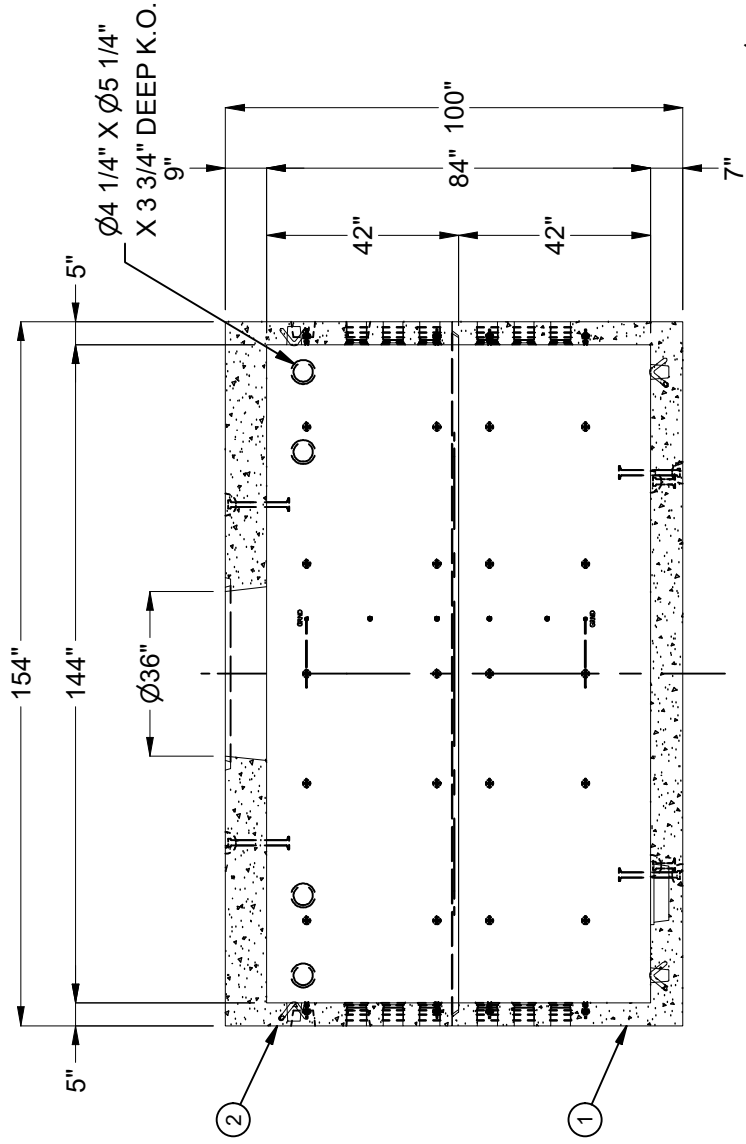
MPL103434.144



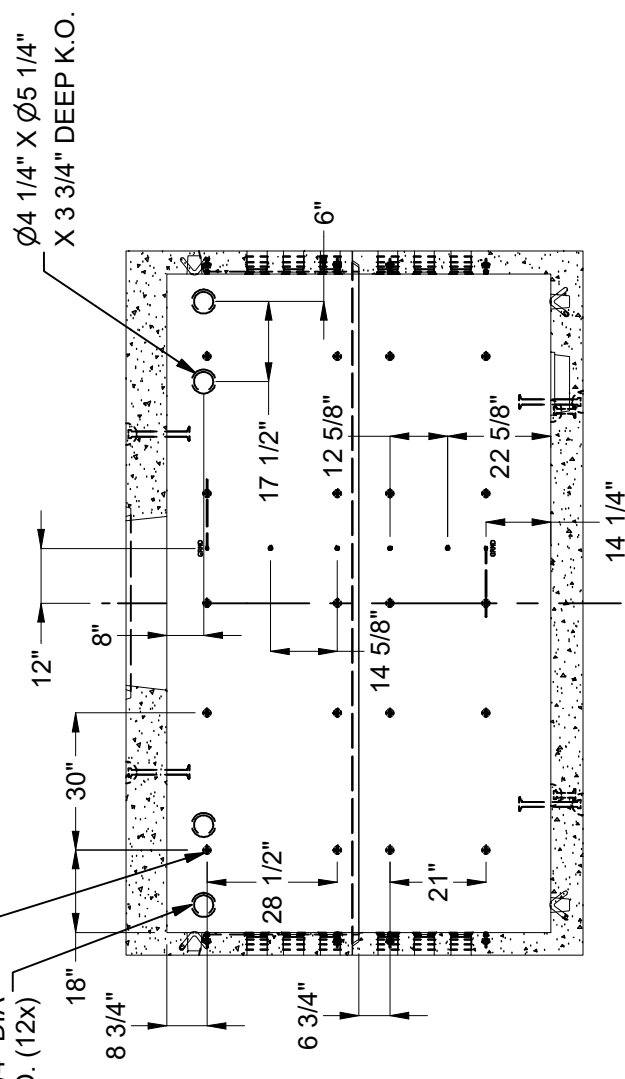
SECTION B-B



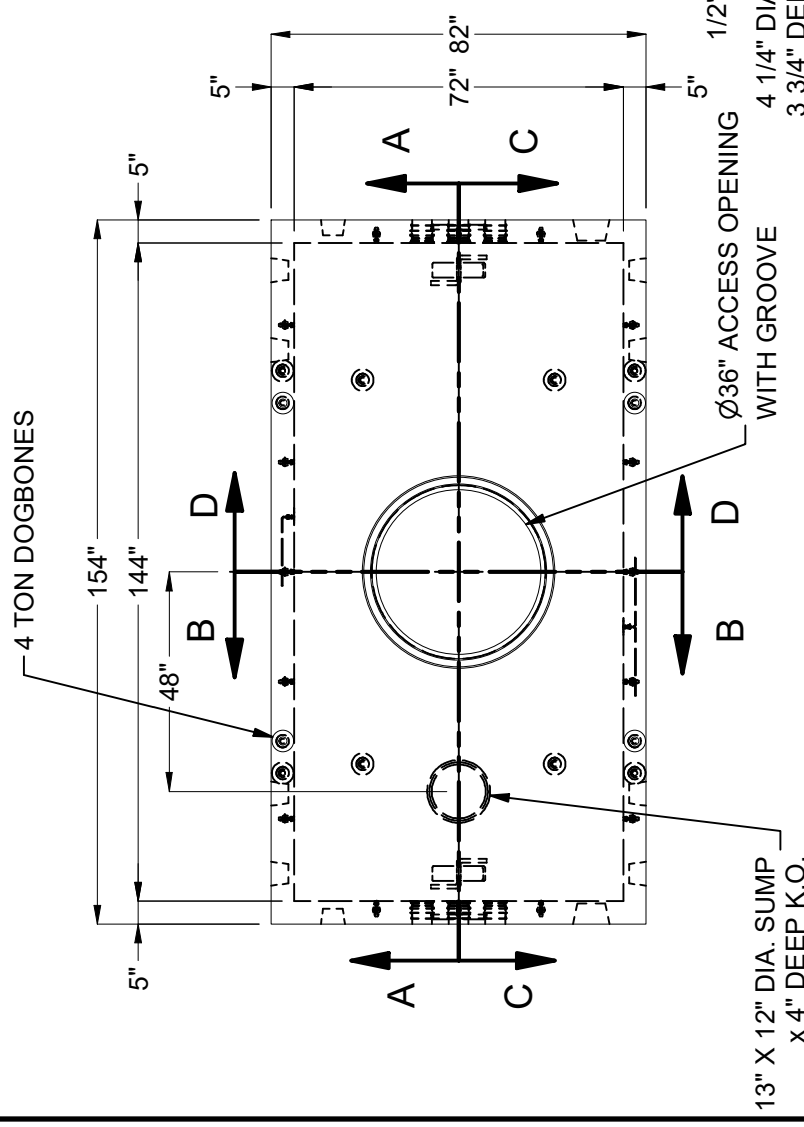
SECTION D-D



SECTION A-A



SECTION C-C



PLAN VIEW

| | | | |
|--|--|--|---------------------------|
| BURY DEPTH: 0.8' - 5.0' to Top of Section | | DESCRIPTION: Utility Vault 72144 Layout Assembly AT&T | |
| WATER LEVEL: 3.5' | WEIGHT: 34538.26 Lbs | LAYOUT DRAWING | |
| DESIGN SPEC: ASTM C857, ACI 318 | LOADING SPEC: A-16 (AASHTO HS20-44) | DRAWN BY: R. Ramos | MODIFIED: 4/9/2024 |
| AGENCY: AT&T | AGENCY SPEC: | PART NUMBER: 100010534 | CREATED: 6/25/2019 |
| | | REV: B-1-1 | SHEET: 5 |
| | | 2 OF 2 | |

©2019 Jensen Precast. All rights reserved. All materials appearing as Jensen Precast documents and the like are proprietary work product and are protected under U.S. copyright and other laws. Unless in conjunction with business conducted with Jensen Precast, any use of Jensen Precast work product without express, written consent is prohibited, and recipient is prohibited from distributing any and all work product to non-approved third parties under penalty of civil action.

