

- DESIGN NOTES**
- STANDARDS: AASHTO LRFD BRIDGE DESIGN SPECIFICATIONS, 8TH EDITION, WITH 2022 CALTRANS AMENDMENTS, CITY OF LOS ANGELES BUREAU OF ENGINEERING STANDARD PLAN S-601, MANUAL PART H, ASTM C-857. STRUCTURAL CALCS. #33879.
  - MATERIAL: CONCRETE,  $F'_c=5,500$  PSI. MIX 17 OR 30 INCLUDE FLY ASH AND DCI. REINFORCEMENT PER ASTM A-706,  $F_y=60,000$  PSI.
  - LOADS: VERTICAL LIVE LOAD: AASHTO HL-93. LIVE LOAD SURCHARGE: LA BOE PART H, FIGURE H 374.2A, MINIMUM 80 PSF (TO BOTTOM OF VAULT). SOIL LATERAL LOADS: 40 PCF (DRY), 81 PCF (SATURATED). SOIL BEARING CAPACITY = 1500 PSF. DESIGN SOIL DENSITY IS 120 PCF.
  - LOADS NOT INCLUDED. DESIGN DOES NOT INCLUDE COOPER E-80 RAILROAD LOADS OR LATERAL OR SURCHARGE LOADS THAT ARE PRODUCED BY FOOTING OR FOUNDATIONS ADJACENT TO THE STRUCTURE. THIS SUBSTRUCTURE SHALL BE KEPT AT LEAST IN A 1:1 RATIO AWAY FROM ALL FOOTINGS AND FOUNDATIONS, UNLESS THE ENGINEER OF RECORD APPROVES IN WRITING.
  - INSTALLATION: VAULT TO BE PLACED ON A MIN. 6" BASE OF CRUSHER RUN FOR EASE OF INSTALLATION AND EVEN LOAD DISTRIBUTION. BASE MATERIAL IN ACCORDANCE WITH SECTION 200-2 OF THE SSPWC (GREEN BOOK).
  - INSTALLATION LIMITS: VAULT SHALL HAVE A MINIMUM COVER OF 1'-6" AND A MAXIMUM COVER OF 5'-0".
  - EACH CONCRETE SECTION SHALL BE MARKED ON THE INSIDE & OUTSIDE WITH "JENSEN PRECAST-FONTANA", AT&T OIN# AND THE DATE OF POUR. CONFORM TO STANDARD PLAN S-601-3 SECTION 3-2.1.1(e).
  - EACH CONCRETE SECTION SHALL HAVE CAST-IN ON THE INSIDE "JENSEN", AND THE YEAR.
  - NO SHARP OR ROUGH EDGES ON THE TERMINATORS ENTERING THE VAULT.
  - K36X-MN12-09-LA GRADE RINGS, WITH APPROVED CAST IRON COVER TO BE USED WITH THIS VAULT.
  - MINIMUM EXCAVATION SIZE: 8'-4" X 14'-4" X DEPTH REQ'D.
  - ADDITIONAL SUBMITTAL, PERMIT AND CONSTRUCTION PLAN REVIEW WILL BE REQUIRED FOR EACH PROJECT LOCATION. SUBMIT TO CITY ENGINEER FOR APPROVAL PRIOR TO START OF ANY CONSTRUCTION.
  - ALL INSTALLATIONS SHALL COMPLY WITH ALL OTHER LOCAL GOVERNING CODES AND REGULATIONS INCLUDING CALIFORNIA PUBLIC UTILITIES COMMISSION REGULATIONS.
  - FINISH COATING: ALL INTERIOR WALLS AND CEILING SHALL BE PAINTED WHITE.

**LIFTING NOTES**

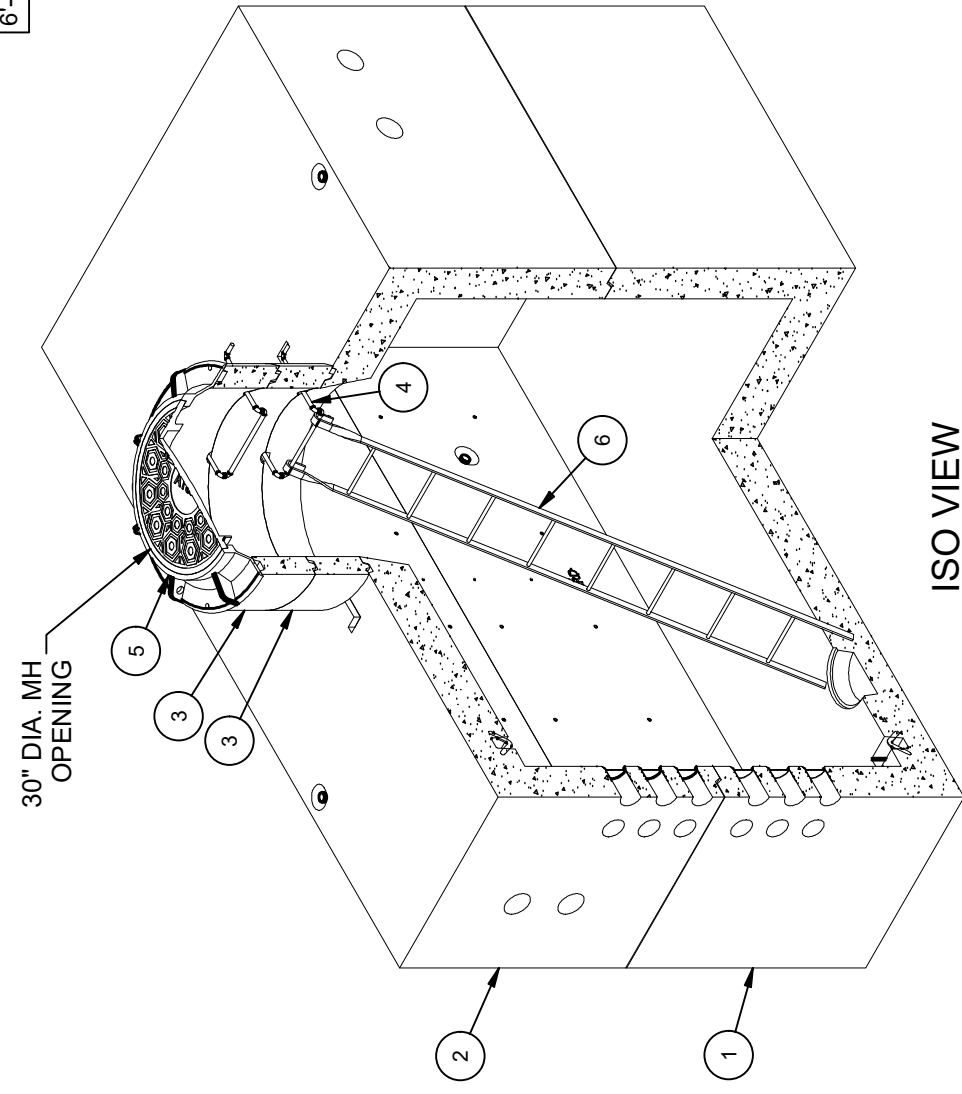
- THIS CONCRETE PRODUCT IS DESIGNED TO BE LIFTED WITH FOUR (4) EQUALLY LOADED RIGGINGS LEGS MIN. 60° SLING ANGLE, MEASURED FROM HORIZONTAL.

|                 |                      |
|-----------------|----------------------|
| BURY DEPTH:     | 1.5' - 5.0' to Top   |
| WATER LEVEL:    | 3.0'                 |
| DESIGN SPEC:    | AASHTO LRFD, ACI 318 |
| AGENCY:         | AT&T                 |
| APPROX. WEIGHT: | 51620.8 Lbs          |
| LOADING SPEC:   | AASHTO HL-93         |
| AGENCY SPEC:    | COLA                 |

| BILL OF MATERIALS |           |           |             |   |           |
|-------------------|-----------|-----------|-------------|---|-----------|
| ITEM              | UNIT QTY  | QTY       | PART NUMBER | DESCRIPTION   | MASS (lb) |
| 1                 | 1         | 1         | 100012823   | Vault 72144x42 Rect. Bottom Section Terminators Sump AT&T COLA                        | 25794     |
| 2                 | 1         | 1         | 100012824   | Vault 72144x42 Rect. Top Section 36"C Knockout, Terminators AT&T COLA                 | 23915     |
| 3                 | 1         | 2         | 100012115   | Grade Ring D3645x12 COLA INSP   | 579       |
| 4                 | 1         | 2         | 100002564   | LADDER STEP RUNG 12B31 TYPE 1 MH KNURLED GALV 3/4X16                                  |           |
| 5                 | 1         | 1         | 100006954   | CI RING & COVER 30DIA EJ 1810A1VH/1820ZVH AT&T COLA                                   | 570       |
| 6                 | 1         | 1         | 100005647   | LADDER HOOKED GALV 9FT PB/GT I3600  |           |
| 7                 | 1         | 20        | 100002529   | CABLE RACK 24 HOLE GALV W/O TABS  |           |
| 8                 | 1         | 16        | 100002583   | CABLE RACK CORNER SUPPORT 18 X 18 10A56 GALV  |           |
| 9                 | 1         | 16        | 100002578   | CABLE RACK L-BRACKET 1/2 X 1 X 6-9/16   |           |
| 10                | 16,000 ft | 16,000 ft | 100007104   | BONDING RIBBON 3/8 12A55  |           |
| 11                | 1         | 12        | 100003551   | BOLT HEX 1/4-20 UNC 0.75 ZINC   |           |
| 12                | 1         | 10        | 100007590   | CABLE RACK STRAP 3/16 X 1 GALV INW 99Z438   |           |
| 13                | 1         | 88        | 100002658   | WASHER FLAT 1/2 REGULAR TYPE A ZINC   |           |
| 14                | 1         | 24        | 100002650   | WASHER FLAT 1/4 FENDER TYPE A ZINC  |           |
| 15                | 1         | 48        | 100007007   | HEX NUT 1/2-13 UNC HEAVY GALV   |           |
| 16                | 1         | 72        | 100005059   | BOLT HEX 1/2-13 UNC 2.5 ZINC  |           |
| 17                | 1         | 48        | 100003492   | BOLT HEX 1/2-13 UNC 1.25 ZINC   |           |
| 18                | 3,000 gal | 3,000 gal | 100006420   | COATING PAINT LATEX WHITE   |           |
| 19                | 1,000 ul  | 1,000 ul  | 100005749   | SEALANT JOINT BUTYL RUBBER ASTM C-990 AND M198 CS-102 1IN EQUIV X14.5FT PER BOX 118FT |           |

| DESCRIPTION                                      | AT&T OIN#    |
|--|--------------|
| 6'-0" x 12'-0" x 7'-0" DEEP (38Y-4046-1 TRFC-LA) | 100061887-LA |

**STOCKPILE - JENSEN PRECAST  
CITY OF LOS ANGELES INSPECTION  
REQUIRED WO# C0034604**



**ISO VIEW**

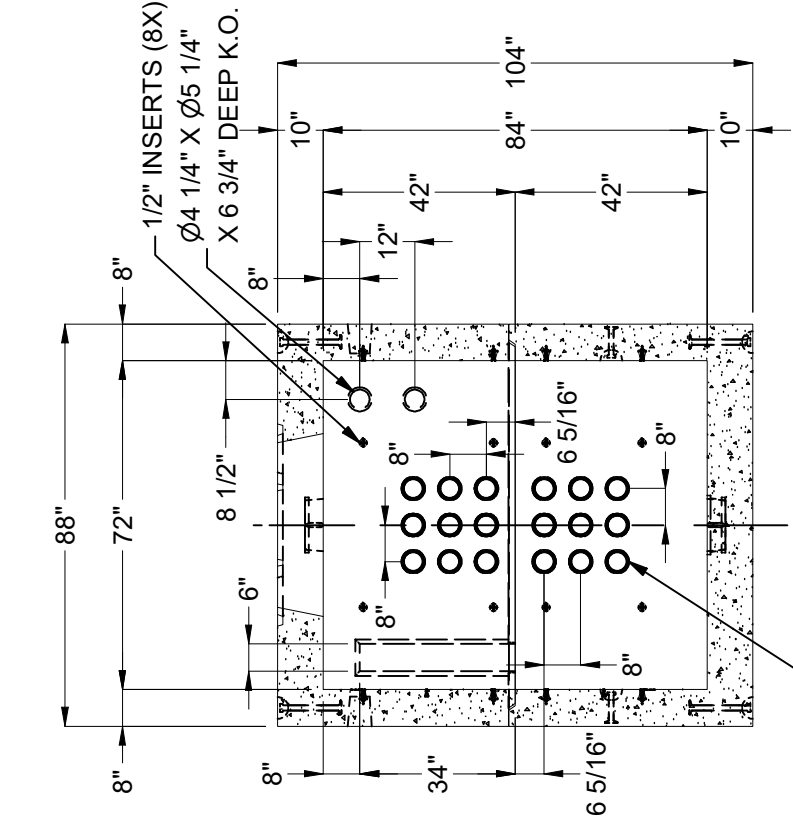
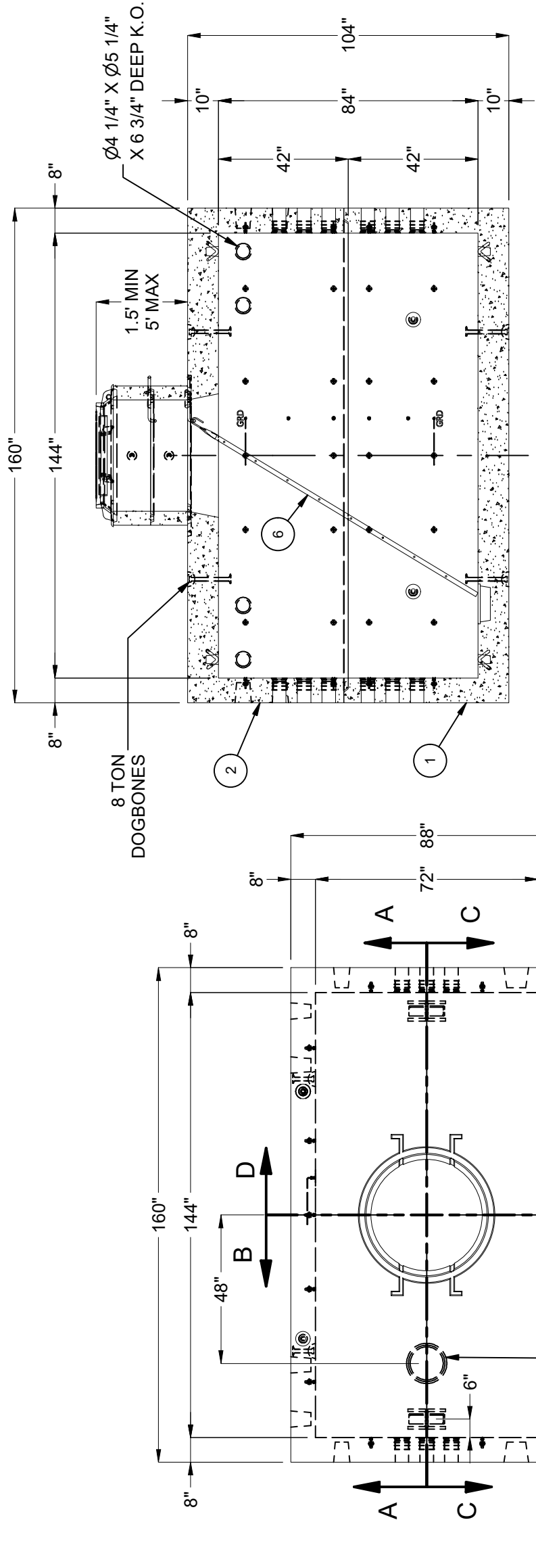
| REVISION HISTORY |                          |           |          |
|------------------|--------------------------|-----------|----------|
| REV              | DESCRIPTION              | DATE      | APPROVED |
| B-1              | INITIAL RELEASE INVENTOR | 4/17/2024 |          |

|               |  |
|---------------|--|
| DESCRIPTION:  | Vault Layout 72144x84 Knockout, Terminators Sump 30"C AT&T COLA Int. Paint - White Latex |
| REV:          | B-1  |
| PART NUMBER:  | 100010539  |
| DRAWN BY:     | J. Prado   |
| CREATED:      | 10/25/2021   |
| LAYOUT REVIEW |  |
| SHEET:        | 1 OF 2   |
| MODIFIED:     | 4/17/2024  |

**JENSEN PRECAST** EST. 1968  
WWW.JENSENPRECAST.COM

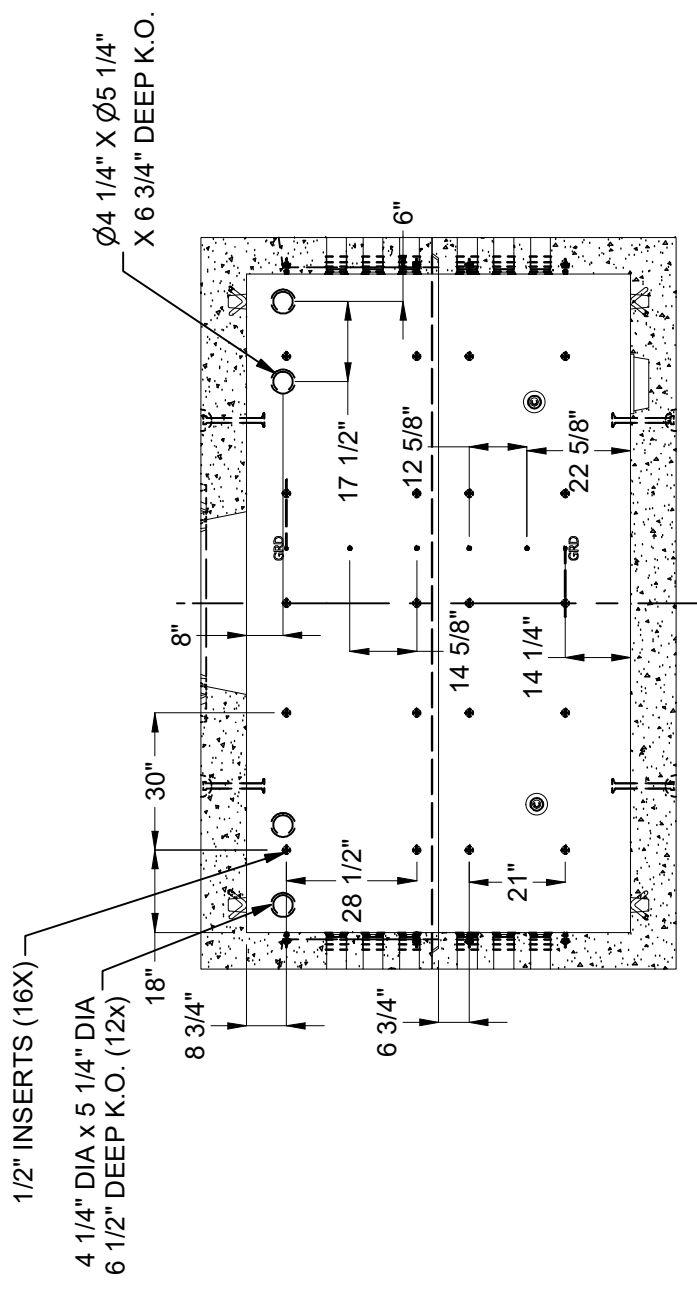
©2024 Jensen Precast. All rights reserved. All materials appearing as Jensen Precast documents and the like are proprietary work product and are protected under U.S. copyright and other laws. Unless in conjunction with business conducted with Jensen Precast, any use of Jensen Precast work product without express, written consent is prohibited, and recipient is prohibited from distributing any and all work product to non-approved third parties under penalty of civil action.

MPI16ES010001

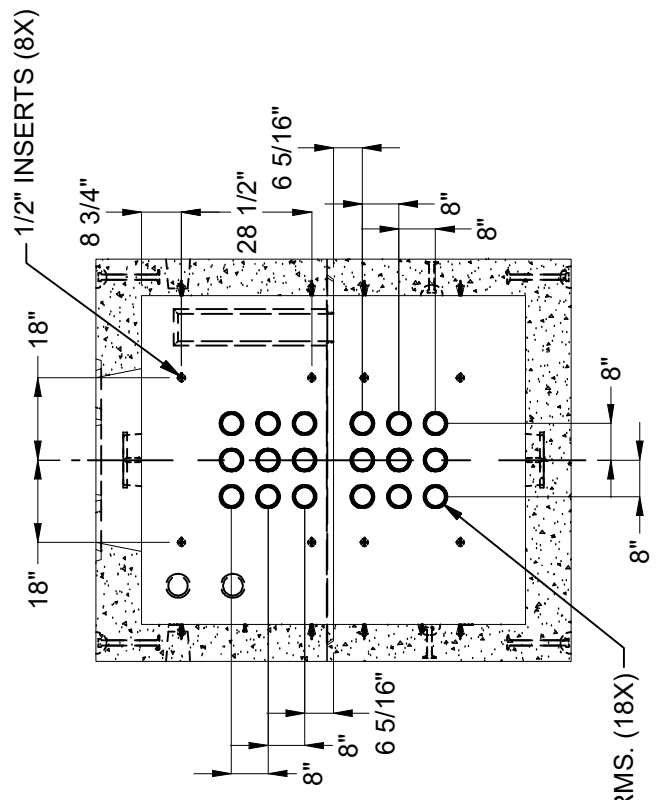


SECTION A-A

SECTION B-B



SECTION C-C



SECTION D-D

|                 |                      |
|-----------------|----------------------|
| BURY DEPTH:     | 1.5' - 5.0' to Top   |
| WATER LEVEL:    | 3.0'                 |
| DESIGN SPEC:    | AASHTO LRFD, ACI 318 |
| AGENCY:         | AT&T                 |
| APPROX. WEIGHT: | 51620.8 Lbs          |
| LOADING SPEC:   | AASHTO HL-93         |
| AGENCY SPEC:    | COLA                 |

**JENSEN PRECAST** EST. 1968  
[WWW.JENSENPRECAST.COM](http://WWW.JENSENPRECAST.COM)

©2024 Jensen Precast. All rights reserved. All materials appearing as Jensen Precast documents and the like are proprietary work product and are protected under U.S. copyright and other laws. Unless in conjunction with business conducted with Jensen Precast, any use of Jensen Precast work product without express, written consent is prohibited, and recipient is prohibited from distributing any and all work product to non-approved third parties under penalty of civil action.

|                |  |
|----------------|--|
| DESCRIPTION:   | Vault Layout 72144x84 Knockout, Terminators Sump 30°C AT&T COLA Int. Paint - White Latex |
| PART NUMBER:   | 100010539  |
| CREATED:       | 10/25/2021   |
| LAYOUT DRAWING |  |
| DRAWN BY:      | J. Prado   |
| MODIFIED:      | 4/17/2024  |