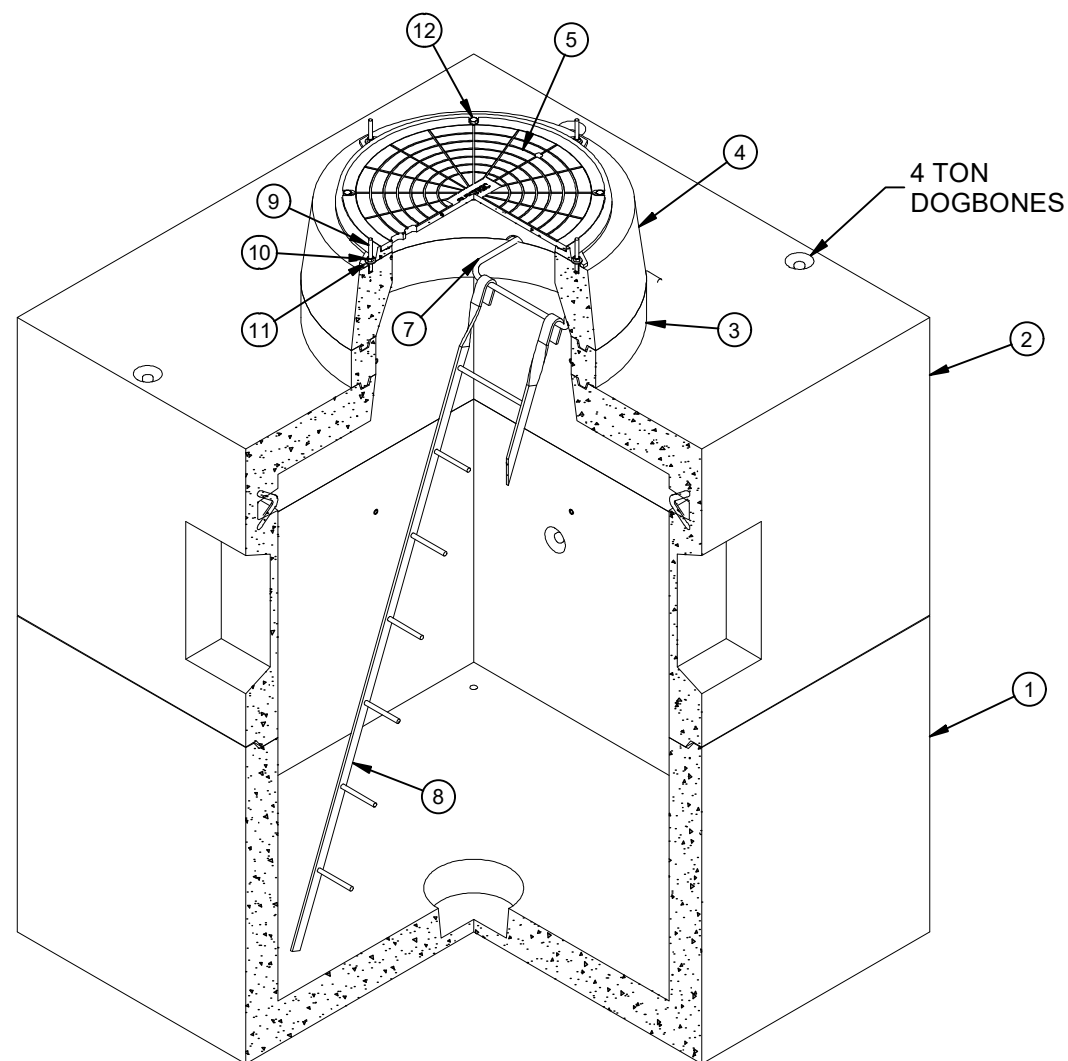


DESIGN NOTES

- DESIGNED IN ACCORDANCE WITH AASHTO H-20-44 TRAFFIC BRIDGE LOADING USING 5,500 PSI COMPRESSIVE STRENGTH CONCRETE AND 60,000 PSI YIELD STRENGTH ASTM A-706 STEEL REINFORCEMENT PER CALCS. #32578
- MINIMUM EXCAVATION SIZE: 8'-0" X 8'-0" X DEPTH REQ'D.
- COVER DESIGN FOR TRAFFIC LOADING.
- VAULT TO BE PLACED ON A MIN. 6" BASE OF CRUSHER RUN FOR EASE OF INSTALLATION AND EVEN LOAD DISTRIBUTION.
- ALL PARTS TO BE STENCILED: MFG DATE / JOB NUMBER / PRODUCT ID / WEIGHT.
- FOR COMPLETE DESIGN AND PRODUCT INFORMATION CONTACT JENSEN PRECAST.

BILL OF MATERIALS

ITEM	UNIT QTY	QTY	PART NUMBER	DESCRIPTION	MASS (lb)
1	1	1	100009503	Vault 7272x42 Rect. Bottom Section Flat Blank Sump	11157
2	1	1	100009495	Vault 7272x42 Rect. Top Section	9679
3	1	1	100012117	Grade Ring D3645x6	288
4	1	1	100012113	Grade Ring Reducer D3036x12	734
5	1	1	100006914	CI COVER 30DIA NF R-1581-5045 ASTM A48 CL35B PH B/D - ELECTRIC	224
6	1	1	100006934	CI RING 30DIA NF R-1581 ASTM A-48 CL35B 2-FLANGE DOWN	99
7	1	1	100002564	LADDER STEP RUNG 12B31 TYPE 1 MH KNURLED GALV 3/4X16	
8	1	1	100002555	LADDER HOOKED GALV 8FT I3600	
9	1	4	100008115	STUD BOLT 1/2X5 UNC LEVELING PLAIN	
10	1	4	100007007	HEX NUT 1/2-13 UNC HEAVY GALV	
11	1	4	100002657	WASHER FLAT 1/2 REGULAR TYPE A RAW	
12	1	4	100007016	BOLT HEX 5/8-11 UNC 1.625 304SS	
13	1.000 ul	1.000 ul	100005749	SEALANT JOINT BUTYL RUBBER ASTM C-990 AND M198 CS-102 1IN EQUIV X14.5FT PER BOX 118FT	



ISO VIEW

LIFTING NOTES

- FIELD INSTALLATION: PLANT DEMOLDING: MINIMUM HANDLING CONCRETE STRENGTH F'c = 5500 PSI RIGGING EQUALIZER REQUIRED TO EQUALIZE LOAD TO 4 LIFTING POINTS WITH A SLING ANGLE BETWEEN 60° AND 90°

BURY DEPTH: 0.0' - 4.0' to Top of Section

WATER LEVEL: 3.0' APPROX. WEIGHT: 22229.5 Lbs

DESIGN SPEC: ASTM C857, ACI 318 LOADING SPEC: A-16 (AASHTO HS20-44)

AGENCY: AGENCY SPEC:

REVISION HISTORY

REV	DESCRIPTION	DATE	APPROVED
C	REPLACED JOINT SEALANT & REMOVED NEOPRENE GASKET	1/4/2024	

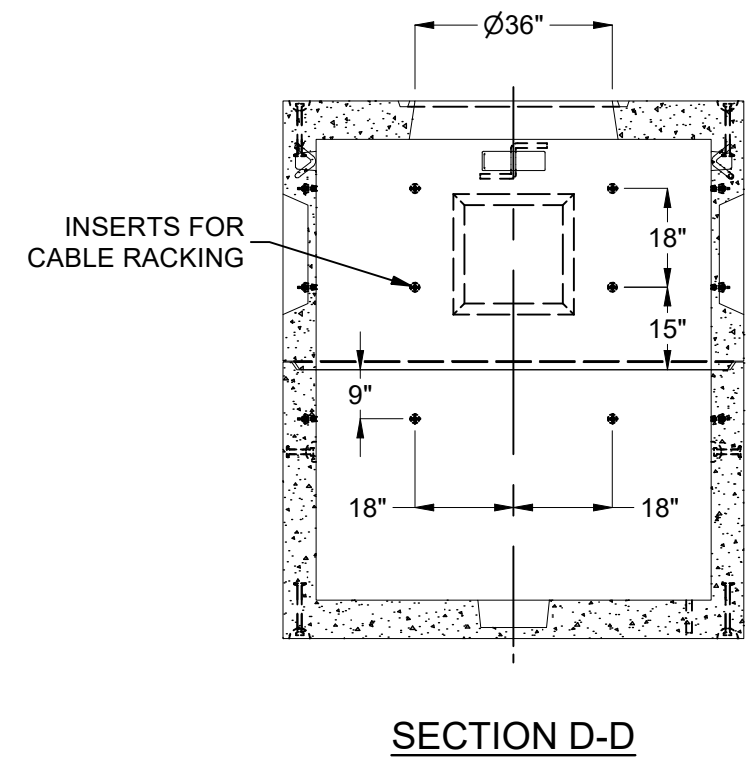
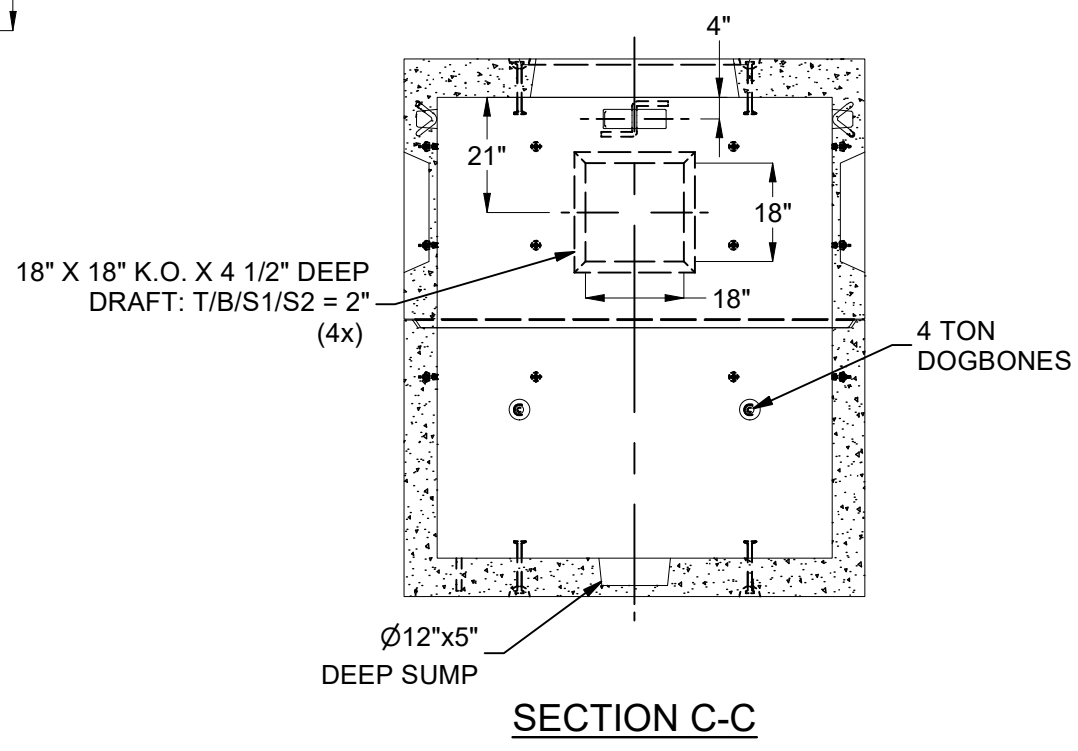
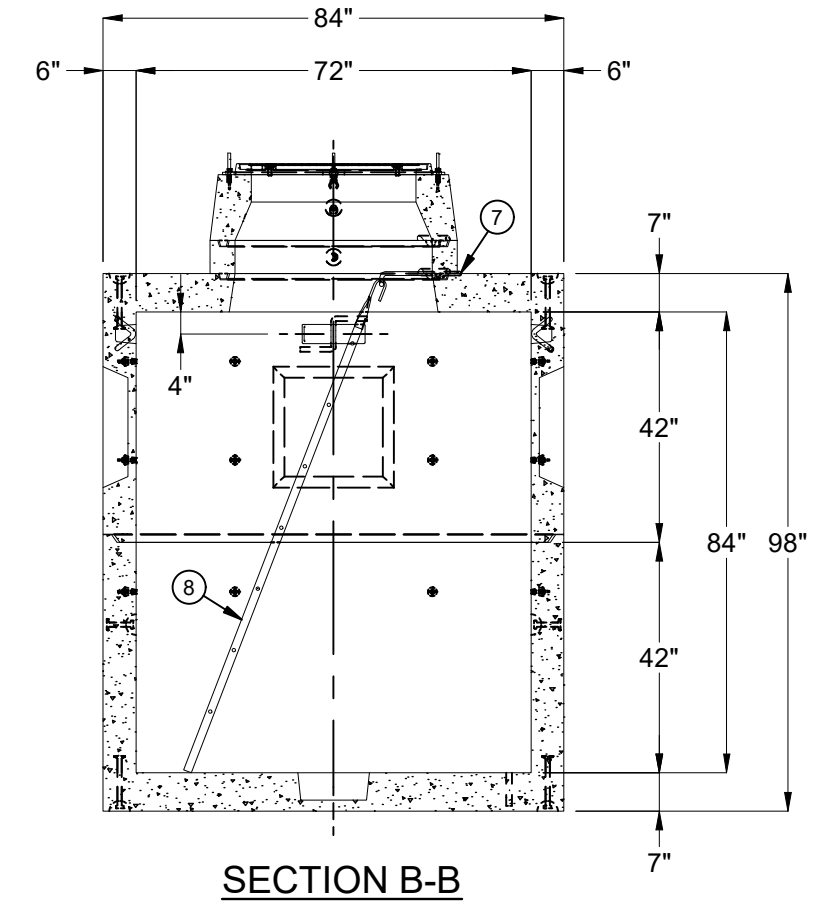
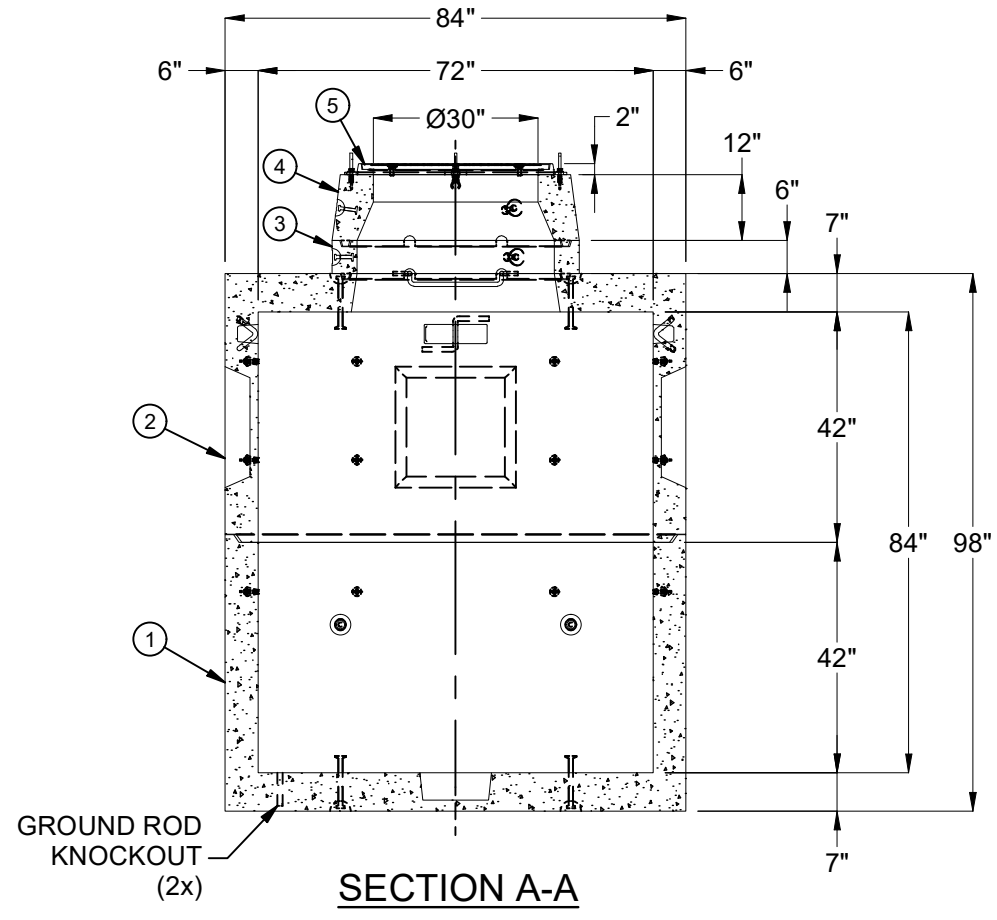
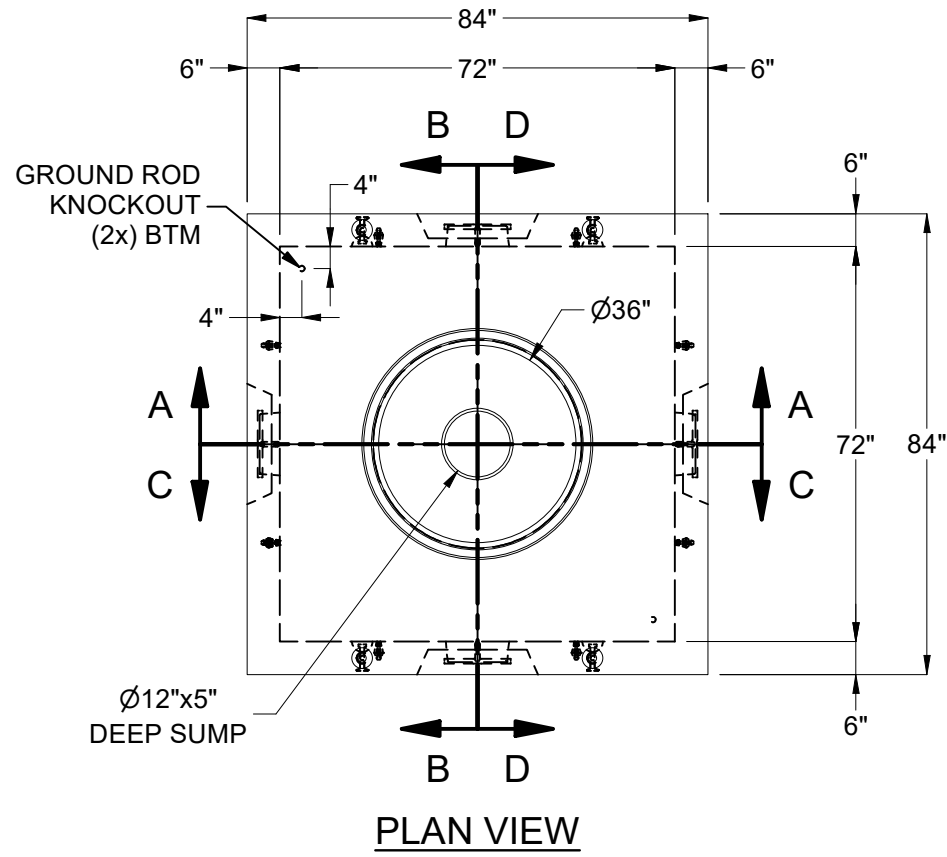
DESCRIPTION: Utility Vault 7272 Layout Assembly		REV: C-1
LAYOUT REVIEW		
PART NUMBER: 100010542	DRAWN BY: J. Prado	SHEET: 1 OF 2
CREATED: 8/15/2019	MODIFIED: 1/4/2024	



WWW.JENSENPRECAST.COM

©2024 Jensen Precast- All rights reserved. All materials appearing as Jensen Precast documents and the like are proprietary work product and are protected under U.S. copyright and other laws. Unless in conjunction with business conducted with Jensen Precast, any use of Jensen Precast work product without express, written consent is prohibited, and recipient is prohibited from distributing any and all work product to non-approved third parties under penalty of civil action.

100010542.dwg



100010542.dwg

BURY DEPTH:	0.0' - 4.0' to Top of Section	
WATER LEVEL:	3.0'	APPROX. WEIGHT: 22229.5 Lbs
DESIGN SPEC:	ASTM C857, ACI 318	LOADING SPEC: A-16 (AASHTO HS20-44)
AGENCY:		AGENCY SPEC:

JENSEN PRECAST EST. 1968

WWW.JENSENPRECAST.COM

©2024 Jensen Precast- All rights reserved. All materials appearing as Jensen Precast documents and the like are proprietary work product and are protected under U.S. copyright and other laws. Unless in conjunction with business conducted with Jensen Precast, any use of Jensen Precast work product without express, written consent is prohibited, and recipient is prohibited from distributing any and all work product to non-approved third parties under penalty of civil action.

DESCRIPTION:	Utility Vault 7272 Layout Assembly		REV: C-1
	LAYOUT DRAWING		SHEET: 2 OF 2
PART NUMBER:	100010542	DRAWN BY: J. Prado	
CREATED:	8/15/2019	MODIFIED: 1/4/2024	