

6'-0" x 8'-0" x 8'-0" DUCTED VAULT x 9'-4" DEEP

MATERIAL LIST - K68-DV112-12

ITEM PART NO.	DESCRIPTION	CAGE NO. / LOCATE	WEIGHT / MOUNT
1	UV68-B56-12	CG68-B56-12(174)	15,888 lbs
2	UV68-T56-12	CG-68-T56-12(177)	14,600 lbs
3	KNOCK OUT	BOTTOM SECTION	(1) CORE
4	KNOCK OUT	TOP SECTION	(2) CORE
7	KNOCK OUT	TOP SECTION	(4) CORE
8	SPI-45LA	BOTTOM SECTION	(3) CORE
8A	55-35-03SS	TOP SECTION	(4) CORE
9	55-10-424	TOP SECTION	(11) CORE
			(3) CORE
10	KNOCK OUT	BOTTOM SECTION	(2) CORE
11	55-20-404	BOTTOM SECTION	(4) CORE & (4) SHELL
12	55-20-409	TOP SECTION	(4) SURFACE
13	55-30-20	BOTTOM SECTION	(12) CORE

NOTES:

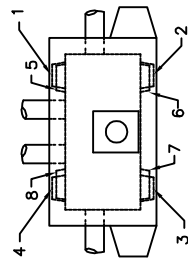
- VAULT DESIGNED IN ACCORDANCE WITH AASHTO H-20-44 TRAFFIC BRIDGE LOADING USING 5,500 PSI [37.92MPa] COMPRESSIVE STRENGTH CONCRETE 60,000 PSI [413.2MPa] YIELD STRENGTH ASTM A-706 STEEL REINFORCEMENT PER CALCS. #31566.
- VAULT TO BE PLACED ON A 6" BASE OF CRUSHER RUN FOR EASE OF INSTALLATION AND EVEN LOAD DISTRIBUTION.
- LIMITS OF COVER OVER ROOF SECTION IS 1'-6" TO 4'-0".
- CONCRETE MIX USED IN POURING THIS PRODUCT SHALL USE FLY ASH AND DCA AS AN ADMIXTURE.
- EACH CONCRETE SECTION SHALL BE MARKED ON THE INSIDE & OUTSIDE WITH "JENSEN PRECAST", THE DESIGNATION "DWP/FA-CN", AND THE DATE OF POUR.
- EACH CONCRETE SECTION SHALL HAVE CAST-IN ON THE INSIDE "JENSEN", THE YEAR, AND THE DESIGNATION "FA-CN".
- NO SHARP OR ROUGH EDGES ON THE TERMINATORS ENTERING THE VAULT.

THE FOLLOWING MATERIAL TO BE SHIPPED WITH VAULT:

- (a) 7/8" x 1 3/4" CONSEAL GASKET (45 FT. REQUIRED).
- (b) LADDER HANGER ASSEMBLY (1 REQUIRED).
- (c) 1-3582 LADDER 12' (1 REQUIRED).

ORDERING INFORMATION

K68-DV112-12, FOR ASSEMBLY AS SHOWN, APPROVED FOR LADMW SPEC. G-284 G-3, LATEST REVISION. TOTAL WEIGHT OF ASSEMBLY SHOWN IS 29,053 LBS.



VENT & DUCT KNOCKOUT ORDERING DIAGRAM WHEN ORDERING SPECIFY DESIRED DUCT AND VENT LOCATIONS PER DIAGRAM NOTATIONS. (OMIT K.O.'S SHOWN WHEN NOT ORDERED).

