

6'-0" x 8'-0" x 8'-0" DUCTED VAULT x 7'-0" DEEP

MATERIAL LIST - K68-DV84-12

ITEM PART NO.	DESCRIPTION	CAGE NO. / LOCATE	WEIGHT / MOUNT
1	UV68-B28-12 28" BOTTOM SECTION	CG-68-B28-12 (173)	11,300 lbs
2	UV68-T56-12 56" TOP SECTION	CG-68-T56-12 (177)	14,600 lbs
3	KNOCK OUT 8"x9" DIA SUMP x 6" DEEP	BOTTOM SECTION	(1) CORE
4	KNOCK OUT 24"x 36" K.O. x 12" DEEP w/5" DIA. TERMS	TOP SECTION	(2) CORE
6	KNOCK OUT DRAFT T=2", S1=S2=2", B=5"	TOP SECTION	(4) CORE
7	SPI-45LA 14"x 16" K.O. x 5" DEEP	BOTTOM SECTION	(3) CORE
7A	55-35-03SS 7/8" DIA x 4-1/2" GALV. PULL IRON WITH LEGS	TOP SECTION	(4) CORE
8	55-10-424 1/2" PLASTIC INSERT	TOP SECTION	(11) CORE
9	KNOCK OUT 12" DIA K.O. x 6" DEEP	BOTTOM SECTION	(3) CORE
10	55-20-404 4 TON x 4-3/4" GALV. RISS FOR HANDLING	BOTTOM SECTION	(2) CORE
11	55-20-409 4 TON x 9-1/2" GALV. RISS FOR HANDLING	TOP SECTION	(4) CORE & (4) SHELL
12	55-30-20 2" DIA. TERMS FOR GROUND ROD	BOTTOM SECTION	(12) CORE

NOTES:

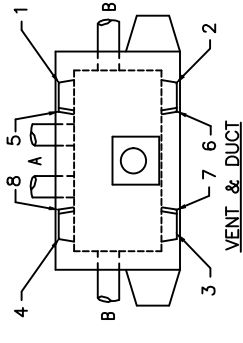
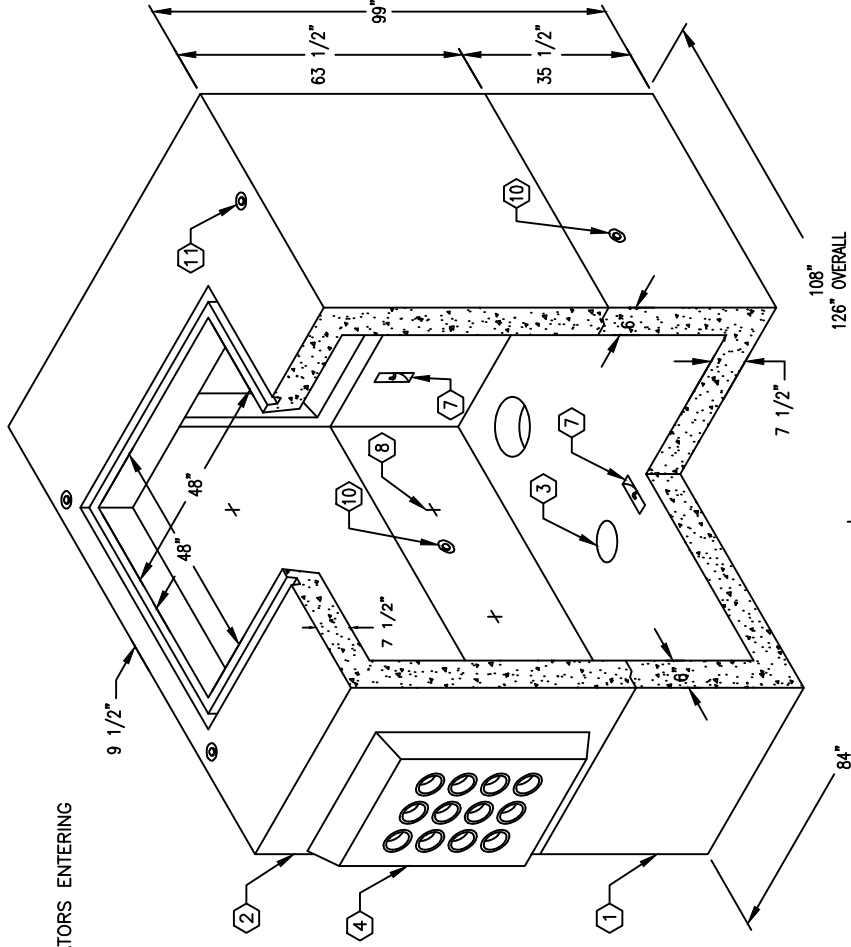
- VAULT DESIGNED IN ACCORDANCE WITH AASHTO H-20-44 TRAFFIC BRIDGE LOADING USING 5,500 PSI [37.92MPa] COMPRESSIVE STRENGTH CONCRETE AND 60,000 PSI [413.2MPa] YIELD STRENGTH ASTM A-706 STEEL REINFORCEMENT PER CALCS. #31566.
- VAULT TO BE PLACED ON A 6" BASE OF CRUSHER RUN FOR EASE OF INSTALLATION AND EVEN LOAD DISTRIBUTION.
- LIMITS OF COVER OVER ROOF SECTION IS 1'-6" TO 4'-0".
- CONCRETE MIX USED IN POURING THIS PRODUCT SHALL USE FLY ASH AND DCI AS AN ADMIXTURE.
- EACH CONCRETE SECTION SHALL BE MARKED ON THE INSIDE & OUTSIDE WITH "JENSEN PRECAST" THE DESIGNATION "DWP/FA-CN", AND THE DATE OF POUR.
- EACH CONCRETE SECTION SHALL HAVE CAST-IN ON THE INSIDE "JENSEN" THE YEAR, AND THE DESIGNATION "FA-CN".
- NO SHARP OR ROUGH EDGES ON THE TERMINATORS ENTERING THE VAULT.

THE FOLLOWING MATERIAL TO BE SHIPPED WITH VAULT:

- (a) 7/8" x 1 3/4" CONSEAL GASKET (45 FT. REQUIRED).
- (b) LADDER HANGER ASSEMBLY (1 REQUIRED).
- (c) 1-3382 LADDER 10" (1 REQUIRED).

ORDERING INFORMATION

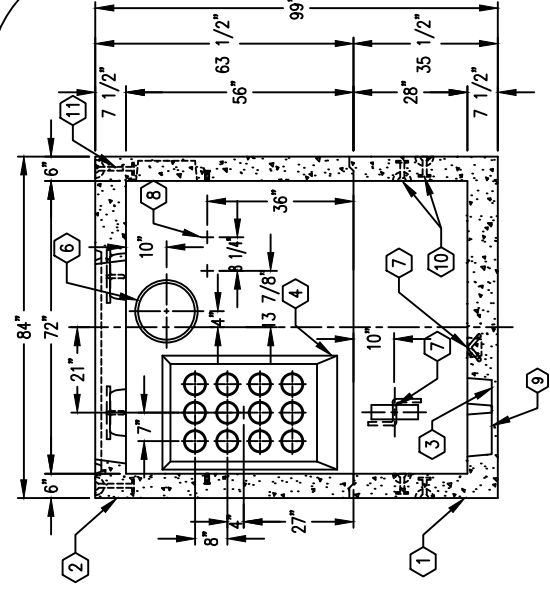
K68-DV84-12. FOR ASSEMBLY AS SHOWN.
APPROVED FOR LADWP SPEC. G-284 G-1, LATEST REVISION
TOTAL WEIGHT OF ASSEMBLY SHOWN IS 25,900 lbs.



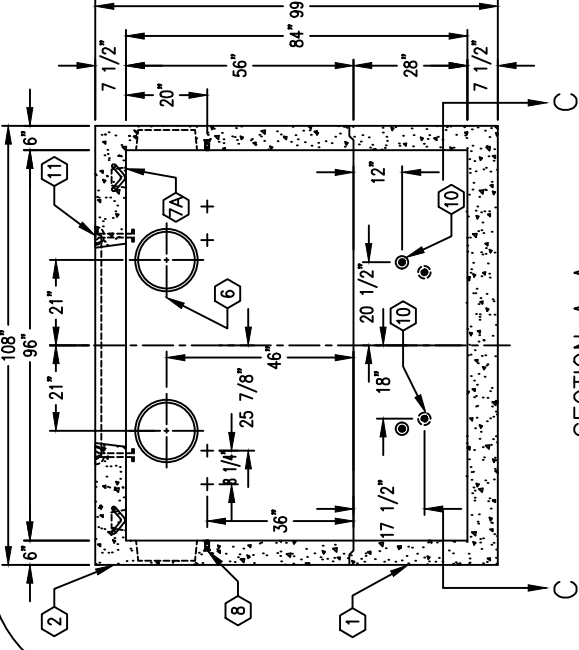
KNOCKOUT ORDERING DIAGRAM
WHEN ORDERING SPECIFY DESIRED
DUCT AND VENT LOCATIONS PER
DIAGRAM NOTATIONS.

MINIMUM EXCAVATION SIZE:
8'-0" x 11'-6" x DEPTH REQUIRED

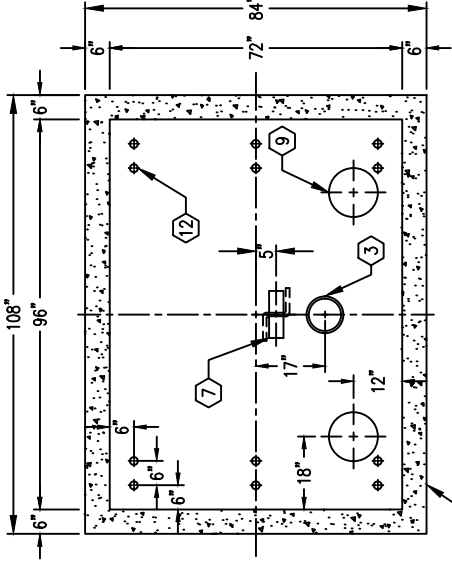
#	DATE	DESCRIPTION	BY
L	2-4-00	REMOVED OPTIONAL KNOCKOUTS-MOVED VENTS	SMG
M	05-17-11	ADDED S.S. PULL IRONS IN CEILING	DRG



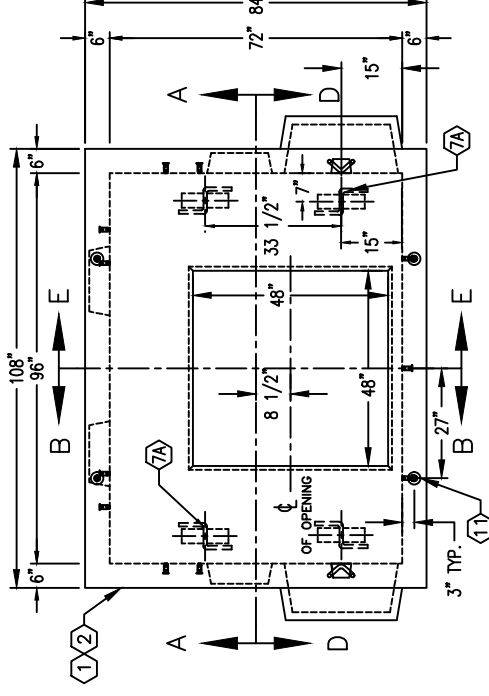
SECTION B-B



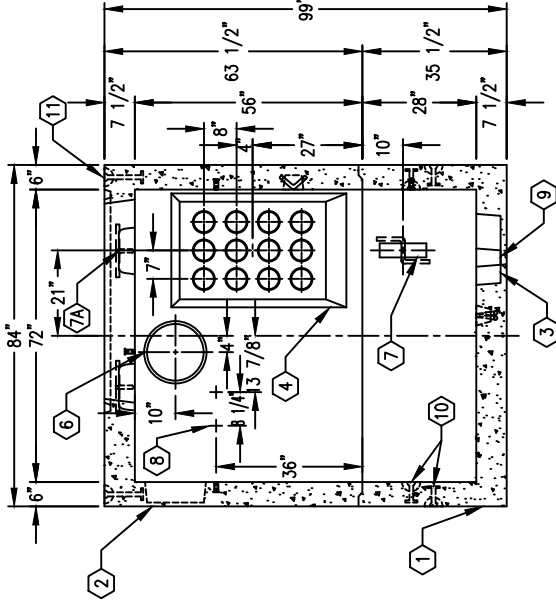
SECTION A-A



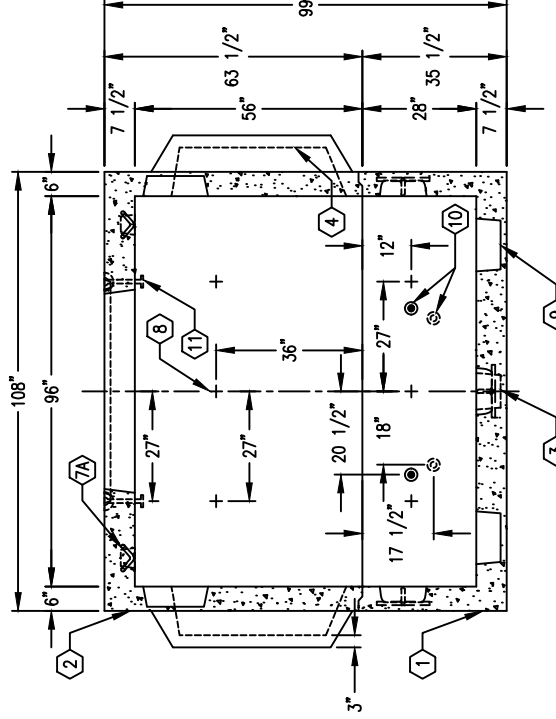
SECTION C-C



PLAN VIEW



SECTION E-E



SECTION D-D