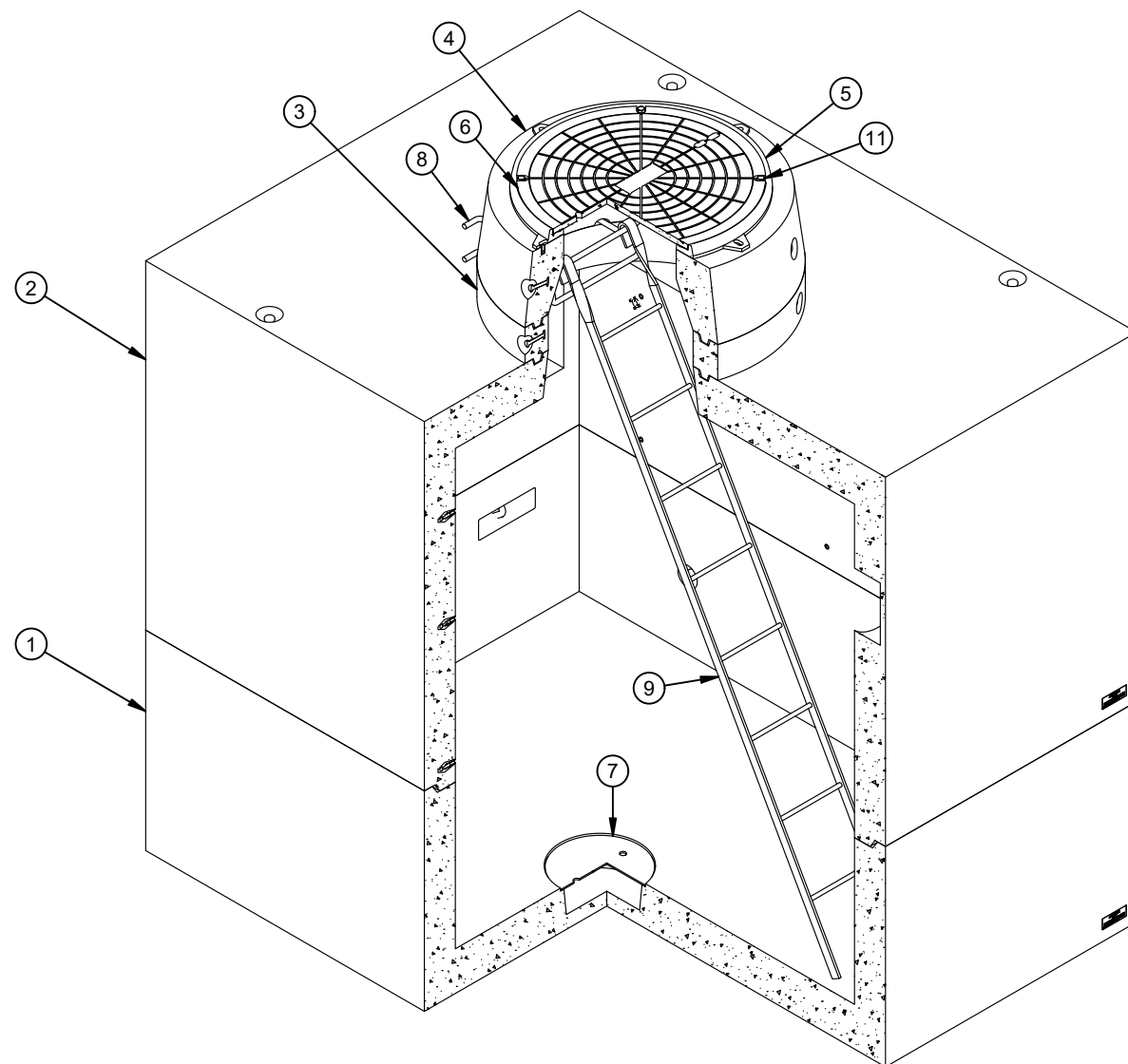


DESIGN NOTES

- DESIGNED IN ACCORDANCE WITH ASTM C857 LOADING USING 5,500 PSI COMPRESSIVE STRENGTH CONCRETE AND 60,000 PSI YIELD STRENGTH ASTM A-706 STEEL REINFORCEMENT PER CALCS. #32764
- LIMIT OF COVER OVER ROOF SECTION IS 0'-0" TO 4'-0".
- MINIMUM EXCAVATION SIZE: 8'-0" X 10'-0" X DEPTH REQ'D.
- FOR COMPLETE DESIGN AND PRODUCT INFORMATION CONTACT JENSEN PRECAST.
- COVER DESIGN FOR TRAFFIC LOADING.
- VAULT TO BE PLACED ON A MIN. 6" BASE OF CRUSHER RUN FOR EASE OF INSTALLATION AND EVEN LOAD DISTRIBUTION.

BILL OF MATERIALS

ITEM	UNIT QTY	QTY	PART NUMBER	DESCRIPTION	MASS (lb)
1	1	1	100009425	Vault 7296x28 Rect. Bottom Section Sump	11190
2	1	1	100009413	Vault 7296x56 Rect. Top Section	14574
3	1	1	100012117	Grade Ring D3645x6	288
4	1	1	100012113	GRADE RING REDUCER D3036X12	734
5	1	1	100006934	CI RING 30DIA NF R-1581 ASTM A-48 CL35B 2-FLANGE DOWN	99
6	1	1	100005903	CI COVER 30DIA NF R-1581 ASTM A-48 CL35B B/D BLANK	224
7	1	1	100006783	SUMP COVER FOR 13"SUMP(15"OD)GALV DIA PLATE	12
8	1	2	100002564	LADDER STEP RUNG 12B31 TYPE 1 MH KNURLED GALV 3/4X16	7
9	1	1	100005647	LADDER HOOKED GALV 9FT PB/GT I3600	44
10	1	1	100005749	SEALANT JOINT BUTYL RUBBER CS-102 ASTM C990 1X14.5-8 PER BOX	
11	1	4	100007016	BOLT HEX 5/8-11 UNC 1.625 304SS	



ISOMETRIC VIEW

LIFTING NOTES

- THIS CONCRETE PRODUCT IS DESIGNED TO BE LIFTED WITH 4 (FOUR) EQUALLY LOADED RIGGINGS LEGS MIN. 60° SLING ANGLE, MEASURED FROM HORIZONTAL.

BURY DEPTH: 0.0' - 4.0' to Top of Section

WATER LEVEL: 3.0' WEIGHT: 27181.13 Lbs

DESIGN SPEC: ASTM C857 LOADING SPEC: A-16 (AASHTO HS20-44)

AGENCY: AGENCY SPEC:

REVISION HISTORY

REV	DESCRIPTION	DATE	APPROVED
A	INITIAL RELEASE	2/28/20	

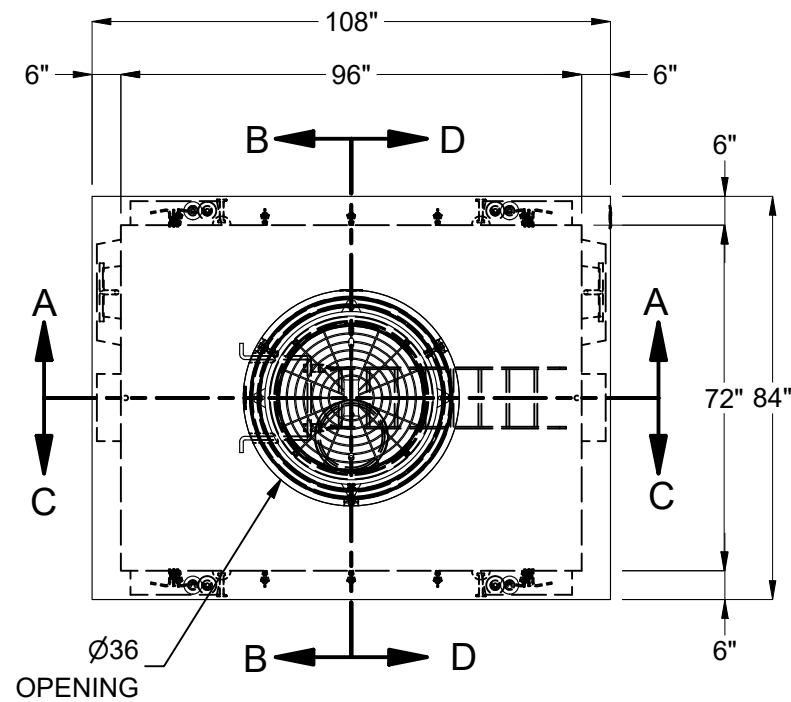
DESCRIPTION: Utility Vault 7296 Layout Assembly		REV: A
LAYOUT REVIEW		
PART NUMBER: 100010549	DRAWN BY: D.Mejia	SHEET: 1 OF 2
CREATED: 10/12/2018	MODIFIED: 2/28/2020	



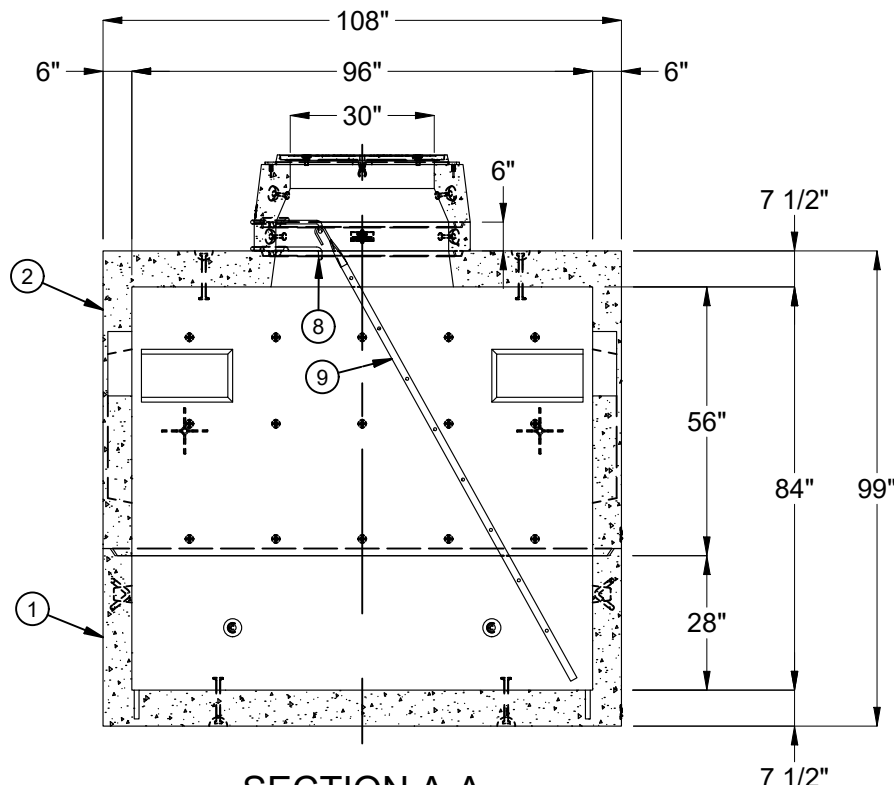
WWW.JENSENPRECAST.COM

©2018 Jensen Precast- All rights reserved. All materials appearing as Jensen Precast documents and the like are proprietary work product and are protected under U.S. copyright and other laws. Unless in conjunction with business conducted with Jensen Precast, any use of Jensen Precast work product without express, written consent is prohibited, and recipient is prohibited from distributing any and all work product to non-approved third parties under penalty of civil action.

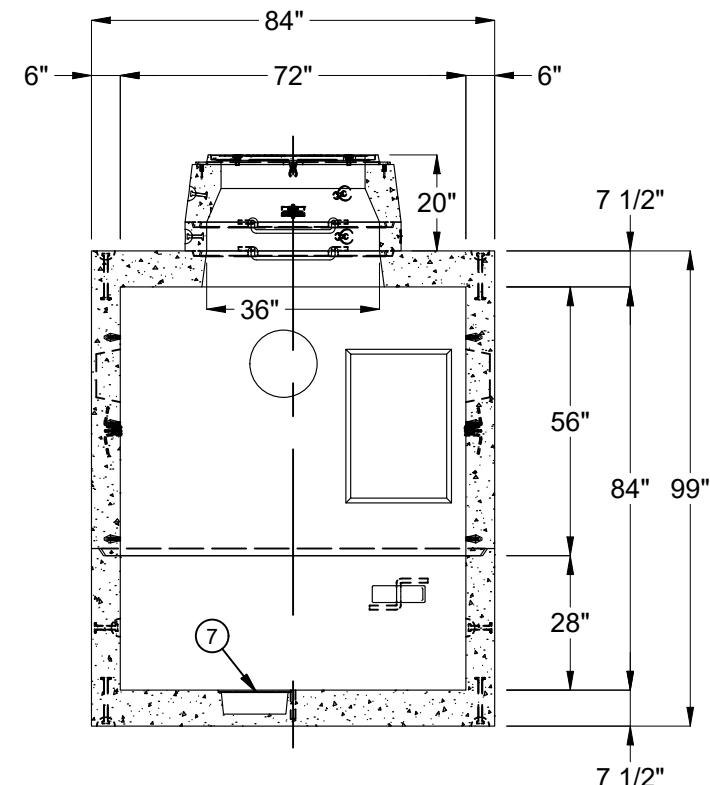
100010549.rdw



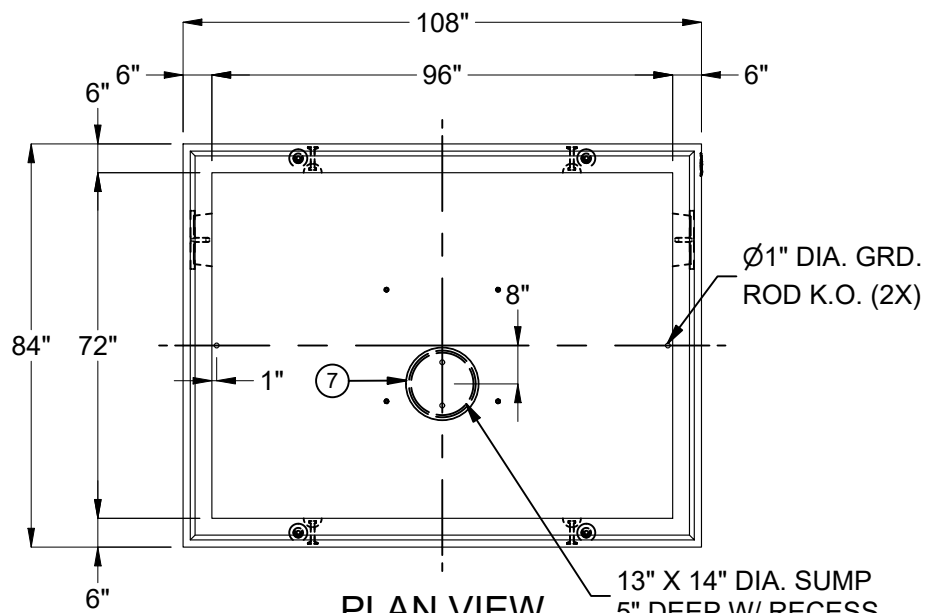
PLAN VIEW



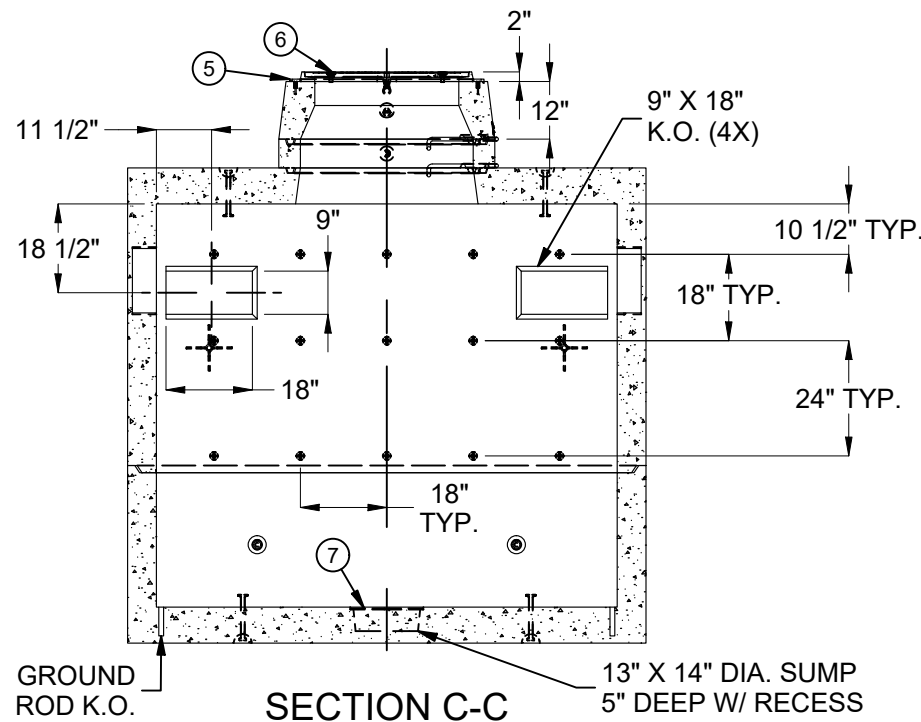
SECTION A-A



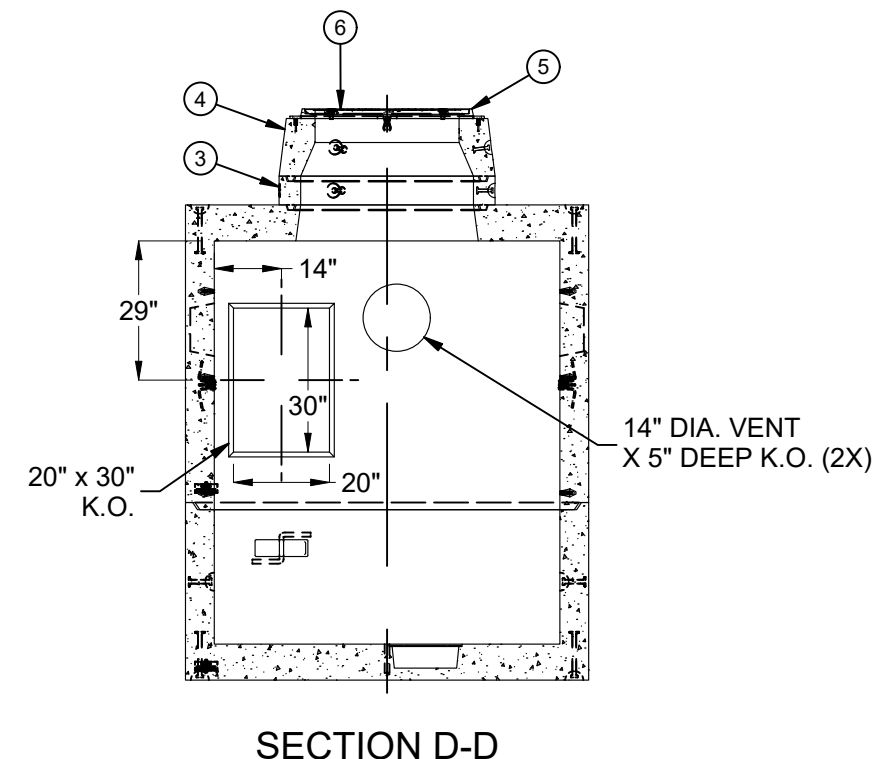
SECTION B-B



PLAN VIEW
(BOTTOM SECTION)



SECTION C-C



SECTION D-D

100010549.rdw

BURY DEPTH:	0.0' - 4.0' to Top of Section		
WATER LEVEL:	3.0'	WEIGHT:	27181.13 Lbs
DESIGN SPEC:	ASTM C857	LOADING SPEC:	A-16 (AASHTO HS20-44)
AGENCY:		AGENCY SPEC:	

JENSEN PRECAST EST. 1968
WWW.JENSENPRECAST.COM

©2018 Jensen Precast- All rights reserved.
 All materials appearing as Jensen Precast documents and the like are proprietary work product and are protected under U.S. copyright and other laws.
 Unless in conjunction with business conducted with Jensen Precast, any use of Jensen Precast work product without express, written consent is prohibited, and recipient is prohibited from distributing any and all work product to non-approved third parties under penalty of civil action.

DESCRIPTION:	Utility Vault 7296 Layout Assembly		REV:	A
	LAYOUT DRAWING		SHEET:	2 OF 2
PART NUMBER:	100010549	DRAWN BY:	D.Mejia	
CREATED:	10/12/2018	MODIFIED:	2/28/2020	