

6'-0" x 9'-0" TUNNEL INTERCEPT MANHOLE x 19'-0" LONG
AVAILABLE IN VARIOUS LENGTHS 9', 14', 19', 24', 29' (19'-0" SHOWN)

MATERIAL LIST - K69-TV19-14I

ITEM PART NO.	DESCRIPTION	CAGE NO./ LOCATE	WEIGHT/ MOUNT
1	TV69-E24I-14	CG-69-E24I-14	7,800 lbs
2	TV69-C60I-14	CG-69-C60I-14	12,900 lbs
3	TV69-R60I-14	CG-69-R60I-140	13,700 lbs
4	TV69-R60I-140	CG-69-R60I-140	12,900 lbs
5	55-21-016 55-21-057	1 5/8" x 1 5/8" UNISTRUT™ x 16" CAST-IN 1 5/8" x 1 5/8" UNISTRUT™ x 57" CAST-IN	(10) CORE (10) CORE
6	55-10-525	5/8" FERRULE LOOP INSERT GALV. FOR 5/8" DIA x 18" THREAD REBAR DOWEL (SD518)	(28) CORE (30) CORE
7	55-10-215	1/4" THREADED BRONZE GROUND INSERT WELD TO REBAR 'GRD' TO BE STENCILED IN RED LETTERS	(2) CORE (2) CORE
8	55-10-210	1/4" P-15-T WITH 1/4"-20NC x 1" S.S. HEAD BOLT FOR BONDING RIBBON	(2) CORE (2) CORE
9	BRK-TV	BOLT UP CASTING	(4) CORE (4) CORE
10	55-20-409	4 TON x 9 1/2" GALV. RISS FOR HANDLING	(2) SHELL (4) SURFACE (6) SHELL
11		42" WD x 12" HT SLOT-EA. END FOR POURING CONC. IN FIELD	

NOTES:

- MANHOLE DESIGN IN ACCORDANCE WITH AASHTO H-20-44 TRAFFIC BRIDGE LOADING USING 5,500 PSI COMPRESSIVE STRENGTH CONCRETE AND 60,000 PSI YIELD STRENGTH ASTM A-706 STEEL REINFORCEMENT PER CALCS. #33845.
- MANHOLE TO BE PLACED ON A MIN. 6" BASE OF CRUSHER RUN FOR EASE OF INSTALLATION AND EVEN LOAD DISTRIBUTION.
- LIMITS OF COVER OVER ROOF SECTION IS 10" TO 5'-0".
- ALL WALLS AND CEILING SHALL BE PAINTED WHITE.
- EACH CONCRETE SECTION SHALL BE MARKED ON THE INSIDE & OUTSIDE WITH "JENSEN PRECAST-FONTANA", "JENSEN PART #", "AT&T OIN#" AND THE DATE OF POUR.
- EACH CONCRETE SECTION SHALL HAVE CAST-IN ON THE INSIDE "JENSEN", AND THE YEAR.

ORDERING INFORMATION
K69-TV19-14I FOR ASSEMBLY AS SHOWN.
PER AT&T SPEC.
TOTAL WEIGHT OF ASSEMBLY IS 55,100 Lbs.

THE FOLLOWING MATERIALS ARE TO BE SHIPPED WITH THE MANHOLE.

- (a) A-3383 LADDER STEPS
- (b) A-3600 LADDER 10'
- (c) 4" DIA. CONTERM
- (d) 960 INTERCEPT TIE-BACK REBAR
- (e) #4 REBAR x 234" LONG
- (f) SEE CABLE RACKING DWG'S 69-E24, 30-CR14 & 69-R60-CR14
- (g) SEE GRADE RING & COVER DWG GRC-OPT-14
- (h) KPKINT-69TV19 INTERCEPT PACKAGE, SEE DRAWING KPKINT-TV69
- (i) 7/8" GALV. PULL IRON (+ REQ'D.) CONTRACTOR TO CAST-IN PLACE @ END WALLS, 12" FROM TOP & BOTTOM.

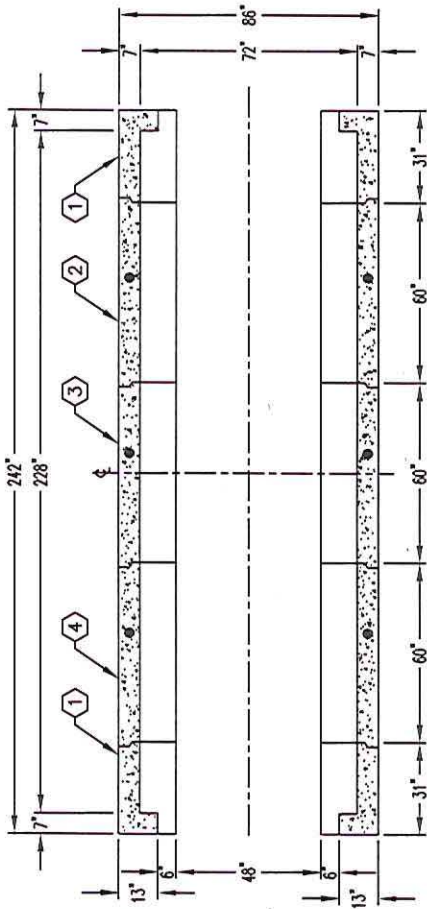
APPROVED

SEP 18 2015

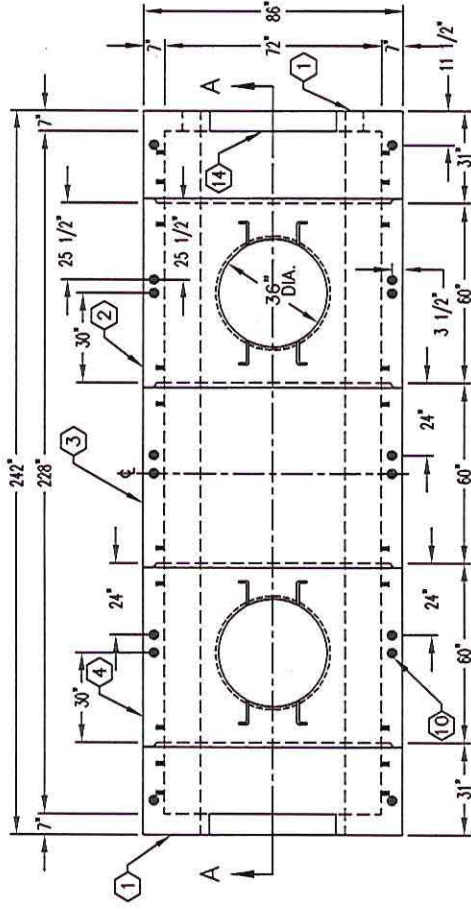
MPW

JENSEN PRECAST
AUTOCAD 2005

K69-TV19-14I
PER AT&T SPECS.

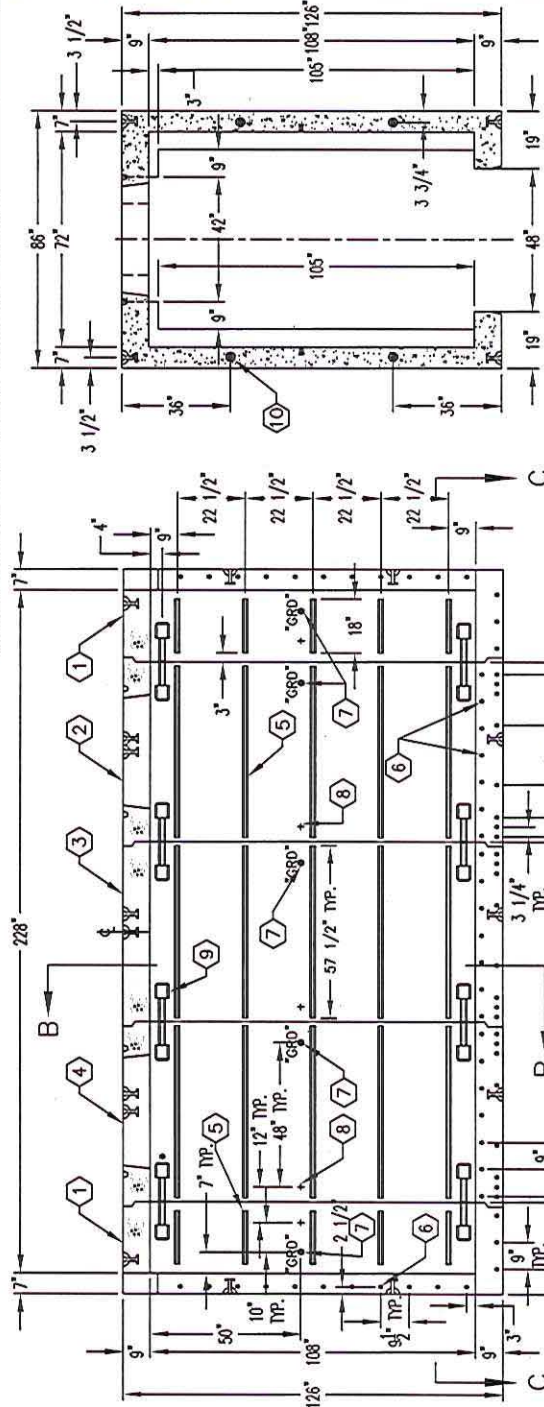


SECTION C-C



PLAN VIEW

DESCRIPTION	AT&T OIN#
6:9-2-6 MODULAR MANHOLE INTERCEPT END CAP W/RACKING	100061969
6:9-2-6 MODULAR MANHOLE INTERCEPT END CAP W/RACKING	100061970
6:9-5 MODULAR MANHOLE INTERCEPT CENTER W/ACCESS & RACKING	100061971
6:9-5 MODULAR MANHOLE INTERCEPT CENTER W/O ACCESS & W/RACKING	100061972



SECTION A-A

SECTION B-B

DATE	DESCRIPTION	REVISION	CHECKED BY
01-12-98			
03-17-15	ADDED CALL OUTS FOR GROUND INSERTS		CHK
08-05-15	INT. PKG. REBAR DWG & STRUT NOTE		DF

JENSEN PRECAST

JENSEN PRECAST
AUTOCAD 2005

K69-TV19-14I
PER AT&T SPECS.

K69-TV19-14I
PER AT&T SPECS.