

6'-0" x 9'-0" FLAT WALL TUNNEL MANHOLE x 19'-0" LONG  
 AVAILABLE IN VARIOUS LENGTHS 9', 14', 15', 19', 24', 29', 34', 39' (19'-0" SHOWN)

MATERIAL LIST

ITEM #	PART NO.	DESCRIPTION	WEIGHT/MOUNT
1	TV69-E24-14	(2) 24" END SECTION	12,700 lbs
2	TV69-C60-14	60" CENTER SECTION WITH OPENING	15,150 lbs
3	TV69-R60-14	60" EXTENSION SECTION	16,000 lbs
4	TV69-R60-140	60" EXTENSION SECTION WITH OPENING	15,150 lbs
5		KNOCK OUT 13" x 12" DIA. SUMP x 4 1/2" DEEP	(1) CORE (1) CORE
6	55-35-03	7/8" DIA x 3 3/8" GALV. PULL IRON	(2) CORE (2) CORE
7	50-30-43	4" DIA. CONDUIT CONTERM SLEEVE 4.35"-4.5" I.D. STEPPED	(40) SURFACE
8	55-21-015 55-21-057	1 5/8" x 1 5/8" UNISTRUT x 15" 1 5/8" x 1 5/8" UNISTRUT x 57"	(20) CORE (10) CORE (10) CORE
9	BRK-TV	BOLT UP CASTINGS	(4) CORE
10	55-10-215	1/4" THREADED BRONZE GROUND INSERT WELD TO REBAR "GRD" TO BE STENCILED IN RED LETTERS	(8) CORE (6) CORE
11	55-10-210	1/4" P-15-T WITH 1/4"-20NC x 1" S.S. HEAD BOLT FOR BONDING RIBBON	(2) CORE (2) CORE
12	55-20-409	4 TON x 9 1/2" GALV. RISS FOR HANDLING	(2) CORE (2) CORE (2) SHELL (4) SURFACE

NOTES:

- CONCRETE DESIGNED PER ASTM C857, LOAD DESIGNATION A16 (MASHITO H-20-44) TRAFFIC LOADING, USING 5,500 PSI CONCRETE ASTM A706 GR.60 STEEL REINFORCEMENT PER CALCS. #33845.
- VAULT TO BE PLACED ON MIN. 6" BASE OF CRUSHER RUN FOR EASE OF INSTALLATION AND EVEN LOAD DISTRIBUTION.
- LIMITS OF COVER OVER ROOF SECTION IS 10" TO 5'-0".
- ALL WALLS AND CEILING SHALL BE PAINTED WHITE.
- EACH CONCRETE SECTION SHALL BE MARKED ON THE INSIDE & OUTSIDE WITH "JENSEN PRECAST-FONTANA", "JENSEN PART #", "AT&T OIN#" AND THE DATE OF POUR.
- EACH CONCRETE SECTION SHALL HAVE CAST-IN ON THE INSIDE "JENSEN", AND THE YEAR.

THE FOLLOWING MATERIALS ARE TO BE SHIPPED WITH THE MANHOLE.

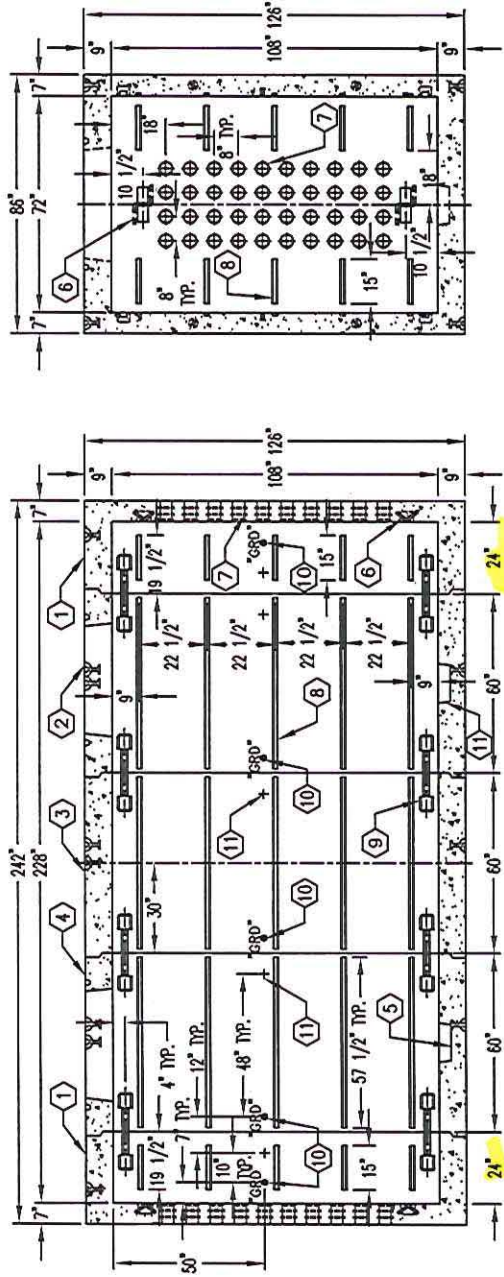
- (a) A-3383 LADDER STEPS
- (b) A-3600 LADDER 10'
- (c) SEE CABLE RACKING DWG'S 69-E24, 30-CR14 & 69-R60-CR14
- (d) SEE GRADE RING & COVER DWG GRC-OPT-14

APPROVED

NOV 24 2015

mpm

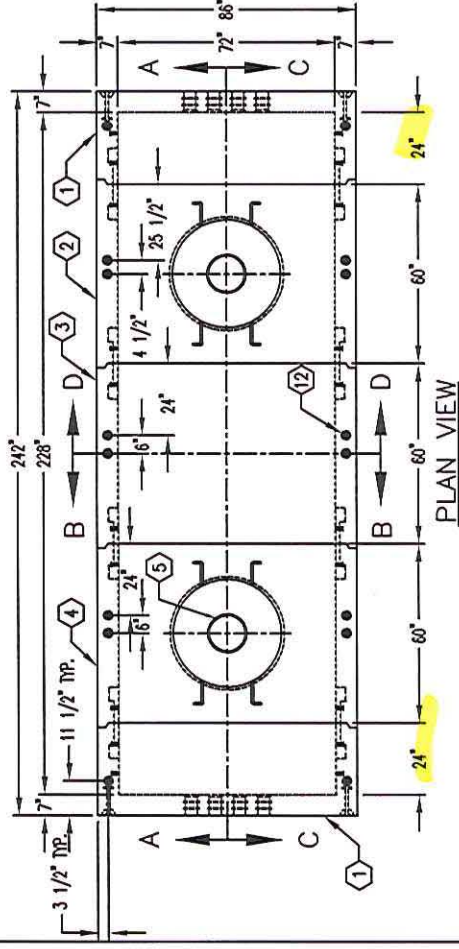
MINIMUM EXCAVATION SIZE:  
 8'-0" x 21'-0" x DEPTH REQ'D.



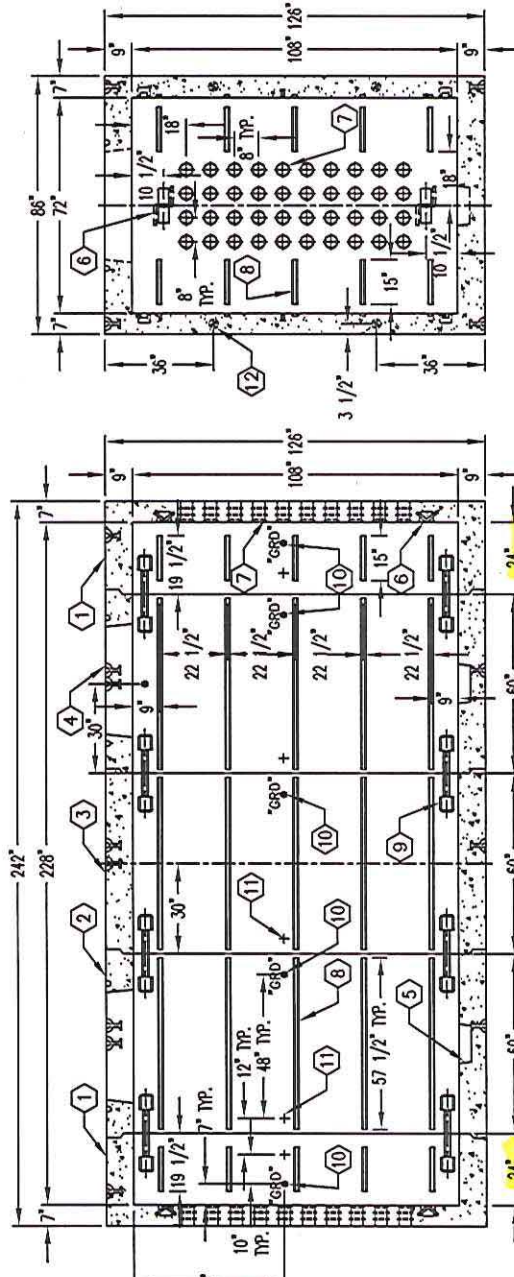
SECTION A-A

SECTION B-B

DESCRIPTION	AT&T OIN#
6x8x2-6 MODULAR MANHOLE END CAP W/RACKING	X0000000X
6x9x2-6 MODULAR MANHOLE END CAP W/RACKING	100061966
6x9x5 MODULAR MANHOLE CENTER W/ACCESS & RACKING	100061967
6x9x5 MODULAR MANHOLE CENTER W/O ACCESS & W/RACKING	100061968



PLAN VIEW



SECTION C-C

SECTION D-D

DATE	DRAWN BY	CHECKED BY
07-09-87		

#	DATE	DESCRIPTION	REVISION	BY	CHK
H.1	11-24-15	ADDED AVAILABLE IN VARIOUS LENGTHS NOTE			DF
H	09-16-15	ADDED CALL OUTS FOR GROUND INSERTS			DF